

University of Montana

ScholarWorks at University of Montana

Montana Kaimin, 1898-present

Associated Students of the University of
Montana (ASUM)

10-15-1954

The Montana Kaimin, October 15, 1954

Associated Students of Montana State University

Follow this and additional works at: <https://scholarworks.umt.edu/studentnewspaper>

Let us know how access to this document benefits you.

Recommended Citation

Associated Students of Montana State University, "The Montana Kaimin, October 15, 1954" (1954).

Montana Kaimin, 1898-present. 3026.

<https://scholarworks.umt.edu/studentnewspaper/3026>

This Newspaper is brought to you for free and open access by the Associated Students of the University of Montana (ASUM) at ScholarWorks at University of Montana. It has been accepted for inclusion in Montana Kaimin, 1898-present by an authorized administrator of ScholarWorks at University of Montana. For more information, please contact scholarworks@mso.umt.edu.

Busy Week End Slated at MSU



Montana State University, Missoula, Montana
Volume LVI Z400 Friday, October 15, 1954 No. 10

Homecoming Program Set, Includes Various Activities

By SCOTT LEEDHAM

Homecoming panorama for 1954 will slip into high gear at 1:30 p.m. when visiting alumni begin to tour the campus. The weatherman predicts the weather will be fair and much warmer than it was at the first of the week.

The pep rally will start at 7:30 p.m. in front of the Kappa Kappa Gamma house when students form the column for the snake dance, according to Johann Miller, Fairview, Traditions board chairman.

Plans are to snake dance to the Field House via Gerald, University, Maurice, and Eddy avenues. The dance will pass once around a bonfire in a parking lot near the Field House, then swing into the building for the pep program.

Miller urges all students "to come to the snake dance and rally and show the team they are behind them."

Reunion Dinners . . .

Tonight at 6:30 the Golden and Silver anniversary classes will hold reunion dinners in the Faculty center in Jumbo hall.

Also this evening the alumni have two events scheduled for 8:30. A coffee and conversation get-together will be held in part of the new Food Service center, and at the same time a pre-game

C-B Okays Report On Appropriations

In an hour, a record short meeting, Central board checked off business concerning approval of special Budget and Finance appropriations, student reserve funds, homecoming plans, leadership camp, faculty activity cards and Kaimin subscriptions for Skyline college student presidents.

Special appropriations approved were: senior class reserve, \$50; Traditions board, \$200; leadership conference, \$120; M blankets for lettermen, \$250; and director of student affairs, \$600.

The golf course well expenses of \$2,940.85 are to be included in the \$40,000 student general reserve fund available for lending, the group decided. Joan Bachman, Missoula, business manager, gave a detailed report on the reserve fund.

Other business on the agenda was a report by Traditions board president Johan Miller, Fairview, on Homecoming plans, a decision to have a leadership camp again this year. The possibility of faculty activity cards looked doubtful, according to a report by Miss Bachman. Yearly subscriptions to the Kaimin will be sent to the seven Skyline conference student presidents to promote closer relations.

Today's Weather—



TODAY'S
MAXIMUM

Near
60°

Negro Jazz Band To Play Saturday

Jazz and blues will be featured Saturday night when the Jimmy Wright band plays for the Homecoming dance in the Field House.

The band, an all negro outfit, has two vocal groups, Marvin and Johnny, and a quartet, The Flairs. Both are recording artists. Their most recent releases are "Cherry Pie" and "Tick Tock" by Marvin and Johnny, and "Porky Pie" and "Love All Night" by the Flairs.

The organization has played at many night clubs on the west coast; and are coming to MSU from the Crescendo on Sunset Strip in Los Angeles, Calif.

Ancient Rivals Again Clash In Saturday Homecoming; Series Dates Back to 1904

The Montana Grizzly-Utah State Aggie football game tomorrow afternoon on Dornblaser field will mark the 35th anniversary of the first Montana homecoming game and the 21st game of an ancient series between the Silvertips and the Aggies which dates back to 1904.

Coach John Roning's Blue and White Aggies, arriving this morning in Missoula, have a decided edge in this time-honored series. Utah State has won 14, scoring 304 points, while Montana has won six, scoring 211 points.

Six Starters Return

Last year Utah State trimmed the Grizzlies, 33-14, at Logan. Many of the players who figured in that Aggie victory will parade again tomorrow on the turf against the Silvertips. Six 1953 Blue and White starters return to Dornblaser.

Utah State has a 1-3 won-lost record. Their three losses were to non-conference rivals—Wichita, San Jose State, and Fresno State. Their lone victory, a 6-0 thriller over the New Mexico Lobos, gives

them a 1-0 conference record, good for second place in the Skyline standings.

The Aggies have gained 878 yards in total offense against their four opponents. They have completed 15 passes in 49 attempts and have had five intercepted. Last week, in losing 23-13 to Fresno State, USAC gained 260 yards, most of it on the ground as they completed only one pass in 10 attempts. The Farmers place but two men in top Skyline statistical brackets. Quarterback Kent Harris is sixth in passing and end Charlie Hatch is fifth in pass receiving.

Farmers Free-Wheeling

Utah State has geared its offense to the free-wheeling, split-T attack. Three-fourths of their running plays are of the quarter-back-option type. In a passing situation there are usually two ends and one back downfield as eligible receivers. They occasionally use an optional, run-pass play, with the halfbacks doing the pitching or running.

The Grizzlies will suit up about 35 men for the game, with Walt Laird, Jim Stone, Bob Small and Dave DonTigney sidelined with injuries. Bob Dantic, who suffered a slight ankle sprain early this week, should be ready to go Saturday. In the event Dantic's ankle doesn't permit him to play, Bill Gue, shifted from halfback to fullback this week, will probably start.

Also on the doubtful list is starting end Keith Peterson, who picked up a nasty lime burn last week in Denver. Alternate end Ken Eyerly may get the nod if Peterson has not fully recovered.

National Olympic Day

This homecoming game has been proclaimed National Olympic day by the University's director of athletics, George F. "Jiggs" Dahlberg. His declaration coincides with action of the Joint Congressional Resolution authorizing President Eisenhower to proclaim October 16th as the first National Olympic day.

The probable starting lineups:

Montana	Pos.	Utah State
Peterson or Byerly	LE	Kundent
Miles	LT	Kragthorpe
Burke or Dasinger	LG	Mellilo
Jensen	C	Librizzi
DeLuca	RG	Whitaker
Weskamp	RT	Ebert
Samuelson	RE	Hatch
Heath	QB	Karnick
Imer	LH	Frank
Campbell	RH	Smith
Dantic or Gue	FB	Lorenat

Extends Welcome



PRES. CARL MCFARLAND

Welcome to former students and friends who attend the 1954 Homecoming! Those of you who have not been here recently will note some superficial changes. But the campus is that of the same alma mater, a bit older and, we hope, more mature. New buildings and extended grounds are just the necessary shelter and facade. People, both students and faculty, are what count. There are more non-veterans (and hence state supported) students here than ever before. The faculty has not changed except for some comparatively few retirements and replacements. The entire campus community is happy to join in welcoming, and entertaining, our annual Homecoming visitors.

Carl McFarland

"Star Spangled Banner" just before game time.

At half-time, floats carrying the Homecoming queen candidates will pass once around the playing field. The winner of the queen contest will be announced and the float carrying the queen will stop in front of the east side student bleachers. She will receive her crown at that time.

The remainder of the half-time program will be presented by the MSU band and Utah State band.

Greek Teas . . .

Following the game, sororities and fraternities will hold open house for all campus visitors.

The three-event package, "Cabaret Night," will begin with a social hour at 5:30 in the Florence hotel, and a little later an informal dinner will be served at the hotel. As these events conclude the scene will shift to the Field House where Johnny Wright's band will play for the Homecoming dance.

KAIMIN ASSOCIATE EDITOR TO BE PICKED NEXT WEEK

Publications board will pick an associate editor for the Kaimin from applications turned in to Ray Moholt, Glendive, chairman. Applications must be in by Wednesday, Oct. 20 at 4 p.m.

Four associate editors are chosen each spring. The fifth, if needed, is added in the fall.

BREAKFAST DEADLINE SET

Reservations for the Sons-Daughters-Alumni Parents' breakfast must be made before 4 p.m. today at the Alumni office. Massey McCullough, Missoula, is toastmaster for the event, to be held in the Governor's room of the Florence hotel at 8 a.m. tomorrow.

warm-up will begin at the Elks club downtown.

Saturday's program begins at 8 a.m. with a Sons-Daughter-Parents breakfast in the Florence hotel.

Parade Floats . . .

Drawings for parade floats have been made and the following living groups are working together:

North hall and Sigma Chi; Corbin hall and Phi Delta Theta; Synadelphic and Theta Chi; New hall and Sigma Phi Epsilon; Alpha Phi and Sigma Nu; Delta Gamma and Alpha Tau Omega; Delta Delta Delta, Jumbo hall and Craig hall; Kappa Alpha Theta and Sigma Alpha Epsilon.

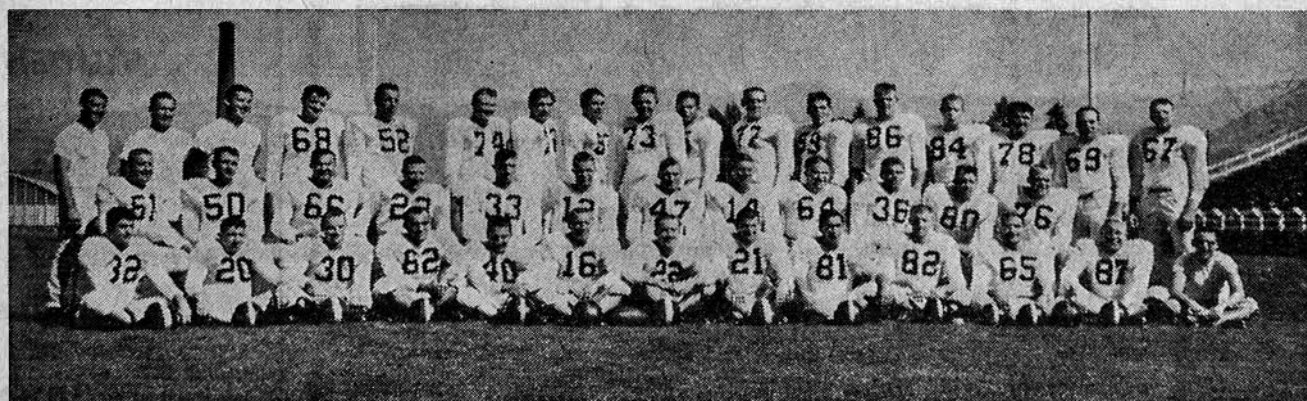
There will also be many school and department floats in the parade. Seven Missoula business men will judge each float on originality and neatness. Trophies will be presented to the living groups and department or school having the best float during the half-time festivities of the Homecoming game.

ROTC and Band . . .

The parade will start at the N.P. depot at 10 a.m. It will proceed to the Field House by way of Higgins, Gerald, University, Maurice and Eddy avenues. A color guard and ROTC unit followed by the MSU band will lead the parade.

According to a directive released by the parade committee there will be three sections and over 30 units in the parade.

Jet aircraft flown by members of the Great Falls Air National Guard will present a 20 minute pre-game show beginning at 1:10. The MSU band will combine with the Utah State band to play the



Pictured is the 1954 MSU football team which meets the Utah State Farmers in Saturday's Homecoming game on Dornblaser field. The game will mark 50 years of gridiron relations between the two schools.

Back row, left to right: Coach Chinske, Freshman Coach Byrne, Line Coach Zeger, McGihon, Small, Little, Dahlberg, Byerly, Black,

Gron, Gehring, Jensen, Samuelson, Peterson, Miles, DeLuca and Burke.

Middle row, left to right: Simon, Stone, Laird, Shupe, Bissell, Enochson, Kaiserman, Shultz, Downey, Milne, Muri and Weskamp.

Front row, left to right: Powell (dropped football), Gregory, Dantic, Dasinger, Imer, co-captain Heath, co-captain Campbell, Gue, Kocsis, Olson, DonTigney, Johnson, manager Rowan.

Keep Coming Back Alums

We bid you welcome Montana alums.

This is a heartfelt greeting of the undergraduates of MSU. You are our "folks." You assure us that education is all worth while, that you have found your lives to be good and rich because of it. You remind us that there have been many important societies of college students before us and will be an abundance of people to follow us. You tell us that the maple lined walks, the old and new brick buildings, the surviving traditions and the old friends of Montana State University remain important parts of your lives. We know these things because you come back.

So it is Homecoming time again and time for us to take stock of what we are contributing to our campus. Time for us to appreciate and wish you alumni a good time, again, at MSU.—P.O.H.

FROSH MUSICIANS NEEDED

Freshmen interested in playing brass instruments for the Grizzly Growlers in the Homecoming parade call Larry Nitz at Craig hall.



Chicken Here and to Go
\$1.00

Steaks-Dinners-Beer

THE SHACK

223 West Front Phone 9-9903

Today's Meetings

Friday:

Noon, MSU alumni luncheon, Copper room, SU.

Noon, Montana Forum, Eloise Knowles room, SU.

7 p.m., Grizzly Growlers, head of Oval.

Saturday:

1:30 p.m., all frosh with cans of rocks and beanies in middle of east bleachers.

Monday:

4 p.m., Phi Kappa Phi, Copper room, SU.

4 p.m., Radio Guild theater hour, "The Devil and Daniel Webster"; U 302.

7 p.m., Veterans, Main hall auditorium.

7:30 p.m., Independent Student association, J 304.

MSU Enrollment Moves Upward

By RON ERICKSON

Today, gross registration at Montana State University is 2,477 students. Twenty years ago the Kaimin reported that a registration of 1,658 was the highest enrollment in the University's history, and ten years ago, less than a thousand students were enrolled fall quarter for instruction.

Although these figures take a zig-zag, the marked ups and downs in past registrations don't show up until the coming of World War II, which in 1943 left 690 students to rattle through MSU's halls and then flooded the campus in '48 when 3,400 people elbowed their way to class.

Rags to Riches

This type of rags to riches quirk in enrollment seems to have been repeated twice in the last 20 years, once during, and after the depression, and again during, and after the second World War.

In the fall of '34 Dr. Charles H. Clapp, president of the University at that time, explained the 20 per cent jump in enrollment from '33 to '34 as a result of "...numerous high school graduates who had been employed for a year or more in CCC work and other activities

had found it possible this year to attend."

Enrollment Soars

Registration soared steadily from then on, until 1940 when the second World War took eligible men from schools the nation over. Not until 1946, when a throng of 2,000 new students returned to school, did enrollment come to life.

From 1946 to '49 all kinds of records were broken with an average of over 3,300 students per year with a high point of 3,458.

The leveling off effect of gradu-

ating veterans, and the Korean War have held registration to an average of 2,300 since 1950, but this fall's figures show a 10 per cent increase over last year, and a glance at 1955 high school graduating senior figures promises another large jump next year.

HUNTING SUPPLIES
&
GOOD FOOD

—24 HOURS DAILY—

The Turf

in
MISSOULA

Turmel Motor Co.

88—OLDSMOBILES—98

Safety Tested Used Cars

Complete Shop Facilities

Phone 2-2683 224 W. Main

Welcome Alumni

To MSU Homecoming

We have film and cameras to snap or film shots of the Homecoming Queen and the Grizzly's touchdowns.

CATLIN'S STUDIO & CAMERA SHOP

Phone 5-5364 for appointments
121 So. Higgins Ave

BOOKS & SUPPLIES

SPORTING GOODS

GIFTS

CHILDREN'S T-SHIRTS, M SWEATERS,
SWEAT SHIRTS

TOILETRIES

CANDY-TOBACCOS

Keyed to the student needs, the Student Book Store provides a place to shop economically and easily. Sound management and efficient operation bring you the most favorable prices. In short . . . your best shopping bet is the STUDENT STORE. Don't forget the STUDENT STORE mail-order system which allows you to take advantage of many fine buys even after you graduate.

STUDENT BOOK STORE

STUDENT UNION BUILDING

Relaxing Refreshment Between
Classes in Your

STUDENT FOUNTAIN AND CAFETERIA

STUDENT UNION BUILDING

YOUNG IDEAS

Afoot-

Kickerinos
ORIGINALS

OF COURSE!

Light—lovely—with the newest "low down" on easy going! An exciting new collection that foots the bill smartly for every occasion and every outfit—street, school, sports, career and fun! Smooth leathers and velvety suedes.

\$7.95



DIXON AND HOON SHOE CO.

Last Day Today For Sentinel Pictures

Today is the last day of Sentinel picture taking, and students who have missed appointments are urged to have their pictures taken in the makeup room of the Student Union between 1 and 5 p.m. About 750 pictures have been taken, and the remainder of students may come today without appointment.

The Montana KAIMIN

Established 1898

The name Kaimin (pronounced Kimeen) is derived from the original Salish Indian word and means "something written" or a "message".

Published every Tuesday, Wednesday, Thursday, and Friday of the college year by the Associated Students of Montana State University. Represented for national advertising by National Advertising Service, New York, Chicago, Boston, Los Angeles, San Francisco. Entered as second-class matter at Missoula, Montana, under Act of Congress, March 3, 1879. Subscription rate \$3.00 per year.

Printed by the University Press

55

Member,
Montana State Press Association
Member, Rocky Mountain
Intercollegiate Press Association

Editor, Bob Newlin; Business Manager, Joan Brooks; News Editor, Ed Stenson; Campus Editor, Kim Forman; Society Editor, Pat O'Hare; Sports Editor, Art Mathison; Photographer, Hoover Ogata; Circulation, Richard Spaulding; Faculty Advisor, E. B. Dugan.

4 B's CAFE

Montana's
Original



**GUARANTEED
STEAKS**

Clowns or Dancers, MSU Field House Handles All

By **DON DOOLEY**
Alumni who have not visited the MSU campus for several years will notice many changes that have taken place since they were here last.

Among the most spectacular of these changes is the Field House. Approval to begin construction was received on August 15, 1952 and the building was first used for a basketball game between Indiana and MSU on December 18, 1953.

The Field House covers more than an acre of ground and can withstand a maximum wind of 60 miles per hour.

A ventilation system has been installed that changes the inside air approximately four times each hour. This is necessary because the building is so large that a severe drop in the outside temperature could cause clouds and rain inside the arena.

Construction cost was \$697,258.40. The total volume is 2,895,500 cubic feet giving a cost of 25.1 cents per cubic foot.

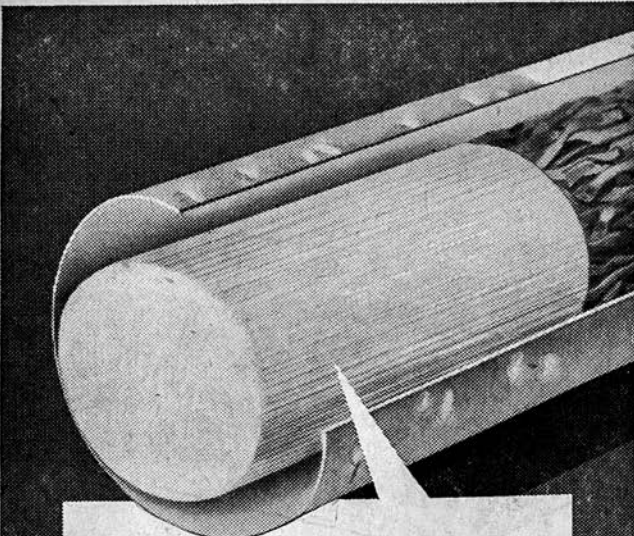
The building seats 6,500 people for athletic contests and an additional 3,000 in chairs on the floor for non-athletic events.

The Field House can be used for sports, commencement exercises, concerts, dances and a variety of other things. Within the last few months it has been the scene of a horse show, water follies, circus and a University dance.

The surface that was used for the dance covers almost the entire floor of the building. The base for it is the basketball floor. It is said to be the largest portable dance floor in the world.

This Homecoming the Field House will be used for the alumni luncheon Saturday and a dance by the Johnny Wright band Saturday night.

What have **VICEROYS** got that other filter tip cigarettes haven't got?



THE ANSWER IS
20,000 FILTERS
IN EVERY VICEROY TIP

Inside every Viceroy tip is a vast network of 20,000 individual filters to filter your smoke over and over again. You get only the full, rich taste of Viceroy's choice tobaccos . . . and Viceroy's draw so freely.

Yes, you get Viceroy's remarkable new tip . . . with 20,000 individual filters . . . plus king-size length for only a penny or two more than cigarettes without filters.

**WORLD'S LARGEST-SELLING
FILTER TIP CIGARETTE**



Only a Penny or Two More than Cigarettes Without Filters

Welcome Alums! Stop at the
WEE GIFTE SHOPPE

The only Gift Shop your side of the river.
Reasonable and Worthwhile
Black Iron — Bone China — Basketry
Miniatures

Near High School on Highway 93

*Processors and Distributors
of top quality meat
and meat products*

John R. Daily, Inc.

115-19 W. Front

5-5646

3-3416

Homecomers---!

**DINE
and
DANCE**



Nightly Except Sundays

JERRY BENSCH,
Organist

AT THE

MONTMARTRE CAFE



12.95

WINTHROP

**Weather
Grains**

*in Soft Cashmere Grains
but just as rugged!*

Come rain . . . come shine you're high in style and dry afoot in Winthrop Weather Grains. Only Winthrop could give you full weather protection plus walk-easy comfort and smart leather lustre.

**OGG
SHOE / CO**

Grad of 1895 to Attend 1954 MSU Homecoming

Alice W. Reeves Stewart, Seattle, will probably be the oldest MSU graduate to attend Homecoming. She graduated with the first class of MSU in 1895.

Of the eight people who graduated with the class of 1904, two are planning on attending the Old Timers dinner in honor of the class of 1904 Friday night. They are Moncure Cockrell, Kalispell, and Roxy Howell Derge, Cranford, N. J.

Col. Page Bunker, Dallas, Tex., will not be able to attend. Walter Hammer, Hardin, the only other living member of the class has not yet replied.

MSU's Fight Song, 'M' Club, Gym, Dornblaser Field All Born At Past Homecomings

By BARBARA MELLOTT

Homecoming's beginning, in 1914, forwarded by the late President Edwin B. Craighead, resulted from the enthusiasm of alumni in returning to campus throughout the year. Wanting them to renew acquaintances, President Craighead formulated plans for a two-day event.

Included in the agenda was the formation of the first "M" club by alumni and students holding athletic letters. Bobcats lost to the Grizzlies that day, with "Click" Clark and Ott Romney playing for MSU and MSC respectively. In 1925, these two men were coaches of the university and college teams at MSU's Homecoming, when Dornblaser field was dedicated.

Richard Howell, a law student in 1914, wrote "Up With Montana" for the homecoming SOS. Written with MSC in mind, Howell's words read "Up with Montana, boys, down with the Ags..."

An unofficial Homecoming in 1915 saw the Grizzlies hold Syracuse to a 6-6 tie. World War I drew many alumni and students into the service so no Homecomings were held 1916-18. Over 600 graduates, however, returned in 1919 to watch the Grizzlies play Washington State.

At the North Dakota Aggie-MSU homecoming game in 1921, freshmen shoveled drifted snow from the field and upperclassmen marked the yardlines with red kalsomine. Most rooters were wrapped in blankets and went into the gymnasium between halves to "snake-dance" and get warm.

Montana State college held a joint Homecoming with MSU in 1922 at Missoula, when the men's gymnasium was dedicated. At this event the alumni took a challenge which resulted in the present athletic field.

Grizzly fans went to Bozeman for Homecoming in 1923. Bozeman's buildings, most of them new, were dedicated at that time.

The late Dean A. L. Stone of the journalism school told the alumni at the 1921 Homecoming, "The services we render one another and the University are the manifestations. The service we give the University in keeping the traditions and standards of the institution are the greatest. Those services which have made the "M" glorious, memories of those who have gone before, typify the real spirit of Homecoming."

LAST YEAR'S QUEEN

Mary Ellen Erickson, KKG, was crowned 1953 Homecoming queen.

HOMECOMING DANCE



SAT.,
Oct 16

at the

American Legion Club

featuring

Gene Bradley

and his SEVEN MEN OF MUSIC . . .

. . . playing for your dancing and listening pleasure
and featuring real DIXIELAND MUSIC.

ADULT PUBLIC INVITED

DON'T MISS IT

WELCOME ALUMS



as advertised in



it's soft as a Highland mist

MCGREGOR

balmoral sweater

In luxurious, 100% Australian lamb's wool, it has the softest texture, you've ever caressed, the warmth of a winter fireside . . . plus the smart, continental styling of a carefully rolled collar. 36-46

The Men's Shop

Florence Hotel Building

A GOOD PLACE TO EAT QUICK LUNCH CAFE

1/2 Block West of Old Fire Station

CHOICE FOODS

ALUMS: Come in and chat with

ARNOLD A. PFAU, ex-'51

Owner and Operator

Unexcelled in Quality and Courtesy



CALL A YELLOW CAB
6-6644

WELCOME ALUMS

FROM

BON TON BAKERY



BON TON BREAD

BUILDS STRONG BODIES

MSU HOMECOMING

and

Highlander

None Finer

. . . Anywhere

A Premium Beer



Brewed by the
**MISSOULA
BREWING CO.**



GOLDEN PHEASANT
11:30 A.M. TO 12 P.M. WEEKDAYS
11:30 A.M. TO 3 A.M. SATURDAYS
(Closed Wednesdays) Phone 9-9953

Welcome Alums!
TRY
SICKELS
Texaco Service
Complete Lubrication
Phone 9-9816
E. Broadway & Madison

7-up
You Like It
It Likes You

YOUR CAR WILL LOVE OUR SERVICE



Campus Changes in 50 Years But Oval Remains the Same

BY MARY LU ZIMMERMAN

In the old days when the University president drove around in a horse-drawn carriage, women lived in the Math Physics building and horses were shod in the back of the Old Science building, there were only five buildings on the campus, plus the president's mansion. That was 50 years ago.

Today there are more than four times that many permanent buildings.

A look at a photograph of the campus taken 50 years ago shows only University hall, Math Physics building, Old Science building and the women's gymnasium. Math Physics building, with porches in front and back, was called Craig hall and served as a dormitory for women. Men lived in town, since

they didn't have a dormitory until 1921.

Science building was not only used for classes, but also housed a foundry in the back where horses were shod. The heating plant was located there, too.

The women's gymnasium was the men's gymnasium then, the only one on the campus. The present Health center was the president's mansion. President Craig was the first occupant. Between Craig hall and Science building was a little bicycle shed, just an open air affair with a roof.

There was no Greek row. Barbed wire fences enclosed empty lots in the area around the campus, extending three blocks west, north to the river and all the way to Pattee canyon. Higgins bridge was west of the present location and a sidewalk angled from the University through the site of the present Student Union and to the bridge.

But the scene has changed. Not only 50-year alumni, but also five-year alums are going to find a different setting. Within the past year, four new buildings have been completed, the Women's center, the Music building, Craig hall and the Field House, all finished the fall of 1953. The Student Union-Food Commons is expected to be ready by January. New plans for the future recently released by President Carl McFarland include

installing plantarium equipment in the present Fine Arts building, construction of a new Health center to be located at the northwest corner of the intersection of Maurice and Eddy, and extensions on some of the dormitories.

Buildings go up, trees come down, grass is planted, but one scene on the campus hasn't changed with the times. Even though cottonwoods surrounded the oval 50 years ago and now elms, the oval itself hasn't changed. The rock in the middle still juts skyward. And if only we were able to glimpse the moving picture then I bet we would see students vigorously campaigning to "keep 'em off the oval."

1953 Chevrolet
Bel Air Convertible
5,000 Miles
SACRIFICE PRICE
Phone 3-3926 Evenings

EVERYTHING
for the Auto at
Croci Bros.
AUTO SERVICE

- Accessories
- Motor Tuning
- Brake Repair

126 W. Spruce

Webster's Corner
Innate—Inborn; native; natural; not acquired; as, innate vigor; of nonliving things, existing within; belonging to the essential nature of; as, an innate defect in a plan. 2. Philos. Originating in, or derived from, the constitution of the intellect; not acquired from experience as innate ideas.—innately, adv.—innateness, n.

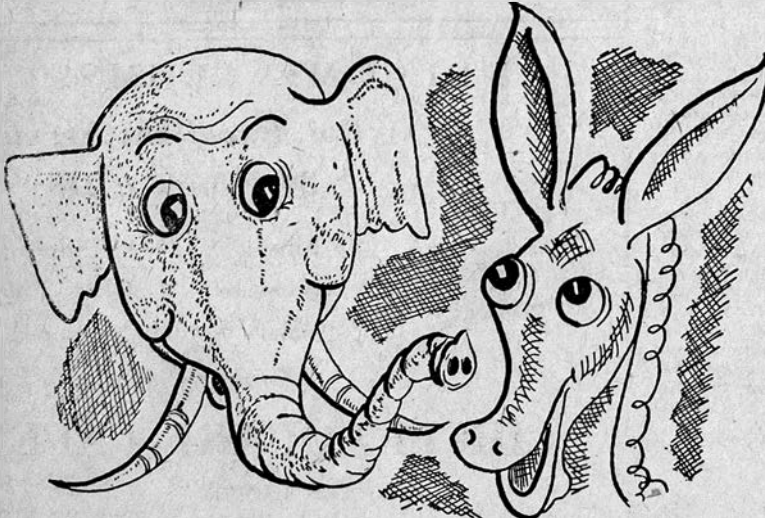
Get Your Duck and Goose Hunting Supplies and Prepare for Big Game Hunting
The Sportsman
123 West Spruce

ALASKA, HAWAII and the WEST
Register now for Mid-Year vacancies. Certification Booklet with Free Life Membership.
HUFF TEACHERS AGENCY
2120 Gerald Ave., Missoula Ph. 6-6653
39 Years of Placement Service

Auto Repair Shop
Balance Wheels
Front End Alignment
Electrical Work
ELI WOOD
303 1/2 East Front Phone 4-4200

NOW!
DOUBLEBURGERS
in a 3-section bun
"Meal in a 'burger"
55c
Fish & Chips
"THE FOOD THAT TASTES LIKE MORE" at the
Salad House
219 West Broadway
Across from the Courthouse
When in Hamilton, visit the Trails Inn Cafe

Welcoming Old Grads Back to Montana's Campus for Homecoming!
J. M. Lucy & Sons
Complete Home Furnishings Since 1889



Rhythm in Blues

with

Johnny Wright's Orchestra

featuring

Marvin AND Johnny
The Flairs

"Let's not talk politics, let's go hear Johnny Wright's Orchestra."

Dancing from 9 to 1 a.m.

Saturday, October 16

\$1.00 per person

Field House

First Inland Performance of the Rhythm in Blues

Hot Rythm in Blues is the style of Johnny Wright's six-piece all-Negro orchestra playing for the big Homecoming dance this week end. Top musicians playing familiar songs in a variety of styles and rhythms, tops in popularity with colleges of the west coast. Wright's orchestra has appeared in many of the "hot spots," among them the Crescendo on Sunset Strip.

Marvin and Johnny, featured vocalist duo with the orchestra has made a number of recordings including "Cherry Pie" and "Tick Tock," a song they made famous. The Flairs, a quartette of renown, features singers who put "Love All Night" on the best seller lists of the nation's music shops. They have also recorded "Porky Pie," and many others.

Saga of Greek Migration Told by Kaimin Reporter

BY TOM MC CARTHY

More than 2,000 years ago a band of hairy-chested Etruscans

filled their goat skins with wine and headed for Greece to pillage towns, carry off women, and move the civilization of that ancient land to what later became Rome.

The invaders went about their work with gusto, and returned home in due course with several boatloads of empty wine sacks, women, and slaves. They had had one helluva party and were ready

now to get down to work and build an empire.

The Etruscans, however, were a rather clumsy lot, and a number of the Greeks were left alive to rebuild what they could of the Golden Age. This they did for a few years until a fellow named Demetrius decided to organize a group of pilgrims and head for the U.S.A.

Demetrius, a far-sighted chap, arrived in Virginia in 1600, and, seeing that he had passed by the historians, moved across the Appalachians to wait for Sir Walter Raleigh, who was due in the 1609 shipment.

But about that time there was a fabulous rainy season. Demetrius who operated on central sun-dial time, let three or four centuries slip by before he got the word it was time to go back to Virginia.

Being a card-carrying Greek, Brother Demetrius walked up to the Student Union cafeteria of William and Mary and asked where he could find fraternity row.

William, who also had the University food concession, informed Brother D. that fraternities weren't in existence, and that the school frowned upon such things anyway. Willy added that if frat men ever started serving meals, he would force all Greeks to go sub rosa (an archaic expression meaning "fireside").

Since Brother D. was a first hand colonizer of no mean ability, he took matters in his own hands and put together Phi Beta Kappa.

The idea caught on faster than white bucks, and a few years later every saucy collegiate could boast of a secret handshake and a personalized mug.

Later, Phi Beta Kappa dropped its secrecy and went scholastic. It now is the distinguished granddaddy of all fraternities, and has as members top scholars in the liberal arts field.

One thing led to another, and now there are eight men's social fraternities at MSU, with a total membership of more than 500. This fall 136 new pledges were added after a rush season in which there were 81,200.5 handshakes (one rushee had two left hands, thus the .5).

But today's fraternities are mere reflections of those ancient times. The frat man still delights in filling goat skins with wine (and emptying them), carrying off women, and running wildly about town.

And, he also has some of old Greece in him, and tries to capture the gracious fellowship of the Golden Age, always with an honest desire for knowledge.

WEBSTER'S CORNER

Fabulous—Feigned, as a story or fable. Based on fiction. An exaggeration, passing belief, absurd.

WELCOME ALUMS!

Sandy's Sales Service

- Kaiser
- Willys
- New & Used Jeeps
- Complete Automobile Service
- Body Rebuilding

Phone 2-2197 123 W. Pine

Headquarters for
Costume Jewelry
STOCK CUT RATE
DRUG

WELCOME ALUMS!

Cummins
STORE FOR WOMEN

Starts Sunday at the FOX



"The comedy all America is talking about!"



We're Talking about the Woman you love

... and we're sure you'll agree with us she's one in a million and deserves the finest diamond you can afford. Such a ring will be easiest to select here where your satisfaction is assured in every transaction. Don't buy until you have visited us.

STOVERUD'S
House of Fine Diamonds

The HAUGEN STUDIO

Welcome 1954 Homecoming Alums

30 YEARS IN MISSOULA

"A picture for every need"

520 S. Third W.

Phone 2-2896



Hunting Specials

Ranger Wedge Crepe Sole Bird Boots \$12.95

Bone Dry Close Out Non-Slide Cord On End Sale, 19.50 Value Only \$14.95

Ranger Pac with Nob Soles, \$13.50 value at \$9.85

Yandt's
MEN'S WEAR

The Store for Men and Women Who Buy for Men

Your Barber
is your hair's
Best Friend



Where it's always

Homecoming for the Campus Crowd

Paul Gilbert, Proprietor

VARSITY BARBER SHOP

829 South Higgins

WELCOME ALUMS!

For Excellent Service
24 Hours a Day



- | | |
|------------|------------|
| ☆ Chinese | ☆ Chicken |
| ☆ American | ☆ Sea Food |
| ☆ Steaks | ☆ Chops |

Dining Room Service

CIRCLE-SQUARE CAFE

PARK HOTEL

Phone 4-4888 for Reservations



He's
Taking
Me to
the
BLACKFOOT
TAVERN

**After the Game
the College
Crowd Gathers**

**at the
NORTHERN
BAR**
201 W. Railroad
Open 8 a.m.-2 a.m.

ABBOTT AND COSTELLO meet CAPTAIN KIDD
with CHARLES LAUGHTON
Second Feature
COLUMB SOUTH
AUDIE MURPHY
JOAN EVANS
Friday-Saturday
RIALTO

**Four Desperate Men . . .
and a love-haunted lonely girl!**
**"Four Guns to
the Border"**
Starring Rory Calhoun, Colleen Miller, George Nader,
Walter Brennan, Nina Foch, John McIntire
IN COLOR BY TECHNICOLOR
Starts Saturday **WILMA**

**WILMA THEATER
Greater Artist Attractions
SEASON 1954-1955**

**SIGMUND ROMBERG
Music Festival** Thurs., Oct. 15, 8:15 p.m.
STARRING: Virginia MacWatters, Glenn Darwin, William Olvis
Vivacious Metropolitan, The Singing Air, Versatile Tenor of
Singing Actress, Force Sergeant, Concert Operetta

With a Chorus of Sixteen Mixed Voices of Romberg Favorites from "The Student Prince," "Blue Paradise," "Maytime," "Desert Song," "New Moon" and others.

**The Great ALEXANDRIA DANILOVA
and Her ENSEMBLE
Great Moments of Ballet, Wed., Nov. 24, 8:15 p.m.**
Alexandra Danilova, and her ensemble in "Great Moments of Ballet." This will be Danilova's first tour of the United States with her ballet group, although she has toured every nook and cranny of it as prima ballerina with the Ballet Russe.
In her ensemble will be two male dancers and a ballerina. A two-piano team will provide the music. High lights of their program will be Tchaikovsky's "Nutcracker Suite" and Zachary Solov's contemporary comedy, "Mile. Fifi."

**The VIENNA CHOIR BOYS
Sacred Songs, Viennese Waltzes and a
full Costume Operetta, Friday, Feb. 11, 8:15 p.m.**

FERRANTE and TEICHER, Friday, Mar. 4, 8:15 p.m.
Brilliant Duo Pianists, on their fifth successful coast to coast tour. Edna Wilma Sharp Memorial Guest Appearance.

BIDU SAYAO Wed., March 16, 8:15 p.m.
Glamorous "Brazilian Nightingale." Star of foremost Opera Houses on three continents.

Season Subscriber Tickets on Sale Now—All Seats Reserved
Also single admission tickets are now available on the SIGMUND ROMBERG Concert tonight. No reduced prices will be available to students this season.

(Check Preference)	For Reserved Seats all five performances	Single Admission Romberg Concert
Main Floor	Price Incl. Tax \$9.90	Price Incl. Tax \$8.85
Loge		
(Bal. 1st 4 rows)	\$9.90	\$8.85
Balcony		
(Next 9 rows)	8.25	2.75
Balcony		
(Next 5 rows)	6.60	2.00

Call 4-4166 or 2-2476 for reservations to these concerts. Pick up tickets at room 104 in the basement of the Wilma Bldg. before 4 p.m. or at the box office afterwards.

Society

By BARBARA MELLOTT and JEAN HERBERT

Floats, queen candidates and all Homecoming activities take the spotlight this weekend as MSU students work to entertain the alums.

Alpha Phi

Verna Johns, Great Falls, received a diamond from Jack Kessner, also of Great Falls.

Wednesday dinner guests included Mrs. Wallace Brennan of Missoula, national director of programs; Dean and Mrs. G. B. Castle; Dr. and Mrs. A. S. Merrill, and Mr. and Mrs. A. C. Cogswell.

Sigma Phi Epsilon

Chuck Kester, Valier, is the new house president.

Phil Stanley, ex '54, Wallace, Idaho, has rejoined the active chapter.

Sigma Kappa

Pledge class officers include Shirley Smith, Vananda, president; Janet Dewing, Livingston, vice president; Deidra Herzog, Butte, secretary; Janet Rickert, Hungry Horse, treasurer; and Mary Antonich, Harlowton, social chairman.

Delta Gamma

Sue Garlington, Missoula, received the Sigma Nu pin of Cole McPherson, also of Missoula.

Cathy Booth, Helena, received a diamond from Tom VanMeter, Phi Delta Theta, Ogden, Utah.

New Hall

Officers recently elected are Romona Marquardt, Wolf Point, president; Coleen Baker, Beach, N. D., vice president; Kay Mueller, Bozeman, publicity; and Carole Lee, Hamilton, social.

Sigma Chi's serenaded Shirley Fournier Oct. 11.

Phi Sigma Kappa

Bob Montgomery, Fort Benton, transferred to the College of Education at Great Falls. Bob Lasater, Ekalaka, has withdrawn from school to enter the service.

Theta Chi

Pledge officers include Rex Chamberlain, Great Falls, president; Ron Rundie, Chicago, vice president; Ken Wickham, Hamilton, secretary; and Bob Peterson, Butte, treasurer.

Ron Miles, Hot Springs, and Darwin Paffinger, Hampshire, Ill., pledged this week.

Kappa Alpha Theta

Mrs. Sprout, Theta housemother, was honored by the Theta alumnae at a tea.

Marlys Haney, Butte, has received a diamond from Don Erickson, SAE from Havre.

Marlene Ramsey, Shelby, and Kim Williamson, Libby, were initiated Sunday.

Synadelphic

Marjorie Sprester, Milwaukee, Wisconsin, is engaged to Jack O'Brien, also of Milwaukee.

Miss Anne Platt was a Tuesday night dinner guest.

Sigma Nu

New pledges since Monday are Dan DeShazer, Eureka; Bill Drum, Miles City; and Jerry Gaughan, Missoula. Larry Kartak and Cole McPherson, both of Missoula, were initiated as actives Sunday.

Pledge officers are Pat Fox, Hardin, president; Dick Riddle, Libby, vice-president; Keith Robinson, Kalispell, secretary; and Bob Miller, Great Falls, treasurer.

Delta Delta Delta

Kay Wohlgenant, Miles City, received a Sigma Nu serenade Monday night. Miss Wohlgenant is pinned to Bob Newlin, Lewistown.

Kappa Kappa Gamma

Miss Ruth Ann Tyler, traveling field secretary from national headquarters has been a house guest this week.

Dinner guests this week included Tommie Lu Middleton, (please see page ten)

ALUMS

**Welcome
home . . .**

- ★ Juicy Hamburgers
- ★ Curly French Fries
- ★ Thick Shakes
- ★ Malts

**—IN AND OUT—
Whistle Stop**

Hey Kids . . . !



**YOUR FOLKS WILL ENJOY
THEIR STAY AT THE NEW
Parkway Motel**

Opposite the Fox Theater
in the Center of Town

**MSU is Going Places!
And . . . So Can You**

With our New Line
of **HO-GANOS** Casual
Hats in Suede or Kidskin

**They're So Practical . . . And Oh
So Packable—**

Wonderful to wear with Tweeds & Knits. Chic too, worn with cocktail clothes. . . . Round the clock wearability. Designed by the famous California designer

ROSE HOGAN to solve your hat wardrobe problem. Choose from 25 luscious colors in finest imported suede or kidskin.

BELTS . . . Ho-Bands Contour Belts in suede or kidskin for any type of figure from a 22 to 44. We proudly present our "Going Places" accessories, and invite you to see them at



The Spinning Wheel

YARN & GIFT SHOP

115 E. FRONT ST. . . . NEXT TO RIALTO THEATER

"We're first with so many beautiful things for those who love to knit and crochet!"

IN MISSOULA AT . . .

The Mercantile

ALL-CAMPUS FAVORITES—

Pegged Denims



The preferred peg denim for quality, fit, and campus styling. Tailored Hollywood drape with pleated front. 16" pegged 1" cuffs. Sleek continuous waistband, equi-lift belt loops (not tunnel loops as shown). Heavy weight denim, zipper fly, heavy sail pockets. Mint, Pink, Blue, Black—absolutely colorfast won't fade!

sizes 29-36 **395**

Varsity Shop . . . street floor

MSU'S ALL-TIME ALL-STAR FOOTBALL TEAMS

(Selected by Ray T. Rocene, Dean of Montana Sport Editors)

Year	Players	Position	Players	Year
1920	Paul Freeman	Center	George Saylor	1934
1921	Harry Dahlberg	Guard	Aldo Forte	1938
1917	Sam Cook	Guard	William Hawke	1934
1917	Christian Bentz	Tackle	Leonard Noyes	1937
1913	Paul Dornblaser	Tackle	Henry Ford	1949
1916	Earl "Click" Clark	End	Naseby Rhinehart	1934
1921	Fred "Cub" Daylis	End	Ray Bauer	1950
1926	Bill Kelly	Quarterback	Tom Kingsford	1950
1921	Steve Sullivan	Back	Milt Popovich	1937
1925	Ted "Chief" Illman	Back	Eso Naranche	1941
1915	Cecil Vance	Back	Jack O'Loughlin	1949
1915	Alfred "Ribs" Robertson	Back	Robert Stansberry	1933

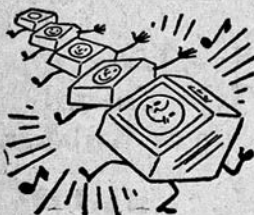
Beginning with the fall of 1951, Ray began to select his third All-Star Grizzly team. Halfback Robert Byrne, 1951; tackle Jim Murray, 1952; and end Ed Anderson, 1953, have been selected.

Classified Ads . . .

CALL Dave Boots for radio and TV repairs, antenna work. Free pick-up. Phone 9-2884, 3-9 p.m. 1f

LOST: Circular slide rule with case. Call Chuck Jankel 9-2170. 10c

One-Stop Service



Laundry washed and dried in an hour and a half. Just leave it! We take care of it for you.

Bill's Launderette

503 Myrtle Phone 5-5468
We Give S&H Green Stamps

Enjoy Yourself Grads!



You're Always Welcome at
Westerner's
451 N. Higgins

Welcome Alums! Stop in and see us while you are back in town.

Two Eggs Fried	45c
Two Eggs Scrambled	45c
Cheese Omelette	65c
Ham Omelette	65c
Bacon and Eggs	75c
Ham and Eggs	75c
Plain Omelette	45c

PALLAS CANDY SHOP

JIM (the cleanest man in town) THANE SAYS:

IF THE WEEKEND RUSH OF HOME-COMING FESTIVITIES has caught you in your nothing at all, and the closet is full of dirty duds, there is no need to miss a beat! Just remember our special service at regular prices! Our motto is "IN AT TEN DIRTY, CLEAN AT TWO THIRTY" (Saturday in at nine, ready at noon, we close at one) and we are eager to serve you. APPROACH THE WEEK END WITH CONFIDENCE! Look your best in a wardrobe cleaned and pressed in our modern plant. We absolutely guarantee your COMPLETE SATISFACTION OR WE DON'T CHARGE YOU.



DRIVE-IN CLEANERS

DIAL 3-3131 FOR FREE PICKUP AND DELIVERY



Mums for Homecoming

"Welcome Back Folks"

Wear a Mum—and show which side you're on.

"Home Grown Flowers Last Longer"

Garden City Floral Co.

119 N. Higgins

Phone 6-6628

Tribute Is Paid to Unsung Grizzlies Who Were There Leading the Greats

By BILL LARCOMBE

Saturday is Homecoming, and thousands of alumni will crowd into Dornblaser stadium to see the Grizzlies tangle with the Utah State Farmers. No matter what the outcome of the contest, many of the alumni will still believe there is nothing like that Grizzly team that played when they were undergraduates on campus.

In retrospect, perhaps they may be right, for who can forget the feats of such Grizzly football stars as "Wild" Bill Kelly, Harry Dahlberg, Aldo Forte, Naseby Rhinehart, Milt Popovich, Eso Naranche, or Tom Kingsford, to name a few.

These are the names the alumni will remember, but what of the other men on the teams, the guards who opened the holes, the ends who rushed the enemy passer, or the blocking back who ran interference? It is these men to whom we pause to pay tribute.

Remember Claude McQuarrie?

Claude McQuarrie, a Missoula lad, came to the University and played fullback in '15 and '16. Claude attended West Point the next three years and in '19 was named second-string All-American fullback by Walter Camp.

While McQuarrie was making his mark at the Point, a young quarterback was just beginning his career as one of the finest athletes in Montana's sports history. Although this boy was better known as a quarterback, he also played at halfback, and for a few practice sessions even filled the fullback slot. He was also center on the basketball team and a sprinter in track until he pulled a muscle in the 1920 Washington Relays. Today, Harry Adams is Montana track coach as well as chief football scout.

The years 1924 and '25 saw Montana come up with halfback Russell Sweet, called by Harry Adams "the greatest kicker I've ever seen." On January 1, 1927, Sweet played in the East-West Shrine game in San Francisco and scored the winning touchdown for the West on a pass from "Wild" Bill Kelly.

Or Lawson Sanderson?

A recently retired Major-General of the Marine Air Corps played a busy halfback spot for the 1914-15-16 Silvertip teams. His name is Lawson Sanderson.

In 1927 and '28, Waldo Ekegren, one of the best halfbacks in the school's history, was running wild while Eddie Chinske was barking signals from the quarterback spot. Two of the better linemen on the '27 team were tackles Lou Vierhus and Clark Whitcomb.

Clyde Carpenter, Grizzly coach in 1942, was one of the better halfbacks on the 1928-29-30 clubs. One of the stalwarts in the forward wall was tackle Russell Peterson.

And George Sayatovich

From 1932-34 the Grizzlies had an outstanding pivot man in George Sayatovich. Captain in '35 was John Sullivan, a pint sized guard who was characterized by the terrific fighting spirit so essential to a team leader.

Teaming up in the 1936 Grizzly backfield were Milt Popovich, Paul Szakash, and Bill Lazetich. Szakash, used as a blocking back for "Popo" is coaching at Hamilton, and Lazetich, a line player

in his own right, is now coaching at Billings.

And so it goes down through the years, as we recall the names of stars of past decades who have become so much a part of the Homecoming spirit of Montana.

Monday's Football

Field one—Forestry vs. Craig hall (Leuthold and Webb, officials).

Field two—Sigma Nu vs. Alpha Tau Omega (Stolz and Kann, officials).

Field three—Phi Delta Theta vs. Phi Sigma Kappa (Anderson and Manuel, officials).

A & W Root Beer Stands

South Higgins

West Broadway

"Home of that original, old-fashioned Root Beer"



Attention Students

Our season is fast coming to a close. This week end marks the close of the stand on South Higgins, BUT the stand on West Broadway will remain open until Nov. 1st, weather permitting.

Our Thanks for Your Patronage

A & W Root Beer



You'll be as pretty as any in this shirred dance dress of rustling heirloom acetate. Add the buttoned, mandarin collar jacket with hand-made medallion trim, and you'll shine at any occasion that's big! Sizes 7 to 15.

Cecil's

NOW! SOMETHING NEW!

The Coal That
BURNS and
BURNS and BURNS
Homogenized
COAL
from the
Missoula Coal
and Oil Co.
Phone 3-3662 or 3-3630

MSU Greats Live Again . . . Homecoming Grads Recall When . . .

BY KEN BYERLY

Since that sunny Saturday afternoon in November, 1897, when 11 husky University students fell before an eager Butte Business college squad, 10-4, in the then-infant game, football has been the fall madness of Missoula sports enthusiasts.

As Saturday's coming game with Utah State illustrates, one of the top thrills of these fall classics is the Homecoming struggle.

Grizzlies Win 88-0

The 1905 Grizzlies pounded the Fort Shaw Indians 88-0, the 1909 squad was unbeaten and the 1914 eleven stomped the Butte Ramblers 87-0, but undoubtedly one of the top thrills of those bygone days was the first Homecom-

ing game in 1919.

Present Grizzly track coach Harry Adams was the star of the game, played against Washington State college. Adams snared a short pass and pounded 15 yards for a touchdown early in the game and later twisted 50 yards for the final Montana score. But it was to no avail as the massive Cougars rolled to a 42-14 victory.

Swede Dahlberg captained the 1920 Silvertip squad as it swept to a 133-0 slaughter of little Mount St. Charles college early in the season. Steve Sullivan, who tallied six times in the record-setting massacre, ran wild against Montana State for three touchdowns as the Grizzlies won 28-0 in the Homecoming clash.

The 1921 Silvertips eked out a

7-6 victory over North Dakota State in the Homecoming clash. Sullivan's successful extra point boot, following Tom MacGowen's recovery of a fumble for a TD, was enough to send Montana fans home happy.

No Record from '22 to '32

Available records show no indication of Homecoming games from 1922 through 1932 and it seems a shame to omit the feats of such unforgettables as Ted Illman, Bill Kelly, Ed Chinske and All-American mentioned half-backs Tom Davis, Waldo Ekegren and Bob Stansberry. Russ Sweet and Jim Morrow were other Grizzly stalwarts during this era.

Stansberry was on hand for the 1933, 26-0 Homecoming conquest of Utah State and he and Henry Blastic ripped through the hapless Aggies for decisive gains. Naseby Rhinehart patrolled one of the flanks that day and showed the promise that was to bring him all-conference honors in 1934.

A poor 1935 season was concluded with a 0-0 struggle with Oregon State. More than 5,000 looked on as Milt Popovich raced 73 yards with a punt against the favored Beavers in the game's longest run. Bob Breen, center, was a line bulwark.

The 1937 team, captained by Popovich, rolled up a 7-1 record and screaming fans heralded a resounding 23-0 Homecoming conquest of Gonzaga. Idaho fell victim in 1938 by a 19-6 score as Aldo Forte mopped up the Vandals from his tackle slot. And Eso Naranche appeared on the Grizzly scene in a 1939 season dimmed by a 23-0 Homecoming loss to Gonzaga.

Nearly Upset UCLA

An obscure halfback named Johnny Reagan left the Grizzly bench late in the third quarter to rifle a 44-yard pay-off pass to Karl Fiske as the Silvertips dumped Idaho in the 1940 classic, 28-18. 1941 was Eso Naranche's big year and he paced the Grizzlies to a great season and a near upset of powerful UCLA. Against North Dakota State in the Homecoming clash, the irrepressible Eso

tossed a 75-yard touchdown pass to Jack Scott in the first half and then plunged over in the second half to give Montana a 13-6 win.

Coach Clyde Carpenter and his boys suffered through the worst season in Montana history in 1942, including a 21-0 loss to Idaho, as a fitting prelude to World War II. From 1943 through 1945 a bigger battle was being fought on a

bigger gridiron from the Rhine to the Yangtze, and blocking and tackling were forgotten as Dornblaser lay idle.

Cougars Beat Grizzlies

The homecoming tradition was resumed in 1948 to the chagrin of all as the visiting Washington State Cougars romped to a 48-0 win, thus avenging their upset, (Continued on page ten)



How about listening to
this wise old owl?

He will tell you
to eat at

HAPPY HENRY'S
Palace Hotel

Welcome Alums and Students!

Hanson's Texaco Service Co.

Jim Hanson, Operator

- Motor Tune-up
- Lubrication
- Firestone Tires
- Choldin Automatic Car Wash
- Minor Repairs
- Batteries, Accessories
- Overnight Storage

Open 7 a.m. to 1 a.m.

Phone 9-7833

W. Front & Stevens (Behind Florence Hotel)



Drive In

That's right! For that
after-the-game snack . . .

- ★ STEAKS
- ★ PRAWNS
- ★ CHICKEN

FAIRWAY DRIVE-IN

Home of the Basketburger

7 a.m. to 1 a.m. Weekdays
Saturday 'til 3 a.m.

Vince and Freda Farnum
South on Highway 93

WELCOME TO MSU

From the Home of
FREEMAN OXFORDS — CHAMP HATS
CLIPPER CRAFT CLOTHES
VAN HEUSEN SHIRTS

Dragstedt's
EVERYTHING MEN WEAR
ON CIRCLE SQUARE

Vote for Winfield Page,



Page introduced and was instrumental in passage of legislation in the 1951 session of the Legislature which enabled construction of the Fieldhouse. He was on hand (above) in July, 1954, when the first arches were erected.

The Congressional Candidate Who Gets Things Done!

PAGE got things done for the University while he was a member of the Legislature—

PAGE will get things done as a member of Congress!

Here is What Page Has Done for Montana State University

PAGE obtained the largest appropriation increase for the University in its history, while a member of the University subcommittee of the 1949 Legislature's appropriations committee.

PAGE successfully sponsored to enactment in 1947 the 6 mill levy for the greater University system. The increased financing resulting is now the backbone of the University's financial structure.

PAGE supported and promoted other bills before the Legislature during his five terms which were requested by University officials or designed to benefit the University system, for example, retirement of bonds on the strip houses, resulting in lower rental rates to veteran students.

If You Want an Effective, Working Congressman, Vote for WINFIELD PAGE, November 2nd!

(Political Advertisement Inserted and Paid for by Page-for-Congress Club, C. R. Spicher, Secretary, Box 1075, Missoula, Montana.)

Homecoming Brings Alums From Many States

Homecoming registration reached 195 late Thursday, according to Andy Cogswell, director of the public service division.

Several alumni arriving yesterday from California for weekend festivities include Dr. and Mrs. Robert Boden, Los Angeles; Mr. and Mrs. Jack R. Baker, San Francisco; Mr. and Mrs. James S. Weir and Elmore Nelson, of Melbrae.

A wire from Mr. and Mrs. Frank Brutto, Rome, Italy, sent regards to their 1929 class on its silver anniversary. Brutto, a journalism graduate, is head of the Associated Press bureau in Rome.

Nine alumni from Portland registered Thursday.

Organizer of the golden anniversary dinner, Mrs. Julius F. Derge, '04, traveled from Cranford, N. J. Forty alumni have registered for the dinner. Invitations were sent to members of the 1898-1911 classes.

Silver anniversary of the 1929 class will be noted at a dinner Friday night. Both dinners will be held in the faculty center at Jumbo hall at 8 p.m.

President and Mrs. Carl McFarland were first to register for Homecoming. Miss Dorothea Rector, '25, Great Falls, was the first out-of-towner to send in for a reservation.

Society . . .

(continued from page seven)
Missoula, and Mrs. Tyler Cooney, Butte.

Kappas will hold an Open House Saturday afternoon from 4:30 to 5:30 for all Homecoming visitors.

Phi Delta Theta

New actives initiated Sunday are Clayton Schultz, Dillon, and Pete Leveque, Vallejo, Calif.

Sigma Alpha Epsilon

Dinner guests Monday night were Sterling Thompson, Lanny Carman and Bill Todd, all of Billings.

South Hall

Dinner guests Sunday included Dr. and Mrs. L. H. Kotschevar; Dr. and Mrs. Heinz Arnold; Abe Wollock; and Dr. Earl Bennett.

Chaperones at the fall quarter function Oct. 9 were Prof. and Mrs. P. E. Bruns; Dean and Mrs. J. E. Orr; and Dean and Mrs. H. J. Wunderlich.

COME IN AND HAVE
YOUR HAIR CUT
AS YOU WANT IT
AND LIKE IT
Women's hair styled,
too.

**Florence
Barber Shop**

Greats Live Again

(Continued from page nine)
12-13 loss to the Silvertips in 1947. Jack O'Laughlin and Chick Murphy were big guns on the 1949 eleven that fell to Idaho, 19-47, in the big clash. Lefty Byrne showed flashes of the brilliance that would sweep him into the limelight in following seasons.

Tom Kingsford to Ray Bauer was the story of the 1950 squad, but both were out with injuries as the Silvertips dropped a 20-0 contest with Oregon State in the big game.

Lefty Byrne and tackle Gordon Jones did their utmost, but to no

avail as old rival Idaho won 12-9 in the 1951 struggle. Byrne led the nation in kickoff returns that year, Montana's first year in the Skyline conference.

7,000 Fans in '52

Seven thousand fans sighed in disappointment in 1952, despite the efforts of Dean Brott, as the Silvertips dropped a 28-7 battle with Brigham Young.

But of all the homecomings

with their thrills and disappointments, perhaps none has brought more satisfaction to the faithful than did last year's 32-31 win over Colorado A&M. "Twenty-six gallant Grizzlies" and 7,500 fans whooped and hollered as Murdo Campbell, Dick Heath and Dick Imer combined to hand MSU an early lead. But it took all 26 men to withstand Colorado's three-squad, last half assault.

FRIDAY-SATURDAY
"5,000 Fingers of Dr. T."
"The Sniper"

STARTING SUNDAY

MIGHTY!
A SURGING
SAGA OF SPIRIT!

"BRIGHAM YOUNG-Frontiersman"

LYNDA
POWER - DARNELL
DEAN JAGGER
JOHN
DOWLEY-CARRADINE-DARWELL-ASTOR

THE CAMPUS
South Higgins Sunday Matinee

Welcome Back Alums!

ROEMER'S Conoco Station

- Batteries & Accessories
- Lubrication
- Goodrich Tires
- Washing

130 E. Main Phone 9-9895

Ryan, Lambert Lead Vets Group

Approximately 125 vets met Wednesday night to consider setting up a veterans organization at MSU.

The vets, led by Jack Ryan, Monmouth, Ill., and Bill Lambert, Leavenworth, Kan., discussed a loan fund for veterans, aid in case of emergency, advisors for new veteran students, rehabilitation of new students, a voice in student government, and inducement of use of the G. I. bill.

A committee was organized to draw up a tentative set of laws for discussion at the next meeting, Monday, Oct. 18. Members are Arnold Woods, Libby; Dan Geary, Helmville; Bob Gilbert, Polson; Bob Cummins, Missoula; John Adamson, Billings; John Kennedy, Great Falls; John Nickoloff, Brockton; and Bill Lamb, Great Falls.

Faculty advisor is Forestry instructor, James L. Faurot.

COMO AND HOGAN

Perry Como, top TV and recording star, and Ben Hogan—only active golfer to win 4 national championships, enjoy a Chesterfield during a friendly round of golf.

WHAT A BUY — CHESTERFIELD King Size (at the New Low Price) and Regular

Like Ben and Perry you smoke for relaxation, comfort and satisfaction. In the whole wide world no cigarette satisfies like a Chesterfield.

You smoke with the greatest possible pleasure when your cigarette is Chesterfield—because only Chesterfield has the right combination of the world's best tobaccos—highest in quality—low in nicotine.

In short, Chesterfields are best to smoke and best for you.

LARGEST SELLING CIGARETTE IN AMERICA'S COLLEGES

'bout the Size of It

Montana Forum will feature Dr. R. J. Ely in a discussion of MSU's new scholastic fraternity, Phi Kappa Phi, at the regular meeting at noon today in the Copper room of the Student Union.

Welcome Alums TO Homecoming LOOK FOR STARR'S Conoco

To Look After Your Car
and Driving Needs



RALPH
STARR Jr.

Corner Van
Buren and
Broadway

PHONE
9-9973