

University of Montana

ScholarWorks at University of Montana

Montana Kaimin, 1898-present

Associated Students of the University of
Montana (ASUM)

1-19-1955

The Montana Kaimin, January 19, 1955

Associated Students of Montana State University

Follow this and additional works at: <https://scholarworks.umt.edu/studentnewspaper>

Let us know how access to this document benefits you.

Recommended Citation

Associated Students of Montana State University, "The Montana Kaimin, January 19, 1955" (1955).

Montana Kaimin, 1898-present. 3061.

<https://scholarworks.umt.edu/studentnewspaper/3061>

This Newspaper is brought to you for free and open access by the Associated Students of the University of Montana (ASUM) at ScholarWorks at University of Montana. It has been accepted for inclusion in Montana Kaimin, 1898-present by an authorized administrator of ScholarWorks at University of Montana. For more information, please contact scholarworks@mso.umt.edu.

Sigma Chi Selects 10 Candidates For Sweetheart

Twenty University coeds were chosen Monday night by the Sigma Chi active chapter as candidates for the 11th annual Sweetheart ball to be held Feb. 12, according to Bruce Crippen, Billings and Roland Grotte, Hamilton, co-chairmen for the dance.

Those representing the women's living groups are: Corbin Hall — Joan Griffin, Havre, and Nea deMers, Arlee; New hall — Darlene Lloyd, Lethbridge, Alberta and Eva Negu, Shelby; Delta Delta — Adrienne Mills, Kalpell and Peggy McIntosh, Butte; Alpha Alpha Theta — Thea Williams, Billings and Patsy Bender, Butte; Delta Gamma — Gretchen Huber, Helena and Dorothy Roberts, Great Falls.

Sigma Kappa — Deirdra Herzog, Butte and Barbara Simonfy, Lewistown; Kappa Kappa Gamma — Lynn McCaffery and Sandra Cooney, Butte; Alpha Phi — Norma Martin, Helena, and Mary Mae Feely, Needles, Calif.; Syna — Francis Shells, Topsham, Ore., and Elizabeth Normandeau, Conrad; and North hall — Barbara Mastlick, Molt, and Cleo Ceserani, Butte.

The candidates will be entertained six times at the house before the ball. The actives and judges will vote for five finalists, then the actives vote for the next sweetheart.

The present Sweetheart of Sigma Chi is Sallie Hollecker, Great Falls, Alpha Phi.

Whitefish Skiers To Plan Details At Meet Tonight

The Ski club meeting tonight at 8:30 in the lobby of the Student Union will be the last chance to sign up for the Whitefish ski weekend. Tickets for the trip will be handed out at the meeting.

Alan Morris, Missoula, publicity chairman for the Ski club said that everyone who is going for the weekend should come to the meeting where their transportation will be arranged. Those who offer their cars as transportation will receive \$1 per passenger carried.

Unpaid balances — on the Ski weekend price of \$19.75, must be paid by Thursday afternoon.

Girls planning on making the trip must have signed releases from their parents, according to Dave Penwell, Billings, Ski club president. The releases must be turned into the dean of women's office before departure.

Cook, Mosher Win Debate Trophy

Bruce Cook and Don Mosher, Butte, who won five out of six debates, were awarded the first place trophy in the annual Inland Empire Junior College debate tour at the University of Idaho, Jan. 14-15.

The tourney, which is held for junior college students and freshmen and sophomores from four-year institutions, was attended by debate teams from five schools. Also making the trip from MSU were Tom Haney, Butte, and Jerry Weissman, Great Falls.

The debaters were accompanied by Don Schroeder, Sandpoint, Idaho, who acted as a judge during the tournament.

Bozeman Head To Lecture About Water

Dr. Nicholas Helburn, head of the department of geography and geology at Montana State college, Bozeman, will lecture on "Water and Watersheds in a Part of the



DR. NICHOLAS HELBURN

Middle East," Friday at 7 p.m. in F106, according to Ross Williams, dean of the School of Forestry.

He will also lecture to a class in watershed management in the same room at 8 a.m., Dean Williams said.

Dr. Helburn is active in conservation circles in Montana and teaches conservation education at the State college. In 1952, he received a fellowship from the Ford Foundation Board of Overseas Training and Research to study land use and agricultural geography of the semi-arid regions of Turkey.

Because of his work in the conservation of natural resources in the Great Plains and Rocky Mountains, the talk will have special application to Montana's land and water problems, said Dean Williams.

Fiedler Will Open Talks on Whitman

Dr. Leslie Fiedler, chairman of the MSU English department, will go to Stanford University Thursday where he will open the National Library of Congress' centenary of Walt Whitman's "Leaves of Grass."

Dr. Fiedler recently had one of his essays published in a book, "Leaves of Grass One Hundred Years After," published by the Stanford University press. He was the only essayist from the western United States represented in the book.

Cadets Receive Ribbons For Academic Standing

Ribbons for highest military academic standing in first year basic air ROTC were presented to Cadet Don Nelson, Livingston, first place; Cadet Olav Vik, Plentywood, second place; and Cadet Albert Thibodeau, Milltown, third place.

For second year basic air ROTC the following ribbons were presented: Cadet James Rowland, Billings, first place; Cadet Charles Fox, Hardin, second place; and Cadet Kenneth Sutherland, Missoula, third place.

PE Ice Classes Scheduled Today

Skating classes for both men and women start today, it was announced by Charles F. Hertler of the physical education department. Open skating sessions however, will be delayed until the walks and warming house have been finished.

Except for once or twice when it was tested, the ice will be used today for the first time at 2 p.m., when the men's skating class comes on. It will be followed at 3 p.m. by the first women's class.

This is the schedule for the first skating classes to be held at MSU:

Women: Tuesdays and Thursdays at 11 a.m. and 1 p.m.; Mondays and Wednesdays at 3 p.m.

Men: Mondays, Wednesdays, and Fridays at 2 p.m.; Tuesdays, Thursdays, and Fridays at 3 p.m.

Tickets for open skating, which are selling at the Field House ticket office, will entitle MSU students to ten sessions, instead of eight as previously announced.

Feb. 1 Last Day For Women Grads \$500 Scholarship

Feb. 1 will be the deadline for graduate women students to make applications for the Kappa Kappa Gamma student aid fellowships which total \$500 annually.

These awards are open to members of this fraternity, members of other women's fraternities and non-fraternity women who are citizens of the United States or Canada, and who have received a Bachelor's degree or will obtain one prior to July 1st of the year in which the awards are made.

The degree must be from an institution where a chapter of Kappa Kappa Gamma is located or graduate work done on a campus where a chapter is located. Awards are made entirely on a competitive basis without regard to fraternity affiliation.

The requirements for these awards are that a candidate must have a high scholastic standing, not be more than 30 years old and be outstanding in some form of activity.

Brine to Keep Rink Frozen On Hot Days

Did you know that MSU's new ice rink will stay in good condition in summer temperatures coming close to 90 degrees above?

This and other facts on the expected performance of the ice sheet were obtained in an interview with W. E. Harper, representative of the Creamery Package manufacturing company.

One thousand gallons of cold brine are driven into the pipes which lie under the ice and are then returned to the machine shed within one minute. During this trip, the brine will gain only two degrees temperature.

The machinery will operate almost entirely automatically. Thermostats, by measuring the temperature of the brine, will turn the compressors on or off.

The highest and lowest temperatures ever recorded in Missoula were used as guides to determine the composition of the brine.

During the summer, one-half of the present ice surface will be kept frozen. Depending on the humidity the ice will stay frozen up to temperatures near 90 above.

Today's Meetings

Pi Mu Epsilon, 7:30 p.m., Math-Physics 109.

Canterbury club, 7 p.m., LA 103.

Forestry club, 7:30, F 106.

ROTC Sponsor corps meets in the basement of the Liberal Arts building to drill.

Sports chairmen, Thursday, 3 p.m., intramural office.

Ski club, 7:30 p.m., SU lobby.

Ballet Tickets Go on Sale; Program Includes 4 Dances

Three classic and one modern ballet will be danced in the Ballet Russe de Monte Carlo as part of the Community concert series in the Field House Monday, according to Robert Breen, Field House manager.

Staging and curtains will go into the Field House this week. Bear Paws will sell tickets in the Student Union tomorrow.

The program consists of Tschalkovsky's "Swan Lake" choreographed by Coppelia; Strauss' "Le Beau Danube" choreographed by Massine; Gounod's "Walpurgis Night" choreographed by Ruthanna Boris as "Cirque de Deux"; and Antonia Cobo's "Mikado", adapted from the Gilbert and Sullivan operetta.

Show Larger Than Average
Thirty sets of ropes will go into the Field House to handle cur-

Political Science Interne Program Newly Announced

The American Political Science association announces their annual Congressional Interne program in Washington, D.C., according to a recent release.

The nine month program includes one month in the Library of Congress studying congressional organization; four months as an active, working staff member in the office of a senate or house member; and four months as an active, working staff member with a congressional committee.

The salary will be approximately \$4,000.

Applications must be submitted through your departmental chairman, dean, or employer prior to Feb. 1. Awards will be announced in April.

Application forms for this program may be picked up at the Kaimin office. For further information write the American Political Science association, 1785 Massachusetts Ave, N.W., Washington, D.C.

Colorado Coach Likes MSU Fans

"It was a real pleasure to play at Montana," Jim Williams, Colorado A & M basketball coach said, when he returned to Fort Collins. He said it was "about the nicest crowd to play before I've ever seen."

Williams was talking of the 6,600-plus fans that packed the Field House for the first sell-out crowd.

"Even though we were defeating their team, the crowd was most courteous all the time," said Williams. "They applauded the good performances instead of looking for poor ones to boo. Then after the game a great many fans came to us to congratulate us on our game."

AAUW Loan Available For Women Students

Any woman student in need of funds to finance her college work may secure a loan from the American Association of University Women, according to Mrs. Gordon Castle, loan fund chairman.

Amounts up to \$100 may be borrowed, upon approval by the Dean of Students' office and the loan fund chairman, without interest during the college period.

An interest of 2 per cent will be charged from the date of graduation until the loan is repaid.

KAIMIN CORRECTS HONOR ROLL: 3 STUDENTS ADDED

Three persons were omitted from the list of 26 straight A students published in yesterday's Kaimin. They are: Rae Buckingham, Terry; Kenneth Card, Missoula, and Catherine Tzoukanatou, Athens, Greece.

The total number of straight A students is now 29.

tains and scenery the latter part of this week. This is a larger number than the average show, according to Abe Wollock, drama instructor, and means the show has quite elaborate possibilities.

Bear Paws will sell tickets to students Thursday, according to Russell Pfohl, Deer Lodge. The tickets will be good for both the Ballet Russe de Monte Carlo and the Hazel Scott concert which appears later. The price is \$2.

Prima Ballerina Injured
Ballet Russe de Monte Carlo is directed by Sergei J. Denham. Prima ballerina of the show, Maria Tallchief, will not appear because of a knee she sprained in Chicago recently.

Heading the ballet cast will be Frederic Franklin, Nina Novak, Leon Danielian, Gertrude Tyven, Yvonne Chouteau, Irina Borowska, Victor Moreno, and Alan Howard. The full orchestra will be directed by Ivan Boutnikoff.

Off the U.P. Wire... China Reds Grab Nationalist Island

Chinese Communist invaders captured a Nationalist island off the China mainland — Yikiangshan. Secretary of State John Dulles reports the island is not vital to the defense of Formosa. In fact, the American Seventh fleet ignored the whole operation yesterday when the Reds swarmed ashore after a terrific bombardment from the air, sea, and nearby islands the Communists hold.

The State School Fund... is \$30,160 richer after Montana's first oil and gas leasing sale since December of 1952. The sale was held in Helena yesterday.

Montana State University... is slated to draw an appropriation of \$3,755,838 over the biennium in the proposed budget that Montana's legislators were presented with yesterday by the state controller.

Beards and Belles



Top—Judges Tom Davis and Howard Tottingham, Missoula businessmen, inspect the beard of Carl Jones, Long Beach, Calif., as Gunner Guardipee, Browning (right of Jones), looks on.

Middle—The bearded contestants gather around the judges for instructions.

Bottom—Left to right: Luanna Page, Camas; Charles Rouse, Lakeview, Ore., and Sandra Swanson, Missoula; Dick Johnson, Chicago, Ill., members of the Royaleers, performing during the Foresters' ball Saturday.



Drivers' Dilemma

The pictures above illustrate a serious situation that exists on campus. Too many cars are cramming into areas where they shouldn't be. With cars on both sides of the oval (top picture) there is hardly enough room for one car to travel safely.

The present icy roads add to a dangerous condition that already exists because of people walking across the road from between cars, cars pulling into the middle lane from both sides, and poor vision because of the parked cars and the circular path of travel.

Cars are often packed into the North Corbin, and New hall lot (middle picture) at so many different angles, it's like fitting a piece in a jigsaw puzzle to get your car into a parking spot. Then when you try to leave you discover that about four other pieces of the puzzle have been fitted neatly around you.

A similar situation exists in the Journalism, Forestry, and ROTC area (bottom picture).

Obviously there are too many automobiles trying to get near the same buildings at the same time. It's also rather obvious that there isn't enough room for so many cars in these areas. The fault doesn't lie with you anymore than the other fellow, but there is definitely a fault and it must be eliminated.

Some restrictions should be imposed and enforced on the number of cars allowed to park in an area and the order in which they park. It appears that there is no active faculty or student traffic committee this year when it is

most needed. If not, one should be established.

Steps should be taken now to alleviate the situation or it will eventually come to a climax and everyone will be walking to the campus from peripheral areas.

—B.N.

'Go You, Find Out the Forester,' So Sayeth the Bards of the Ball

By TOM MCCARTHY

The following comments were made by Shakespeare students who attended the Foresters' ball over the weekend.

"Go one of you, find out the forester..." Midsummer Night's Dream, A.V, S.i.

"Through the forest have I gone, but Athenian found I none..." Midsummer Night's Dream, A.ii, S.ii.

"Peace you dull fool! I found them on a tree." As You Like It, A. iii, S.ii.

"Is the fool sick?" Love's Labor's Lost, Aii, S.i.

"Hark, what fine change is in the music." Two Gentlemen From Verona, A. iv, s. iii.

"I will discharge it in either your straw-coloured beard, your orange-tawny beard, your purple-

in-grain beard, or your French-crown-colour beard, your perfect yellow." Midsummer Night's Dream, A.ii, S. ii.

"Did I not dance with you in Brabant once?" Love's Labor's Lost, A.ii, S. i.

"Come, sing me a bawdy song; make me merry." King Henry IV, Part I, A.iii, S.iii.

"But doth he know that I am in this forest..." As You Like It, A. iii, s. ii.

"O, had I but followed the arts." Twelfth Night, A. i, S. iv.

Principal Dancer Began Work at 6

Frederic Franklin, premier danseur of the Ballet Russe de Monte Carlo, will be seen in most of the principal roles when the company appears here Monday.

Franklin was born in Liverpool and acted in traditional British pantomimes when he was six years old. Later he moved into Paris vaudeville and London musical comedies.

During the past two years, Franklin danced a ballet version of Tennessee William's "Streetcar Named Desire," as Stanley Kowalski. Recently, he created the role of Katisha in Antonia Cobo's new ballet "Mikado," which appears on the Community concert program.

Broadcasting Academy Offers Scholarship

The National Academy of Broadcasting in Washington, D.C., is offering a valuable scholarship to college and university trained students wishing to prepare for a career in broadcasting.

The scholarship, worth \$300, pays for one semester's tuition.

Applications should be made to the National Academy of Broadcasting, 3338 - 16th St., NW., Washington 10, D.C.

The Montana KAIMIN

Established 1898

Published every Tuesday, Wednesday, Thursday, and Friday of the college year by the Associated Students of Montana State University. Represented for national advertising by National Advertising Service, New York, Chicago, Boston, Los Angeles, San Francisco. Entered as second-class matter at Missoula, Montana, under Act of Congress, March 3, 1879. Subscription rate \$3.00 per year.

Classified Ads . . .

CALL Dave Boots for radio and repairs, antenna installation. Free pick-up. Phone 9-2884, 5-9 p.m.

FURNISHED apartments for rent: one knotty pine basement for one two men; three-room, large kitchen upstairs for married couple. Blaine, phone 9-7609.

FOR SALE: Davenport and chair, Phonograph cabinet \$5; Rug, \$3. Call 3-3791.

MONTANA'S OLDEST BANK

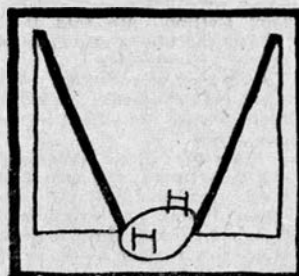
FIRST NATIONAL BANK

MISSOULA'S INDEPENDENT BANK

MORE LUCKY DROODLES! MORE LAUGHS!



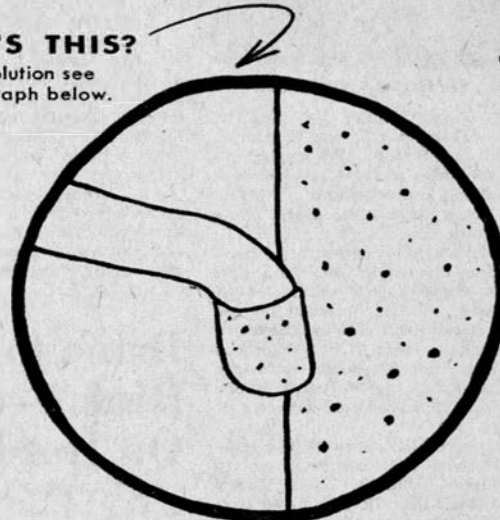
FIGURE EIGHT SKATED ON THIN ICE
Charles McGaha
Eastern New Mexico University



FOOTBALL STADIUM WITH ALL SEATS ON 50-YARD LINE
Herbert V. Wilkins
University of Alabama

WHAT'S THIS?

For solution see paragraph below.



THEY'RE CLAMORING FOR THEM! Who? Students. What? Luckies. Coast to coast, dormitory to dormitory, college smokers prefer Luckies to all other brands, according to the greatest up-to-date college survey. Again, the No. 1 reason for Luckies' wide lead: Luckies taste better. They taste better, first of all, because Lucky Strike means fine tobacco. Then, that tobacco is *toasted* to taste better. "It's Toasted"—the famous Lucky Strike process—tones up Luckies' mild, good-tasting tobacco to make it taste even better. So enjoy the better-tasting cigarette . . . Lucky Strike. But don't be like the man in the Droodle above, titled: Pickpocket acquiring Luckies. Make sure you have plenty of your own. Buy Luckies by the carton.



KEEP ALERT FOR A BETTER POINT AVERAGE!

Don't let that "drowsy feeling" cramp your style in class . . . or when you're "hitting the books". Take a NoDoz Awakener! In a few minutes, you'll be your normal best . . . wide awake . . . alert! Your doctor will tell you—NoDoz Awakeners are safe as coffee. Keep a pack handy!

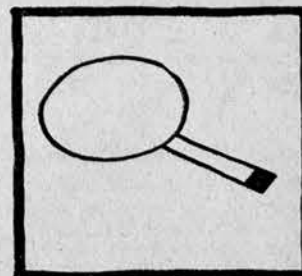
15 TABLETS, 35c



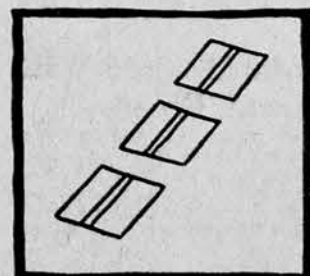
STUDENTS! EARN \$25!

Lucky Droodles* are pouring in! Where are yours? We pay \$25 for all we use, and for many we don't use. So send every original Droodle in your noodle, with its descriptive title, to Lucky Droodle, P. O. Box 67, New York 46, N. Y.

*DROODLES, Copyright 1953 by Roger Price



COWARDLY TENNIS RACQUET (NO GUTS)
Barbara Sprung
Brooklyn College



HIGHWAY FOR GRASSHOPPERS
B. D. Toepfer
University of Oregon

Better taste Luckies...

LUCKIES TASTE BETTER

CLEANER, FRESHER, SMOOTHER!

©A.T.Co. PRODUCT OF The American Tobacco Company AMERICA'S LEADING MANUFACTURER OF CIGARETTES

silver Tips

By KEN BYERLY

rt Bunte, spectacular Utah
ard, set a new single game
line scoring record last Friday
his 43 point outburst against
h State. Formerly of Colorado
and now a junior, the 6'3" Red-
erased the old standard of 39
ed by Glen Smith of Utah and
e Boryla of Denver.

he Grizzlies spent a stimulat-
weekend at the free throw
pouring in 44 of 60 gift tosses
a high of 73.3 per cent. Adams,
a seven for eight, Argenbright,
12 of 14, and Rhoades, with
of 13, showed the way.

erschel Pedersen, 6'6" Brig-
Young post man, who gunned
points against the Grizzlies
lay, spent three years as a
mon missionary after a tour in
armed service.

udolph "Zip" Rhoades, Silver-
cager, netted 104 points in
games at the state tourna-
at as Kalispell's leading scorer
1953. His record still stands.

iny Terry Tebbs, diminutive
gham Young guard, more than
bled his last year's point out-
in his first three conference
es this year. The 5'8" junior
ted 81 points in those three
es compared with 33 for the
ire season last year.

ohn Mooney, Salt Lake Tribune
ts editor, passes along this in-
ation on Nick Mateljan, sus-
ded last week from Brigham
ing. The 6'4" Cougar senior
ter released a list of four
rges which, he admitted,
sed his dismissal:

Mateljan received numerous
pus traffic violation tickets
r the years, but he said he had
d up the fines at registration
each quarter.

He was caught cheating in an
mination and called before the
pus honor council.

He picked up someone else's
ok and sold it, for which he was
ced on disciplinary probation
rch 22, 1954.

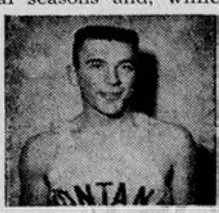
He received a traffic citation
December for parking in a no-
king zone, where a citation

Tough League
Says Dahlberg;
Howard High

By BILL LARCOMBE

"I think the team is doing as
well as can be expected in the
tough Skyline conference," com-
mented Coach George "Jiggs"
Dahlberg on the Grizzlies' per-
formances against four Skyline
foes so far this season.

The Silvertip monitor observed
that the entire conference has
greatly improved over the past
several seasons and, while Mon-



ARGENBRIGHT

tana has improved, so have the
other teams in about the same de-
gree.

Dahlberg does not infer that the
Grizzlies won't finish above last
season's last place standing; he
feels that Montana will play many
good basketball games during the
rest of the season. However, be-
cause of youth and inexperience,
the Silvertips may lack the con-
sistency of clubs like Utah, Wyom-
ing, BYU and Colorado A&M.

In 12 games this season the
Grizzlies have attempted 935 field
goals, connecting on 290 for a
percentage of 31.0, while their
opponents have made 318 of 824
attempts from the field for a per-
centage of 38.6.

Judging on past performances
by players, the Montana squad
may find the going easier as the
season progresses. For example,
Eddie Argenbright has a field
goal percentage of 24.4 at the pre-
sent time. For about the same
number of games last season his

issued to another student had been
placed on his windshield.

With their Mutt and Jeff com-
bination of Herschel Pedersen and
Terry Tebbs, Cougar hoopsters
probably won't miss Nick anyway.

mark was 28.0. However, after
the Grizzlies had completed 20
games, Eddie's percentage hit
32.0. His entire season percentage
was 33.2, while his conference
percentage was 32.1 at the close
of the campaign.

Ray Howard continues to lead
the Silvertips in point production
with a season's mark of 214 points.
Howard has hit 39.4 of his shots
from the field and 55.4 per cent
of his free throws.

Total Silvertip scoring:

	FG	FT	TP	Ave.
Howard	84	46	214	17.8
Rhoades	63	33	159	13.3
Argenbright	51	50	152	12.7
Bergquist	30	12	72	6.0
Adams	20	23	63	5.7
Dunham	17	8	42	3.5
Winterholler	9	20	38	3.5
Fine	10	12	32	3.2
Others	6	7	19	

CONFERENCE

	W	L	Pct.	Pts.	Op.
Utah	4	0	1.000	330	230
Wyoming	3	1	.750	240	217
Colorado A&M	3	1	.750	286	259
Brigham Young	3	1	.750	332	268
Utah State	2	2	.500	262	276
Montana	1	3	.250	236	300
New Mexico	0	4	.000	236	314
Denver	0	4	.000	240	298

ALL GAMES

	W	L	Pct.	Pts.	Op.
Utah	11	2	.846	1025	769
Wyoming	9	4	.692	832	804
Colorado A&M	9	4	.692	878	840
Utah State	7	5	.583	860	843
Brigham Young	7	7	.500	1009	995
Montana	6	6	.500	791	872
New Mexico	5	7	.417	865	900
Denver	5	8	.385	898	957

Sheriff's 58 Points
Top Cub Scoring

By DALE BURK

Six-foot five-inch Russell Sher-
riff is currently leading the fresh-
man basketball squad in scoring,
with 22 field goals and 14 free
throws for a total of 58 points.
Wayne Davies, a guard, follows
with 40 points.

In games and scrimmages so
far this season the Cubs have out-
scored their opponents 265 to 259,
but trail in percentages, hitting
33.6 per cent to 34.9 per cent. At
the free throw lane the freshmen
have hit 53.7 per cent of their
attempts while their opponents
have tallied 58 per cent of their
tries.

Player	FG	FT	PF	TP
Sheriff, c	22	14	7	58
Davies, g	16	8	10	40
Hathaway, f	18	1	8	37
Rhinehart, f	14	3	9	31
Erickson, g	12	2	6	26
Sullivan, g	9	2	3	20
Aubrey, f	9	2	2	20
Langhi, f	6	1	6	13
Kampschror, f	4	0	3	8
Paladichuk, g	1	2	3	4
Peklewsky, f	1	0	1	2
McGivney, g	1	0	5	2
Hirst, c	1	0	0	2
Schulz, f	1	0	1	2

Skirts 'n Sports

The women's basketball round-
robin got underway last week
with Sigma Kappa, Delta Delta
Delta, Corbin hall, and Independ-
ents posting wins.

The Sigma Kappas staved off a
last quarter New hall rally, win-
ning 30-29. Kay Calvin was the
big gun in the New hall lineup,
as she tallied 17 points to lead
all scorers. Marilyn Jarland paced
the winners with 11, followed by
teammate Darlene Spek with 10.

Kay Tyler, with an impressive
28-point scoring spree, led the
Tri Deltas to a 44-38 victory over
the Thetas. Norma Beatty and
Jane Law, with 15 and 14 points
respectively, were high scorers for
the losers. The Corbin hall cagers
had no trouble subduing the Alpa
Phis as they led all the way to a
30-17 victory. Shirley Thomas,
AP, took high point honors with
15 while Karen Anderson paced
the winners with 10 points.

The undermanned Independ-
ents, playing with six girls,
soundly trounced the North hall
freshmen, 29-16, in the final con-
test of the week. Helen Schroder
led the winners with 14 points
while Helen Harlan was high for
the North hall crew with eight.

For Fast Service

It's
CITY
CLEANERS

In Plant By Noon

Ready at 4

or Delivered by 6

610-12 SOUTH HIGGINS

Phone 6-6614

Always . . .

Go to

Delaneys

Bureau of Printing

for the best in

STUDENT

PRINTING

Palace Hotel Building

Phone 9-4113

LET US
CHECK
OVER

YOUR
AUTO
ELECTRICAL
SYSTEM

For Better Starting
This Winter

AUTO ELECTRIC
SERVICE

218 E. Main

Phone 4-4716

Ballet at its finest

Ballet Russe de Monte Carlo, most famous ballet in the country, will
be at the Field House Monday night. Featured dancers are Frederic
Franklin and Irina Borowska. Franklin has just completed a tour with
the ballet version of "A Streetcar Named Desire."

The program includes Tschaiakovsky's "Swan Lake," Strauss' "Le Bleu
Danube," Gounod's "Walpurgis Night," and an adaption of Gilbert and
Sullivan's "Mikado."

Tickets for \$2, available at the Student Union, include the Hazel Scott
piano concert to be given in the spring.



Ballet Russe
de Monte Carlo

Monday, Jan. 24 at 8 p.m.

Field House

HERBERT TAREYTON
CIGARETTES
Filter Tip
MODERN SIZE
FILTER TIP TAREYTON
Gives You The True Tobacco Taste
You've Been Missing!
PRODUCT OF The American Tobacco Company

Science Jobs Open In Civil Service

Student trainee examinations for positions paying \$2,500 to \$3,175 a year in the fields of physics, metallurgy, chemistry, cartography, and engineering have been announced by the United States Civil Service commission.

The jobs are located in various federal agencies in Washington, D.C. and vicinity.

Further information and application forms may be obtained at the Missoula post office, or from the United States Civil Service commission, Washington 25, D.C. Applications will be accepted by the commission in Washington until May 1, 1955.

Sullivan Will Address Cascade Bar Association

"The Status of Legal Education in the Law School at Montana State University" will be the subject of a talk by Robert E. Sullivan, assistant dean of the MSU Law School.

He will speak at the annual luncheon of the Cascade County Bar association in Great Falls on Thursday, Jan. 20.

Following the luncheon there

will be a three hour discussion of oil and gas problems in regard to Montana cases.

Sullivan is a member of the Montana, North Dakota, and Ohio State Bar Associations. He is a specialist in gas and oil law, and has written a handbook on it which is scheduled for publication May 15 by Prentice-Hall.

'bout the Size of

Two national scholarships senior college women are being offered by the Katharine Gibbs school of New York the secretarial school announces. Each college or university recommend one candidate. Interested students may obtain information from the Kaimin of

WHAT DID IT COST TO CREATE YOUR JOB?

If you're an average U.S. factory worker—\$12,000.

If you're a rough carpenter, it took approximately \$350 worth of tools to set you up in your trade.

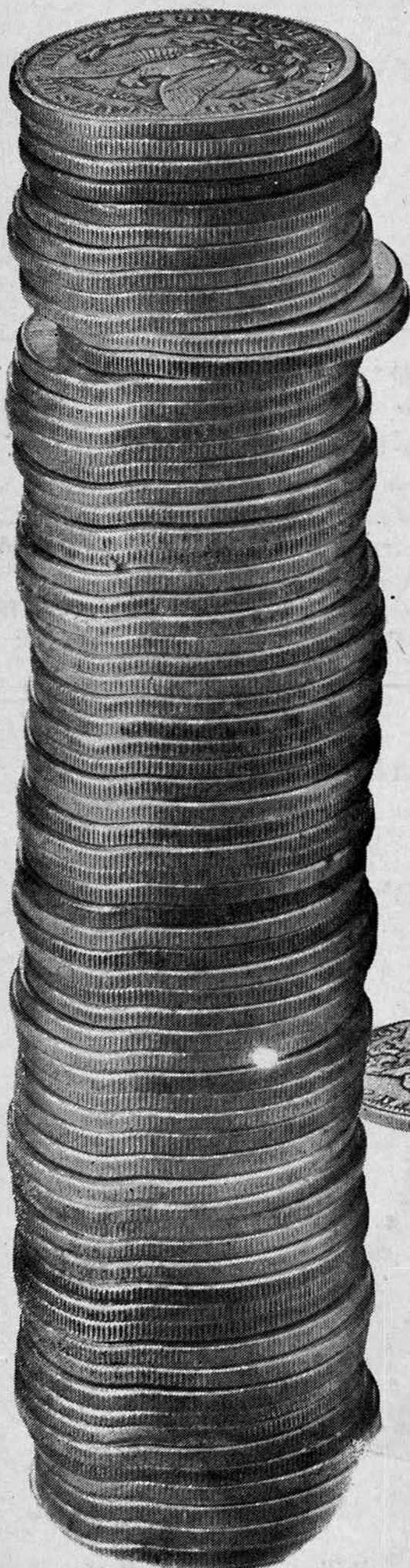
Tools for a garage mechanic cost about \$3,000; for a Washington wheat farmer \$12,500; for a secretary \$300.

But if you work for Union Oil, it took \$77,000 worth of tools in the form of trucks, service stations, refineries, oil wells, etc., to create your job.* Obviously, some of our jobs require considerably less investment than \$77,000 and some considerably more. But this is the average for Union's more than 9,000 employees.

That's big money. But it accomplishes big things.

It brings Union's customers better products at lower costs. It enables each employee to produce more and therefore earn more. It creates better jobs and a higher standard of living.

**Even this figure does not include the "tools" Union rents for its employees, such as office space, tankers, telephone service, etc.*



UNION OIL 76 COMPANY
OF CALIFORNIA

This is one of a series by the people of Union Oil to explain how business functions. Your comments are invited. Write The President, Union Oil Company, Union Oil Bldg., Los Angeles 17, California.