

University of Montana

## ScholarWorks at University of Montana

---

Montana Kaimin, 1898-present

Associated Students of the University of  
Montana (ASUM)

---

5-6-1955

### The Montana Kaimin, May 6, 1955

Associated Students of Montana State University

Follow this and additional works at: <https://scholarworks.umt.edu/studentnewspaper>

**Let us know how access to this document benefits you.**

---

#### Recommended Citation

Associated Students of Montana State University, "The Montana Kaimin, May 6, 1955" (1955). *Montana Kaimin, 1898-present*. 3114.

<https://scholarworks.umt.edu/studentnewspaper/3114>

This Newspaper is brought to you for free and open access by the Associated Students of the University of Montana (ASUM) at ScholarWorks at University of Montana. It has been accepted for inclusion in Montana Kaimin, 1898-present by an authorized administrator of ScholarWorks at University of Montana. For more information, please contact [scholarworks@mso.umt.edu](mailto:scholarworks@mso.umt.edu).

## B Passes \$67,500 Budget, Kaimin Given \$1,350 More

By BILL THOMPSON  
 The ASMSU budget of \$67,500 was unanimously approved last night by out-going Central board. It was the last important action of the retiring student government. After the motion, the 1955-56 board of officers was installed. The budget, based on an estimated student body numbering 10,000 for next year, was prepared by the Budget and Finance committee, headed by Joan Bachman, Missoula. It was first heard before Central board last Thursday, when all the minor budgets, with the exception of the Kaimin's, were tentatively approved. The revised budget presented yesterday, the Kaimin's allocation was raised to 8.3 per cent from 6.3 per cent of the total. This is an increase of \$50, from \$4,252 to \$5,602. The Kaimin was granted an increase because at present, it must fill over 100 of its space with advertising to avoid losing money. The only other change from last year's tentative budget was in the allocation to the Sentinel. This was increased from 14.4 per cent to 12.4 per cent, which gives the Sentinel 70 per cent of the total. Besides the Kaimin and Sentinel

budgets, there are only four other changes from the 1954-55 allocations. Athletics was raised from 48 to 50 per cent. Reduced were the budgets of: accounting, from 6.5 to 4.5 per cent; general fund, from 7 to 5.6 per cent; and Outside Entertainment, from 1.8 to 0.8 per cent. Following is a list of ASMSU allocations to other campus organizations and activities: Associated Women Students, 1.3 per cent or \$877.50; ASMSU Student Loan Fund, 0.5 per cent or \$337.50; Band, 2.2 per cent or \$1,485; Band Instrument and Equipment Fund, 1.4 per cent or \$945; Debate and Oratory, 2.8 per cent or \$1,890; Dramatics, 3.5 per cent or \$2,362.50; Women's Intercollegiate sports, 0.5 per cent or \$337.50; Men's Intramural sports, 2.0 per cent or \$1,350; Publicity and Travel, 1.4 per cent or \$945; Venture magazine, 1.3 per cent or \$877.50; Women's Recreation Association, 1.5 per cent or \$1,012.50. The ASMSU fund is created from the \$10 activities fee paid by every student at the beginning of each quarter. The budget is figured on the total amount collected over the three regular school quarters.

## Two Nights of Shakespeare; Tickets on Sale at Theater

Tickets for the Montana Master's presentation, tonight and tomorrow night, of Shakespeare's "The Shrew," go on sale this morning at 9 o'clock in the ticket office of the University theater. The ticket price is 25 cents plus a spring quarter activity fee. The box office will be open today and Saturday until 5 p.m. One of Shakespeare's most popular comedies, "The Shrew" stars Marjorie Lovberg, Missoula, and Ron DeJarnett, Billings. The 30-member traveling company recently returned from a 10-week tour of the state. Musical dance routines, directed by Marjorie Cooper, fine arts instructor, have been added to the Shakespearean production. "The Taming of the Shrew" is one of Shakespeare's earlier comedies and was originally adapted from the poem, "A Merry Jest of the Shrewd and Cursed Wife," written in 1575. The plot centers around Katherine (Kate) played by Marjorie Lovberg who is vivacious and strong minded, not letting any one push her around. This would be all right except for the fact that Kate is also the eldest of 10 daughters and before the younger Bianca, Rhea Sherburne, can marry, Kate must. Bianca has many suitors, but Kate doesn't attract any eligible young men until Petruchio, Theron DeJarnett, comes on the scene as a healthy young man looking for a wife. The fact that the father of the 10 girls favors Bianca and all her suitors only adds to making more of a shrew out of the all-ready reformed Kate. Apparently Kate is tamed as the play ends, but the audience can never quite be sure. LeRoy Hinze, assistant professor of drama, directs the production.

Aiding him are Ray Halubka, Great Falls, carpenter; Jeanene Schilling, Missoula, costume mistress, and Jerry Walford, Missoula, electrician.

Other members of the cast include: Al Esta, Seattle; Bruce Cusker, Missoula; Doug Giebel, Big Sandy; Harold Hansen, Rexford; John Howell, Bozeman; Whitney Hines, Billings; Ray Halubka, Great Falls; Russ Pfohl, Deer Lodge; Gordon Rognlien, Kalispell; Silver Chord, Seeley Lake; Ray Stewart, Stanley, N. D.; Henry Meier, Spearfish, S. D.; and Hidde Van Ameyden, Van Duym, The Hague, Holland.

## 'The Taming of the Shrew' Makes Last Stop of State Tour . . .



Theater-goers will also see Bianca, the shrew's younger and more attractive sister, played by Rhea Sherburne, Scobey, and Lucentia, one of her many suitors, played by Harold Hansen, Rexford. Bruce Cusker, Missoula (above), who plays Grumio in "The Taming of the Shrew," will appear before MSU audiences tonight at 8:15 p.m. in the University theater.

## Music Festival Judging Begins For Small Groups

Judging of solos and small ensembles of the state music festival begins this morning and will continue through today and tomorrow in the Music building and the Arts and Crafts building.

The schedule for today is: brass solos, 10 a.m. to noon and 1 to 3 p.m., Arts and Crafts building; brass ensembles, 8 to 10 a.m., M 218; piano solos, 9 a.m. to noon and 2:40 p.m. to 4 p.m., music school recital hall; piano ensembles, 2 to 2:40 p.m., recital hall; strings, 11:30 a.m. to noon, M 204 and 1:30 to 2 p.m., recital hall; vocal solos, 9 a.m. to noon and 1:30 to 4 p.m., M 104 and 105; vocal ensembles, 11:30 a.m. to noon and 1 to 4 p.m., M 218; woodwind solos, 9 to 11:30 a.m. and 1 to 3 p.m., M 204; woodwind ensembles, 8 to 10 a.m., Arts and Crafts building.

Tomorrow's judging schedule is: brass solos, 8 a.m. to noon and 1 to 4 p.m., Arts and Crafts building; brass ensembles, 2 to 3:15 p.m., M 218; percussion, 11:30 a.m. to noon and 1 to 2 p.m., M 218; piano solos, 8 to 9 a.m., 10 a.m. to noon, and 2 to 4 p.m., recital hall; strings, 11:30 a.m. to noon, M 204 and 1:30 to 2 p.m., recital hall; vocal solos, 9 a.m. to noon and 1:30 to 4 p.m., M 104 and 105; vocal ensembles, 8:30 to 11:30 a.m., M 218; woodwind solos, 8 to 11:30 a.m. and 2 to 3:30 p.m., M 204; woodwind ensembles, 8:30 to 10 a.m. and 1 to 4 p.m., Instrumental lab, room 1; piano ensembles, 9 to 10 a.m., recital hall.

Registration is at the front entrance of the music building from 8 a.m. to noon and 1 to 5 p.m. both days.

## 'bout the Size of It

University twirlers are asked to meet in the Women's Center at 4 p.m. Monday, according to Betty Fauror, twirler advisor.

The Wesley Foundation is sponsoring a field trip and picnic to St. Ignatius this Sunday. The outing is open to the public and the group will leave at 5:30 p.m. from the Lodge. Transportation will be provided for the girls.

Lutheran Students association will have two guest speakers at their meeting this Sunday in Conference Room 1 at the Lodge. The meeting is set for 5:30 p.m. and the topic of the speeches will be "When Uncle Sam Calls."

Racial tension between whites and natives of South Africa will be the subject of a wire recorded speech by George Hauser to be played at a meeting of the SCA Effective Citizenship committee Monday at 9 p.m. The committee will meet in the South hall lounge.

Vera Stucky, Gallatin Gateway, a student at Montana State college, has been awarded a Fulbright educational exchange award to study at the Eberhard Karls university in Tubingen, Germany.

## Old C-B Passes Big Four To Newly-Elected Officers

By KIM FORMAN

Last year's Central board is gone and a new has taken its place. The 1954-55 board yesterday handed the 1955-56 board both the gavel and four yet unsolved problems that have plagued student government for the past year.

These "big four" are the honor system, the student store, the budget, and problems involving the Lodge. The tennis courts, and streets adjacent to the University also were handed to the new board as problems worthy of consideration in the coming year.

Pat O'Hare, Stevensville, chairman of the current honor system committee and ASMSU vice-president, spelled out the achievements her committee has made in the past year. She said many people felt the committee had done nothing but that they had won recognition by the faculty and administration—a definite, forward step.

"We haven't put anything into effect," Miss O'Hare said, "but we have at least gotten on an equal

footing and are no longer working at odds." The committee next year will function as a regular student-faculty committee with Prof. Albert W. Stone of the law school as chairman. Miss O'Hare moved that a student be selected as student chairman and that one member of Central board sit on the committee. The motion was approved.

Pat Eyer, Billings, senior delegate and former chairman of the honor committee, speaking to the new board, said "I don't think you know a lot about an honor system . . . you should make a point to find out all you can about it." He emphasized that, "There is no honor system in the country that is a faculty or administration honor system . . . it has to come from the students."

"Don't expect a committee to walk in and throw something into your lap." He charged the new board to work constantly with the honor committee. "Meet all proposals and consider their merit," Eyer said. "Someday you may have an honor system."

### Student Store Board

Eyer also reported three objectives that have been adopted by the new representatives to store board. First, said Eyer, the board will meet to organize and elect a president next Wednesday. Second, they plan to write to other student stores on campuses throughout the nation to inquire about pricing policy, supervision, and taxation.

A third objective will be to study forms of organization. They plan to explore possibilities of a different type of incorporation, cooperative plans, or some committee set-up operating under ASMSU.

### Tennis Courts

Shirley DeForth, Glendive, retiring ASMSU secretary, and Jim Ryan, Billings, captain of the MSU tennis team, complained to the board that the University has failed to carry out its responsibility to repair the University tennis courts every two years.

They stated that in 1950, \$1,000 was appropriated for the upkeep of the courts. Ryan said, "This has not been done in the four years I've been here."

Central board recommended to the new board immediate action on the project and the establishment of a committee to investigate maintenance of other recreational facilities.

### Lodge Employment

Miss DeForth also recommended that the board look into recent complaints that students had lost their jobs in the Grill room of the Lodge when permanent, non-student help had been employed.

Larry Gaughan, Missoula, senior delegate, referred to a recent Kaimin editorial and recommended that a committee be set up to advocate street improvement in the University area.

## Today's Meetings

Montana Forum, Conference Room 1, noon.

Independents, LA 104, Monday, 7:30 p.m.

Drawings for women's softball tournament, Women's Center, Monday, 4 p.m.

Sponsor Corps will meet at 12:30 today in one of the Conference Rooms of the Lodge.



## Entries Climb To New Mark

A 26 per cent increase in the number of schools registered for the 49th annual Interscholastic Week was announced yesterday by C. F. Hertler, general chairman for the event.

As of noon yesterday, entry forms from 137 Montana high schools had been received as compared with a total of 101 last year. Of these schools, about 130 are expected to compete in athletic events.

Yesterday's figures showed 849 students entered in track and field events, 50 boys and 30 girls in the golf matches, 49 boys and 36 girls in the tennis matches, and 525 students in non-athletic events.

This total may be increased by late entries. Deadline for mailing entries was Monday, May 2, so all entries are expected to be in by this week end. To date all 8 AA and 10 A schools have entered. One hundred and twenty-one B schools have also sent in their entries.

### ORGANIZATIONAL MEETING FOR ALUMNI GRIDDERS

All members of the alumni football squad are requested to meet in the Men's Gym Monday at 3 p.m. for an organizational meeting. Plans for practice sessions will be developed at this time.

### ECSTASY

Otto Cesana  
and His Orchestra  
33 L.P.  
**MUSIC CENTER**

## Joan Arnold, '52 Graduate Reports On Argentine Job, Living Conditions

By VIRDELL GUYER

"Buenos Aires, a city of four million people, is a beautiful place. It is comparable to Paris or New York City in that it is the cultural center of Argentina," said Joan Arnold, 1952 graduate from Malta.

She has just returned to the states after spending two years in Latin America working as a secretary with the army in the American embassy.

"About 300 miles to the south of Buenos Aires you find a summer resort, a few hundred miles another direction takes you to a skiers wonderland and not too far away are the majestic Andes," said Miss Arnold.

Argentine university students are not required to attend classes. All their studying is done at home, exams are given at certain times of the year and if a student feels he is qualified to pass the exam he takes it. If not, he can register for the course again.

"If a person were planning to work in this country, a speaking knowledge of Spanish would be required. If just traveling through, one could get along very well with only English," said Miss Arnold. Those working in the embassy speak English with the exception of translators.

There are no traffic lights in Buenos Aires to worry about. They just don't have them. For those who don't drive, there are marvelous subway systems and excellent suburban trains. At night, driving is allowed with only parking lights on, no bright lights.

"They are half a year ahead of us as far as fashions are concerned.

All their styles come from Paris and Italy and clothes styled for winter over there can be found in similar style of summer clothes here," said Miss Arnold.

There is also a marked difference in price of clothing. Woolens are cheaper in Argentina while cottons may cost twice as much as we pay for them here.

"Markets are specialized. It may take you two hours to do your shopping because you have to go to a different place for each food product you want, but you can get a good steak for less than a dollar at any eating place outside of hotels or very exclusive restaurants," she continued.

Because of confidential work, Miss Arnold was unable to give any information on the Argentine newspapers, dictatorship or communistic influence. However, she was able to say that all the newspapers are government controlled. Miss Arnold was a translator in the embassy.

Miss Arnold was a business major and Spanish minor while attending MSU. She does not know where she will be sent next. It may be Argentina again or some other Latin American country.

## The Montana KAIMIN

Established 1898  
Published every Tuesday, Wednesday, Thursday, and Friday of the college year by the Associated Students of Montana State University. Represented for national advertising by National Advertising Service, New York, Chicago, Boston, Los Angeles, San Francisco. Entered as second-class matter at Missoula, Montana, under Act of Congress, March 3, 1879. Subscription rate \$3.00 per year.

Member,  
Montana State Press Association  
Member, Rocky Mountain  
Intercollegiate Press Association

## 'The Quiet One' Plays on Sunday

"The Quiet One," named one of the 10 best films of the year by Time magazine and the New York Times, and recipient of the first International award, is the Outside Entertainment movie to be shown at 4 p.m. Sunday in the University theater. Price is 25 cents.

The film portrays the life of a boy who grows up in modern society without being given any indication that he is loved or wanted. He builds a wall of silence around himself and the movie is concerned with how this wall is finally penetrated.

"Rubens," the short subject, reveals the nature and form of this Dutch artist's paintings in relation to his predecessors, contemporaries, and successors.

## Steam Valve . . .

Dear Shysters:

It has come to the attention of certain members of the School of Forestry that certain members of the law school have stated that said members of the School of Forestry are unwilling to meet said members of the law school in any fair contest at any time or place.

In defense against this caustic slander, the above mentioned members of the School of Forestry hereby challenge the above mentioned shysters to a contest between muscles which originate between the ears of shysters and the strength which comes from an honest day's work.

Event: A tug-o-war  
Place: Oval  
Date: Friday 13 (our lucky day)  
Time: 10 a.m.

Trusting that we will not see any shysters at this event we remain:

Very truly yours,  
Montana Foresters

Start with the Best  
at a  
SENSIBLE PRICE!

TIME-HONORED  
Nationally Famous

Artcarved  
DIAMOND  
RINGS

Guaranteed On  
4 Quality Points

COLOR • CLARITY  
CUT • CARAT WEIGHT

Permanent value is assured through Artcarved's national-wide trade-in privilege.



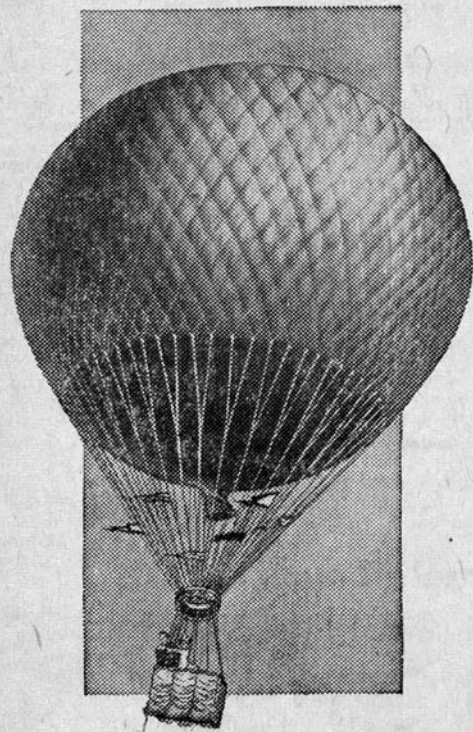
EXETER SET \$270  
Engagement ring \$190.00  
Bride's circlet \$ 80.00

BUDGET PAYMENTS

Advertised in LIFE and LOOK  
Beloved by Brides  
For Over 100 Years  
Rings Enlarged To Show Detail  
\*Trade Mark Reg.

Heinrich Jeweler

132 N. Higgins



When the only  
air travel was  
by balloon,  
Budweiser  
led all beers in  
sales. And...

today

**Budweiser**

ANHEUSER-BUSCH, INC.  
ST. LOUIS • NEWARK • LOS ANGELES



still leads the world's beers  
in sales and quality because  
...because it's Budweiser

Something more than  
premium quality  
...Budweiser quality!



Don't

Forget

Mother's  
Day!

She'll enjoy a Delicious  
Dinner at the . . .

**MONTMARTRE CAFE**

MISSOULA HOTEL



# Functions Crowd Calendar

Spring functions galore crowd the social calendar this weekend. In dance, and the Phi Sigma Kappa day night is the Alpha Phi dinner. Beachcomber's party, Saturday the Synadelphic swimming party, Tri Delt sunrise breakfast, and the KKG and KAT formal dinner dances. The ATO weekend also on the calendar. New edges, weddings, and pinnings highlight other social news.

## New Pledges

Lupita Da Costa Gomez, Honoras, is a new pledge of DG. Jan Mende, Sidney, is a new pledge of Tri Delt. New pledges of KKG are Barbara Eastlick, Darlene Glantz, and niece Welton, Billings; and Jan eigand, Hardin. Betty Adams, Butte, and Nan aines, Sunburst, are new pledges Alpha Phi. New pledge of PDT is Gerald nderson, Chester.

## Weddings

Two Delta Gammas married two i Deltis Saturday. Andrea Berg, er Lodge, was married to Bob wrence, Richland, at the Meth- ist church Saturday afternoon. rlene Dragstedt, Missoula, ex- anged vows with Charles John- n, Anaconda at the First Presby- rian church Saturday evening.

## Pinnings

Betty Fuller, AP, Winifred, is aring the Sigma Nu pin of Ed genbright, Cut Bank.

Ruth Grandy, Great Falls, is pinned to Dallas Eaton, SN, also of Great Falls.

Norma Jean Mogen, Great Falls, is wearing the TX pin of Rex Chamberlain, Great Falls.

## Bridal Shower

The Delta Gammas gave a bridal shower Wednesday night for Ann Thomson, Kalispell; Joan Brooks, St. Ignatius; Kathy Booth, Helena; and Creta Stucky, Las Cruces, N. M.

## Sneaks

SAE pledges staged a successful sneak Friday night.

Alpha Phi and Sigma Nu pledges and first year actives had a successful sneak Saturday morning.

## Exchanges

The Alpha Phis had an exchange dinner with the Phi Deltis Wednesday.

The Thetas were guests of the PSK's at a dessert dance Wednesday night.

## Convention Delegates

Nine Tri Deltis attended the DDD convention in Billings last weekend. They were Kay Holtz, Sunburst; Carol Hestekin, Billings; Ruth Franz, Kalispell; Delores Guilbault, Missoula; Mary Lou Flodin, Plains; Dorothy Thompson, Whitelash; Ellen Haugen, Chinook; and Darlene Campbell, Manhattan.

## New Officers

New officers of SAE elected Monday night include Bill Ham- mer, Stanford, vice-president; Bob

Engle, Billings, house manager; Rae Young, Billings, treasurer; and Bob Gilluly, Glasgow, pledge trainer.

## Serenade

The Phi Deltis gave Marilyn Shope, KAT, Missoula, a serenade Monday night. She is pinned to Keith Peterson, Seattle, Wash.

## Dinner Guests

Shirley Duncan, Hinsdale; Roxie Perrior, Missoula; Marcia Brown, Butte; Nan Haines, Sunburst; Mar- gie Montague, Great Falls; Betty Adams, Butte; and Patti Forzley, Seattle, were luncheon and din- ner guests at the Alpha Phi house this week.

Mr. and Mrs. E. O. Gunkel, Mis- soula, were recent dinner guests at the KKG house.

## Miscellaneous

Nancy Trask, Deer Lodge, was awarded the \$25 Packard award for outstanding Tri Delt freshman.

Chairmen of the ATO Inter- scholastic display are Arliss Berg, and John Rounds, Missoula; and Bill Holt, The Dalles, Ore.

Kay Wohlgenant, Miles City, was elected chairman of the Tri Delt house standards committee.

A slumber party will be held for guests and pledges at the Tri Delt house Friday night.

The Missoula SK alums took the SK seniors to dinner Tuesday night.

## House Guests

Winnie Dinn '54, AP, Butte, was a week-end guest at the AP house.

Recent house guests of the TX's included Rex Chamberlain, Great Falls; Dick Tracy, ex-'56, Stevens- ville; and Bill Gibson '52, Kali- spell.

The traveling field secretary of Theta Chi, Charles Leadbetter, Chapel Hill, N. C., is staying at the TX house this week.

## Ten Students Journey To Butte Speech Tourney

Ten students accompanied by Ralph Y. McGinnis and Evelyn H. Seedorf, speech department fac- ulty members, left last night for Butte to attend the Montana Intercollegiate Speech tournament held today and Saturday.

Four debate teams from MSU, three men's and one women's, will participate in activities. Team 1 consists of Don Mosher and Bruce Cook, both of Butte; team 2, Jerry Rutan, Great Falls, and Ronald LaBuff, Missoula; team 3, Jim Roberts, Dillon, and Tom Haney, Butte; and team 4, the women's team, consists of Lois LeDuc, Lib- by, and Joan Ward, Missoula.

Rutan is also entered in oratory. Joan Stratton, Missoula, and Miss LeDuc will compete in oral inter- pretation of literature, and Jerry Weissman, Great Falls, is entered in extemporaneous speaking.

Miss Seedorf and Prof. McGinnis will act as judges at the tourna- ment.

## Rutan Takes First In Aber Oratorical

Jerry Rutan, Great Falls, won first place and \$20 in the annual Aber Memorial contest Wednesday night, with his talk on "A Malady of the Stomach," which proposes that the United States must de- feat hunger in order to defeat Communism.

Second place went to Sheila McDorney, Missoula, with her talk, entitled "Who Is Delinquent?" In her speech, she stressed that adults are the ones who are delinquent; the child is made delinquent by its parents. She won a \$10 prize.

James Roberts, Dillon, took third place and a prize of \$5 for his talk, "And Then Some," a speech pointing out ways in which the United States can achieve great- ness.

Judges for the event were Seth A. Fessenden, associate profes- sor of English; Evelyn H. Seedorf, associate professor of English and speech; and Kenneth H. Hoover, visiting instructor of education.

Five students participated in the contest.

## Thank You . . .

I want to take this oppor- tunity to say thanks to all of you who gave me your support in the past elections.

**John Fowler**

## Special Lunch—60c

Friday, April 6

## GRILL ROOM

Cream of Potato Soup  
Egg Salad Sandwiches  
Pimiento Cheese on Rye Bread  
Cabbage-Apple Salad  
Orange Ice Box Cookies  
Bread and Butter  
Coffee, Tea or Milk  
**HOURS: 11:30 a.m.-1 p.m.**



## Our Ice Cream Is Cold!

The snow is melting on the moun- tain tops, but not the ice cream behind our counter.

★ SANDWICHES ★ BURGERS ★ MALTS  
**PALLAS CANDY SHOP**

## Announcing

## The University Nursery School

SUMMER SESSION

June 13-July 15; 9 a.m. to 3:30 p.m.

Ages 3, 4, 5

Rates—5 weeks, \$25 — Register at Simpkins Hall Nursery

Phone 9-2331, Ext. 19

## Stanley Color

## Laboratory

Is Processing

## The New Ektachrome

Ektachrome, long used by professional photog- raphers, is now available in 35mm and 828 sizes. Ektachrome gives you these features for better spring picture-taking around the campus:

- ★ Speed—Ektachrome is three time as fast as Kodachrome
- ★ More depth of field in color, wider utility —because of smaller lens apertures
- ★ Easier picture-taking in shade and dull days

35mm Ektachrome—\$1.85 purchase price; \$1.40 process charge

828 Ektachrome—\$1.00 purchase price; \$1.00 process charge

## STANLEY COLOR LABORATORY

In the Wilma Building

## Thurs.-Sat.

FIRST RUN PICTURE

## "SINS OF ROME"

Lusting for Life . . .  
Love . . . Excitement . . .  
Terror!

Wild Days of History's  
Most Sin-stained Era  
and

## "THE HOUR OF 13"

Peter Lawford-Dawn Addams

## Starts Sunday



— ALSO —

## "Ride Vaquero"

Ave Gardner-Robert Taylor  
Howard Keel

South "MILLION DOLLAR MERMAID" Light

## Campus Theater



Send Her

A Lovely Bouquet or  
Plant from

**HEINRICH FLOWERS**

Dance to the

Big Band Beat

of

**TONY PASTOR**

And His Orchestra

Tuesday, May 10

9-1

Cascade Room—MSU Lodge

Tickets on Sale in the Lodge

\$1.00 Per Person



## Pitching, Hitting Is Fote of New Hall

By GENELL JACKSON

Another women's softball team making a strong bid for the intramural crown is Kay Calvin's New Hallers, who are currently in first place with a 4-0 record.

New hall has proven to be one of the better balanced clubs in the round-robin, with a lot of hitting power, better-than-average fielding, and the outstanding pitching ability of Miss Calvin.

She has thrown a one-hitter against the Kappa's, and in three contests, using a combination of fast ball, curve, and spin, has relinquished only 13 hits. She has 19 strike-outs and four walks on her record.

Batting clean-up, she has pounded out a homer and scored five runs.

1/4-lb. Beefburgers and  
French Fries 40c  
**MINUTE KITCHEN**  
1132 W. Broadway

## Going Home For Mother's Day?



Let us put your car in Top  
Driving Condition

**ROEMER'S CONOCO**

130 E. Main

Free Root Beer Tickets with Each 5 gal. of Gas

## For Warm Weather Comfort

slip into  
**WHITE ELK  
SHOES**

from

**DIXON & HOON  
SHOE CO.**

133 N. Higgins

\$5.95



Nothing too Good  
for **MOM!**

Roses for Mother . . . they're a wonderful tradition—a gift from the heart, they say more than words can tell. Far above the commonplace, they say not just "what does she want?" but "how best can I tell her I love her?"

HALLMARK CARDS

**GARDEN CITY FLORAL**

Phone 6-6628

## Welch-Comer Duel Keynotes Link Tilt

Today's golf match between Utah State and Montana shapes up as a personal duel between Grizzly captain Don Welch and the Aggies' Jerry Comer.

The two teams square off at 1:30 at the Missoula County Club course.

Comer is the only opponent this season who has approached Welch for medalist honors in dual meets. Both men shot a 73 at Logan last month.

Aside from this tie, neither man has been outscored in any of their dual meets.

The Aggies bring a team composed entirely of freshmen to Missoula. Golf coach Ev Thorpe of USAC says this is the most promising golf team he's had in years at Utah State, saying, "Fans at Logan won't have to learn any new names and faces at the golf course for another three years."

Besides Comer, the Aggie squad has Larry Bailey, Bill Glover, and Dick Criddle.

Grizzly coach Dr. Don Barnett will go with Welch, Bob Riefflin, Dave Burton, and Jim Jackson.

## MSU Hopes for Track Triumph Rests on Weather, Performances

Grizzly track coach Harry Adams surveyed yesterday's balmy weather from his office in the men's gym, crossed his fingers, and hoped for continued good weather until the Grizzlies meet Utah State in a dual meet Saturday afternoon.

"Funny thing about weather around here," he commented. "We usually have two or three days of good weather and then it turns windy."

Adams added that a combination of good weather and improved performances by his men will give the Grizzlies their first Western division victory of the season.

"They're strong in the same places we are," said Adams. He indicated that he would enter as many men as possible in each event in the hopes that the Grizzlies could pick up some valuable second and third places.

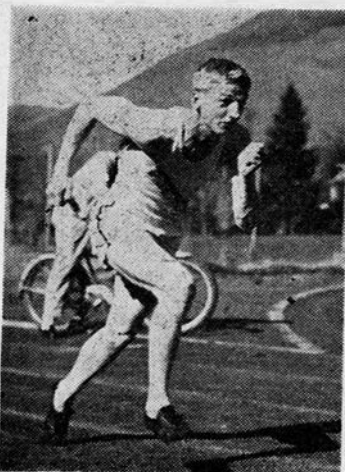
The college meet will start at 1:45. A high school meet between two strong AA competitors—Butte high school and Missoula County high school—will get under way at 12:45.

Utah State will not arrive in Missoula until late today, so Adams had no idea of the USAC entries in the meet. He did, however, list the Grizzly entries in various events:

100-yard dash—Brant, Haslip, and Cross, possibly Lonner.

220-yard dash—Brant and Lonner.

## The Pooter . . .



Grizzly track captain Don Brant, considered one of the top sprinters in the Skyline, will lock horns with Utah State's Ezra Smith in the century and furlong. Brant is still striving to smash the Dornblaser field marks for these events—.09.6 and :20.7, respectively—which were set by Jack Emigh in 1938.

## Softball Schedule—

MEN'S

4:00—Dukes vs. Forestry (Stocking and Stolz); Sigma Nu vs. Sigma Phi Epsilon (Holt and Kann). 5:30—Law vs. Jumbolaya (Nickel and Luce); Jumbo vs. Sonowea (Manuel and Kann).

## MAJOR LEAGUE SCORES

National

Brooklyn 4, St. Louis 3; Pittsburgh 9, Milwaukee 4; New York 6, Chicago 3. Cincinnati and Philadelphia were idle.

American

Detroit 3, Boston 2. No other games scheduled.

## House Furnishings

Since 1889

**J. M. Lucy  
& Sons**

## PEK GETS THREE MEMBERS;

## SETS DATE FOR PICNIC

Three new members—Ray Rana, Missoula; Hugh Fowler, Ravalli; and Tom Garoutte, Wapiti, will be initiated into Psi Epsilon Kappa, men's physical education honorary, this Sunday.

At a meeting Wednesday night, PEK also scheduled their annual spring picnic for Sunday, May 15, at Montana Power park.

The picnic will be open both members of the collegiate chapter and the alumni chapter in Missoula.

## Softball Results

MEN'S

Sonowea 6, Sigma Nu 1; Jumbolaya 20, Dukes 6; Forestry 1, Sigma Phi Epsilon 2; Jumbo 2, Hurricanes 14.

WOMEN'S

Delta Gamma forfeit to Northern Hall.



A Real Treat

for Mother . . .

Dinner at

**Happy Henry's**

Open Sundays 12-10 p.m.

— NOW PLAYING —

**MOST INCREDIBLE SIGHTS  
EVER FILMED!**

KROGER BABB presents  
**KARAKOJA**  
(LAND OF LOST PEOPLE)  
IN NEW EASTMAN  
COLOR

2nd  
Hit! "HALF-WAY TO HELL"

SHOCKING!  
TRUE!

with  
Cast of Thousands

— STARTS SUNDAY —

**M-G-M's Joyous Musical!**

**HIT  
THE DECK**

IN COLOR AND  
**CINEMASCOPE**

STARRING  
**JANE POWELL · TONY MARTIN**  
**DEBBIE REYNOLDS · WALTER PIDGEON**  
**VIC DAMONE · GENE RAYMOND**  
**ANN MILLER · RUSS TAMBLYN**

with KAY ARMEN · I. CARROL NAISH · RICHARD ANDERSON · JANE DARWELL

— COMING SOON —

**THE SCORCHINGLY PERSONAL BEST-SELLER!**

**"Battle  
Cry"**

PRESENTED BY WARNER BROS.

WARNERCOLOR **CINEMASCOPE** STEREOGRAPHIC SOUND  
STARRING  
**VAN HEFLIN · ALDO RAY · MONA FREEMAN · NANCY OLSON · JAMES WHITMORE**  
**RAYMOND MASSEY · TAB HUNTER · DOROTHY MALONE · ANNE FRANCIS**

ALL PLAYING AT REGULAR PRICES

**WILMA**



## Grizzly Nine Has Last Chance To Post Skyline Win Today

Grizzly baseball coach Bob ... still undecided on his ... due to injuries to two reg- ... will send Paul Caine to the ... to face Marv Shields of ... State when the Grizzlies ... off against USAC at 2 p.m.

The nightcap begins at 8 p.m. ... ace pitchers Glenn Biehl of ... ana and Cliff Lee of the Ag- ... figure to turn that game into ... her's duel.

The Aggies won two games by ... and 3-1 scores from Mon- ... last month at Logan, Utah. ... pitched a one-hitter in the ... victory with Grizzly catcher ... Walker spoiling Lee's bid ... no-hitter.

Yesterday Byrne still didn't ... whether leftfielder Keith ... son or second baseman Hal ... rholler will be able to start. ... ces are, however, that Dick ... will break into the lineup ... time in the double header.

The speedy utility outfielder ... ed a Grizzly rally last week- ... against BYU, gathering two ... in the late innings of the se- ... game. In his brief stint Bork ... ved a rarity—he scored from ... ase on a single.

He may move third baseman ... Hendricks to second base in ... Winterholler isn't in the ... p. In that case, Murdo

Campbell will take over at third, with brother Tom Campbell hold- ing down the shortstop position.

If Winterholler starts, it's a toss- up whether Murdo or Tom Camp- bell will start at shortstop.

Possible starting lineups:

<b>Montana</b>	<b>Utah State</b>
Hendricks, 3b	Taggart, ss
Peterson, lf	Spareboom, rf
Walker, c	Shelton, 1b
Humble, cf	Tilly, cf
Pottenger, 1b	Kragthorpe, c
M. Campbell, ss	J. Lindsay, lf
Winterholler, 2b	Woodward, 2b
Kocsis, rf	D. Lindsay, 3b

## Professors Leave For Conference

Dr. Bert Hansen, professor of English, and Jules A. Karlin, as- sistant professor of history and political science, left late Wednesday afternoon to attend the Pacific Northwest History con- ference at Spokane today and to-

Dr. Hansen will present an ad- dress at an informal dinner to- night on the subject, "The Men With Lewis and Clark."

At 2:30 p.m. tomorrow, Prof. Karlin will represent MSU in a panel discussion on the topic, "The 20th Century in Northwest His- tory." Others participating in this particular panel will be the mod- erator, Prof. Siefried Rolland, University of Idaho; Dr. Charles Gates, University of Washington; Dorothy Johansen, Reed college, Portland; and Dr. Francis Haines, Oregon College of Education.

## Silvertip Netters Will Play Three Weekend Matches

Captain-coach Jim Ryan and his five Grizzly tennis mates—John Powell, Dick Crist, Jim Kelly, Jim Andrews, and Stuart Gallagher— will have their busiest week end of the season Friday and Saturday.

Friday afternoon the Grizzly netters meet Utah State Aggies in a Western Division clash.

Saturday at 10 a.m. the Silver- tips play Montana State college, and then go against a team from Great Falls Air Force base at 1 p.m.

Ryan says his squad has "a better than even" chance of win- ning their first Western division match of the season against the Aggies. Utah State captured a 6-3 victory over Montana at Logan last month, but Ryan feels that the home court advantage will give his team the breaks this time.

Utah State tennis players are Ivan Christensen, Don Woodward, Don Larsen, Clint Hales, Carlos Smith, and Don Wortley.

Christensen and Woodward are the Aggies' big guns—they won the only USAC doubles match against Montana and also captured their singles match against the Grizzlies.

Little is known of the Bozeman squad, except that they have been hampered by lack of practice due to late-season snowfall in the Gal- latin valley.

The members of the air base "Jet Liners" tennis squad are S/Sgt. Bob McDole, player-coach; Lt. Bill Jones, former Kaimin ed- itor and tennis letterman; Lt. Drake Delaney, Lt. Charles Payne, Lt. Herb Shindler, and Carter Wil- liams.

All of the air base netmen have had tournament experience. Mc- Dole played for Notre Dame, De- laney competed for the University of Nevada, Shindler played with Alfred University, Payne compet- ed for the University of Okla- homa, and Williams is a veteran of Great Falls city tourneys.

Williams is a Great Falls lawyer the base team is using to comple- ment the squad. This will be the first match of the year for the Jet Liners.

McDole's tennis experience has been divided between the Indiana area and the European theater. He won the Indiana state champion- ship in the boys' division, then rose to ninth in junior division national standings. He coached the All-European championship team last year at Wiesbaden, Germany.

## Grizzly Gridders Will Tangle With Alums May 19

The Grizzly spring football squad will have a real objective in the annual end-of-season clash this spring. The Missoula Boost- er club has arranged for an alumni team to meet the varsity May 19, under the lights.

Most of the players who will compete against coach Jerry Wil- liams' charges are former Grizzly standouts. Among these are Dick Imer, Bill Gue, Tom Kingsford, Dick Heath, Bob Dantic, Murdo Campbell, Ken Campbell, Joe De- Luca, Marlyn Jensen, "Moose" Miller, Keith Peterson, and George Samuelson.

The Missoula Boosters are spon- soring the game as a fund-raising activity to boost Grizzly athletics. They stated that no complemen- tary tickets have been authorized, and Grizzly football coaches Jerry Williams, Fred Naumetz, and Bob Zimny were among the first to purchase ducats for the game.

## Interscholastic Attracts 941 Entries, 100 Schools

Last-minute entries have swell- ed the Interscholastic track and field roster to 941 athletes from an even hundred schools.

The bulk of the prep cinder burners come from class B schools—numbering 84 strong. There are the usual 10 class A and six class AA schools entered.

Missoula, Butte, and Helena are the powers in the class AA divi- sion, with Missoula favored to cop its third consecutive crown. Custer County appears to be head- ed for its second straight title, mostly on the wings of its ace sprinter, Chuck Carlson.

In the class B division Lodge Grass, Libby, Whitefish, and Pol- son seem to have the majority of the points tied up. Last year Whitefish squeezed by Lodge Grass to take the championship.

KAIMIN CLASS ADS PAY

## Classified Ads . . .

FOR SALE, by owner: 2-bedroom home, in excellent cond.; 3 blocks from Univ., 60x120 lot; fireplace, large bsmt., oil furnace, gar., interior newly decorated, new kitch.; ideal for small family, \$12,300; buyer can assume large G.I. loan at 4%; phone 2-2530. 100c

FOR SALE: Tux., 38-short. Call 9-3625. 100

ROOM FOR RENT: Chimney Corner, tf

LOST: Gold ring with garnet set in men's gym. Reward. Notify Pat Grant, PE office. 100c

FOR SALE OR TRADE: '51 Ford con- vertible, Ford-o-matic. Radio, heat- er, excellent mechan. condition. Con- tact Athletic Dept. secretary or 6-6935. 100c

FOR SALE: Ford Crown Victoria. \$600 discount. Phone 9-7578. 100c

## ALASKA, HAWAII and All the WEST

Register now for immediate and fall vacancies. Certification Booklet with Free Life Membership. **HUFF TEACHERS AGENCY** 2129 Gerald Ave., Missoula Ph. 6-6653 40 Years of Placement Service

## Special Sunday Supper

MAY 8, 1955

30c

## Grill Room

Sandwich  
Potato Chips  
Mixed Fruit Salad  
Cookies  
**MEAL HOURS**  
5:30 to 7:30 p.m.

## BRAND NEW 1955 FORD Crown Victoria

Pink and White  
Fully Equipped

**\$600 Discount**

Has Authorized Warranty and  
Service Policies

Phone 9-7578 Even. 5:30-7:30

## FINAL DRASTIC REDUCTIONS

SACRIFICE PRICES ON ALL JEWELRY

Diamonds - Watches - Silverware  
Rings - Costume Jewelry - Gifts

Quitting Business — Everything Must Go  
TREMENDOUS BARGAINS WHILE THEY LAST!

**BORG'S JEWELRY**

227 N. Higgins

## Don't Forget!

Roy Standly

Trio

(Playing Nightly)

Sunday Night Is

Jam Nite



Musicians—Bring Your Lil Ole  
instruments and join in the fun!

**PARK HOTEL**

**YELLOW CAB  
TAXI  
6-6644**

Prompt and  
Courteous Service

## He's Loaded . . .

But you don't have to be  
to enjoy our barbecued  
sandwiches (toasted bun)

Ham, Pork, Beef, or  
Twinburger with French  
Fries or Potato Salad

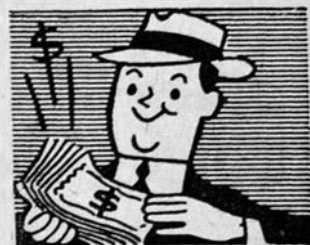
—55c—

at the

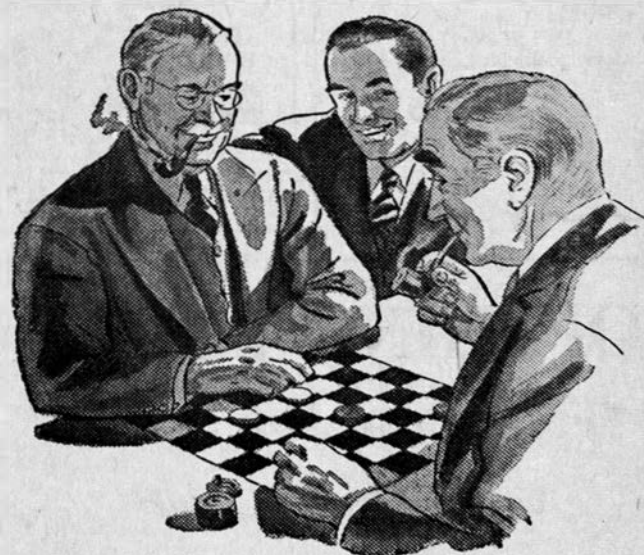
## FAIRWAY DRIVE-IN

"HOME OF THE BASKETBURGER"

South on Hiway 93



Open 7 a.m.-3 a.m., Saturday  
Other Days, 7 a.m.-1 a.m.



Wherever  
Men Gather  
You Can Be  
Sure It's . . .

*Highlander*

none finer . . anywhere

Brewed by MISSOULA BREWING COMPANY





# '49 GRADUATE TO WIN PH.D. IN PHILOSOPHY IN JUNE

Marc Bensimon, who received his bachelor's degree in romance languages from MSU in 1949, has been notified by the University of Pennsylvania that he has met all requirements and will receive his degree of Doctor of Philosophy from there in June.

At present, he teaches French, Spanish and English courses at Pennsylvania Military college. The 29-year-old professor was born in Algiers, and moved to the United States in 1947.

## KAIMIN WANT ADS PAY

*Cecil's*  
presents  
*Lamper Pants*  
by *Alba*



**Fabulous New  
Miracle-Stretch  
Nylon Panty Brief**

Packaged no larger than a powder puff. Full-fashioned all nylon, (like your finest hose) these deceiving little wonders fit all sizes from 4 to 7. In pretty powder puff colors—white, pink, blue, black or red.

**\$1.95**

# Bartels, Knight Get Tri Delta Awards

The Tri Delta general scholarship was awarded this year to two outstanding girls, Barbara Bartels, Miles City, and Barbara Knight, Billings.

This \$200 award is given annually by the Tri-Delt alumni to a deserving girl on campus. Because of the outstanding qualities of both of these girls, each was awarded \$100.

All women students in colleges where there are Tri-Delt chapters are eligible to apply. They may or may not be sorority members, but should be well-qualified students showing promise of being valuable citizens in their future communities.

The amount of awards on any one of the 96 campuses included in the competition does not exceed \$200.

## STATE

DRIVE IN THEATER

SUNDAY & MONDAY  
Adults Only 50c

TWO BIG COLOR HITS!

IT'S A HOWL  
AS ALL YELL  
BREAKS LOOSE!



**SUSAN SLEPT HERE**

Dick POWELL  
Debbie REYNOLDS  
TECHNICOLOR

Also—"Captain Scarlet"

# Living Groups Plan Activities For Interscholastic Week End

MSU students will once again play a large part in the activities of Interscholastic week, according to Bob Gilluly, Glasgow, chairman of Traditions board.

Chief item on the Tradition's list for this week end is the decoration of fraternity and sorority houses and men's and women's dormitories.

On the evening of Friday, May 13, there will be an SOS for the presentation of various awards.

Newman club will sponsor a songfest on Thursday evening, the first day of the meet.

## Hello Walk Painted

Besides planning for these events, Traditions board yesterday completed one more phase in the rebirth of an old MSU custom. With the aid of many freshman volunteers, Hello Walk was painted. Still to be inlaid in the cement at both ends of the Walk, are two bronze plaques with the name of the walk inscribed in them. These will be donated by the Bear Paws.

Dedication ceremonies for Hello Walk will take place at 7:45 on Friday morning. Presiding will be Stan Nicholson, Missoula, president of the Grizzly Growlers.

Gilluly said that no theme for house decorations had been chosen, but added that Traditions board had suggested that "I'm Going to Be a Grizzly" would be a suitable idea to work into the decorations.

## Prizes for Decorations

He said that judging of the various living group decorations would take place on Friday, May 13, from 1 p.m. to 2 p.m. There is a \$25 limit on the cost of all decorations. A prize will be awarded to the best men's living group decorations, and to the best women's living group decorations.

Highlight of the Friday evening SOS will be the tapping of

new Spurs, Mortar Board, and Silent Sentinel members. On the evening before this traditional tapping, members of Mortar Board observe their tradition by serenading the houses of those who will be chosen the next night.

The Sibley award, given annually to the student who does the most to further MSU traditions, will also be presented at the SOS. The names of candidates for this award were submitted to Traditions board by the various living groups. A three-man board, including Pres. Carl McFarland, recently completed evaluating the applications. The winner will not be announced until the exact moment of the presentation. Don Stagg, Butte, will supply the music.

Among the volunteers who turned out to paint Hello Walk yesterday afternoon were: Stuart Nicholson, Missoula; Barbara Barton, Belgrade; Jackie LaRue, Great Falls; Bob Higham, Belfry, and Dick Dodge, Missoula. These people aided in organizing the painting project. They were assisted by numerous freshmen.

**GOLDEN PHEASANT**

11:30 A.M. TO 12 P.M. WEEKDAYS  
11:30 A.M. TO 3 A.M. SATURDAYS  
(Closed Wednesdays) Phone 9-9953

# Students Compete For Scholarship

Twenty-four Montana school students who placed high in the America Counsel of Education tests, compete for MSU scholarships during Interscholastic week.

Each student will be given an ACE university entrance exam and the 12 highest will receive University scholarships, bearing the title Worthy Scholar.

Exams are scheduled for the morning of Interscholastic week that afternoon, according to their own special interests, each student will be interviewed by the faculty of the various schools and departments.

At a Saturday noon Interscholastic lunch the 12 scholarship winners will be announced.

## KAIMIN WANT ADS PAY

**Getting We**  
Try  
"Cravenette"  
**City Cleaner**

610 South Higgins  
Phone 6-6614

IN MISSOULA AT . . .

# The Mercantile

INTRODUCING THE GLAMOROUS NEW

## SEA LURE



A California Original  
In Sizes 32 to 38.

**5.95**

For your swimming and sunning fun—we take great pleasure announcing the introduction of glamorous new California Original Sea Lure swim suits. Here we've sketched a cotton print with draped hip styling and pared midriff. In Turquoise/Black, Avocado/Black, and Coral/Black. Sizes 32 to 38. Priced only 5.95

TOWN AND COUNTRY SHOP . . . second floor

# OPENING TODAY

## "Taming of the Shrew"

enjoyed by thousands

In

- ★ GREAT FALLS
- ★ RED LODGE
- ★ LIVINGSTON
- ★ HAMILTON
- ★ BOZEMAN
- ★ BILLINGS
- ★ HELENA

Now Playing Missoula

UNIVERSITY THEATER

Friday-Saturday, May 6-7

8:15 p.m.

University Students	25c
High School Students	60c
General Admission	\$1.20

Call 9-2331—Simpkins Box Office

Sunday-Wednesday

**POWERFUL STORY OF THE WEST...Thrilling, daring...and necessarily violent!**



GLENN FORD  
BARBARA STANWYCK  
EDWARD G. ROBINSON  
in  
**THE VIOLENT MEN**  
CINEMASCOPE  
TECHNICOLOR!!  
A COLUMBIA PICTURE  
Dianne FOSTER • Brian KEITH • May WYNN

PLUS THIS CO-HIT

Bullet-for-Bullet Payoff!



Peter REYNOLDS • Rona ANDERSON

THE PLACE TO GO  
**FOX**