

University of Montana

ScholarWorks at University of Montana

Montana Kaimin, 1898-present

Associated Students of the University of
Montana (ASUM)

9-30-1955

The Montana Kaimin, September 30, 1955

Associated Students of Montana State University

Follow this and additional works at: <https://scholarworks.umt.edu/studentnewspaper>

Let us know how access to this document benefits you.

Recommended Citation

Associated Students of Montana State University, "The Montana Kaimin, September 30, 1955" (1955).
Montana Kaimin, 1898-present. 3131.

<https://scholarworks.umt.edu/studentnewspaper/3131>

This Newspaper is brought to you for free and open access by the Associated Students of the University of Montana (ASUM) at ScholarWorks at University of Montana. It has been accepted for inclusion in Montana Kaimin, 1898-present by an authorized administrator of ScholarWorks at University of Montana. For more information, please contact scholarworks@mso.umt.edu.

THE MONTANA KAIMIN

Montana State University, Missoula, Montana
Volume LVII Z400 No. 2 Friday, September 30, 1955

Theta 1954-55 Grade Totals Lead Campus Living Groups

Kappa Alpha Theta women led all other living groups in grades for the third successive quarter spring quarter. Their 57 members had an average index of 2.979. The all-University average for 2,245 students was 2.550.

Theta Chi's 31 members led among men with 2.565. Women led the men by a .204 margin in the over-all index. The remaining group scores as released by Leo Smith, registrar, are as follows:

- Women**
- Kappa Alpha Theta—2.979
 - Synadelphic—2.882
 - Delta Gamma—2.869
 - All Sorority Women—2.724
 - New hall—2.704
 - All University Women—2.696
 - North hall—2.666
 - Non-Sorority Women—2.664
 - Delta Delta Delta—2.654
 - Alpha Phi—2.632
 - Kappa Kappa Gamma—2.564
 - All University—2.550
 - Sigma Kappa—2.530
 - Corbin Hall—2.534
- Men**
- Theta Chi—2.565
 - South Hall—2.559
 - Alpha Tau Omega—2.557
 - Sigma Alpha Epsilon—2.554
 - All-University—2.550
 - Phi Delta Theta—2.508
 - Non Fraternity Men—2.507
 - All University Men—2.492

Calling 'U'

Members of the Christion Science organization will meet at 3 p.m. Sunday in conference rooms one and two of the Lodge.

Traditions board will hold a luncheon meeting in the Lodge today.

Publications board is to meet in the Yellowstone room of the Lodge at 4 p.m. Tuesday.

AWS Executive board will meet in the Lodge, Monday at 4 p.m. in conference room 2.

Othello Workouts Set for Oct. 3-4

Tryouts for Shakespeare's "Othello," the first University drama department production of the school year are scheduled for October 3 and 4 from 3 to 5 p.m. and 7:30 to 9 p.m.

Leroy Hinze, assistant professor of drama, announced that the tryouts would take place in Simpkins Little theater. He said that aside from acting there are many jobs in business management and backstage work open to students.

U.S. Air Force Band Presents Concert Tonight in Field House

A B-36 from Geiger Air Force Base in Spokane, flew over Missoula yesterday as a salute to the United States Air Force Band, which will present matinee and evening concerts in the University Field House Friday, according to Col. D. C. Jamison, who recently assumed command of the Air Force ROTC detachment at MSU.

The two concerts will be at 3 p.m. and 8:15 p.m. Friday, sponsored by the Montana State University band. Tickets are available at the Lodge, Field House, music stores, music faculty members and at the grade and high schools.

The band will be under the direction of its commander and conductor, Col. George S. Howard, Chief of Bands and Music for the

- All Fraternity Men—2.457
Sigma Nu—2.456
Sigma Chi—2.420
Craig hall—2.353
Phi Sigma Kappa—2.266
Sigma Phi Epsilon—2.190

Six Sororities Pledge 132

Sorority rushing at Montana State University ended Monday with 132 women pledging the six national sororities. Alpha Phi and Kappa Alpha Theta led the groups with 26 pledges each, followed by Delta Delta Delta with 25, Kappa Kappa Gamma, 23, Delta Gamma, 22, and Sigma Kappa, 9.

Sorority pledges by home towns:

Alpha Phi: Billings — Jean Choate, Sara Ruth. Bonner — Betty Akerson. Butte — Sally Barker, Deanna Dean, Nancy Rood. Cut Bank — Mary Ann Arras, Arla Engebretsen, Dorothy McGuire, Jeri Miller, Peggy Jo Neil. Eureka — Delsena Peterson. Glendive — Pat Harstad. Havre — Ardith Hamilton, Gail McLain.

Kalispell: Kay LeFevre. Laurel — Kathleen Gary. Missoula — Frances Ferlan, Sharon Orr. Philipsburg — Judith Pearson. Stevensville — Judith Baldwin. Valier — Carol Othhouse. California: Costa Mesa — Ann Allen. Canada: Calgary, Alta. — Dorothy Bond. Washington: Chewelah — Jacqueline Jacks. Richland — Sue Marble.

Delta Delta Delta: Anaconda — Carol Corkish, Ruby Krizan. Billings — Elizabeth Astle, Jean Comte, Margaret Stuber, Joan Waite, Barbara Wood. Boulder — Ann Twoly. Butte — Laura Crowley, Virginia Vivian. Excelsior — Claudia Lillie. Glendive — Donna Mae Hubbard. Lewistown — Freda Smith, Loretta Sperry.

Missoula — Joanne Chaffey. Philipsburg — Dawn Lee Page. Rock Springs — Betty McWilliams. Thompson Falls — Diane Davis. Whitefish — Colleen Cheever. California: Costa Mesa — Sue Thomas. Los Angeles — Vicki Rippetto. Santa Cruz — Marion Hagler. Illinois: Deerfield — Delores Ubl. Waukegan — Sue E. Hommon. Washington: Seattle — Elizabeth Warner.

Delta Gamma: Billings — Barbara Chapple, Greta Peterson, Audrey Wacker. Butte — Dorothy Dunbar, Anne Thomas. Chester — Meredith Swank. Great Falls — Sue Williams, Lora Jo Zoller. Helena — Virginia Bacon. Livingston — Nancy Nelson. Missoula —

(Continued on page six)

Liquor Control First Draft Decided Upon

By RON ERICKSON

A joint student-faculty liquor control committee has wound up a summer of weekly meetings and says that the first draft of regulations on student liquor control which they have proposed has been sent to press.

Besides the faculty, Gary Jystad, Kalispell, ASMSU president, appointed Ann Crocker, John Fowler, and George Lambros, all of Missoula, to be student representatives during the summer months. Jystad, Bruce Crippen, Billings, and Mary Ellen Erickson, Aberdeen, S. D., as president, business manager, and vice president of ASMSU have also met with the joint committee.

In the meantime, the committee has released a temporary set of rules and already two students have felt the stern hand of enforcement. Two male students have been excluded from school because of violations.

Regular Enforcement for Now

Until a final plan of attack has been mapped out by further work in the student-faculty committee, the university apparently plans to enforce the rules and policies through the usual channels.

The temporary rules are: "First, there is to be no liquor, drinking, or drunkenness on the campus at any time, by anyone at any place. Second, the same is strictly prohibited on the part of student or campus organizations, at their functions, by anyone, at any time, place, or occasion. Third, offending individuals are to be excluded from the campus, student organizations, or student functions whether formal or informal as the case may be."

Analysis of First Draft

In the coming series of articles this preliminary draft, of the more complete and detailed regulations proposed by the joint committee, will be analyzed and considered one division at a time.

The preliminary draft opens with a run-down on Montana laws concerning juvenile liquor control. The second division sets forth the proposed rules, defining them without proposing a method of enforcement. Thirdly, the report defines the penalties and procedures, and in the fourth section, outlines the honor system manner of enforcement. The fifth division concerns itself with a slightly different field, it includes all-round student manners and will be completely under student jurisdiction.

Singing Sergeants . . .



United States Air Force.

The official chorus of the United States Air Force Band, the Singing Sergeants, will present five numbers at both the matinee and evening concert. Capt. Robert L. Landers is the director of the 25-member Singing Sergeants, of radio and television fame.

Both concerts will include arrangements by Floyd Werle of Billings, one of the arrangers for the band and the brother of Arlene Werle, Billings, '55 MSU music graduate. Werle graduated from Billings high school and attended college in Michigan before joining the Air Force band.

Both concerts will feature marches, novelty tunes, traditional favorites, popular songs, and semi-classical selections.

Future Results of Pledging May Injure Frat System

Speculation remains high today as to the possible consequences of last week's wide distribution of pledges going into MSU's eight nationally-affiliated fraternities.

Out of 136 men accepting bids, ATO pledged only one man, Bill Johnson, Lewistown, and Johnson withdrew his pledge yesterday. An ATO spokesman, however, told the Kaimin last night his house had "no intentions" of closing their doors.

Interfraternity president Wayne Linnell, Sunburst, explained that the loss of one fraternity would hurt all others on campus. He said, however, that Interfraternity council would probably be able to do little to assist the ATO's.

Fraternity pledges by home towns:

Phi Delta Theta: Belt — Leonard Mee. Billings — Jack Blehm, Herb Caraway, Leroy Corning, Dick Christensen, Don Freter, Ritch Mitchell, Orville Metzger, Steve Peterson, Don Reiter, Gary Schroeder.

Chinook — Ken Kuhr, E. L. Luckett. Dagmar — Darrell Lindberg. Darby — Jet Bibler. Glasgow — Rick Benson. Glendive — Robin Robins. Great Falls — Herb Foster, Ken Gue, Don Moe.

Havre — Jim Sedivy. Helena — Jim Bresland, Bob Bruce, Bob Davis. Kalispell — Larry Linberg. Lewistown — Bruce Baker, Don Brickley. Missoula — Bill Craw-

Independents Schedule Dance in Lodge Monday

The Independent Student association will sponsor a dance Monday evening in the Yellowstone room of the Lodge beginning at 8 o'clock.

Independent president Bruce Cook announced that there will be a short business meeting starting at 7:30 p.m. The dance will end at 10 p.m., and all students are invited.

CHEERLEADERS' SESSIONS SCHEDULED SATURDAY

Cheerleaders' practice sessions will be held Saturday at 12:30 p.m. on the second floor of the Lodge, according to JoAnn LaDuke, Ronan, chairman.

Upperclassmen, as well as freshmen, are encouraged to try out for the cheerleading positions. Candidates will be given instruction and help by former cheerleaders.

Final selection will be Tuesday, Oct. 3, at 4 p.m. in the Lodge. Traditions board members will make the selection.

Nearly 50 turned out for Tuesday night's practice session.

ford. West Glacier — Kay Sander-

son.
California: Long Beach — Dave Magee. Salinas — Tom Jenkins. San Francisco — Tulie Barnum. Washington: Pullman — Clayton Dunne, Allan Hughes. Wisconsin: Centralia — Kes Skoog. Milwaukee — Kard Pierce. Whitefish Bay — John Pinter. Virginia: Arlington — Jim Hutchison.

Phi Sigma Kappa: Baker — Ted Everson, Steve McClain. Butte — George Trickey. Missoula — Ernest Hunton.

Sigma Alpha Epsilon: Billings — Gerald Kemp, Armand Lohof. Fort Benton — Sam Ragland. Frenchtown — Karl Borchers. Great Falls — Charles Hatfield. Harold Peklewsky, Jack Sprague. Hamilton — Fred Roberts. Helena — Phil Mooney. Laurel — Jerry Geise, Livingston — Gerald Ashmore, Rolland Boe. Missoula

(Continued on page six)

Activity Cards Available Today

Student Activity cards may be obtained today from 9 a.m. to 5 p.m. upstairs in the Lodge. The activity cards will serve for all activities throughout the school year.

Students unable to pick up their cards today may be admitted to the football game tomorrow by showing their fee receipts, Bob Gillyuly, Glasgow, chairman of Traditions board, has announced. Students who have not had their pictures taken may have them taken in the Lodge today.

Students attending the game Saturday are requested to go from the track through the stands rather than through the back way, Gillyuly said.

Student's wives may obtain activity cards at the General Accounting office. These cards will entitle them to all campus activities except the Kaimin and Sentinel and the privilege to vote in school affairs.

EDITORIALLY . . .

Introductions Are Completed

We're as happy as nine-dollar grass seed to be bringing you this second issue of the 1955-56 Montana Kaimin. Already we have big plans for the editions that will be coming along next week and during the next two quarters.

Yesterday we asked for student support. Now we'll mention the services we hope to give in return.

Today there is only one problem demanding more coffee-shop conversation than beating BYU—the outcome of the administration's clean-up drive on alcoholic consumption by students.

A Share Was Given

Last spring ASMSU asked for a share in solving this problem. President McFarland agreed to meet with a student committee during the summer. Now the findings are being released for the student body. The Kaimin will bring you these results for your discussion starting today and running in serial-form through part of next week.

In addition to this job of interpreting student affairs, the Kaimin has always felt proud to represent the various segments of MSU's population. We welcome letters to the editors. We only ask that they be under 250 words and be signed by the writer. Names will be withheld upon request.

As this column mentioned yesterday, our fourth goal is to offer alternatives to our readers. It is our contention that this is also one responsibility of a university. We have experts on this campus from nearly every field. We hope to interview them often during the next two quarters and pass along their wisdom.

Smile . . .

We feel that much of this school's inferiority complex can be cured if credit can only be given where credit is due—no lies will even be necessary. We are highly optimistic as we start this school year and hope we can rub some off on the rest of the student body.

Be it politics, morals, recreation, agriculture, religion, or any other campus activity the Kaimin will try to be on the spot. And thus ends our two-day introduction.

Kim Forman, Editor

The Montana KAIMIN

Established 1898

Published every Tuesday, Wednesday, Thursday, and Friday of the college year by the Associated Students of Montana State University. Represented for national advertising by National Advertising Service, New York, Chicago, Boston, Los Angeles, San Francisco. Entered as second-class matter at Missoula, Montana, under Act of Congress, March 3, 1879. Subscription rate \$3.00 per year.

Printed by the University Press

55

Member

Montana State Press Association
Member, Rocky Mountain
Intercollegiate Press Association

Editor, Kim Forman; Business Manager, Virginia McBride; Campus Editor, Ron Erickson; Feature Editor, Joan Hoff; Photographer, Don Dooley; Circulation Manager, Dave Nelson; Faculty Advisor, E. B. Dugan.

WANTED Men and Women

Distributors for
Nationally Advertised Product
YOUR OWN PART-TIME
BUSINESS

- \$7 per hour national average
- 72% repeat business
- Retirement plan
- Free training and group meetings
- Low initial investment and possibility to sell business for cash any time.

PHONE 9-1887
7-9 p.m.
427 Ford Street

Library Annex Work Resumed

Work on the new addition to the library has been resumed. It was brought to a near standstill during August when the steel wall paneling used in construction failed to be delivered. If all goes as planned the addition, which will double the seating capacity of the present library, will be in operation by winter quarter.

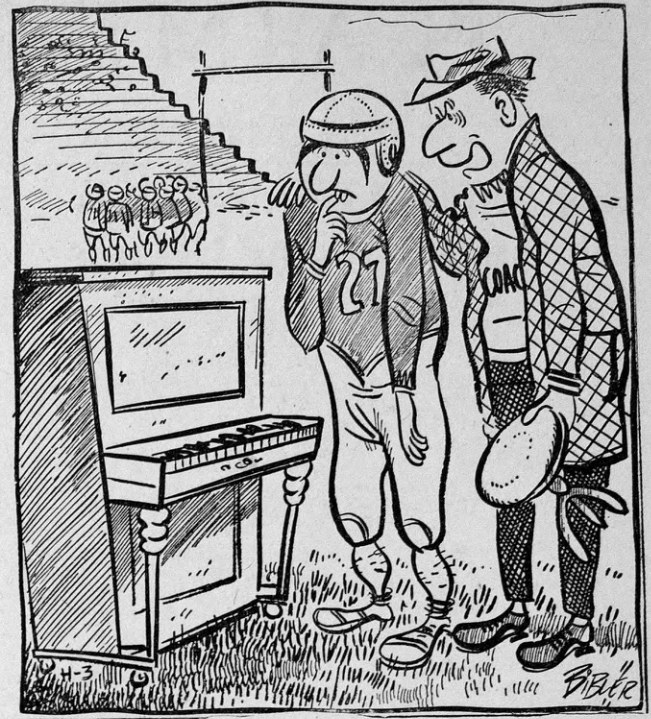
While construction is in progress the main part of the library will be open during the following hours: 8-12, 1-5, 7-10 Monday through Thursday; 8-12, 1-4:30 Friday, and 2-5 on Sunday. Professional staff members will be on duty to assist students with their work, according to Kathleen Campbell, head librarian.

Although the regular loan desk has been closed, students may obtain books reserved by faculty members at a circulation desk set up in the east end of the reading room. Rooms 102, 103, and 118-119 on the main floor will be open to supplement the large reading room on the second floor.

Stacks still open to faculty members will be completely closed to all personnel beginning the middle of next week. Since the stacks will be closed, faculty members have been requested not to require term papers for this quarter.

Little Man on Campus

By Dick Bibler



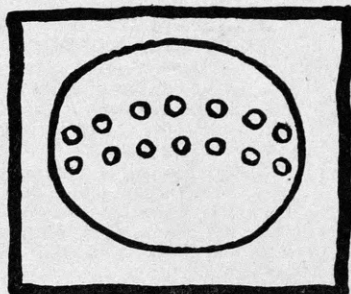
"I promised you could play during th' last half an' I want you to know I'm a man of my word."

STUDENTS! IT'S LUCKY DROODLE TIME AGAIN!

Got a Lucky Droodle in your noodle?

Send it in and

MAKE \$25



BOWLING BALL
FOR CENTIPEDE
Ann Bosler
Sarah Lawrence



BLANK VERSE
John Vancini
Boston College

Hundreds and hundreds of students earned \$25 in Lucky Strike's Droodle drive last year—and they'll tell you it's the easiest money yet.

Droodles are a snap to do—just look at the samples here. Droodle anything you want. Droodle as many as you want. If we select your Droodle, we'll pay \$25 for the right to use it, with your name, in our advertising. And we always end up paying for plenty we *don't* use!

Send your Droodle, complete with title, to Lucky Droodle, P. O. Box 67A, Mt. Vernon, N. Y. Include your name, address, college and class. Please include, too, the name and address of the dealer in your college town from whom you buy cigarettes most often.

While you droodle, light up a Lucky, the cigarette that tastes better because it's made of fine tobacco . . . and "It's Toasted" to taste better.

DROODLES, Copyright 1953 by Roger Price

"IT'S TOASTED" to taste better!

© A. T. Co. PRODUCT OF The American Tobacco Company AMERICA'S LEADING MANUFACTURER OF CIGARETTES



FLASH! COLLEGE STUDENTS PREFER LUCKIES

Luckies lead all other brands, regular or king size, among 36,075 college students questioned coast-to-coast. The number one reason: Luckies taste better.

**SCHOOL'S OLDEST ALUM
IS DEAD AT 83**

At the age of 83, MSU's oldest alum, Charles Earl Avery, died Wednesday, Sept. 28, in Anaconda.

Attending the "U" from 1895 to 1900, Avery was graduated in 1900 with a Ph.B. (bachelor of philosophy) degree. Born on

**THREE SKYLINE GAMES
SCHEDULED SATURDAY**

In Skyline play this weekend Montana Grizzlies host Brigham

June 25, 1872, in Galena, Ill., Avery was, before his death acting president of the Hawthorne Literary club. His son Earl Avery is living here in Missoula.

Young; Denver Pioneers, last years conference champions, play the Colorado A&M Rams, and the Utah State Aggies meet the Wyoming Cowboys at Laramie.

Utah, favored to win the Skyline title this year, moves into Big Seven territory Saturday the underdog, as they play Missouri. Other nonconference action sees New Mexico at Texas Christian.

**SALES INDICATE
SELLOUT CROWD**

"From indications at this time, Saturday night's game with BYU should be a near sellout," according to Bob Dundas, campus auditor. The tickets are moving rapidly and there are only a few reserved seats left.

Season tickets for the four home games are selling at approxi-

FAMILY HOUSING FILLED

University students wishing to live off-campus winter quarter are asked to put in their applications, it was announced by the Family Housing department yesterday. All family housing facilities for this quarter have been filled.

mately the same speed as last year, Dundas said.

Dr. Norman Ch'in

...in petroleum, too, everything but the pig's squeal

"I HAVE READ that in a free country, business is more efficient because it must compete successfully to survive.

"I believe this sincerely. For I lived in China, India and Europe before becoming a United States citizen seven years ago. No one equals Americans for sheer ingenuity in finding better ways to do things.



"I am thinking, for instance, of how at Union Oil today we use—as they say in the meat-packing industry—'everything but the pig's squeal.'

"Sulfur is a good example" of what I mean. At the start of the Korean War the government put it on top priority.

"Curiously, though, one of the waste products of petroleum refining is a form of sulfur—hydrogen sulfide. We were convinced that we could convert enough throw-away hydrogen sulfide into valuable elemental sulfur to make a special plant worth while. We put it up to management and got a go-ahead.



DR. CH'IN: "NO ONE EQUALS AMERICANS IN FINDING BETTER WAYS TO DO THINGS."

"Our project was a success. We now recover about 120 tons of sulfur a day. It was good citizenship, too. Because by creating a new supply of sulfur we're helping to conserve the country's natural resources.

"All this from material once thought the refuse of refining! See what I mean by the ingenuity of us Americans?"

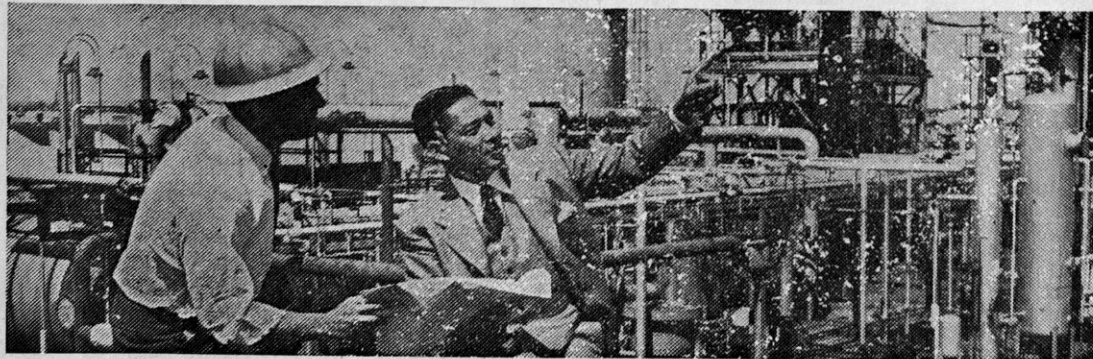
* * * *

Typically modest, Dr. Ch'in does not mention he was process engineer of the original Sulfur Recovery Unit at our Los Angeles Refinery.

This was one of our first steps in diversifying our business through chemical by-products of refining.

But Dr. Ch'in's original point is most pertinent. For it is possible that none of these things would have happened, if we lacked the incentive to find new ways to do a job more efficiently than our competitors.

YOUR COMMENTS ARE INVITED. Write: The President, Union Oil Company, Union Oil Bldg., Los Angeles 17, Calif.



Union Oil Company OF CALIFORNIA

MANUFACTURERS OF ROYAL TRITON, THE AMAZING PURPLE MOTOR OIL

Grizzlies Set for Tussle On Dornblaser Against BYU

By JOHN BANSCH

The 1955 edition of the Montana Grizzlies and their new coach, Jerry Williams, will be unveiled to local fans tomorrow evening at 8 p.m. when they entangle with the Brigham Young Cougars.

In Brigham Young, the Grizzlies will face a big aggressive ball club that has won one and lost one for the 1955 season. Two weeks ago they were defeated by Oregon State, and last Saturday they ran over Los Angeles State 33-0.

This will be the eighth meeting between the two clubs, with BYU holding a 5-2 edge in victories. Montana's two victories came before joining the Skyline conference. Montana's biggest margin of victory came in 1949 when the Grizzlies won 25-6, and BYU's biggest margin was in 1952 when the lads from Provo won 28-7. Last year Brigham Young won 19-7 in the regional TV game of the week.

The Silvertips have been working long and hard this week in order to prepare for tomorrow evening's tilt on Dornblaser field. New plays have been added to MSU's roving T offense, along with trying to tighten up the forward wall after the second half falter against Wyoming.

Brigham Young will have two high-stepping backs to be matched against Montana's Dale Shupe, leading ground gainer for the Grizzlies. Legrand Young, sopho-

more back, turned in the top performance against L.A. state, when he scored three touchdowns in the first 16 minutes of play. Running along side Young will be scatback Phil Oyler. Oyler, a returning starter for Coach Chuck Atkinson's Cougars, is a shifty runner who is dangerous on punt and kickoff returns.

The Grizzlies will be showing off their new uniforms for the first time to the local fans tomorrow night. The uniforms are of solid gold with copper stripes on the pants and around the shoulders of the jerseys. New gold helmets have been ordered and if they are in before game time they will be used, otherwise the maroon headgear from last year will be worn.

BYU is strengthened by the return of five ex-servicemen plus 15 letter winners from last year. The fact that the Cats are rebuilding does not mean that they will be weak sisters for anyone this season.

The boys from Provo will mainly operate from a split-T, with some straight-T plays. With last week's game being played in the mud, the Cougars could not throw the ball, but Bob Olson does most of the passing for them when they take to the air.

BYU is looking for a replacement for halfback Roy Jones who will be out for the season due to an injury sustained in the game with Los Angeles state, but other-

WINNING YANKEES MOVE INTO EBBETS FOR THREE

After taking two straight wins from Brooklyn, the New York Yankees will move from their home in Yankee Stadium to the confines of Ebbets Field in Brooklyn for the third game of the series today.

The third and fourth games of the series will be played in Brooklyn, along with a fifth game if it is necessary. If a sixth and seventh game are needed, they will be played in Yankee Stadium.

Bob Grim, Bob Turley, and Dop Larsen are expected to pitch for the Yankees in Brooklyn, while Johnny Podres is expected to work today's game for the Dodgers. Manager Walter Alston will not divulge his pitching choices for after today until game time, but it appears Carl Erskine will work Saturday's game for the Brooks.

PROGRESSIVE PARTY HIGHLIGHT OF WEEK

A highlight of orientation week was a progressive party sponsored by the residence halls Sept. 21. The party consisted of a dance at South hall, conducted tour of Jumbo and Craig halls, entertainment at North, group singing at Corbin and refreshments at New hall. Approximately 200 students participated in this first party of its kind held on campus.

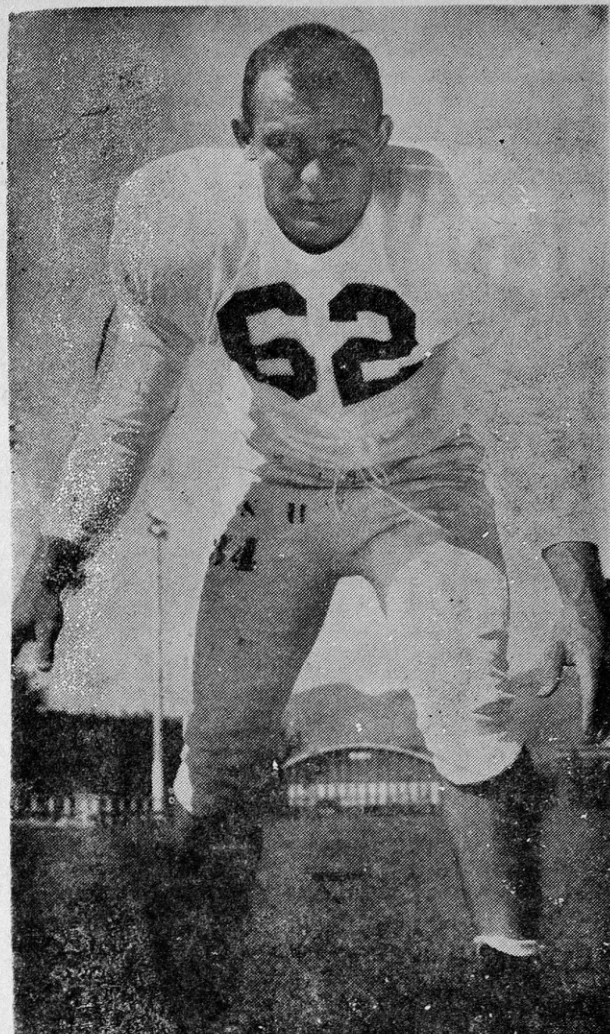
SPORTS BOARD TO MEET

Intramural sports board will meet Friday at 4 p.m. in the Physical Education department to discuss the fall quarter program.

Intramural director Eddie Chinske said that officials for the touchball games are needed. Six officials are needed each day and the pay is \$2 a game.

wise they will be at top strength for Saturday's fray. Dale Shupe is still a doubtful starter for the Silvertips due to a bruised knee, but Jerry Williams adds, "We are hoping that Shupe will be able to go."

READ THE KAIMIN CLASS ADS



The "Bear," as he is known by his teammates, is one of the roughest guards in the Skyline conference. Doug is the only veteran guard on this year's squad, and much is expected of him this season. Last year he was voted the outstanding lineman on the field in the Montana-BYU regional TV game of the week. Weighing 187 pounds, Doug is one of the lightest guards in the conference and is considered by many sports writers the best defensive guard in this area.

MONTANA	Pos.	BYU
Mading	LE	Neel
Gehring	LT	Powers
Dasinger	LG	Weenig
Small	C	Anae
Strand	RG	Earp
McGihon	RT	Leavitt
J. Johnson	RE	Verbantz
Bray	QB	Olson
Williamson	LH	Oyler
Shupe	RH	Stolworthy
Milne	FB	Young

50 million
times a day
at home, at work
or while at play

There's
nothing
like a

Coke

DRINK

Coca-Cola

1. SO BRIGHT . . . so right for you . . . so tangy in taste, ever-fresh in sparkle.
2. SO BRACING . . . so quickly refreshing with its bit of wholesome energy.

BOTTLED UNDER AUTHORITY OF THE COCA-COLA COMPANY BY

COCA-COLA BOTTLING COMPANY OF MISSOULA
"Coke" is a registered trade-mark. © 1955, THE COCA-COLA COMPANY

Symphony in the Sky

THE UNITED STATES
AIR FORCE BAND

Washington, D. C.

"INTERNATIONALLY ACCLAIMED"

COLONEL GEORGE S. HOWARD
Conductor



★ ★ TALENTED SOLOISTS ★ ★

FAMOUS "SINGING SERGEANTS" Directed by Captain Robert L. Landers
TRULY GREAT MUSIC BY A GREAT BAND

Montana State University Field House

Friday, September 30—3 p.m. and 8:15 p.m.

Adults \$1.00 — Students 50c

1937 Grizzlies Rated One of Five Major Football Teams in Nation

By GENELL JACKSON

When oldtimers gather at Homecoming next week end to talk over the days when they carried the MSU colors, the class of '37 can puff their chests with an extra bit of pride.

That was the year the Grizzlies won seven and lost one. Although they belonged to the Pacific Coast conference, the games were not played with conference teams, so they didn't earn a loop title.

'Other teams around the league knew we were going to be pretty powerful, even a year in advance,' Jiggs Dahlberg recalls. "When they met to draw up the 1937 schedules, Montana was left in the cold."

But even so, the Grizzlies managed to gain national recognition for their gridiron feats. It was Dahlberg's first year as a Grizzly coach, assisting Head Coach Doug Fessenden with the line. Harry Adams, now track coach, handled the backfield, and this trio had one of the greatest aggregations of grid talent ever gathered on a Montana campus.

"Popo" Spearheads

Leading the group was Milt Popovich of Butte, a left-halfback high on the list of all-time Grizzly greats. The speedy back captained and spearheaded his teammates throughout the season and was given a first-team berth on the All-Pacific coast squad. He was also a leading candidate for All-American honors.

Another all-time great was Will Lazetich, a back from Anaconda. Paul Szukah rounded out the "Popo-Lazo-Soco-TD-trio." Others playing on the "star studded" squad included Bill Mastasovic, Aldo Forte, Johnny Dolan, Fred Jenkin, Chuck Williams, Monk Gidgoud, Joe Pomajavich, Archie McDonald, and Leonard Noyes—all names that make old-timers glow with pleasant memories.

To give a brief recap of that "greatest of seasons," the Grizzlies opened their play against Whitman with a 25-0 victory. They then traveled to Lubbock, Tex., where they downed Texas

Tech 13-6. Oklahoma City university was next, and they were trounced 36-6 before a Great Falls audience. The San Francisco Dons fell 13-7 to Grizzlies on the Butte field. Montana State college took a 19-0 beating—also in the Mining City. Gonzaga lost 23-0 on Dornblaser field.

By Nov. 9, 1937, the Grizzlies were one of the five major undefeated teams in the nation. They had jumped to an all-time high on the power rating polls. Their next game was with Idaho, and the Grizzlies were picked to win easily.

But something happened. They came off the field tasting a bitter 6-0 defeat. Their final game was with North Dakota, and the MSU crew won 14-3.

Receive Bid

Despite their loss to Idaho, the Grizzlies received a bid to play Texas Tech in the Sun Bowl on New Year's day. Students were jubilant, for it looked like the Grizzlies would have little trouble again downing the Raiders. Coach Fessenden said it was up to the boys to accept or reject the bid.

The team held a closed meeting with the athletic board. Behind the closed doors, they decided to conclude their season at that point.

So ended one of the most brilliant seasons in Grizzly history. There's little doubt that Nick Mariana, Joe Lindgren, and dozens of undergraduates at that time, who are still prominent in Montana sports, will have plenty to talk over when they meet next week.

Skirts 'n Sports

Player lists are being circulated in women's living groups for the forthcoming volleyball round robin and tournament.

Drawings will be held Oct. 3 and the play will begin Oct. 8, 4 p.m. in the Women's Center.

All girls interested in playing are asked to contact their living group sports manager as soon as possible.

Guides Grizzlies



JERRY WILLIAMS
MSU Football Coach

Prospects Report For Cub Practice With Coach Zilly

Forty-seven freshmen, including 21 out-of-state prospects began practicing yesterday afternoon under the direction of their coach, Jack Zilly.

All of the positions on the team are wide open, and Zilly said, "last year's performances will not win them starting spots for this year."

The candidates are: Montana Bockman, Dan Magstadt, Joe Phelps, Jack Seitz, Willie Hockhalter, and Bob Zucconi, from Missoula; Don Brickley, Richard Christensen, and Lanny Gorman, Billings; Stan Renning, Robert Smith, and Stan Tiffany, Great Falls; Ken Ducharme, Don Dupuis, and Ken Ross, Polson.

Other Montanans include: Mark Dasinger, Wolf Point; Orville Goss, Browning; Loren Henry, Lewistown; Carl Hillard and

MSU Co-ed, Ardent Dodger Fan, Has Personal Buddies With 'Bums'

Barbara Mellott, Hamilton, is following the world series with a bit more interest this year. And the added enthusiasm dates from her trip to the national Theta Sigma Phi, women's journalism honorary, convention in St. Louis last summer.

But to start at the beginning. Miss Mellott was standing in the lobby of the Chase hotel in St. Louis, a bit perplexed. There had been some mix-up in her room reservation application, and she found herself without a room.

A fellow journalist came to her rescue. He turned out to be a reporter with the New York World-Telegram and was traveling with the Dodgers. He used his influence to get her a room in an adjoining hotel and also informed her that the "Bums" were also registered at the Chase.

Later, while in the dining room, the MSU co-ed noticed several "broad-shouldered, good-looking men" at a nearby table. She thought they must be important men—maybe even Dodgers.

Her hunches were soon con-

firmed when a youth asked the men for their autographs. She got some autographs herself. Later, while in the lobby, she saw three of the players.

Poses for Picture

Like a true journalism major, she wandered over and began to make conversation. She asked one of the men—Jackie Robinson—if she might take his picture. But she had no flash bulbs. Barbara suggested trying a time exposure, but Robinson said nix, led her outside, and posed for pictures.

The other two were equally famous—Don Newcombe and Roy Campanella.

"They were all so nice I had a hard time realizing they were famous men," the MSU senior commented.

In fact, Barbara never realized the extent of their fame until she returned to Montana and was relating her experiences to her brother-in-law. It was then that she learned of the power of Newcombe's pitching and the outstanding ability of Campanella behind the plate. She had heard of Robinson, "but then who hasn't," she laughed.

One thing is for sure, however. Barbara is pulling for those under rated Bums from Brooklyn. She lost a dime on them yesterday.

Fall Practice Slated For Grizzly Tennis

The first meeting of prospective Grizzly tennis players was held yesterday, during which the plans for fall practice were outlined by Coach Bob McDole. According to the new coach practice will begin next Monday at 4 p.m. on the University courts. All new aspirants for varsity tennis are urged to contact McDole during one of the practice sessions or in Room 345D, Craig hall.

Among last year's varsity veterans who attended the Thursday meeting were Stuart Gallagher, Jim Kelly, Len Peklewsky, and Jim Andrews. Newcomers included McDole, Art Hoffer, and Jay Quattrochi.

When your courses are set
And a dream-girl you've met...
Have a real cigarette—have a CAMEL!

—Man, that's
pure pleasure!

It's a psychological fact:
Pleasure helps your disposition.

If you're a smoker, remember
—more people get more
pure pleasure from Camels
than from any other cigarette!

No other cigarette is so
rich-tasting, yet so mild!



Camel



Students Engaged, Pinned, Wed During Past Summer

By NORMA BEATTY

Dan Cupid really worked overtime this summer as 30 weddings, 10 engagements and seven pinnings have been announced on the MSU campus.

Married

Rosemary Aker, AP, '56, Kalispell, and Joe Hilstead, SAE, '56, Kalispell.

Pat Woodcock, KKG, '54, Great Falls, and Dick Bergsing, SN, '57, Livingston.

Janet Bailey, KAT, '55, Red Lodge, and John Earl, SAE, '55, Great Falls.

Creta Stucky, DG, '55, Las Cruces, N.M., and Bob McGuire, SAE, '55, Stanford.

Norma Jean Wadsworth, SK, ex-'57, Red Lodge and Bob Pelo, PDT, '56, Red Lodge.

Connie Jensen, Hamilton, '57, and Monte Brammer, SAE, '56, New Castle, Ind.

James Mason, ATO, '58, Lavina, and Eva Negu, ex-'58, Shelby.

Dian Giulio, AP, '55, Helena and Bob Hutchins, TX, '55, North Bend, Ore.

Molly McCullough, KAT, ex-'58, Missoula and Jack Fahey, SX, ex-'56, Lakeside.

Joan Brooks, DG, '55, St. Ignatius, and Marsh Murray, SAE, '56, Kalispell.

Elaine Baker, Denver and Steve Olstead, PDT, '55, Big Timber.

Trilby Horrigan, DDD, ex-'57, Philipsburg, and Dean Neitz, Philipsburg.

Charlene Spicher, AP, '58, Hinsdale, and Doug Bibler, PDT, '56, Darby.

Verna Johns, AP, '55, Great Falls, and Jack Kessner, Great Falls.

Tina Stohr, KAT, ex-'56, Missoula, and Doug Delaney, SX, '55, Missoula.

Pat O'Hare, AP, '55, Stevensville, and Weston Rhoades, '56, Stevensville.

Dona Woodard, KAT, '55, Billings, and Don Wester, SX, ex-'56, Glendive.

Jere Lee Rivenes, DG, ex-'56, Scobey, and Milton Gunderson, Scobey.

Donnie Steeves, AP, '58, Powell, Wyo., and Rollie Grotte, SX, '55, Hamilton.

Ann Thompson, DG, '55, Kalispell, and Bob Beaman, Kalispell.

Kay Hudson, KAT, '54, Rapid City, S. D., and Lt. John Raymond Melanson, Los Gatos, Calif.

Kenette Kenison, DDD, '54, Dillon, and B. J. Smith, PDT, '54, Stevensville.

Janice James, AP, '56, Kalispell, and Larry Ellefson, SX, '56, Hamilton.

Dorcas Snyder, KAT, '55, Chewelah, Wash., and Miles O'Connor, SN, '55, White Sulphur Springs.

Norma Hafferman, AP, '56, and Steve Sanders, SX, '55, Missoula.

Annemarie Beatty, KAT, '52, Billings, and Joel Roth, SAE, '51, Helena.

Annamae Kovatch, AP, '56, Conrad, and Ted Cogswell, SAE, '55, Great Falls.

Susan Travis, KAT, '54, Havre, and Richard Galloway, Princeton, '54, Calgary, Alta.

Nancy Harmon, AP, '58, Kalispell, and Don Franklin, Kalispell.

Juanita Huffman, KAT, '56, Sidney, and Leon Houghlum, '55, Sidney.

Engaged

Bernice Schutrop, KKG, '57,

Billings, is engaged to Tom Nelson, SX, '56, Great Falls.

Sandy Cooney, KKG, ex-'57, Butte, is engaged to Dick Keihl, PDT, ex-'56, Missoula.

Pat Bender, KAT, ex-'58, Butte, is engaged to Harvey Casebeer, Butte, pre-med student at Stanford.

Cynthia Boyd, KAT, '58, Billings, is engaged to Reed Smith, Salt Lake City, Utah.

Pat Lyle, ex-'57, Fort Benton, and Nile Aubrey, SN, '58, Cut Bank, are engaged.

Lois Stebbins, Missoula, is engaged to John Dundas, SAE, '56, Great Falls.

Ruth Franz, DDD, '56, Kalispell, is engaged to Joe Sliter, Alpha Delta at the University of Washington, '56, Kalispell.

Kay Wohlgenant, DDD, '56, Miles City, is engaged to Bob Newlin, SN, '55, Lewistown.

Ellene Ishmael, Synadelphic, '58, Ronan, is engaged to Dale Brandt, Rudyard.

Marilyn Leary, KAT, '56, Butte, and Ed Nelson, '58, Whitefish, are engaged.

Pinnings

Barbara Seal, New Hall, '57, Bozeman, is wearing the Phi Delt pin of Charles Hoffman, Helena.

Carol Peterson, DDD, '57, Lewistown, is pinned to Jack Leslie, SAE, '56, Stanford.

Bev Dale, DDD, '56, Saskatchewan, Can., and Andy Anderson, PSK, '57, Fort Benton, are pinned.

Marilyn Osher, DG, '59, Polson, is wearing the ATO pin of Jack Lind, '56, Polson.

Val Gierke, DG, '56, Watford City, N. D., is pinned to Pat Eyer, SAE, '54, Billings.

Gerald Nelson, ATO, '57, Wolf Point and Mary Lou Zimmerman, '55, Billings.

Fraternity Rush

(Continued from page one)

—Gerald Livessy, Ed Tilzey.

Red Lodge—Bob Colness, Jerry Nordstrom. Stevensville — Don Wright. Idaho: Salmon—Glen McGivney. Indiana: Prospect Heights—Jim Knaus.

Sigma Chi: Anaconda—Arnold Hageman, Jim Kunkel. Billings—Tom Chakos, James Fergus, Dan Hoffman, Dick Josephson, Byron Schatzb, Newton Simmons, Robert Vogel, Dean Wilcox. Kalispell—Jim Hanford, John MacMillan, Stuart Swenson.

Lewistown—Karl Geis, Loren Henry, Jerry Johnson, Larry Pettit. Missoula—Bob Little. California: Alhambra—Henry Greminger. Indiana: Highland—Matt Gorsich, John Gregor. Minnesota: Perham—Louis Hendrick. Texas Midland — Bill Hannon, Carl Yeckel.

Sigma Nu: Billings — Charles Content, Louie Griffie, Larry Pit-tet, Dick Witham. Bozeman — Maurie Farrington. Fort Benton — Charles Lenington. Great Falls — Tom Little, Ed Mattucci, Terry Matteucci, Duane Trekle, Hardin — Bob Ruby. Hobson—Fred Barrett.

Kalispell—Larry David. Missoula—John Hill, Dean Jensen, Dick McCauley, Bill Steinbrenner, Al Walters, Roger Wolter, Max Yandt, Thompson Falls — Jim Smith. Whitefish — Fred Jones, Bruce Swarens.

Canada: Manitoba — Arthur Heffer. Illinois: Chicago — John Anderson. Macomb—Carl Crabb. Washington: Spokane—John Stipe, Yakima—Tony Angland.

Sigma Phi Epsilon: Butte — Darrel Lalanne, Ed Reindle. Cut Bank—Brad Baker, Joe Garrow. Garrow. Frazer — Jerry Collins.

Quest Lindh Appointed Grizzly Growler Head

Quest Lindh, Missoula, was appointed temporary chairman of Grizzly Growlers by the temporary freshman class officers Wednesday night. Over 150 freshmen attended a meeting to organize the Growlers in the Music Recital hall.

Plans to paint the victory cart and shine the bell were approved by the group. The work will begin Saturday noon near the east bleachers of Dornblaser field, according to Bob Gilluly, Traditions board chairman.

Gilluly has asked Growlers to come to Saturday's game at 7:30 p.m. A section near the band will be reserved for those who wear their beanies. If response is good, the section will be reserved for other games.

Glendive—Lewis William. Helena—Tom Schulke. Kalispell — Larry Durado. Polson—Roy Ekstrom. Connecticut: Weathersfield — Geoffrey Wilson. Massachusetts: Somerville—Rick Champoux.

Theta Chi: Fort Benton—Gary Carver, Jack Davison, Ken Willson. Great Falls—Don Ferron. Helena—Dave Dale. Libby — Bill Nelson. Missoula—Dick Hart, Marvin Hart. Superior—Larry Hebbard, Duane Kaurin, Troy — Wayne Schoonmaker.

Canada: Calgary—Greg Urch. Illinois: Chicago — Bob West. Pennsylvania: Ambridge — Ed Kubits.

Classified Ads . . .

LOST: Black and silver Parker 51 pencil, name Gaye Harding. Ph 9-0733. ^{tf}

Sorority Rush

(Continued from page one)

Jo Haines, Beverly Moore, Shirley Moore, Jean Schilling, Mary Ann Whaley.

Polson—Marilyn Osher. Round-up—Kathleen O'Neill. Shelby — Carol Howard. Whitehall — Nona Larson. Colorado: Fort Collins—Janet Whittle. Idaho: Osburn — Cleo Bardelli. Wisconsin: Colfax — Gail Hammer.

Kappa Alpha Theta: Anaconda Ruth Ann Dwyer, JaAnn Phillip. Billings—Susan Cummins, Paula Hastings, Kay Fallon, Jeanne Sanderson. Butte — Margaret Peterson, Great Falls — Polly Hodges, Ardide Sayre. Helena—Shari Anderson, Anne Morrison. Kalispell—Beverly Phillips. Medicine Lake—Janice Stephens.

Missoula — Pat Gynn, Lorna Kaiser, Shirley Thormley. Red Lodge—Karen Whitcomb. Sidney — Kay Huffman. Two Dot—Mary Kay White. Canada: Wetaskiwin, Alta.—Bennie Payne. Illinois: Highland Park — Charlotte Boyesen. North Dakota: Minot—Barbara Smith. Williston — Leila Russell. Minnesota: Moorhead—Judy Diemert, Martha Leverett. Texas: San Antonio—Mary Dahlberg.

Kappa Kappa Gamma: Billings — June Bowman, Joanne Jensen, Patricia Robinson. Broadus — Louise Pemberton. Butte—Sharon Cooney, Sheila Sullivan. Great Falls — Carole Domke. Helena — Kathryn Fox, Peg Marlow, Sidney O'Malley, Pat Stewart. Miles City—Betty Barovich, Helen Raymond.

Missoula—Lynn Castle, Barbara Clark, Cyra Taillon, Janet Thornton. Plains—Kathryn Johnson. Arizona: Tucson—Courtney Crowder. Haiti: Port-au-Prince — Tempie Brown. Idaho: Smelterville — Marianne Koskimaki. Saudia Arabia—Sheila Harrison. Washington: Seattle—Nan Bovington.

Sigma Kappa: Butte—Jacqueline Greenough, Roberta Lazzari. Denton—Jackolyn Mossey. Great Falls—Marcia Peterson, JoAnn Tesarek. Hingham—Marcella Kocar. Martin City—Marie Baeth. Idaho: Gooding—Georgia Allen. Pocatello—Sondra Sharpe.

NOTHING IN ITS FIELD CAN MATCH CHEVROLET FOR ACCELERATION!



Great Features back up Chevrolet Performance: Anti-Dive Braking—Ball-Race Steering—Out-rigger Rear Springs—Body by Fisher—12-Volt Electrical System—Nine Engine-Drive Choices.

When you need a quick sprint for safer passing, this V8 delivers!

It's pure dynamite, and you have to go way, way up the price ladder before you ever find its equal.

The proof was burned into the sands of Daytona Beach at the NASCAR* trials earlier this year. In acceleration tests, Chevrolet walked away from everything else in its field. Plus all the high-priced cars except one!

It's the big reason Chevrolet's been taking all comers in short track stock car events this season. Sizzling acceleration along with handling ease and cornering ability—things that mean safer, happier highway driving. Come on in and let a new Chevrolet show you what we mean.

*National Association for Stock Car Auto Racing

NOW'S THE TIME TO BUY! LOW PRICES—BIG DEALS! ENJOY A NEW CHEVROLET

Drive with care . . . EVERYWHERE!



See Your Chevrolet Dealer

THE LIQUOR PROBLEM

PRELIMINARY DRAFT OF RULES AND PROPOSALS BY STUDENT-FACULTY COMMITTEE

9/29/55

I. STATEMENT OF REASONS AND POLICY

Every member of the faculty as well as the administrative officers of the University take an oath, annually, not only that they will support the laws of the State of Montana, but also, "by precept and example, promote . . . reverence for law and order." The State Board of Education, too, is authorized to provide for the government of the affairs of the University only "subject to the laws of the state." On the subject of liquor, these laws not only forbid anyone to "give or otherwise supply liquor to any person under the age of twenty-one years" but also forbid anyone "to permit any person under that age to consume liquor." Still another statute imposes penalties upon "any person who invites a minor into a public place where liquor is sold and treats, gives, or purchases liquor for such person."

The student body at Montana State University is made up in large part of minors. The full spirit of the law will be enforced by the University on its own part as well as in cooperation with law enforcement officers and agencies; and it is impracticable to enforce it as to some students without applying it to all persons participating in campus, living group, and organizational activities. The following University rules are an attempt to meet the necessities and equities of the situation.

While the following do not purport to govern consumption of intoxicating liquor by individual students off campus in all cases, such exceptions are not to be taken as a direct or implied approval thereof for the University. Frequently such conduct leads to infractions of other rules and policies of the University, in which case such use of intoxicants is weighed against the student involved. There are, moreover, social standards or ethics to be observed in such cases by, and as the peculiar responsibility of, the student organizations themselves (see Addendum No. 2 hereinafter).

II. DEFINITIONS

1. Liquor means either possession or consumption of intoxicating beverages (including all wines and beers) the sale of which to minors is prohibited by the laws.

2. University affiliated or recognized student organizations includes all organizations which emphasize student membership, claim University affiliation as by inclusion in student publications or student organization lists or are permitted privileges under University rules such as that students may live in their quarters.

3. Other words and phrases are to be interpreted in their ordinary meaning and to effectuate the policy and purpose of these regulations.

III. PROHIBITIONS

1. Liquor is prohibited on the campus or University property wherever located (except in family dwellings on University property when no students who do not reside in such dwellings are present).

2. Liquor is prohibited as to all participants at social or other affairs or gatherings of any University affiliated or recognized student organizations wherever held and whether or not such gatherings are formal, informal, planned or as guests of any other student or non-student party or organization; and the following are designed to effectuate this firm rule: No such gathering may be held in a bar or immediately opening into or adjacent to a bar or in any place in which liquor is offered or being served or consumed. The foregoing shall not be evaded by the service of liquor in hotel or motel rooms or similar places, or in private homes, to such student participants preceding, during, or following such affairs. The organization concerned, as well as individuals, will be held responsible for the enforcement of the foregoing. All places at which such gatherings are held must be specially approved for the occasion by the Dean or an Associate Dean of Students, who may require written agreement of the management of such places that these rules will be fully honored there and, on a failure to do so, shall not thereafter approve gatherings at such place.

3. Individuals as well as groups of students, staff members, or other representatives of the University are forbidden (a) to escort or accompany to bars or taverns or to offer or supply liquor to, or permit the consumption of liquor by, any high school student visitors or any minor guests of, or visitors to, the University in any of its activities (including athletic contests or tournaments) at any place and at any time of day or night during the period of such visitations or (b) to consume or supply liquor to anyone in the presence of such high school students or any minor, whether University student or otherwise, at any time or in any circumstances.

4. Where liquor is prohibited, these rules require that all persons in possession, or under the influence, thereof shall be promptly excluded. Where the circumstances seem to require and always at athletic events, notices shall be posted to the following effect:

NO LIQUOR

All persons in possession of it or under its
influence will be excluded

The duty to exclude such persons devolves upon all campus police, University staff members, and student organizations as the case may be.

IV. PENALTIES

University affiliation or recognition of organizations violating these rules will be withdrawn, suspended, or conditioned in accordance with the degree of offense, it being understood that the maximum penalty will be applicable in the first, any, and all cases of wilful violation. It will rest in the discretion of University authorities whether in such cases national organizations with which such student organizations are affiliated will, as a courtesy, be given the first opportunity to impose such penalties. Other violators will be denied the privileges of the University and access to Uni-

versity affairs or those of University affiliated or recognized organizations. Student violators will also be dropped or suspended from the University, or have their continuation in the University conditioned, in accordance with the degree of offense.

V. ENFORCEMENT

1. The foregoing will be enforced by the duly constituted University administrative officers and staff (including housemothers and residents of living groups) except to the extent that the student body may set up effective and approved enforcement machinery; and, even in the latter event, the same shall not supersede at any time responsibilities and supervision by such University representatives.

2. Chaperones approved by the Dean or an Associate Dean of Students are required for all social functions, including picnics and firesides, to cooperate with both the organization involved and the University authorities in the enforcement of these regulations.

3. Each approved off-campus living group is required to have a Faculty Adviser, approved by the Dean or an Associate Dean of Students, to make inspections and report to the latter for the enforcement of these regulations unless such group has a resident and approved housemother working closely with the Office of Dean of Students.

4. All other organizations emphasizing membership by University students are required to have a Faculty Adviser, approved by the Dean or Associate Dean of Students, to cooperate with both the organization involved and the University authorities in the enforcement of these regulations.

5. Enforcement of the foregoing includes policing, judgment, and the measuring and imposition of penalties. The first is the responsibility not only of the University but of students and organizations covered by these rules. Such organizations may, to the extent that their actions are effective, enforce these rules themselves but it is their duty, in aggravated or difficult cases, to report them to the Honor Council (see Addendum No. 1 below) or the proper University authorities as the case may be. Students and organizations failing to cooperate in such policing and enforcement may, in appropriate cases, be treated as themselves in violation of these rules. There may be an ASMSU enforcement committee to acquaint businesses, living groups, and student organizations and leaders with the policies and operations of these regulations; the functions of such a committee will be particularly important at the beginning of each fall term.

VI. AMENDMENTS

The foregoing are regarded as minimal rules on the subjects they cover. They may be amended at any time. Their scope and coverage will be increased and enlarged to deal effectively with any loopholes, abuses, or course of conduct which appears to deviate from the stated policy.

ADDENDUM NO. 1 — HONOR COUNCIL

The student body may wish to set up some form of judicial group to function in connection with the execution of these rules, either separately or, as occasion may require, jointly with the regularly constituted administrative authorities of the University. Consideration should be given to the creation of this group in such fashion that the student responsibility for routine and arrangements, incidental to the operation of any judicial body, will be provided and centralized. It is therefore suggested that there be a chairman and two associate chairmen, the three to function as an executive committee as well as otherwise serve as members, of an Honor Council whose other members are selected by (a) each dormitory and other University approved living group, (b) the schools and colleges of the University, and (c) possibly some members "at large". All such members should have scholastic standing of at least 2.5 and should, prior to election, agree not only to accept such a position but to support and promote these rules and the objective of the Council. For each case the Executive Committee would select a panel of five or more members of the Council, although the latter might meet as a whole for policy decisions or other matters of importance. The Dean of Students should be notified of all cases before the appointment of such a panel and have the privilege of (a) naming himself or another faculty representative to sit in as an observer in any proceeding or (b) withdrawing any case from such panel for administrative handling by University authorities. Proceedings should be conducted in "executive" or closed session unless special reason exists for a public proceeding. Decisions of the Council or its panel would be referred to the designated administrative authorities of the University for approval and execution; and the latter will include notification of the students involved, their parents, and other interested University authorities such as the Registrar.

ADDENDUM NO. 2 — SOCIAL STANDARDS

These rules rest upon the premise, among others, that as a matter of good manners at least:

(1) Individual members, of any age, of student organizations (as well as their guests) will not in connection with their student organization affairs patronize bars, transport liquor, or clandestinely consume it.

(2) Such individuals and organizations will not permit it to appear to anyone, in jest or otherwise, that these standards are not scrupulously honored.

(3) The enforcement of these standards will be the special province of the student organizations themselves unless and until it is demonstrated that they are unwilling or unable to achieve a reasonable degree of compliance and appropriate rules are promulgated to supersede these standards in whole or part.