

University of Montana

## ScholarWorks at University of Montana

---

Montana Kaimin, 1898-present

Associated Students of the University of  
Montana (ASUM)

---

10-11-1955

### The Montana Kaimin, October 11, 1955

Associated Students of Montana State University

Follow this and additional works at: <https://scholarworks.umt.edu/studentnewspaper>

**Let us know how access to this document benefits you.**

---

#### Recommended Citation

Associated Students of Montana State University, "The Montana Kaimin, October 11, 1955" (1955).

*Montana Kaimin, 1898-present*. 3136.

<https://scholarworks.umt.edu/studentnewspaper/3136>

This Newspaper is brought to you for free and open access by the Associated Students of the University of Montana (ASUM) at ScholarWorks at University of Montana. It has been accepted for inclusion in Montana Kaimin, 1898-present by an authorized administrator of ScholarWorks at University of Montana. For more information, please contact [scholarworks@mso.umt.edu](mailto:scholarworks@mso.umt.edu).

# THE MONTANA KAIMIN

Montana State University, Missoula, Montana

Volume LVII Z400 No. 7 Tuesday October 11, 1955

## Foresters' Club to Host AWFC Convention in Spring

Preliminary preparations are being made for the convention of Associated Western Forestry clubs (AWFC) to be held next spring in Missoula, with the MSU Forestry club as host.

The honor was accorded the local group at the association's convention last April, at Fort Collins, Colo., according to Dick Behan, Nora, Ind., newly elected president of the conclave.

Officers elected by the MSU Forestry club for the 1956 meeting are: Behan, president; Tom Kovalicky, Clifton, N.J., vice-president; Don Nelson, Livingston, secretary; Roland Saylor, Manilla, Ia., treasurer; Bob Gallup,

Fayette, O., conservation officer; and Art Hollowell, Drummond, contest chairman.

### Daniels Edits Quarterly

Another duty of the host school is the publication of Trail Talk, a quarterly pamphlet put out by AWFC, discussing recent developments in the forestry field as well as covering the news of member clubs. The editor for the current school year is Jess Daniels, Houston, Texas.

Expected to send representatives to this year's convention are University of California, Colorado A&M, University of Idaho, Oregon State college, Utah State, University of Washington, and Washington State college.

Each member school elects one forestry club member to be a vice president of the AWFC, and official delegate to the conclave. He is responsible for representing his school as well as being in charge of his school's delegation. The host school elects the remainder of the AWFC officers.

The highlights of past conventions have been the competitive woodsman events, the winner of which is presented with a traveling trophy. In these events four men from each club vie with the members of other clubs in such sports as wood chopping, log bucking, burling, match stick splitting, and pole climbing.

## Calling 'U'

Math club will meet at 7:30 p.m. tomorrow in Room 109 of the Math-Physics building.

An organizational meeting of Grizzly Growlers, freshman pep organization, will be at 4 p.m. today in LA 104.

Student Christian association will meet at 7:30 p.m. in LA 104. Faculty panel consisting of Dr. duMas, Dr. Ferm, Dr. Fiedler, and Dr. Payne will discuss, "Should Your Religion Undergo Osmosis."

Aquamaid tryouts are scheduled for 7:30 p.m. in the Men's Gym.

Rosary, 7:50 a.m. and 5:10 p.m., Newman club room, second floor, Arts and Crafts building.

Mu Phi Epsilon, actives and pledges, Room 103, Music building, 9 p.m. tonight.

### GRABILL TO INTERVIEW STUDENTS ON JOB PLANS

Dr. Stanton S. Von Grabill, vice president of the American Institute for Foreign Trade will interview seniors interested in "The American Institute for Foreign Trade," on campus today. He will be at the Placement bureau, Room 208, Main Hall.

Appointments for interviews with Dr. Grabill should be made with Mrs. Leona Peterson, Room 208, Main hall.

## IFC Regrets ATO Loss, Aid Was Possible

Speaking for Inter-fraternity council last night President Wayne Linnell, Sunburst, said the council "regrets Alpha Tau Omega has dropped its membership in IFC."

ATO dropped affiliation last week after unsuccessfully participating in the organized rush program under council direction. ATO President Gerald Nelson, Wolf Point, said his house had "refrained from engaging in the mass rushing program save in a superficial way."

Nelson had explained, "Alpha Tau Omega is a club, not a mob. . . . We prefer to pick our members slowly and individually throughout each school year."

The Inter-fraternity president said ATO might have been given assistance if it had brought its problem before the council. "In previous years," Linnell explained, "the council has helped other fraternities by opening the silent period and by other means."

"Had the council been presented the problem by the ATO's," Linnell continued, "there certainly would have been some assistance."

Linnell said IFC was sorry the ATO's look upon the other fraternities as mobs. He pointed out that fraternities and IFC function on this campus much the same as they do in other schools throughout the nation. He could see no advantages in dropping membership but concluded, "We hope the ATO's will succeed in their pledging program as a club."

## CB Approves Larcombe, Weaver As Kaimin Editors

By KAY BLASZEK

Central board approved the applications of Judy Weaver and Bill Larcombe for Kaimin associate editors and rescheduled freshman elections at last Friday's meeting.

Miss Weaver, a junior from Red Lodge, will take over the position of society editor in the vacancy created by Norma Beatty's resignation. A radio journalism major, Miss Weaver worked on the Kaimin staff last spring quarter as a reporter. She is a member of Sigma Kappa social sorority and is a junior sponsor.

The position of sports editor which was vacated by J. D. Coleman will be taken over by Larcombe, a senior from Malta majoring in the news-editorial sequence in journalism. Larcombe was graduated from Breck school in St. Paul, Minn. and worked as a reporter on the Havre Daily News for two summers. He is a member of Phi Delta Theta, social fraternity, and serves as treasurer of Sigma Delta Chi, men's journalism honorary.

Dick Riddle, Libby, freshman elections chairman, announced that petitions weren't being turned in on time so it was decided to reschedule the elections for one week later. The primary will be Oct. 20 and the final election Oct. 27. Deadline for turning in petitions is Oct. 15 and Riddle asks that they be returned sooner if possible.

It was announced that the newly formed liquor committee made up of living group repre-

sentatives and Central Board officers and representatives would meet Wednesday at 3 p.m.

Gary Jystad, ASMSU president, asked all students to check their activity cards for errors, especially in regard to birthdates. If the card contains any error it should be returned to the ASMSU office in the Lodge.

Jystad said the cards will be checked in the near future and turning them in in advance will save officers and students both time and effort.

## Liquor Rule Enforcement Not Solved

By RON ERICKSON

The least profound statement anyone could make on this campus by now is that persons and organizations who violate the prevailing set of rules at this institution will have their University affiliation "withdrawn, suspended, or conditioned."

The very elementary nature of this enforcement seems to represent a typical situation. Those of us who have driven "cars" which through some quirk of hairpins managed to stay in approximately one piece, have found that if you get caught running a red light the jig is up—you not only have to pay 10 or 15 shekels for that, but starting with such items as brakes, lights, etc. the officer will keep adding fines until it costs you bitterly.

Where at one time we used to get away with a little pesky business, now we are apparently arrested and the jig is up.

Students also can be tyrannical beings once they're launched into challenging waters under the sails of justice. Perhaps, if the administration permitted a free student rein from now on out this could still happen.

But enforcement has been delegated to the administrative officers and staff including house-mothers and residents of living groups. The administration also proposes to retain the power to handle special cases when the facts involved should not be spread throughout the student body.

Other means of enforcement are in connection with the dean or associate dean of students who are to require chaperones at all social functions and to keep in close contact with advisers of living groups.

Provisions are offered allowing a judicial group from the student body to function along with the administration authorities.

Whether it will be a tyranny or a search for loopholes remains a mystery.

## From Queen to Queen . . .



Kaimin Photo by Don Dooley  
Homecoming queen of 1954, Marilyn Shope, Missoula, is about to present a toy Grizzly to 1955 Homecoming queen, Sue Garlington, Missoula, as Prof. Robert Sibley, a member of the MSU faculty from 1903 to 1907 (left) and Bob Gilluly, Glasgow, chairman of Traditions board (right) smile their approval. The presentation and coronation were conducted at haltime Saturday.

## Floats, Crowning and Banquets Highlight MSU Homecoming

The 1955 Montana State University Homecoming was termed a "wonderful success" by its chairman, Herbert A. Searles in spite of the outcome of the Grizzly-Denver football game.

Highlights of homecoming included the crowning of Sue Garlington, Missoula, as homecoming queen. Miss Garlington, Delta Gamma sorority's candidate was crowned by Prof. Robert Sibley, honored guest during Homecoming (during half-time ceremonies of the football game. Marilyn Shope, Missoula, 1954 homecoming queen, presented the new queen with a bouquet of roses and a souvenir Grizzly bear.

A huge "Denver sandwich" float, entered by Sigma Chi and Delta Delta Delta, won first place in the living group entries in the homecoming parade Saturday morning. Second place was awarded to the Phi Delta Theta-Corbin hall entry. The forestry school entry, "Miss Torso" won the departmental competition. Bob Gilluly, Glasgow, traditions board chairman, presented trophies to representatives of the winning groups.

The MSU Treasure State band also provided haltime entertainment with one of its series of "Concerts on the Gridiron," with the theme of "A Musical Tour of South America."

Prof. Sibley, faculty member at MSU from 1903 to 1907, and honored guest at this year's homecoming, left here Sunday afternoon to return to his California home. He said he had a wonderful time here and greatly enjoyed every phase of the homecoming.

The six graduates of the class of 1905 who attended represented two-thirds of the surviving members of the class. They are Herbert Hughes, Gresham, Ore.; Mr. and Mrs. W. O. Dickinson, C. E. Simons, and R. E. Walters, all of Missoula, and Mrs. Jessie Gibony, Seattle. The entire group had a get-together at the Simons home Sunday afternoon.

A reunion banquet, a sons-daughters-parents breakfast, a Sunday morning quarterbacks' breakfast, and the Ted Weems' dance were other features of homecoming.

## Yellowstone Room Scene For Pictures This Week

Sentinel pictures are being taken in the Yellowstone room of the Lodge this week. Men are requested to wear sports jackets and ties for the pictures and women are to wear dark sweaters or blouses.

Students have until 4 p.m. today to make picture appointments if they have not already done so, announced Kay Blaszek, Sentinel business manager.

### GOVERNMENT SAYS VETS CAN HAVE A SIDE INCOME

Money earned outside of class by veterans in school under the Korean GI bill has no bearing on the amount of GI allowance paid them by the government, the Veterans Administration has announced.

The rates for veterans in school full-time are \$110 a month with no dependents, \$135 with one dependent, and \$160 with more than one dependent. Additional outside earnings need not be reported to the VA.

## Pennario, Classical Pianist, Will Open Community Series

Leonard Pennario, Community Concert artist, will open the 1955-56 concert series Wednesday, 8:15 p.m. in the Field House. Pennario is one of the outstanding classical pianists of the time as both a recording artist and a concert musician.

At age 12, Pennario made his professional debut with the Dallas Symphony orchestra. His first major triumph was with the Los Angeles Philharmonic with which he has appeared as soloist 24 times. He has been soloist with the New York Philharmonic four times since he first appeared with that orchestra in 1943, and has also been guest of the Chicago, San Francisco, St. Louis, and Minneapolis orchestras.

Pennario has given six Carnegie hall recitals in New York and has recorded more than a dozen long playing records. In 1952, he made his first European tour through Holland, Italy, France, and England, and was received well throughout Europe.



## EDITORIALLY . . .

**Frosh Camp Completed Aims**

Think of your age . . . multiply it by two . . . add six . . . now multiply by 30, and close your eyes . . . dark isn't it?

We felt kind of like that the first day we were freshmen and are inclined to think there have been a lot of frosh who had the same sensation. About 60 of the prospective students took part in what looks like a partial counter-punch to the situation. Student leaders and faculty, earlier this fall, put over a case history in successful orientation. They gave the lowdown on everything from what to wear the first day to what is the purpose of a college education.

The encouraging thing about the whole program was the thoroughness of the approach. Take for example the Rev. D. W. Ferm's "Choosing a Set of Values," or Dean G. B. Castle's "Purpose of a College Education"—aside from the fact that both topics are excellent food for the education-starved freshman, it was the manner in which the camp followed up that drove the principle home like Furillo's first homer of the series.

As soon as the talks were over the campers were sectioned into discussion groups to thrash out the chaff and put the thing into their own words. Add to this the fact that they probably continued the debate after "lights-out" and it would seem likely that one would never forget the experience.

## . . . It Was Stimulating

Of course the topic of hottest controversy was whether or not to join a fraternity or sorority, and the lunge-and-pary in this issue drew some deep thinking by the leaders as well as the students. There is probably no way of measuring the total impact of such a camp but at any rate it's mental stimulation and that's what we're here for.

Ron Erickson, Associate Editor

**Steam Valve . . .**

The Lodge—that's the new student union building at MSU—the center of student activities and meetings on campus.

Realizing this and the convenience of the Lodge, a certain group decided to hold their luncheon council meetings there. X (we'll call him that for the sake of anonymity) went to see about reserving a room. First he went to Miss A. who sent him to Miss J., who told him to see Miss W., who transferred him to Miss M., who tried to send him back to Miss W. but didn't succeed. So Miss M. called Mr. P. and the upshot of the whole thing was this:

The Ravalli room is not available for such meetings. It seems that it is the "President's room" and has to be free at all times in the event that the president wants to use it. The conference rooms are all tied up with such things as teachers' meetings and down-town businessmen's meetings. But they're going to see if they can find us a table somewhere in a comparatively quiet corner.

In case you forgot, this all took place in the Lodge. That's the new building for students at MSU. (signature withheld by request)

**Dr. D. E. Killip  
Dentist**

Located in the Chimney Corner  
— ON THE CAMPUS —

**Spurs Tap Pair  
As Group Recruits**

Two new Spurs were tapped at 6 a.m. Saturday by Tannan of Spur. They are Beth Briggs, Missoula, and Kathleen Harris, Livingston, who will take the places of Barbara Barton, now attending Washington State College of Education, Eastern, at Cheney, and Larriana Patton, now in Jordan, Palestine.

The two girls were honored afterwards at a breakfast and assumed their first duties by march in the Homecoming parade.

STUDENT AUTO, LIFE,  
AND HOSPITAL INSURANCE  
**RAY TIPP**  
Special Representative  
406 Montana Bldg. - Ph. 3-3993



It's  
Better  
Dry Cleaning  
— DIAL 2-2151 —  
**Florence Laundry**

**Starts Tomorrow**

**The Captain's Paradise**  
Alec GUINNESS  
Yvonne DE CARLO

**Campus Theater****A Gift for Every Occasion****RUSSELL STOVER CHOCOLATES**

delicious assortments in four handy sizes  
from \$1.35 to \$6.35

at  
**PETERSON DRUG CO.**

232 N. Higgins

**The Montana  
KAIMIN**

Established 1898

Published every Tuesday, Wednesday, Thursday, and Friday of the college year by the Associated Students of Montana State University. Represented for national advertising by National Advertising Service, New York, Chicago, Boston, Los Angeles, San Francisco. Entered as second-class matter at Missoula, Montana, under Act of Congress, March 3, 1879. Subscription rate \$3.00 per year.

Printed by the University Press



Member

Montana State Press Association  
Member, Rocky Mountain  
Intercollegiate Press Association

Editor, Kim Forman; Business Manager, Virginia McBride; Campus Editor, Ron Erickson; Feature Editor, Joan Hoff; Photographer, Don Dooley; Circulation Manager, Dave Nelson; Faculty Advisor, E. B. Dugan.

**HAVE YOU SEEN  
THIS MAN?**

**YOU SHOULD! HE'S  
J. Lyle Denniston  
who represents the  
NEW YORK LIFE  
INSURANCE COMPANY**

**He has a modern, practical and easy-to-own life insurance plan for**

**MONTANA STATE  
UNIVERSITY  
STUDENTS**

For further information, call  
**J. LYLE DENNISTON**  
309 Kensington Ave.  
Phone 9-2648

**All the pleasure comes thru**

*...the taste  
is great!*



©A.T.CO.

All the pleasure comes thru in Filter Tip Tareyton. You get the full, rich taste of Tareyton's quality tobaccos in a filter cigarette that smokes milder, smokes smoother, draws easier...and it's the only filter cigarette with a genuine cork tip.

Tareyton's filter is pearl-gray because it

contains Activated Charcoal for real filtration. Activated Charcoal is used to purify air, water, foods and beverages, so you can appreciate its importance in a filter cigarette. Yes, Filter Tip Tareyton is the filter cigarette that really filters, that you can really taste...and the taste is great!

THE BEST IN  
FILTERED SMOKING

**FILTER TIP TAREYTON**

PRODUCT OF

*The American Tobacco Company*

AMERICA'S LEADING MANUFACTURER OF CIGARETTES



Jumbolaya, SAE's Touchball Winners

Competition in the 1955 touch football league began Monday as the SAE's and Jumbolaya won first round games.

The SAE's defeated the Butte Rats 14-6. Bob Saunders of the Rats drew first blood when he scored on a pass early in the second quarter.

Intercepting a pass in the same stanza, the SAE's Dale Schneidmiller scampered over the goal line to knot the game at 6 to 6. The SAEs added another TD on a pass from Glenn McGivney to Gerald Ashmore. A safety for the SAE's in the final minutes completed the scoring.

Jumbolaya whipped the Theta Chi's 13 to 0 in a light rainstorm. Bob Hendricks scored for Jumbolaya in the second quarter on a run. A pass to Lee for the extra point was good and score at half-time read 7 to 0. Winterholler intercepted a Theta Chi pass in the third frame and raced over for a touchdown.

READ THE KAIMIN CLASS ADS

FOR THE BEST IN RADIO

**KGVO-CBS**

1290 ON YOUR DIAL



Montana's Most Powerful TV Station

**KGVO-TV**

PLAN NOW FOR FARVIEW HOMESITES

OFFICES  
RADIO CENTRAL BUILDING  
127 E. MAIN

**MOSBY'S INC.**  
OWNERS

Grizzlies Lose Homecoming To Hilltoppers

By JOHN BANSCH

Denver's strong ground and aerial attack coupled with Montana's shoddy defense, made this year's Homecoming game as dreary as the sky overhead, when the Pioneers defeated the Grizzlies 61-13.

Montana passes set up the Grizzlies two touchdowns, and during the afternoon, it was the only way that MSU could move the ball with any consistency.

During the first half, Denver constantly found holes in Montana's pass defense, and the Pioneers threw the ball at will, using both running passes, and long passes from the steady right arms of quarterbacks Jimmy Bowen and Bob Wegelin.

In the second half, the Hilltoppers stuck close to the ground, grinding out yardage around the Montana ends and through the tackles, to pile up four more touchdowns in the third quarter.

With Norm Kampschorr throwing to ends Pete Rhinehart, Terry Hurley, and Jerry Johnson, Montana's passing attack set up both of the Grizzly touchdowns in the free scoring second quarter. Don Williamson scored the first Montana TD on a plunge from the one, and Don Brant made Montana's second tally on a six yard sprint around left end.

The brilliant running of Denver halfback Willie Frank earned him the unanimous title of the outstanding back on the field. Doug Dasinger, Montana guard, and Larry Ross and Charles Olson, Denver, received an equal amount of votes for the outstanding lineman on the field.

Final Statistics

Montana	Denver
10 First downs	71
90 Rushing yardage	191
209 Passing yardage	265
27 Passes attempted	21
11 Passes completed	10
2 Passes intercepted by	1
8 Punts	2
39 Punting average	39
2 Fumbles lost	0
20 Yards penalized	51

Bear Facts

By GENELL JACKSON

There is little we can say about the Grizzlies' performance Saturday that has not been more eloquently expressed, but there is plenty to be said about the apathetic fans. When one lone Denver girl can make herself heard over a Montana cheer, something is mighty wrong.

Granted, the game wasn't the most exciting ever played on Dornblaser field. But would you get up and walk out of a music school recital during the middle of a number, or leave a Masquers' production during an act? Of course not—college has taught you a bit more common courtesy and ethics.

But is leaving a recital or play at the wrong time any different than pouring out of the stands when the Grizzlies are getting trounced. Not even ever faithful Spurs and Bear Paws stuck by the Montana gridders Saturday. If the coaches and team can play it out, surely fans could do the same.

To be sure, everyone stuck out one half to see who was crowned Homecoming queen, but the game was supposedly the highlight of the day. As Robert Sibley, one of MSU's foremost traditionalists told alumni during a dinner Friday, "Love your school, fight for her, cheer her on—your school is you."

End of sermon for today.

Everyone (well, practically everyone) has heard of the ability of Severn Hayes, the junior college All-American transfer from California. Unfortunately, a pre-season injury has prevented us from seeing him in action. But as Severn drawls in his heavy Southern accent, "Holy Toledo man, you just wait till I get back on that field. Montana will rise again."

We'll be waiting, Severn.

Three freshmen are following in the footsteps of older brothers active in MSU sports. Mark Dasinger, Wolf Point, hopes to fill brother Doug's (The Bear) shoes. Darrel Dunham, a younger version of brother Al, comes from basketball glory at Shelby, hoping to continue his hoop success at MSU. Jimmy Powell, Big 16 high basketball scorer of last season, follows brother Bobby who starred with the "Fabulous Frosh."

Both of the Class B athletes are familiar with substituting for their big brothers. Both young Dasinger and Dunham joined their brothers in independent basketball last spring, playing in the Jaycee invitational tournament in Lewistown. It really had radio announcers going to figure which Dasinger and which Dunham was on the court. Both Mark and Darrel went in as subs for Doug and Al respectively.

Speaking of freshmen, Jack Zilly is working out quite an aggregation of high school all-stars. Some of the out-of-staters include Jim DeFalco, Chicago all-Catholic end; George Knee, guard and shotput record holder at Warsaw, Ind.; Mickey O'Brien, all-Spokane center; Jerry Connors, all-Spokane and all-state fullback; and Bob Everson, Cheney, Wash., all-conference halfback.

Some of the Montana stars are Steve Renning, and Stan Tiffany, both Great Falls all-state guards; Vern Tennant, Kalispell all-state fullback; and Don Brickley, all-state center.

Colorado A&M Leads Skyline

The big surprise in Skyline play Saturday saw Colorado A&M upsetting powerful Wyoming 14-13 in a defensive strife at Laramie to remain in first place.

Utah, opening conference play with a decisive victory over twice beaten Brigham Young 41-9, is definitely a contender for the title. Besides Denver's triumph over Montana, other Skyline play last week was Utah State winning from New Mexico 18-0.

Interest in Skyline play is centered around Denver, Friday night, where the strong Utah team meets Denver's Pioneers.

Colorado Aggies and BYU have an open date this weekend. The only conference game Saturday is at Logan, where Montana is matched against Utah State. The Wyoming Cowboys play Tulsa at Laramie Saturday and New Mexico will be host for San Jose State in a night game at Albuquerque.

Conference Standings

	W	L
Colorado A&M	3	0
Utah	1	0
Wyoming	2	1
Denver	1	1
Utah State	1	1
Montana	1	2
Brigham Young	0	2
New Mexico	0	2

All Games

	W	L
Colorado A&M	3	1
Utah	3	1
Wyoming	3	1
Denver	3	1
Utah State	1	3
Montana	1	3
Brigham Young	1	3
New Mexico	1	3

TODAY IS DEADLINE ON IM BOWLING ROSTERS

All intramural ping pong and bowling rosters should be turned in to the intramural office immediately. They were due yesterday, according to director Edward Chinske.

Bowling will begin Saturday at the Liberty Bowling alley. As soon as table tennis rosters are all in, a round robin tournament will be worked out. Games will be played in the recreation room of the Lodge.

Touchball games today are: field one, Highlander 9 vs. PDT; field two, ATO vs. SPE; field three, Jumbo vs. Forestry.



**Don Anderson**

209 Stevens St. Phone 3-3113

Century Club Elects Officers

Robert L. Anderson, Missoula, was elected president of Montana Century club, an organization formed to improve Grizzly athletics, at a meeting in the Field House Friday.

Nearly 50 of the total 225 members attended the meeting. They voted unanimously that the club's money should be used for scholarships only. The club receives its name from the \$100 contribution required annually for membership.

William F. Campbell was elected vice president; George P. (Jiggs) Dahlberg, secretary; and E. Kirk Badgley, treasurer. All are Missoula residents.

Club members receive two tickets with preferential seating for all Grizzly athletic events during the year. They also receive a special lounge, coatroom and parking privileges at the Field House.

Mrs. R. D. Williams, Spokane, Wash., mother of head football coach Jerry Williams, and C. H. Rittenhour, Plains, who played left guard on MSU's first football team in 1897, are among new club members.

Election of new officers will take place each year at Homecoming.

READ THE KAIMIN CLASS ADS




WILBUR JUST WOKE UP TO THE FACT THAT HE'S IN CLASS!

KEEP ALERT FOR A BETTER POINT AVERAGE!

Don't let that "drowsy feeling" cramp your style in class ... or when you're "hitting the books". Take a NoDoz Awakener! In a few minutes, you'll be your normal best ... wide awake ... alert! Your doctor will tell you—NoDoz Awakeners are safe as coffee. Keep a pack handy!

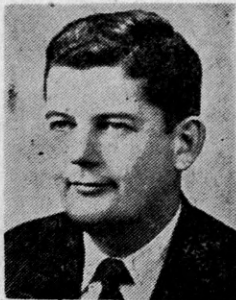
15 TABLETS, 35c

"Phi-Beta" pack 35 tablets in handy tin 69c



JIM (The Cleanest Man in Town) THANE Says:

WE KNOW YOU WILL BE PLEASED WITH OUR SPEEDY SERVICE AND THE HIGH QUALITY OF OUR WORK. We are so sure of this that we offer you an unconditional guarantee: YOUR COMPLETE SATISFACTION OR WE DON'T CHARGE YOU A CENT. We pick up and deliver daily all over town, and our motto is "IN AT TEN DIRTY, CLEAN AT TWO THIRTY." Why not give us a whirl today?



10% Discount for Cash and Carry

Jim Thane's Drive-In Cleaners

Between Second and Third on Orange  
Dial 3-3131 for Pickup and Delivery

IF IT'S BON TON . . .



. . . IT'S GOT TO BE GOOD

Bon Ton Bakery

505 W. Front

Community Concert

Ticket \$4.00

FOUR ARTISTS

First Concert  
Tomorrow Night!

LEONARD PENNARIO,  
Pianist

CHARITY BALL

Dance, enjoy yourself and help a worthy cause at a BIG show, the annual Charity Ball of the Missoula Crippled Children's Association.

Friday, Oct. 14  
Field House

**FOUR** dance bands playing alternately from 8 p.m. to 1 a.m. Arnie Carruther's Quartet, Gene Bradley and His Band, Jim Snyder and The Five, The Serenaders.

**THREE** floor shows of music and comedy. 40 professional musicians. German Band act of Faculty, Prof. George Hummel and His Secret Weapons.

**TEN** used cars have been donated. Holders of tickets need not be present.

**THOUSANDS** of friends needed to help the charitable work of the Missoula Crippled Children's Association and its Treatment Center serving all of western Montana.



## Bucelle Gives Likes, Dislikes

By GINGER GEORGIA

Francois Bucelle, 20, Aix-en-Provence, France, is one of 22 foreign students on the MSU campus this year. He is studying Economics and though he is undecided about the future, he hopes to work for the Colonial Companies of France, importers and exporters, after he returns to his country.

The blue-eyed student attended Aix-en-Provence high school for seven years where he studied philosophy and graduated first in his class. He then started his study of Economics at Ecole Supérieure de Commerce de Marseille, university at Marseille.

The schools of France differ from ours in many ways. The university itself has no campus, but has buildings spread out in different sections of the town. Francois agreed that it would be more convenient to have all the buildings in the same section. Business is not taught in French universities, but is taught in special schools. The main courses offered in the schools are law, medicine, and mathematics. While we have from 15 to 20 hours of classes each week, French universities require 20 to 30 hours of study each week. This time is used for studying in class and therefore French students do not have to prepare for the next day's class. Francois speaks French, Italian, and English, which he studied for seven years.

The schools in France have no fraternities or sororities. His reason for this was the fact that Frenchmen like to be free and don't want to belong to one group or organization.

### Don't Need Cheerleaders

In the line of sports, the difference is very great. Even though the rules may be the same, the French call it handball, rugby, and football. At these sports events, the fans will have no cheerleaders leading them. Most of the spectators are so excited with the game and go through the motions of "fight!" that they hardly need anyone to tell them when and how to yell.

Our foreign friend's likes are many. His favorite food is La Bouillabaisse, a dish from Marseille which is mainly a fish soup. He also likes Pizza. When asked why he liked an Italian dish he answered, "All French people like good food." In the way of sports,

## BASKETBALL TRYOUTS SET

Western Jumbolaya, champions of C league in intramural basketball last winter, are holding a fall rookie tryout for interested prospects, according to Bob McGihon, general manager.

McGihon asked that those interested be at the men's gym from 12:45 to 1:15 on Mondays, Wednesdays and Fridays.

he claims handball as first choice, then rugby, professional bicycle races, and French football. His hobby is listening to modern jazz. One of his dislikes is singers in jukeboxes and another is American girls who wear flat shoes. He feels that they should wear heels on campus.

### Countries Differ

Francois seemed to find many differences between his country and America concerning clothes, social functions, manners, and movies. He believes the French people dress more conservatively than do most Americans. Instead of wearing such bright-colored clothes as a pink pair of corduroy pants with a purple shirt, Frenchmen wear more economical-colored clothes. Social functions are different in many ways. The type of music for dancing is usually tango, rhumba, and some jazz. He added that the French people actually do the tango and rhumba to this music while in this country, we get away with doing the waltz to almost anything.

## Little Man on Campus

By Dick Bibler



"Oh, I wouldn't worry too much about passing, Miss Freeman as long as I'm grading on th' curve."

## Newman Club Meets Tonight

Newman club meets for the second time this quarter at 7 p.m. today in LA 103. At last week's meeting, with over 100 present, new members were introduced to spiritual and social aspects of the club.

It was then decided to hold rosary twice a day on campus. Father Burns, chaplain for the group, urged all Catholic students to attend the 10:15 a.m. Mass in the Music School auditorium on Sundays to avoid over-crowding the downtown churches.

At tonight's meeting committees will be formed and an officers' report of the national convention will be given. For the next several meetings the club plans discussions on evolution.

WESTERN STATES, ALSO ALASKA, HAWAII, FOREIGN  
Exceptional Teaching Opportunities  
now or mid year  
Certification Booklet and Free Membership  
HUFF TEACHERS AGENCY  
2120 Gerald Ph. 6-6653  
40 Years of Service - Member NATA

**KBTK** 1340 KC  
ONLY THE BEST MUSIC

**Smoke  
Tomorrow's  
better cigarette\*  
Today-**

**Enjoy a Cool Mildness  
never possible before!**

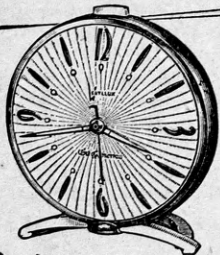
PUT A  
SMILE IN **YOUR**  
SMOKING!



**\*Chesterfield**  
**BEST FOR YOU!**

© LIGGETT & MYERS TOBACCO CO.

**LUXURIOUS TO  
OWN...LOVELY  
TO GIVE**



**"Clock of Tomorrow"**

The incomparable  
new spring-driven alarm by

**WESTCLOX**

- ★ Chime alarm; quiet tick
- ★ Luminous dial and hands
- ★ One knob sets time and alarm
- ★ Ingenious luminous signal tells you when alarm is set

WHITE OR BLACK FINISH,  
WITH GOLD COLOR  
NUMERALS AND TRIM **\$12.50**  
Plus Tax

**MISSOULA  
DRUG CO.**

In the Hammond Arcade