

University of Montana

## ScholarWorks at University of Montana

---

Montana Kaimin, 1898-present

Associated Students of the University of  
Montana (ASUM)

---

2-17-1956

### The Montana Kaimin, February 17, 1956

Associated Students of Montana State University

Follow this and additional works at: <https://scholarworks.umt.edu/studentnewspaper>

**Let us know how access to this document benefits you.**

---

#### Recommended Citation

Associated Students of Montana State University, "The Montana Kaimin, February 17, 1956" (1956).  
*Montana Kaimin, 1898-present*. 3189.  
<https://scholarworks.umt.edu/studentnewspaper/3189>

This Newspaper is brought to you for free and open access by the Associated Students of the University of Montana (ASUM) at ScholarWorks at University of Montana. It has been accepted for inclusion in Montana Kaimin, 1898-present by an authorized administrator of ScholarWorks at University of Montana. For more information, please contact [scholarworks@mso.umt.edu](mailto:scholarworks@mso.umt.edu).

## Lenten Season Opens With Mardi Gras

Crowning of a king and queen will highlight the Mardi gras, marking the beginning of the Lenten season, Saturday evening from 9 to 12 in the Yellowstone room of the Lodge. Newman club is sponsoring the event, assisted by Associated Women students.

Ten dollars worth of records will be awarded the living group that has the concession with the biggest attraction.

Vince Barry, Butte, is chairman of the Mardi gras. Music will be provided by the Continentals. Students should wear dressy clothes.

Voting for king and queen was yesterday and today in the Grill room of the Lodge. The winner will be announced at the dance. Candidates are: Alpha Phi, Cara Boggess, Libby; New hall, Mary Canavan, Butte; Corbin hall, Nona Larson, Whitehall; Kappa Alpha Theta, Carla Clausen, Missoula; Delta Delta Delta, Sue Thomas, Costa Mesa, Calif.; Delta Gamma, Janet Lemery, Dixon; North hall, Ardith Hamilton, Havre; Sigma Kappa, Pat Curran, Great Falls; and Synadelphic, Shirley Lucier, Drummond.

King candidates are: Craig hall, Tom Jenson, Michigan City, Ind.; Sigma Chi, Don Oliver, Billings; Alpha Tau Omega, Dick Baldwin, Berkeley, Ill.; Jumbo hall, Dave Braach, Hall; Sigma Alpha Epsilon, Barry Valacich, Great Falls; Sigma Nu, Lee Andrews, Philadelphia, Pa.; South hall, Ken Travis, St. Charles, Ill.; Sigma Phi Epsilon, Jerry Hinman, Anaconda; Theta Chi, Ron Rundle, Chicago; Phi Delta Theta, Buzz Bowlin, Great Falls; and Phi Sigma Kappa, Don Clark, Sidney.

## Calling U

Wesley Foundation will meet at 5:30 p.m. Sunday. Transportation from the Lodge at 5:15. Sunday is student World Day of Prayer at the Methodist church.

Pershing Rifles and Scabbard and Blade are giving a party for all Sponsor Corps members Sunday, at 7 p.m. at the Fort Missoula Officers' club. Transportation will be provided from the ROTC building and North hall.

Independent Executive board will meet at 9:30 p.m. Monday in Conference room 1 in the Lodge.

Each living group must have one representative, a "precinct chairman," at the Judicial board election Monday, 4 p.m. in the Yellowstone room of the Lodge.

World Day of Prayer, sponsored by Inter-Church Council, will be observed Sunday night from 5:30-7:30 p.m. at the Methodist church, 300 East Main.

## Silvertips Dump Denver Pioneers 89-72

By JOHN BANSCH

Montana, paced by Zip Rhoades' 32 points, won their second conference game of the season, and their 10th victory of the year last night, beating Denver 89-72.

Rhoades, playing the best game of his University career, hit 11 of 19 shots from the field, and 10 of 14 from the free throw line. The "Zipper" hit constantly from the outside with his left-handed jump shot, and several times during the ball game he drove through two or three Denver players to score on lay-ins.

The entire Montana team was hot, making an even 50 per cent of its shots. The Grizzlies connected on 30 of 60, including 17 of 30 in the first half.

Russ Sheriff continued to improve at the pivot position, scoring 23 points. The big Helena center hit 10 of 12 shots, many of them difficult ones under the basket, plus three of six free throws.

Two other Montana starters hit double figures. Ed Bergquist made three of eight shots, and he hit nine of 10 from the charity line for 15 points, while Al Dun-

## Heavy, Heavy Hangs Over Thy Head...



Photo by Dick Harris  
Reading from left to right: Marjorie Edmondson, Sidney; Whitney Hines, Billings; Delores Vaage, Missoula (standing); Theron DeJarnett, Billings; Doug Giebel, Big Sandy; and Myrna Jo Black, Great Falls in a scene from the Masquers' production "Blythe Spirit" which ends tomorrow night.

## Crippen Discusses Budget, Says Dance Committee Losing

Bruce Crippen, ASMSU business manager, discussed budget allowances to the funds of the various ASMSU committees with members of the Activities board Wednesday afternoon.

Crippen reported that the dance committee has been operating at a loss recently. Bill Williamson, dance committee chairman, said the reasons behind this have been poor attendance at the dances, and the lack of a big-name band. Williamson said his committee has tried to line up some of the country's leading dance bands, but it has either received unfavorable replies, or no replies whatsoever.

The ping pong tournament, which was scheduled to begin Wednesday, Feb. 15, has been postponed until next week, according to Lee DeVore, Spokane, games committee chairman. She said the tournament was postponed because more players are needed and more publicity should be given to the tournament in order to stir up interest among the students in the competition.

Tomme Lou Middleton, director of student activities, told Activities board members the Skill-Pool game in the Game room will be removed from the Lodge if the constant cheating at the game does not cease. She said players stop the balls before they can drop into the scoring holes, thus enabling them to play indefinitely without inserting any more money. The purchase of new games for students depends upon the amount of revenue collected in the game room, and this revenue is severely affected because of the cheating, Miss Middleton said. She asked for cooperation from the students, because when they cheat at the game, they are only hurting themselves.

Denver cut down the Grizzlies lead at the start of the second half because of Montana's failure to hit. The Pioneers cut the lead to 14 points, but could get no closer as they suddenly became cold again and the Grizzlies picked up where they had left off in the first half.

Hoyt Brawner, Denver coach, substituted constantly during the evening in an attempt to find a winning combination. The Pioneers could not seem to click for more than two or three minutes at a time.

Denver's highly rated center, Brott, was outplayed by Sheriff under the boards the entire game. Brott, who is supposedly the Sky-

### Powell Leads Denver

Jim Powell, sophomore forward for Denver, led the Pioneers' attack with 20 points. Powell hit for 10 baskets during the game, and he made his first nine shots. He used a beautiful jump shot from outside the key that was nearly impossible to stop.

Dick Brott and Bill Jones were the second-high scorers for Denver with 12 points apiece. Jones picked up all 12 of his points in the second half.

Both teams were hotter than an August afternoon in the first half, with the Grizzlies holding a 48-30

# THE MONTANA KAIMIN

Montana State University, Missoula, Montana

Volume LVII Z400

Friday, Feb. 17, 1956

No. 66

## Halls Receive New Names At Processional Convo

By GARY SORENSEN

The new names Elrod, Turner, and Brantly were officially assigned South, New, and North halls, as the 50th anniversary was celebrated in a processional type

convocation in Charter Day ceremonies this morning.

Severe weather conditions forced the convocation inside and ceremonies were conducted in Elrod, Brantly, and Turner halls with a special coffee hour following in Turner hall. University Vice-President President Dr. A. S. Merrill officially renamed South to Elrod, and introduced J. Earll (Burly) Miller, who gave a speech on the accomplishments of Prof. Morton J. Elrod.

In his talk Dr. Miller said, "Dr. Elrod was a great teacher — he

## Foresters' Convo Tuesday Features Fashions, Novelty

To open "Foresters' Week" on the campus, the annual Foresters Convo begins at 9:30 Tuesday in the University theater, announces Dee Scriven, Los Angeles, Calif., head of the ASMSU convocations committee. Dress for Tuesday is jeans and crazy hats. No ties or suits are allowed and that goes for faculty, too, said Scriven.

Featured in the Foresters' convo is everything from a "Fashion Show" to a novelty by Dick Riddle, Libby. It is said to be the first foresters convo where any concentrated rehearsal actually went into it.

A forestry posse will keep students moving in the direction of the convo, and a band in front of the Lodge will try to keep persons out of the grill.

Also on the convo program is the foresters' jug band, and the Freshman quartet. The band that will play at the Foresters' Ball next week end will give entertainment throughout the convocation.

## Food Poison Strikes 200 In All Dorms

An estimated 200 residence hall students were reported to be ill with food poisoning this morning, crowding the health center, and keeping Dr. Harold Braun too busy to answer the phone.

Lendal Kotschevar, director of food service and residence halls, said, "It can be nothing but careless food handling . . . and I hate that."

The sickness was spread through all residence halls and began to appear around one o'clock this morning.

Kotschevar said Dr. Braun asked for samples from a gravy dish from last night's supper. He was also interested in pickled peaches served last night.

"I would hazard a guess that it is a form of food poisoning called 'Staphylococcus' in one form or another," Kotschevar said.

It is hard to tell how widespread it is, he said, because some people have a higher "tolerance" for different types of poisoning.

line's leading rebounder, hauled in only two, while Sheriff pulled in 13.

Montana, gaining its 10th win of the year last night, is back at a .500 percentage. The victory also places the Grizzlies only one game back of seventh-place Denver in the win column.

In the preliminary, the freshmen played an intra-squad game, with the White team defeating the Reds 79-60.



DR. J. EARLL MILLER

could explain, he could demonstrate, he could follow through. Truly he was the type, who on one side of the table, or a campfire, and with a student on the other, made a university. He was not easy. He expected each student to do his best, but always within the limit of his ability. In his dealing with students, Dr. Elrod was generous, not only with money, but was generous with advice, time, affection, and with himself."

After the renaming of South hall, the assembly moved to North, where President McFarland introduced Theodore Lee Brantly and officially renamed the hall Brantly. Mr. Brantly presented eulogies on his mother, Mrs. Theodore Brantly. Mrs. Brantly was social director of North hall from 1926 to 1939.

The convo progressed to New hall and at 10:10 a.m. Dr. Merrill officiated as New hall became Turner hall. A speech by J. Maurice Dietrich on Mrs. Belle Turner followed.

Dietrich in his talk said, "Mrs. Turner, whose natural manner was to be gentle, was not averse to using discipline when it was necessary. There was no such thing in her make-up as compromise when it came to a question of moral right or wrong. But her rule was more by love than by rod and her girls loved her as a 'second mother.' She was proud of the University's growth physically, educationally, and spiritually."

"This is particularly happy occasion for those of us who knew Mrs. Turner best. Those of us of her family are grateful to know that such qualities have prompted her colleagues to suggest that this beautiful structure be named Turner hall."

The freshman girls of the home economics department's cooking class will cook and serve the luncheon to all MSU's Charter Day guests. The luncheon will be served in the newly furnished living room of the home economics department in the Women's center.



## Steam Valve . . .

Dear Kim Forman:

In reference to your editorial of Wednesday, February 8, we the members of the "reactionary" Budget-Finance committee wish to express our views on the proposal of pay for ASMSU officers.

The one sided presentation of the proposal in your editorial failed to mention many negative aspects of this issue. In all fairness to the student body, we feel every element should be considered.

You state that some people are kept out of ASMSU positions because they have to work. This may be true, however everyone should be aware that in the past many such officers have worked. Furthermore, if this is true, does it not apply to other campus activities? Is there a distinct cut-off between paying ASMSU officers and Central Board members? What of the time consuming committee chairmanships, cheerleaders, and Jubileers. Where are such salary payments to end? If need is on the basis for this demand, perhaps scholarships could be set up.

You claim pay would increase MSU officers prestige, pointing to the President of the U.S. The fact that the President of the U.S. is paid is hardly analogous to an ASMSU position; and even if it were, we certainly question the reasoning that pay makes the presidency a position of "more responsibility and trust." The appeal of, and rewards from such offices, come not in monetary terms, but in experience, prestige, and a well deserved amount of admiration from the electorate. Certainly a student who is employed in the Lodge, or at the skating rink does not have the same prestige as an ASMSU officer. We feel that providing pay for these officers would tend to place the two on a closer plane, rather than rising one.

You say that many universities pay their officers. True; however haven't you overlooked the equally true fact that some schools do not pay their officers. If you intend to consider the practices of other schools as cause for adopting pay, is it not fair to look at something more than a portion of the facts?

You claim that paying ASMSU officers would be inexpensive. In viewing this "inexpensive investment" which would cost the students \$900 a year, we should check to see just where the money would come from, and what it is in relation to other expenses. This would amount to 1.33 per cent of the 1955-56 budget. From this present budget we find that the entire program of the Associated Women Students receives only 1.3 per cent. The ASMSU Student Loan Fund, designed to benefit all students in need, receives one-half of 1 per cent. The amount allocated to intercollegiate sports for women is also an enormous one half of 1 per cent. These amounts are established for this fiscal year, but there are other needs presently unmet. Last Thursday, for example, the University rifle team appeared before our committee to submit a budget

## The Montana KAIMIN

Established 1898

Published every Tuesday, Wednesday, Thursday, and Friday of the college year by the Associated Students of Montana State University. Represented for national advertising by National Advertising Service, New York, Chicago, Boston, Los Angeles, San Francisco. Entered as second-class matter at Missoula, Montana, under Act of Congress, March 3, 1879. Subscription rate \$3.00 per year.

Printed by the University Press

Member  
Montana State Press Association  
Member, Rocky Mountain  
Intercollegiate Press Association

Editor, Kim Forman; Business Manager, Virginia McBride; Associate Editors, Ron Erickson, Joan Hoff, Judy Weaver, Bill Larcombe; John Bansch; Photographer, Don Dooley; Circulation Manager, Dave Nelson; Adviser, Prof. E. E. Dugan.

to partially cover certain transportation expenses. Had it been available, \$900 would have been nearly enough to compensate for "part" of the expenses of this winning team.

In summation, if pay is to be given some student officials, where can it logically end? We question your argument that esteem can be purchased with a salary; but feel on the contrary that pay would tend to place such officers in a lower light. Since some schools do not pay their officers, our logic that this would be evidence for MSU's continuance along present lines is just as applicable as your argument. What you refer to as an "inexpensive investment" will cost \$900 and we fail to see where such money is to come from, without curtailing some already limited functions.

Bruce D. Crippen  
Chairman,  
Budget-Finance committee

The University of Minnesota's 1956 mock convention will be Democratic.

## Symphonette Plays Sunday

The winter concert of the University Symphonette, under the direction of Prof. Eugene Andrie, will be presented in the music school auditorium, Sunday at 8:15 p.m. A small admission fee will be charged.

Monroe DeJarnette, Missoula, will be guest conductor for the orchestra's performance of Samuel Barber's "First Essay." Roberta Lucke Farley, Havre, will be flute soloist for Kent Kennan's "Night Soliloquy."

DeJarnette, a senior in the music school, has won three prizes in composition at the University and has written several larger works including an "Alpine Suite" for orchestra. He wrote "Passacaglia and Allegro" for symphonic band which was introduced at the music school dedication concert in 1953. He composed the background music for the Masquers' production, "Macbeth" in 1951, and the incidental music for "Othello" in 1955. DeJarnette is now working on a ballet scheduled for its premiere performance with the MSU Ballet Theater next year.

DeJarnette is majoring in theory-composition and clarinet.

Mrs. Farley, a junior in the music school, was awarded a citation as the outstanding student at Vander Cook School of Music in Chicago in the summer of 1952. For more than two years she has

### LODGE GRILL

Sunday Dinner \$1.35

Baked Ham — Raisin Sauce  
Potatoes  
Creamed Peas  
Lemon Jello Salad  
Raspberry Sundae

Breakfast 8:30-10 a.m.  
Dinner 1-2:15 p.m.  
Supper 5:30-6:30 p.m.

## Bertha Decrees 'Boondocks Day'

"Boondocks Day", the Forestry club moose-cot, Bertha, has decreed, "will surround the Forester's Ball convocation next Tuesday, Feb. 21." And she mentioned something about wool shirts, logging boots (optional for the ladies), dirty pants, and old hats...

Bertha, it seems, has noticed the new tradition on campus, Miles City Day. "Bully!" she mutely roared, "methinks the woodticks can give everybody the chance to ham it up."

Now Bertha can't really talk, but there's a sort of quiet communion between the old gal and her band of neophyte foresters. And lately she has moosily conveyed the idea that she is a non-voting member of Traditions board.

A hush whispered through the forestry school one day last week when everyone somehow suddenly knew that Bertha had started a tradition all her own—"Boondocks Day."

been a student of Charles Osborne, music instructor, and has also studied in New York.

## Leuthold Named To ROTC Post

AFROTC Cadet Major Kenneth Leuthold was appointed deputy commander of the ROTC Corps this week by Col. Donald C. Jamison, professor of Air Science. Colonel Jamison also named Cadet 1st Lts. Lee Bayley and Ronald Dufresne as Corps intelligence and materiel officers.

Members of Leuthold's Group Staff are Cadet Major Roy Hammer, commander; Cadet Captain Robert Squires, executive officer; Cadet 1st Lts. Jack Streeter, adjutant; Robert Gallup, operations officer; John Phelps, materiel officer; George Bovingdon, public information officer, and Cadet T/Sgt. Richard Lindsay, Group Sergeant Major.

Squadron commanders are Cadet Captains Royce Mathews, John Leslie, and James Abbott.

Colonel Jamison announced that these positions were of permanent nature and would be in force for the remainder of the school year. As soon as weather permits the Cadet Corps will commence practice drill near the ROTC building.

READ THE KAIMIN CLASS ADS

## Some Foresters Specials

Ladies Levi's }  
BoyGirl Levi's } \$3.00

Regular \$4.95

. . . . . and to top it off . . . . .

Striped T-Shirts  
Tailored and Italian Necks  
\$2.95 to \$5.95

*Cecil's*



# Entire Stock White Stag Ski Wear

## 25% OFF

*White Stag*

SKI JACKETS!

SKI PANTS!

SKI CAPS!

SKI MITTS!

All New Styles!

For one week—beginning today—our entire remaining stock of men's White Stag ski wear reduced 25% less than regular price! Plan now. Shop this afternoon or tomorrow for best choice of styles and colors in your size. This sale ends February 25.

*The Mercantile*  
VARSITY SHOP...street floor



**Diamond Mountain**

Home of MSU Ski Club

22 Mi Northeast  
on Mont. 20

3 Tows

Warming Cabin

Concessions

Excellent Snow



## Sport Slants

Light-Heavyweight champion Archie Moore is scheduled to defend his title in London on March 13th. But the champ says he isn't sure he will go through with the bout.

Moore bases his indecision on the controversial decision handed down by an English referee against Kid Gavilan in a recent fight at London. Moore says, "I worked 16 long years to get the title, and I don't want to take a chance on throwing it away if I should get the kind of officiating that Kid Gavilan got."

## Classified Ads . . .

CALL Dave Boots for guaranteed radio-television repair. Missoula's lowest prices. Phone 9-2884 evenings.

FOUND: Black and silver glasses in L.A. building. Phone 6-6728. tf

1950 INTERNATIONAL panel truck. \$550. Call Dave Boots, evenings. 9-2884.

HAYRIDES and sleighrides, Ph. 9-8247, 2-2409.

FOR SALE: GE refrigerator and Blackstone washer. Jack Zilly, Ph. 9-7060.

SELL: Woman's ROTC uniform, size 13. \$15.00. Ph. 9-7077.

## Grizzlies Entertain Bobcats In Battle for State Crown

Montana and Montana State resume their 1955-56 battle for the mythical state championship Monday night in the Field House at 8 p.m.

The Bobcats come to Missoula Monday after playing two games against Colorado college in Bozeman this week end. MSC is currently in second place in the Rocky Mountain conference, and if they win both games this week end, they will be in a good position to overtake the league-leading Idaho State Bengals.

MSC and the Grizzlies split a two-game series in Bozeman last month, with the 'Cats winning the first game 55-54, and Montana the second, 69-57. Both games were hard-fought contests, and fierce action can be expected when the Bobcats and the Grizzlies meet again.

### Salonen Heads Attack

Bill Salonen, senior forward from Butte, is the Bobcats' leading scorer with a 12.1 average. Salonen was a thorn in the Grizzlies' side in Bozeman, scoring 13 points in the harrowing first game, and 14 in the second. This is Salonen's third year on the MSC varsity.

The remainder of the Bobcats starting line-up remains much in

doubt, as MSC coach Dobbie Lambert has been juggling his team a great deal this season. Jim Kelly, freshman center from Helena, will probably get the nod at the pivot position. Kelly started slow this year, but he has been improving with every game.

### Butcher May Start

Two Indiana freshmen may be in Montana State's starting five. Jim Butcher, Kokomo, was an all-state guard in the Hoosier state, and he has been starting for the 'Cats since the first of the year. Butcher has averaged 9.5 points a game, and against MSU he scored 10 points the first night and 14 the second.

Bill McQuitty, Elwood, Ind., is the other freshman who may be in Lambert's line-up. McQuitty is recovering from an ankle injury he suffered before the Montana series.

Other possible starters for the Bobcats include Fred Ingaldson, senior guard from Winnipeg, Can.; Ted Carter, sophomore forward from Livingston; Andy Matson, sophomore guard who transferred to MSC from Arkansas City (Kan.) junior college; and Bill Reardon, freshman guard from Great Falls.

Frosty Cox will probably start Ed Bergquist, Zip Rhoades, Russ Sheriff, Bobby Powell, and Eddie Argenbright, but at times Cox shuffles his starters as much as Lambert. Either Hal Erickson or Al Dunham could start for the Grizzlies.

## Registration Ends; 52 Boxers Signed

Registration closed Tuesday afternoon for the 30th annual M-Club fights, with 52 boxers registered for the March 9 event. Several of last year's winners, including Billy Merritt award winner Howard Johnson, have indicated they will fight this year.

Because of the great number of entries a special meeting of intramural managers was called Tuesday night to solve the problem of elimination of the fighters. It was decided that when one organization had two or more entries at the same weight, the organization would have to eliminate all but one of entries at that weight.

Fighters are working out every afternoon in the Men's gym, and starting next week, special instruction will be given twice a week in the evenings. Billy McFarland, a winner in the first M-Club fights, and Dean Jones, coach of the Elks boxing team, will give instruction at 7:30 p.m. every Monday and Thursday.

Thirteen bouts are scheduled for this year's fights, and plans are being made for the main event. Several fighters are being considered at this time, including Johnson.

Wednesday - Saturday

FIRST-RUN PICTURE

PAUL MUNI STRANGER on the PROWL

JOAN LOHRING

and Sterling Hayden in

"Battle Taxi"

Sunday - Tuesday

LUCILLE BALL WILLIAM HOLDEN Miss GRANT TAKES RICHMOND

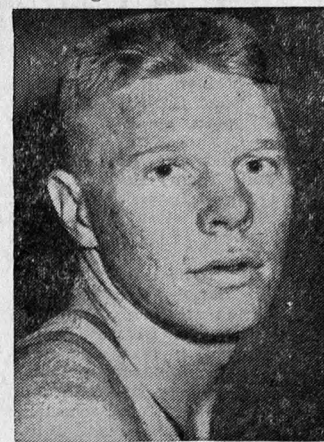
—and—

RICHARD CONTE LINDA CHRISTIAN SLAVES OF BABYLON

Campus Theatre

Adults 50¢

## Cat Cager . . .



Bill Salonen returns to the Montana Field House for the third consecutive year to lead the Bobcats' attack against MSU. Salonen is one of the best hustlers the Grizzlies will meet this year.

## HUFF TEACHERS AGENCY

WESTERN STATES  
Also Alaska, Hawaii, Foreign  
Exceptional Teaching Opportunities  
— Now for Mid-year or Fall —  
2120 Gerald Ph. 6-6653  
40 Years Service — Member NATA

## Missoula May Get Franchise for '56

Ogden, Utah (UP)—Missoula may still have a team in the 1956 Pioneer league race, according to league directors in Salt Lake City.

Ogden has turned down an offer to take back its franchise this year, but has indicated they may be interested next year. Ogden held a franchise until this year, but lost it to Butte because of financial troubles.

Butte vacated the franchise a few days ago when the directors of the Mining City club said they could not have a ball park ready for opening day because of financial difficulties.

League directors are expected to make a decision on the new league member Saturday.

## Golden Pheasant Cafe

Phone 9-9953 318 N. Higgins

American and Chinese Dishes

A La Carte or Table D'Hote Dinners Served at Moderate Prices

Open Weekdays

11:30 a.m.-Midnight

Saturdays: 11:30 a.m.-3 a.m.

STUDENTS WELCOME

## LIBERTY BOWLING

### Intramural Bowling Schedule

4—Sigma Phi Epsilon  
11—Cannibals

10—Jumbolaya  
12—Law

14—Bye  
8—Alpha Tau Omega

7—Sigma Nu  
3—Phi Delta Theta

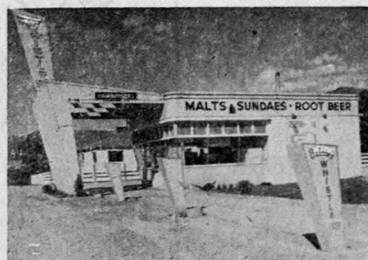
6—Phi Sigma Kappa  
2—Sigma Alpha Epsilon

1—Forestry  
13—Sonowea

5—Theta Chi  
9—Sigma Chi

Starts at 1 p.m.  
Feb. 18 . . .

After That Game Thursday with Denver  
and MSC Monday and Tuesday  
Come-on-down-to-the



WHISTLE STOP  
South on Highway 93

## Learn How Prayer Can Heal

in a free lecture entitled

## CHRISTIAN SCIENCE

"God's Promises Fulfilled"

by

Walter S. Symonds

of San Antonio, Texas

Member of the Board of Lectureship of the Mother Church,  
The First Church of Christ, Scientist, in  
Boston, Massachusetts

Tuesday, February 21 - 4:10 p.m.

Music Building — Room 104

Sponsored by Christian Science Organization of MSU



★ STARTING TONITE ★

at the

## ROXY THEATRE

The Montana Film Society

— Proudly Presents —

### A SOPHISTICATED SATIRE!

**MOIRA SHEARER** "3 Stars!! A delightful comedy ... artfully produced and directed ... Excellent cast!" NEW YORK DAILY NEWS

"A pleasure! ... sparkling bright comedy" NEW YORK TIMES

John Justin  
Roland Culver  
in  
**The Man Who Loved REDHEADS**

... again...and again...and...again

also starring GLADYS COOPER-DENHOLM ELLIOT  
Screenplay by TERENCE RATTIGAN  
Directed by Harold FRENCH-Produced by Janet SCHLO  
A London Films Presentation-A Lippert Films Distributing Corporation Release-Released thru UNITED ARTISTS

Printed by  
TECHNICOLOR

added Special color feature  
MAGOO color cartoon

FRIDAY-SATURDAY Shows at 7:00 and 9:15 p.m.  
SUNDAY SHOWS AT 1:00 - 3:00 - 5:00 - 7:00 and 9:15 p.m.

COFFEE HOUR . . . in the lounge every evening at 8:30 p.m. through courtesy of the Florence Hotel.

## SUNDAY at the FOX!

20th CENTURY-FOX PRESENTS  
VAN JOHNSON · JOSEPH COTTEN · RUTH ROMAN · JACK CARSON  
**THE BOTTOM OF THE BOTTLE**  
CINEMASCOPE



# Mardi Gras Highlights Busy Week End

Social life this week end centers around the Mardi gras which will be held tomorrow night in the Lodge. The Mardi gras will include dancing and booths sponsored by the student living groups. The highlight of the evening will be the crowning of the king and queen.

Three fraternities will have their winter quarter functions tonight. The ATOs are holding their annual formal dinner-dance at the Missoula hotel. The Sig Eps will have their Fireman's ball at the chapter house. The Phi Sigs' 26th annual Coffee Dance will be held at the Legion club with music by the Continentals.

## Initiations

The Delta Gammas initiated 18 girls into the active chapter Feb. 4. Girls who were initiated are: Barbara Chapple and Audrey Wacker, Billings; Dorothy Dunbar, Butte; Meredith Swank, Chester; Sue Williams and Lora Zoller, Great Falls; Virginia Bacon, Helena; Nancy Nelson, Livingston; Beverly Moore, Shirley Moore, Mary Jean Schilling, and Mary Ann Whaley, Missoula; Marilyn Osher, Polson; Kathy O'Neill, Roundup; Nona Larson, Whitehall; Janet Whittle, Ft. Collins, Colo.; Cleo Bardelli, Osborn, Ida.; and Gail Hammer, Colfax, Wis.

KAIMIN CLASS ADS PAY!

## new! Van Heusen Century

The big news in white shirts!—the new Van Heusen Century! Its comfortable collar stays wrinkle-free all day—without starch or stays! The points can't curl up. It's one woven piece of special collar fabric with no fused or stitched layers to work apart or fray. Wide-spread or regular models

**Dragstedt's**  
EVERYTHING MEN WEAR  
ON CIRCLE SQUARE

## New Pledges

Roger Mellem, Kalispell; Dale Krieder, Sand Springs; and Jack Evans, Poplar, are new Phi Sig pledges.

Chuck and Jim Harbolt, Chino, and Gregory Hosburg, Miles City, are new Sigma Nu pledges.

Bob Romek, Red Lodge, and Don Nelsno, Livingston, have pledged SAE.

## Officers

Shirley Smith, Vananda, has been elected president of the Sigma Kappa house. Delores Pauling, Wallace, Ida., is first vice-president; Ardythe Romstad, Antelope, is second vice-president; Luann Hanson, Kalispell, is secretary; and Jacquelyn Greenough, Butte, is treasurer.

Paul LeRoux, Helena, is new rush chairman for ATO.

## Guests

Peggy Marlowe, Helena, Sweetheart of Sigma Chi, will be a dinner guest at the Sigma Chi house Sunday.

Dr. and Mrs. Frank du Mas were dinner guests at the SAE house Tuesday. Dr. du Mas held a discussion on the field of psychology.

Mr. and Mrs. Walter Van Tilburg Clark and Mr. and Mrs. Herbert Cecil were dinner guests at the Kappa house Sunday.

Mrs. S. H. Bovingdon and Nan Bovingdon, Seattle, and Mrs. R. H. Jesse were dinner guests at the Kappa house Monday.

Janet Thornton, Missoula, was a dinner guest at the Kappa house Tuesday in honor of her birthday. Lew Krueger, Forsyth, and Del McDonald, Lead, S.D., were dinner guests at the ATO house Tuesday.

## Exchanges

The Phi Sigs and Thetas had an exchange dinner and dessert dance Tuesday.

The DGs had an exchange dinner with the Sigma Nus, Feb. 8. Wednesday, the DGs and Theta Chis had an exchange dinner.

## Pinnings

Jeanne Sanderson, KAT, '59, Billings, is pinned to Larry Nitz, SAE, '58, Clyde Park.

Joan Evans, KKG, '56, Colstrip, is wearing the SAE pin of John Powell '57, Calgary, Alta, Can.

Donald Lord, SAE, '58, Great Falls, pinned Patricia Washburn, Great Falls.

Konni Feig, SK, '58, Conrad, is wearing the ATO pin of Bill Holt, '56, The Dalles, Ore.

Carol Crippen, KAT, '57, Billings, received the Sigma Nu pin of Bill Drum, '57, Miles City.

## Serenades

The Phi Sigs serenaded Mikell Peck, Baker, Tuesday. She is pinned to Cal Lund, Baker.

Peggy Marlow was serenaded Monday night by the Sigma Chis in honor of her selection as Sweetheart of Sigma Chi and also her pinning to Roger Smith, Cleveland Heights, Ohio.

Dolores Guibault, DDD, Missoula, received a Sigma Nu serenade Monday, Feb. 6. She is pinned to Lee Bayley, Othello, Wash.

Darlene Glantz, KKG, Billings, who is pinned to John Skees, Great Falls, and Nancy Schilling, DG, Missoula, who is pinned to Paul Caine, Miles City, were serenaded by the Sigma Nus Monday.

## Engagements

Gerald Kemp, SAE, '57, Billings, is engaged to Sharon Bumgarner, Belt.

## House News

The SAEs sent violets to each of the sorority initiates.

The Alpha Phis held their Valentine dinner Sunday afternoon. Guests were: George Wetherston, Wayne Linell, Ray Moholt, John Seeverson, Mr. and Mrs. K. W. Erickson, John Morris, Dick Behan, Ron Hinman, Ann Ainsworth, and Ann Crocker.

The Sigma Nus will entertain the DGs Saturday afternoon.

The Alpha Phis were guests of the Sigma Nus Saturday afternoon at a Valentine party.

The Sigma Nus were guests at the Kappa house Monday evening for coffee.

The annual Sigma Nu Sweetheart dinner was held Sunday.

## Law Fraternity Judge To Speak at Dinner

Robert D. Jackson, national Supreme Justice of Phi Alpha Delta, law fraternity, will visit the MSU campus this Saturday.

Calvin Calton, president of the local chapter, said that Jackson will visit the law school and the law house. He will be guest speaker at a banquet in the Florence hotel at 6 p.m. Saturday. The banquet, to which all alumni are invited, is in honor of Jackson and P.A.D. pledges.

A welcoming committee will greet Jackson at the airport on Friday evening, said Calton. He added that this is the first time a high official of the fraternity has visited the MSU chapter.

Jackson graduated from Drake university in 1931.

In 1951 he was appointed Justice of District VII for the fraternity, and in 1954, at the national convention, became Supreme Justice.

Alumni wishing to attend the banquet should contact Lenard Zipperian, Missoula, P.A.D. secretary.

Save

**20%**

Cash & Carry Discount

On All Dry Cleaning

**CITY CLEANERS**

610 S. Higgins

Ph. 6-6614

## Committee Allocates \$300 To Rifle Team

The Budget and Finance committee allocated the Varsity rifle team \$300 to help defray expenses of three rifle matches in El Paso, Tex., Moscow, Idaho, and Seattle. The Publicity-Travel committee has allotted them \$100 with the stipulation that if they have any excess out of their expenditures, the first extra \$100 should be paid back to this committee.

George Lambros, Missoula, chairman of Publicity-Travel, reported that his committee planned to spend \$150 on sending university students to high schools throughout the state in conjunction with the planned College and Career days.

He also said that extra finances would be used for the High School leadership camp. He said that to promote it more expensive programs are being planned since this is the first time the University has had such a conference.

Bruce Crippen, Billings, ASMSU business manager, reported that calls for budgets would be sent out to the organizations on campus next week so the groups should be working on them now. They will be due March 7.

In regard to the controversy on payment of ASMSU officers, Crippen said that in order to pay these officers, there must be an which would increase the general increased enrollment next year which would increase the general fund, or appropriations to other groups must be cut.

## GUINNESS MOVIE TONIGHT

Alec Guinness stars in "The Promoter" at 7:30 p.m. in the University theater. Admission price is 25 cents.

Automatic pinsetters have been ordered for the bowling alleys at the Washington union.

## RENTALS!



## TYPEWRITERS

Portable Electric Standard

ADDING MACHINES  
CALCULATORS

**BUSINESS MACHINES CO.**

225 E. Broadway  
Phone 9-8995

## Low Oil Leases Cause Inadequate Schools—Olsen

"Many Montana schools are in danger of losing their accreditation because they cannot afford to adequately support themselves without sufficient state aid," said Atty. Gen. Arnold H. Olsen at a Young Democrat's club public rally.

Olsen, candidate for the Democratic gubernatorial nomination, said that there are inequalities in tax assessments in various counties so the counties that have a greater assessable value and better schools should help support the poorer counties.

In speaking on the school financing controversy, Olsen said that the oil royalty lease rate in Montana is only 12½ per cent and oil companies can obtain a permanent lease on public lands. Only Israel has this royalty system. He said that most states and nations have a 50-50 split of profits, although the oil industry says that the prevailing oil royalty in the world is 12½ per cent. Olsen asserted that this is untrue.

## GUADALAJARA SUMMER SCHOOL

The accredited bilingual school sponsored by the Universidad Autonoma de Guadalajara and members of Stanford University faculty will offer in Guadalajara, Mexico, July 2-Aug. 11, courses in art, creative, folklore geography, history, language and literature. \$225 covers tuition, board and room. Write Prof. Juan B. Rael, Box K, Stanford University, Calif.

## I Cannot Tell a Lie!



The Finest Malts  
and Hamburgers  
are at

**BROWNIE'S**

IN 'N' OUT  
Highway 10



## ENJOY THE FINEST

- ★ Dinner Dances
- ★ Luncheons
- ★ Receptions

For efficient service and gracious surroundings . . . try

**HOTEL FLORENCE**

"America's Finest Small Hotel"

Hungry? Have a hotdog  
Real Hungry? Have a beefburger  
Starved? Then have a

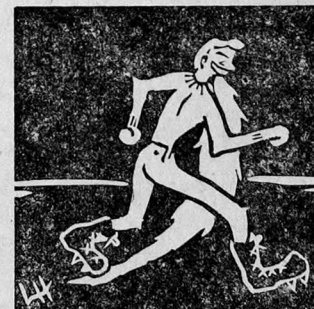
**Whopper-burger**

Enjoy-a-meal-on-wheels

at the

**93 Stop-n-Go Drive-in**

## in the mood for the FORESTERS BALL



Convocation  
next

Tuesday, Feb. 21

featuring

- ☆ Style Show
- ☆ Music of "Forestry Jugs"
- ☆ Guitar Duet
- ☆ Skit
- ☆ Spot Acts

Keep Tuesday in mind for the  
Launching of the Foresters Ball