

University of Montana

ScholarWorks at University of Montana

Montana Kaimin, 1898-present

Associated Students of the University of
Montana (ASUM)

3-1-1956

The Montana Kaimin, March 1, 1956

Associated Students of Montana State University

Follow this and additional works at: <https://scholarworks.umt.edu/studentnewspaper>

Let us know how access to this document benefits you.

Recommended Citation

Associated Students of Montana State University, "The Montana Kaimin, March 1, 1956" (1956). *Montana Kaimin, 1898-present*. 3195.

<https://scholarworks.umt.edu/studentnewspaper/3195>

This Newspaper is brought to you for free and open access by the Associated Students of the University of Montana (ASUM) at ScholarWorks at University of Montana. It has been accepted for inclusion in Montana Kaimin, 1898-present by an authorized administrator of ScholarWorks at University of Montana. For more information, please contact scholarworks@mso.umt.edu.

THE MONTANA KAIMIN

Montana State University, Missoula, Montana

Volume LVII Z400 Thursday, March 1, 1956 No. 73

Joan Hoff, Pat Gessner Chosen AWS Chiefs for '56

Joan Hoff, Butte, and Pat Gessner, Cascade, will take over the reins of Associated Women students.



JOAN HOFF

dents as president and vice-president after winning the final election yesterday.

Miss Hoff received 310 votes and her opponent, Carla Ingebo, Missoula, received 131. Miss Gessner obtained 273 votes to 168 for Mielck Peck, Baker.

Marcia Smith, Missoula, and Nancy Perry, Butte, were elected to the offices of secretary and treasurer. In the secretarial race Miss Smith received 237 votes while Carol Peterson, Lewistown, obtained 201. In the closest race of the election, Miss Perry obtained 228 votes and Liz Astle, Billings, got 212.

The newly elected president is a junior in the journalism school. She is editor of Venture magazine and an associate editor of the Kaimin. She is also a member of

Calling U

MSU Young Democratic club will hear an address by John W. Bonner, candidate for governor, at 7:30 p.m. tomorrow in LA 104.

Mu Phi Epsilon meets at noon in the Ravalli room of the Lodge.

Majorette corps is accepting registrations for spring quarter in Room 9 of the Music building. The proposed meeting time is 4 to 5:30 p.m. Wednesdays in the Women's center.

Inter Church Council presidents' meeting will be held at 6 p.m. tonight in Conference room 2 of the Lodge.

Pictures taken by Jumbo Hall's booth at the Mardi Gras may be picked up from 3-4:30 p.m. today and from 1:30 to 4:30 p.m. Friday.

Kaimin Claims Honor of Being State's First Paper to Print Ike's Decision

The Montana Kaimin held claim Wednesday to being the first Montana newspaper to announce President Eisenhower's decision to run for re-election.

Announcement of the decision came in over the United Press wire shortly before 9 a.m., just after the Kaimin front page had been locked up and the first copies printed. The presses were stopped and the front page torn out and a five paragraph bulletin inserted. By 10 a.m., 500 copies carrying the bulletin were distributed on campus.

Mr. Eisenhower made his intentions known during a Wednesday morning press conference. Before telling his decision, the President talked to reporters about other matters including the new Red Cross fund campaign and two bills pending in Congress. He termed his decision a last-minute affair, saying that he was still arguing with himself as late as Tuesday over the big question.

The Chief Executive refused to comment on a running mate. He told reporters that there would be time to discuss the vice presidency after a presidential candidate had been nominated.

Should Mr. Eisenhower, who will be 66 next October, be elected and serve out a second full term, he will become the first American president to be in office at the age of 70.

Kappa Alpha Theta, Theta Sigma Phi, womens journalism fraternity, Spurs and Alpha Lambda Delta, sophomore women's honorary.

Miss Gessner is a junior majoring in home economics. She is a junior sponsor, president of Home Arts club, a spur, and a member of Alpha Phi, of which she will be chaplain for the coming year.

The new secretary, Miss Smith, is a sophomore member of Delta Gamma, an associate editor of Sentinel, a spur, and a member of Alpha Lambda Delta. Miss Perry is a sophomore in history and a member of Alpha Phi. She is chairman of the AWS Lantern Parade committee.

Birmingham Judge Reinstates Co-ed At U of Alabama

A federal judge in Birmingham has ordered the University of Alabama to reinstate a Negro co-ed who was suspended because of mass student rioting.

Judge Hobart Grooms ordered the school to open its doors to 26-year-old Autherine Lucy by 9 a.m. Monday. He said, "No one can carve out a province in north Alabama" to defy the supreme court and its ruling against segregation.

Grooms cleared university officials of contempt of federal court charges brought against them by the co-ed. He said he did not find the officials "derelict in their duty" in barring Miss Lucy from the campus three days after her enrollment as the school's first Negro student.

Grooms told a packed courtroom that if the officials had not suspended her, Miss Lucy might have met "bodily harm or death" at the hands of some 3,000 rioters.

The judge took under advisement and promised a ruling by Friday morning on Miss Lucy's suit for equal boarding rights on the campus at Tuscaloosa.

The reinstatement ruling was made despite a warning by a university trustee that the co-ed will "probably be killed" if she returns to the campus. The witness said nothing can be done at the present time to "insure her safety."

Miss Lucy said, "It means only one thing; I will be back in school Monday morning."

Attorney General Olsen ...

... has taken the last procedural step to get the controversial Montana Power natural gas rate case before the state supreme court.

Polls Open in All Living Groups As Five Seek Judicialship Today

The primary election for Judicial council chairman is today with voting in all campus living groups and the Lodge. Polls will be open from 8 a.m. till noon and from 12:30 p.m. to 4 p.m.

Five men are competing for the position. They are Tim Burns, Red Lodge; Dave Burton, Chico, Calif.; Walt Gerson, Big Sandy; Cole MacPherson, Missoula; and Denton Vanderpool, McKnight Village, Pa. The two top vote getters will proceed to the general election March 8.

Bill Crawford, election chairman, said election procedures will be the same as in all other elections. Activity cards must be punched, a voter must sign his name on a typed sheet, and ballots must be turned in by 4:15 p.m.

Deadline for applications for membership on the council is Friday.

Due to the number of students who have applied for the council, Crawford said additional interviews will be held this Saturday at 1 p.m. All applicants who have not been interviewed will be contacted prior to this time, he said.

Requirements for membership on the council are as follows:

- (1) A 2.5 average must have been maintained by council members before their selection.
- (2) Council members must be of sophomore or junior standing.
- (3) The appointed members must have asserted interest to serve on the council.

Twelve students will be chosen for the council—six sophomores and six juniors. The sophomores will serve for two years and the juniors for one year.

Only Final Touches Remain On \$185,000 Health Center

Final touches are being put on the \$185,500 Health center, and plans are almost complete for movement from the old infirmary

early in spring quarter, according to T. G. Swearingen, maintenance engineer.

The modern building, which was to have been completed last September, will house all health service facilities and the Mental Hygiene center, now located in the temporary building behind the library.

"I will be very happy to get into the new building," said Harold A. Braun, health service director. The important thing about moving from the old infirmary on the corner of Maurice and University, said Braun, is that the old building is a fire hazard and has been condemned for some time.

The new Health center will have more efficient arrangements of working space and more room for taking care of sick students.

The new building will also give better surroundings for students who must stay at the infirmary for long periods of time, said Braun.

Added to the \$185,500 cost for the building is \$27,540 for furnishing the center. This figure will provide for 90 per cent of the equipment and will pay for X-ray equipment, new beds, and special equipment for providing surveys for chest X-rays.

In the two story building, the ground floor is divided into the ental Hygiene center, and a large open section to be used in emergency situations. The second floor is divided into two sections, with three wards in each section. Two large rooms in each section are ward rooms and one room is to be used for contagious disease cases. Lavatory facilities are located in the middle of the building.

Doctor facilities in the new location will be much better than in the old infirmary. A reception office and two doctors offices are located on the east side of the building.

Exterior painting and the landscaping will be completed in the spring when the ground thaws.

Butte Fans Plan Trip To Missoula

More than 500 Butte fans will entrain the night of March 3 for Missoula to witness the Colorado A&M-Montana basketball game at the Field House.

Publicity-Travel committee chairman George Lambros, Missoula, said that the Saturday game was originally scheduled as "Helena Booster" night but the Capitol City fans declined and Butte accepted the date in Helena's place.

The Butte night will be held in conjunction with Naseby Rhinehart festivities. In addition to these two highlights, the Colorado A&M tussle will be last appearance of Coach Frosty Cox's 1955-56 team.

"From all indications, we expect to have a near capacity crowd for Saturday's game," says Ticket Manager Bob Dundas. "Sales have been good this week and with the visit of 500 Butte people, seats will be at a premium."

Lambros has issued a call to all fraternities to provide a minimum of five cars each in order to transport the Copper City fans to and from the Northern Pacific depot and Field House.

An interesting sidelight to the booster night, is that the Butte people, of their own volition, raised the ticket price from \$5 to \$5.50 in order to establish a scholarship for the University.

After the game, the visitors will be feted at a dinner in the Cascade room of the Lodge. They will then return to Butte on the special train chartered for the trip.

Law School Trial Jurors To Begin Deliberations

The jury list for the first Law school trial this year, to be held March 5 at 7 p.m. in the law school, has been announced. Jurors should report to the third floor by 6:45 p.m.

The 12 names selected for the first trial are: Sonia Smith, Missoula, and Farrel Coffman, Minneapolis, Minn., KAT; Bonnie Hicks, Reed Point, and Lynne Rundle, New England, N.D., Brantly hall.

Arlene Lindemann, Richardton, N.D., and Jean Hollingsworth, Hamilton, KKG; Nelson Weller, Wausau, Wis., SN; Dan Blinn, Butte, Ray Tipp, Missoula, and Bill Todd, Billings, SX, and Margaret Stuber and Joan Waite, Billings, Brantly hall.

Bob Emmons, Anaconda, has requested that any of the above jurors who cannot appear get in touch with him at either the law school or the Law House.

Drama Seniors Will Present One-Act Plays

"Theater in the Round," a program of three one-act plays, will be presented in Simpkins Little theater tonight through Saturday under the direction of three senior drama majors. The curtain rises at 8:15 p.m. and admission is by guest ticket only. They can be obtained by calling LeRoy Hinz, assistant drama professor.

The audience sits on the stage of the theater around the acting area in "Theater in the Round."

Directors of the plays are members of a class in advanced direction and the plays are part of the requirement for a bachelor of arts degree in drama. Most of the actors are members of an elementary acting class.

Rising of the Moon

The first play, presented under the direction of Pat Irwin, Missoula, is "The Rising of the Moon" by Lady Gregory. Cast members are James Myhre, Missoula; Richard Howell, Hamilton; David Irwin, Missoula; and Harold Hansen, Rexford.

Browning Version

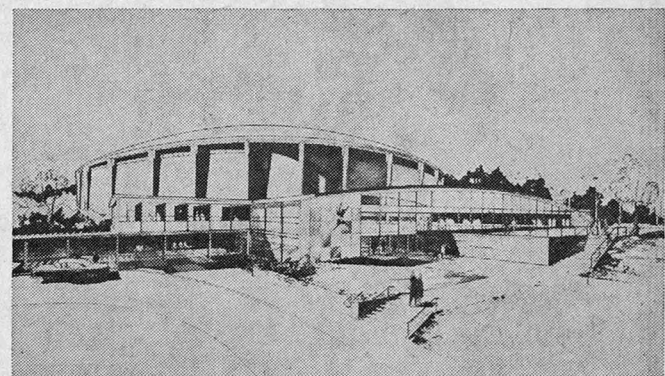
"The Browning Version" by Terence Rattigan is directed by Whitney Hines, Billings. Members of the cast are Bruce Cusker, Missoula; Lynn Ludlow, Mill Valley, Calif.; DiAnne Stephens, Billings; Al Esta, Butte; Joseph Nevin, Butte; Clifford Hopkins, Independence, Mo.; and Nina Skelton, White Sulphur Springs.

Twelve-Pound Look

The third play is "The Twelve-Pound Look" by Sir James N. Barrie. Marjorie Edmondson, Sidney, is director. In the cast are Marilyn Strickfaden, Great Falls; Doug Giebel, Big Sandy; Miles Coverdale, Anaconda; and Rhea Sherrburne, Scobey.

Working on the production staff are Jean St. John, Hamilton; Pat Harstad, Glendive; Marilyn Halland, Butte; Temple Brown, Port-au-Prince, Haiti; Gerald Wolfard, Scobey; Sheila Sullivan, Butte; Heather McLeod, Helena; and Ed Gron, Chicago, Ill.

MSC's Field House ...



This new health and physical education center being planned at Montana State college will seat 12,000. It is expected to house the second largest area in the world. It is to be as large as a standard football field. The field house opening is anticipated in time for the 1956-57 basketball season.

CHECKING ENDS MARCH 6

Checking registration materials will continue through March 6, according to Mrs. Emma Lommason, assistant registrar. Checking is being done in the basement of Main hall.

Classified Ads . . .

FOUND near Math building, a home-made dissecting kit. Kaimin business office. **73c**

HAYRIDES and sleighrides, Ph. 9-8247, 2-2409. **73c**

FOUND: Man's plaid scarf, 2 pair girls' gloves. Business Administration Office. **73c**

LOST: Argus C-4 Camera and flash during beard judging contest at the field house. G. Douglas Pittman, Craig Hall. **73c**

\$50 cash to individual selling my 1950 panel truck. For \$550. Also for sale oil stove, electric water heater, kitchen cabinets. Dave Boots, 8 Dawson Street. 9-2884. **74c**

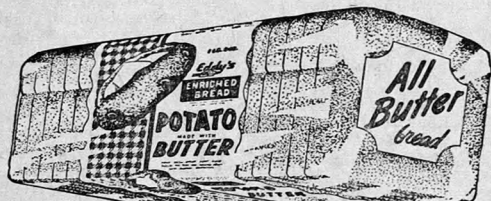
FOUND: Works to a Ladies Bulova watch. Field House Business Office. **74c**

LODGE GRILL

Fri. Luncheon Special 50¢

Cream of Tomato Soup
Toasted Cheese & Egg Salad
Sandwiches
Molded Lime Salad
Lemon Sponge Pudding
Choice of Beverage

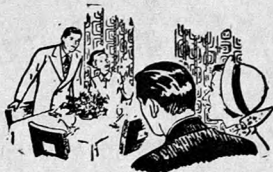
Breakfast—7:15-9 a.m.
Lunch—11:30 a.m.-1:30 p.m.
Dinner—5:30-7 p.m.

FIRST CHOICE

at your Friendly Grocer

None Finer - Anywhere

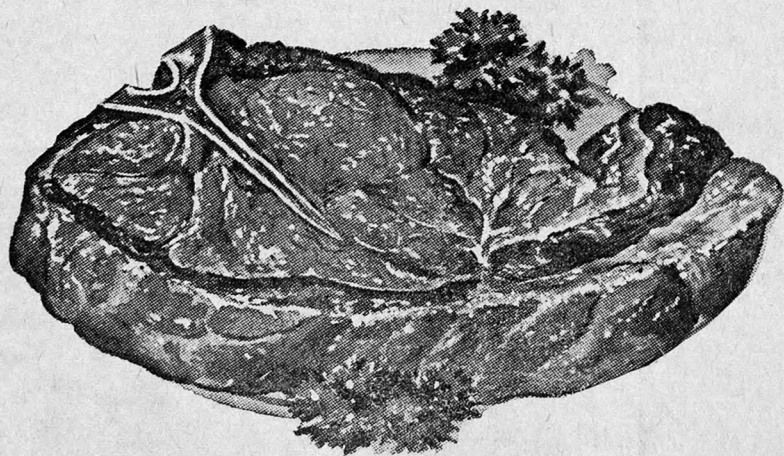
FINE FOODS
FINE LUNCHEONS
FINE SERVICE
FINE TO DINE



at

FLORENCE HOTEL

"America's Finest Small Hotel"

Guaranteed Steaks

4B's CAFE

Denver Man Buys Moonshine For Paint Thinner

The owner of a war surplus store in Denver almost got some moonshine from the government, for 15 cents a gallon.

Ernest Hagler bought 1700 gallons of grain alcohol from the Government last December. He wanted to use it for paint thinner. But the revenue found out the alcohol was 190 proof—and took the whole lot back.

MSC Country Bumpkins Buy 10,000 Acre Ranch

Helena (U)—The State Board of Examiners has approved a \$16,000 "good faith" down payment by Montana State College on a ranch. Money to purchase the 10-thousand-acre Row brothers ranch, near Norris, will come from the Morrill permanent fund under a mandate of the 1955 legislature.

A board spokesman said that on June 30, 1954, the fund contained more than one-million dollars.

In other action, the board has confirmed Board of Education approval of a \$75,000 land grant and student fund bond issue to provide the cost for an addition to the MSC library.

The Montana KAIMIN

Established 1898

Published every Tuesday, Wednesday, Thursday, and Friday of the college year by the Associated Students of Montana State University. Represented for national advertising by National Advertising Service, New York, Chicago, Boston, Los Angeles, San Francisco. Entered as second-class matter at Missoula, Montana, under Act of Congress, March 3, 1879. Subscription rate \$3.00 per year.

Printed by the University Press

Member
Montana State Press Association
Member, Rocky Mountain
Intercollegiate Press Association

Editor, Kim Forman; Business Manager, Virginia McBride; Associate Editors, Ron Erickson, Joan Hoff, Judy Weaver, Bill Larcombe; John Bansch; Photographer, Don Dooley; Circulation Manager, Dave Nelson; Adviser, Prof. E. B. Dugan.

Steam Valve . . .

Dear Editor:

As one who slept in old Men's Gym when it was used as a dormitory during the GI rush of 1946 et seq., I would like to register a loud snort against the current panic over "restrictive enrollment."

There were more than 3,000 students on the reservation then and only about half the buildings we now have to take care of 2,800 students. True, we existed without the benefits of an all-year skating rink or daily carillon concerts, and the campus was crowded as an anthill. But the administration and faculty had a spirit of "make do" and if you could crowd into the nooks and crannies where classes were held, you could get your education.

Today's dark talk about turning away students certainly can not rest on the claim that things are too "crowded" here. The argument that the University can't afford enough teachers might be valid but the remedies proposed in Tuesday's editorial make little sense—especially the proposal to lower standards so as to drive the better students away. That is like arguing that the head of a starving household should desert his family so there'll be one less mouth to feed.

There should be no talk of locking the gate to deserving students while we buy bowling alleys, plan a golf course and expand the coaching staff. The basic function of a University is to educate those who seek education. MSU should sell the Field House before it turns away a single student.

Furthermore, panel discussions and editorials are a waste of time. There is only one real solution: blackjack the Legislature into giving the University more money.

C. J. HANSEN

Save Time, Vote

Fifteen minutes spent voting today could save a lot of time later. It could save a quarter out of school, or longer.

The chairman of Judicial council must be neither a weakling nor a tyrant. A tyrant could exercise power without complete justification and a weakling could let responsibility fall back, by default, to the administration.

He should be mature and broad minded. He must combine legal efficiency with human qualities which have been missing at times on this campus.

Judicial council is completely new. It grew out of months of planning. For now it will handle illegal drinking or incidents which tend to degrade the University. It can grow into something better and finer with proper leadership. The student body should continue its intelligent work with this touchy situation by electing the best possible chairman.

Kim Forman, Editor

COAST to COAST - ALASKA to MEXICO . . . AMERICA'S FINEST FOOD CONFECTION

FLUFFY, GOLDEN BROWN

Spudnuts
Trade Mark
FOR YOUR NEXT PARTY

BROWNIE'S SPUDNUTS

Owned and Operated by MSU Students

138 N. Higgins Dial 3-3441

WIN A \$2000 PRIZE

in the exciting,
nation-wide
Towle
"LET'S PLAN A
DREAM PARTY"
CONTEST



The Towle Silversmiths are looking for the high school or college girl hostess who can plan the most imaginative party—who can set the prettiest table!

Come in today for complete details on how you have a chance to win any one of these fabulous prizes! It's fun! It's easy! Nothing to buy!

FIRST PRIZE—\$2,000 towards a scholarship to an accredited university or college of your choice. . . or two \$1,000 U. S. Savings Bonds.

SECOND PRIZE—Eight 6-pc. place-settings in the Towle Sterling pattern of your choice.

THIRD PRIZE—Four 6-pc. place-settings in the Towle Sterling pattern of your choice.

100 ADDITIONAL PRIZES—plus a special award to your school if you are a first, second or third place winner!

HURRY 'HURRY' GIRLS!



Towle "LET'S
PLAN A DREAM PARTY"
CONTEST
CLOSES APRIL 2nd
WIN
A \$2000 COLLEGE
SCHOLARSHIP

Get your entry blank here!

STOVERUD'S JEWELRY
Florence Hotel Bldg.

Ev Shelton's Wyoming 'Pokes Tangle With Grizzlies Tonight

By JOHN BANSCH

Montana opens its last week end of basketball play tonight against the Wyoming Cowboys at 8 o'clock in the Field House.

A win for Montana tonight will assure the Grizzlies of a .500 season even if they lost to Colorado A&M Saturday. Montana is currently 12 and 12 for the season.

If Frosty Cox's men win both games this week end and New Mexico loses its last two conference games, the Grizzlies and the Lobos will tie for seventh place in the Skyline. Both teams would have four wins and 10 losses.

Wyoming's attack is spearheaded by little Joe Capua. Capua has 584 points this year, a new Wyoming season high, and an average of 24.3 points per contest. The little guard set an individual scoring record for the Skyline earlier this year against Montana with 51 points.

The Cowboys from Laramie have won five games in the Skyline, including an upset of league-leading Utah. Wyoming has won

seven games over the entire season, compared with 17 losses.

Everett Shelton, Wyoming's fiery coach, has won seven Skyline championships in 15 years at Wyoming, an NCAA title, and won a national AAU championship before he came to Wyoming.

Shelton is a firm believer in defensive basketball. During his years as a coach his teams have been well-coached in the fundamentals of ball control, but they can fast-break if they have to.

Besides Capua, Wyoming's attack is led by sophomore Terry Eckhardt. Eckhardt broke into the 'Pokes' starting lineup in Jan-



EV SHELTON

uary, and he has been their most consistent scorer next to Capua. Other probable starters for Wyoming are Don Carlson, John Sharp, and either Ed Huse or Dave Bradley.

Wyoming defeated Montana 93-69 in Laramie Feb. 3. It was in that game that Capua set his conference scoring mark of 51 points. Eddie Argenbright, Zip Rhoades, and Russ Sheriff led the Montana attack. Argenbright scored 22, Rhoades 16 and Sheriff 15.

Montana will probably go with its usual starting lineup. Ed Bergquist and Al Dunham at forward, Sheriff at center, and Rhoades and Argenbright at guard.

Sport Slants

By UNITED PRESS

The son of West Point football coach Earl Blaik is taking a coaching job at Minnesota.

Robert Blaik, 25-year-old chip off the old block, will serve as assistant to Head Coach Murray Warmath at Minnesota. Just out of the army, young Blaik is to report at Minneapolis immediately.

PE Bowling Upset Narrows Margin

Business Administration's lead in the faculty bowling race was whittled to two points after Tuesday night's action. They now lead Natural Science by a 52-50 margin.

Physical Education bowlers upset the pace-setters by sweeping all three games of their match. The Natural Science team capitalized on the loss by rolling Education off the alleys 3 to 0.

In other league games, Chemistry-Pharmacy defeated Journalism 2 to 1 and Administration lost to Military Science 3 to 0.

A team series of 2599—high for the year—was rolled by the strike-happy Military Science squad. Second-place Chemistry-Pharmacy lagged far behind with 2322. Military Science also topped high team game, topping their old league record of 942, by rolling a 944 total. Business Administration followed with 840.

May and Rickett of the sizzling Military quintet won top honors in the high individual series department with scores of 531 and 529 respectively.

Their teammate, Koehler, rolled a 221 game to win high individual laurels.

Standings	Points
Business Administration	52
Natural Science	50
Military Science	49
Chemistry-Pharmacy	44
Administration	42
Physical Education	39
Journalism	35
Education	25

Capua Named to 'Small America'

Two Skyline basketball players have been named to the 1955-56 United Press "Small America" team. Wyoming's Joe Capua and BYU's Terry Tebbs have been picked on the team that has no one taller than 5-10.

Capua is the tallest player on the team, and he is also the leading scorer. The diminutive Wyoming guard is the leading scorer

in the Skyline conference.

Others on the team are Bill Ridley of Illinois, Jimmy Boothe of Xavier, and Cornell's Chuck Rolles.

**PATRONIZE YOUR
ADVERTISERS**

CALLING ALL GIRLS!



**WIN A
\$2000
COLLEGE
SCHOLARSHIP**

To win "LET'S PLAN A
DREAM PARTY" CONTEST

Get your entry blank here!

B & H Jewelry
Corner Higgins & Main

Wes Stranahan's
Missoula Typewriter
Company

TYPEWRITERS
ELECTRIC SHAVERS
SALES & REPAIRS

511 South Higgins



Zip Beverage Co.
Manufacturers and Jobbers

BAKKE MOTOR CO.

SAFE USED CAR BUYS

- ☆ 50 CHEV 2-Door
Standard Transmission, H — \$275.00
- ☆ 49 FORD Sedan
R, H, OD — \$275.00
- ☆ 49 PLY. SEDAN
Good Condition — \$295.00
- ☆ 46 FORD Sedan
R, H, — \$95.00
- ☆ 47 NASH
4-Door — \$85.00

BAKKE MOTOR CO.

343 W. Front

Phone 6-6673

INDUSTRIAL ACCOUNTING

**BOEING
AIRPLANE COMPANY**

**WILL CONDUCT PERSONAL INTERVIEWS
ON CAMPUS**

March 2

Boeing has many desirable positions open in its controller's division for graduating and graduate students. These opportunities include cost accounting, general accounting, sub contract and termination audit...and they all offer better than average pay with excellent advancement possibilities.

Boeing needs Accountants, Statisticians, Production Management majors and students who want to specialize in cost estimating and analysis.

Personal interviews will cover details about specific positions, climate, living conditions, recreational opportunities, housing, schooling, etc. and of course, all the standard benefits that Boeing offers.

You'll want the facts in detail; facts about the future...so come and learn what Boeing has to offer you.

For personal interview appointments—consult your

Placement Office

**BOEING
AIRPLANE COMPANY**
SEATTLE • WICHITA

Wildlife Meet to Hear MSU Professor's Paper

Melvin Morris, professor of forestry, and Dr. John T. Craighead, associate professor of zoology, leave Tuesday to attend two meetings at New Orleans. Dwight Stockstad, Montana Fish and Game department biologist, will also make the trip.

A cooperative meeting will be held March 2-4, and the 21st annual North American Wildlife Conference will be March 5-7. Dr. Craighead will deliver a paper which he and Stockstad have prepared on their research on the Canadian goose in the Flathead Valley.

Findings in the study, said by Dr. Craighead to be one of the most intensive ever conducted on the Canadian goose, are being rapidly utilized in the management of the birds by the Montana Fish and Game department.

Folk Songs and Dances From 21 Nations Given at Banquet

Folk songs and dances by foreign exchange students from 20 nations highlighted the International Night banquet last night in the Yellowstone room of the Lodge sponsored annually by the Student Christian association.

United Nations flags decorated the Yellowstone room and souvenir place cards embossed with symbols of countries represented were on the tables.

Prof. William O. Thweatt of the economics department was guest speaker. "People, Places and Problems in the Middle East," was the subject of his talk. To help illustrate problems in the Middle East, Thweatt showed slides taken while he taught for three years at the American university in Beirut, Lebanon.

Ken Travis, St. Charles, Ill., and Rodger Baty, Bozeman, co-chairmen of the World Affairs Commission for SCA, and chairmen of the banquet planning committee, were assisted by Miss Jean Ross, assistant director of the school of religion.

Some of the entertainment by exchange students included a Chinese folk song by Jo Yao of Formosa, Scandinavian student songs by Barro Christofferson of Sweden, Nina Heingberg of Denmark and Bjorn Reusch of Norway. Joaquina Callizo from Paraguay and Felix Latuszynski danced a tango and a samba.

A group of Hawaiian students danced Hawaiian dances and pre-

sented folk songs of their country. Miss Ross gave her interpretation of the Highland Fling. Jamie Acosta Madiedo of Colombia was master of ceremonies for the international songs and dances.

Guests of honor were Dr. and Mrs. Carl McFarland, Mr. and Mrs. Frederick Yu, Miss Gladys Ching, Mr. and Mrs. Burt Hansen, Mrs. M. E. Johnson, and Dr. and Mrs. Robert C. Line.

Master of ceremonies for the banquet was Norman Nelson, Anaconda, who also directed American-folk singing during the dinner.

Church Fellowship Active on Campus For Many Years

Among the several religious organizations on the campus, the University Congregational fellowship is small but active. The fellowship was founded 33 years ago with the church and has been active on the campus ever since.

Officers of the 10 to 15 regular attending members are Beth Briggs, Missoula, president; Ed Focher, Ballentine, vice-president; and Lynne Rundle, New England, N.D., secretary-treasurer.

In the past, the group has met at the church Sunday evenings for worship, group discussions, recreation, and refreshments. Last fall quarter they produced and presented a variety show to raise money for a speaker for Religious Emphasis week. The show was successful and with the money raised they brought the Rev. Ken Stokes from the Congregational church in Miles City to Missoula.

Once a year, the group gives the church service at the University Congregational church. This year, they combined forces with the high school fellowship group to present the service. Jim Beadle, Red Lodge, and Miss Briggs represented UCF at the service.

In the future the fellowship hopes to sponsor various speakers from the University to speak at the meetings.

GRILL MOVIE FEATURES SUN VALLEY ACTIVITIES

A free color film, "Sun Valley Time," is showing in the Grill tonight and tomorrow at 7. The movie pictures all the activities offered at Sun Valley during the four seasons of the year. A descriptive narration is given during the 30-minute showing by Lowell Thomas, news commentator.

Flute Recital Given By Roberta Farley

Roberta Lucke Farley, Havre, presented a flute recital Tuesday evening in the music school auditorium. Mrs. Farley was accompanied by Donna Terpening, Midwest, Wyo., at the piano.

Others in the program were John Fessenden, bassoonist and the MSU string ensemble, directed by Monroe DeJarnette, music school graduate assistant.

Mrs. Farley, a graduate from Havre high school, has been studying flute for nine years. At 16 she attended Vandercook college of music in Chicago during the summer session, where she received the gold cup, "best student" award.

Mrs. Farley played on the Horace Heidt show at 16, won superior rating at all high school contests, and attended the Northwest conference two years. She also

EIGHTH-GRADER WED

Fourteen-year-old Clara Hartwell will be away from her eighth grade class at Oxnard, California, for a few days.

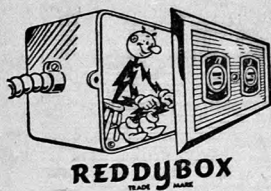
She has good reason. She and her 16-year-old husband, Robert Mims, are honeymooning at Santa Barbara. They were married with their families' approval. Clara plans to return to the eighth grade after a one-week honeymoon. Her husband is looking for a job as a truck driver and will attend night school to get a high school diploma.

studied in Chicago under Arthur Kittl of the Chicago Symphony orchestra.

During the summer of 1954, Mrs. Farley studied in New York City with Julius Baker, whom she says is considered as one of the greatest living flutists. She is a member of the MSU Jubileers.

HEAR
EDDIE FISHER
TONIGHT
KBTK—8:30 to 8:45
YOUR
COCA-COLA BOTTLER

You Flick
the switch—
he's Reddy
to hit
the ball...



**THE MONTANA
POWER CO.**

Mardi Gras Dance Damage Excessive

The Mardi Gras dance this year did a lot of damage to Yellowstone room in the Lodge, but according to Earl W. Martell, director of student activities-facilities, there will be a Mardi Gras dance next year.

In the future, a closer check will be kept on advanced plans in preparation for the Newman club activity, said Martell. The main damage was to the floor. Any liquid on the floor will warp it because it is over-sensitive to liquids. It is a special floating floor built for dancing.

Water from some of the Mardi Gras concessions did considerable damage to the floor, Martell said.

Other damage done during the dance included a broken stained glass window and nails driven into the dance floor.

KAIMIN CLASS ADS PAY!

**You Are Always
Welcome at the**
**WESTERN MONTANA
NATIONAL BANK**
"Friendly Service Since 1889"

BON TON
Hamburger & Hot Dog
BUNS
HEARTY EATING
BON TON WHOLESALE NUTRITION APPETIZING
FOR PERFECT EATING
BON TON
LUNCH BOX treat!

Processors and Distributors
of top quality meat
and meat products

John R. Daily, Inc.

115-19 W. Front

5-5646

3-3416

BIDS

for
dance band music
for the

MILITARY BALL

April 14

being accepted

CONTACT

James Kern Garner Dick, Ph. 9-2917



FOR PERFECT CLEANING

All Formals Returned in Plastic Bags
— 20% Cash & Carry Discount —

CITY CLEANERS

610 S. Higgins

Ph. 6-6614

MUSIC SCHOOL

presents

Symphonic Band, Justin Gray, Director

with

Rafael Mendez, trumpet soloist



RAPHAEL MENDEZ

**University
Theatre**

**Sunday, March 4
8:15 p.m.**

*Matinee
Clinic-Symposium*

Mr. Mendez and Mr. Gray will discuss and comment with you.

Clinic - Symposium Sunday, 3:00-4:30

Evening Performance 8:15 p.m.

Tickets: Music Center, Orvis Music
School of Music, MSU Lodge

Your Exclusive
Keepsake Jeweler

Keepsake
DIAMOND RINGS
Perfect
300.00
CORONADO
Wedding Ring \$150.00
Guaranteed by
Good Housekeeping
IF NOT AS ADVERTISED THEREIN
FED. TAX INC.

Bob Ward & Sons
321 N. Higgins
MISSOULA