

University of Montana

## ScholarWorks at University of Montana

---

Montana Kaimin, 1898-present

Associated Students of the University of  
Montana (ASUM)

---

3-2-1956

### The Montana Kaimin, March 2, 1956

Associated Students of Montana State University

Follow this and additional works at: <https://scholarworks.umt.edu/studentnewspaper>

**Let us know how access to this document benefits you.**

---

#### Recommended Citation

Associated Students of Montana State University, "The Montana Kaimin, March 2, 1956" (1956). *Montana Kaimin, 1898-present*. 3196.

<https://scholarworks.umt.edu/studentnewspaper/3196>

This Newspaper is brought to you for free and open access by the Associated Students of the University of Montana (ASUM) at ScholarWorks at University of Montana. It has been accepted for inclusion in Montana Kaimin, 1898-present by an authorized administrator of ScholarWorks at University of Montana. For more information, please contact [scholarworks@mso.umt.edu](mailto:scholarworks@mso.umt.edu).

# THE MONTANA KAIMIN

Montana State University, Missoula, Montana

Volume LVII Z400

Friday, March 2, 1956

No. 74

## Famous Trumpeter Will Be Guest Artist at Band Concert

Rafael Mendez, trumpet soloist, will be the guest artist on the University Symphonic band concert Sunday at 8:15 p.m. in the University theater. For 50 cents students may attend a clinic-symposium to be conducted by Mr. Mendez at 3 p.m. in the University theater.

Mr. Mendez has arranged the trumpet solos on the concert program. He has made musical history by establishing new standards of performance for the trumpet. At the age of six, Mr. Mendez was amazing audiences. It is interesting to note that he played for Gen. Pancho Villa during the Mexican revolution.

Acclaimed for his performances, Mr. Mendez has also appeared on radio, television, stage, screen, and records. The Denver Post says, "The trumpet playing of Rafael Mendez has triumphant aspects in the amazingly sure technique which permit such rapidity of playing, the coordination of fingers, lip work and breath control, and the firm, perfectly formed tones."

The clinic-symposium at 3 p.m. will be an informal affair. Mr. Mendez will show his special techniques and tell about the trumpet and how to play it.

The Symphonic band, under the direction of Justin Gray, assistant professor of music, will present numbers by contemporary composers. The program opens with "Marcha 3 De Febrero" by Simeon Roncal. The 85-piece band will

have as another feature a typewriter solo.

"It is probably the first time we have ever had a solo on the program that was not a musical instrument," said Gray. The number is Leroy Anderson's "The Typewriter."

Other selections on the program include: "Beguine for Band," by Glenn Osser; "Pageant," by Vincent Perischetti; and "Chorale and Alleluia," by Howard Hanson.

The profits from the concert go to a special band scholarship fund.

## Male Quartet Sings In Kalispell

Excerpts from "Carousel" will be given by eight music students tonight before the Kalispell Rotary club, announced Prof. John Lester, general chairman of the all-school production.

The male quartet, which includes Dan Hoffman, Billings; Lester Smith, Missoula; Jerry Nordstrom, Red Lodge; and Robert Colness, Red Lodge, will also perform a few novelty numbers with Blanche Peterson, Columbus, accompanist.

Colleen Baker, Beach, N.D.; Beverly Schessler, Missoula; Elene Ishmael, Ronan; and Dick McDevitt, Kalispell will also give selections from "Carousel," which is scheduled for May at MSU.

Professor Lester said that tomorrow all final selections for the all-school production will be made.

## Dave Burton, Walt Gerson Win Primary As Judicial Vote Recounted Four Times

Dave Burton, Chico, Calif., with 366 votes was top vote getter for the position of Judicial council chairman in the primary elections Thursday. In one of the closest races in ASMSU election history, Walt Gerson, Big Sandy, defeated Cole MacPherson, Missoula, by one vote—259 to 258, which won him a place on the ballot with Burton for the general election next week. Four recounts were taken because of the closeness in the Gerson, MacPherson race.

Other candidates were Denton Vanderpool, McKnight Village, Pa., 83; and Tim Stuart Burns, 72. James Wood, Valley City, N.D., topped a list of write-in candidates with 58 votes.

A total of 1,108 students voted in the election.

Burton and Gerson will advance to the general election which will be March 8. At the same time as the election for Judicial council chairmen, four ASMSU constitutional amendments will be voted on. They are: elimination of class officers, increasing membership on Central board, elimination of the CB alumni representative, and a provision that would require Central board to have two-thirds of its members present for a quorum.

Bill Crawford, Missoula, election chairman, said that the amendments require a vote of at least 40 per cent of the MSU student body. He said he hoped that the

majority of the MSU student body would vote in the election.

Crawford suggested that the same people be designated as poll workers in the precincts for the general election. He said a list of the poll workers must be turned in at 4 p.m. Tuesday. Ballots are to be picked up at 4 p.m. Wednesday.

Polling hours for the election will be 8 a.m. to 12 p.m. and 12:30 p.m. to 4 p.m. Ballots must be turned in to the election headquarters in the Lodge by 4:15 p.m. Thursday.

The same election procedures will be used in the primary—the voter must have his activity card punched and must sign his name on a typed sheet.

Crawford said the name of the 12 members on the Judicial council should be released sometime next week.

## TUESDAY IS DEADLINE FOR SPRING REGISTRATION

Registration deadline for spring quarter is 4:30 p.m. Tuesday afternoon, Mrs. Emma Lommason, assistant registrar, has announced.

A penalty fee of \$2 will be charged all students in residence who do not turn in their cards by March 6, Mrs. Lommason said.

## OIL GEOLOGIST TO SPEAK ON CAMPUS NEXT MONDAY

Mr. N. Wood Bass of the U. S. Geological Survey, Denver, will speak at 8 p.m. Monday in the Chemistry-Pharmacy auditorium on the subject of "Comparison of modern shorelines with oil-bearing sand lenses in Mid-Continent and Denver Basin, with consideration of evidence for oil migration from crude oil composition." The public is invited to attend.

Bass is currently a staff geologist in the Fuels Branch of the U. S. Geological Survey. He has degrees from Kansas State College and George Washington University.

## Calling U

Montana Forum will meet at noon today in Conference room 1 of the Lodge.

Westminster Foundation will meet at 5 p.m. Sunday at the First Presbyterian church. Officers will be elected.

Wesley Foundation meeting Sunday, at 5:30 p.m. in the Methodist church.

Venture staff meeting Monday at noon in the Lodge.

Majorette corps is accepting registrations for spring quarter in room 9 of the music building. The proposed meeting time is 4 to 5:30 p.m. Wednesday in the Women's center.

## 300 Butte Boosters Expected for Naseby Rhinehart Day

A near-capacity crowd swelled by more than 300 basketball fans from Butte is expected to witness the final home game of the 1956 Grizzlies as they entertain the Colorado Aggies in the Field House tomorrow night. In honor of MSU's athletic trainer, the night has been proclaimed Naseby Rhinehart Day.

Publicity-Travel committee has issued a call to all fraternities to provide a minimum of five cars each for transportation of Copper City boosters to and from the Northern Pacific depot. They are scheduled to arrive at 6 p.m. and board the train for the return trip at 11 p.m.

By GENELL JACKSON

"It's the way a boy says 'Gee, thanks Nase' when I cut off a hang nail or bandage a sore knee that makes me feel that my work is right and that I've accomplished something," Naseby Rhinehart said, leaning back in his training room chair during a rare free moment.

Mr. Rhinehart has been the MSU athletic trainer for 20 years, taking over the position shortly after his graduation in 1935. In those 20 years, he has worked with hundreds of athletes and quite a number of coaches. He has built a training room that ranks with the Skyline's best. But more than that, his association with people have made him one of the most popular men, not only on this campus, but throughout the Skyline conference.

"He sits next to Frosty on the bench, and he's the first one a boy looks to when he's in pain," one of his associates commented. "For my money, he's about the greatest guy I've ever worked with."

### In Appreciation

A token of appreciation for the work Nase, as he is known to everyone, will be given Saturday when fans and friends gather at the Field House for "Naseby Rhinehart Night." A chartered train will bring Butte fans and a record Field House crowd is expected.

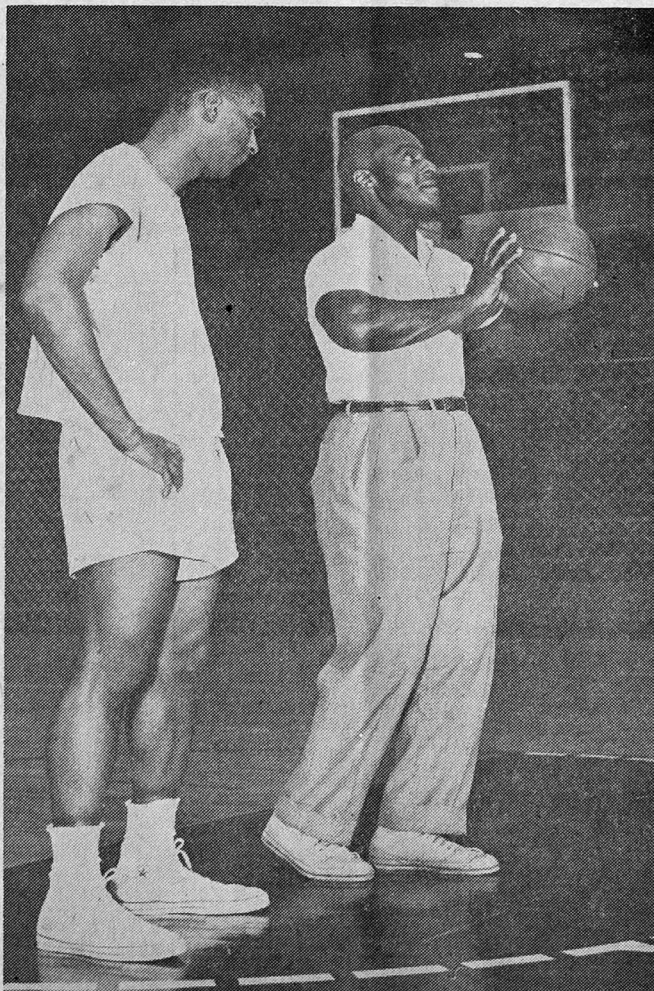
"I first heard about 'Rhinehart Night' from my wife," the trainer grinned. "She was sort of peeved at me because I hadn't told her. I guess I was the last person to learn about the honor," he said.

"This is the sort of thing a man reads and dreams about," said Nase. "When it actually happens to you, there just aren't any words."

It will be something like a "This Is Your Life" program for Mr. Rhinehart. The man instrumental in sending him to Montana, family members, athletes through the years, former teammates, and friends will be on hand.

"I'll be especially anxious to see my old friend Mr. J. W. Dorsey," Mr. Rhinehart commented. "He's

## Nase Jr. Takes a Lesson . . .



the one who has inspired me all along."

"I first met Mr. Dorsey when I was a high school sophomore in Milwaukee. He had just graduated from the MSU law school, but Negroes couldn't set up a practice in Montana. He loved this state more than anything, and he used to say:

"Nase, when you graduate, you're going to go to Montana and play football and win for the Grizzlies."

"I'd say, 'Gee, that'll be swell Mr. Dorsey,' but it was all lip service. Deep down I thought 'You'll never get me that far from home'."

### Nase Comes to MSU

But young Rhinehart, through the efforts of the Dorseys, did graduate from high school and did come to Montana.

"I was one of nine children and the only one to graduate from high school," he reflected. "I owe it to Mr. Dorsey and my luck in athletics."

There are few followers of Montana teams that haven't come in contact with the Rhinehart achievements, both in football and track. He is still listed as an all-time Grizzly great. But his proudest moment came when he was a senior.

"Every year they awarded a Grizzly trophy to the player who was the best in scholastic ability, performance, character, and service. I never dreamed of getting it. You can imagine how I felt the day my name was called and I walked up on the stage to receive the Grizzly trophy."

### Proud Moments

Looking back on his life, Mr. Rhinehart can recall many proud moments. Quite naturally, many of these are centered around his four children.

"I'll never forget when Pete (Naseby Jr., MSU sophomore) was born. Why there wasn't even room for him in the cradle with all the footballs, baseballs, and other athletic equipment I had waiting for him. He couldn't be anything but an athlete!"

"I nearly burst with pride during the Colorado A&M game last fall. It was Dad's day, and Pete was chosen lineman of the day."

His oldest daughter is a Missoula high school cheer leader and another son, Sidney, 8, one of the staunchest Spartan fans to be found anywhere.

"Every once in a while he'll say, 'You know Dad, I bet our Spartans could beat your Grizzlies. We got a pretty strong club this year!'"

The youngest Rhinehart, a four-year-old daughter, is already looking forward to her cheer leading days.

"Yes, a man has a lot to be thankful for," Rhinehart said, glancing around his training room. "And I sure hope we pack that Field House Saturday. This will probably be the biggest day of my life."



## The Montana KAIMIN

Established 1898

Published every Tuesday, Wednesday, Thursday, and Friday of the college year by the Associated Students of Montana State University. Represented for national advertising by National Advertising Service, New York, Chicago, Boston, Los Angeles, San Francisco. Entered as second-class matter at Missoula, Montana, under Act of Congress, March 3, 1879. Subscription rate \$3.00 per year.

Printed by the University Press  
Missoula, 55

### Member

Montana State Press Association  
Member, Rocky Mountain  
Intercollegiate Press Association

Editor, Kim Forman; Business Manager, Virginia McBride; Associate Editors, Ron Erickson, Joan Hoff, Judy Weaver, Bill Larcombe; John Bansch; Photographer, Don Dooley; Circulation Manager, Dave Nelson; Adviser, Prof. E. B. Dugan.

### HUFF TEACHERS AGENCY

WESTERN STATES  
Also Alaska, Hawaii, Foreign  
Exceptional Teaching Opportunities  
— Now for Mid-year or Fall —  
2120 Gerald Ph. 6-6653  
40 Years Service — Member NATA

### Need a Wedding Gift?

Select a practical gift from  
our stock of housewares—  
Dishes and Crystalwares

Barthel Hardware

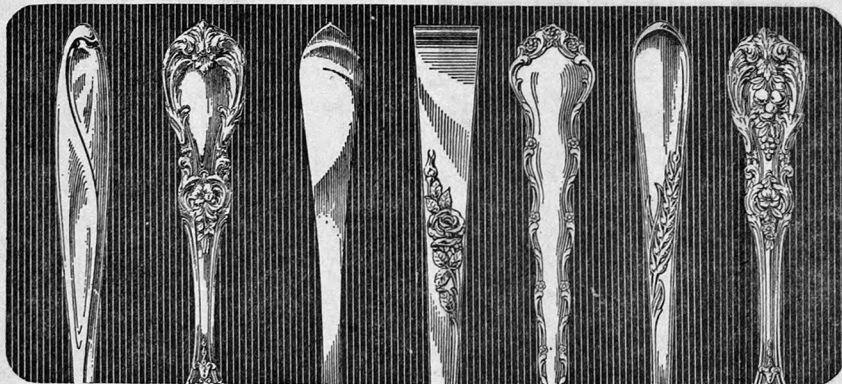
## BIDS

for  
dance band music  
for the  
**MILITARY BALL**  
April 14

being accepted  
CONTACT

James Kern Garner Dick, Ph. 9-2917

**We have your favorite sterling pattern  
as featured in  
REED & BARTON'S  
"SILVER OPINION COMPETITION"**



Do these patterns look familiar? Then you've no doubt seen them on bulletin boards throughout your campus. They're featured in Reed & Barton's "Silver Opinion Competition" now being conducted at your college. Stop in soon and see how beautiful these patterns are in actual solid silver. Can't tell — it may be all the inspiration you need to win one of the valuable scholarship prizes!

**B and H Jewelry Co.**

See Pat Gessner for entry blanks  
and further contest information

## Steam Valve . . .

Editor  
The Montana Kaimin  
Montana State University  
Missoula, Montana

Dear Sir:

I observe an article in your issue of Friday, February 17, quoting statements made by Attorney General Arnold H. Olsen at a Young Democrats club public rally, which also says "In speaking on school financial controversy, Olsen said that the oil royalty lease rate in Montana is only 12 and one-half per cent and oil companies can obtain a permanent lease on public lands."

"Only Israel has this royalty system. He said that most states and nations have a 50-50 split of profits, although the oil industry says that the prevailing oil royalty in the world is 12 and one-half percent. Olsen asserted that this is untrue."

It is not true that the oil royalty lease rate in Montana is only 12 and one-half per cent. It is not true that oil companies can obtain a permanent lease but they can obtain a lease from the state which will run for a primary term and so long thereafter as production is obtained in paying quantities.

It is not true that "most states and nations have a 50-50 split of profits." As to the states in the union, 35 have oil production or have made oil leases.

In every state in the union, these leases run for a primary term and when production is obtained so long thereafter as it is produced in paying quantities, with the exception of non-competitive leases in Indiana which are renewable after discovery for a period of ten years and so long

## WAVE OFFICER HERE TO HOLD INTERVIEWS

Lt. M. Lois Williamson, WAVE procurement officer for the U. S. Navy is on campus today to explain the various WAVE officer programs. Any interested girls have been asked to contact Miss Harriet Miller, acting associate dean of students, for an interview date.

thereafter as production is obtained.

Other exceptions are: Virginia, which has a five year lease, continuously renewable, and Washington, which has a five year lease renewable for a term of twenty years and regularly thereafter.

In every one of these states, the minimum royalty is 12 and one-half per cent, with the exception of Wyoming where the minimum is five per cent, and California on competitive leases, (that is, leases in proven territory,) where the minimum is 16 and two-thirds per cent.

In California on non-competitive leases, (that is, wildcat,) the royalty is fixed at 12 and one-half per cent. In eleven states the royalty is fixed at 12 and one-half per cent without modification and in three other states including California, the royalties on non-competitive leases are fixed at a flat 12 and one-half per cent.

In all other states, the royalty is fixed at a minimum of 12 and one-half per cent, in most cases fixed by lease terms. Federal non-competitive leases have a fixed royalty of 12 and one-half per cent.

Alberta has a minimum of five per cent and a maximum of 16 and two-thirds per cent, and Saskatchewan has a minimum of five per cent and a maximum of 15 per cent.

On the other hand, Montana has a minimum of 12 and one-half per cent which is fixed as to the first 3,000 barrels per month; thereafter, the State Land board may exact any royalty it sees fit, and the present practice is to exact 17 and one-half per cent on the next 3,000 barrels per well per month, and 25 per cent on the balance; and Montana now has five state leases which are paying in excess of 12 and one-half per cent royalty.

As to the so-called "50-50 agreements in foreign countries," these

## WUS PUBLICITY PEOPLE APPOINTED YESTERDAY

Chub Brown and Carol Crippen, chairmen of the Publicity committee for the World University Service drive, April 10-14, appointed committee members Wednesday.

They are Carla Clausen, Missoula; Jerry Nordstrom, Red Lodge; Gerald Nordmark, Loraine, N.D.; Bud Leuthold, and Greta Peterson, Billings; Freda Smith, Lewistown; Judy Youngmeyer, Calgary, Alberta, Can.

The committee will start making posters next week.

agreement invariably relate to a split of profits after allowing the producer credit for taxes and all other payment to the government, which is a far better arrangement than is enjoyed in this country, where the producer pays 12 and one-half per cent royalty and then innumerable taxes in addition, not to mention a 52 per cent of his profits in the form of income tax.

Since your paper published the statements quoted, I hope you will see fit to publish this letter in order that the truth may be known.

Very truly yours,  
LaRue Smith, Sr.

## SCA to Hold Services; Will Last to Easter

The Student Christian association is sponsoring Lenten services every Tuesday and Thursday until Easter in the conference room of the Arts and Crafts building. The services will begin at 9 p.m. and last for 15 minutes.

Each church group on the campus will take a service which will include brief meditation, prayer, and music. No services will be conducted over the spring vacation.

Jean Ross, assistant director of the Affiliated School of Religion, said that the meetings are open to all students and not limited to those directly connected with church organizations.

# Lucy's

MISSOULA'S  
Home Furnishing Store  
for  
66 years

## YOU NAME IT — WE'VE GOT IT

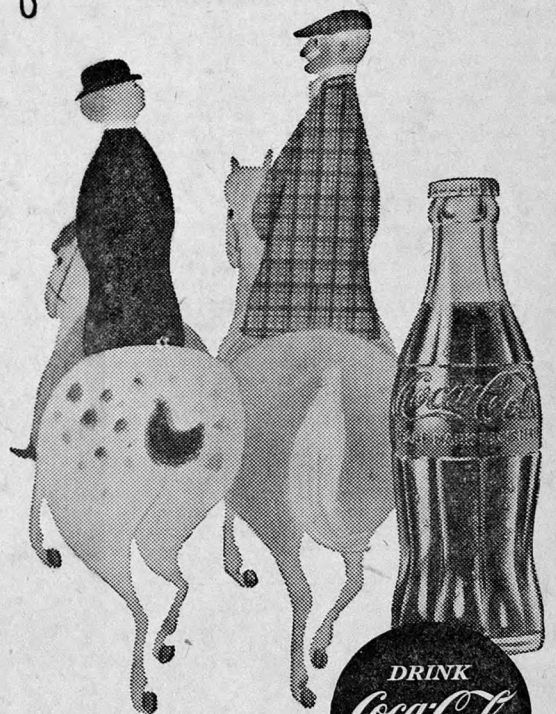
burgers  
cheese sand  
tuna sand  
egg salad  
pizzaburgers



sundaes  
hot fudge  
black & white  
coke  
coffee

at the  
**Whistle Stop**  
HIGHWAY 93

"I originally came  
from Atlanta"



That's where the pause that refreshes with ice-cold Coke began. Now it's enjoyed fifty million times a day. Must be something to it. And there is. Have an ice-cold Coca-Cola and see...right now.

BOTTLED UNDER AUTHORITY OF THE COCA-COLA COMPANY BY  
COCA-COLA BOTTLING COMPANY OF MISSOULA  
"Coke" is a registered trade-mark. © 1955, THE COCA-COLA COMPANY



## Free Throws Give Montana 59-56 Victory Over 'Pokes

By JIM BERRY

Four free throws in the final hectic 65 seconds gave the Montana Grizzlies the needed margin to edge the Wyoming Cowboys 59-56 last night.

A Montana lapse, midway in the second half, nearly gave the Cowboys a victory. MSU saw a nine point, 44-35, lead dwindle until the Pokes took a slim 54-51 advantage with less than four minutes remaining. Otherwise, the Silvertips played a sharp game.

Last night's tussle was the second time that Montana had ever beaten the Cowboys in any sport. In a similar classic last year Montana edged the Wyoming crew 44-42, also with a free throw windup.

### 'Tips Lead at Half

Snappy ball handling combined with a shifting man-to-man defense by the Silvertips gave them a 28-27 lead at the half. Halfway through the second period, however, the Montanans couldn't seem to find the range and Wyoming capitalized on all the mistakes to grab the lead.

Adding more than his share to the Grizzly lapse, was Wyoming's Joe Capua who dropped in 24 points to lead his squad. The five foot-ten inch Capua came up with 18 rebounds and converted many into Wyoming points. About half of Capua's shots were made from the key.

### Argenbright Hits 19

Leading the Montana offense was Ed Argenbright with 19 counters. It was Argenbright who, with the score 57-56 for Montana, iced the game with two free throws with less than a half minute of play left. Al Dunham had sunk two gift tosses less than a minute earlier to give the Grizzlies the one point advantage.

Sharing the spotlight with Ar-

genbright, was Zip Rhoades who combined fine ball handling and floorwork with an accurate eye to score 14.

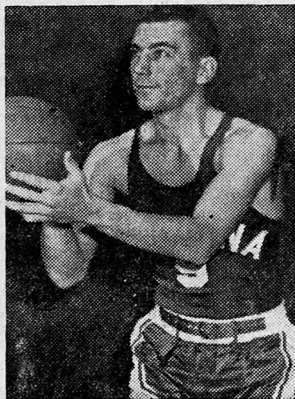
The shooting percentage of the two teams were quite close from the floor. The 'Tips hit 19 out of 52 shots for a .365 average while Wyoming tallied 25 out of 70 to average .357. At the free throw line, however, Montana had a .677 average by hitting 21 out of 31 compared with their opponent's 6 of 16 record for a .375.

Montana	fg	ft	pf	tp
Argenbright, g	6	7-8	3	19
Rhoades, f	7	0-0	2	14
Sheriff, c	2	3-6	3	7
Bergquist, f	2	5-7	3	9
Dunham, g	2	6-10	1	10
Totals	19	21-31	12	59

Wyoming	fg	ft	pf	tp
Capua, g	12	0-6	2	24
Bradley, f	3	5-7	5	11
Eckhart, g	5	1-2	0	11
Campbell, f	0	0-1	2	0
Sharp, g	2	0-0	3	4
Luman, g	0	0-0	0	0
Carlson, f	3	0-0	5	6
Totals	25	6-16	17	56

Halftime score — Montana 28, Wyoming 27.

### Steady Eddy . . .



...Argenbright, 5-10 senior from Cut Bank, joins Ed Bergquist in his last game at MSU. Ed has been the Grizzlies' leading scorer this year and is best known for his long set shots.

### Sport Slants

A college from the hills of Kentucky has finished its regular season with the highest scoring average in the history of major college basketball.

Latest NCAA figures show Morehead State with an average of 96.5 points per game in 25 starts. Morehead State is tied with Tennessee Tech for the Ohio Valley championship. The nation's top-ranked team, San Francisco, also remains first in defense by allowing an average of only 50 points per game.

## Turner Hall Wins Basketball Title

Turner hall emerged champions of the women's intramural basketball tournament with a 50-32 win over Corbin hall Tuesday evening. Turner was the only undefeated women's team of the season.

Play was much closer than the final score would indicate. Corbin took an early lead, and the first half was a see-saw thriller. But the Turner club found their range in the third period and built up a 9-point lead. They matched this in the final period for the 18-point win.

Kay Calvin paced all scorers with 33 points. Judy Pearson led the Corbin point makers. Ruth Parker, Turner, and Kay Horrigan, Corbin, were the outstanding defensive players.

Sigma Kappa won third place over the Independents. The consolation round was won by Brantly hall.

## Leadership Camp Fee Hike Possible

In order to meet expenses of the University Leadership camp, Bruce Crippen, Billings, ASMSU business manager, suggested raising delegates' fees. According to the budget presented to Budget and Finance committee members by Bob Gilluly, Glasgow, income from the camp would be \$1434.20 and expenses would amount to \$1,635.

Gilluly said that more persons are being invited to the camp than in previous years and approximately 110 people are expected to attend.

Audrey Wacker, Billings, and John Fowler, Missoula, presented plans for the World University Service drive April 9-14 and presented a budget of \$103.41. The majority of the committee seemed to feel that expenses for this event should be paid for out of profits made during that week. Further discussion was postponed until later.

Crippen emphasized that all organizations must have their budgets turned into him by March 7 for consideration by the committee.

### Easy Ed . . .

...Bergquist, 6-3 senior from Billings, will finish his basketball career at MSU tomorrow night. Ed has been awarded two varsity letters, and is best known for his defensive ability.

Ice Cream  
SODAS  
20¢

Thick  
SHAKES  
25¢

HANSEN'S  
519 S. Higgins

## I-M Schedule LIBERTY BOWLING

10—Jumbolaya	2—Sigma Alpha Epsilon
3—Phi Delta Theta	8—Alpha Tau Omega
6—Phi Sigma Kappa	1—Forestry
11—Cannibals	9—Sigma Chi
12—Law	5—Theta Chi
14—Bye	7—Sigma Nu
13—Sonowea	
14—Sigma Phi Epsilon	

Mar. 3 - 1 p.m.

## 'Tips Close Basketball Season With A&M Rams Tomorrow

The curtain comes down on the final act of the 1955-56 basketball season tomorrow night in the Field House when the Grizzlies play host to the Colorado A&M Rams at 8 o'clock.

Montana's two leading scorers, Eddie Argenbright and Ed Bergquist, finish out three year careers with Montana tomorrow. Both Argenbright and Bergquist have been important factors in the Grizzlies' season this year.

Argenbright is one of the leading scorers in the Skyline conference, and he may set a new Montana free-throw record. Bergquist is one of the top rebounders on the Montana team, and is an excellent defensive player.

### Hibbard Heads A&M

Colorado A&M's attack is led by Gary Hibbard. The Rams' center is currently sixth in the Skyline conference in scoring with 216 points through Feb. 25 games. He has averaged 18 points a game.

Hibbard is also the Skyline's leading rebounder. The 6-5 center has taken in 163 rebounds to pass Russ Sheriff who has garnered 149.

Jack Bryant, Rich Gregory, Stan Albert, and Boyd Grant are the other A&M starters. Albert, Bryant, and Grant have all averaged over 12 points a game in conference play.

Colorado A&M has been a hard team to beat at home this year, and the Rams hold wins over both BYU and Utah in Ft. Collins. The Aggies were also one of the two teams to defeat Wyoming in Laramie this year.

### 'Tips Lose in Colorado

The Grizzlies were beaten soundly by A&M in Ft. Collins Feb. 4. The Rams defeated Montana 96-76, in a fast-moving game. Montana kept in close contact with the Rams for the first 15 minutes, but after that it was all A&M.

All five of the Rams' starters finished in double figures in the first Grizzly-A&M clash. Hibbard with 24 points, and Grant with 22 led the Rams' attack. Gregory had 18 points, Bryant 14 and Albert 11 for A&M.

Jim Williams, A&M coach, is finishing his second year at the Ft. Collins school. Before going to A&M, Williams coached at Snow junior college, Ephraim, Utah.

Montana lost two games to Colorado A&M last year. The Rams won in Missoula 75-58, and 54-58 in Ft. Collins.

Coach Frosty Cox has indicated that he will go with his usual starting line-up of Bergquist, Argenbright, Sheriff, Rhoades, and Dunham.



Umm . . . Umm  
all I can think about are  
those wonderful burgers  
and good coffee at

**BROWNIE'S**

In 'n' Out

1550 W. Broadway

Highway 10



★ STARTING TONITE ★

at the

**ROXY THEATRE**

The Montana Film Society

— Proudly Presents —

## A DRAMATIC MASTERPIECE



"Did you spend that night  
with my husband?"

ANTHONY ASQUITH'S STUDY IN SUSPENSE  
**COURT MARTIAL**

starring DAVID NIVEN • MARGARET LEIGHTON  
A Romulus Presentation A Kingsley International Release

added  
DISNEY CARTOON  
"Spare the Rod"  
"Sky Flying"

COFFEE HOUR . . . in  
the lounge every evening  
beginning at 8:30 p.m.

"First-rate drama!  
Exciting personal  
tension and  
suspense!"  
—Bosley  
Crowther,  
N. Y. Times

★★★½★ "Fine  
adult entertainment!"  
—Wanda Hale, Daily News

"A gripping film . . .  
the actors are  
superb!" —Wm. Zisser,  
N. Y. Her. Trib.

"Superior!"  
—Jim O'Connor, Journal-Amer.

FRIDAY - SATURDAY Shows at 7:00 & 9:15 p.m.  
SUNDAY at 1:00 3:00 5:00 7:00 & 9:15 p.m.

## ★ SUNDAY at the FOX ★

The  
Sensational  
Successor  
to  
"From  
Here to  
Eternity"

WILLIAM HOLDEN  
**picnic**  
KIM NOVAK  
DITTY FIELD • SUSAN STRASSBURG • CLIFF ROBERTSON  
AND  
ROSALIND RUSSELL



CINEMA SCOPE TECHNICOLOR

## For Dancers Only

Les Elgart  
and his  
Orchestra

33-45

**MUSIC CENTER**

## Golden Pheasant Cafe

Phone 9-9953 318 N. Higgins

American and Chinese  
Dishes

A La Carte or  
Table D'Hote Dinners  
Served at Moderate Prices

Open Weekdays  
11:30 a.m.-Midnight  
Saturdays: 11:30 a.m.-3 a.m.  
STUDENTS WELCOME



## Diamond Mountain

Home of MSU Ski Club  
22 Mi Northeast  
on Mont. 20

3 Tows

Warming Cabin

Concessions

Excellent Snow



## Dances And Elections Highlight Society

This will be a busy week end on campus. Six groups have planned dances for tonight or tomorrow night. Tomorrow night, the Theta Chis will hold their 19th annual Red and White Ball at the American Legion. At the dance the first Theta Chi Dream Girl at MSU will be crowned, in honor of the 100th anniversary of the fraternity's founding.

Tonight, the Phi Delt will hold a "Song Dance Masquerade" at the chapter house. The decorations and costumes will feature a song title theme.

Tonight the Sigma Nu "Gangster Party" will be held at the American Legion. The costume will be gangster dress, and music for the dance will be furnished by the Pastels.

The DG's formal dinner dance will be tomorrow night at the Lodge. The theme is "Midnight Moods," and Cathy Robey, Spokane, Wash., is in charge of decorations. The Alpha Phis will also have their winter quarter dance tomorrow. It will be held in the Governor's room of the Florence hotel. The ATO's will sponsor a fireside tonight.

### Exchange Dinners

The Alpha Phis and SAEs had an exchange dinner Tuesday.

Theta Chis and Tri Delt had an exchange dinner Wednesday.

### New Pledge

Lawrence E. Ceranski, Wausau, Wis., is a new Sig Ep pledge.

### New Officers

Dick Behan, Indianapolis, Ind., was elected Sigma Nu president Monday night. Other officers were Bill Drum, Miles City, vice-president; Chuck Greenup, Victor, recorder; Gary Kaiser, Hardin, treasurer; and Howard Mahan, Opportunity, Wash., social chairman.

The DG's held installation of officers Monday night. The following officers were installed: Cathy Robey, Spokane, Wash., president; Dorothy Roberts, Great Falls, vice-president; Mary Ellen Brown, Billings, recording secretary; Pat Finney, Hopkins, Minn., treasurer; Lynn Spencer, Great Falls, social chairman.

New officers of the Theta house are: Donna Kaye Bailey, Red Lodge, president; Carla Clausen, Missoula, vice president; Mary K. White, Two Dot, social chairman; Carol Crippen, Billings, recording secretary; and Ruth-Ann Christensen, Reserve, and Corinne Cone, Plains, co-treasurers.

Glenn Stroehrer, Billings, was elected president of Phi Delta Theta.

Corridor chairmen of Brantly hall are: Kay Fallon, Billings; Kitty Fox, Helena; Jo Haines, Missoula; Peggy Jo Neil, Cut Bank; Sid O'Malley, Helena; and Ardi Hamilton, Havre.

Warren H. Gamas, Glasgow, was installed Monday as president of the Sig Ep house. Other new officers are: Loren F. Smith, Lewistown, vice-president; Karl Allen, Missoula, comptroller; and Richard H. Gilluly, Glasgow, secretary.

New Alpha Phi members are: Ann Ainsworth, Missoula, president; Roxie Perrier, Missoula, first vice-president; Shirley Underwood, Havre, second vice-president; Shirley Erickson, Great Falls, secretary; and Mary Mae Feely, Needles, Calif., social chairman.

Officers of Sigma Chi for spring quarter are: Gary Jystad, Columbia Falls, president; Jack Streeter, Billings, vice-president; and Bill Lawton, Anaconda, secretary.

Alpha Phi pledge officers are: Jeri Miller, Cut Bank, president; Nancy Perry, Butte, vice-president; Jeanne Prety, Missoula, secretary; Dorothy McQuire, Cut Bank, treasurer; and Gail McLain, Havre, social chairman.

### Initiations

Twelve new members were initiated into Phi Delta Theta Sunday. They are: Don Brickley and Don Reiter, Billings; Clayton Dunn, Pullman, Wash.; Jim Hutchinson, Arlington, Va.; Jim Breslin, Helena; Rick Benson, Glasgow; Tulie Barnum, San Francisco, Calif.; Tom Jenkins, Salinas, Calif.; Byron Christian, Kalispell; Bill Beaulieu, Great Falls; Jerry Christensen, Big Timber; and Jim Stoker, Chewelah, Wash.

New Alpha Phi actives are: Nancy Rood Schulke, Butte; Nan Haines, Sunburst; Patti Bolton, Kalispell; Sharon Orr, Missoula; Delsena Peterson, Eureka; Dorothy Bond, Calgary, Alta., Canada; Sally Barker, Butte; Frannie Ferran, Missoula; Carol Sue Otthouse, Valier; Arla Engelbretsen, Cut Bank; Ardi Hamilton, Havre; Betty Adams, Butte; Pat Harstad, Glendive; Kay LeFevre, Kalispell; and Peggy Jo Neil, Cut Bank.

### Pinnings

Gaye Harding, DG, '58, Dickenson, N.D., is wearing the SAE pin of Bob Engle, Billings, '57.

Ann Ainsworth, AP, '57, Missoula, is pinned to Dick Behan, SN, '57, Indianapolis, Ind.

Jean Hollingsworth, KKG, '56, Hamilton, is wearing the Sigma Nu pin of Jack Peterson, '56, Butte.

### Serenades

The SAEs serenaded Nancy Perry, AP, '58, Butte, Feb. 20. She is pinned to Ted Molthen, '58, Butte.

Marlene Ramsey, KAT, Shelby, who is pinned to Ron Farrell, Ft. Benton; and Marilyn Gunkel, KKG, Missoula, who is pinned to Wylie Johnson, Billings, were serenaded by the Sigma Nu's Monday night.

### Marriages

Roberta Lucke, DDD, Havre and Ralph Farley, SPE, Great Falls, were married Feb. 12 in Missoula.

Georgiana Coppedge, KAT, '55, Polson, and Ron Faust, SAE, '54, Forsyth, will be married tomorrow in Polson.

### House News

The Theta Chis were guests at the Kappa house Monday for a coffee hour.

Turner hall girls who had birthdays from September through February were honored at a birthday dinner, Feb. 22, in the Yellowstone room of the Lodge.

The Tri Delt held an "Apple-Polishing party" Feb. 22 for their favorite instructors. This party is a tradition also followed by other Tri Delta chapters.

The Phi Delt and Alpha Phi pledges took a successful sneak Saturday morning at the Roller rink.

The DG's annual Founder's Day banquet was held in the Governor's room of the Hotel Florence Sunday.

### Guests

Doris Sandmark, KAT, '55, Roman, was a dinner guest at the Theta house Sunday.

Sue Cooney, Billings, ex-'57, was a weekend guest at the Theta house.

Mrs. John Earll, KAT, '55, Great Falls, was a guest at the Theta house this week. She is the former Janet Bailey.

Thea Williams, KAT, Billings, was a weekend guest at the Alpha Phi house.

Dorie Wonder, Fitzhenry, Missoula, was a weekend guest at the Alpha Phi house.

Dinner guests at the Tri Delta house Sunday were Miss Catherine Duncan, Mrs. Vera Rimel, and Mrs. W. H. Thompson.

## Classified Ads . . .

FOUND near Math building, a home-made dissecting kit. Kaimin business office. **1¢**

HAYRIDES and sleighrides, Ph. 9-8247, 2-2409. **73c**

FOUND: Man's plaid scarf, 2 pair girls' gloves. Business Administration Office. **1¢**

LOST: Argus C-4 Camera and flash during beard judging contest at the field house. G. Douglas Pittman, Craig Hall. **73c**

\$50 cash to individual selling my 1950 panel truck. For \$550. Also for sale oil stove, electric water heater, kitchen cabinets. Dave Boots, 8 Dawson Street. 9-2884. **74c**

FOUND: Works to a Ladies Bulova watch. Field House Business Office. **1¢**

STUDENTS: Earn good commissions and tickets to pro baseball games. Sell advertising in your spare time. Call Missoula Baseball Club Inc., 9-2717 for appointment. **75c**

## No Investigation Planned on Bribe, Says Attorney

By UNITED PRESS

### U. S. Attorney . . .

...Krest Cyr says his office is not investigating an alleged \$20,000 bribe to Crow Indian Robert Yellowtail.

Yellowtail refused yesterday to tell the Senate Interior committee about the offer he claims was made to him to drop his opposition to the Yellowtail dam. He said he could not talk about it because the U. S. Attorney is investigating.

Says Cyr: "We have no information other than his statements that any sum was offered him. Robert Yellowtail is not an official of the federal government."

## Constitutional Changes . . .

These are the constitutional amendments to be voted on in the election next Thursday:

- (1) Delete Article V, Section 3, Part 3, which reads, "a member of the Alumni association selected by that association provided that such member will not be one of the two faculty representatives; in the event that the Alumni association fails to appoint a representative by the first meeting of Central Board in the fall, the alumni member shall be chosen by the remaining members of the board."
- (2) Replace Article V, Section 3, Part 4, with, "Eleven class representatives, to be elected as follows: (a) In the spring elections, members of the junior class will elect two delegates, each to serve a one year term. Members of the freshman and sophomore classes will elect two delegates. The delegate receiving the highest vote will serve a two year term, and the other delegate will serve a one year term. (b) In the fall elections following, members of the new freshman class will elect two delegates. The delegate receiving the highest vote will serve a two year term, and the other delegate will serve a one year term."
- (3) Change Article V, Section 5 from "Seven voting members" to "two-thirds of the voting members" of the board shall constitute a quorum.
- (4) Delete all class officer positions.

### SINFONIA ELECTS OFFICERS

Eight new officers were elected at the regular meeting of the Sinfonia, music honorary organization, Wednesday night.

Those elected were: president, Silver Chord, Aitkin, Minn.; vice-president, Robert Thorson, Anaconda; secretary, Edward Focher, Ballentine; treasurer, Clark Hanor Libby; alumni secretary, Jim Snyder, Missoula; historian, George Watson, Sturgis, S.D.; warden, Ralph Farley, Great Falls; song leader, Jim Snyder.

For a quick, refreshing lift...

Nothing does it like Seven-Up!

## Tri Delta Scholarship Forms Due March 25

Deadline for applications for the annual Tri Delta scholarship will be March 25. The scholarship is open to any MSU woman who will be attending college next year and needs financial aid.

Applications are available in the Dean of Students' office. Mrs. Paul Jewell, Missoula, is in charge of the Tri Delta scholarship which amounts to \$100 this year.

In addition to an application blank, each applicant for the scholarship must submit a personal letter and three letters of recommendation.

## LODGE GRILL

Sunday Dinner \$1.35

Roast Turkey & Dressing  
Mashed Potatoes & Gravy

Lima Beans

Orange Coconut Salad  
Pineapple Sherbet — Cookie

Choice of Beverage

Breakfast 8:30-10 a.m.

Dinner 1-2:15 p.m.

Supper 5:30-6:30 p.m.

## RENTALS!



TYPEWRITERS

Portable Standard

Electric

ADDING MACHINES  
CALCULATORS

BUSINESS MACHINES CO.

225 E. Broadway

Phone 9-8995



RELAX in  
San Juan  
SLACKS  
Tailor-d by  
Day's

Dragstedt's  
EVERYTHING MEN WEAR  
ON CIRCLE SQUARE

Come — See  
New Styles  
of  
JONATHAN LOGAN'S  
now being shown

Distinctively Different  
Cotton Poplin  
Shag-Bark  
Dripdry Fabrics  
IT NEEDS NO IRONING!

Priced from  
\$14.95

Use Your Credit

at

Cummins

### FRIDAY - SATURDAY

"EXCELLENT!" — Post  
RALPH RICHARDSON, CELIA JOHNSON  
MARGARET LEIGHTON, DENHOLM ELLIOTT  
The Holly and the Ivy

— and —

THE Bamboo Prison  
Robert FRANCIS  
Dianne FOSTER • Brian KEITH

### SUNDAY - TUESDAY

KILLERS  
FROM SPACE  
Peter Graves • Barbara Bostar

— and —

WORST OF  
OUTLAW  
BANDS!  
A COLUMBIA PICTURE  
Technicolor  
WYOMING  
RENEGADES  
PHIL CAREY • GENE EVANS • MARTHA HYER

Campus Theatre

ADULTS 50c

KAIMIN CLASS ADS PAY!

## Beat 'em Grizzlies!

DID-YOU-KNOW?

by

The 93 Stop & Go

Some girls only wear pretty dresses to teas.

The only time people dislike gossip is when it's about them!

Don't forget those delicious beefburgers



ANY TIME IS Courtship TIME

COURTSHIP

DIAMOND RINGS, WEDDING RINGS

Courtship and a lifetime of happiness. The two are as one, for the incomparable beauty, quality and value of Courtship Diamond Rings endure forever.

Your Courtship jeweler has an exciting selection, each ring a masterpiece, each registered and insured — all modestly priced.

For nearest COURTSHIP jeweler and brochure, write COURTSHIP, P. O. Box 1914, Seattle 11, Washington