

University of Montana

## ScholarWorks at University of Montana

---

Montana Kaimin, 1898-present

Associated Students of the University of  
Montana (ASUM)

---

10-4-1956

### The Montana Kaimin, October 4, 1956

Associated Students of Montana State University

Follow this and additional works at: <https://scholarworks.umt.edu/studentnewspaper>

**Let us know how access to this document benefits you.**

---

#### Recommended Citation

Associated Students of Montana State University, "The Montana Kaimin, October 4, 1956" (1956).

*Montana Kaimin, 1898-present*. 3238.

<https://scholarworks.umt.edu/studentnewspaper/3238>

This Newspaper is brought to you for free and open access by the Associated Students of the University of Montana (ASUM) at ScholarWorks at University of Montana. It has been accepted for inclusion in Montana Kaimin, 1898-present by an authorized administrator of ScholarWorks at University of Montana. For more information, please contact [scholarworks@mso.umt.edu](mailto:scholarworks@mso.umt.edu).



# THE MONTANA KAIMIN

Montana State University, Missoula, Montana

Volume LVIII

Z400

Thursday, October 4, 1956

Number 1

SOS  
at 7:30  
Tonight

## Maurice Problem Goes to Court Friday

### McFarland Outlines U Future In Anaconda Talk Yesterday

Growth of Montana State University during the next five years was outlined by Pres. Carl McFarland in Anaconda Wednesday night. He was invited to speak at a Rotary meeting with Kiwanians, their wives, MSU alumni and guests.

"The coming years will be dominated by the rising tide of students," the president said. "The problems thereby forced upon everyone concerned will be country-wide."

McFarland felt the problems would center in the need for and procurement of operating funds, staff and buildings.

"There can be no stretching of meager funds to accommodate all who desire admission, because there simply will not be enough classrooms or laboratories or teachers . . . unless funds are made available," he asserted.

He pointed out student fees and costs are at or below nation-wide levels, despite the recent increase.

"There are many people who think that state institutions provide free education. But such colleges and universities never have, and they do not do so now," he added. "Roughly speaking, the State of Montana provides about half the minimum cost of college education at Montana State University for resident students."

Commenting on the State Legislature and financial appropriations to MSU, McFarland said:

"In a broad sense the issue is whether Montana, through its Legislature, will be honest with itself and with its young men and women to whom it assumes to offer higher education."

### Yellow Bay Case In Court Saturday

Dist. Judge W. W. Lessley has ordered Mrs. Juanita B. Elliott, Kalispell, to appear in court Oct. 6 at Helena to explain why a temporary restraining order preventing Montana State University from closing Yellow Bay State Park should not be vacated, Dean Robert E. Sullivan of the university law school has announced.

Mrs. Elliott filed a suit earlier in the year claiming MSU was planning to close the park to expand its biological station, which is adjacent to the park.

The University filed a demurrer, following Mrs. Elliott's action, claiming there was no cause for her complaint.

A hearing was held in Helena Sept. 18 and the University requested that the restraining order be lifted. Mrs. Elliott and her counsel failed to appear at this hearing.

Yellow Bay State Park is a 15 acre tract of land located at the tip of the University biological station on Flathead Lake.

The park was set up by an act of the 1941 State Legislature. The act stated the park was to be, "... established and maintained as to develop and encourage public interest in the scientific and biological resources of the area." It also specified nothing in the act, "... shall operate to prevent the use of the area within the said park for biological station purposes whenever it becomes useful or necessary for such purposes."

The biological station was established on 160 acres of land granted to the University by Congress in 1905. Fifteen acres of this land, which now constitutes Yellow Bay State Park, is the area in dispute.

The president also commented on the physical plant here.

"With some serious exceptions, the plant at Montana is in fair shape for present student numbers. If enrollment can be held in line, the deficiencies can no doubt be made up . . . in five years."

Quality of MSU's faculty was also emphasized. The president pointed out that students here received instruction from better trained and experienced teachers than at many better known institutions. Here again, this high level can be maintained only through a controlled enrollment and necessary operating funds.

"The next five years, beginning in 1957, will tell and will leave indelible consequences on the future history of Montana State University," the president surmised.

### Rushing Rules Set By IFC

A special meeting of the Interfraternity Council was called Tuesday to discuss plans for ways of informing new students during Fall quarter the part fraternities play in academic life.

The aim of the tentative plans is to reach all newcomers instead of only those interested in fraternities. This will be accomplished by a series of group talks in the three men's residence halls, where by experienced members of each fraternity will speak on fraternity life and procedure and will answer any questions concerning the fraternities. There will also be open house in all fraternities with guided tours during the quarter.

Also discussed at the meeting was the question of whether or not a quota system should be adopted whereby all fraternities would be limited to a set number of members. Ken Shquist, SAE, Fairfield, Interfraternity Council president, stated that "rushing has made the small houses smaller and the big houses bigger and tends to eliminate selectivity." This point was generally agreed upon by

(Continued on page 7)

### Calling U . . .

Student Christian Association reorganizational meeting at 7:30 tonight in the Bitterroot Room of the Arts and Crafts Building. "Don't Worry About Your Reputation" will be discussed by Tom Haney, Sheila McDorney, Shirley Lucier, Charles Wilson and John Fowler.

A pharmacy convocation will be held today at 5 p.m. in Room 109 in the Pharmacy Building for pre-pharmacy and pharmacy students.

All previous and prospective members of the University Saddle Club are asked to contact Mrs. Lynn Wolfe at the University Stable office, Bob Anderson at Craig, or Kay Cronk at Brantly Hall as soon as possible. Preparations are under way for the Horse Show during Homecoming weekend, and an active membership is needed at once.

### MISSOULA CIVIC ORCHESTRA HOLDS REHEARSAL TONIGHT

The Missoula Civic Symphony Orchestra will have its first rehearsal tonight from 7:30 to 9:30 in the band room of the School of Music. The rehearsal will be open to all students and staff members who play instruments.

### Missoula Matron Plaintiff 'Always Interested' in U

By SHARON VENABLE

Reminiscing her early days in Missoula, Mrs. Edna Virginia Bulen, one of the foremost opponents of the proposed plan to vacate Maurice avenue, remembers the days of the University when Main Hall stood alone on the campus which now boasts the appearance of a small city.

Representing three generations of affiliation with Montana State University, Mrs. Bulen stated that she and her family were "always interested in the University" and felt that the state institution was "an asset to the community" of Missoula.

Friday morning Mrs. Bulen will appear before Judge C. E. Comer in District Court as the defendant in an order to show cause why Maurice should not be closed.

#### Missoula Resident 53 Years

A resident of Missoula for 53 years, Mrs. Bulen is the wife of Attorney Leon L. Bulen, who will present her case.

A frequent visitor to the Garden City during her pre-school days, Mrs. Bulen became a permanent resident of the city when she was nine years old. Mrs. Bulen, now residing at 811 Hastings, recalls attending some of the earliest track meets at the University when she was only a child.

As a member of the State Legislature, Mrs. Bulen's father was in office when the University received its land appropriation from the state.

The sprightly defendant's sister and brother, Winifred L. Woods and Vincent K. Woods, who had attended the first state university, continued their studies in Missoula when the new University was opened.

Another member of the family, Newton P. Woods, Mrs. Bulen's eldest brother, sang at the dedication services at the laying of the cornerstone shortly before the turn of the century.

In 1951 her daughter, Virginia, graduated from the University in home economics and art, while a nephew, Dale Benson, graduated in 1952 as a pre-med student.

Mrs. Bulen attended Montana State University until her marriage to Attorney Bulen.

### Homecoming Program In Full Swing; Coronation Ceremony Added Feature

MSU's 1956 Homecoming program is in full swing this week with living groups working on their floats and queen candidate campaigns rolling, said Donna Kaye Bailey, Homecoming committee chairman.

A new feature of this year's Homecoming, set for Oct. 13, is the coronation ceremonies for the Homecoming Queen which will be held Friday evening, Oct. 12 at 7:30 p.m. on the steps of Main Hall in conjunction with an SOS. Two runners-up will be designated as Princesses to the Queen. Election will be on Thursday and Friday of next week.

Preceding the coronation ceremonies, there will be a pep rally, 7 p.m. at Main Hall. The coaches, team captains, and the president of the Knights of the Sports Round Table will speak.

Because Homecoming floats must be completed by 6 p.m. Oct. 12, Pres. Carl McFarland has given permission for Friday afternoon classes to be excused on the condition that morning classes will not be cut. Living groups must work on their floats at this time, stressed Miss Bailey.

### Local Woman Will Attempt To Show Why Maurice Ave. Should Not Be Barricaded

By JOHN BANSCH

The long awaited answer to the Maurice avenue problem may begin to come into view in District Court at 9:30 tomorrow morning when Mrs. Edna Virginia Bulen appears before Judge C. E. Comer. Mrs. Bulen will appear in court in order to show cause why the petition filed by the defendants (the city of

Missoula and Montana State University) should not be granted. The defendants filed a petition requesting authority to close Maurice between Keith and Connell avenues.

The petition filed by Mrs. Bulen, 811 Hastings, to keep Maurice open alleges the street "provides a safe, convenient, direct and satisfactory route for her and her family to travel from the University Addition to the Van Buren Street Bridge."

She also claims, "that there is no other route or means of getting to the north side of the Clark Fork

River from University Addition and her home."

Denying this the defendants say Maurice is not the most available through street east of Higgins avenue. They state both Arthur avenue and the campus through road (the road behind Main Hall) are more available, used more for traffic, and are more convenient.

#### Petition to Barricade

On October 2, the defendants filed a petition to barricade Maurice between Keith and Connell until a final decision is made. The petition said, "Maurice has been and now is, in a state of disrepair with large and deep holes, and that the condition of said street generally is such as to be one, if used, can, and has caused damage to vehicles operated over same, with attendant risk of automobile accidents and injury to persons and property."

Included in the defendant's position is the argument that to repair Maurice at this time would entail the expenditure of a large amount of money by the defendants. The defendants contend this would be, "for naught" if it was later determined to close Maurice.

It was also stressed in the defendant's petition that during Homecoming (Oct. 11-14) many additional people will be on campus.

(Continued on page 20)

### Pom-Pom Girls, Cheerleaders Chosen for 56-57

Football fans will be seeing new cheerleaders and pom-pom girls at the Homecoming game. Of 30 students who tried out for cheerleading, Traditions Board selected five freshmen: Jerri Whitten, Lewistown; Sharon Nelson and Jan Tustason, Billings; Judy Riddle, Libby; Jerri Nelson, Wolf Point.

Former cheerleaders on this year's squad are Cara Boggess, Libby; Polly Hodges and Ardis Sayer, Great Falls; Dick Riddle, Libby, "yell king."

Pom-pom girls chosen are: Greta Peterson, chairman, Billings; Jo Haines, Frannie Ferland, Shirley Trana and Freda Stegmuller, Missoula; Ardi Hamilton, Havre; Lee Ryan, Wilmetter, Ill.; Marilyn Dickson, Chinook; Sue Marx, La-Canada, Calif; Ruth Wenzel, Forsyth.

"Competition was very rough," said Dick Riddle, yell king, "and if circumstances call for replacements, we have in those that weren't chosen very capable people to fill the vacancies."

Riddle said this year the pom-pom girls will present a new routine for the Homecoming game.

### First Practice Session Held for Football Cubs

The Cub football squad, numbering about 40, went through their first practice session of the year last night under the guidance of new frosh coach Hal Sherbeck.

Sherbeck, former coach of Missoula high school, has most of last year's senior championship Spartans on the squad.

### Liquor Board Closes Tavern

Doors of the Blackfoot Tavern as operated by Mr. and Mrs. William C. Jones of Missoula, were permanently closed last week by order of the Montana Liquor Control Board.

Revocation of the liquor license followed a unanimous vote of the board and was based on a conviction in Missoula justice court of selling liquor to a minor. The owners have 15 days in which to appeal.

The complaint resulting in the action against the Blackfoot was filed last spring by Dave Burton, chairman of Judicial Council. The original complaint had charged a Blackfoot bartender with serving a minor last April 28, the night Terry Matteucci, a freshman from Great Falls, was killed in an auto accident. Three other students were seriously injured and an elderly man, lone occupant of the other car involved, was recently released from a local hospital, a cripple for life.

(Continued on page 6)

### Homecoming Program In Full Swing; Coronation Ceremony Added Feature

Saturday, Oct. 13, student events for the weekend are: parade, 9:30 a.m.; kick-off time for Utah State-Grizzly game, 1:30 p.m.; open house at all living groups, after the game; mixer at the Lodge, 9 p.m. to 12.

On the morning of Oct. 13, parents of students will have breakfast with their sons and daughters at the Lodge.

Over-all theme for this year's Homecoming parade is "MSU Goes Modern." Partners for floats are: Kappa Kappa Gamma and Phi Sigma Kappa; Brantly Hall and Sigma Alpha Epsilon; Sigma Kappa and Alpha Tau Omega; Synadelphic and Sigma Chi; Delta Gamma and Elrod, Jumbo Halls; Alpha Phi and Theta Chi; Turner Hall and Sigma Phi Epsilon; Kappa Alpha Theta and Phi Delta Theta; Delta Delta Delta and Omega Epsilon, Craig Hall; Corbin

(Continued on page 7)

#### KAMS AND DREGS TO MEET

Kams and Dregs are to meet at 5 o'clock on the oval in uniform Friday afternoon, according to Shirley Underwood. An important meeting will be held, Miss Underwood said.



## The Montana KAIMIN

Established 1898

Published every Tuesday, Wednesday, Thursday, and Friday of the college year by the Associated Students of Montana State University. Represented for national advertising by National Advertising Service, New York, Chicago, Boston, Los Angeles, San Francisco. Entered as Second-class matter at Missoula, Montana, under Act of Congress, March 3, 1879. Subscription rate \$3.00 per year.

**Member**  
Montana State Press Association  
Member, Rocky Mountain  
Intercollegiate Press Association

Editor, John Bansch; Business Manager, Lee DeVore; Associate Editors, Genell Jackson, Jim Berry, Gary Sorenson, Jayne Walsh; Circulation Manager, Bill Bradford; Adviser, Prof. E. B. Dugan.

Printed by the University Press

## Maurice . . .

(Continued from page one)

pus, adding to the risk and danger on Maurice and that it should be closed to "safeguard the traveling public."

### Improvement District

City officials estimate it would cost approximately \$700 per block to repair Maurice between Keith and Connell. This would necessitate a Special Improvement District as the city can spend only about \$25 per block for repairs. It is apparent the University does not want to pay the \$700 per block required for improvements, according to city officials.

Mrs. Bulen says, "Maurice was dedicated to the use of the public forever," but the defendants claim otherwise. They say it is true the portion of Maurice west of the center line belongs to the city, but the area east of the center line is merely a portion of the campus road system.

### Access to Property

Through her attorney Mrs. Bulen said, "Maurice avenue provides among other things, a convenient and promptly available access to the property of the State of Montana and the State University for the Fire Department for fire protection for the State Property, for ambulance service in event of emergency of sickness or accident from injuries on the athletic fields or in scientific labs, and for the transaction of business at the State University offices."

She also states, "Maurice avenue is used extensively for the parking of automobiles by persons attending public shows, lectures, and musicals, etc. at the University as well as by students and tourists who visit the institution."

## Montana Forum Meets Tomorrow

Montana Forum, weekly discussion group composed of students and faculty members, will hold its first fall meeting tomorrow noon in the Yellowstone Room of the Lodge. Norma Beatty, Helena, chairman, has asked all old and new members to attend this meeting to formulate this year's plans.

Members are: seniors, Joan Hoff, Bruce Cook, Don Mosher, Butte; Bob Gilluly, Glasgow; Jim Beadle, Red Lodge; Sheila McDorney, John Fowler, George Lambros, Marilyn Shope, Roxie Perrior, Missoula; John Bansch, Charles Wilson, Helena; Dorothy Roberts, Great Falls; and Pris Herget, Peoria, Ill.

Juniors, Marcia Smith, Stan Nicholson, Audra Browman, Missoula; JoAnne Jacobson, Butte; Dick Riddle, Libby; Bill Williamson, Box Elder; and Ellen Strommen, Anaconda. Sophomores, Audrey Wacker, Billings; Larry Pettit, Lewistown; and Bill Crawford, Missoula.

Faculty, Prof. Ludvig G. Browman, Prof. Edward B. Dugan, Asst. Prof. Deane W. Ferm, Prof. C. Rulon Jeppesen, Assoc. Prof. Ralph Y. McGinnis, Dean Robert T. Turner, Assoc. Prof. Ellis L. Waldron, Prof. Edmund L. Freeman, Asst. Prof. Thais S. Lindstrom, Assoc. Prof. Frederick T. Yu, Asst. Prof. Seymour Betsy and Inst. John W. Smurr.

## Business is Booming



### AWS SOB-SUNDAY TEA TO BE IN TURNER HALL

The Sob-Sunday Tea will be held this Sunday for all big and little sisters and new students. Mortar Board and AWS are sponsoring the tea with the help of the Spurs to allow the lonesome students to get acquainted with each other. The tea will be held in Turner Hall lounge from 3 to 5 p.m. Ellen Haugen, Chinook, is chairman, and Sheila McDorney, Missoula, is in charge of the entertainment.

### MEN'S JUBILEER TRYOUTS WILL BE FRIDAY AFTERNOON

Jubilee tryouts for women were held yesterday afternoon in the Music School building. Men's tryouts will be tomorrow at 4 p.m.

## Christian, Riddle To Head Growlers

Cal Christian, Kalispell, and Judy Riddle, Libby, were elected president and secretary-treasurer respectively for Grizzly Growlers, freshman pep organization, during the Freshman Jamboree.

A partial list of projects to be undertaken has been started, said Dick Riddle, supervisor of the group. He said the "attitude" in the Grizzly Growlers is "much better this year."

This year, the Grizzly Growlers have charge of the University's newly acquired mascot, a cub bear, loaned from the Montana Fish and Game Commission. The freshman group will be contributing to many of the Homecoming activities.

Editorially . . .

## The Shame of MSU

MSU is going modern for homecoming. That is, except for Maurice avenue. Even if the campus didn't go modern for the annual classic, the surrey with the fringe on top couldn't make it down the street.

The condition of Maurice is utterly deplorable, pitiful, sad, or what have you. The answer to the problem is not blocking it off with barricades, but fixing it permanently.

What good will it do to barricade the street for homecoming except make it more of an eye-sore than it is? If alumni were permitted to use it during their reunion some action by them might result.

Presently it appears the plan is to leave the street as is until a permanent vacation (closing of the street) can be obtained. Then the street will be grassed in. This is not the answer either.

The city will do nothing, not even patch repairing, even though there has been an offer to donate the labor. Sigma Chi, through its president, has volunteered its services to do the repair work if the city would furnish the equipment. This would at least be beneficial for homecoming and if done properly would last through the winter.

Maurice is needed, not so much by the townspeople, as the plaintiff in the case to keep it open would have everyone believe, but as she later points out for the use of fire trucks, ambulances, and parking for tourists and students. Without Maurice there would be an increase in our already cumbersome traffic situation. With it open and in fine condition, part of the bottleneck could be eliminated.—JGB.

## Tough Punishment Can Be Expected Says J-Council

New policies were discussed by Judicial Council, Pres. Carl McFarland and Andrew Cogswell, dean of students, at an initial meeting last week. The group agreed that actions taken in student cases last spring in many cases were too lenient. The council at that time was in the experimental stage, but is now ready for action.

"Of course, this is not arbitrary," Dave Burton, Billings, chairman of the council, said. "Any action taken will depend upon the particulars of the case."

Burton also wished to clarify possible misinterpretations of his talk with incoming freshmen during orientation week.

"Some may have the impression that it is all right to drink, so long as they didn't get caught," Burton said. "This certainly was not my point. Instead, I want it emphasized that those over 21 may drink, but must accept the responsibility that goes with the privilege."

"The three main rules regulating drinking are (1) no student is permitted to drink alcoholic beverages at any University function; (2) no student under 21 can drink liquor at any time; and (3) no student over 21 can buy drinks for or drink in the presence of a minor."

PARFUMS **WORTH** PARIS  
"THE FINEST FROM FRANCE"

in the original Lalique presentations . . .  
made, packaged and sealed in France.  
PERFUME: \$18, \$10 and \$5\*  
EAU DE COLOGNE: \$10 to \$3.50\*

**MISSOULA DRUG CO.**

\*plus Fed. Tax

"I feel like a Coke. Do you?"

Of course. Most everyone does—often. Because a few moments over ice-cold Coca-Cola refresh you so.

It's sparkling with natural goodness, pure and wholesome—and naturally friendly to your figure.

Feel like having a Coke?

BOTTLED UNDER AUTHORITY OF THE COCA-COLA COMPANY BY  
**COCA-COLA BOTTLING COMPANY OF MISSOULA**  
"Coke" is a registered trade-mark. © 1955, THE COCA-COLA COMPANY



## Kotschevar Talks At Food Meeting

"As women have been moving out of homemaking activities, men have been moving into them," Dr. L. H. Kotschevar, chairman of the home economics department and director of food services, said in a

speech at the Food Editor's Conference held in New York, September 24.

Dr. Kotschevar was invited to speak at the New York luncheon, theme of which was "The Man in the Home." The luncheon, sponsored by Borden's, was attended by 160 food editors from newspapers and magazines around the nation.

In his talk, "Man's Changing Role in the Home," Dr. Kotschevar said, "Today we are aware that men are a very significant, if not dominant influence in our homes . . . making a home is not merely a matter of female functions but is a complex activity in which more than competency in homemaking tasks are required."

In the August issue of "Institutions", a magazine for managers of large food services and residences, an article appeared on the introduction of pizza into the menu of the MSU cafeteria. The September issue of "Women's Home Companion", featured an article on Dr. Kotschevar in its "America's Interesting People" section.

In conjunction with a series of articles by Dr. Kotschevar to appear in "Institutions", the October edition carries an article on means to increase kitchen efficiency.

October 10, Dr. Kotschevar will travel to Portland to give a 45-minute address to the Pacific Coast Regional Restaurant Convention and Exposition.

# The Santmans

Or why you never got so much for your money

"Whenever a customer complains to me about the price of gasoline, I call my wife.

"She's worked right with me and kept our books since we leased our first Union Oil station on this same corner in La Canada, 20 years ago.

"And—as Myrtle says—gasoline hasn't gone up nearly as much as other things you buy.



You pay 205% more to build a house today than you did in 1936. 220% more for a low-price 2-door sedan. 125% more for a suit of clothes. 325% more for a pound of sirloin steak.

"Yet if you leave out the tax, Union's premium gasoline has gone up only 70% in that same time. Fact is, the tax has gone up more than the gasoline—100%! And two gallons of Union's new Royal 76 will do the work of three gallons of our old product.

"You get a lot of service for nothing, too. We wash your car's windshield. We check water,



THE SANTMANS: 20 YEARS ON THE SAME CORNER IN LA CANADA, CALIFORNIA

oil, battery and tires. We provide clean rest rooms and free maps for your convenience.

"Fact is, you never got so much for your money as you do today when you say, 'Fill her up!'"

In 1956 it costs Union Oil 250% more than it did in 1936 to build the kind of service station Charles and Myrtle Santman operate in La Canada, California.

Yet in spite of continually rising costs like this we have been able to keep prices down, while constantly expanding our service and improving our product.

We have accomplished this by plowing profits back into better facilities, by research, by eliminating waste and improving efficiency.

We have had to do this to meet the competition of the many other oil companies serving your needs.

\* \* \* \*

YOUR COMMENTS ARE INVITED. Write: The Chairman of the Board, Union Oil Company, Union Oil Building, 617 West 7th Street, Los Angeles 17, California



# Union Oil Company OF CALIFORNIA

MANUFACTURERS OF ROYAL TRITON, THE AMAZING PURPLE MOTOR OIL



# Grizzlies - Denver Friday Night

The Montana Grizzly football team, 33 strong, left via air this morning for their Friday night encounter with the Denver University Pioneers. Both clubs are in search of victory number one of the current campaign; Denver has lost three games thus far, while the Grizzlies have dropped two frays.

Coach Jerry Williams has been stressing defense, particularly pass

defense the past week. Emphasis was placed on preparing a defense for Denver's split-T attack.

"Our line defense was good against Arizona, but slackened somewhat in the 26-6 loss to Utah last Saturday. We viewed the Denver-Wyoming televised game at Salt Lake and I feel the two teams will be well matched this weekend if we play the ball we are capable of," Williams said.

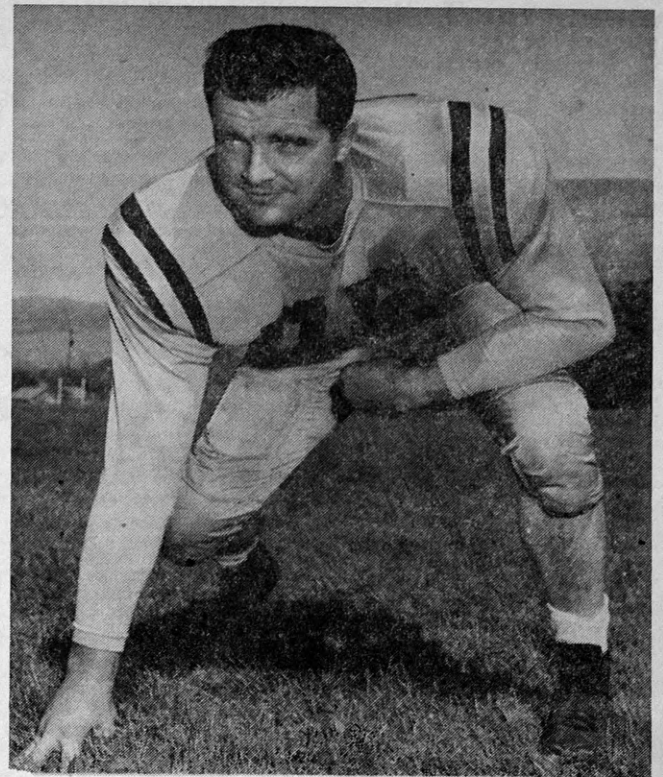
Injuries still trouble the Grizzlies as halfback Don Williamson suffered a bruised knee in the Utah game and is a doubtful starter against Denver. Co-captain Bill Kaiserman, Dick Wright and Sam Jankovich will not make the trip. Kaiserman dislocated a shoulder in the Arizona game, Wright is out with an appendectomy, and Jankovich is suffering from a recurring leg injury. Montana Bockman, a sophomore guard, is also on the doubtful starter list with a hip pointer.

## Lineup

Williams plans to platoon his ball club using two teams with each group running about six minutes at a time. The probable starting lineup for Montana will be Terry Hurley at right end; Wally Mading at left end; Karl Benjamin at left tackle; either Bill Hand or Bob McGihon at right tackle; Stan Renning at left guard; Bob Small at right guard; and Charley Moore at center.

The backfield will have Roy Bray at quarterback; Don Williamson at left half; Pat Monno at right half; and Severn Hayes or Bob Everson at fullback depending on whether the Grizzlies kick off or receive.

The second platoon will find Pete Rhinehart at left end; Lou Pangle at right end; Ivory Jones at left tackle; McGihon or Hand at right tackle; Vern Tennant or



GRIZZLY CO-CAPTAIN BOB MCGIHON

Duane Carver at left guard; John Dixon or Bockman at right guard; and Dick Dzivi or Mike O'Brien at center. The second platoon

backfield lists Paul Enochson at quarterback; Matt Gorsich at left half; Jerry Connors at right half; and Erv Rosera at fullback.

## Shower Clogs



Web Instep

Elastic Backstrap

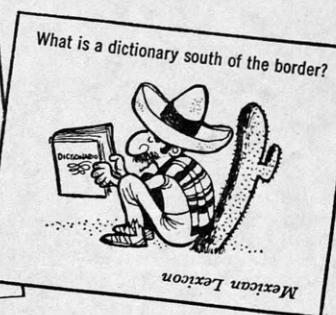
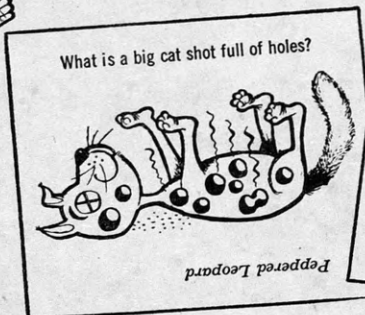
Men's and Women's—S-M-L

\$1.49

**PENNEY'S**  
ALWAYS FIRST QUALITY



## HAPPY-JOE-LUCKY presents STICKLERS!



STUCK FOR MONEY? DO A

# Stickler!

**STICKLERS ARE TICKLERS** and a mighty soft way to make money! Just write down a simple riddle and a two-word rhyming answer. For example: What's a ball player who gets a raise? (Answer: richer pitcher.) Note: both words must have the same number of syllables—bleak freak, jolly dolly, vinery finery. Send your Sticklers, with your name, address, college, and class, to Happy-Joe-Lucky, Box 67A, Mt. Vernon, N. Y. Don't do drawings! We'll pay \$25 for every Stickler we use in our advertising—and for hundreds that never see print. And remember—you're bound to Stickle better when you're enjoying a Lucky, because Luckies *taste* better. Luckies' mild, good-tasting tobacco is **TOASTED** to taste even better. Fact is, you'll say Luckies are the best-tasting cigarette you ever smoked!

SEND IT IN AND

# MAKE

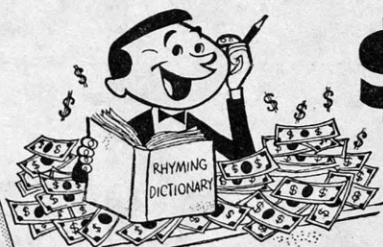
# \$25

## Luckies Taste Better

CLEANER, FRESHER, SMOOTHER!



"IT'S  
TOASTED"  
to taste  
better!



## Stats Show Yanks Shadow Brooklyn In Series Story

The New York Yankees and Brooklyn Dodgers are meeting for the seventh time in World Series competition and the Yanks hold a 5-1 edge over the Bums.

The Yanks hold the record for the most Series won, 16, while losing 5 for a .763 percentage. New York also holds the record for the total games won in Series competition, 74, while losing 39 for a percentage of .654. They likewise hold the record of World Series won in succession, five from 1949-53.

On the other hand, the Dodgers have one of the poorest World Series records, winning one series and losing seven for a measly .125 percentage. Brooklyn has won 17 Series games and lost 32 for a percentage of .347.

An old Yankee mainstay, Phil Rizzuto, released by the Yanks this summer, has appeared in the most Series games, 52, and has a Series batting average of .246.

### Green Stuff

The Yanks and Dodgers are not merely battling for prestige. The money angle is a big incentive for winning the Series since the ball-players on the winning team collect about \$4,000 more each than the members on the losing team. Last year each player for Brooklyn collected \$9,168.21 while each Yankee player picked up \$5,598.58. These figures will be about the same this year.

Whitey Ford, loser of yesterday's battle, won two series games in 1955. Only other Yankee pitcher to win a Series game last year was Tom Byrne. For the Dodgers, Johnny Podres, now in the Navy, won two while reliever Clem Labine and young Roger Craig picked up the other victories. Chief Bender holds the record for most games won in a Series, 6. He lost 4.

### Stadiums

Ebbets Field seats only 32,111 while Yankee Stadium holds 67,000. The right field line in Brooklyn's balliwick is only 297 feet. However, there is a 38 foot wall which must be cleared for a homer. In right center the distance is 403 feet while in center-field it is 393 feet with a 10 foot wall. It is 348 feet to left field with a 10 foot fence.

In Yankee Stadium, the right field wall is 296 feet with a four foot fence, and 407 feet with a 15 foot fence in right center. It is 461 feet to center field which has a 20 foot fence, and 466 feet and a 14 foot wall in left center. The left field line is only 301 feet and a four foot wall.



## Remodeled Intramural Program Faces This Year's Non-Varsity Participants

By JIM BERRY

A revamped program faces intramural athletes who will participate in sports ranging from touch football to ping pong throughout the year at MSU.

Heading the changes is the abolition of the points system, which had formerly been used by the intramural board. In addition, no all-season trophy will be awarded to the winning team for total points.

"All we were doing was duplicating the trophy that Interfraternity was giving the winning team," intramural director Ed Chinske said Tuesday.

Trophies will be given, however, by the intramural board to the winning teams in such sports as football and basketball, but total points will not be tabulated.

Chinske said the point system was voted out last spring by the intramural board composed of Bob McGihon, Richard Bork, Lee Bummer, John Ferro, and Jim Abbott.

### Golf

Golf tentatively has been eliminated as intramural team play, Chinske said. A golf tournament is planned this fall, tentatively for October 14 in Polson. Chinske said the matches will be 18 holes, medal play, with the winner being

awarded a belt buckle. The I-M director did not exclude the possibility, however, of a team tournament in the spring. This would be more practical, he added, when the University has its own golf course, which probably will not be constructed for another year.

Chinske classed tennis, ping pong, and horseshoes in the same category as golf, saying these four are more "individual" sports. No team trophy will be given in these three either.

One reason given by Chinske for moving the tennis and golf tournaments up to the fall season, instead of spring, was because most players in these sports have been playing during the summer and should be in their peak during the fall.

Another change forbids fraternity men who live in University dormitories from playing on their Greek team. Apartment dwellers and others who live off campus are not affected by this however.

### Craig Hall League

A proposed Craig Hall I-M league is being studied by students in that dormitory and Chinske expects more information later this week. The plans call for teams to be composed of men from each wing. He said as a result of a setup such as this, competition within the dorm should be very keen.

With a total of 12 wings in Craig, the dorm could conceivably sport as many squads, but the director said he would be satisfied if four or six teams could be drawn from that living group.

Chinske urged all intramural directors to turn in their football rosters to him by Friday; he also asked for tennis rosters, to be turned in the same day. Play in both those sports begins Monday.

The rest of the schedule reads: golf, rosters due Oct. 10, play begins Oct. 14; bowling, rosters due Oct. 10, play begins Oct. 14; volleyball, rosters due Nov. 21, play begins Nov. 26; ping pong,

## Draft May Get Ivory Jones

Hopes for a stalwart line this autumn were jarred early this

week when Ivory Jones, standout senior tackle, received his armed services induction papers telling him to report Oct. 12.

The Denver-Montana game Friday night will be the last collegiate game for Jones unless the big tackle receives a deferment.

The California junior college transfer will receive a deferment only if he can prove to his draft board that he will graduate in June.

from Lee Nye Photography

*Especially . . .*

Delta Gamma

Kappa Alpha Theta

Alpha Phi

Sigma Nu

*Thank You for Your Patronage  
and Welcome Back!*

*Lee Nye* PHOTOGRAPHY

Telephone 2-2845

1431 So. Higgins

MISSOULA



GRIZZLY CO-CAPTAIN BILL KAISERMAN



Angelo Bourlakas  
Daniel Lambros  
George Lambros



Our store policy will be to sell quality merchandise at prices comparable with those of other high grade Missoula stores. In addition, we will sincerely strive to maintain efficient courteous service that will make your shopping easy and enjoyable.

We want you to feel that Angelo's is your store, and we are eager to extend to you every modern shopping convenience.



## Danforth Grad Is Assigned to MSU Campus

Arlene Barnard, graduate of Occidental College, Los Angeles, is the first Danforth graduate to be assigned to the MSU campus.

Miss Barnard, who is one of 18 Danforth graduates in the United States, is sponsored by the Danforth Foundation in St. Louis, Mo. The late William H. Danforth, president of Ralston Purina Company, founded seven different programs under the heading of the Danforth Foundation. These programs are geared toward "helping young people attain a higher education in cultural fields," said Miss Barnard.

Danforth graduates are young women, chosen during their senior year in college, who spend ten months participating in selected activities of Christian service on college and university campuses.

In the past summer, a five week training period is conducted at Camp Miniwanca near Shelby, Mich., to prepare the young women for their Danforth graduate work. Early in January the graduates meet in St. Louis, Mo. for a reporting and planning session for the next school term.

Miss Barnard said a "Danny grad" is continually "searching for ideas in religion."

She will work with some of the religious activities on campus. As a graduate, her job is to work as adviser and "make suggestions" to the groups. During the one year as a Danforth graduate, she will "informally get acquainted with students and share ideas."

Danforth graduates, who are serving an apprenticeship in Christian service, are allowed to carry four credits a quarter. This quarter, Miss Barnard is taking A Cappella choir.

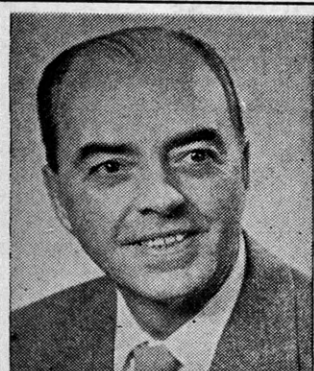
"Every Wednesday afternoon, a free coffee hour from 3:30 to 4:30 will be given for anyone who would like to come in and talk with other students and myself," Miss Barnard said. The coffee hours will be in Miss Barnard's office at the Arts and Crafts Building.

### BRIDGE LESSONS OFFERED

There's no excuse now for not being able to play the game of bridge. All interested students on campus will be given free instruction in the game beginning Thursday at 8:30 p.m. in the activities room of the Lodge, according to Tommie Lu Middleton, program director. Mrs. Ruth Veitch will be in charge of the lessons.

### AQUAMAIDS MEET TUESDAY

The first Aquamaid meeting is scheduled for next Tuesday at 7:30 p.m. in the Men's Gym. President Joan Rae McFarland, Missoula, requests that all members be present to discuss the coming tryouts.



**HAVE YOU SEEN THIS MAN? YOU SHOULD! HE'S**

**J. Lyle Denniston**  
WHO REPRESENTS THE  
NEW YORK LIFE  
INSURANCE COMPANY

He has a modern, practical and easy-to-own life insurance plan for MONTANA STATE UNIVERSITY STUDENTS

For further information call

**J. Lyle Denniston**

309 Kensington Phone 9-2648

## Blackfoot . . .

(Continued from page one)

Confronted with its first major case, Judicial Council, with the backing of the associated students and administration, took the legal action. Two students submitted testimony and the bartender was found guilty as charged. The case was appealed to District Court, but dropped when the defendant changed his plea this summer.

"You students are to be commended," one of the Liquor Control Board members told a Kaimin reporter. "Few student bodies would have taken action against an establishment such as the Blackfoot. The punishment was severe, most people had expected a temporary suspension."

"The revocation means the

## STAFF STRING QUARTET ENTERTAINS AT CONVO

The new MSU Staff String Quartet played Haydn's Variations on the Austrian National Anthem for the Music School convocation Monday. The quartet consists of Eugene Andrie, violin; Florence Reynolds, cello; Gordon Childs, violin; and Eugene Weigel, viola. Gordon Childs, instructor, and Eugene Weigel, professor, are new music staff members this year.

Joneses cannot obtain a liquor license in Montana at any time. However, the Blackfoot, under new management, could apply for another license. But even then, it is doubtful that it would be granted within six months or a year.



## Old Gold's Exciting New Game for College Students Only

How would you like to spend next summer on a 40-day tour of the world? All expenses paid! Visit England, France, Italy, Greece, India, Siam, Hong Kong, Japan . . . the far-away places you've dreamed of seeing!

**1st Prize** All-expense, 40-day tour of the world for two, OR \$5,000.00 in cash

**2nd Prize** 10-day all-expense paid trip to Paris

**3rd-6th Prizes** 7-day all-expense paid trips to Bermuda

**7th-16th Prizes** RCA Hi-Fi sets—MARK IV

**17th-36th Prizes** \$100 Brooks Brothers wardrobe certificates

**50 Additional Prizes** \$25 Brooks Brothers wardrobe certificates

Beginning this week and continuing throughout the Fall semester, this paper will publish three puzzles a week, containing the letters which make up the names of American colleges and universities. The letters are scrambled and must be re-arranged to form the names of the schools. Clues with each puzzle will help you identify the correct answer.

It's fun . . . it's easy . . . start now!

Copyright 1956, Harry H. Hollister

## YOU'LL GO FOR OLD GOLDS

Either REGULAR, KING SIZE or The GREAT NEW FILTERS.

Old Golds taste terrific! The reason: Old Golds give you the best tobaccos. Nature-ripened tobaccos . . .

**SO RICH, SO LIGHT, SO GOLDEN BRIGHT!**

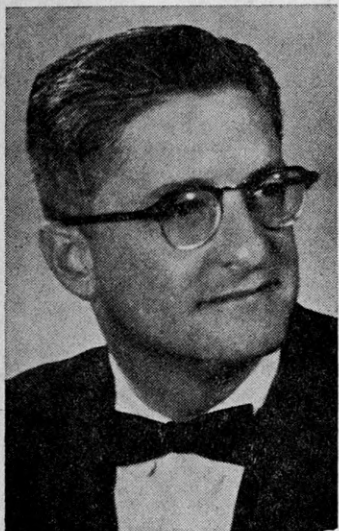


Rules and First Three Puzzles Appear on Next Page



Blumberg is New Dean of J-School

Dr. N. B. Blumberg was appointed Dean of the School of Journalism this summer. Dr. Blumberg was assistant city editor of the Washington, D. C. Post and Times Herald just before he came to MSU. He received his B.A. and M.A. degrees at the University of Colorado in 1947 and 1948. Dr. Blumberg received a Rhodes Scholarship in 1948 and got his Ph.D. in modern history from Oxford University in 1950.



Dr. Blumberg wrote several articles, some of which were published in the Nieman Reports. From 1950 to 1955 he was on the Nebraska State Selection Committee of Rhodes Scholarships. He is also adviser of the Government Information Subcommittee of the Committee on Government Operations, U. S. House of Representatives.

Law Smoker Set For Homecoming

Members of the Law School Association decided Tuesday to hold a smoker Homecoming weekend at the Law House for all law school students and alumni, according to Calvin Calton, Worland, Wyo. Entertainment will consist of a traditional skit lampooning the law school in general and the faculty members in particular. Light refreshments will be served. A law weekend, tentatively scheduled for February or March to which lawyers from throughout the state will be invited was also discussed. Scheduled for the same time are the Barristers Ball, practice court sessions, and the traditional forestry-law school basketball game.



KEEP ALERT FOR A BETTER POINT AVERAGE!

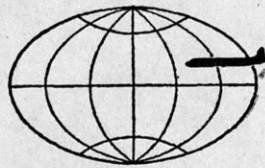
Don't let that "drowsy feeling" cramp your style in class ... or when you're "hitting the books". Take a NoDoz Awakener! In a few minutes, you'll be your normal best ... wide awake ... alert! Your doctor will tell you—NoDoz Awakeners are safe as coffee. Keep a pack handy!

15 TABLETS, 35c



Homecoming ...

(Continued from page one) Hall and Sigma Nu. All queen candidates will ride in a convertible preceding her float in the parade. Members of Bear Paw and Spur will march between each living group's float, eliminating members marching behind floats this year. Judges, who will be stationed at intervals along the route of the parade, will judge floats on originality, appropriateness of float to theme, workmanship and neatness. Homecoming committee consists of chairman Donna Kaye Bailey, Red Lodge; queen contest, Dick DeWalt, Helena, and Carla Clausen, Missoula; coronation, Portia Breitenstein, Plains, Chuck Aker, Kalispell, and Thea Williams, Billings; parade, Ike Kaufman, Great Falls, and Ed Hill, Sherman Oaks, Calif.; floats, Dick McBride, Anaconda, and Bill Chambers, Great Falls; pep rally, Lynn Spencer, Great Falls, Marg Hammer, Stanford, and Carolyn Quest, Corvallis; and secretary, Sonia Tetlie, Big Timber.



Here's How to Play TANGLE SCHOOLS

OLD GOLD'S GREAT NEW GAME

A total of 24 puzzles will appear before the Christmas holiday. Get started now in Old Gold's exciting new game for college students only.

Here are the Official Tangle Schools Rules! SAVE THEM!

1. PRIZES (a) P. Lorillard Company, the makers of OLD GOLD CIGARETTES, will award a total of 86 prizes, valued at more than \$15,000—to college students in the United States in accordance with the following Official Rules. (See complete list of prizes.) (b) This game will consist of twenty-four (24) monogrammed puzzle drawings to be published in this and other college newspapers; three puzzles each week for eight weeks, and a series of tie-breaking puzzles, if needed, as outlined in rule 2. (c) Contestants must arrange the scrambled letters from each of the 24 monogrammed drawings so that they correctly spell the name of a certain American college or university. In the scrambled drawings there are no superfluous letters, no distortion of letters, and no letters are left out to confuse or mislead entrants. A clue will be furnished with each drawing to help identify the correct answer to the puzzle. 2. (a) The person complying with all the rules of the game and solving the highest number of puzzles correctly will be declared the winner of the first prize, a 40-day tour of the world for two persons—the winner and another person of his choosing or, at the option of the winner, the first prize shall consist of \$5,000 to be paid to the winner. The person complying with all the rules of the game and solving the second highest number of puzzles correctly will be declared the winner of the second prize. In like manner, the winners of the remaining 84 prizes will be determined. (b) In case more than one person solves correctly the same number of puzzles, the prize tied for, and as many subsequent prizes as there are persons tied, will be reserved and those so tying will be required to solve a set of tie-breaking puzzles, to determine the order in which the reserved prizes will be awarded. Each of the tie-breaking puzzles will be comprised of scrambled letters forming the names of either one, two or three American colleges or universities. Clues with each puzzle drawing will indicate whether the puzzle contains one, two or three schools to be identified. If, after solutions have been submitted to this second set of puzzles, a tie or ties still remain, those tied will be required to solve another tie-breaking puzzle. Accompanying this tie-breaker will be an official list of American colleges and universities. From these, contestants will make up a list of schools and colleges in accordance with instructions to be given at that time. The contestant earning the highest score in so doing will be awarded the highest of the prizes tied for. The next highest prize will be awarded the contestant earning the second highest score and so on down through the reserved prizes that have been tied for. These tie-breaking puzzles, if necessary, will be mailed to each contestant.

P. Lorillard Company reserves the right (only in the event of further tie or ties) to require contestants to solve as many tie-breaking puzzles under supervision, and without assistance, as are necessary to determine a single winner for each prize.

3. NOTE (a) When entrants have completed solutions to the complete set of 24 initial puzzles, which are to be published three per week in this paper, the solutions are to be printed or typewritten by the entrant in the answer space provided on the puzzle (or a reasonable facsimile). The complete set of 24 puzzles must be answered, neatly trimmed and enclosed in an envelope, flat and not rolled and addressed to:—Tangle Schools, P. O. Box 26A, Mount Vernon 10, N. Y., and mailed bearing a postmark not later than December 19, 1956. Decorated, pasted or embellished puzzles are not permitted. Each set of 24 puzzles must be accompanied by a wrapper from any type OLD GOLD CIGARETTE package—(REGULAR, KING-SIZE OR FILTER KINGS) or a reasonable facsimile thereof. (b) More detailed instructions on the mailing of completed sets of puzzles will be published later. No Solutions are to be sent in separately. Save the puzzles and your solutions so that they may be submitted as a complete set at the end of the game. Entrants are not limited as to the number of complete sets of Solutions. However, each set must be submitted individually, and only one prize will be awarded to any one entrant. (c) After the deadline for mailing solutions, the correct answers to all 24 puzzles will be published in a single issue of this paper. Each contestant must keep an accurate record of all solutions and check his answers with the published correct answers.

4. WHO MAY ENTER: (a) This game is open to all bona fide college students in the United States; that is, persons who, at the time of entering, are duly registered in an accredited college or university within the continental boundaries of the United States, except that the game is not open to students whose immediate families are employed by P. Lorillard Company or its advertising agencies. Contest is subject to all State and Federal regulations. (b) Contestants may, if they prefer, make copies of the puzzles by hand. Copies of the puzzles and of OLD GOLD package wrappers reproduced by a multiple process such as carbon paper or mimeograph are not acceptable. Entrants who want back puzzles and copy of Official Rules may obtain them by addressing their request to Tangle Schools Back Puzzles, P. O. Box 9, Grand Central Annex, New York 17, N. Y., enclosing 5¢ in payment for each puzzle desired and/or rules, together with a STAMPED

IFC Meeting ...

(Continued from page one) the council members and they decided to send to the National Interfraternity Council for information regarding the workings of the quota system. Attention was then brought to the article in the Interfraternity Council constitution stating that any fraternity found attempting illegal rushing would be subject to 60 days prohibition of rushing and pledging at the discretion of the council. Although not put in the form of a motion, the members

agreed that violation of this clause during Fall quarter would place the penalty on the first 60 days of Winter quarter. The penalty would then be in effect during the designated rush-week for this school year. Other items: Agreed to have an IFC float at homecoming; Emphasized the importance of having each fraternity having an ample cheering section at the ball games; Appointed Glenn Stroehrer, PDT, Billings, as Interfraternity Athletic chairman; and Decided to have an IFC "King and Queen" dance sometime during Fall quarter.

SELF-ADDRESSED envelope. (c) Prior to receiving a prize each winner may be required to sign an affidavit certifying that he or she is eligible to compete in accordance with rule 4-a; that he or she has not bought, sold or exchanged the puzzle solutions and is not acting for, either by proxy or in collaboration with, any person who is not qualified to participate under the rules.

5. METHOD OF JUDGING: Decision of the judges is final and contestants so agree upon entering the game. Solutions to the puzzles will be judged on correctness, including the spelling of the names. All entries become the property of P. Lorillard Company. None will be returned. P. Lorillard Company cannot be responsible for any solutions unduly delayed or lost in the mails; this also applies to mail from the P. Lorillard Company to any contestant. On entering the game, each contestant accepts the foregoing rules as binding. P. Lorillard Company reserves the right to disqualify any entrants not conforming. Evidence indicating collusion by or inelegibility of contestants will automatically disqualify such contestants. P. Lorillard Company reserves the right to correct any typographical errors or other errors which may appear in any published matter in connection with this game. P. Lorillard Co., insofar as publication of puzzles is concerned, is responsible only for submitting material for publication to newspapers involved.

Copyright 1956, Harry H. Hollister

SAMPLE PUZZLE



CLUE: The third oldest institution of higher education in the United States, this university was chartered in 1701, and later named for a native of Boston. Walter Camp was a great football coach here.

ANSWER: YALE

Save this alphabet. Letters shown in all puzzles will have the same characteristics. Notice the M's have straight sides; the W's are slanted. Note the difference between the N's and the Z's.

ABCDEFGHIJKLMN  
NOPQRSTUVWXYZ

START NOW! Start smoking those great Old Gold cigarettes ... start playing the great new game, "Tangle Schools"! Win a free tour of the world for two!

PUZZLE NO. 1



CLUE: Situated in an attractive New England town, this college for women opened in 1875. A training school for women naval officers was held here during World War II.

ANSWER \_\_\_\_\_

Name \_\_\_\_\_  
Address \_\_\_\_\_  
City \_\_\_\_\_ State \_\_\_\_\_  
College \_\_\_\_\_

PUZZLE NO. 2



CLUE: This university is located in the Midwest, and is known for its large engineering schools. It was first opened to students in 1874.

ANSWER \_\_\_\_\_

Name \_\_\_\_\_  
Address \_\_\_\_\_  
City \_\_\_\_\_ State \_\_\_\_\_  
College \_\_\_\_\_

PUZZLE NO. 3



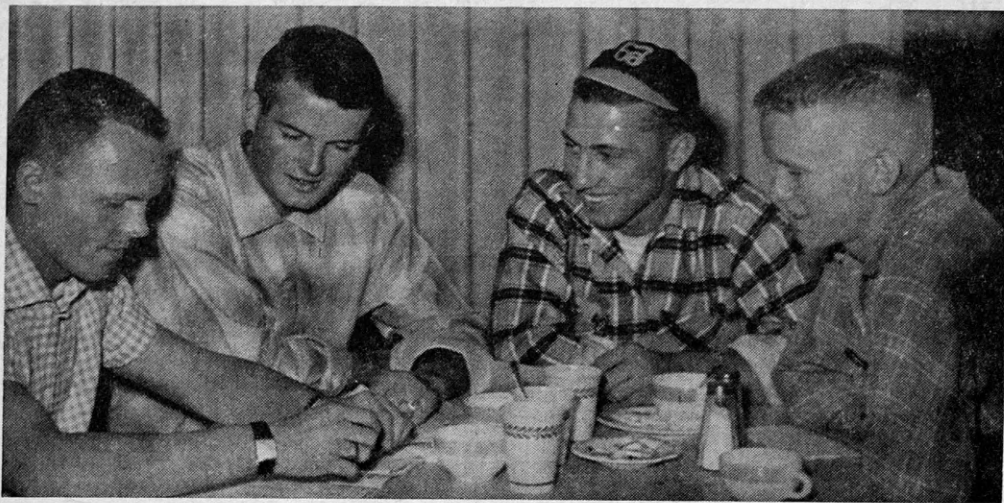
CLUE: Founded in 1834, this university acquired its present name 50 years later—in 1884. Originally a medical college, it issued the first degree in medicine conferred in the Southwest.

ANSWER \_\_\_\_\_

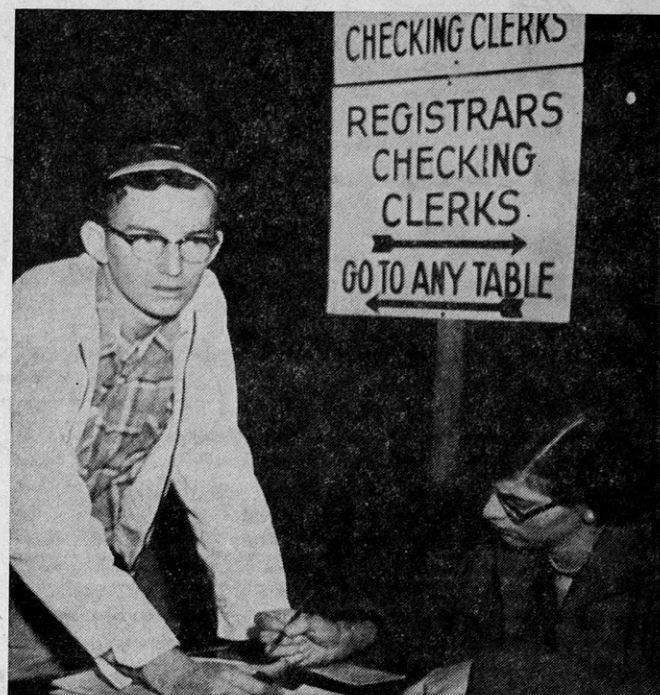
Name \_\_\_\_\_  
Address \_\_\_\_\_  
City \_\_\_\_\_ State \_\_\_\_\_  
College \_\_\_\_\_



# Freshmen Get Well Acquainted With MSU



**MAYBE I'LL TAKE . . .** Four freshmen discuss registration and get acquainted over cokes 'n' coffee at the Grill. Shown here from right to left are Tom Nash, Butte; Frank Rogers, Cleveland, Tenn.; John Kennelly, Butte, and John Honey, Missoula.



**NEAR THE END** — Donald Hegg, Broadview, a weary freshman, nears the end of the line as he waits for a checker to draw the final red line of approval on his registration book. One of the largest freshman classes in recent years checked in for registration Friday and Saturday.

Copy and Photos  
By GENELL JACKSON

A hectic week of tests, long lines, interviews, parties, dances and just getting acquainted ended Saturday for one of the largest

freshman classes in recent years. The routine of study, classes and University life began Monday.

The newcomers began arriving on campus from all points of the nation early Sept. 22. Most of them experienced their first MSU "line standing" that evening while waiting for food at the Lodge. They were officially welcomed to MSU during the dinner hour Monday by Pres. Carl McFarland.

"You will find that this University is like a small city," he told the class of '60. "We have rules, stores, houses—most of the things you find in a city. But it is more; it is also a University, a place for learning, both academically and socially."

The agenda for the next few days was a whirl of testing sessions, tours, interviews with advisers and get-acquainted mixers.

One of the first-week highlights was the Buddy DeFranco dance in the Yellowstone Room. About 800 students danced to the DeFranco music, the first name band to play here since Ted Weems was here early last fall.

Saturday afternoon, the freshmen made the traditional climb up Mt. Sentinel to whitewash the "M" and quite traditionally, returned with a fair portion of the whitewash on them.

The Spurs and Bear Paws sponsored their annual Banie Bounce that evening, with freshmen with their Class of '60 hats as guests for the night.

Freshmen were also introduced to a more serious side of college life Sunday. Many of the campus religious groups called for freshmen and took them to the church of their choice. Interchurch Council sponsored a picnic on Dorn-



**THE DO AND DON'T** — June Bowman (right) tells Butch Chapple why her velvet and net evening gown is "all wrong" for a fraternity fire side. Both girls, from Billings, were models at the AWS big and little sister party and style show.



**SMILE AND . . .** Bear Paw Paul Nordstrom explains the ID picture setup to Marcia Neatman, a freshman from Missoula. The picture line was by far the longest encountered by any registrant. At times, it circled the Field House several times.

Many other campus organizations made their "pitch" during orientation. Grizzly Growlers organized and elected new officers, AWS sponsored their annual big

and little sister party with a "do and don't" style show, new cheer leaders and pom pom girls were selected and other University groups introduced.

## WELCOME BACK!

*Make our station your headquarters  
for your car needs.*

**FRESHMEN—**

*Drop in and get acquainted—  
We'll Treat You Right!*

**NEI'S CONOCO**

Opposite Ford Garage  
South 4th & Higgins

## — BOWLING —

*Grand Opening*

**HELLGATE CENTER ALLEYS**

Basement of Women's Center

**SATURDAY, OCTOBER 6**

— NOON TO MIDNIGHT —

FREE Soft Drinks and Doughnuts 1 to 4 p.m.  
(or while they last)

**DOOR PRIZE: Five Free Games**

MEN: Any 211 or Higher Game  
WOMEN: Any 175 or Higher Game

**ON THE HOUSE!**