

University of Montana

## ScholarWorks at University of Montana

---

Montana Kaimin, 1898-present

Associated Students of the University of  
Montana (ASUM)

---

10-11-1956

### The Montana Kaimin, October 11, 1956

Associated Students of Montana State University

Follow this and additional works at: <https://scholarworks.umt.edu/studentnewspaper>

**Let us know how access to this document benefits you.**

---

#### Recommended Citation

Associated Students of Montana State University, "The Montana Kaimin, October 11, 1956" (1956).

*Montana Kaimin, 1898-present.* 3242.

<https://scholarworks.umt.edu/studentnewspaper/3242>

This Newspaper is brought to you for free and open access by the Associated Students of the University of Montana (ASUM) at ScholarWorks at University of Montana. It has been accepted for inclusion in Montana Kaimin, 1898-present by an authorized administrator of ScholarWorks at University of Montana. For more information, please contact [scholarworks@mso.umt.edu](mailto:scholarworks@mso.umt.edu).



# THE MONTANA KAIMIN

Montana State University, Missoula, Montana

Volume LVIII Z400

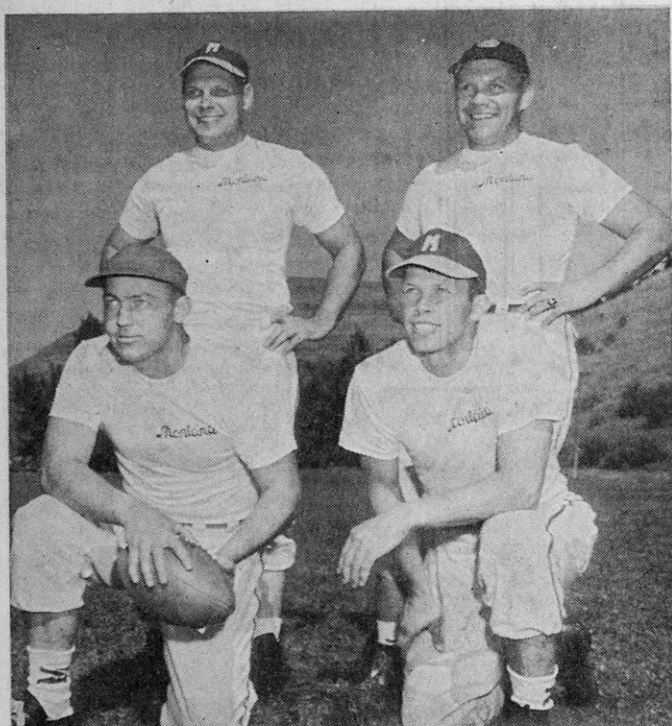
Thursday, October 11, 1956

No. 5

Vote for  
the  
Luscious  
Lovelines

## Street Parade Scheduled Friday

### Guide Grizzlies' Destiny . . .



Jerry Williams, head football coach, is pictured (kneeling left) with his three assistants who will help him mold the future for MSU football. With Williams are Hal Sherbeck (kneeling right) frosh coach, and Bob Zimny (standing left) and Laurie Niemi (standing right) line coaches.

### I. D. Card Needed For Utag Game

Students planning to attend the Homecoming game Saturday or other football games this fall must present Identification Cards to ticket takers, according to Bob Dundas, Field House ticket manager.

Students who registered late will be admitted to the Utah State game on presentation of a receipt for payment of fees, Dundas said.

Cards are now available at the Film and TV Building, Dundas said. They will be issued from 1 to 5:30 p.m. today and Friday from 8 to 11 a.m. and 1 to 4 p.m.

Students who do not have an Identification Card or a receipt will be charged the full admission price, Dundas said.

### SHOW RECEIPT OF FEES PAID IN VOTING FOR QUEEN

Showing a receipt of fees paid or an activity card will permit all fellows to vote for homecoming queen, announced Bruce Cook, ASMSU business manager. Voting is in the Grill today until 5 p.m. and tomorrow from 9 a.m. to 3 p.m.

### Calling U . . .

Alpha Phi Omega will meet tonight 9 to 10 in Conference Room 3 of the Lodge. All former Boy Scouts are welcome to attend.

Royaleers meet tonight in the Yellowstone Room of the Lodge at 7:30.

### PAINTING DISPLAYED

A painting by Leslie Peters, ex-'39, showing "Buffalo Going to Water" will be on display at the Alumni House during Homecoming.

### Quarter System Slim Winner

The quarter system won over the semester plan by a slim, ten-vote margin in the faculty secret ballot vote which concluded Wednesday.

The final count showed 118 favoring retaining the present system, 108 wanted a change to semester, 19 expressed no preference, one ballot said "not voting" and another instructor failed to cast a ballot.

This is, however, not conclusive. It means merely that the faculty will recommend that the quarter system be retained.

### IFC Reviews Pledge Quotas

Discussion concerning installing a pledge quota system was the principal item on the Interfraternity council's agenda Tuesday.

Members agreed that a fraternity may suffer from being too large as well as being too small. If all eight fraternities had comparatively equal numbers, they believed all would benefit.

A committee of one member from each house was assigned to draw up a sample quota system which would be submitted for approval of each house. Adoption of such a quota system are required to be unanimous.

A maximum number of pledges, under a sample system discussed, would be allowed each fraternity. A prospective pledge could state his first choice, but if the fraternity had met its quota, he could either try for another fraternity or wait until next year to apply again for a place vacated by a graduated senior.

Members agreed that this system would, over a period of years, equalize membership in the eight houses. If increased enrollment warranted a change, they said, the maximum quota could be raised equally for all houses.

### BRONZE OF LEWIS & CLARK SHOWN AT ALUMNI HOUSE

A three and one-half foot bronze of Lewis and Clark and Sacajawea will be displayed at the Alumni House during Homecoming. Mrs. Charles M. Russell commissioned Los Angeles sculptor Lyons to create the statue from a sketch by her late husband, the famed Charles M. Russell.

### Colorful Affair to Kick-off Annual Homecoming Activities

A gala street parade, featuring flares and noise-makers, and led by MSU's Pep Band along with cheerleaders and pom-pom girls, has been scheduled for Friday night to launch Homecoming activities, according to Traditions Board Chairman Dick Barney.

Starting at 6:30 the parade will begin on Gerald avenue, then proceed up University to Main Hall. At Main Hall the 1956 Homecoming Queen will be crowned and a pep rally staged, Barney said.

Living groups will join the procession as it passes their houses, according to Barney. Kappa Kappa Gamma and Sigma Nu will start the parade with Phi Sigma Kappa and Kappa Alpha Theta coming into line next.

Alpha Phi, Sigma Chi, and Sigma Alpha Epsilon will join the parade before it goes up University avenue. Sigma Kappa and Sigma Phi Epsilon are scheduled to join the parade first on University.

Then Theta Chi, Delta Delta Delta, Phi Delta Theta, Delta Gamma, Synadelphic and Alpha Tau Omega will join in that order, Barney said.

### M Club Feature

When the procession first reaches the oval a new feature will be handled by the M-Club "This should be quite a spectacle," Barney said.

First on the agenda at the rally

### Swimming Pool May Be Topic At CB Meeting

The possibility of Montana State University getting a year-round swimming pool may be discussed at the Central Board meeting scheduled for 4 p.m. this afternoon.

Several student government officers have been seeking opinions on the proposed pool the last few days. The questions they encountered could be discussed at the meeting.

One of their main problems is the cost of the pool which is estimated to be near \$200,000. The question has arisen if this is adequate to build the pool desired by the students.

Other problems the officers were questioned about concern the seating capacity, type of construction, when actual construction will begin, and access students would have to the pool.

will be the introduction of the football team with its coaches. At this time it is expected Head Coach Jerry Williams will speak.

Before the crowning of the queen a short pep rally will be held, Barney said. At this time the band and cheerleaders are to lead the students and others in yells and songs.

The final event of the rally will be the crowning of the queen. Ten girls are running for queen and voting started at nine this morning.

### Music Professor Announces '56-'57 Concert Series

The program of the Recital and Chamber Music series for this school year was announced by Eugene Andrie, associate professor of music. The program consists of six concerts by Charlotte Reinke, soprano; the MSU Trio with guest artists; Alexander Schreiner, organist; the MSU String Quartet; the Budapest String Quartet and Frank Mannheimer, pianist.

"The tickets are available for \$2.50 in the Music School office. Admission will be by season ticket only," Mr. Andrie said. "The low price is made possible through the sponsorship of the Music School Foundation."

All concerts will be in the School of Music Recital Hall at 8:15 p.m.

The first concert will be October 23 and will feature Charlotte Reinke, soprano. The Metropolitan Opera selected her as winner of their regional Metropolitan Opera Auditions of the Air, in Minneapolis.

The MSU Trio will appear on November 20 with a guest artist. The trio consists of Eugene Andrie, violin; Rudolph Wendt, professor of music, piano; and Florence Reynolds, assistant professor of music, viola.

## Vote This Week For Homecoming Queen Candidates



DIANE DAVIS  
Tri Delt



MYRNA KRONMILLER  
Brantly Hall



SHIRLEY SWENSON  
Turner Hall



HELEN LEE RYAN  
Corbin Hall



Photos by Catlin  
ARDICE SAYRE  
Kappa Alpha Theta



Editorially . . .

## The DeFranco Flop !

Montana State University students lost more than \$500 on the Buddy DeFranco dance. Students lost this money because we pay for entertainment of this type. However, figures are not complete. The loss may be closer to \$750.

The idea to have a big name band play during the first week of school was conceived in August. When this decision was made, it was final that there would be no rush week; and it was believed a big name band would top off Orientation Week.

However, it flopped and flopped miserably. Approximately 500 students went, and there weren't enough girls to go around for the stag men. Many complained DeFranco was "not a big name band," but he has been rated among the top clarinetists for the last 11 years.

Two things were the main factors causing the DeFranco flop. One was the timing. When arrangements were first made this was considered an excellent time, but the dance proved otherwise.

The second reason, and probably the biggest, was the fact that townspeople were not allowed to attend. Each year the Nightclub Dance makes money, and it costs as much to bring a name band here. But, townspeople are allowed to attend.

"I have no doubt that we could have made money on DeFranco had we advertised downtown and invited everyone," Tommie Lu Middleton, asst. to the director of student activities facilities, said. Miss Middleton, with Marilyn Shope, ASMSU vice president, was responsible for bringing DeFranco.

There is a strong possibility Ralph Flanagan will appear here in January, with other name bands coming during the year. Whether or not they will be any more successful than DeFranco remains to be seen.—J.G.B.

## Little Man on the Campus

## Kilbourn, Kimball Added to Faculty Of Law School

William D. Kilbourn Jr. and Edward L. Kimball have been appointed assistant professors on the School of Law faculty and began work this quarter.

Kilbourn, who teaches taxation, was graduated from Yale with a B.A. in economics in 1949. While doing advanced work at the Columbia University Graduate School of Business, he received the Rosoff Prize in accounting in 1950. He received his LL.B. from the Columbia School of Law where he was selected Ken scholar, Stone scholar and moot court judge.

Kilbourn, who teaches tort, property, and criminal procedure, taught evening courses at Rutgers University in New Jersey while he was employed by the Radio Corporation of America.

Kimball received a B.A. in history in 1953 and a law degree in 1955 from the University of Utah. He was editor-in-chief of the Utah Law Review and wrote several articles for that publication. Kimball received his M.A. degree this summer while studying under the University of Pennsylvania's bicentennial fellowship in criminal law and administration.



## Germany in Cultural Rebirth, Says Consul

Despite many years of Nazi control and tremendous physical hardships, cultural life in West Germany is developing freely alongside that of western nations, Dr. Werner Oppel, Seattle, German consul for the four northwestern states and Alaska, said in a speech before the Liberal Arts Club here last week.

Immediately after World War II, Dr. Oppel said, make-shift theaters were gathered together, and operas reopened. The works of many foreign writers, musicians and artists have become popular in Germany, he said, and plays like Wilder's "The Skin of Our Teeth" and Tennessee Williams' "The Glass Menagerie" have had successful runs there.

The world knows of the economic recovery which West Germany has made since the war because the signs are readily apparent, the doctor said, but this other kind of recovery—the revitalization of cultural life—is just as important.

Dr. Oppel showed three German films, one of which commemorated the Mozart bicentennial. This was the first presentation of the film in the United States, he said. Another film, a documentary tracing German culture through the centuries, was presented by Dr. Oppel to the Department of Foreign Languages as a token of Germany's interest in the work of the department here.

## Profs to Attend Conference

Three MSU professors have been invited to attend the Great Plains Conference on Higher Education at the University of Oklahoma, Oct. 18-20, Dr. Nan C. Carpenter, Chairman of the Department of English, announced today.

Professor Bert B. Hansen of the Department of Speech, Dr. Thomas Payne, associate professor of History and Political Science, and Dr. Carpenter will attend the two-day conference and discuss what can be done to keep standards high in American colleges with increasing enrollments.

Professor Hansen and Dr. Payne will be in charge of two discussion groups at the conference. Dr. Carpenter is a member of Dr. Payne's group which will discuss, "What specific steps may be taken by the institutions of the Great Plains to elicit a sense of responsibility for higher education from the public."

## The Montana KAIMIN

Established 1898

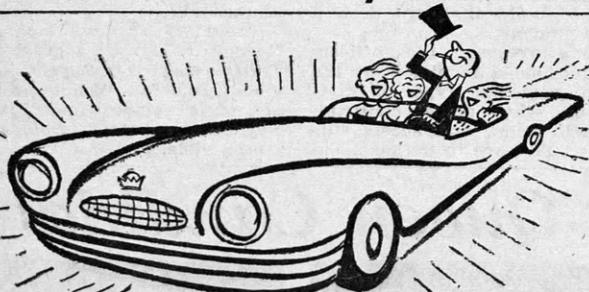
Published every Tuesday, Wednesday, Thursday and Friday of the college year by the Associated Students of Montana State University. Represented for national advertising by National Advertising Service, New York, Chicago, Boston, Los Angeles, San Francisco. Entered as Second-class matter at Missoula, Montana, under Act of Congress, March 3, 1879. Subscription rate \$3.00 per year.

Member  
Montana State Press Association  
Member, Rocky Mountain  
Intercollegiate Press Association

Editor, John Bansch; Business Manager, Lee DeVore; Associate Editor, Gary Sorenson, Jayne Walsh; Circulation Manager, Bill Bradford; Adviser, Prof. E. B. Dugan.

Printed by the University Press

## IT'S FOR REAL! by Chester Field



### IF I HAD A MILLION!

"Life," he cried, "is so unfair I should have been a millionaire! I'd drive a car, a white Jaguar with leopard trim and built-in bar, Complete with blondes and red heads too, A movie queen or two would do . . . I'm lazy, crazy, debonnaire I'd make a perfect millionaire!"

"Instead," he sobbed, "at twenty-five I'll have to work to stay alive!"

**MORAL:** If you are \$999,999.00 short of being a millionaire, but you like your pleasure big, Enjoy the big full flavor, the big satisfaction of a Chesterfield. Packed more smoothly by Accu-Ray, it's the smoothest tasting smoke today!

So, try 'em. Smoke for real . . . smoke Chesterfield!



## Keepsake DIAMOND RINGS

### Interlocking Ring Set



\$150.00  
KENNAN-LOCK  
Wedding Ring—\$75.00

Your Exclusive Keepsake Dealer in Missoula

Bob Ward & Sons  
321 N. Higgins

## Buttreys



that's really warm!

12<sup>95</sup>

### Look:

- warm knit collar
- comfy knit trim
- storm wristlets
- heavy quilted interlining
- Dan River poplin

Newly exciting, boldly detailed with double breasted toggle close. A car coat to wear in fashion anywhere. Water repellent. Choose natural, light blue, charcoal. Sizes 12 - 18. This BIG VALUE at Buttreys now!

Buttreys



## Utah Aggies Boast Power

The powerful Utah State Aggies play here Saturday afternoon and a capacity Homecoming Day crowd is expected to witness the Grizzlies' first home appearance of the 1956 season.

Montana fans will have the opportunity of seeing Jack Hill, the Aggies' 185 pound senior half-back, in action. Hill is regarded by some experts as the greatest back the Skyline conference has produced in many seasons.

Hill currently leads the nation in rushing with 381 yards gained in 51 carries. The Aggies' triple threat star leads Skyline opponents in scoring, rushing and punting. He has scored 39 points, and boasts a 41.6 punting average.

### Other Backs

Utah Coach Ev Faunce has other good backs to go along with Hill. Halfback John Whatcott is 20th in the nation in rushing, carrying the ball 27 times for 221 yards. Whatcott leads Skyline pass receivers with 12 receptions good for 183 yards and two touchdowns.

Quarterback Bob Winters, a transfer from Yakima Junior College, ranks 8th in the nation and leads the Skyline, completing 24 passes out of 37 attempts for 353 yards. Fullback Norm Prince is another backfield standout who picks up the short yardage when it is needed.

Utah State's forward wall is bolstered by Jack Harvath, end; tackles Larry Sorenson and Tom Ramage and center Joe Librizzi.

Utah State holds victories over Drake, Denver and Arizona and their only loss came at the hands of New Mexico. In last week's 12-7 victory over Arizona, the Aggies showed a very strong pass defense, intercepting five. Hill turned a pass interception into a 62 yard touchdown. Fullback Prince scored the other Utah State touchdown with a 59 yard run.

### Grizzly Injuries

Three Grizzlies suffered injuries in the Denver game. Tackle Bob McGihon and halfback Don Williamson suffered sprained ankles but should see action Saturday. Montana Bockman, sophomore guard, will miss the game due to an injured knee.

Last year the Aggies ran to a 32-6 victory over Montana in their Homecoming game at Logan. Montana met Utah State in the Grizzlies' 1954 Homecoming game and the Silvertips came out on top 20-13.

### AQUAMAIDS SCHEDULE TRY-OUTS NEXT WEEK

Aquamaids, women's swimming honorary, has scheduled try-outs for Oct. 16, at 7 p.m., and Oct. 21, at 4:15 and 7 p.m., according to Joani McFarland, Missoula, president. Girls are expected to do the back stroke, front crawl, breast stroke, side stroke, and a back dolphin. The try-outs will be held in the Men's Gym.

### POOL OPEN FOR WOMEN EVERY THURSDAY NIGHT

The swimming pool will be open for recreational swimming for women students on Thursday evenings from 7 to 9 p.m., according to Mavis Lorenz, Health and PE instructor. Marlene Kolstad, Billings, and Edwina Sievers, Missoula, will alternate as life guards.



On your way to town,  
to enjoy ice cream and  
fountain treats at

**HANSEN'S**  
ICE CREAM STORE  
519 S. Higgins

# CHINSKE OPTIMISTIC ABOUT I-M ARRANGEMENT AS FOUR CRAIG HALL TEAMS ENTER GRID RACE

By JIM BERRY

It was a smiling Ed Chinske who surveyed the remodeled University intramural program Wednesday afternoon.

Four good reasons for the optimism were the entries from Craig Hall of four "wing" teams to compete in the touch football program. The four squads are composed, as nearly as possible, from members living in the same four wings. Only in a few instances, the intramural director said, are boys playing on teams from wings other than the ones in which they live.

New teams are from the first west, second west, second north, and third north wings of the 12 wing dormitory.

The new entries enabled Chinske to establish a "C" league in touch football. Last year there were only "A" and "B" football leagues.

"If we can keep them interested, the program will probably grow," Chinske said, with an eye cocked toward basketball season.

### EVEN DIVISION

Teams who will be fighting in "A" league ball are Fort Falcons, Sigma Nu, Forestry, Phi Delta Theta, Fi Alpha Falfa, Phi Sigma Kappa, and Sigma Chi.

The "B" league roster includes Alpha Tau Omega, Galloping Geese, Sigma Phi Epsilon, Jumbo Hall, Theta Chi, Sigma Alpha Epsilon, and Elrod Hall.

Making up the new "C" league are Butte Rats, Sunshine Seven, and the four Craig Hall squads. Chinske said all touch football games will begin at 4 p.m.

### "A" LEAGUE SCHEDULE

Oct. 15—field 1, Fort Falcons vs. Sigma Chi; field 2, Sigma Nu vs. Forestry; and field 3, Phi Delta Theta vs. Fi Alpha Falfa.

Oct. 19—field 1, Phi Sigma Kappa vs. Sigma Chi; field 2, Fort Falcons vs. Forestry; and field 3, Sigma Nu vs. Phi Delta Theta.

Oct. 25—field 1, Fi Alpha Falfa vs. Sigma Chi; field 2, Forestry vs. Phi Sigma Kappa; and field 3, Fort Falcons vs. Phi Delta Theta.

Oct. 30—field 1, Sigma Nu vs. Fi Alpha Falfa; field 2, Forestry vs. Sigma Chi; and field 3, Fort Falcons vs. Phi Sigma Kappa.

Nov. 5—field 1, Phi Delta Theta vs. Sigma Chi; field 2, Forestry vs. Fi Alpha Falfa; and field 3, Sigma Nu vs. Phi Sigma Kappa.

Nov. 8—field 1, Fort Falcons vs. Fi Alpha Falfa; field 2, Sigma Nu vs. Sigma Chi; and field 3, Phi Delta Theta vs. Phi Sigma Kappa.

### "B" LEAGUE SCHEDULE

Oct. 11—field 1, Alpha Tau Omega vs. Galloping Geese; field 2, Sigma Phi Epsilon vs. Jumbo Hall; and field 3, Theta Chi vs. Sigma Alpha Epsilon.

Oct. 16—field 1, Alpha Tau Omega vs. Elrod Hall; field 2, Galloping Geese vs. Sigma Phi Epsilon; and field 3, Jumbo Hall vs. Theta Chi.

Oct. 22—field 1, Sigma Alpha Epsilon vs. Elrod Hall; field 2, Alpha Tau Omega vs. Sigma Phi Epsilon; field 3, Galloping Geese vs. Jumbo Hall.

Oct. 26—field 1, Theta Chi vs. Elrod Hall; field 2, Sigma Phi Epsilon vs. Sigma Alpha Epsilon; field 3, Alpha Tau Omega vs. Jumbo Hall.

Nov. 1—field 1, Galloping Geese vs. Theta Chi; field 2, Sigma Phi Epsilon vs. Elrod Hall; and field 3, Alpha Tau Omega vs. Sigma Alpha Epsilon.

Nov. 6—field 1, Jumbo Hall vs. Elrod Hall; field 2, Sigma Phi Epsilon vs. Theta Chi; and field 3, Galloping Geese vs. Sigma Alpha Epsilon.

Nov. 9—field 1, Alpha Tau Omega vs. Theta Chi; field 2, Galloping Geese vs. Elrod Hall; and field 3, Jumbo Hall vs. Sigma Alpha Epsilon.

### "C" LEAGUE SCHEDULE

Oct. 12—field 1, Butte Rats vs. Sunshine Seven; field 2, Craig first west vs. Craig second north; and field 3, Craig second west v. Craig third north.

Oct. 18—field 1, Butte Rats vs. Craig first west; field 2, Sunshine Seven vs. Craig third north; and field 3, Craig second west vs. Craig second north.

Oct. 23—field 1, Butte Rats vs. Craig second west; field 2, Sunshine Seven vs. Craig first west; and field 3, Craig second north vs. Craig third north.

Oct. 29—field 1, Butte Rats vs. Craig second north; field 2, Sunshine Seven vs. Craig second west; and field 3, Craig first west vs. Craig third north.

Nov. 2—field 1, Butte Rats vs. Craig third north; field 2, Sunshine Seven vs. Craig second north; and field 3, Craig first west vs. Craig second west.

## SMOKERS!

## CIGARETTE SALE

Thursday at the Lodge

Get 2 pkgs. of Chesterfields  
or L & M for the price of one

LIGGETT & MEYERS TOBACCO CO.

## Money Getting Scarce?



You don't need  
a Crystal Ball or  
a Magician's Hat to  
find out how to save!



Patronize  
**KAIMIN ADVERTISERS**  
The prices are right  
for your budget



## PDT, SN Win Touch Football Contests Wed.

Three touch football games opened the intramural season Tuesday. Shutouts occurred in each game.

Phi Delta Theta pasted the Forsters 27-0; Fi Alfa Falfa ran away from Phi Sigma Kappa, 20-0; and Sigma Nu defeated the Fort Falcons, 13-0.

Tonight's games find the "B" league members taking over the Clover Bowl. Alpha Tau Omega meets the Galloping Geese on field one, Sigma Phi Epsilon takes on Jumbo Hall on field two, and Theta Chi runs into Sigma Chi on number three field. All games begin at 4 p.m.

In other intramural action Tuesday, Newt Simmons defeated John Ronald in tennis and the victor will meet Paul Weingart in the winners bracket. Ronald will play Lanny Gorman in the losers bracket. Doug Vollmer won on a forfeit from Dwayne Brigham.

IM bowling begins Oct. 16 and 16 teams have entered. Bowling will continue throughout the winter with keggers bowling Tuesday and Wednesday nights and Saturdays.

Bowling entrants are Sigma Nu, Sigma Chi, Phi Sigma Kappa, Keglers, Sigma Phi Nothing, Alpha Tau Omega, Sigma Alpha Epsilon, Sigma Rhee, Fi Alfa Falfa, Theta Chi, Sonowae, Turkeys, Forestry, Jumbo Hall, Sigma Phi Epsilon, and Cottonpickers.

The golf tournament which is normally held in the spring will be held this year Oct. 14 at the Polson links. Competition will be on individual performance instead of team performance.

Individuals that have entered the golf tourney are: Pete Mooney, John Powell, John Ronald, Cal Ness, Bill Todd, Bill Lawton, Bob Vogel, Don Casagrande, Max Yandt, Buck Bundhurd, Stan Nicholson, Bob Isner, Jack Peterson, Evan Anderson, Pete Lee, Jay White, and Van Olsen.

### NEW BEAR PAWS HEAR COGSWELL AT BANQUET

The new Bear Paws were given a banquet by the old members Tuesday night in the Silverbow Room of the Lodge.

Honored guests included Thelma Stubblefield and Carole Domke, Spurs; Dr. and Mrs. Vedder M. Gilbert; and Andrew Cogswell, dean of students. Dean Cogswell outlined the history of the Bear Paws for the new members.

## NEW

### Mackshore Classics

in fine combed cotton broadcloth and No Fade Pima.

The "Pronto" shirt ...\$3.98

Boy Collar shirt ...\$2.98

Many other styles in all new colors.

## NEW

### Fall Skirts

Tweeds  
Flannel  
Felt

Priced from \$6.95

CHARGE, BUDGET,  
OR LAYAWAY

at

**Cummins**  
STORE FOR WOMEN

## Little Man on the Campus

by Dick Bibler



## Pub-Travel Airs Projects

Pamphlets for self-conducted tours, high school Leadership Camp, and billboards advertising MSU, were projects discussed at a Pub-Travel Committee meeting, Tuesday evening.

C. F. Hertler, associate professor of health and physical education, announced the date for the 1957 Interscholastic as May 17 and 18.

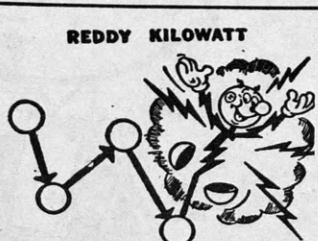
However, this date is not final until approved by Rex Dalley, executive secretary of the Montana High School Association. Hertler gave approval to Pub-Travel to make plans for the Leadership Camp to be held the same weekend as Interscholastic.

The committee decided to edit a pamphlet for self-conducted tours of the campus. According to Dee Scriven, chairman, the pamphlets will aid visitors to the campus and also cut down on the extra work required of Spurs and Bear Paws in conducting special tours.

The possibility of erecting billboards on the outskirts of Missoula proclaiming the city as the "Home of Montana State University" was discussed.

Previous plans by the committee to charter a special train for the Wyoming-Montana game in Billings, Nov. 10, were discarded when Ross Miller, acting editor of publications, announced that due to advance sales student tickets to the game were not available.

—Grind 'em to a pulp, Grizzlies—



**THE MIGHTY ATOM**  
...in Person!

TRADE MARK

Power is cheap and  
abundant in Montana

**MONTANA POWER**  
Serving a GROWING State

## Three Men Added To MSU Faculty

Dr. Wolfgang Schmidt and Dr. L. A. Schmittroth are new members of the Mathematics Department this year.

Dr. Robert L. Van Horne has been appointed dean of the MSU School of Pharmacy.

Dr. Schmidt, an Austrian, will arrive Thursday evening at MSU. He received his doctorate at Vienna in 1955 and was scientific assistant at Vienna's Institute for Theoretical Physics before assuming the MSU position.

Dr. Schmittroth was born in Dillon. He studied for more than a year at the University of Goettingen, Germany, and received his doctorate from Stanford in 1955. He was a Pierce instructor at Harvard University before he came here.

Dr. Van Horne received his B.A., M.A. and Ph.D. from the University of Iowa in 1940, 1947 and 1949, respectively.

The new dean joined the University of Iowa staff in 1946 as an associate in pharmacy. In 1954 he became an associate professor.

Dr. Van Horne is a member of the American Pharmaceutical Association, the American Association for the Advancement of Science, and the Iowa Pharmaceutical Association. He is now chairman of the American Association of Colleges of Pharmacy committee on the status of pharmacists in government service.

## Women to Have New Music Course

The School of Music wants to start a women's chorus. The University has not had a women's chorus for several years, Dr. Herbert M. Cecil, Assistant Professor, said today.

The group will meet Tuesdays and Thursdays at 3 p.m. in Music 218 and will be directed by Dr. Cecil. The course gives one credit.

No experience will be required and there will be no audition for admittance, he said.

## Classified Ads . . .

FOR SALE: Good steam iron. Call Carole Lee, 9-1235

WILL BOARD one or two male students. Call 9-8536

ATTENTION campus dance bands. All bands desiring to be put on A.E. of M. Local 498's approved list sent to all campus living groups, please have a representative at Missoula Trades and Labor Council office, Union Hall, at 7:00 p.m. Thursday.

FOR SALE: Used stencil duplicator, \$40. Dorothy M. Johnson, Journalism 209.

WANTED: Married student with trailer to live at Vet Clinic to take night calls, clean kennels. All facilities except lights. Contact student employment office.

FOR SALE: German made camera-Minox. Perfect condition. Call Ken Keefe 207 Elrod.

## Judicial Council Positions Open

Applications are being accepted to fill two positions on Judicial Council, according to Chairman Dave Burton. Applicants must be male students with junior standing.

Ron Paige resigned from the Council because of a conflicting football schedule. The other vacancy was created when Howard Mahan did not return to school.

Students wishing to apply should see either Andrew Cogswell, dean of students, or Burton.

## Square Dancers Elect New Officers

The Royaleers, University square dance group, elected officers at a meeting Oct. 2.

Elected were Addison Carlson, treasurer; Janice Baker, secretary; Kathy O'Neil, record custodian; and Joyce Copenhaver, costume custodian.

Weekly square dance sessions are scheduled every Tuesday at 7:30 p.m. in the Lodge. The first meetings of the group will be dedicated to teaching beginning square dancers and new members, according to club officers.

— PATRONIZE YOUR KAIMIN ADVERTISERS —

## WELCOME! MSU "Alums"

FOR SUPERB GOOD LOOKS  
COMFORT AND STYLE  
THERE'S NOTHING LIKE

*Fenway Flannel*

America's finest  
worsted flannel priced

**\$50**

Fenway Flannel, an exclusive fabric by Clothcraft, is extra special...all the way. Flattering and eminently suitable for every business or social occasion, expertly tailored in the new slimmer look. Choose yours from our full size range in Light Grey, Cambridge Grey or Charcoal, 2 and 3 button styles.

Also the famous  
Clothcraft Navy Blue  
sheen gabardine...\$50

MEN'S WEAR  
...street floor

*The Mercantile*