

University of Montana

ScholarWorks at University of Montana

Montana Kaimin, 1898-present

Associated Students of the University of
Montana (ASUM)

11-7-1958

Montana Kaimin, November 7, 1958

Associated Students of Montana State University

Follow this and additional works at: <https://scholarworks.umt.edu/studentnewspaper>

Let us know how access to this document benefits you.

Recommended Citation

Associated Students of Montana State University, "Montana Kaimin, November 7, 1958" (1958). *Montana Kaimin, 1898-present*. 3469.

<https://scholarworks.umt.edu/studentnewspaper/3469>

This Newspaper is brought to you for free and open access by the Associated Students of the University of Montana (ASUM) at ScholarWorks at University of Montana. It has been accepted for inclusion in Montana Kaimin, 1898-present by an authorized administrator of ScholarWorks at University of Montana. For more information, please contact scholarworks@mso.umt.edu.

University Law Men Will Host Regional Moot Court Tourney

The MSU law school's moot court team will enter in competition with three other moot court teams here next weekend, according to Dean Robert Sullivan of the law school.

Teams from Willamette University at Salem, Ore., the University of Idaho at Moscow, the University of Washington at Seattle, and the MSU law school will meet here Nov. 14 and 15 for the Pacific Northwest regional moot court tourney.

The MSU team will consist of Charles Willey, Edward Borer and Charles Lovell. They were

Chute Club Plans Safety Measures

The Parachute Club, made up of associate and active members, met last night to discuss forming a safety committee. Roland Stoleson, president, said the need for the committee was twofold.

First, the associate members, those who have never jumped, will not be allowed to jump until measures have been taken to insure all possible safety. This would include training and enforcing the use of static lines for first jumps. (A static line automatically opens the chute as a man falls from the plane.)

Second, the committee would be responsible for the equipment used by all members. The main duty would be to insure that all chutes were packed by jumpers with experience in packing.

Stoleson said that the club is attempting to supply its members with equipment. Their most urgent needs are sleeping bags, parachutes, and snow shoes, he said.

Debaters Travel To Kalispell H. S.

Varsity Debaters will present a demonstration at Flathead County High School in Kalispell today.

They will debate the national high school proposition, "Resolved: That the United States should adopt the essential features of the British system of education."

Student speakers making the trip are Dick Josephson of Billings, Larry Pettit and Bill Huber of Lewistown and Duane Jackson of Butte. They will be accompanied by Dr. Ralph McGinnis, chairman of the speech department.

chosen at moot court competition in the law school during Homecoming last month.

Three Judges

Judges for the event will be James T. Harrison, chief justice of the Montana Supreme Court; W. D. Murray, Federal District Court judge; and Emmett Angland, president of the Montana Bar Assn.

The first round of competition will begin at 2 p.m., Nov. 14, in the Music Building auditorium. The second round is scheduled for 8 p.m. that night. The winners of the two rounds will meet at 10:30 a.m., Nov. 15, in the Music Building auditorium.

Winners will be announced at a buffet luncheon sponsored by the Montana Bar Assn., Nov. 15, at the University Law House.

The winning team will compete in the final rounds of the national competition in New York City, in December, where a justice of the United States Supreme Court will preside. Last year, the MSU team tied for first place with the University of Washington at the regional event and placed second in national competition.

Moot Court Explained

The moot court consists of students arguing a fictitious case before a panel of judges. The case is chosen by the Association of the Bar of New York City and is sent to every law school in the country planning to enter moot court competition. The fictitious case is usually based upon a case pending before the United States Supreme Court or on a current legal question which is not susceptible to an easy answer, Dean Sullivan said.

The moot court discussion for this year concerns an indictment against a corporation for violating the federal Anti-Corruption Act by contributing corporate funds toward a senatorial election campaign.

Calling U...

Budget and Finance, 4 p.m., Conference Room 3, Lodge.

Saddle Club ride, Sunday, 2:30 p.m.

Newman Club, Sunday, 6:30, St. Anthony Parish Hall.

Deseret Club, Sunday, 7 p.m., 915 Beckwith.

Canterbury Club, Sunday, 8:30 p.m., Holy Spirit Episcopal Church.

Dance Committee, Tuesday, 7 p.m., The Room.

Third Moon Shot Attempt Delayed Until Tomorrow

CAPE CANAVERAL, Fla. (UPI) — The Air Force worked under mounting tension today to prepare its third moon rocket for another launching attempt early Saturday.

Officials declined to elaborate on the "technical difficulties" that forced postponement of the first attempt at 10:34 p.m. (MST). The trouble could have been caused by any one of thousands of parts or by loss of contact with a tracking station.

The postponement—which came only 48 minutes before the scheduled firing time at 11:22 p.m., meant that the launch team would have to start almost from the beginning in the countdown checklist, a 94-page document that includes 1,100 items.

It also appeared that the Cape would lose its distinguished visitor of today, Queen Frederika of Greece, who displayed a keen interest in science during a visit to Chicago Thursday, was to watch the shot from a vantage point on the Cape.

But the Air Force said after the postponement that the Queen and her daughter, Princess Sophia, were scheduled to leave soon after dawn today.

Dwight Anderson, John Gesell Are Rhodes Candidates

Dwight Anderson and John Gesell have been chosen Rhodes Scholar candidates from MSU.

The two were chosen by a committee consisting of Leslie Fiedler, professor of English, Stephen Barnwell, associate professor of history and political science, Robert Burgess, chairman of the foreign language department, and Mark Jacobson, professor of physics.

Anderson and Gesell are now eligible to compete in state competition with two other candidates yet to be chosen. The two students representing Montana will be chosen from these four candidates in December.

The Montana representatives will participate at the northwest regional meeting in Spokane where six states are represented.

The four chosen at Spokane will receive the scholarship.

Anderson is a history and political science major from Ballantine and Gesell is a French and history major from Chinook.

Spurs' Sadie Hawkins Dance Tomorrow in Cascade Room

Daisy Maes and Lil' Abners will prevail at the Sadie Hawkins Dance tomorrow night in the Cascade Room of the Lodge. Hunting licenses (tickets) are \$1.50 per couple. The dance is sponsored by the Spurs.

Music will be by the Modernes from 9 p.m. to 12 p.m. The intermission will include numbers by the Sigma Nu Trio, Kappa Alpha Theta Kites and a vocal group composed of members from last year's Campus Capers and Kappa Keys.

The Sigma Nu Trio will do selections from the Kingston Trio album. The trio features Bill Rutan, banjo, Boyce Fowler, bass and Don Collins, guitar. Sharon Kansala, Paula Trenkmann, Byron and Calvin Christian and Bob Ruby will sing "Bus Stop."

The Kites are Willene Ambrose, Mary Bosely, Peggy Calvin, Myrna Kronmiller, Jurine Landoe and Jo Phillips. They will sing numbers from those of the Four Freshmen.

"Marrying Sam" will present marriage licenses and chicken (leg) rings at one of the booths. There will also be a booth for taking souvenir pictures. Sadies will have to furnish a small fee to bail out their dates from a jail in the center of the dance floor.

Prizes will be awarded to a boy and girl for the most original costumes. Judges will be chap-

erones Prof. and Mrs. Vedder M. Gilbert, Prof. and Mrs. Albert Stone and Prof. and Mrs. Deane Ferme.

The Spurs will give a breakfast Sunday at 8 a.m. in honor of the Bearpaws for their assistance with the dance.

Dutch Immigrant Exhibits Paintings

A group of 19th and 20th century Dutch paintings are on exhibit in the University Art Gallery, located on the first floor of the Fine Arts Bldg.

These paintings are part of the collection of Jack London, a recent Dutch immigrant. London has been in the U. S. for six months and is employed as a salesman for H. O. Bell Co. here.

He spent 35 years in Indonesia where he lost a collection of paintings and all his belongings when the Japanese invaded that country. London and his family were interned by the Japanese from 1942 to 1945.

The paintings featured in the exhibit include naturalist and realistic landscapes from Italy, Spain, Holland, and Indonesia. They were purchased by London in Holland and are all originals.

This exhibition will be on display through Nov. 30.

Montana Observes Birthday Nov. 8

Montana celebrates its 69th birthday tomorrow. It entered the union in 1889 as the 41st state.

Before this, Montana had been part of the Louisiana, Oregon, Dakota, Nebraska, Washington, Idaho, and Montana territories.

During the 25 years preceding statehood, Montana had a wild and woolly history. This was the era of the Indian wars, the battles of the copper kings, gold mining and Charlie Russell's cowboys.

The constitutional convention met in Helena in 1889 in what is now an apartment house. There they set up the state constitution, elected the first senators, and Joseph K. Toole became Montana's first governor.

Cosmopolitan Club Plans Annual Party and Dance

The Cosmopolitan Club will hold its all-University International Party Monday, Nov. 10, from 9 to 12 p.m. in The Room.

The Club has also decided to give a valuable door prize, to have several foreign amusement games, and to erect several booths.

Dancers will be invited to take part in the games, said Guiliana Brandazzi, social chairman. Admission to the dance is 50 cents per person and 75 cents per couple.

Recital to Feature Soprano, Pianist

The third in a series of music school faculty recitals will be presented Sunday at 8:15 p.m. in the music school Recital Hall, according to Luther Richman, Dean of the College of Fine Arts.

The program will feature Miss Patricia Barendsen, mezzo soprano, and William Richards, pianist. They will be assisted by Florence Reynolds, cello; Eugene Weigel, viola; Gordon Childs, violin; William Manning, clarinet; LeRoy McDonald, flute and Jerry Domer, Oboe.

This program will be open to the public without charge.

NO SCHOOL NEXT TUESDAY

No classes will be held Tuesday, Veterans Day. University offices will also be closed.

The 1957 state legislature declared Veterans' Day a legal school holiday in Montana.

Use of Channel 11 Threatens Educational TV

By JOHN HONEY

An economic battle between a television station, a cable company and a translator and jammer is raging over the air waves in Missoula.

The feud between KMSO-TV (Channel 13), Channel 11, and the Missoula Cable TV Company began to climax about two months ago. At that time Mills Folsom and Jim Barr, operators of Channel 11, set up a TV receiver and translator in the Rattlesnake Valley in an effort to pick up KXLF-TV (Channel 4) in Butte. (A translator is a transmitter that broadcasts TV signals on one frequency that it has received on another frequency.)

However, Channel 11 has been reserved by the Federal Communications Commission for non-commercial educational broadcasting. Also it is Channel 11 that MSU has been planning to use for educational broadcasting.

Dr. Erling S. Jorgensen, associate professor of journalism and director of the MSU Radio-Television Studies, said, "The operation of the translator on Channel 11 is illegal for two reasons. It is not operated by an educational organization, and it is not licensed by the FCC."

The FCC has allocated the Missoula area three TV channels.

These are Channels 13, licensed to KMSO-TV, Channel 8, which is vacant, and Channel 11, reserved for educational broadcasting.

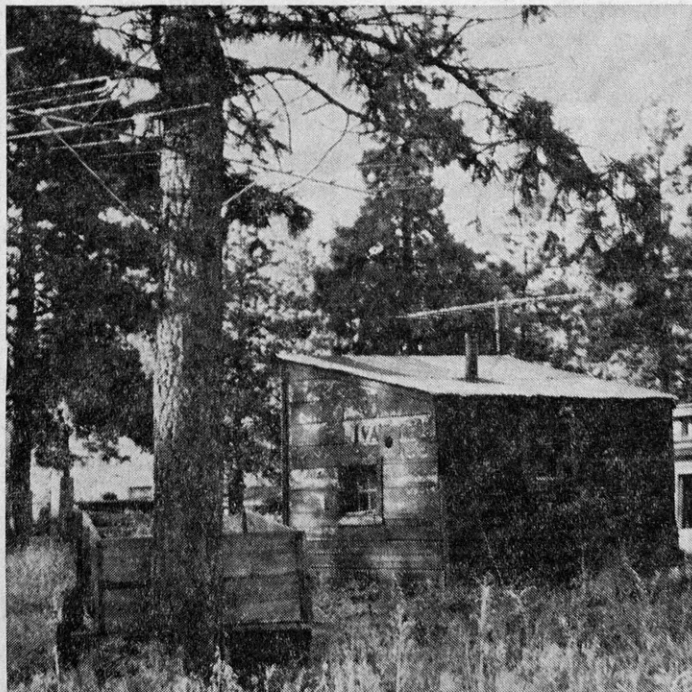
Shortly after Folsom and Barr set up their translator station and started sending pictures on Channel 11, a person who gave his name as Jack Bowers, and who is believed to be from Butte, leased a small chicken coop in the Rattlesnake Valley from a local realty firm.

Then a jammer started sending out signals that put a herringbone pattern on Channels 11 and 13. (A jammer is a transmitter that broadcasts interferences over radio and television waves. This interference can be either a noise or a repeating signal. In this case it was a repeating signal.)

The jamming was accomplished by setting up an antenna, a receiver and a transmitter in the chicken coop. The antenna picked up KMSO-TV (Channel 13) and transmitted the signal to Channel 4.

When the jammer was operating, the translator received two stations at once. Being unable to unmix the patterns, the translator sent out a combination of two programs on Channel 11, and interfered with the reception on Channel 13.

Folsom and Barr soon discov-



The building above is the chicken coop that housed the equipment used for jamming Channel 11 and KMSO-TV (Channel 13).

ered the chicken coop and jammer. Meanwhile, A. J. Mosby and MSU officials notified the FCC of the jamming difficulties and the fact that Channel 11 was being used for non-educational broadcasts. Mosby said he was especially interested in getting interference difficulties cleared up, and University officials wanted to clear Channel 11 of all commercial programs.

An FCC examiner soon arrived in Missoula and he and Mosby went to the chicken coop where he disconnected the wires of the jammer. According to Mosby this cleared up the reception of Channel 13 completely.

A few nights later burglars broke into the chicken coop and took an estimated \$800 worth of jamming equipment, investigating officials said.

Monday night burglars entered the small building that housed the electronic equipment of Channel 11 and took about \$1,000 worth of transmitting equipment, Folsom said.

"The University is not interested in the FCC's hesitation to act against the unlicensed translators," Jorgensen said. "We've been waiting for the participants in the controversy to change frequency as they promised after the University's complaint to the FCC."

Guest Editorial

What's Behind Investigation Of Athletic Spending?

(The Montana Kaimin prints as guest editorials articles which are of interest to the University community. Guest editorials do not necessarily represent the views of the Kaimin.)

By CLINT GRIMES

So some of the campus politicians and intellectual inebriates have discovered that MSU is losing football games. Hurrah for their perceptive powers. Some of the older members on campus find nothing uncommon about MSU losing games. But behold, these young gentlemen are going to find a solution to the problem in the area of student activity fees.

This group of public-spirited adolescents are conducting investigations, and polls of public opinion, to determine whether or not the student body is receiving maximum benefit from the expenditure of activity fees.

The results of the investigations are not yet public knowledge, but the results of the opinion poll are quite evident. One is that students do not feel that their representation in campus government is adequate, and another is that nobody but nobody loves a loser.

Some of these people intimate that greater benefit could be derived from supporting smaller athletic activities. Benefit to whom? Compare, if you will, the attendance at the Aquacade last month with the attendance at the MSU-BYU football game. You could not quick-freeze and pack into the MSU pool as many students as walk upright every game day into the stands at Dornblaser Field.

Attendance at tennis and ski team events has similar characteristics with one exception: in order to see the ski team in competition you would have to travel 140 miles to Big Mountain, the only ski area nearby with facilities for college competition. Benefit? Baloney.

The reason behind this crusade into the financial holy land of the athletic department is not some nebulous word like benefit or interest, but simply an inadequate football team. The problem is not where student activity fees go, but rather, why don't we win football games?

There is an answer to the problem of repeated losses by the team. It is, in the jargon of the athletic department, "Not enough horses." Logically the question is how do you obtain enough horses. The answer: an organized, effective recruiting service, and money. Montana State University has neither.

One of the reasons for this situation is the organization of University alumni (a University responsibility). Century Club is not well-organized in the northern and eastern part of the state. An example of this was expressed by the owner of a rather well-known night club in Billings. When asked after the Wyoming-Montana game by one of the many fans in his establishment if he were a member of Century Club, he replied that he had never heard of it.

This is not an isolated example. Century Club has a new representative this year whose competence is questionable, a fact the coaching staff is well aware of; but because of their subservience to that edifice of tenure, The Athletic Director, they can say nothing.

Another virgin area of support is Montana industry. Wyoming makes rather profitable use of the oil industry; the profitability is exhibited in the score sheet of the games they have played.

One may think that Montana industry would not cooperate; on the contrary, they responded rather handsomely to the Rodeo Club when asked.

Some Missoula businessmen support this school, but the number who benefit and the number who directly support the University are hardly in proportion.

No, the problem is not in the expenditure of student fees by the athletic department. The problem lies in organizing the students, the alumni, and the people of the state. It cannot be done with the existing staff nor with the techniques now being employed by the so-called "student representatives" or the administration.

MONTANA KAIMIN

Established 1898

Ted Hulbert..... Editor	Anne Thomas..... Business Manager
Vera Swanson..... News Editor	Bob Reagan..... Sports Editor
Toni Richardson..... Exchange Editor	Zena McGlashan..... Wire Editor
Karen Zander..... Women's Editor	Prof. E. B. Dugan..... Adviser

Published every Tuesday, Wednesday, Thursday and Friday of the school year by the Associated Students of Montana State University. The School of Journalism utilizes the Kaimin for practice courses, but assumes no responsibility and exercises no control over policy or content. ASMSU publications are responsible to Publications Board, a committee of Central Board. Represented for national advertising by National Advertising Service, New York, Chicago, Boston, Los Angeles, San Francisco. Entered as second-class matter at Missoula, Montana, under the Act of Congress, March 3, 1879. Subscription rate, \$3 per year.

Member of Rocky Mountain Intercollegiate Press Assn. and Montana State Press Assn.

Bob Amick

Manhood Threatened With Extinction

●● Manhood is slowly becoming extinct. Womanhood is rapidly becoming dominant. These are the words of a member of the faltering male sex.

Only in a few isolated primitive areas of the world does man still reign supreme and unchallenged. The United States has been the leader, as in most other lowly moves (such as the hula hoop), to wipe out male supremacy and males, if possible.

●● Women have progressed most rapidly since the 19th amendment was adopted in 1920. Allowing women to vote was probably the most crucial blow the American male has ever suffered. During World War II, women took over whole factories and industries. This, in itself, was not bad. But

by the time the war was over, women had gone mad with power. Since 1950, the United States has experienced two minor recessions. American men have been laboring for eight years under a deep depression of diaper changing, bed making and breakfast cooking.

●● This brings us to the present situation. What is the future of man? Will he, like the homing pigeon and the Dodo bird, be a victim of an unthinking society? Is man meant to perish as the Mayans and the lost continent Atlantis? This is a question that many biologists and dog lovers are asking today. According to one authority, George Borwell, president of the Mandabon Society, man will no longer even wipe dribbling noses by 1984 if drastic steps aren't taken.

What steps can be taken to counter the onslaught against man? According to Borwell, the solution is not complex. However, there would be "more than a little opposition to the solution."

●● Borwell has suggested the following courses: draft women into the armed services, then start a full-scale war. Borwell said this course might be a little too drastic, since the United States would lose the war.

Outlaw checking accounts and possession of money by women. The death penalty to all women who disobey this law.

Other suggested measures include abolishment of the sack dress and slacks, collective bargaining rights for men, and cremation of every third female child.

Borwell said if these actions are taken immediately, man has a 50-50 chance of surviving.

Replies to Letter From Nurses

To the Kaimin:

Re: Letter from Health Service nurses

I, for one, feel qualified to receive medication. However, on the morning of July 4, 1956, the switchboard was closed, the Health Center was closed, and I had an emergency appendectomy at St. Patrick's Hospital.

This would seem normal. However, the staff of the Health Center has not seen fit to drop me a plug nickel for that expensive week out of summer session. As a consequence, I stayed out of school for several quarters to pay for this.

I am convinced that the Health Center is only a repository for student dollars, some doctors and "The Nurses," and wouldn't have them stitch up a torn pair of trousers, let alone diagnose my streptococcus.

GARY JAMES WHITE

Come In And See The
New Shipment Of
Nebbishes At
Maughan's

Limited Supply Of
Nebbish Jewelry,
Cuff Links & Tie Bars
Hammond Arcade

Come In
And Try Our
**THICK
MILK SHAKES**

Special this week:
CAMEL FLAVOR

Hansens
FAMOUS
ICE CREAM

South of the bridge
on Higgins

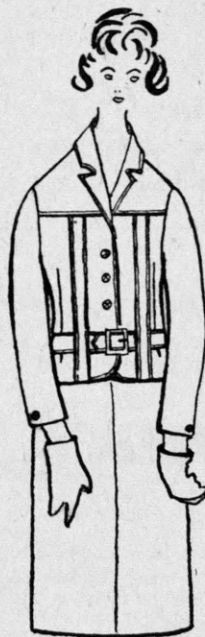
1957 Chevrolet Bel Air
4 door, like new inside and out

1956 Pontiac
4 door, radio, heater, hydromatic—very clean

BAKKE MOTOR CO.

345 West Front

British
Accent



Norfolk Suit in
Heather Tweed.
Coat may be worn as
separate jacket.

Outfit \$45.95

Kings
dress salon

Signed articles on this page do not necessarily represent the opinions of the Montana Kaimin. All letters should be kept brief, and should be in the Montana Kaimin office by 2 p.m. the day preceding publication. The editor reserves the right to edit all material submitted for publication.

ST Choice

Eddy's Bread
At Your Grocer

Associated
Students'
Store

Location Lodge Building
University & Arthur Ave.

Open Week Days 8:30 to 5 p.m.
Saturday, 9 a.m. to 2 p.m.

introducing
**Veiled
Radiance**
Elizabeth Arden's
newest foundation

in a new size!

500



The radiant
foundation
which is a
moisturizing
cream

make-up base.
Veiled Radiance glides on,
melts into your skin, erases
tiny blemishes—casts the
delicate glow of great
beauty on your face.

And now, by popular
demand, Elizabeth Arden
gives you Veiled Radiance
in a pretty pink and gold
plastic tube in seven
tender complexion tones.
Pink opaline jar, 10.00;
new pink and gold plastic
tube, 5.00. prices plus tax

Missoula Drug

WOMAN DRIVER

PUTNAM, Conn. (UPI)—When mechanic Hector Cote pointed out to a woman motorist that the reason that her car wasn't working properly was because the choke was pulled all the way out, she replied, "Oh, I thought that was to hang my pocketbook on."

ZOO PARADE

NEW YORK (UPI)—Police were not too surprised when they found an eight-foot porpoise hanging from a lamppost on a Bronx corner one night. Earlier in the day, they had come across a nine-foot shark with its teeth removed on a nearby corner.

Old Gridiron Rivals to Battle For Possession of Beer Mug

The Montana Grizzlies and the Idaho Vandals renew their keen rivalry tomorrow afternoon on Dornblaser Field. It will be a non-conference battle for the Little Brown Stein. Kick-off time is 1:30 p.m.

This will be the 41st meeting between the two clubs since 1903. In the 1903 game, Idaho won 28 to 0. Since then, the Vandals have won 29 games, the "Tips" 11. Last year Idaho won 31 to 13 at Moscow.

Coach Skip Stahley brings his Vandals to Missoula with a record of two wins and five losses: this included a 20-0 victory over the Utah Redskins. Montana lost to the Redskins 20-6 earlier in the season.

Big Man Out

"The boys are in fairly good shape for this game," Coach Ray Jenkins said. "Except for Bob Everson, who is suffering from previous injuries and will not suit up, there are no other serious injuries."

Two Idaho starters will miss Saturday's game. Ken Hall, star fullback and top Vandal ground gainer, is out with injuries, along with 220-poung guard Dale Hill.

The Grizzlies' line will have its hands full with the Vandals. The visitors' starting line averages 213 pounds per man.

Need Good Day

"We're hoping for a dry field and a warm day," Jenkins said. "A wet field would give the heavier Vandal team a decisive advantage because it's hard enough to stop a big man on a dry field; but when the field is wet, a big man can get set and it's much harder for the small player to move into a position to stop him."

However, this could be to Montana's advantage if the "Tips" send the halfbacks on end sweeps. This is because the heavier Idaho players could not move into position fast enough to stop the runners.

But a wet day would definitely hurt Montana's passing offense which is third in total yardage in the Skyline Conference.

Starters

The Grizzlies probable starting lineup will be John Lands and Pete Muri, ends; Charlie Moore and John Gregor, tackles; Stan Renning and Dale Sparber, guards; Jim Johnson, center; Phil Griffin, quarterback; Howard Johnson, fullback; Jerry Connors and Joe Pepe, halfbacks.

The Vandals starting lineup will be Jim Norton and Wade Patterson, ends; Jim Prestel and Pete Johnson, tackles; Tom DiNuobo and John Roussos, guards; Stan

Cheerio, Eh What?

ETON, England (UPI)—Famed Eton Public School has opened its own "pub" where boys over 16 can get a drink between or after classes.

It is believed to be the only licensed bar in any secondary school in the world.

Class Ads . . .

FOR SALE: Tux, like new, never worn. Size 38, \$35. 120A Craighead Apts. Phone 9-5245. 24c

FOR SALE: Big game ammunition at discount, call Phil Barbour at 6-6912 or 9-1211. 24p

MARY: I've already been asked. John

Hitting the Books Takes Lots of Energy

PERFECT STUDY TIME SNACK

- ☆ CIDER
- ☆ POTATO CHIPS
- ☆ FRESH FRUIT
- ☆ CANDY

at the . . .

University Grocery

"Just one block west of the Lodge."

Stereo Records

Latest Sound In All Prices at

Baker's Music Center
310 N. Higgins

YOUR LAST CHANCE to see the **SPOTTWOOD HOME**

910 Gerald


25¢ per person

Sat. Nov. 8—1-5 and 7-9
Sun. Nov. 9—1-5 and 7-9

Sponsored by KKG Alumni for benefit of Opportunity School

Bestbitt's

a soft drink made from *real* oranges



ZIP BEVERAGE CO.
Manufacturers and Jobbers

Introducing! The Most Glamorous Watchband Ever Created

Fashion Angle by **FLEX-LET**



SO CLEVERLY DESIGNED AND TILTED IT GIVES YOUR WATCH THE ELEGANCE OF BRACELET JEWELRY

FASHION ANGLE Style #236 1/20 10K yellow or white gold filled	995 F.T.I.	FASHION ANGLE Style #237 1/20 10K yellow or white gold filled	1095 F.T.I.
---	----------------------	---	-----------------------

EASY CREDIT TERMS

Stoverud's
Florence Hotel Building

Golf Links Closed Until Next Spring

The MSU golf course has been officially closed until next spring after a successful opening season. According to Carl Swanson, director of the pro shop, about 50 persons a day played the course this fall.

"We have plans to improve it and eventually expand it to 18 holes," course director Joe Boboth, Great Falls, said.

The course is rather barren, but sand traps and about 4000 trees are to be added next spring.

The MSU golf team will play all their home matches on the course next spring.

DRIVE A BETTER RUNNING CAR GET IT TUNED AND ADJUSTED HERE

For Dependable Service and Expert Repair . . . "Drop In At"

Shull Motor Service
515 W. Front Ph. 4-4350

FOREIGN STUDENTS

present an

International Party




- ☆ Dancing
- ☆ Entertainment
- ☆ Late Hours
- ☆ Records

Don Staggs at Piano - Organ
Single - 50c — Couples - 75c

The Room - - - 9-12 p.m.

Sponsored by Cosmopolitan Club

— Patronize Your Advertisers —

Compare This To \$29.95

A polished cotton Ivy fashioned mens' coat in the new shell finish. This varsity styled coat has a deep pile orlon lining, the popular heavy duty zipper, and is completely washable. This offer is for a limited time only so hurry!

\$12⁸⁸

WARDS
MONTGOMERY WARD

"Say You Saw It In The Kaimin"

- ★ Books and Supplies
- ★ Sporting Goods
- ★ Candy-Tobaccos
- ★ Toiletries
- ★ Pens-Gifts

All the supplies and equipment required or desired for your classroom work are available at your Student Store. Buy them there and be sure they are exactly what your prof recommends.

You're Sure It's Right

When It's Bought at the

Associated Students' Store

President Castle Elaborates On Chatland Research Post

Acting President Gordon B. Castle stated yesterday several reasons for the necessity and importance of a full-time bureau of institutional research now headed by Academic Vice President Harold Chatland.

Dr. Castle pointed out that the entire University enrollment has increased 43 per cent. The total of first quarter freshmen alone has increased 35 per cent over last year, he said. "This creates a problem of classroom and dormitory space as well as size of staff."

"We need an analysis of classroom space, the way in which it is used, and how the use could be increased to meet present demands."

A detailed space survey is necessary giving the number of hours a day a classroom is used, the number of days a week it is used, and the per cent of occupancy each hour, Castle said.

Lengthy Process

If the University started today to plan a building going through the necessary procedure of obtaining finances through bonds and other measures it could not possibly be completed before the fall of 1960.

"We need this detailed analysis of physical plant conditions and accurate data on the workings of the entire University in order to make the best possible use of present facilities until plans and funds for new buildings can be obtained," he said.

The dormitories have a 92 per cent capacity load at present and with the normal return from this freshman class of 1,254, there will be an increased need for upper-

class housing in the immediate future.

We need accurate data so we can project our needs and then find ways and means of financing a solution, he said.

"If a dormitory were built to lodge 250 students it would have to be filled to 80 per cent capacity to pay off the indebtedness and operate it."

Dr. Castle said that the University needs to evaluate its present facilities, then look at the expected annual increase in enrollment. "If we can afford additional class rooms and dormitories we need to consider the heating plant. Can we carry these enlargements in physical structure with the present system of heat, power, and water? When one part of the University system is increased in capacity the others are automatically affected."

Important Post

Castle said that because parts of the University are so interrelated the position of director of institutional research is of extreme importance.

"Because of his knowledge of the University and its operation and his mathematical background, I'm confident Dr. Chatland will do an excellent job as institutional research director," Castle said.

Dr. Chatland was appointed to the directorship Oct. 20 and is also continuing as academic vice president of the University. He will work with Dr. Joseph Hashisaki in compiling the detailed analysis of present University facilities and conditions.

Problems in Humanities Will Be Discussed Today

Robert Hoopes, vice president of the American Council of Learned Societies, is on campus today to discuss the needs and problems of scholars in the humanities.

An informal luncheon, honoring Hoopes, will be held at noon in Territorial Room 1 in the Lodge. He will meet with faculty members at 4 p.m. in LA 104 for an informal discussion.



—Photo by Don Dehon

The Spottswood Mansion, 910 Gerald Ave., will be open to the public Saturday and Sunday at a cost of 25 cents per person. All proceeds will go to the Opportunity School, local rehabilitation institution for retarded children.

Students Invited to Swim Time Trials

Students who have voiced backing of MSU's swimmers will have a chance to prove their support today.

The team is holding time trials at 4:15 p.m. in the pool, and Coach

Bud Wallace yesterday invited all interested students to attend.

Distances will be up to 100 yards. "Having people watch sometimes picks up a team," Coach Wallace said.

News Names

Compiled from UPI Wires

Premier Charles de Gaulle presented Sir Winston Churchill with France's highest award, the Cross of Companion of the Liberation, yesterday in a ceremony that officially ended one of the most publicized feuds of the century.

Charles Starkweather testified yesterday that Caril Fugate did not help him murder Robert Jensen but added that he had no interest in the outcome of Caril's trial. "I don't care what they do to Caril Fugate," he said.

On being the first Negro to be elected to public office in Houston, Mrs. Charles E. White said, "Gov. Orval Faubus and Little Rock have shown the people of Houston that violence and strife are not the means of working out this integration problem."

On a TV show Oscar Levant noted the difference between Democrats and Republicans. "The Democrats give the poor a chance to become corrupt."

SPECIALIZED SERVICE

- ☆ Motor Tuneup
- ☆ Carburetors
- ☆ Speedometers
- ☆ Magnetos
- ☆ Starters
- ☆ Generators
- ☆ Ignition

AUTO ELECTRIC SERVICE

218 East Main—Phone 4-4716

FOR RESULTS—

Use the Kaimin



Coming Soon

Montana Masquers in

Anne Frank Diary Of A Young Girl University Theater

Nov. 13, 14, 15

Season Tickets \$1 With Activity Card

Tickets may be obtained in the Masquer Box Office, University Theater Lobby, 3-5 p.m. every day.

"CHECK" THE FLOW OF YOUR HARD-EARNED DOUGH —

Think...



OPEN A CHECKING ACCOUNT NOW Mem. Fed. Dep. Ins. Corp.

HOME FOLKS SINCE 1873

Starts SATURDAY —at the—



One Of The Best Pictures You Will See This Year!



THE BIG WAR THEY FOUGHT! THE BIG LOVES THEY FOUND!

The one truly big story of the U. S. Marines in love and war!

20th Century-Fox presents JERRY WALD'S production of

IN LOVE

AND WAR

Starring ROBERT WAGNER DANA WYNTER JEFFREY HUNTER HOPE LANGE BRADFORD DILLMAN SHEREE NORTH FRANCE NUYEN



COLOR by DE LUXE CINEMASCOPE

Directed by PHILIP DUNNE • Screenplay by EDWARD ANHALT • Based on a Novel by Anton Myrer

Public May Tour Spottswood Home

The E. W. Spottswood Mansion, located at 910 Gerald Ave., will be open for public tours Saturday and Sunday from 1 p.m. to 5 p.m. and 7 p.m. to 9 p.m.

Kappa Kappa Gamma Alumnae of Missoula will sponsor the open house. Admission is 25 cents and proceeds will go to the Opportunity School.

The mansion was built by Mr. and Mrs. E. L. Bonner in 1891. At that time only a few houses had been built on Missoula's south side.

Mrs. Bonner founded the Bonner Scholarship, awarded to a freshman every four years. Many University students were entertained at the mansion.

The Bonner's daughter married E. W. Spottswood, chief physician of the Northern Pacific Hospital in Missoula. They built the house which now belongs to the Sigma Nu's. Their son, Edward, and daughter, Lenita, are graduates of MSU.

Several hundred books have been donated to the MSU Library and furniture and art pieces, some from abroad, have been given to the art department and museum.

The Great Submarine Picture!

MGM PRESENTS GLENN FORD ERNEST BORGNINE

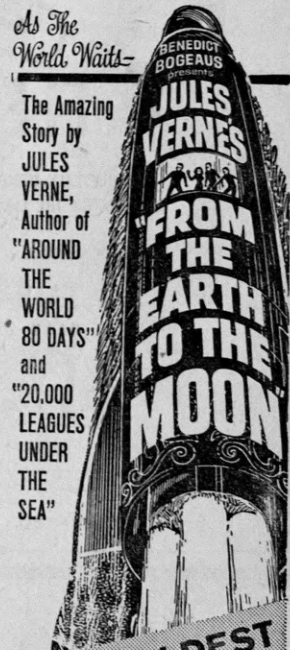


Sun. - WILMA

Now Playing

As The World Waits—

The Amazing Story by JULES VERNE, Author of "AROUND THE WORLD IN 80 DAYS" and "20,000 LEAGUES UNDER THE SEA"



THE BOLDEST ADVENTURE EVER DARED BY MAN!



TECHNICOLOR SHARING JOSEPH COTTEN GEORGE SANDERS DEBRA PAGET DON DUBBINS

FRIDAY TIME SCHEDULE Moon—6:15-8:20-10:25 SATURDAY TIME SCHEDULE Moon—12:00-2:05-4:10-6:15-8:20-10:25

Wilma THE SHOW PLACE OF MONTANA