

University of Montana

ScholarWorks at University of Montana

Montana Kaimin, 1898-present

Associated Students of the University of
Montana (ASUM)

9-27-1961

Montana Kaimin, September 27, 1961

Associated Students of Montana State University

Follow this and additional works at: <https://scholarworks.umt.edu/studentnewspaper>

Let us know how access to this document benefits you.

Recommended Citation

Associated Students of Montana State University, "Montana Kaimin, September 27, 1961" (1961).

Montana Kaimin, 1898-present. 3730.

<https://scholarworks.umt.edu/studentnewspaper/3730>

This Newspaper is brought to you for free and open access by the Associated Students of the University of Montana (ASUM) at ScholarWorks at University of Montana. It has been accepted for inclusion in Montana Kaimin, 1898-present by an authorized administrator of ScholarWorks at University of Montana. For more information, please contact scholarworks@mso.umt.edu.

Montana Kaimin

Montana State University
Missoula, Montana

AN INDEPENDENT DAILY NEWSPAPER

64th Year of Publication, No. 1
Wednesday, September 27, 1961

Newman House Controversy Still Unsettled

The Missoula City Zoning Board had ruled that the use of the Newman House as residence for Catholic University men is illegal.

Acting on a complaint from residents in the area the board ruled the use of the building for multiple dwelling is a "clear violation of Class A zoning regulations." The house at 1325 Gerald Ave. is outside the multiple dwelling area which ends at University Avenue going south.

In contrast to the ruling by Head, District Judge E. Gardner Brownlee refused to issue a temporary restraining order to prevent the Newman group from using the building. The refusal came Sept. 12. Thus, as it presently stands, there has been a ruling by the city zoning board to the effect that occupancy of the dwelling by the Newman Club is illegal, however the court has refused to issue the necessary restrainer to back the complaint.

Built as a home in 1928 by N. J. Lennes, a mathematics professor at MSU, the 16-room structure cost \$100,000 and was not completed until 1932.

The house was purchased by Dr. Stephen N. Preston of Missoula in 1954 after the death of Mr. Lennes. Mr. Preston sold the house two years later to the University because of high taxes on the property. The house was then converted into a residence for law students.

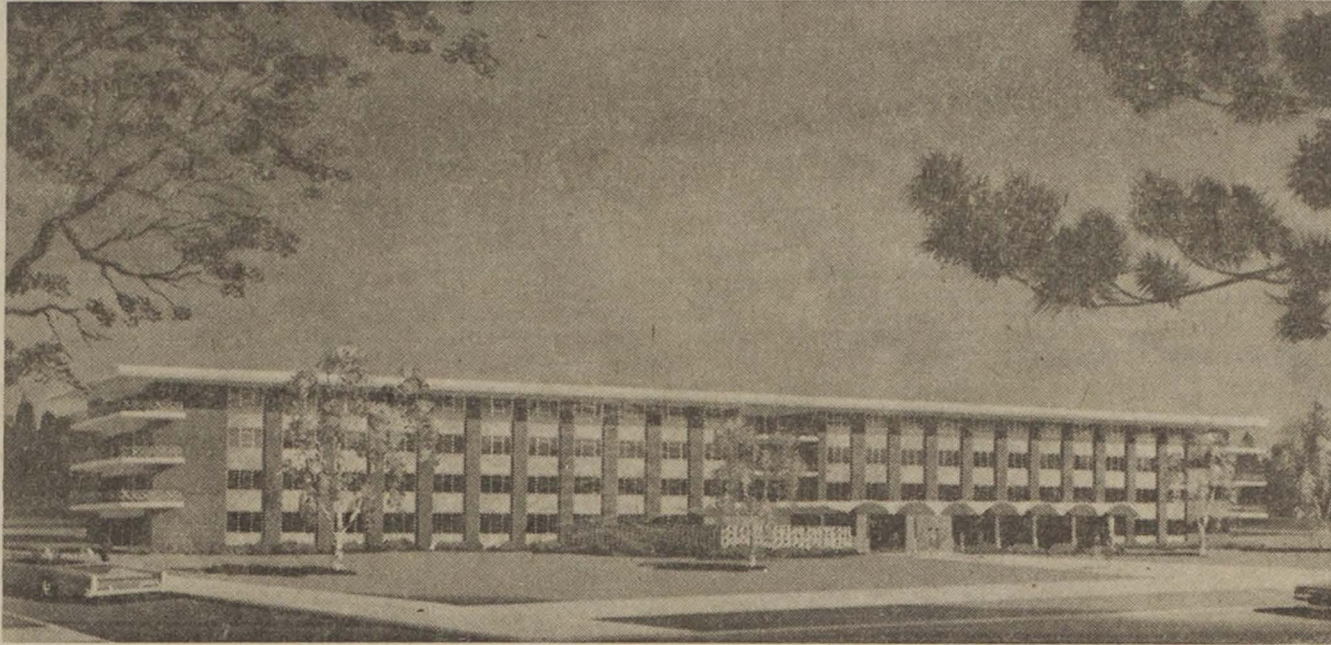
Mr. Preston has described the house as probably the finest built in the city. "It is authentic Italian Renaissance in style and architecturally perfect in every detail."

Features of the house include a library which has a capacity of 20,000 volumes. The house also has six baths which are finished in Holland tile. The fire place is authentic Italian Renaissance in design.

WEATHER

MISSOULA AREA: Partial cloudiness today with possible showers. Considerable cloudiness tomorrow with scattered showers and little change in temperature, 50-55. Yesterday's high was 58.

Old Man Winter, Stay Away from Our Door



NEW WOMEN'S DORMITORY—Sept. 18 marked the beginning of construction by a Missoula firm of the \$1,100,000 MSU women's dormitory. When

the dorm is completed, it will house 267. The completion date, September 1962, is subject to a bad winter.

Floats, Parade and a New Queen

Wednesday Noise Parade Will Start '61 Homecoming

By **PRINTER BOWLER**

Here we go again! Drag out the floats and noisemakers, put on your dancing shoes, bring your banner (and maybe the Victory Bell). It's Homecoming time at Montana State University.

Festivities will start with a bang as students organize tonight for the annual noise parade. The parade will consist of all kinds of vehicles which will begin the tour at 5:15 p.m. from the corner of Gerald and Eddy streets. The celebrants will go up University Ave. to the baby oval and return by the same route.

Schedule of Events

According to Eric Myhre, Homecoming chairman, Traditions Board will sponsor a torch parade beginning at 6:15 p.m. Friday. This will be followed by Singing on the Steps of Main Hall after which Gov. Donald G. Nutter will speak.

Prof. Oakland of the music department will traditionally conduct the singing again this year.

Immediately following the SOS,

a convocation will be held for alumni at the University Theater.

Homecoming Parade

The Homecoming parade will start from the NP Depot at the north end of Higgins Avenue. All fraternities, sororities and other organizations will enter floats conducive to the theme, "Day by Day at MSU."

The parade will begin promptly at 10 a.m. Saturday, and all entrants are advised to have their floats ready at 9:30 a.m.

From Higgins Avenue the parade will go to Dornblaser Field where the MSU Grizzlies will meet the New Mexico Lobos at 1:30 p.m. Last year MSU won the Homecoming game from the University of Idaho, 18-14.

Following the game the fraternities and sororities will hold open house for alumni and visitors.

Homecoming celebration will end with a dance in the Cascade Room of the Lodge. Claude Myhre and his seven-piece band from

Spokane have been hired for music and entertainment.

Queen Candidates

Six candidates will compete for Homecoming Queen of 1961. They are Barbara Boorman, Mary Garrison, Judy Lito, Marith McGinnis, Marcia Meagher and Virginia Swanson.

Terry Stephenson, Homecoming Queen of 1960, will crown her successor at the football game Saturday. Mr. Dan Lambros, vice-president of Missoula Alumni, will present the new queen with the traditional bouquet of red roses.

Tonight the queen candidates will appear on KMSO-TV at 6:45 for personal interviews.

Central Board Agenda

Reports:
Freshman Camp
Traditions Board
Public Relations
Student Union
Election Committee

Delta Gamma, Theta Chi High In Grade Points

Theta Chi and Delta Gamma lead the men's and women's living groups in grade indices for spring quarter, 1961, according to the Dean of Students indices listings.

Theta Chi carried the most credits with an average credit load of 15.2 in the men's living groups while Delta Delta Delta carried the biggest average credit load in the women's living groups with 15.603.

Men

Theta Chi	2.585
Sigma Alpha Epsilon	2.570
All University	2.519
Elrod Hall	2.492
Non Fraternity Men	2.471
Sigma Phi Epsilon	2.471
Alpha Tau Omega	2.460
All University Men	2.457
All Fraternity Men	2.408
Sigma Nu	2.372
Delta Sigma Phi	2.358
Phi Delta Theta	2.331
Sigma Chi	2.254
Craig Hall	2.251
Phi Sigma Kappa	2.209

Women

Delta Gamma	3.027
Synadelphic	2.909
Delta Delta Delta	2.759
All Sorority Women	2.711
Kappa Kappa Gamma	2.695
Kappa Alpha Theta	2.661
All University Women	2.646
Turner Hall	2.640
Non Sorority Women	2.603
Alpha Phi	2.581
All University	2.519
North Corbin Hall	2.516
Brantly Hall	2.473
Sigma Kappa	2.448
Corbin Hall	2.445

Works of Cascade Artists Now Displayed in Lodge

An exhibition of original works by the Cascade Artists is on display in the Yellowstone Room of the Lodge.

The Cascade Artists have shown their works extensively in the Northwest.

The artist's techniques and styles vary ranging from the abstract to realism. Nine artists are exhibiting works.

The exhibit is sponsored by the Student Union Arts and Craft Committee.

Sigma Kappa Leads Rush

In sorority rush the Greeks gained 140 neophytes. Sigma Kappa pledged the most with 29 followed by Kappa Alpha Theta which pledged 28.

Rush began Wednesday and ended Monday night. Two hundred sixty one women registered to go through rush.

Women pledged by sororities are:

SIGMA KAPPA

Shirley Anzjon, Butte; Susan Barkley, Deer Lodge; Peggy Jean Bell, Joliet; Ann Bradbury, Seattle, Wash.; Paula Brinkman, Dagmar;

Susanne Burns, Hardin; Sharon Cadwell, Missoula; Donna Dringman, Hardin; Carole Eley, Great Falls; Nancy Ferguson, Great Falls; Barbara Francisco, Conrad; Fay Gonsior, Milltown; Elizabeth Grosfield, Big Timber; Sharon Hinckley, Power; Joan Irwin, Great Falls; Linda Jenkins, Missoula; Stephanie Johnson, Hardin; Roberta Kerr, Kalispell; Elizabeth Loeffler, Missoula; Pearl McGinnis, Missoula; Sharon Maddox, Helena; Helen March, Great Falls; Janet Monk, Marion; Diane M. Pappas, Opportunity, Wash.; Caroline Piquette, Missoula; Faye Quirk, Eureka; Janet Ritschel, Anaconda; Bonnie Jo Robbins; Great Falls; Nyla Thielman, Great Falls.

ALPHA PHI

Vicki Sue Bernard, Great Falls; Vicky Burkhart, Billings; Diane Cox, Missoula; Retta Greenup, Shelby; Colleen Henry, Missoula; Dorothea Hirst, Missoula; Beverly Irwin, Kalispell; Nancy Jones, Billings; Patricia Jones, Billings; Sara Kind, Helena; Joye Robin King, Cut Bank; Denise Morgan, Missoula; Paula Morse, Great Falls; Carolyn Patterson, Sanders; Nikki Paulsrud, Kalispell; Pa-

tricia Scott, Mobridge; Beverly Simpson, Mandan, N.D.; Nancy Thorson, Joplin; Amie Urbanske, Arlington, Va.; Dorothy Van Blaricom, Hamilton; Kitty Van Vliet, Edmonton, Alta.

DELTA DELTA DELTA

Sharon Aronen, Helena; Bertha Clendinning, Madison, N.J.; Judith Graybeal, Glasgow; Sharon Grefig, Butte; Mary Jo Halm, Anchorage, Alaska; Julie Hammer, Stanford; Carolyn Hartley, Richland, Wash.; Arlene Heitzman, Hardin; Patricia Jestrab, Havre; Carol Larimer, Glendive; Susan Mahrt, Missoula;

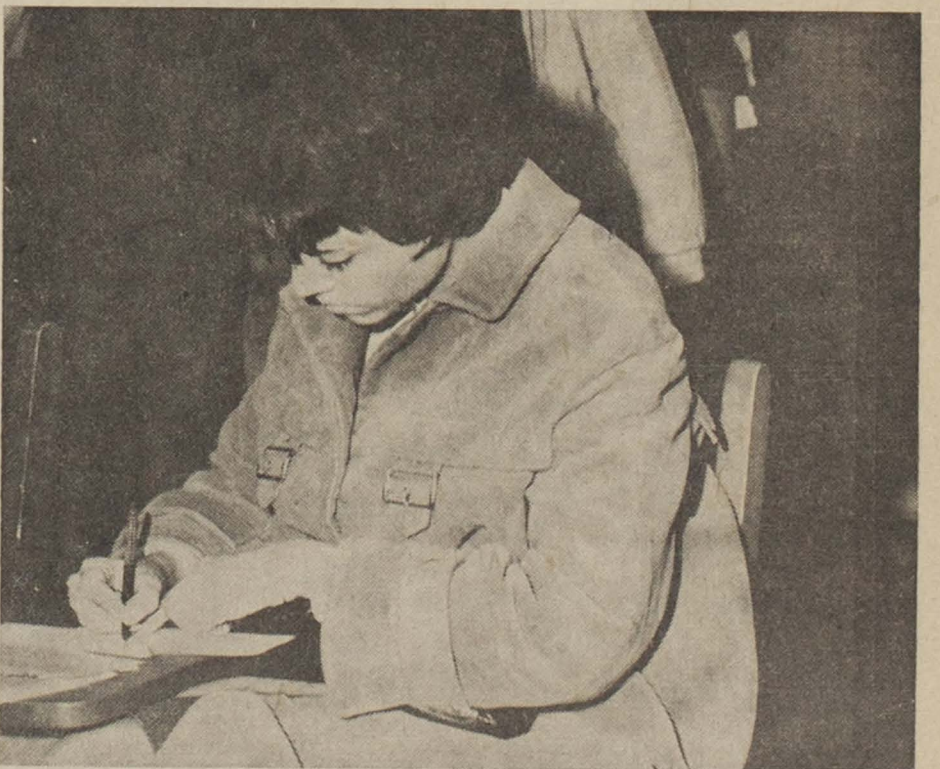
(Continued on Page Four)

TV Production Meeting Tonight

A meeting will be held in the Journalism Auditorium at 4 p.m. for all students interested in participating in TV productions, regardless of major, according to E. S. Jorgensen, director of radio-TV studios.

The productions will include KMSO-TV, cable TV throughout the state, and educational TV for Missoula Public Schools, Dr. Jorgensen added.

Name, Rank, Serial Number



WRITING COURSE—One of the unscheduled courses in writing was taken by English major, Sandra Pears of Wallace, Idaho, as she and many other practiced penmanship during registration last Thursday and Friday. (Kaimin Photo by A. P. Madison).

Calling U . . .

Bearpaws, 7:15 p.m., Lodge.
Central Board, 7 p.m., Silverbow Room.

Budget and Finance Committee, 4 p.m., Committee Room 2

Montana Masquers, noon, Territorial Room. Freshmen welcome.

Newman Club, 5 p.m., Conference Room 1. Rosary through Friday.

Kams and Dreggs, 7:30 p.m., Yellowstone Room.

Cosmopolitan Club, 9 p.m., Committee Room 3.

MONTANA KAIMIN

—ESTABLISHED 1898—

Frank Walsh editor
 Marie Stephenson . bus. mgr.
 Judy Rollins . . . news editor
 Tom Flaherty . . . sports editor



Jerry Holiday assoc. editor
 Printer Bowler assoc. editor
 Sam Donaldson assoc. editor

Prof. E. B. Dugan adviser

Published every Tuesday, Wednesday, Thursday and Friday of the school year by the Associated Students of Montana State University. The School of Journalism utilizes the Kaimin for practice courses, but assumes no responsibility and exercises no control over policy or content. ASMSU publications are responsible to Publications Board, a committee of Central Board. Represented for national advertising by National Advertising Service, New York, Chicago, Boston, Los Angeles, San Francisco. Entered as second-class matter at Missoula Montana. Subscription rate, \$3 per year.



The Kaimin and You

During orientation week more than 200 freshmen visited the Kaimin offices on their campus tours. Some explanation was made at this time as to the operation of the student newspaper and of its historical background. However, the Kaimin would like to take this time to review for the upperclassmen and to give the freshmen some idea of what can be expected of the Kaimin, and also what the Kaimin expects of the students.

Because the Kaimin has meaning only in what it means to MSU, its meaning is directly proportionate to its news coverage of MSU. This news coverage will consist of campus, city, state, national and international events that are of interest to the students.

The Kaimin staff, possibly more than most others, realizes that it cannot cover all the events that the students would like it to cover. For this reason groups or organizations that wish a reporter at meetings should notify the Kaimin news editor at least one day prior to the day of the meeting. Persons acting as reporters for groups or organizations must have their typewritten stories at the Kaimin office by 3 p.m. the day before it is to appear in the Kaimin.

The editorial column will try to interpret news, stimulate thought, and act as a leader. The Kaimin will try to do this by offering its opinion for consideration by its readers. The Kaimin editorial column does not, nor will it try, to represent the views of the whole student body or any other group. Because student opinion is important to the Kaimin and the student body, students not connected with the Kaimin may write columns if they so desire. These columns may be contrary to Kaimin editorials and may cover almost any subject.

Letters to the Kaimin on any subject of interest to the students are solicited. Letters must be signed with the writer's usual signature, not with a typewriter, or they will not appear. Letters of less than 200 words will appear as written, corrected only for grammar. Letters of more than 200 words will be edited at the discretion of the Kaimin staff. The Kaimin reserves final judgment on timeliness and content of letters as well as space limitations to determine on what day the letter will appear.

Students are always welcome at the Kaimin offices. Any suggestions that you may have for improving the Kaimin will always be seriously considered. It is hoped that you will enjoy the Kaimin this year.

LITTLE MAN ON CAMPUS

By Dick Bibler



"HE WANTS TO KNOW MOZART WROTE ANYTHING FOR STRING TRIO AND BONGO DRUMS."

Baseball Hero Measured in Terms of Dollars and Cents

Roger Maris' 59 home runs, though plentiful, go into this year's record books as another fruitless attempt to match or surpass Babe Ruth's record of 60 in 1927.

However, the principle of this article is not the aftermath of a tense and torrid homerun derby, but rather the principal plus interest and residuals of Roger Maris.

On a night in Los Angeles recently, Roger was quite frank about his cash and carry attitude toward life in general and baseball in particular:

Reporter: Would you let your son accept a bonus to play baseball?

Maris: How much bonus?

Reporter: How about \$40,000?

Maris: He'd take it.

Reporter: And miss college?

Maris: The hell with college!

"... with the highest degree they got, how much could he make? With the bonus he can buy into a business. I didn't go to college because I wasn't interested in college."

They claimed that the attempt to equate a \$40,000 bonus with a

college education appears extremely ridiculous. For the record, I don't calculate the value of a college education in dollar signs and decimal points. I would like my children to go to college, thought I cannot hit home runs and may have to cheat at gin rummy to get them there.

The \$40,000 figure was arbitrary, but not completely. Maris said, "How much bonus?" Had the reporter suggested \$100,000 Maris would have classified the query as another stupid question.

Roger Maris cannot be set down statistically as a one dimensional robot with a number nine on his back. The fact that Maris hit 59 legitimate home runs in 1961 will not help the archeologists of 2961 to understand our culture, but why he did it and what he thought while doing it, would be a revealing clue.

It is also a world that Roger did not make. He did not twist a single arm of the 171,503 persons who paid to see the Yankees play Detroit in New York several weeks ago. If he is the cause of their

inexplicable enthusiasm, he is also a product of them. His frank intention—to parlay an uppercut swing that would irk a high school coach into a medium sized fortune—seems a higher level concept than the daily expense account being perpetrated by many of our college graduates.

Baseball the business, Roger Maris, the businessman, are symptoms of our time. I would like posterity to know about them. The archeologists of 2961 won't be of much help.

William J. Koan

Like Wearing a
 Brand New Shirt
 Every Morning



Men prefer our laundering because we do a complete job on each shirt. On receiving your shirt we wash it gently but thoroughly . . . mend it . . . sew on any missing buttons . . . and iron it expertly. Try our service this week and you'll notice the improvement!

SPARKLE

Laundry-Cleaners
 LAUNDROMAT

10% Cash & Carry
 Discount
 On Dry Cleaning

OPEN

8 a.m. to 7 p.m., Mon. thru Fri.
 8 a.m. to 6 p.m. Sat.

Joyce Stecher School of Ballet

Instruction in all grade levels of
 Classical and Character Ballet

(Special Classes for Adults)

Telephone LI 9-3656 for Information

Back-to-School Special

FRIDAY—SATURDAY—SUNDAY

Sept. 29—Oct. 1

OUR BIG, LUSCIOUS

BANANA SPLIT

ONLY 25¢

with this coupon
 (regular 45¢)

at the

DAIRY QUEEN

Higgins & Strand

Announcing . . .

Kay's

515 University

Ladies Ready-to-Wear

The Newest and Latest in Exclusive Fashions

SPORTS WEAR

SKIRTS

BLOUSES

BETTER DRESSES

Imported

SWEATERS

Exclusive From

Hong Kong

England

Mexico

Hand Knit

Italy

Hand Knit

9 a.m. to 5 p.m. Monday through Saturday
 Evenings by Appointment

515 University

2-2634

Injury-Laden Grizzly Squad Face Lobos for Homecoming

With a Homecoming game scheduled for this weekend against the New Mexico Lobos, football coach Ray Jenkins has the task of fielding 11 men who are not on the injured list.

After last week's 54-6 loss to Utah State, 14 players were on the training table.

They included Jack Rudio, Larry Beddes, Dan Peters, Carl and Gary Schwertfeger, Tom Hauck, Eugene Moe, Terry Dillon, Glenn Sorenson, Gary Smith, Bob O'Billovich, Pat Dodson, Steve Wood and John Schulz.

Carl Schwertfeger, Peters, Smith, and Wood did not make the trip because of injuries suffered in the Wyoming game and on the practice field. Wood will be out of action for three weeks.

There were eight new starters in last week's game against Utah State, and it appears there will be a few changes against this week against the Lobos. Coach Jenkins has listed as tentative starters Dick Huse and Bill Bouchee at ends, Jack Rudio and Jim Bartell at guards, Ed Herber and Dave Kosiur at tackles, Bob O'Billovich

at quarterback, Terry Dillon and Pat Dodson at the halfback slots, and Ron Werba at fullback. "The center position is still uncertain," Jenkins said.

The Grizzlies' opponents for Homecoming, the New Mexico Lobos defeated New Mexico State 41-7 last week snapping the longest college football winning streak in the nation at 16.

Jenkins said that New Mexico is of the same caliber as Utah State and Wyoming with good depth. Quarterback Jim Cromartie ranks as the finest wing-T man in the conference, Jenkins said, and that halfback Bobby Santiago is a fine runner who last year led the Lobos in yards gained.

"It is unfortunate that our schedule is such that three of the four toughest games are first," Jenkins said. However, he said that with the Homecoming spirit and the MSU students in the stands, it should help.

Team Rosters for Touch-Football Required Today

Rosters for the Men's Intramural Touch Football League must be turned in today at the Men's Gymnasium, according to Ed Chinske, intramural director.

An intramural managers' meeting is slated tonight at 7 p.m. in the Men's Gymnasium, Chinske added.

Foreign Students Registration Ends

All alien students who did not register with the Foreign Student Adviser, Dr. Vedder Gilbert, in the Field House last Thursday and Friday must do so before 4 p.m., Saturday.

Foreign students, Canadians included, may complete their registration by appearing in Liberal Arts Building, Room 151, between 10 a.m. and 4 p.m. any day this week.

Locker Room Chatter

By TOM FLAHERTY

Although most MSU sports fans are acquainted with statistics concerning the Grizzly football team, a little could be said about the men behind the team.

Head coach Ray Jenkins began his fourth year at MSU this fall. A graduate of Colorado University in 1942, the Grizzly mentor is still remembered as a bruising fullback for the Buffaloes.

After serving in the Navy in World War II, Jenkins coached for two years at Colorado School of Mines, then returned to the Colorado campus as freshman coach and later was promoted to end coach.

Known as "the little professor," backfield coach Hugh Davidson also has a Colorado background. Davidson played fullback for the Buffaloes from 1949-1951.

Before becoming Jenkins' first assistant in 1958, Davidson spent two years coaching high school football in Osburn, Kan., and coached freshman football at Colorado for four years.

Milton Schwenk served as head coach at Wenatchee Junior College before taking over the duties of Grizzly line coach last fall.

Schwenk was graduated from Washington State College in 1954 and starred on the Cougar line during his undergraduate years. After graduation, he served as line and head coach at Hamilton Air Force Base in California until accepting the post as head mentor at Wenatchee.

Schwenk will coach the Grizzly baseball team this spring. Returning to the Montana football scene after a six-year absence is freshman coach Ed Chinske.

A former gridiron star, Chinske is a 1930 graduate of the University. He served as head football coach at MSU from 1952-1954.

One of the most important men behind the Grizzly football scene is trainer Naseby Rhinehart. Now in his 27th year as head trainer, the genial trainer starred in three sports at MSU in the mid-30s and is still recognized as an all-time great on the gridiron.

Rhinehart took over the training facilities in 1935 and had little more than a bottle of liniment at his disposal. In his 26 years of patching up MSU athletes, Rhinehart has built one of the finest training rooms in the west.

Parachutters Went Overboard At Jaycee Air Fair in Billings

MSU's Parachute Club was featured as co-attractions with the Blue Angels, Navy precision aerobatic flying team, at the Billings' Jaycee Air Fair Sunday. Representing the club in the

show were Paul Tag, president; Bill Bivin, vice president; Chuck Underwood, safety officer; Jim Peterson and Pete Harkness.

The club did 45-second delayed jumps in which each jumper, holding a smoke bomb, fell 45 seconds before opening his chute.

A crowd of 15,000 watched. Featured speaker at the program was Frank Hemmingway, ABC news commentator.

Students, Faculty To Talk to USIA Personnel Head

The Director of Personnel for the United States Information Agency, W. H. Weathersby, will visit the campus Wednesday, Oct. 4.

Weathersby will confer with chairmen and interested faculty members of the Departments of Foreign Languages, History, Political Science, School of Journalism, and School of Business Administration. He will speak to classes as arranged by the chairmen and deans of these departments and schools about careers in the USIA.

Keglers Meet Tomorrow

The men's varsity bowling team will meet tomorrow at 4 p.m. in the Women's Center, according to Vincent Wilson, faculty advisor.

He invited interested undergraduate students averaging at least 170 to attend the meeting.

For the first time students may participate for one credit of physical education 101-201.

Meade, Childs, Nash Among Nine to Lecture

The MSU Public Exercises and Visiting Lecturers Committee has assembled nine varied and widely-known personalities to speak during the 1961-62 school year:

Bruno Bettelheim, Sonya Shankman Orthogenic Center, Chicago, "The Disturbed Child," Oct. 24.

John H. Franklin, specialist in Negro history, Brooklyn College, Nov. 7.

Julian Hartt, Yale Divinity School, Dec. 1.

Peter Rossi, National Opinion Research Center, Jan. 15.

Ogden Nash, noted author, Feb. 6.

Margaret Meade, noted anthropologist, sociologist, March 29.

Barry Goldwater, U. S. Senator from Arizona, March 29.

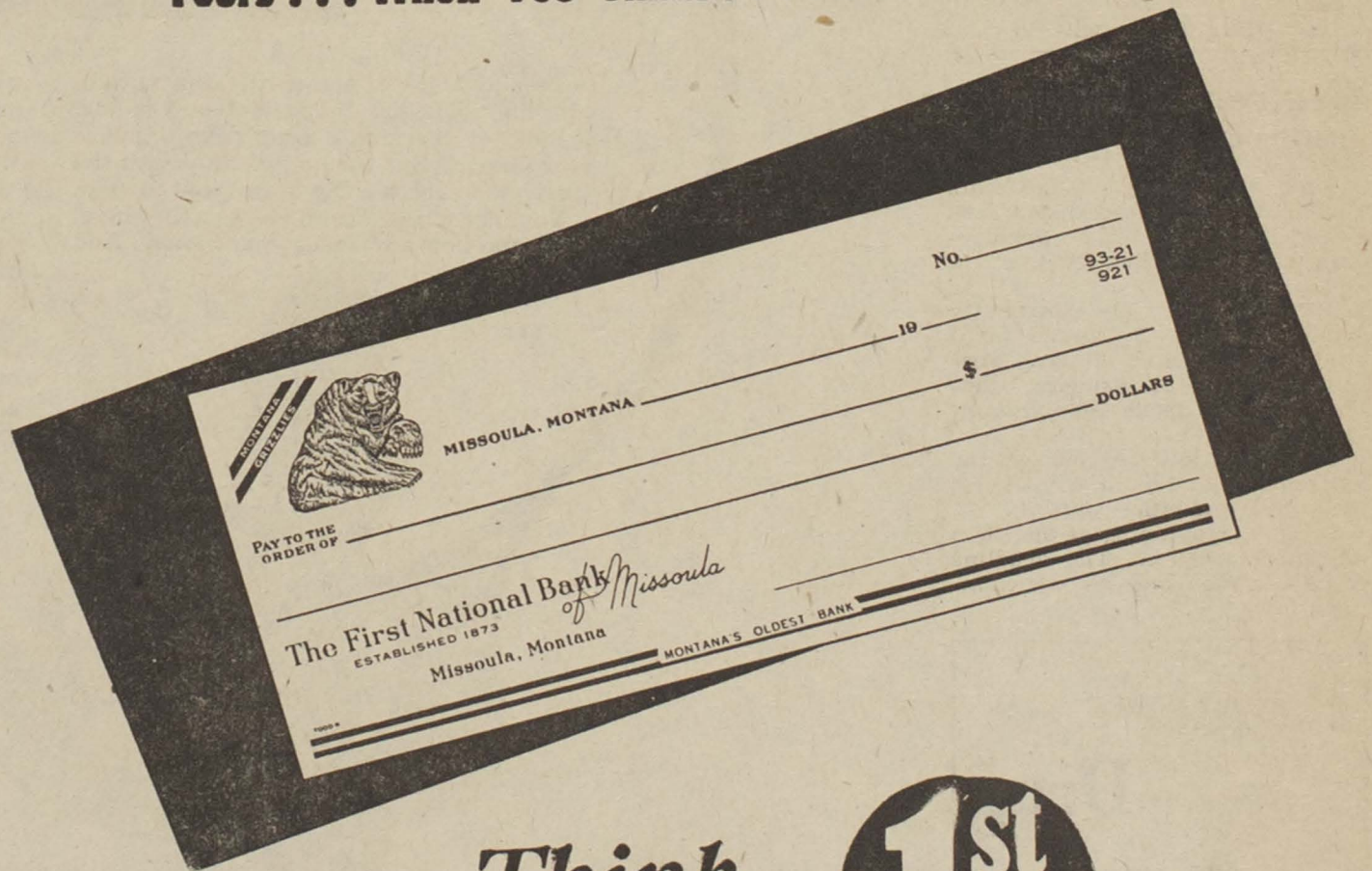
Marquis Childs, noted author, April 12.

L. P. Mei, lectured on China, April.



CHECKS FOR GRIZZLIES . . .

Yours . . . When You Think . . . FIRST

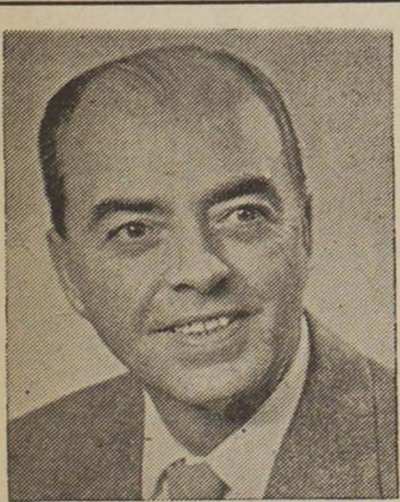


Another "first" from the First. Special Montana State University checks for students and faculty. Individual . . . different . . . get your supply now! Free with regular accounts. 25 for \$2 on "FIRSTCHECK" checking accounts.

Think...



FIRST National Bank • Front and Higgins
MEMBER FEDERAL DEPOSIT INSURANCE CORPORATION



YOU should know this man —

HIS NAME IS

J. Lyle Denniston

AND HE MAY HOLD THE KEY TO YOUR

FUTURE FINANCIAL SUCCESS!

CALL OR WRITE

J. Lyle Denniston

911 Canyon Gate Drive—LI 9-2648
Representing
NEW YORK LIFE
INSURANCE COMPANY

Sororities Gain 140 Neophytes

(Continued From Page One)

Virginia Neal, Philipsburg; Mary Louise Nelson, White Sulphur Springs; Janet Preston, Great Falls; Gail Anne Shaw, Cardwell; Betty Jean Sheble, Choteau; A. Sheryl Wright, Great Falls; Rosemary Wright, Glendive.

DELTA GAMMA

Constance Arrigoni, Dillon; Susan Bickall, Missoula; Lorealea Bratton, Missoula; Phyllis Brooks, Cut Bank; Sandra Brown, Terry; M. Bernadette Burke, Butte; Birgit Burkhard, McConnell, W. Va.; Judy Burnett, Missoula; Jo Pat Crowley, Pocatello, Idaho; Nancy Engelbach, Kalispell; Nicole Eveland, Helena; Jean Evenskaas, Butte; M. Jane Fox, Missoula; Lynne Frisbee, Cut Bank; Dianne Gee, Lewistown; Nancy Glass, Fairfax, Calif.; Nancy LaGrone, Billings; Sally Neath, Helena; Jane Nelson, Missoula; M. Lynn Ric-

ketts, Missoula; Berma Saxton, Helena; Melinda Wilson, Billings.

KAPPA ALPHA THETA

Linda Barran, Spokane, Wash; Susan Cannon, Conrad; Anne Chappe, Billings; Nancy Court-right, Calgary, Ala; Judith Cox, Missoula; June Marie Davis, Great Falls, Jean Eaton, Billings; Martha Fulton, Billings; Linda Gardner, Kalispell; Nancy Halverson, Anaconda; Anita Hamblock, Havre;

Mary Leigh, Drumheller, Alta.; Marion Lewis, Missoula; Barbara Lubrecht, Missoula; Mary McEacheron, Helena; Donna Manley, Napa, Calif.; Ruth Ostenson, Missoula; Linda Phillips, East Helena; Peggy Poucher, Great Falls; Mary Rasmussen, Missoula; Dianna Reber, Helena; Patricia Root, Missoula; Eileen Shea, Walkerville; Sandra J. Smith, Idaho Falls, Idaho; Mary Louise Snyder, Havre; Ilo Viestenz, Sidney; Joan

Watts, Havre; Nancy Elizabeth Wolf, Great Falls.

KAPPA KAPPA GAMMA

Arlee Anderson, Helena; Elaine Bradley, Missoula; Marilyn Brown, Missoula; Carolyn Catrow, Butte; Kathleen Curran, Wolf Creek; Maria Dillon, Billings; Marcia Dion, Helena; Terry Dougan, Missoula; Jacqueline Gordon, Missoula; Georgene Israel, Billings; Thula Johnson, Missoula; Barbara Johnstone, Missoula; Nancy Kayser, Menlo Park, Calif.; Patricia Lantis, Miles City; Geraldine McCarthy, Phoenix, Ariz.; Anne McKie, Billings; Judy McKnight, Salt Lake City; Susanna Paterson, Billings; Star Quisel, Livingston; Lynn M. Sparks, Butte; Janice Kay Sura, Glendive; Cheryl Zadra, Missoula.

Foreign Service Representative To Speak Monday

A representative of the Department of State, Mr. Willard O. Brown, will be on campus Monday. He will tell students majoring in Business Administration, Economics, History, Political Science, Foreign Languages and Geography about Foreign Service work.

Mr. Brown will speak to interested students at 4 p.m. in Conference Rooms 2 and 3 in the Lodge.

Final Masquer Tryouts Tonight To Select Crew for First Play

Final tryouts for the first Masquer play of the season, "The Contrast" by Royall Tyler, will be held tonight in the Fine Arts Building between 7:30 and 9, according to Roger De Bourg, publicity chairman.

Students who are interested in either a part in the play or a position on the production staff are invited to attend.

Sarah James, senior in drama and in her third year as Masquer costume designer, is the director.

"The Contrast," which was the first successful American comedy, will run Oct. 26, 27, 28, and Nov. 3 and 4, in the Masquer Theater, De Bourg said.

Classified Ads

ROYAL standard typewriter. See Mrs. Shoemaker in LA 301 or LA 414. 3c
FOR SALE: Fur stole, like new, Call Ex. 425 or LI 9-6334. 3c
BEAUTIFUL 30-06 Enfield Custom Sporter big game rifle with scope, \$100. See at Chimney Corner barber shop, 540 Daly. 3pd

SIDE OF BEEF 45c LB.
TOP QUALITY CUT and WRAPPED Dress poultry, ducks and geese Wild game in season
SORENSEN LOCKER CO.
Rear of 230 Brooks Hiway 93 Phone LI 3-5280

Three Missoula Churches Merge University Groups

Congregational, Presbyterian and Christian churches of Missoula have united their campus organizations forming one group to be known as the United Campus Christian Fellowship.

The merger follows a parallel move by the churches on the national level to combine their campus ministries.

The UCCF (United Campus Christian Fellowship) will replace Westminster Foundation of the Presbyterian Church, the Congregational Student Fellowship of the Congregational Church and the Disciples Student Fellowship of the Christian Church.

Meetings of the UCCF of interest to MSU students each week will be as follows:

Freshman students, supper and fellowship, Sunday, 5:30 p.m., University Congregational Church.

Upperclassmen and faculty, coffee and discussion, Thursday, 9 p.m., UCCF House, 510 McLeod. The initial meeting of this group will be Thursday.

Married students, last Friday of every month, 8 p.m., UCCF House. This group's initial meeting will be Friday.

Christian athletes, noon hour to be chosen for luncheon meeting. Further details will be announced later.

The UCCF House will be open

Breweries Offer \$300 Scholarship

The University Scholarship Committee announced that a \$300 Great Falls Breweries Scholarship will be awarded for the first time this fall.

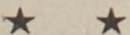
Students must be University juniors, have a 2.5 grade point and be residents of Mineral, Missoula, Ravalli or Sanders counties or come from Helmville or Ovando.

The award will be made on the basis of scholarship, financial need, leadership and citizenship.

Students may apply at the Dean of Students Office. The deadline for application and recommendations is Oct. 9.

Palmer's Drug offers you

- Free prescription delivery service
- Open 9-9 weekdays
- 12 noon-6 Sundays
- Call LI 9-8579 for emergency service.



By the Southside National Bank

Step ahead with a CHECKING ACCOUNT!

MARCH ALONG WITH WESTERN

Is keeping track of money the sour note in your life? Take heart! Let us show you how a personal checking account can organize your finances like the oomp-pah-pah of the sousaphone keeps a big brass band in step. Your checkbook shows you exactly where, when and how you spent your money. And

with a checking account, there's never that problem of carrying too much cash that can be lost. Only you can use your checks! While you're becoming organized effortlessly, you're paying bills effortlessly—by mail. Never any doubts about proving you've paid, either, because cancelled checks are legal receipts.

Get your funds in tune, today. March on over, and we'll show you how a personal checking account can help you keep your money in step.

FORWARD MARCH!



ThriftiCheck COLLEGE CHECKING ACCOUNT FREE MSU VINYL COVER

WESTERN MONTANA NATIONAL BANK

member federal deposit insurance corporation