

University of Montana

ScholarWorks at University of Montana

Montana Kaimin, 1898-present

Associated Students of the University of
Montana (ASUM)

10-11-1961

Montana Kaimin, October 11, 1961

Associated Students of Montana State University

Follow this and additional works at: <https://scholarworks.umt.edu/studentnewspaper>

Let us know how access to this document benefits you.

Recommended Citation

Associated Students of Montana State University, "Montana Kaimin, October 11, 1961" (1961). *Montana Kaimin, 1898-present*. 3738.

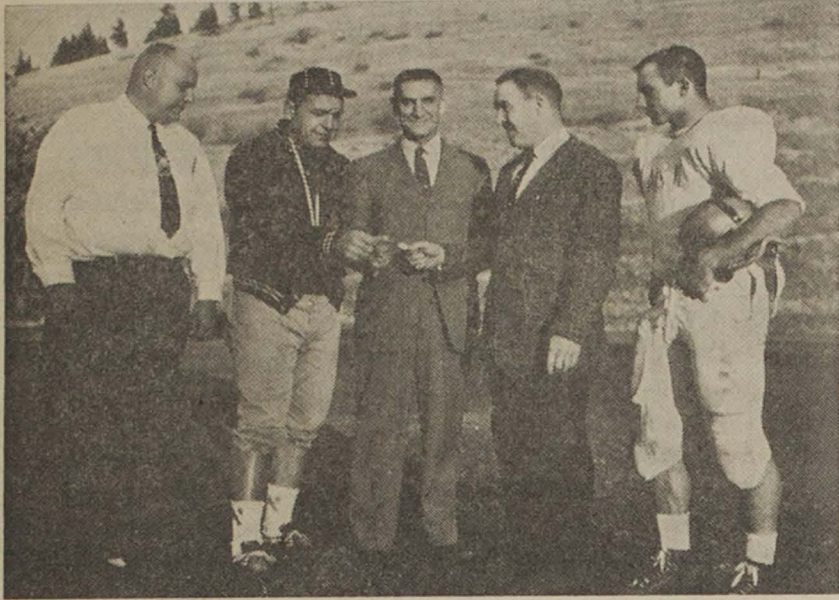
<https://scholarworks.umt.edu/studentnewspaper/3738>

This Newspaper is brought to you for free and open access by the Associated Students of the University of Montana (ASUM) at ScholarWorks at University of Montana. It has been accepted for inclusion in Montana Kaimin, 1898-present by an authorized administrator of ScholarWorks at University of Montana. For more information, please contact scholarworks@mso.umt.edu.

Montana State University
Missoula, Montana

AN INDEPENDENT DAILY NEWSPAPER

64th Year of Publication, No. 9
Wednesday, October 11, 1961



GRIZZLY SUPPORTERS—Gene Miles, president of the Missoula Silvertip Quarterback Club presents a \$3,000 check to MSU Athletic Director Wally Schwank and Grizzly mentor Ray Jenkins. To the left of Miles is MSU quarterback Bob O'Billovich. Standing to the right of Jenkins is Jack Kline, KXLL radio announcer. The \$3,000 will be used for financing athletes' books, the Grizzly training table and future visits of athletic prospects to MSU.

Regents Cut Wages, Approve Forest Laboratory Land Grant

HELENA (AP) — A ceiling of \$1.50 an hour for athletes receiving state money for campus work will become effective at all Montana university systems July 1, 1962.

The \$1.50 yardstick was decided yesterday by the Board of Regents in adopting an intercollegiate athletics policy recommended by all of the unit presidents.

The policy limits the use of state-appropriated funds to:

- Payment of travel expenses of staff members to attend official meetings.

- Maintenance of the physical plant.

- Payment of conference dues and assessments including NCAA and NAIA expenses.

- Payment of student labor.

The policies intent is "to make certain that state-appropriated funds are not used in support of athletes over and above the regular student pay rates for employment in bona fide positions."

Athletes will get academic scholarships or grants in aid only by qualifying on the basis of academic performance.

Under the new guides no new arrangements will be made with student athletes or prospective students athletes which do not conform with the policy.

★ ★ ★

HELENA (AP) — The federal government will get the state land it needs for a controversial forest products research laboratory at Montana State College.

In authorizing Gov. Donald G. Nutter to sign the lease for the land on which the \$175,000 laboratory will be built, the Montana Board of Regents made it plain it has some reservations.

The major objection of board members, including the governor, was that forest research activities planned for the three-phase laboratory should be handled at Montana State University in Missoula.

Clincher for approving the project appeared to be a statement by Sen. Lee Metcalf, D-Mont., that removal of the forest research, or silviculture, phase of the project would lose Montana the present appropriation and require a new one.

Sen. Metcalf explained that Bozeman was selected because the Montana Planning Board, initiator of the project, believed it was nearest to the state's most active lodgepole pine harvest area.

Calling U . . .

Central Board, 7 p.m., Silver Bow Room.

International Coffee Hour, 7:30 p.m., Territorial Room.

Debate and Oratory, 7 p.m., LA 204.

WRA Executive Board, 7 p.m., Women's Center.

Publications Committee, 4 p.m., Committee Room 3.

Christian Science Organization, 5 p.m., Music 103.

Forestry Club, 7:30 p.m., F206.

Home Town News Committee, 7 p.m., Committee Room 2.

Honorary Initiates 17 New Members

Alpha Lambda Delta, national women's scholastic honorary, initiated 17 members last night in Corbin Hall Lounge. Janice Jordan, president, presided at the ceremony and Maurine Clow, associate dean of students, presented the membership certificates.

The initiate were: Bamby Beaumont, Deer Lodge; Chris Cheetam, Dutton; Sandra Crosby, Havre; Mary Lou Cushman, Great Falls; Frances Driver, Kalispell; Karen Dutt, Livingston; Charlene Forjen, Missoula; Judy Krubsack, Polson; Alice MacDonald, Glendive.

Diane Pendergast, Melrose; Mary Rippeto, North Hollywood, Calif.; Barbara Simpson, Moore; Sharon Smith, Butte; Beverly Starry, Libby; Roberta Tarbox, Missoula; Penny Warden, Kalispell; and Ann Wolhowe, Miles City.

Diane Bogar of Vida and Carolyn Selvig of Thompson Falls were enrolled as members of the local chapter although they have not returned to the University.

Central Board Agenda

Reports:

- Publications Committee
- Traditions Board
- Homecoming Committee
- Freshman Camp
- Visiting Lecturers Committee
- Elections Committee

New Business:

- Campaign procedures to be discussed.

Science Awards Are Available to Seniors, Grads

The National Science Foundation will award approximately 2,500 graduate and 135 postdoctoral fellowships for the 1962-63 school year. They are open to college seniors, graduates and postdoctoral students who are U.S. citizens.

The fellowships are for study in the mathematical, physical, medical, biological and engineering sciences; and the fields of anthropology, psychology, geography, economics, sociology, and the history and philosophy of science. The annual grants for graduate students are \$1,800 for the first year, \$2,000 for the intermediate year, and \$2,200 for the terminal year. Post-doctoral fellowships receive annual stipends of \$5,000.

Persons interested must apply at the MSU Graduate School by Jan. 5 for the graduate fellowships, and by December 18 for the postdoctoral fellowships.

Primary Election Is Today; 14 Candidates in Running

Today is election day for freshmen delegates to Central Board. The signs are down and the 14 candidates must temporarily discontinue their campaigning as the freshman portion of the student body decides their fate.

Six of the following candidates will be on the ballot of the general election Tuesday.

They are Gene Buck, David Carlson, George Cole, Douglas Evans, Terry Fitzpatrick, Lynne Gesas, Pat Harrison, Bob Hayman, Keith Nichols, Michael Oke, Susanna Patterson, Gary Peterson, John Wantulok and Nancy Wulf.

The primary election booth is in the Lodge. Voting hours are from 9 a.m. to 5 p.m. A special booth to handle a possible overload will be situated in the Lodge Grill from 11:30 a.m. to 2 p.m. today.

This year there are some changes in election procedure which have been initiated by Steve Carroll, elections committee chairman.

According to Carroll, a substance which can be detected under ultra-violet rays will be placed on each voter's hand to prevent students from voting twice. The voters must have their activity cards with them to register. They will not be allowed to talk to Spur and Bearpaw attendants.

Carroll added that no one other than those members of elections committee will be allowed in AS-MSU offices when the ballots are counted.

"We have had a problem with unauthorized people present at ballot counting, and others have made complaints. This security measure is designed to eliminate

Law School Sets Entrance Exams

Law School Admission Test will include achievement as well as aptitude tests, Robert E. Sullivan, dean of the law school, said today.

The tests, given by the Educational Testing Service, are scheduled for Nov. 18, 1961, and Feb. 10, April 28 and Aug. 4, 1962 at MSU.

A bulletin of Information should be obtained from Educational Testing Service, Princeton, N.J., by applicants at least a month before the date of the test, and return the application at least two weeks before the test.

The examination will consist of an aptitude test in the morning session, and tests of writing ability and general background in the afternoon, Dean Sullivan said.

all possibility of any form of 'fixed' elections," Carroll said.

Carroll also emphasized the importance of the convocation tomorrow at 7:15 p.m. in the University Theatre.

"This is especially important for freshmen," Carroll said. "In this school of over 4,000 students and over \$163,000 in students funds, it is important that all student realize their importance and duty in student administration."

Enrollment Up 13½ Per Cent At U System

HELENA (AP)—Enrollment at the six units of the University of Montana System reached 11,859 students yesterday. This is up 13½ per cent from a year ago.

Ranking one, two and three are schools in Bozeman, Missoula and Billings.

Russell Barthell, executive secretary for the system, gave these net enrollment figures, compared with a year ago:

Montana State College in Bozeman 4,270 and 3,868.

Montana State University in Missoula 4,150 and 3,687.

Eastern Montana College of Education 1,652 and 1,376.

Northern Montana College in Havre 821 and 678.

Western Montana College of Education in Dillon 587 and 498.

Montana School of Mines in Butte 379 and 339.

Barthell said these preliminary totals are greater than predictions made for each unit as well as for the entire system.

Figures are 6.6 per cent greater than the total of 11,122 students used with other factors by the Legislature in figuring appropriations for the university system.

Kaimin, Sentinel Applications Due

Applications for Sentinel Associate Editor and Kaimin photographer are due today at the Lodge desk by 4 p.m.

Interviews will be in Committee Room 3 at 4:15 p.m. for both positions. Kaimin photographer applicants must have samples of their work.

Kaimin photographer pays a salary of \$25 per month and Sentinel Associate Editor pays a salary of \$10 per month.

Burdened Berlin Police May Not Get Relief

BERLIN (AP)—East Germany's Communist regime told the West last night that attempts to bring West German police into West Berlin by air or land would be considered aggression.

The note referred to West German plans to send traffic police to Berlin to relieve West Berlin police already burdened by border duty along the 25-mile wall dividing the city.

The East Germans meanwhile extended military service terms and engaged in their biggest maneuvers around Berlin to date.

U.S. Communists Must Register

WASHINGTON (AP) — Atty. Gen. Robert F. Kennedy — citing Monday's Supreme Court action—says the Communist party must

now register as an arm of the Soviet Union.

Within 30 days, said Kennedy, the Communist party must file with the Justice Department the names and addresses of the party's officers and members during the past year. It must also give an accounting of its finances and a list of printing presses owned or controlled by the party or its members.

Invasion Charges Termed Ridiculous

WASHINGTON (AP) — Cuban charges that the United States is training new invasion forces at 20 U.S. and 9 Caribbean bases were denounced as "totally unfounded" and "ridiculous" by the State Department yesterday.

Exiles in Florida were generally

skeptical that any new large scale training was under way. But some acknowledged a feeling that something is brewing against the Communist-leaning regime of Prime Minister Fidel Castro.

Air Guard Called In Three States

WASHINGTON (AP)—Another 2,250 Air National Guardsmen have been ordered to active duty Nov. 1 by the Pentagon.

The callup Monday was for three jet fighter squadrons in South Carolina, Arizona and Tennessee.

The three units have 65 F-104 jet Starfighters, bringing to more than 500 the number of planes and accompanying personnel called by the Air Force. Eighteen other Air Guard and Air Reserve units were mustered Oct. 1.

Plane Hijackers Want Fair Trial

EL PASO, Tex (AP) — Leon Bearden, charged with attempting to hijack a jet airliner Aug. 3 wants his trial transferred to a neutral country.

In a petition filed with U. S. District Court Monday, Bearden contended he couldn't get a fair trial in the United States because he is "an atheist and Socialist who has renounced his American citizenship."

U.S. Recognizes New Syrian State

WASHINGTON (AP) — The United States yesterday recognized the new state of Syria.

The State Department announcement said:

"The United States government, having taken note of the declaration of the government of the Syrian Arab Republic that it intends to respect and observe its international obligations, has today extended recognition to that government."

U. S. officials made it clear early this month that the United States would recognize Syria as soon as some of the more important Arab countries recognize the new regime.

USSR SENTENCES TWO SPIES

KIEV, U.S.S.R. (AP) — Two Dutch merchant seamen, one of whom expressed regret that he had played badly the game of spying, were given unusually severe sentences of 13 years in prison by a Soviet military court.

MONTANA KAIMIN

—ESTABLISHED 1898—

Published every Tuesday, Wednesday, Thursday and Friday of the school year by the Associated Students of Montana State University. The School of Journalism utilizes the Kaimin for practice courses, but assumes no responsibility and exercises no control over policy or content. ASMSU publications are responsible to Publications Board, a committee of Central Board. Represented for national advertising by National Advertising Service, New York, Chicago, Boston, Los Angeles, San Francisco. Entered as second-class matter at Missoula Montana. Subscription rate, \$3 per year.

Frank Walsh editor
Marie Stephenson . bus. mgr.
Judy Rollins . . news editor
Tom Flaherty . . sports editor



Jerry Holiday assoc. editor
Printer Bowler assoc. editor
Sam Donaldson assoc. editor

Prof. E. B. Dugan adviser

Guest Editorial

'Sage Advice'

State Press, Arizona State University

"1. Bring the professor newspaper clippings dealing with his subject. Demonstrate fiery interest and give him timely items to mention to the class. If you can't find clippings dealing with his subject, bring any clippings at random. He thinks everything deals with his subject.

"2. Look alert. Take notes eagerly. If you look at your watch, don't stare at it unbelievably and shake it.

"3. Nod frequently and murmur, 'How true.' To you this seems exaggerated. To him, it's quite objective.

"4. Sit in front, near him. (Applies only if you intend to stay awake.) If you're going to all the trouble of making a good impression, you might as well let him know who you are, especially in a large class.

"5. Laugh at his jokes. You can tell if he looks up from his notes and smiles expectantly, that he had told a joke.

"6. Ask for outside reading. You don't have to read it. Just ask.

"7. If you must sleep, arrange to be called by a friend at the end of the hour. It creates an unfavorable impression if the rest of the class has left and you sit there alone, dozing.

"8. Be sure the book you read during the lecture looks like a book from the course. If you do math in Psychology class and vice versa, match the books for size and color.

"9. Ask any questions you think he can answer. Conversely, avoid announcing that you have found the answer to a question he couldn't answer, and in your younger brother's second grade reader at that.

"10. Call attention to his writing. Produces exquisitely pleasant experiences connected with you. If you know he's written a book or an article, ask in class if he wrote it.

"As to whether or not you want to do some work, in addition to all this, well, it's controversial and up to the individual."

—Robert Tyson, Hunter College psychology instructor, Arizona State University.

Letters to the editor should be typewritten (double spaced) and signed. The Kaimin reserves the right to edit, so please keep letters reasonably short.

LITTLE MAN ON CAMPUS

By Dick Bibler



"HE'S NOT REALLY HARD UP FOR PAPER—IT'S JUST RUGPAD'S WAY OF SUGGESTING YOU TAKE MORE TIME IN PREPARING FOR YER LECTURES."

To Counteract Browman

Union Circulates Suggestions For Faculty Senate Election

By TED HULBERT

The University Teachers Union, an affiliate of the American Federation of Teachers, has circulated to the faculty a list of suggestions for members of the Faculty Senate.

The teachers union list is an apparent effort to counteract a list circulated privately by Professor Ludvig G. Browman of the Department of Zoology.

Ballots in the primary election for the Senate are due Friday.

Mr. Browman, asked if he had circulated a list preceding the teachers union list of suggestions, said:

"I have my ideas of the members I might vote for. I understand a series of lists are being circulated. My list was sent to a limited number of people."

The teachers union list apparently was sent to all members of the faculty. Mr. Browman said he had sent his personal suggestions to "key personnel scattered around the campus."

Election Procedure

Here is the procedure that will be followed in forming the Faculty Senate:

Each faculty member in the primary election will vote for 15 persons, having a choice of any members of the faculty within his own division of the University. For example, a member of the Arts faculty will vote for any 15 members of the College of Arts; a member of the Sciences faculty will vote for 15 members of the College of Sciences; and a faculty member in one of the professional schools will vote for 15 members within the professional schools.

The top 30 persons chosen in each of the three categories will then appear on the final election ballot, and the entire faculty will vote for 15 persons in each of the three categories, electing a total of 45 Senate members.

To Draw Lots

The elected members of the Senate will then draw lots for one, two and three year terms.

The faculty approved the plan for a Senate last spring, with the thought that such a body could handle faculty business more effectively than frequent and cum-

Montana AWS Convention Set

The State Associated Women Students' Convention is scheduled for Oct. 27 and 28 on the MSU campus.

Women will discuss common problems of AWS organizations in Montana colleges, Sharon Blaszek, AWS president, said yesterday.

Four official delegates from each of the nine Montana colleges have been invited. Delegates will come from Montana State College at Bozeman, Eastern Montana College of Education and Rocky Mountain College at Billings, Western Montana College of Education at Dillon, Northern Montana College of Education at Havre, Montana School of Mines at Butte, Carroll College at Helena, the College of Great Falls and Miles City Junior College.

Patronize the Advertisers

Bubble UP
Deliciously lighter!

Zip Beverage Co.
Manufacturers and Jobbers
Missoula, Montana

bersome meetings of the entire faculty. With the Senate plan in operation, there likely will be meetings of the entire faculty only once a quarter.

The teachers union, which is composed of 16 faculty members, circulated its list of suggestions Monday. A spot check of faculty members indicated that most had received the list by Tuesday.

Union List

The names which appeared on the teachers union list are:

Arts—Agnes Boner, F. L. Brissett, Walter Brown, Paul Carter, Marguerite Ephron, George Heliker, James Leonard, Edwin Marvin, Charles Parker, Thomas Payne, Cynthia Schuster, Richard Shannon, Lucile Speer, Jacob Vinocour and Melvin Wren.

Sciences — Ludvig Browman, Gordon Castle, Meyer Chessin, Fred Honkala, John Hower, Mark Jakobson, Rulon Jeppesen, Arthur Livingston, Mitsuru Nakamura, Keith Osterheld, John Peterson, E. W. Pfeiffer, John Stewart, Robert Weidman, Philip Wright.

Professional Schools — Arnold Bolle, Edwin Briggs, Firman Brown, Donald Emblen, Robert Gorman, Aaron Harper, Albert Helbing, Walter Hook, Kenneth Lottick, David Mason, Melvin Morris, Lloyd Oakland, Vernon Sletten, Eugene Weigel and Frederick Yu.

Palmer's Drug

offers you

- Free prescription delivery service
- Open 9-9 weekdays
- 12 noon-6 Sundays
- Call LI 9-8579 for emergency service.
- Russell Stover Candies
- Hallmark Cards

By the Southside National Bank

Our business was going when GRANDMA WAS A GIRL!

BUT

Ours is a sharp, modern plant ready to produce FINE PRINTING FOR YOU!

DELANEYS BUREAU OF PRINTING
125 EAST FRONT ST.



Snow's A & W

On the 93 Strip

PIZZA Specialty Our

Orders of \$3 or over delivered free within a two-mile radius. Call LI 9-1697.

8-in pizzas from \$.75 to \$1.00
12-inch pizzas from \$1.25 to \$1.75

Mushroom - Pepperoni - Sausage - Hamburger - Combination

L N
E Y
E E



It may be a luxury
But it ain't expensive!!!
Portrait Studies
LI 2-2845

IS YOUR CAR READY FOR WINTER?

Check These Vital Points

LUBRICATION — Lube with heavy duty Conoco grease. Oil plate with Conoco oil.

IGNITION — Be sure your ignition is in top-flight order. Let us check it.

TIRES ROTATED — Periodic rotation of your tires will help them to last. We'll do it.

BATTERY — Quick starts demand a good battery. Let us check it today.

MECHANIC ON DUTY
Brooks St. Conoco
510 Brooks

Patronize the Kaimin Advertisers

For the DRINKS of



DRINKS,

or for that matter,

For the Best in Dairy Products

Community Creamery

Ph. LI 3-3173

No Developments Appearing On New Conference for Grizzlies

By DOUG KIENITZ

There are no new developments involving MSU or the possibility of a new athletic conference, according to Walter Schwank, director of health, physical education, and athletics.

He said that until the proposed Great Western Athletic Conference is a reality, there is not much we can do. Colorado State University and Utah State have applied for admission into the conference, he said, and if they are accepted, we will have to cast around for other competitors.

Members in the proposed conference are Arizona, Arizona State, Brigham Young, Utah, New Mexico, and Wyoming.

Schwank said that we are not seriously interested in the possible formation of a Western Empire Conference, which would include MSU, MSC, Idaho, Idaho State, Portland University, Seattle University, and Gonzaga. The main

reason MSU is not interested because Portland, Seattle, and Gonzaga do not play football, but instead place strong emphasis on basketball.

"Any conference MSU joints will include all sports," Schwank said, "as we have no intention of dropping football."

He added that if the four state-supported schools would form a conference with the three privately-endowed schools, some problems may arise concerning the scholarship program and recruiting.

Concerning the possibility of a conference including the two state-supported school from each Montana, Idaho, North and South Dakota, Schwank said that distance is a major factor in the alignment. The financing of all sports is pretty expensive, he said, when such a long distance has to be made for every game.

When asked about the chances of forming a league with all Montana units of the university system, Schwank said that there has been no mention made of this.

He said, "There has been no move on anyone's part to form a league within Montana."

Such a difference in the enrollment of Montana schools would be a major factor in the plan, Schwank said. MSU is looking for a conference that offers all sports and has similar academic and financial plans, he added.

Schwank said that the Skyline Conference will have a champion in football through the 1963 season. However, all other Skyline sports will end July 1, 1962.

He added that MSU will continue to compete with the Skyline teams in other sports after this year even though the conference will no longer be in existence.

Much Time Needed to Start Great Western Conference

TUCSON, Ariz. (AP)—Dr. Richard A. Harvill, president of the University of Arizona, says it will be some time before the proposed Great Western Athletic Conference is an actuality.

A preliminary meeting of presidents of six schools planning to form the league will be held in Denver Wednesday.

"This is just a meeting of presidents," Harvill said Monday. "There will be no athletic directors and no faculty representatives."

"As I envisage it, it will take quite a while to work it out. All the schools have their schedules made out well in advance, and most of them are members of other conferences now."

The six schools beside Arizona are Arizona State University, Wyoming, Brigham Young, Utah and New Mexico.

Arizona left the Border Conference last year, and Arizona State

is leaving it this year. The other schools are members of the Skyline Conference.

Make Studying Enjoyable

with an



From The

PIZZA OVEN

Highway 93 South

LI 9-9417

Dodson Second In Scoring

BYU Back Takes Offense Lead In Week's Football Statistics

DENVER (AP) — The lead in total offense in the Skyline Football Conference changed hands again this week, with Eldon Fortie of Brigham Young now on top.

The Cougar tailback has a total of 479 yards in 108 plays. Bill Berringer of Colorado State University is next at 336 and Mel Montalbo of Utah State, leader a week ago, holds third with 327.

The league-leading scorer is Paul Allen of Brigham Young with 24 points, but Montana's Pat Dodson is only 2 points behind.

In the ball-carrying department, Bob Bisacre of Wyoming shows the best average among players with 40 or more carries, averaging 4.4 yards.

Utah's Gary Hertzfeldt has strung together the most yardage with passes, 303 yards. Andy Melosky of Wyoming and Bill Munson of Utah State are tied at 500 for accuracy. Melosky has completed 17 of 34 passes, Munson 13 of 26.

Joe Borich of Utah held on to his place as the league's No. 1 pass catcher, with 13 for 249 yards. Bill Wright of Brigham Young has averaged 47.5 yards a kick as the outstanding punter. Tom Lar-

scheid of Utah State has the best mark in kickoff returns among players with 5 or more, averaging 25.6 yards.

Here are team leaders: Total offense, Utah State, averaging 358.5 yards a game.

Rushing, New Mexico, averaging 239 yards.

Passing, Utah State, averaging 124.8 yards.

Total defense, Utah State, with 4 opponents averaging 148.8 yards a game.

Rushing defense, Utah State, opponents averaging 51 yards.

Passing defense, Wyoming, opponents averaging 72.8 yards.

Utah State has averaged 28.7 points a game for a big edge in scoring, while Wyoming has been the stingiest, holding four foes to an average of 6.5 points.

SIDE OF BEEF 45c LB.
TOP QUALITY CUT and WRAPPED
Dress, poultry, ducks and geese
Wild game in season
SORENSEN LOCKER CO.
Rear of 230 Brooks
Hiway 93 Phone LI 3-5280

INTRAMURAL FOOTBALL FRATERNITY LEAGUE

Today's Games

- Field 1**
4 p.m. TX vs. SPE
5 p.m. ATO vs. PDT
Field 2
4 p.m. SAE vs. SN
Field 3
4 p.m. PSK vs. SX



Enjoy Bowling?

Treasure State Bowling Center

Highway 93 South has

OPEN BOWLING

Fridays, Saturdays and Sundays and after 9 p.m. Mondays, Tuesdays and Wednesdays.

Free Nursery in Afternoon Pro Shop Kelley's Snack Bar

Happy Henry's Cafe

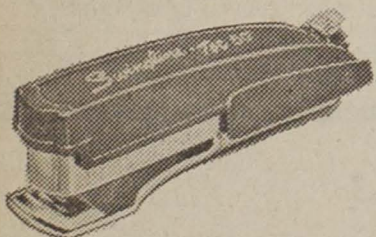
Drop in to see us. We give the happiest service and the best food in town.

OPEN ALL NIGHT

Palace Hotel



Medusa was once heard to rave: "A new hair-do is just what I crave, With my Swingline I'll tack All these snakes front to back, And invent the first permanent wave!"



SWINGLINE STAPLER

no bigger than a pack of gum!

98¢ (including 1000 staples)

- Unconditionally Guaranteed
- Made in America!
 - Tot 50 refills always available!
 - Buy it at your stationery, variety or bookstore dealer!

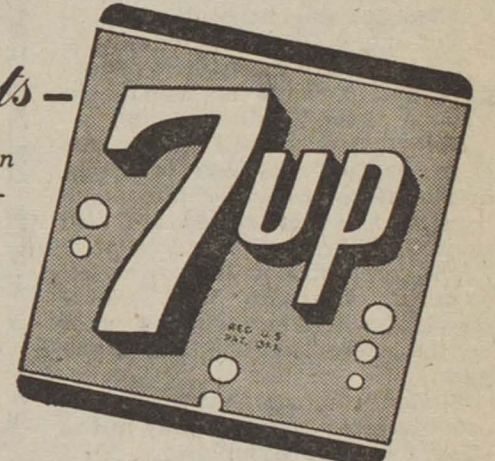
Swingline INC. Long Island City 1, New York
WORLD'S LARGEST MANUFACTURER OF STAPLERS FOR HOME AND OFFICE

THE ALL-FAMILY DRINK!

So pure . . . So good . . .
So wholesome for everyone!

The ingredients—

of 7-Up are proudly stated on the back of every bottle—"Contains carbonated water, sugar, citric acid, sodium citrate, flavor derived from lemon and lime oils."



COPYRIGHT 1949 BY THE SEVEN-UP COMPANY

COCA-COLA BOTTLING CO. OF MISSOULA

SIC FLICS



"I understand you don't see eye-to-eye with Professor Shultz...."



21 GREAT TOBACCOS MAKE 20 WONDERFUL SMOKES!
AGED MILD, BLENDED MILD—NOT FILTERED MILD—THEY SATISFY

Deadline Set For Tickets

The deadline for buying tickets at a discount for the performance of the Smetana Quartet is Sunday, according to Eugene Andrie, professor of music.

The quartet, scheduled for Jan. 28 at MSU, last appeared in Missoula on the MSU music series two years ago. The ensemble from Prague was the first chamber group from behind the Iron Curtain to visit America.

Members of the group include Milan Skampa, violist, Antonin Kohout, cellist and Jiri Novak and Lubomir Kostecky, violinists.

Persons who wish to purchase tickets at the discount price should call the University extension 313, Mr. Andrie said.

Math Prof from Wisconsin Will Speak Here Today

R. H. Bing, professor of mathematics at the University of Wisconsin, is scheduled to speak at 2 p.m. today in Room 311 of the Math-Physics Bldg.

Mr. Bing will speak on "Attempts to Solve the Poincare Conjecture," according to Arthur E. Livingston, chairman of the mathematics department.

Mr. Bing, mathematician and topologist, is visiting MSU as a lecturer for the Mathematics Association of America.

Orchestra Needs String Players

The University Orchestra needs string players, especially cellists and violists, Eugene Andrie, director of the group, said today.

The orchestra meets on Wednesdays and Fridays at 3 p.m. in Room 1 of the Music Building.

Students may still enroll for credit or they may take orchestra on a non-credit basis. Staff members who are interested are also invited to play in the orchestra.

The orchestra will appear on campus, on radio and television and will take a short tour of Southwestern Montana later in the year.

Students and staff members who are interested may also play in the Missoula Civic Symphony. MCS meets at 7:30 p.m. on Thursday in the Music Building.

Army Interviews Start Here Today

An Army Medical Specialist Corps representative, Capt. Marilyn J. Anderson, is scheduled to appear on campus today and tomorrow to interview students and faculty, and to acquaint them with opportunities offered by the Army Medical Service in the fields of occupational therapy, physical therapy, and dietetics, according to Maj. Donald C. Fox.

Capt. Anderson, from the Presidio of San Francisco, is a physical therapist and a graduate of the University of Washington. She will be available for interviews at the Army ROTC department today and tomorrow. Persons desiring an interview should call Ext. 279.

Classified Ads

FOR SALE: 54-vol set "Great Books Western World." \$325. LI 3-7511 11c
FOR SALE: 3-speed German-made bicycle. LI 3-6728. 9c
FOR SALE: Light blue formal, size 13, \$7.50. LI 9-3363. 11c

Well . . .

Keep it off dead center and hit the Thursday scene.

"CLIQUE-PIX"

Miniature portraits at Lee Nye's

LI 2-2845

GOOD YEAR PRE-SEASON

WINTER TIRE SPECIALS!

GUARANTEED

Rayon 18 Months | Nylon 21 Months



College Specials

GOODYEAR 3-T Suburbanites

New Tire Buys!

More traction where there's snow,
More mileage where there isn't!

Never Lower Priced!

\$15⁹⁵

6.70 x 15 Black Rayon Tube Type plus tax and old tire off your car

We're Winter-Tire Headquarters for
Blizzards of Bargains!

25% OFF
Goodyear - All Sizes

Suburbanite Retreads

Walnut Shell or Regular Rubber

Goodyear Road Hazard Guarantee
ALL NEW GOODYEAR AUTO TIRES ARE
GUARANTEED NATION-WIDE

1. Against normal road hazards—i.e., blowouts, fabric breaks, cuts—except repairable punctures. Limited to original owner for number of months specified.
2. Against any defects in workmanship and material without limit as to time or mileage.

Any Goodyear tire dealer (over 60,000 in all 50 states) will repair tire without charge, or make allowance on new tire based on original tread depth remaining and the current "Goodyear price."

Goodyear Permanent
Anti-Freeze

\$1⁹⁵ per gal.

Carry-out Price

Mixes with all other major Anti-freeze Brands

Used
Winter Tire Bargains

\$5⁵⁰ up

All Sizes, While They Last!

GOOD YEAR
MUELLER TIRE COMPANY

"Western Montana's Tire Center"

130 West Broadway

Ph. LI 9-2363