

University of Montana

ScholarWorks at University of Montana

Montana Kaimin, 1898-present

Associated Students of the University of
Montana (ASUM)

11-16-1961

Montana Kaimin, November 16, 1961

Associated Students of Montana State University

Follow this and additional works at: <https://scholarworks.umt.edu/studentnewspaper>

Let us know how access to this document benefits you.

Recommended Citation

Associated Students of Montana State University, "Montana Kaimin, November 16, 1961" (1961).

Montana Kaimin, 1898-present. 3759.

<https://scholarworks.umt.edu/studentnewspaper/3759>

This Newspaper is brought to you for free and open access by the Associated Students of the University of Montana (ASUM) at ScholarWorks at University of Montana. It has been accepted for inclusion in Montana Kaimin, 1898-present by an authorized administrator of ScholarWorks at University of Montana. For more information, please contact scholarworks@mso.umt.edu.

Montana Kaimin

Montana State University
Missoula, Montana

AN INDEPENDENT DAILY NEWSPAPER

64th Year of Publication, No. 30
Thursday, November 16, 1961



STARTS TONIGHT—Anton Schill, played by Alan Naslund, threatens wealthy Claire Zacchanasian, played by Georgia Benton, on her hotel balcony,

but she is not phased in Friedrich Durrenmatt's "The Visit," which begins tonight at 8:15 in the University Theater.

Second Masquer Production

'The Visit' Opens Tonight To Begin Three-Day Run

Friedrich Durrenmatt's drama, "The Visit," begins a three-day run on the University Theater stage tonight.

The second Montana Masquer production for fall quarter is being directed by Douglas H. Bankson, associate professor of drama. Richard James Jr., is designer and technical head and Sarah James is costume designer.

Georgia Benton portrays Claire Zacchanasian, a wealthy woman who revisits her childhood town to give financial aid—on the condition her lover of many years before, one of the town's leading citizens, is killed.

When the wealthy one arrives, she is accompanied by a coffin and a cage which houses a black panther.

Alan Naslund and Jim Baker have the other leads.

The box office is open daily at

noon in the University Theater where reservations can be made by calling ext. 309. Season tickets will be on sale until Saturday.

The third Masquer production for fall quarter, Clifford Odets' "The Country Girl," will run Nov. 30; Dec. 1, 2, 7 and 8 in the Masquer Theater.

Central Board Hears Report On MSC Train

Hal Woods, chairman of Traditions Board reported last night at Central Board that the Grizzly Special was a success in spite of the band not being on board.

Woods reported that it cost \$2,475 for the train and that \$2,486.05 had been taken in. With expenses there was a deficit of \$33, he said, but there were about 20 students who sneaked on board and their names had been taken and they would either pay for a ticket or have their grades withheld.

Central Board also decided to draw up a resolution concerning transportation of the band. Ed Whitelaw said that Mr. Eversole had pulled the wool over Central Board's eyes by leaving the impression that the band wanted to go by bus rather than on the Grizzly Special. Whitelaw said that he had talked to several members of the band and that they had wanted to ride on the train.

In further action Central Board voted \$286 to start the MSU Bruins on their 1961-62 season. This was to cover rent of the hockey rink in Butte, where the Bruins will play Gonzaga this weekend, for travel expenses and for the guarantee to the Gonzaga team. Sixty-seven dollars was also voted to the hockey club for administrative and equipment costs.

Social Standards Group to Make Discipline Study

At the first meeting of the Social Standards Subcommittee yesterday, Steve Carroll, chairman, said that the job of the group will be to make a detailed study of student discipline at MSU.

Carroll told the members that they can arrive at a broad conclusion of the value of present MSU social rules that is factual. He said that the Social Standards Subcommittee will study the history of student discipline at MSU and conduct polls to determine current student opinions.

Much of the meeting was devoted to proposing new members for the subcommittee.

Present members are Carroll, Doug Chaffey, Tom Farrington, Ann Minter and Diane Mossey.

Rayburn Is Dead

WASHINGTON (AP) — House Speaker Sam Rayburn died at 6:20 a.m. CST in the hospital at Bonham, Tex., his home town, Zeke Johnson, sergeant at arms of the House of Representatives announced today.

From the Kaimin News Wires

U.S. Orbits Three New Satellites

By HOWARD BENEDICT
Associated Press Staff Writer
Three new United States satellites circled the globe today seeking data for navigation and spy-in-the-sky space systems.

The trio soared aloft Wednesday in one of this nation's most productive days in the space age.

Two of the satellites rode skyward in the nose of a Thor-Able-Star rocket fired from Cape Canaveral Wednesday night. One is the 190-pound Transit 4B, partially powered by a nuclear generator. The other is a 240-pound "Dumbbell" package which is intended to stretch out more than 100 feet in two weeks in a satellite stabilization experiment.

The satellite twins gave the U.S. a big boost toward a space navigation network to guide ships, planes, submarines and missiles.

Earlier, the 35th rocket in the Discoverer series flung a satellite into orbit from Vandenberg Air Force Base, Calif., in another try at developing means of recovering capsules from space.

Within a few days, the Discoverer is scheduled to eject a capsule which Hawaii-based planes will attempt to snare as it parachutes to earth. Eight such capsules have been retrieved in previous tests. Perfecting the technique is essential for recovering data from the Midas missile detector and Samos reconnaissance

satellites.

The successes raised the total of successful U.S. satellites to 59. The Soviet Union has orbited 13.

Military Charged 'No Sense, Limits'

DETROIT (AP)—Former Army Secretary Wilber M. Brucker, commenting on a Nov. 8 air crash at Richmond, Va., in which 74 recruits died, charged that the U.S. military has become muzzled beyond common sense or traditional limits.

"There were our own sons. We were responsible for their safekeeping. They were already in the Army, soldiers for one day. Yet they were transported aboard a rattletrap plane, handled as indifferently as one might ship cordwood," he said.

Couple Will Stay In Czechoslovakia

VIENNA, Austria (AP) — The wife of University of Washington scientist Charles O. Junge said in Prague yesterday "my husband and I would like to stay in Czechoslovakia for the rest of our lives." Dr. Josephine Junge, reached in the Czechoslovakia capital by tele-

phone from Vienna, said she and her husband had written their families and the University of Washington "explaining why we want to live in this country."

Asked what their motives were for wanting to live in a Communist country, she said: "I don't have to answer this. It is all explained in the letters."

Leftist Commands Congolese Mutiny

LEOPOLDVILLE, the Congo (AP)—A mutiny of more than 2,000 Congo government troops has broken out in the eastern Congo, the United Nations announced yesterday, and diplomats said the defiance was under the personal command of leftist leader Antoine Gizenga.

Diplomatic informants said Gizenga, heir of former Premier Patrice Lumumba, was directing the revolt against central government authority in Kindu, the Kivu Province town north of the secessionist Katanga Province.

Gizenga's open defiance of the United Nations and the Congo's central government, of which he nominally is a vice premier, was reported three days before a scheduled Nov. 18 conference to which Gizenga has invited all "true nationalists of the Congo."

Former Graduate School Dean Dies at Home Following Illness

Dr. Wesley P. Clark, 79, dean emeritus of the MSU Graduate School and professor of classical languages at the University for 31 years, died yesterday morning at his home, 310 McLeod Ave., following an extended illness. His remains will be sent to Spokane today for cremation.

He was born April 5, 1882, in Winterpock, Va. He received his A.B. degree from the University of Richmond in 1903, and his A.M. degree from the same university in 1904. At the University of Chicago Mr. Clark received his Ph.D. in 1928.

Mr. Clark was a professor of Greek and Latin at MSU. He became chairman of the department of classical languages in 1928, and dean of the graduate school in 1946. He retired in 1952.

Mr. Clark had been active in Montana education. He served as Montana chairman for the American Association of University Professors. He was a member of the American Federation of Teachers, American Philology Association, American Classical Association of Pacific States. He also contributed many articles,

book reviews and notes to classical journals.

Survivors include his widow at the family home, two sons and two daughters living out of state, 16 grandchildren and several nieces and nephews.

The family requests that memorial contributions be sent to the American Cancer Society in care of Mrs. Marion Dixon, 239 Dixon Ave.

Swimming Party To Be Tomorrow

Four bits and a bathing suit will get you into the Student Union Beach Party on the sands of the University Pool tomorrow at 8 p.m.

According to Mary Lou Pengelly, chairman of Special Events Committee, students may come stag or drag.

Blumberg Speaks At Press Party

Nathan B. Blumberg, dean of the journalism school, spoke last night on Thailand to 31 women at the Annual Women of the Press party in the Journalism Building.

The people of Thailand, Mr. Blumberg said, are soft, gentle, easy-going people who willingly adapt to their culture anything that they approve. Thai people live like our millionaires, he said. They work when they want to, eat well and are well-clothed.

Mr. Blumberg was in Thailand for two months last summer as an American specialist for the State Department. He was an adviser in journalism at Thammasat University in Bangkok and consulted with journalists throughout Thailand.

Calling U . . .

Grizzly Growlers, 6:30 p.m., Yellowstone Room. Constitution changes.

Traditions Board, 4 p.m.

Miss MSU Parade Committee, 6:30 p.m., conference rooms.

Gymnastics Club, 7:30 p.m., Men's Gym, mixed.

Young Americans for Freedom, 4 p.m., Silver Bow Room. Wayne Montgomery to speak.

UCCF, 9 p.m., 510 McLeod for upperclassmen.

"Overhead TV" demonstration, 4:15 p.m., Radio-TV Building.

MONTANA KAIMIN

Expressing 64 Years of Editorial Freedom

Frank Walsh editor
 Marie Stephenson . bus. mgr.
 Judy Rollins . . . news editor
 Tom Flaherty . . . sports editor



Jerry Holaday assoc. editor
 Printer Bowler assoc. editor
 Sam Donaldson assoc. editor
 Roger Zentzis photog.

Prof. E. B. Dugan adviser

Published every Tuesday, Wednesday, Thursday and Friday of the school year by the Associated Students of Montana State University. The School of Journalism utilizes the Kaimin for practice courses, but assumes no responsibility and exercises no control over policy or content. ASMSU publications are responsible to Publications Board, a committee of Central Board. Represented for national advertising by National Advertising Service, New York, Chicago, Boston, Los Angeles, San Francisco. Entered as second-class matter at Missoula Montana. Subscription rate, \$3 per year.



Breach of Good Faith

To willingly give personal information to the University in good faith commits the University to use such information with responsibility and restriction—a practice the University has consistently failed to do.

The University has legitimate use for much of the information contained on student IBM cards. A good example of this is the information used by the news service.

Other organizations, such as the religious organizations on campus, should have access to certain cards in order to better fulfill their purposes.

However, many of the files on students are all but open to the public. The persons who use these files have, to start with, an extremely select audience. The information in the files can pin-point an even more select audience. This procedure exposes the students to various kinds of advertising with or without their consent.

The advertising received in the mail takes in a variety of commodities. This does not happen just once in a while but almost every day.

For example, insurance companies take advantage of the files to get to married students and students with so many years of college completed. Some of these salesmen know the student's year in the University, his major, amount of self support, martial status, religious affiliation and address of the student while at the University.

This information could not be attained by the usual sources such as the Grizzly Guide or other student publications.

These practices, that are now permitted, are a breach of the good faith that the students express each quarter in filling out the cards with the personal information.

Close restrictions for use of University files on students should be put in force as soon as possible.

Guest Editorial

Getting Into Harvard

The Christian Science Monitor

That part of Harvard College which still functions in Cambridge rather than Washington is going through one of its periodic wrangles over admissions policy.

The most telling argument to date is one which admits that the remnant left home on the Charles is not as nonchalant about the White House as some Harvardians have tried to make it appear.

Former dean of admissions Wilbur Bender, writing in a recent alumni bulletin, objected to a proposed policy of admitting to Harvard only students placing in the top 1 per cent on nationwide tests. He did so on grounds that this would have denied Harvard educations to Presidents Kennedy, Franklin Roosevelt, and Theodore Roosevelt.

Much as this prospect might appeal to non-Bull Moose Republicans, Dean Bender's argument does make sense.

For there are some qualities of character that the most meticulous tests cannot uncover; some eccentricities of curiosity and intelligence that are simply not cast in a mold. It is often these qualities, late-blooming in many cases, that make the bold leader or inventive researcher. And no great university can afford to dispense with such students, who challenge its faculty and leaven its platoons of more methodical scholars.

Churchill's early school difficulties are well known. Jan Christiaan Smuts also had trouble learning to read until long after other children had. And in one of the more notable cases of mistaken admissions policy, a headmaster threw the great inventor Thomas Edison out of school because he "would never learn."

There is more than a hint in these cases that Harvard would be well advised to go on admitting future Presidents.

Togetherness For Productivity

To the Kaimin:

Every year there seems to evolve a cold war between the Greeks and the independent students. Each side accuses the other of misdemeanors, and for the most part, these accusations are backed only by hot tempers. Although I am an independent, I am for mutual co-existence. I believe each system has its advantages and disadvantages. Each person, being an individual, will have to make up his own mind as to which way of college life best suits him (her).

I believe one of the main reasons why the world is in such a state of unrest is because of these same attitudes. People tend to think that their way is the only way, and anyone who believes contrary to them is wrong.

It is quite obvious that neither system is going to die out in the near future, so let's work toward mutual co-existence. Instead of all this useless fighting, lets put our minds to more productive uses.

JERRY LITZEMAN

Contest Closes With 70 Entries

The Venture essay, short story and poetry contest closed Tuesday with about 70 entries in all divisions.

The deadline will be extended to Friday for those persons who had their essays returned because they were not done in triplicate, according to Patti Jo Shaw, Venture editor.

Judges for the contest are John F. Lawry, assistant professor of philosophy, James D. Allen, of the English department, and Henry Ehpron, Greek scholar.

The cover design for this quarter's Venture was designed by Mary Lou Hoppe, art editor.

Persons wishing to submit material may leave copy at the Venture office above the University Theater.

Monster to Move To Second Floor

The one-eyed monster in the lobby of the Lodge is having its habitat changed.

The Student Union Committee voted Tuesday to move the television set from the lobby to the Lewis and Clark Room. The move will take place as soon as a cable is installed.

The committee felt that the lobby was too cluttered and students made too much noise and disarranged the lobby while watching TV.

Ray Young, ASMSU business manager, said that applications are available at the Lodge desk for persons interested in being business manager of the coming MSU play "Street Scene." He urges that interested persons apply as soon as possible.

Flesh Crawling Theater!

The Visit

TONIGHT—8:15

UNIVERSITY THEATER

GOOD NEWS

Our new Garland sweaters and skirts have arrived. Beautiful new colors: Apricot, Alice blue, Tea rose, Spring green, Pink, Sunflower Flax.

Piccadilly Shop

Wilma Building

Discussion on Health Insurance To Open Farm-Labor Meeting

A panel discussion on health insurance for the aged through Social Security will open the 18th Annual Montana Farmer-Labor Institute meeting Friday at 7:45 p.m. in the Science Hall.

Staff members of the Institute

include Harriet Miller, State Superintendent of Public Instruction; Dr. R. R. Renne, president of MSC; and Gretchen Billings, associate editor of The People's Voice.

The Saturday session will concern a panel on the consumers' gas rate dispute. Sunday the group will discuss the MSU foundation program, University System financing and federal aid to education.

The sessions are sponsored by the Montana State AFL-CIO, Montana Farmers Union with the cooperation of MSU and the MSU Teachers Union. All meetings are open to the public.

Montana to Host Moot Court Trial

Student lawyers will argue a fictitious case before a fictitious U. S. Supreme Court Friday and Saturday.

The case involves an alleged confiscation by a foreign country, of property owned by an American, according to Gardner Cromwell, associate professor of law and adviser to the MSU team.

The University of Washington was slated as the cite of the moot court, Mr. Cromwell said, but stepped aside to let MSU be host as part of the law school's 50th anniversary celebration.

Teams from the Universities of Washington, Idaho, Willamette University, and MSU are entered in the competition.

The winner of the arguments will represent region 14 in the National finals in New York in December.

Rancher to Speak At Meeting Today

Wayne Montgomery, Lima rancher, will speak on "A Republican Looks at the U.N." in the Silver Bow Room at 4 p.m. today.

Montgomery is sponsored by the MSU chapter of Young Americans for Freedom, according to Dalton Pierson, Montana editor of the bi-weekly newsletter of the Young Americans for Freedom.

It is part of the group's public service to bring speakers of all shades of opinion, said Pierson.

The meeting is open for townspeople as well as University students and faculty.

Beach Party

At the New Pool

FRIDAY, Nov. 17—8 to 12 p.m.

See You There—Stag or Drag

SIDE OF BEEF

45¢ LB.

TOP QUALITY CUT and WRAPPED

Dress, poultry, ducks and geese

Wild game in season

SOERSEN LOCKER CO.

Rear of 230 Brooks

Hiway 93 Phone LI 3-5280

STOP AT

Chuck's Texaco

2000 S. Higgins Ph. LI 9-9031

and ask for Chuck, Vern, Doug or Roger

Their labor is easy on your pocket—or do it yourself and have Chuck's Texaco at your convenience.—Be seeing you!

Snow's A & W

on the 93 Strip

PIZZA Is Our Specialty

Orders of \$3 or over delivered FREE within a 2-mile radius. Call LI 9-1697

8-inch pizzas \$.75 to \$1.00
 12-inch pizzas \$1.20 to \$1.75

Wayne Montgomery

Lima Rancher

Will Speak

Thurs., Nov. 16

on

"A REPUBLICAN LOOKS AT THE U. N."

Silver Bow Room
 4 p.m.

PUBLIC INVITED

Sponsored by MSU Chapter of Young Americans for Freedom

MISSOULA CIVIC SYMPHONY

TICKET SALE

AVAILABLE AT

- MSU SCHOOL OF MUSIC
- MUSIC CENTER
- MAUGHAN'S GIFT SHOP

FOR INFORMATION CALL LI 9-7846

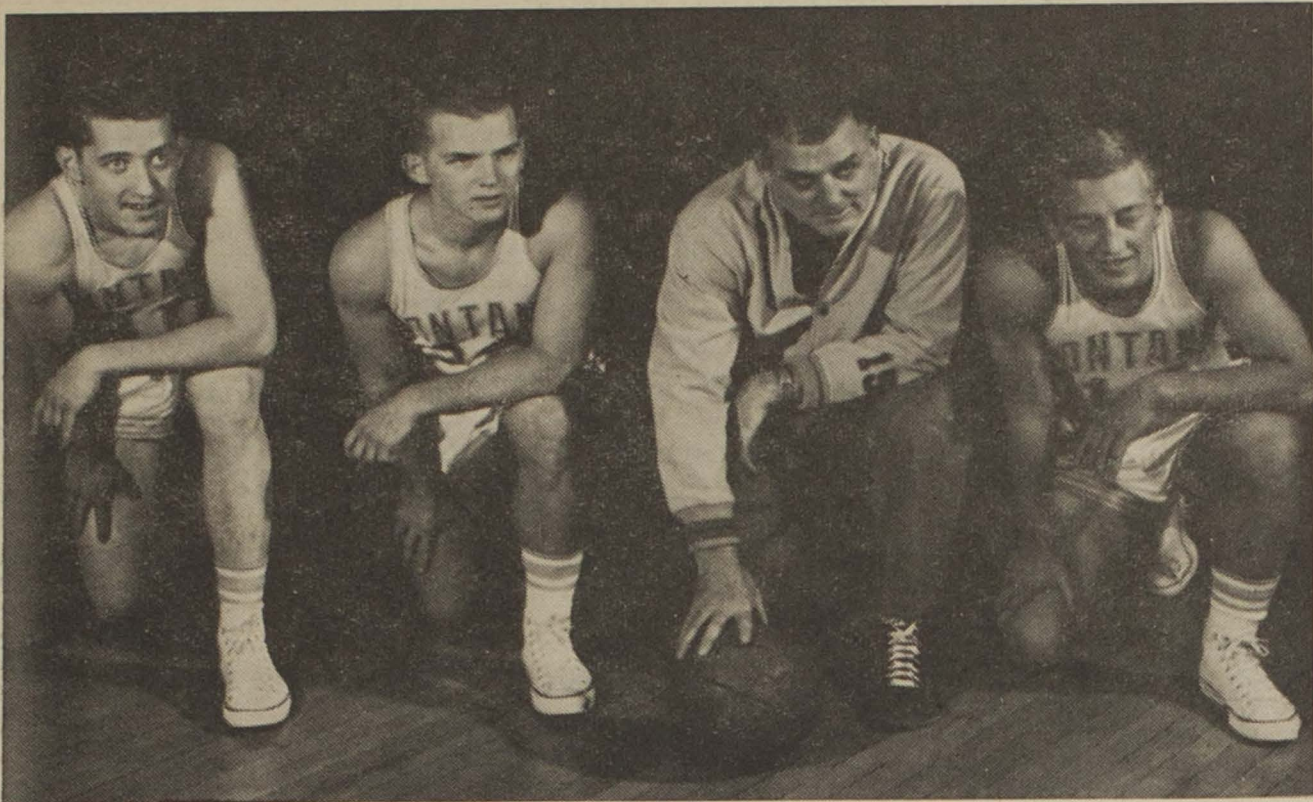
MAIL CHECK TO MISSOULA CIVIC SYMPHONY,
 P.O. BOX 393

Student Season Ticket \$1.75
 Family Season Ticket \$6.00
 Adult Season Ticket \$3.00

First Concert . . . December 3rd

Come In and
 Browse Around
 Barthel Hardware
 130 E. Broadway

Studio Girl
 Cosmetics
 BILLIE ANNE SWARTZ
 Campus Representative
 LI 9-7888



GRIZZLY SENIORS—Three of four seniors on the Montana basketball squad go over strategy for the coming season with Coach Frosty Cox. From left to right are forward Dan Sullivan, guard Butch

Hendricks, Cox and guard Ron Quilling. Not pictured is the other senior member of the cage team, Bob O'Billovich.

Three Montana Football Fields Named After Former Grizzlies

Montana's football teams have produced many greats and among them three names are prominent yet today—stadiums in the Treasure State were named after the former Grizzlies.

Montana State University's Dornblaser Stadium was named after Paul Dornblaser, Chicago, Ill., who was a tackle on Grizzly teams from 1910 to 1913. He died in action in World War I and the MSU stadium was dedicated in his memory.

Naranche Stadium in Butte was named after Eso Naranche who was a fullback on the Grizzly teams from 1939 to 1941. Naranche, who was from Butte, also lost his life in circumstances similar to Dornblaser, but in World War II.

Fred (Cubs) Daylis, Worden, one of Montana's best ends had Daylis Stadium in Billings named after him. Daylis was a member of the Grizzly football teams from

1919 through 1921. Daylis Stadium every fall is the scene of the annual Grizzly and Wyoming Cowboy grid battle.

LET'S GO

SKIING!

WHAT DOES IT COST?
The Pre-Season Rates for a Season Lift Ticket (good on all lifts) at Marshall Ski Area:

	Now	Dec. 1
Adult (single)	17.50	20.00
University Student	15.00	17.50
Family Rate	35.00	40.00

SPECIAL Season Ticket rate to Dec. 1. Hurry and save! Mail your check today to

MARSHALL SKI AREA

Phone 9-0534
4 miles east, 15 minutes from Missoula, Montana

Ebeling, Beaumont Bowl High Games

Corbin, Turner No. 1 and Turner No. 2 emerged as winners in yesterday's bowling games in the WRA intramural tournament.

Sharon Ebeling of Corbin and Bamby Beaumont, Turner, bowled the high game of 169 and Miss Beaumont, hit a 329 for the high two-line series of the day.

Corbin won over Kappa Alpha Theta, 1319 to 986; Turner No. 1 defeated Delta Gamma, 1208 to 1056; and Delta Delta Delta lost to Turner No. 2, 1029 to 1257.

Missoula, Corbin and Turner No. 2 are now tied for first place in the tournament.

Beat The Vandals

NOW SHOWING

The Tempest
LE MANS

BY

Pontiac

4 cyl.—4 speed
Bucket Seats

AT

OLNEY'S

The First
Christian Church
Rev. J. P. Sanders, Pastor
2701 Russell Street

will present an illustrated
public discussion

**Radiation: Its
Effects on Man &
His Environment.**

BY

Dr. C. M. SENER

Department of Zoology

Dr. E. W. PFEIFFER

Department of Zoology

Dr. M. CHESSIN

Department of Botany

ON

Friday, Nov. 17

7:30 p.m.

PUBLIC INVITED—FREE

A nursery will be provided.

For rides call Ext. 381 or LI 2-2077

'Tips Fall In Skyline Statistics After Losing to Montana State

Six Grizzly gridders are ranked in this week's Skyline Conference statistical release of individuals while the MSU team totals shows a drop in two departments—pass offense and pass defense. Utah State again dominates team totals as the Aggies lead in five of six categories and are only led by Wyoming in pass defense.

End Mike Trotter ranks third in pass receiving with 185 yards gained for 14 receptions. Utah's Joe Borich still maintains a commanding lead with 25 receptions for 451 yards.

Grizzly kicker Paul Gustafson has punted 20 times for an average of 36.6 yards for fifth place. Bill Wright, Brigham Young, has displayed the most talented toe in the league this season with a 41.3 yard average for 37 attempts.

Fullback Ron Werba has scored 30 points for sixth place ranking among the scorers. Leading the scoring parade is Tom Larscheid of Utah State who has scored 14 touchdowns and six extra points for a grand total of 90.

Senior-quarterback Bob O'Billovich is eighth among total offense leaders with 449 yards gained via both the air and ground. BYU's Eldon Fortie and Utah State's Mel Montalbo are tied for the lead, both with 715 yards gained.

Halfback Terry Dillon ranks tenth among offense leaders with 408 yards gained and four touchdowns scored.

Halfback Pat Dodson ranks seventh among kickoff return leaders with 127 yards picked up on six carries for an average of 21 yards. He also has scored 24 points on four touchdowns for twelfth place among the scorers.

Montana's pass offense dropped one notch to second behind Utah State who leads with 17 yards gained per game. The Grizzlies passers have completed 44 of 105 pass attempts for a .419 percent-

age and an average of 105 yards gained per game.

MSU's rushing offense again is sixth in the league with only 130 yards gained per game. Utah State leads this category with 281 yards per game.

In the total offense department the Grizzlies again rank fifth with an average of 236 yards. Utah State with 398 yards heads the total offense list.

The Grizzly pass defense suffered last week against MSC and now ranks last in the Skyline with 120 yards allowed per game. Wyoming's defensive unit has allowed the opposition only 78 yards per game through the air.

MSU's rushing defense has allowed the opponents 216 yards per game compared to Utah State who has allowed only 41 yards gained running per game.

Montana's total defense ranks sixth in the conference with an average of 336 yards given up per game. Utah State's defense, which has allowed only 72 points in nine games, has allowed the opposing teams only 135 yards per game.

BLASZEK'S CONOCO

S 4th & Higgins

- BRAKE WORK
- TUNEUPS

See us for Friendly Service!

We Cash Your Checks

Phone 9-4031

Chilly?

try
some
**HOT
Chili**

from

**Fairway
Drive-In**

Highway 93 South

Turner Team Undefeated In WRA Volleyball Play

Turner B stands undefeated in the WRA double-elimination volleyball tournament as of yesterday's games in the Women's Center.

Kappa Alpha Theta was whipped by Turner B, 15 to 5 and 13 to 3, with Linda Wood of Turner scoring a smashing 23 points out of a total of 28. Carol Chakos, scored six of Kappa Alpha Theta's eight points.

Tournament play continues today when Brantly plays Alpha Phi and Turner A plays Synadelphic.

Flesh Crawling Theater!

The Visit

TONIGHT—8:15

UNIVERSITY THEATER



Palmer's Drug

offers you

- Free prescription delivery service
- Open 9-9 weekdays
- 12 noon-6 Sundays
- Call LI 9-8579 for emergency service.
- Russell Stover Candies
- Hallmark Cards

☆ ☆

By the
Southside National Bank

4 is for forty years

of serving you best!

DELANEYS

BUREAU OF
PRINTING

125 East Front St.

TONIGHT at 8:15

AN EVENING
with **BASIL
RATHBONE**

“THE HEIFETZ
OF THE SPOKEN
WORD!”



A NEW DRAMATIC PRESENTATION
from the World of Theatre and Literature!

UNIVERSITY STUDENTS
WITH WILMA DISCOUNT CARDS: **\$1.50**

Tickets On Sale Today, 10 a.m. to Curtain Time, in the
Wilma Box Office!

(Seats are reserved, with locations assigned as to
choiceness on a first-come-first-served basis.)

General Admission: \$2.75 — \$2.25 — \$1.50
Season Tickets (4 attractions): \$8 — \$6.50 — \$5

WILMA THEATRE

U.S. Agencies to Participate In MSU Federal Career Day

Representatives of 18 U.S. government agencies will participate in presenting firsthand information about federal careers and employment opportunities to interested MSU students today.

Walter M. Ward, regional representative of the U.S. Civil Service Commission, will speak on "The Breadth of Federal Employment" in the Yellowstone Room of the Lodge at 2 p.m. Occupational group presentations will be at 1 and 3 p.m. in the Lodge.

Forestry will be discussed in the Yellowstone Room, biological science in Conference Room No. 1, physical science in Committee Room No. 1, business administration and commercial sciences in Conference Room No. 2, education and social sciences in Conference Room No. 3, and health science in Conference Room No. 2.

Robert E. Gorman, director of counseling and guidance, said that students who miss classes to at-

tend Federal Career Day presentations will be given the opportunity to make up course work, but they must secure permission from the teacher beforehand.

M-Book Chairman Applications Due

M-Book Committee chairman applications are being accepted at the Lodge desk, according to Doug Grimm, chairman of Publications Committee.

Applications are due by 4 p.m. Tuesday.

HOLIDAY DRESSES—woolens, brocades, silks and chiffons

Kay's

515 University Ph. 2-2634
Sportswear — Better Dresses

Beach Party

FRIDAY, Nov. 17—8 to 12 p.m.

At the New Pool

See You There—Stag or Drag

Sentinel Position Applications Due

Applications for Sentinel Business Manager will be accepted at the Lodge desk until 4 p.m. Nov. 29, according to Doug Grimm, Publications Board chairman.

Interviews by Publications Board will be Nov. 29.

The vacancy was created by Larry Juelfs whose resignation will be effective Feb. 1. Juelfs said in his letter of resignation to the Board that he wished to spend more time on his studies.

The salary of Sentinel Business Manager is \$40 per month.

INN ADDS SHUFFLE BOARD

Shuffle board has now been added to the list of games at the College Inn.

Other games now offered at the Inn are chess, table tennis, and checkers.

HAM 'n' EGGS
60c

Delicious COFFEE
10c

Served All Day

HANSEN'S
Ice Cream Store

519 South Higgins Avenue

WHO GETS \$3 MILLION?

LOS ANGELES (AP) — When Rozza Mambar, a Polish immigrant, died in 1960 she left nearly a \$3 million estate—a massed through judicious investment in apartment buildings.

Relatives—or people who claim they are—from all over the world have filed depositions contending they are due portions of the estate.

Flesh Crawling Theater!

The Visit

TONIGHT—8:15

UNIVERSITY THEATER

COMPLETE
BRAKE SERVICE

CHECKS CASHED

TUNE UPS

PARTS

SINGER'S
SERVICE STATION

901 South Higgins

GIRLS, Do You Need Extra Christmas Income?

Choose your own hours with Beauty Counselor. Pleasant and dignified. No experience necessary. Dial LI 9-2669

Kaimin Class Ads Pay—Yea, Man!

For Good Home-Cooked Food Downtown

THE HUB CAFE

(Formerly Dorothys)

Across From Missoula Hotel

Try Our Delicious Chinese Chicken or Pork Noodles

also

Italian Spaghetti
Great for Evening Snacks

— OPEN —
6 a.m. to 10 p.m.
Closed Sundays

Classified Ads

"JUSTICE can be bought!" See "THE VISIT" Thurs., Fri., Sat. University Theater. 31ch

TYPING in my home. LI 9-1162. ttc

EXPERT TYPING. LI 3-6515 ttc

TYPING. Barbara Howell. LI 9-2840 ttc

FORESTERS' BALL color photos will be ready at Jon-R Studios, 121 West Front, LI 9-9585, on Tuesday, Nov. 28. 32ch

FREE EUROPEAN SUMMER VACATION. If you are a faculty or staff member and would like a free European camping trip from June 15 to August 2, 1962, contact Walt Lonner, Dean of Students Office, Ext. 416 for particulars. ttc

"THE VISIT" moves of its own astonishing power. Thurs., Fri., Sat., University Theater. 31ch

WANTED: 2 riders to share expenses to Edmonton, Alta., and return for Christmas holidays. Phone LI 3-5046. 30nc

WANTED: Typing, 25 cents per page. Leave at 207 Turner Hall. 30nc

"THE FLESH crawls," says the N. Y. Herald Tribune of "THE VISIT" Thurs., Fri., Sat., University Theater. 31ch

WANTED: Ride to Denver for Christmas. Share driving, expenses. Rm. 52, Craig. 30nc

ANY STUDENTS interested in earning \$1.00 an hour on dance nights at the Lodge to run the coat checking facilities, please contact Dave Rianda, Student Union Program Director at the Lodge or call Ext. 296. 30nc

NEW Singer Sewing Machine Portable Model. Complete. Only \$129.40 or \$134.00 down and \$5.30 per month. Singer Sewing Center, 215 E. Broadway Ph. LI 9-1612. 32c

WANTED: Babysitter for small baby, days Call LI 3-7737. 30nc

FOR SALE: Woman's Bogner ski pants. Were \$50, now \$35. Never worn. Size 10-12. Call LI 3-4506 Evenings. 32c

"THE VISIT" is a stinging drama, a disquieting play. Thurs., Fri., Sat., University Theater. 31ch

MONTANA KAIMIN Classified Ads are low in cost and high in return. Cost is 20¢ per line (five words to a line) for the first insertion and 10¢ per line each consecutive insertion thereafter.

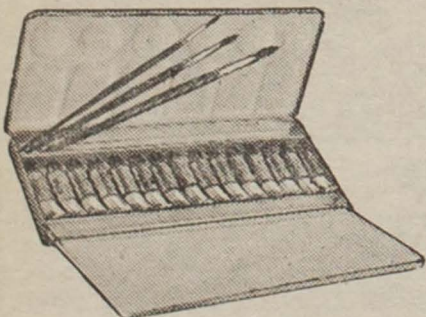
LADIES' Hamilton watch worth \$60. Almost new. Will sell for \$25. Phone LI 9-9655. 33c

RIDE wanted to Great Falls Saturday about noon LI 9-3581. 31nc

WANTED: Ride to Miles City for Thanksgiving Holidays. Les Gapay. Rm. 335, Craig Hall, Ext. 561. 33nc

GUYS: Get your shirts ironed, buttons sewed, shoes shined by Spurs. Saturday morning. Craig Lounge 9 to 12. 31c

GRUMBACHER
FINEST WATER COLORS
No. 2/15
\$8.00



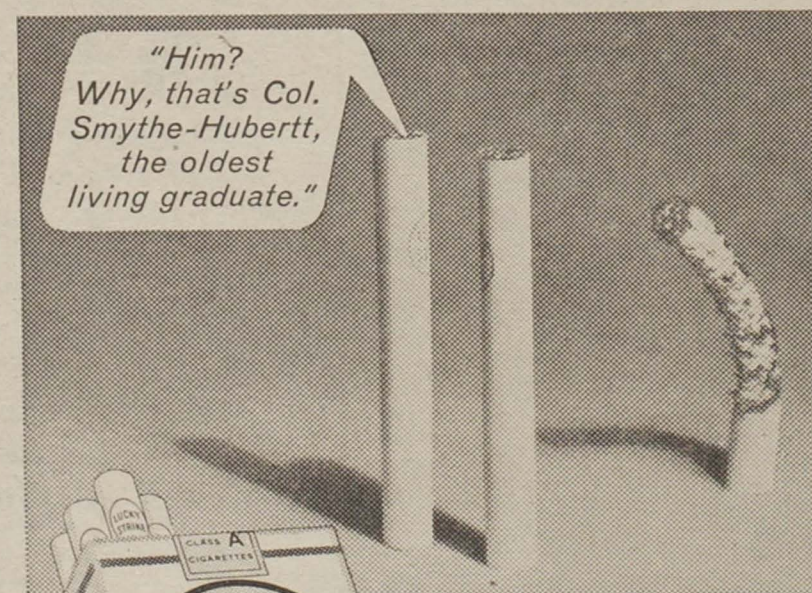
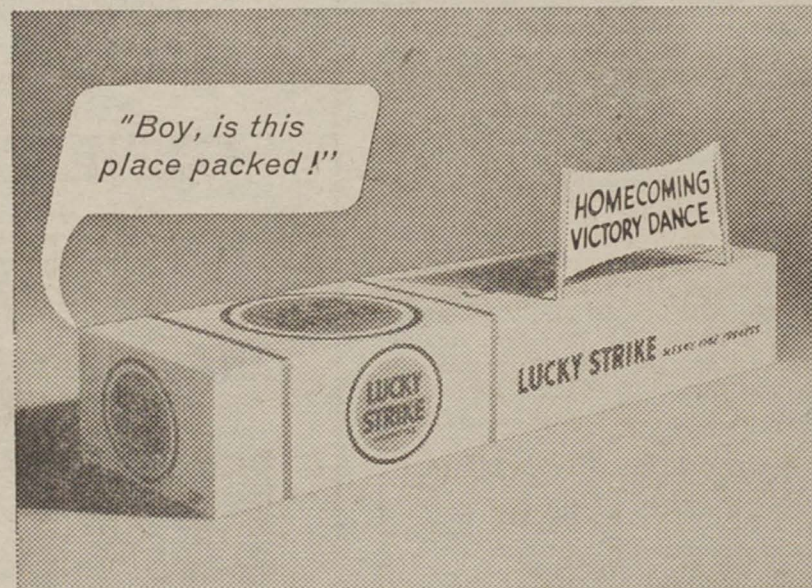
15 tubes of FINEST WATER COLORS; in metal box with hinged cover for mixing — and brushes.

The
Office Supply Co.

115 W. Broadway

LUCKY STRIKE presents: LUCKY TUFFERS

"HOMECOMING WEEKEND"



WHAT DOES AN OLD GRAD LIKE BEST ABOUT HOMECOMING? Next to shaking hands, he likes reminiscing. About fraternity parties, girls, sorority parties, girls, off-campus parties, girls—and, of course, about how great cigarettes used to taste. Fortunately for you, Luckies still do taste great. (So great that college students smoke more of them than any other regular cigarette.) Which shows that the important things in college life stay the same. Parties. Girls. Luckies.

CHANGE TO LUCKIES and get some taste for a change!

Product of The American Tobacco Company — "Tobacco is our middle name"

© A. T. Co.