

University of Montana

ScholarWorks at University of Montana

Montana Kaimin, 1898-present

Associated Students of the University of
Montana (ASUM)

9-30-1965

Montana Kaimin, September 30, 1965

Associated Students of University of Montana

Follow this and additional works at: <https://scholarworks.umt.edu/studentnewspaper>

Let us know how access to this document benefits you.

Recommended Citation

Associated Students of University of Montana, "Montana Kaimin, September 30, 1965" (1965). *Montana Kaimin, 1898-present*. 4184.

<https://scholarworks.umt.edu/studentnewspaper/4184>

This Newspaper is brought to you for free and open access by the Associated Students of the University of Montana (ASUM) at ScholarWorks at University of Montana. It has been accepted for inclusion in Montana Kaimin, 1898-present by an authorized administrator of ScholarWorks at University of Montana. For more information, please contact scholarworks@mso.umt.edu.

U Theatre at 4 p.m.

Secretary Udall to Tell Convo About 'The Not So Quiet Crisis'

Secretary of Interior Stewart Udall will be the main speaker at a public convocation in the University Theater this afternoon at 4 p.m. Mr. Udall's topic will be "The Not So Quiet Crisis."

Mr. Udall arrived this morning

Abbott Resigns; To Be Director In Colorado

Dr. Frank C. Abbott, academic vice president of the University of Montana, has resigned. Effective Nov. 1 he will assume the post of Executive Director of the Colorado Commission on Higher Education.

Dr. Abbott said the decision to leave the university and Missoula had been difficult.

"I admire this excellent university and the imaginative leadership of Pres. Johns. It has been a privilege to serve with him and his predecessor," Abbott said.

As yet no one has been named to replace Dr. Abbott. However, Pres. Robert Johns has asked for recommendations from various university departments.

Before coming to UM in February of 1961, Dr. Abbott had been assistant dean of Bucknell University, staff associate for the American Council on Education, and administrative assistant to the president at Cornell University.

He stated that his new Colorado job will give him a chance to work at a problem that had been of great interest to him for many years: how the public, through its government, may develop a system of higher education that will preserve and transform our democratic society.

Dr. Abbott said he regarded the assignment as "a challenge and an opportunity that I could not turn aside."

Forty-seven Join University Staff

Johns Names New Faculty Members

Forty-seven appointments to the UM faculty effective fall quarter, have been announced by President Robert Johns.

New full-time faculty members, listed by school or department, faculty rank, most recent professional experience, and highest academic degree, are:

Aerospace Studies—Maj. Paul C. Breazeal, associate professor; officer in charge of an areal delivery section, Hickham Air Force Base, Hawaii; B.S., Oregon State University.

Capt. Bruce E. Medley, assistant professor; assistant professor, AFOTC, Murray State Agricultural College; B.S., University of Oklahoma.

Botany—Charles N. Miller, assistant professor; research assistant; University of Michigan Botanical Gardens; Ph. D., University of Michigan.

Business Administration—Hubert R. Brenninger, associate professor; department director, St. Louis University School of Commerce and Finance; M.B.A., University of Texas; certified public accountant.

Jack H. Doty, associate professor; teaching associate, University of Minnesota School of Business Administration; M.B.A., Harvard Graduate School of Business Administration.

John H. Bauerlein, assistant professor; senior scientist, Logistics Research Project, George Washington University; M.A., University of California, Berkeley.

Susan E. Pearson, assistant professor; assistant professor, University of Dayton; M.S., New York University.

and conducted a press conference at 10 a.m. In charge of the press conference were Mr. and Mrs. Lyle Baker, editor and publisher of a Eureka, Calif., publication. Mr. Udall will also address a luncheon meeting of Missoula service clubs.

Arriving in Missoula last night was Sen. Mike Mansfield. Sen. Mansfield and Mr. Udall will participate in a meeting with conservationists this evening. A round table discussion of labor-conservation programs and problems is planned.

Arnold Bolle, dean of the UM School of Forestry, is in charge of local arrangements.

High School Journalists To Meet Here

More than 400 high school journalists are expected to arrive at the University campus tomorrow for the sixteenth annual meeting of the Montana Interscholastic Editorial Association.

The first session will be Friday at 9 a.m. Announcements and welcomes will precede "The Newsmen in the Space Age," discussed by George Remington, Montana Manager of United Press International.

Saturday morning Dean Nathan B. Blumberg will present the Gold Key to an outstanding high school journalist. William Spahr, President of the Montana Association of Journalism Directors, will award a \$150 scholarship to Michael J. Cuffe, Lincoln County High graduate. All-State yearbooks will also be announced and new MIEA officers elected.

Chemistry—Ronald E. Erickson, associate professor; assistant professor, Canisius College; Ph.D., State University of Iowa.

Drama—S. Joseph Nassif, visiting assistant professor; professor, St. Thomas Seminary; M.A., Yale University.

Gayle Cornelison, visiting instructor; M.A., University of Kansas.

Economics—Basil A. Browne, visiting lecturer; instructor, Adelphi Suffolk College; M.A., New York University.

Robert L. Peterson, visiting lecturer; visiting assistant professor, Eastern Washington State College; B.A., University of Montana.

Education—James A. Turman, assistant professor; research fellow, Colorado State College; Ed D., Colorado State College.

English—Donald C. Haberman, assistant professor; assistant professor, Lafayette College; Ph. D., Yale University.

Harvey C. Webster, visiting professor; lecturer, University of Leeds, England; Ph. D., University of Michigan.

Arthur Wills, visiting lecturer; chairman, English Department, University of Alaska; Ph. D., University of Kansas.

Foreign Languages—Domenico Ortisi, associate professor; associate professor, University of Wisconsin; doctor of jurisprudence, University of Catania, Italy; Ph. D., University of California, Berkeley.

Nancy J. Gabbert, instructor; teacher, Great Falls High School; M.A., American University.

Students Say Goodbye Summer, Now Face Livelier University

By TOM BEHAN
Kaimin News Editor

The excitement and hectic pace of Orientation and Rush Week is smoldering to a close, and the seriousness of classes now predominates the campus. But it's not to be said that all's quiet 'round here because a full year of activities crowd the university master calendar.

Speakers, such as Erskine Caldwell, Nov. 2, will appear. Homecoming and the Forester's Ball, Greek Week, and the UM-MSU gridiron clash are waiting in the near future.

And at the same time the university administration has plans and programs of its own. Physical changes on the campus and various administrative decisions will effect the students.

This summer President Robert Johns organized a student group named the President's Committee on the State of the University. Twenty-five upperclass students will meet with him "no less than once a month" to discuss ideas the students and Dr. Johns feel are pertinent. The first meeting was held Tuesday evening.

Many other meetings have been held recently, namely during last week's Orientation Week activities. Roger Barber, chairman, and about 100 other students, acting as group leaders, directed the entering freshman class, over 1700 strong, through various tests, lectures, tours, and finally registration.

The weekend previous to Orientation Week, nearly 125 freshmen and upperclassmen retreated to Seeley Lake for the annual Freshman Camp. Steve Thompson, chairman, reported that the speakers were excellent and that his counselors did a competent job directing the freshmen.

The following weekend, as the

final upperclassmen were drifting into the dorms and living houses, ASUM's recently formed Committee on Lecturers and Convocations presented the Lettermen Saturday evening in the field house. The crowd was small, the sound system much improved and The Lettermen terrific.

As classes began, people looked at the changes summer had brought to the campus. They were looking for other things too—namely parking space. Pres. Johns firmly states, though, that at least 300 parking spaces are open every half hour. Most of the space, he said, is located in the lot north of the field house.

One lot that will be closed for some time to come, is the one behind Brantley Hall. Construction was started there this summer on the UM's new 11 story high-rise dormitory. Work will continue through the year, and Darrell J. Inabnit, executive assistant to the president, has said that the dorm should be completed by Jan. 1967.

Another change noted on campus is the installation of aluminum light posts around the oval and elsewhere across campus.

A further change, this one in classes, is the addition of Saturday sessions to the university schedule. Dr. Johns has predicted that in the near future night classes, as well as a heavier load on Saturday, will be necessary to handle the increased enrollment.

Perhaps the biggest change, but one that will be some time arriving, was Pres. John's Sept. 23rd proposal to the Missoula Chamber of Commerce. He urged that the city and the university act jointly to establish a research park south of the university and a common athletic complex near Ft. Missoula.

The research center would be used for strictly private work that

would tie in closely with university projects. The proposed athletic area would include a football stadium, to be used by the city and the university, basketball and tennis courts, a hockey rink, a swimming pool, a track with stands, a baseball field with stands and parking for 5,000 cars.

In connection with athletics, Pres. Johns has said that he has put more money into athletics than any president before him, and if university teams don't start winning, coaching changes will be made.

It will be an interesting year.

Panel Discussion, Dance Kick Off Greek Week at 8

Greek Week begins officially today with a panel discussion "Pros and Cons of Greek Life" in the Music Recital Hall at 8 p.m.

Lt. Col. Robert Velde, chairman and professor of air science, and John Wicks, assistant professor of economics, will speak for the Greeks. Mrs. Cynthia Schuster, associate professor of philosophy, and another faculty member not yet announced will speak against the Greek system. John Ross, ASUM president, will moderate the discussion.

Sorority and fraternity members will display their talents Friday afternoon in the Lodge in a presentation of "Greeks at Four." Greeks and non-Greeks are invited to attend a dance Friday in the Yellowstone Room of the Lodge at 9 p.m. with music by the Mark IV's. There will be no charge for the dance.

Saturday morning from 10 to 12 sororities and fraternities will have open house.

University of California, Berkeley.

Law—John J. Tonnsen Jr., instructor; clerk, Montana State Supreme Court; LL. B., University of Montana.

Library—Donald P. Chvatal, assistant professor (assistant reference librarian) humanities reference professor (assistant reference librarian, Florida Atlantic University; M.L.S., University of Illinois.

William Newman, assistant professor (assistant reference librarian); serials cataloger, Cornell University Libraries; M.S.L.S., Columbia University.

Suzanne M. Ward, instructor (assistant reference librarian); B.A., Indiana University.

Mathematics—Richard E. Johnson, professor; professor, University of Rochester; Ph. D., University of Wisconsin.

Edmund Geyer, instructor; graduate assistant, Western Washington State College; M.A., Western Washington State College.

Edward Wadsworth, visiting instructor; National Science Foundation teaching assistant, University of Montana; M.A., University of Montana.

Military Science—Maj. Charles M. Friedlein, associate professor; 318th U.S. Army Security Agency Battalion, Germany; B.S., University of Dubuque.

Music—Dwight V. Overmyer, instructor; graduate work, University of Southern California; M.A., Long Beach State College.

Physics—John N. Bradford, assistant professor; instructor, Iowa State University; Ph. D., Iowa State University.

Political Science—Richard A. Chapman, instructor; teaching assistant, University of California at Los Angeles; M.A., San Jose State College.

Psychology—Charles K. Allen, assistant professor; National Institutes of Health postdoctoral fellow, Pennsylvania State University; Ph. D., Ohio State University.

Joseph W. Jennings, assistant professor; instructor, Michigan State University; Ph. D., Michigan State University.

Odin C. Vick, assistant professor; assistant professor, Eastern Michigan University; Ph. D., Pennsylvania State University.

Sociology, Anthropology and Social Welfare—Frank B. Bessac, associate professor (anthropology); assistant professor, Lawrence College; Ph. D., University of Wisconsin.

Philip M. Hobler, instructor; field work in Egypt and Libyan Desert as adjunct professor, Anthropology Research Laboratory, Southern Methodist University; M.A., University of Arizona.

Speech—Edward D. Steele, chairman and associate professor; associate professor, Humboldt State College; Ph. D., Stanford University.

Zoology—Edwin W. House, visiting assistant professor; North Dakota Heart Association fellow, University of North Dakota; Ph. D., University of North Dakota.

George Singer, assistant professor; research assistant, Oregon State University; Ph. D., Oregon State University.

To All the Fine New Flesh

(Series: Helping Freshman Grow)

Dear Freshmen,

This is your kindly, warm and always receptive editor, David M. Rorvik, welcoming you, through the sanitary facilities of the Montana Kaimin, to our very fine University.

We at Montana Kaimin CARE. (Without really saying so, we give a). In short, we want all of you to adjust, communicate and empathize with a maximum of ease and a minimum of that unpleasantness that is so truly untoward.

Some of you, of course, will acquire before others the ability to mix an acceptable stumplifter, to say "this is true" sincerely, to smoke continentally, to **feel** fully, if not redundantly, and to advocate mainstream responsibility at home and abroad.

This is unfortunate: we want too much for all of you to progress at the same rate, in the manner so fondly envisioned by the mothers and fathers of the American Revolution. But, if you cannot somehow reconcile apparent inequities with the American Way, we recommend the Theatre of the Absurd, the comforts of modern existentialism, Chinese politics and the Heidelberg—inversely.

And, when things get really black, please remember: nearly all of us have in common our bilateral symmetry and some very fine frontal lobes. (Those unfortunate few who lack even the latter basic prerequisite of the College Experience, it is suggested, might instead find themselves, so to speak, in Viet Nam.)

Meanwhile, it will be the intention of this publication to relieve you of nagging doubts, petty fears and all the little things that stand between you and the Happiness to which your high schools have accustomed you.

The Montana Kaimin is your paper. When you lack friends, read it; when you're frightened, cover yourself with it; when you're angry, write to it; when you're out of Northern, don't hesitate. Your contingency is our opportunity.

We're multi-purpose and never less than two-ply.

Coming in the Kaimin

- **VIRGINIA FRIBBISH**—pornographer, social critic, woman among girls. Yours weekly.
- **CONRAD**—Pulitzer-Prize-winning editorial cartoonist. Every day.
- **FEIFFER**—the nation's leading satirical cartoonist. Weekly.
- **PAUL GOODMAN**—author of "Growing Up Absurd," "Compulsory Mis-Education," "The Community of Scholars" and other psycho-sociological sputum. Ours fortnightly.
- **HOWLETT**—startling new drama critic.
- **BRAIDA**—stunning new society columnist.
- **ASSOCIATED PRESS**—daily.
- **AND RORVIK**, Montana's leftwardmost editor, Nichols, Montana's most eccentric managing editor, and an extensive array of dirty old men and innocent young things. Regularly.

Policy on Letters to the Editor

Letters to the editor should generally be no longer than 400 words, preferably typed and triple spaced, with the writer's full name, major, address and phone number listed. They should be brought to the Kaimin office in Room 206 of the Journalism Building by 2 p.m. the day before publication or mailed to the editor in care of the Kaimin.

Letters must be within the limits of libel and obscenity and should amount to more than a series of name calling. The editor reserves the right to edit or reject any letter.

MONTANA KAIMIN

"Expressing 67 Years of Editorial Freedom"

Dave Rorvik	Editor	Pat Kennedy	Assoc. Editor
Keith Nichols	Mng. Editor	Cheryl Hutchinson	Assoc. Editor
Karalee Stewart	Bus. Mgr.	Ed Mendel	Assoc. Editor
Bill Schwanke	Sports Editor	Kay Morton	Assoc. Editor
Tom Behan	News Editor	Paula Latham	Asst. Bus. Mgr.
Todd Brandoff	Photographer	Prof. E. B. Dugan	Adviser

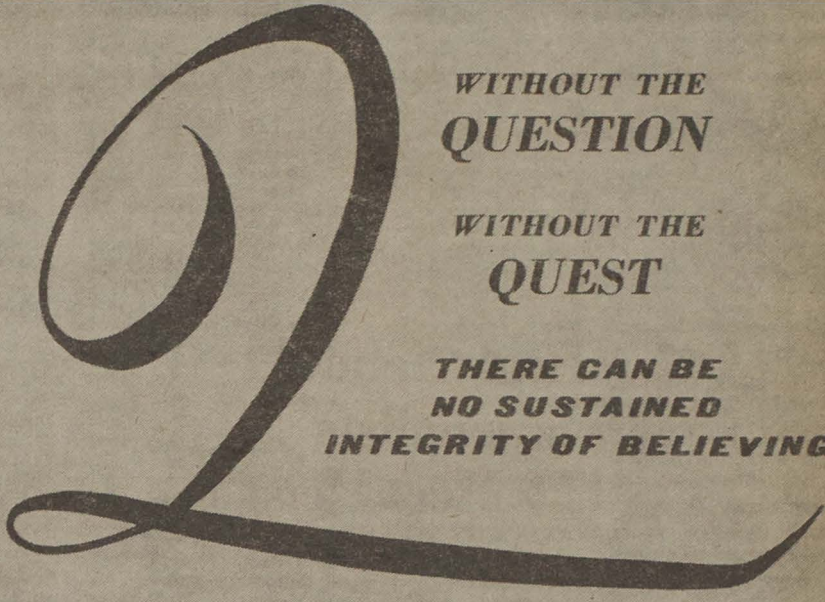


The name Kaimin is derived from the original Salish Indian word and means "something written" or "a message"

Published every Tuesday, Wednesday, Thursday and Friday of the school year by the Associated Students of University of Montana. The school of Journalism utilizes the Kaimin for practice courses, but assumes no responsibility and exercises no control over policy or content. ASMSU publications are responsible to Publications Board, a committee of Central Board. Represented for national advertising by National Advertising Service, New York, Chicago, Boston, Los Angeles, San Francisco. Entered as second-class matter at Missoula, Montana. Subscription rate, \$5 per year.

the
**Ecumenical
Institute**

SERVING THE UNIVERSITY OF MONTANA AT MISSOULA



**WITHOUT THE
QUESTION**

**WITHOUT THE
QUEST**

**THERE CAN BE
NO SUSTAINED
INTEGRITY OF BELIEVING**

THE ECUMENICAL INSTITUTE is a joint venture in faith among the Wesley, U.C.C.F. and Lutheran Campus Foundations. The INSTITUTE seminars are geared to help you think through your Christian faith. If you have questions about your faith, if you find difficulty in sharing it with others, if you wonder if you have Christian faith at all, you will want to continue your quest through relevant study and discussion.

Courses led by the Campus astors are offered at varying levels of subject matter to meet your needs. Meeting times are arranged to fit the demands of your university schedule. Plan to let one of the following study groups help you in your quest.

INTRODUCTORY DIVISION:

- 101—*Instead of Death*
- 111—*The Mighty Acts of God*

INTERMEDIATE DIVISION:

- 201—*Biblical Theology*
- 211—*Christian Ethics*

ADVANCED DIVISION:

- 301—*Is Reality a Rational Structure?*
(The systematic theology of Tillich)
- 311—*Sartre, Philosopher or Fraud?*

Fall Quarter Seminars begin: Tuesday, October 3rd

Fill out enrollment form and give to any Campus Pastor

- Bill Kliber, Wesley
- Bill Hassler, U.C.C.F.
- John Jones, Lutheran

REGISTRATION FORM

Note:

1. A \$2.00 registration fee is charged to cover the cost of study materials for each seminar.
 2. Seminars will be offered on Tuesday, Wednesday, or Thursday at a time suitable to the majority of those registered.
 3. All seminars will meet at the LUTHERAN CENTER.
- ☛ INTRODUCTORY DIVISION seminars will also be offered on Tuesday (101) and Wednesday (111) evenings at 8:30 p.m.

Course Number: _____ Title: _____

Your Name: _____

Address: _____ Phone: _____

Preferred Time: 1) _____ 2) _____ 3) _____

Day: _____

Fee Paid: \$ _____



Sportlight

by

Bill Schwanke

Before diving headon into the 1965-66 school year and the sports included therein, we should recap several events concerning UM sports which occurred during the summer.

Doug Brown put the University on the map with his outstanding performances in the distance events at the NCAA National Collegiate Championships in Berkeley, Calif. in mid-June. Brown captured the national six-mile run crown with a time of 13:29.0. The Red Lodge senior also took first place in the three-mile run at 27:59.2.

Campbell Heads Moundmen
Milt Schwenk, assistant football coach, head freshman football coach and head baseball coach, resigned from the University athletic staff to assume a position as sports director for a Missoula radio station. Schwenk was replaced during the summer by A. C. (Whitie) Campbell, former University of Miami football star and coach.

With the first home football game slated for Saturday against Idaho State, the Grizzlies are sporting a 0-2 record following pre-school losses to Utah and South Dakota. The Tips, although loaded with sophomores, gave the Utah Redskins a real battle before dropping a 28-13 decision in Salt Lake City Sept. 11. Montana trailed 21-0 going into the second half, but an alert defense and a surprisingly strong offense allowed the Tips to outscore the Utes 13-7 in the final half.

Second Loss Disappointing
Montana's loss to South Dakota in Billings Sept. 18 was a major disappointment. The Grizzlies were strong favorites to win the game, but blew several scoring chances, including three in the first quarter.

The Tips scored easily, perhaps too easily, in the first period after stopping South Dakota's first offensive attempt. Sophomore quarterback Jim Searles, who performed like a veteran in both of the opening games, fired a 40-yard pass to speedy tailback Willie Jones on the Grizzlies' second offensive play of the game.

Fumbles Damaging
UM lost of a total of five fumbles during the game, all of which were damaging. Perhaps most costly was a fumble on the Grizzly seven yard-line by fullback Merle Adams, which allowed South Dakota to tie the score at 7-7.

In the fourth quarter, Jones broke away on a 49-yard jaunt for his second TD, eluding several would-be tacklers. Tackle Wayne Becker, who missed two field goals during the game, kicked his second extra point, and the Grizzlies had a seemingly safe 14-7 lead with less than two minutes remaining.

Penalty Decisive
The downfall was not long in coming. After defensive end Joe Fiala had thrown Coyote quarter-

back for a big loss, Doug McDonald was called for piling, and South Dakota had a first down on the Montana 36 yard-line.

Rich Meyers came in for his only play for South Dakota at quarterback and tossed a fluke touchdown pass. Two Montana defenders got their hands on the ball before it fell into the hands of the waiting receiver.

A successful attempt at the two-point conversion gave the Coyotes a 15-14 victory in a game that Montana should have won with ease.

Weaknesses Noted

The two opening games pointed out many weaknesses to Coach Hugh Davidson and his staff, and the team has had two weeks to iron out rough spots.

Potentially, Montana has one of the best football teams the University has seen in the past decade, but it will take a victory against Idaho State Saturday to realize this potential.

Ft. Missoula Site Promoted

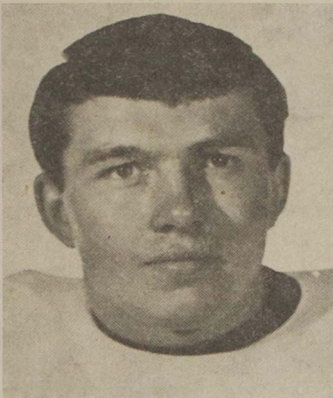
UM President Robert Johns, in a speech given in Missoula, continued to promote Fort Missoula as the best site for a new football stadium. The stadium, which Johns said would be part of a 68-acre athletic complex, would be the world's first stadium made entirely of wood products.

The entire complex would include parking for 5,000 cars, basketball and tennis courts, a hockey rink, swimming pool, practice field, a track with stands and a baseball diamond with stands.

Dr. Johns has indicated that the University Golf Course is the second logical site for a football stadium if the Fort Missoula venture doesn't pan out.

Three Grizzlies Rank in Big Sky Stats

Three University of Montana football players are ranked in Big Sky Athletic Conference statistics after completion of two games.



PAUL CONNELLY

Tailback Paul Connelly, 165-pound senior from Muskegon, Mich., is the pacesetter in individual rushing. Connelly has picked up 198 yards in 30 carries for a 6.6 average. Montana State's Jim Tuss is second with a 6.0 average.

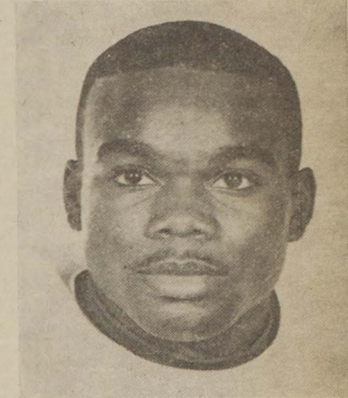
Connelly is ranked fourth in total offense behind Foruria of Idaho, Neves of Idaho State, and Jones of Weber State. Foruria has picked up 264 total yards, Neves 252 and Jones 202.

Another Grizzly tailback, Willie Jones of Monroe, Michigan, ranks third in punt returns. The little sophomore speedster has returned three punts for 19 yards, a 6.3 average.

Billings junior Warren Hill is ranked in kickoff returns for UM. Hill made a fine return of 46 yards in Montana's losing effort against South Dakota.

In team statistics, UM ranks fourth in the conference in total

yards with 527. Idaho State leads the pack with 646 yards, followed by Weber State with 625 yards and MSU with 547. All Big Sky teams have played two games.



WILLIE JONES

You can date for less in Lee Leens.

(With the authority of the Leen-look, you can convince her that going out... is out.)



Slide into a pair of Lee Leens. Take along your banjo. You'll have a captive audience when she sees you in those low-riding, hip-hugging Leens. (They really do something for your shoulders.) Those arrow-narrow legs give you dash she never suspected, and those git-along pockets show you're a stickler for detail. Great way to date; no pain in the wallet. But, you need the authority of Lee Leens to get away with it. Shown, Lee Leens in Lastic Stretch Denim, a blend of 75% cotton and 25% nylon. Sanforized. In Wheat, Faded Blue, Loden and Blue Denim. \$6.98. Other Leens from \$4.98 to \$6.98.

Lee Leens®

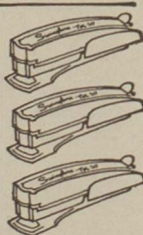
H. D. Lee Company, Inc., Kansas City 41, Mo.

Swingline PUZZLEMENTS



[1] Do they have a 4th of July in England? (Answers below)

[2] Take two TOT Staplers from three TOT Staplers, and what do you have?



This is the **Swingline Tot Stapler**



98¢

(Including 1000 staples) Larger size CUB Desk Stapler only \$1.49

No bigger than a pack of gum—but packs the punch of a big deal! Refills available everywhere. Unconditionally guaranteed. Made in U.S.A. Get it at any stationery, variety, book store!

Swingline® INC.

Long Island City, N.Y. 11101

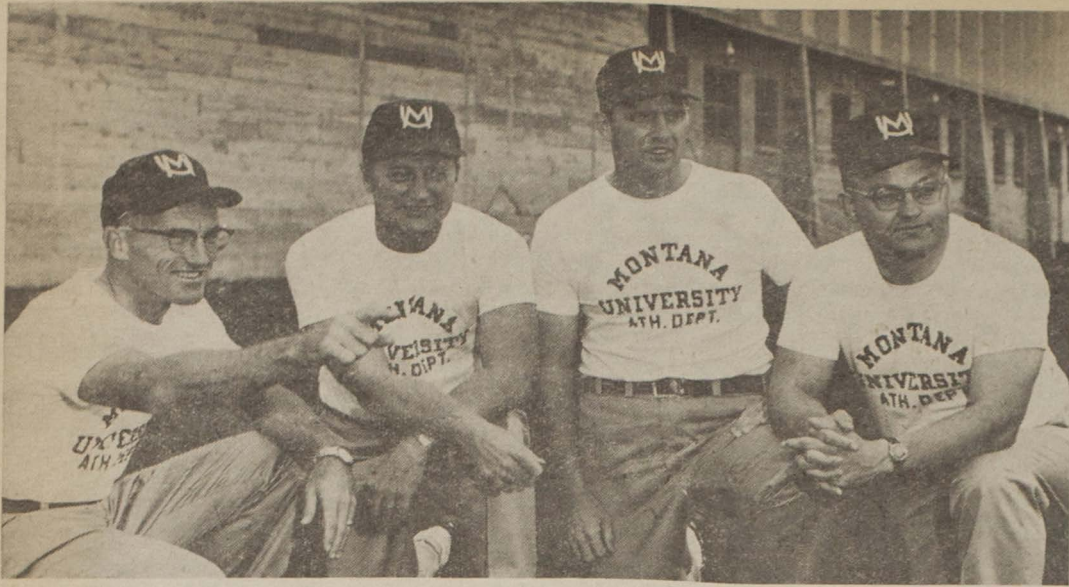
ANSWERS 1. Sure. But they don't celebrate Independence Day! 2. The two TOT Staplers you took—which is not a bad idea, because if there is one thing better than having one TOT Stapler, it's having two of them! They're so handy and useful!

GIT READY FOR THE FORESTERS' BALL



COMING

Nov. 12-13



POINTING TO A WINNING SEASON—Montana's four-man coaching staff, including one new addition, appears to be pointing toward a winning season. From left, they are Hugh Davidson, head coach in his second season; Whitie Campbell, head frosh football coach and head baseball coach who

replaced Milt Schwenk July 15; Dave Kragthorpe, line coach beginning his second season; and, Tommy Kingsford, backfield coach and head wrestling coach, who joined the staff last spring. All have been working hard since the Grizzlies started practice late in August.

Campbell Joins U Athletic Staff

A. C. (Whitie) Campbell, former University of Miami assistant football coach, was selected this summer to replace Milt Schwenk as University of Montana head baseball and freshman football coach.

Campbell will also assist Head Coach Hugh Davidson with the varsity.

Schwenk resigned from the Grizzly coaching staff to take a position with a local broadcast-

ing company as a sports announcer. Campbell joined the staff July 15.

In five seasons as head freshman coach at Miami, his frosh teams were 12-3 in the Southeastern Conference. He then moved up to the varsity as defensive coach for two years.

Campbell's baseball team compiled a 114-33 record in five seasons.

Before joining the University

of Miami staff, he coached five years at Miami Jackson High School as head football and basketball coach.

Campbell earned 12 letters in football, basketball and baseball at Miami from 1946-1950, the highest number of letters awarded a Miami athlete in modern history. He was captain of his squad in each sport during his senior year.

His national honors include being selected to the Associated Press All-American football team as an alternate halfback, and being chosen to the All-American softball team twice. The new Montana coach was also a member of the all-Florida intercollegiate basketball squad.

Before coming to Montana, Campbell was in business at Reno, Nevada, for two years.

Campbell had praise for the University of Montana. "The people here are very nice, congenial and friendly. Everyone is willing to take time out and help you," the new mentor said.

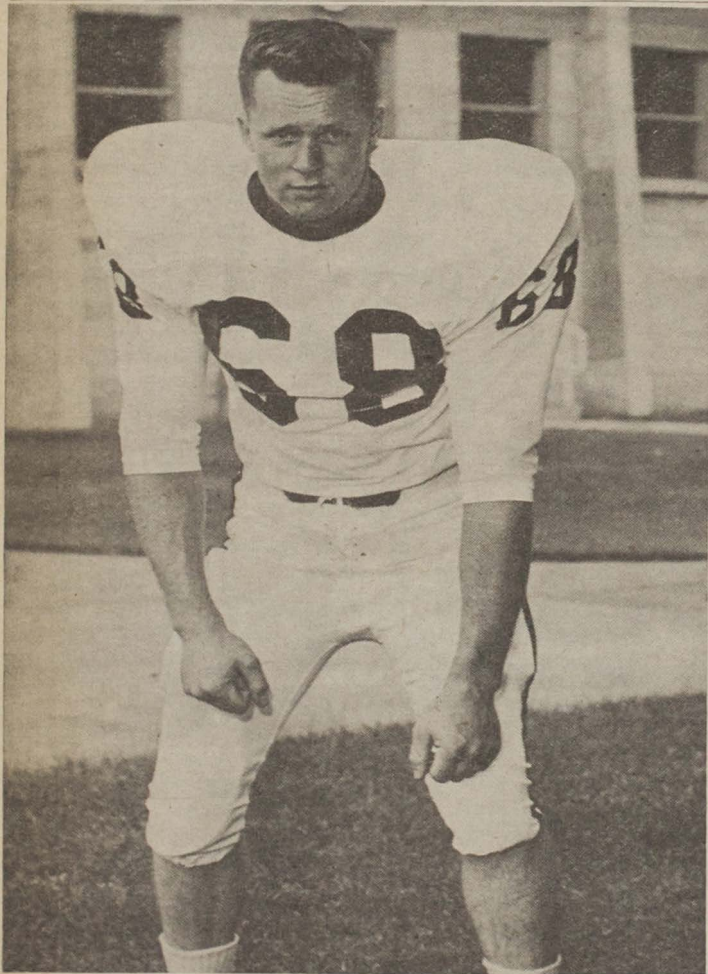
He also expressed admiration for the UM campus and its general atmosphere.

Cub Positions Still Wide Open

The University of Montana freshman football roster will be announced Monday, according to new Head Freshman Coach Whitie Campbell. There are 48 men out, including 19 on scholarship.

Campbell said he has no idea of the Cubs' strength, since they began practice only Monday, and all positions are still "wide open." He said the cut will be Monday.

The first game will be at Havre against Northern Montana College Oct. 16. The three remaining games will be against Montana State University, here, Oct. 22; University of Idaho, there, Oct. 29; and Idaho State University, there, Nov. 5.



A BEAR ON DEFENSE—Mike Smith, one of several junior college transfers playing Grizzly football this season, was voted the outstanding Montana defensive player after the Grizzlies met South Dakota in Billings Sept. 18. Smith made 16 tackles from his line-backer position.

Managers Needed

Freshman and varsity football squads are in need of managers, and those interested in the job should contact Tom Kingsford, varsity backfield coach, or Whitie Campbell, freshman coach, in the Athletic Department of the Field House.

Kingsford said that the only qualifications for the jobs are that the interested party be a sophomore, junior or senior interested in athletics.

G.B.D. Irwin Rum
B.B.B.
Scala Club
Comoy
Guildhall
Everyman
Dr. Grabow
Scandia
Rochford
Kriswell
Imperial
Civic

PIPES

Kaywoodie
Stercrest
Lane
Ropp
Yellowbowl
Derby
G.B.D. City Deluxe
Dunhill
Pioneer
Bamboo
Thornycroft
Medico

THE BELL PIPE SHOPPE

225 EAST BROADWAY—Opposite Post Office

No Prizes Offered

Prognosticators to Begin Competition Tomorrow

Five UM students who have voiced interest in a football prediction column will go to work tomorrow when "Pigskin Picks" appears in the Kaimin.

Three of the competitors have had previous experience in predicting the outcome of college football games.

Bill Walter, past Kaimin sports editor and a graduate student at UM, sported a 49-28-3 record last fall for second place and a 63.6 percentage of right guesses. Walter is from Bozeman.

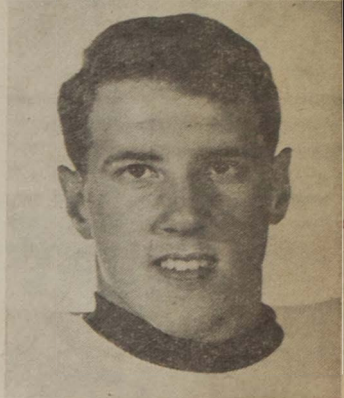
Howard Schwartz, Brooklyn senior in journalism, came out with a 59.7 percentage and a 46-31-3 record, and hopes to better his record this year.

The third experienced prognosticator, Anaconda's Stan Stohr, posted a 42-35-2 record for a 54.5 percentage. Stohr is also a senior in journalism.

The two new faces include Chuck Bultman, senior from Pennsylvania, and Bill Schwanke,

Missoula junior and Kaimin sports editor.

The method used in the column will differ somewhat from that of last year. Rather than attempting to pick the exact final scores of the games, the contestants will name the winning team and the number of points by which it is expected to win.



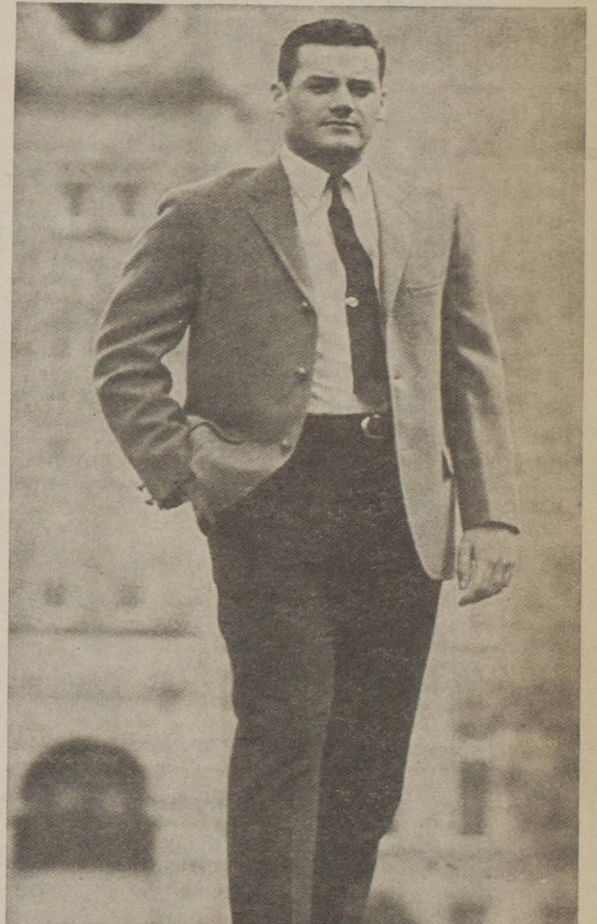
SOPHOMORE QUARTERBACK—Certain to be one of the outstanding sophomores on the UM football team is quarterback Jim Searles, 6-1, 175, from Missoula.

TRAINEES WELCOME

Any journalism majors who think they might be interested in applying for Kaimin sports editor in the spring are invited to come to the Kaimin office any evening after 7 p.m., according to Bill Schwanke, present sports editor.

FOR THOSE MEN

NEW AT THE U—



WELCOME!



FROM
The FIRST With the NEWEST
In Missoula!

527 N. HIGGINS
MISSOULA

Open Every Friday 'Til 9 P.M.



GET THE QUARTERBACK—Joe Fiala, junior transfer from Visalia, Calif., is one man to watch on the Grizzly defensive squad Saturday when Montana meets Idaho State. Fiala has put hard rushes on opposing quarterbacks in Grizzly games against Utah and South Dakota.

Grizzlies Lose Two Contests, Prep for Idaho State Bengals

By **BILL SCHWANKE**
Kaimin Sports Editor

The University of Montana football team is much improved over last season and should be able to put together a winning season.

This was the feeling of many persons who had watched the Tips work out in preseason practice sessions. But following the team's second loss to South Dakota in Billings two weeks ago, doubt began to creep in as in past years.

The Grizzlies opened Sept. 11 in Salt Lake City against the Utah Redskins. Montana had not beaten Utah in 10 seasons until that time, and the Utes succeeded in stretching that number to 11.

Montana came out of the game with what is often called a moral victory, losing 28-13 after outplaying the Utes in the second half. The game left many cocky Utah sportswriters somewhat shaky.

Coach Hugh Davidson was generally pleased with the Utah contest, and indicated that the entire squad, especially the sophomores seeing their first collegiate action, performed well for the first game of the season.

One of the most pleasant surprises was sophomore quarterback Jim Searles, who, according to Davidson, ran the squad like a veteran. Searles called the entire game with the exception of three plays. Searles performed especially well on the option play, picking up 34 yards rushing in the first half.

Tailback Paul Connelly got off the best running play of the game. After bouncing off three Utah tacklers, Connelly reversed his field for a 50-yard jaunt before being stopped just shy of a touchdown.

The Montana defense tightened up in the second half after a shaky start. Wayne Harrington and Mike Smith, linebackers, made many

key tackles. Pass defense also improved as the game progressed.

One week later, the Grizzlies met South Dakota's Coyotes in a game which saw Montana favored to win. The Coyotes capitalized on Montana mistakes, mostly offensive, to squeak by 15-14.

Searles performed well again at quarterback, although not as well as in the Utah contest. Tailback Willie Jones proved his value, scoring on a 40-yard pass play in the first quarter and again on a 49-yard run in the fourth frame.

Mike Smith and Joe Fiala were defensive stalwarts for the Tips in the South Dakota game. Fiala threw the South Dakota quarterback for several losses, while Smith collected 16 tackles during the afternoon.

A fluke pass, caught after being deflected by two Grizzly defenders, and a two-point conversion, accounted for South Dakota's margin of victory.

The Montana squad has had two weeks of practice since the loss to South Dakota, and Coach Davidson

has made several changes in preparation for the Idaho State game Saturday.

Greg Hanson, previously a split end, has been moved to tight end, and will probably see more action on defense, according to Davidson.

Junior Roger Clemens has shifted from tight end to swing tackle, but will still be an eligible receiver on some plays.

Another junior, Terry Bergren, who did not play in the first two contests because of a leg injury, has moved from wingback to split end.

Fullback Larry Petty is slated for offensive duty after playing only on defense against Utah and South Dakota.

Following the game with Idaho State, Montana will complete the following schedule: Oct. 9, Weber State at Ogden; Oct. 16, Utah State at Logan; Oct. 23, Idaho at Missoula; Oct. 30, Pacific at Missoula; Nov. 6, Montana State at Bozeman; Nov. 13, Western Michigan at Kalamazoo; Nov. 25, Portland State College at Portland.

JIM (the cleanest man in town) THANE SAYS



Welcome back students from the staff and management of the Drive-In Cleaners where we combine top quality work with fast efficient service. Always ready to serve you with our famous "NO SHRINK — NO STINK" process of dry cleaning, we feature free pickup and delivery daily to all dormitories; to fraternities and sororities on request. Simply give us a call at 543-3131 where it's IN AT TEN DIRTY, CLEAN AT TWO-THIRTY, and always remember

If Your Clothes Aren't Becoming To You, They Should Be Coming To Us

Jim Thane's Drive-In Cleaners

Between Second and Third on Orange—Dial 543-3131

Tennis Meeting Scheduled

An important meeting for all men interested in varsity tennis is scheduled for Tuesday, Oct. 5 at 4 p.m. in Room 107 of the Women's Center, according to Brian Sharkey, tennis coach. New men are invited to attend

the meeting, at which scheduling and eligibility will be discussed. Anyone who is interested but cannot attend the meeting as scheduled should notify Coach Sharkey in Room 111 of the Women's Center.

Students—

HEAD FOR HENRY'S

Henry's Has Missoula's Most Complete Drive-In Menu

Sea Food Items

	Dinner	Sandwich
Fish	79¢	29¢
Shrimp	89¢	35¢
Scallops	99¢	
Oysters	\$1.19	

Sandwiches

Burgers	15¢
Double Burger	29¢
Cheese Burger	25¢
Hot Dog	25¢
Tacos	29¢
Whopper	59¢
<small>¼ Lb. Pork Steak Sandwich</small>	
Turkey	35¢
Ham	35¢

Dinner

Steak Sandwich	73¢
Chicken Dinner	89¢
French Fries	15¢
½ lb.	35¢
1 lb.	65¢
Potato Chips	10¢
Pies	15¢



OWNERS

Wilbert and Madeline Hermes

HENRY'S

HOME OF THE BIGGER AND BETTER 15-CENTER

ON THE 93 STRIP

We Serve All Popular Drinks

Deans Announce Spring Quarter Honor Roll

The following list contains the students who were eligible for the Honor Roll for Spring Quarter, 1965. To be eligible for the Honor Roll a student must either have a minimum of fifty-four grade points with an index of three, or a minimum of forty grade points with an index of three and one-half. No student is eligible if he has an "F" on his current record.

Students who maintained a straight 4.00 average are listed in boldface type.

Dasinger, Douglas Delano, Wolf Point; Keller, Paul Keith, Helena; Roybal, Jesse Dwayne, Billings; Williams, Shelton Cross, Libby; Achuff, Peter Lewis, Caruthersville, Mo.; Adams, Colleen, Fairfield; Adams, Elton Joe, Winnett; Adamson, Christine Esther, Missoula; Adolph, Kathryn, Billings;

Allison, David Blair, Edgewater, N.J.; Allison, James Parkhurst, Northwood, Iowa; Allison, John Terry, Hamilton; Anderson, Terry Lee, Bridger; Andrews, Russell Robert, Fairfield; Ar buckle, Margaret Evelyn, Alzada; Argersinger, William John, Lawndale, Kan.; Austin, David Jan, Great Falls; Bachman, Elizabeth A., Fort Benton; Bailey, Helen Jane, Kalispell; Baker, Mary Alice, Spokane, Wash.; Balogh, Bela Alexander, Budapest, Hungary; Bandy, George Raymond, Havre; Barce, George Wallace, Kalispell;

Bernard, Joseph James, Spenard, Alaska; Barr, Wendy, Thomaston, Conn.; Barron, Steven Kirk, Cut Bank; Barrows, Martha Lynn, Conrad; Bels, James Ray, Missoula; Behan, Terry William, Grayslake, Ill.; Beau-dette, Stanley George, Anaconda; Beavers, Gordon Richard, Calgary, Alberta, Canada; Beck, Mary Margaret, Missoula; Berry, James Robert, Wolf Point; Bennett, Robert A., Bremerton, Wash.; Benson, Louise Newman, Missoula; Bickell, Susan Marie, Missoula; Bishop, Edwin Morgan, Hammond, La.; Blitz, Nioma Jane, Box Elder;

Bjorgum, Richard K., Billings; Blake, Daniel R., Hardin; Blastic, Mary Martha, Missoula; Boetcher, Carol Marie, Great Falls; Bonekat, Horace William, Drexel Hill, Pa.; Bourret, Faye Marie, Great Falls; Boyles, David Eugene, Ore.; Braley, James Joseph, Manhattan; Brejle, Nadia Madine, Missoula;

Brewer, Anne Terese, Los Angeles, Calif.; Brill, Thomas Barton, St. Louis, Mo.; Brooks, Phyllis Marian, St. Ignace; Brown, Donald Eugene, Vidler, Pa.; Brown, Kathleen Cecile, St. Paul, Minn.; Brown, Marilynn Jean, Missoula; Brown, Scott McLean, Miles City; Brown, Walter Lewis, Jr., Coldwater, Mich.; Brownell, Alice, Campbell, Conrad; Browning, Sharon Joy, Great Falls; Bruce, Raymond Rene, Helena; Bruns, John Ernest, Phillipsburg; Bubah, Carole Joyce, Anaconda;

Buldhaupt, Lida Louise, Beach, N.D.; Bunniss, David Jerome, Powers Lake, N.D.; Burns, Kerry I., Red Lodge; Burton, Dennis Aubry, Kalispell; Butchart, Bonita Marie, Kalispell; Carlisle, Constance Jo, Culbertson; Carpenter, Judith Ann, Missoula; Carson, Margaret Alice, Missoula; Chow, Meimei, Kowloon, Hong Kong; Chow, Shomei, Kowloon, Hong Kong; Clack, Theodore H., Jr., E. Aurora, N.Y.; Cladlin, James Latham, Lake Oswego, Ore.; Clark, Barbara Ann, Poplar; Clark, Thomas Roger, Bonner; Claunch, Richard Stephen, Walnut Creek, Calif.; Clawson, Kenneth Freeman, Drummond;

Clement, Wilfrid Reid, Missoula; Clinker, John Thomas, Missoula; Close, Pamela Jean, Spokane, Wash.; Cody, Kathleen Olive, Missoula; Cole, George Arthur, Laurel; Collins, Virginia Murray, Wilmington, Del.; Comeaux, Ann Phyllis, Spokane, Wash.; Comes, Eugene Ronald, Danvers, Mont.; Conley, Jan Louise, Spokane, Wash.; Coon, Norman Marland, Libby; Corbridge, Lynn G., Layton, Utah; Cordwell, Ann Kitson, Kellogg, Idaho; Corey, Carl Dewitt, Missoula; Corn, Hugh William, Superior; Corr, Joanne Marie, Black Eagle; Corrigan, Claude Vincent, Chino; Cougill, Candace Jane, Helena; Cowles, Donald Carson, Livingston;

Cox, Mary Ellen, Hardin; Crife, Larry Ford, Troy; Crippen, Robert Lloyd, Butte; Crocker, Roberta Ann, Choteau; Crockett, Melvin Donald, Evans, Wash.; Crockett, Charles Merlin, Evans, Wash.; Culverwell, Shadford E., Chewelah, Wash.; Cummings, Margaret J., Great Falls; Cunin, Bertha Hoffman, Bronx, N.Y.; Dalich, Charles Anthony, Great Falls; Dasenbrock, Mary Ellen, Anamosa, Iowa; Davidson, Olive Annette, Missoula; Davies, Kathleen Jean, Great Falls; Davis, Arden Lynn, Thompson Falls; Day, Robert Alan, Beaverton, Ore.; Desrosier, Dennis Gary, Meador; Downey, Ralph Arthur, Quarryville, Penn.; Drewek, John, Jr., Wausau, Wis.;

Driscoll, Joan Marie, Charlo; Dudley, Douglas Gordon, Barons, Alberta, Canada; Dunn, William Charles, Medicine Hat, Alberta, Canada; Dunsen, Charles W., Ohio; Eck, Gretchen Susan, Missoula; Edwards, William James, Butte; Egge, Karl Albert, Billings; Eide, Loxi Janice, Galata; Eley, Carole Irene, Great Falls; Ely, Joseph Connolly, Jr., Couer d'Alene, Idaho; England, Esther Louise, New Plymouth, Idaho; Enrico, Eugene Joseph, Billings; Erickson, Sharon Kay, Clinton; Everett, Paulette M., Anaconda; Ewing, Phyllis Lucy, Gidsan; Fager, Carl Madison, Wis.; Falkenberg, Eugene Edward, Botha, Alberta, Canada; Farnum, Sandra Lee, Missoula;

Farver, Ellen Murphy, Scobey; Favero, Phillip Gordon, Red Lodge; Fisher, Tanya Mariory, Missoula; Flarous, Robert William, Pittsburg, Penn.; Flaugh, Keith Oliver, Sioux City, Iowa; Flesch, Paula Catherine, Shelby; Foy, James David, Hot Springs, Francisco; Barbara S., Conrad; Frederick, Carol Ann, Billings; Frederickson, Robert Alan, Lewistown;

Frojen, Charlene Mae, Missoula; Froberg, Lawrence Alan, Ridgway, Penn.; Frojen, Chester Duane, Missoula; Fuhrman, Steve Wayne, Charlo; Gay, Randall William, Great Falls; Geber, Emma Marie, Red Lodge; George, Merilyn Fuller, Pine, Ariz.; Gerbase, Judith McKnight, Billings; German, John Patrick, Oilmont; Ghorashi, Bijan, Diha St., Tehran, Iran; Gigan, Tom Ray, Great Falls; Gollgostel, Robert John, Havre; Gonsior, Fay Margurite, Milltown; Gottfried, Herbert W., Missoula; Gough, Robert Graham, Seattle, Wash.; Graham, Robert McKoy, Kalispell;

Grasseschi, Karen Lee, Black Eagle; Gratten, Daniel Bruce, Great Falls; Graybeal, Patricia Jean, Missoula; Green, Laura Marie, Libby; Green, Richard Donald, Darby; Greenfield, Carol Lynn, Missoula; Griffith, Douglas Lloyd, Livingston; Grigel, Joseph Edward, Bellevue, Alberta, Canada; Groenhout, Edward G., Grand Rapids, Mich.; Grotts, Donald Dean, Roman; Gullard, Gary Allan, Billings; Guthrie, Gary Lawrence, Livingston; Haberchak, Constance Jean, Cut Bank; Hagedorn, Barbara Adele, Dillon; Hagen, Darrell Charles, Scobey; Halford, Larry J., Pocatello, Idaho; Hall, Roberta Marie, Sidney; Haller, Frederick Ray, Helena;

Hammer, Thomas George, Billings; Hammond, Karen Lynn, Missoula;

Hancock, Judith Marie, Missoula; Hankel, Steven Lee, Missoula; Hansel, Erik Myrick, Missoula; Harmon, Leone Kay, Libby; Harney, Mary Carol, Moccasin; Harrington, Neil Victor, Missoula; Harris, Edward James, Forsyth; Harris, Kenneth Jeffrey, Maurice; Harris, Sharon Ann, Deer Lodge; Hartelius, Channing J., Power; Hartman, Duane Darrell, Seattle, Wash.; Hauck, Thomas Corlette, Butte; Held, Doris Catherine, Missoula; Helgeson, Alvin Herbert, Myrtle Creek, Ore.; Helgeson, Alvin Herbert, Kalispell;

Hemness, Lee Arne, Kalispell; Henderson, Robert Charles, Salem, Ore.; Henry, Stephen Samuel, Sewell, N.J.; Herbert, Margaret Louise, N. Okla.; Herman, Karen Elizabeth, Bozeman; Hertel, Gerard Dennis, Old Greenwich, Conn.; Hibbs, Barbara Jean, Missoula; Hintzman, Francine Kay, Winnett; Hobbs, Faye Annette, Kalispell;

Hoffman, Joan Marie, Great Falls; Holland, James Daniel, Anaconda; Hol-loran, Jerry Robert, Corvallis; Holmes, Helen Eileen, Calgary, Alberta, Canada; Holmes, Richard Hood, Missoula; Hope, Janice Virginia, Missoula; Hope, David Wallace, Hamilton; Hoppe, Terese Marie, Missoula; Hoven, Mary Virginia, Havre; Hoven, John Terrel, Missoula; Howlett, David Robert, Billings; Howl, Kim Margaret, Missoula; Hunter, Sherril Lee, Livingston;

Inman, Richard Hart, Deer Lodge; Irvin, Judith Anne, Kalispell; Iverson, Carl Duane, Chester; James, Donald Kenneth, Butte; Jarrett, Raymond Dean, Big Timber; Jasper, Clarence Ira, Cisco, Ill.; Johanninger, Charles W., Carlsbad, N.M.; Johnson, Carolyn Kay, Billings; Johnson, Charles George, New Castle, Penn.; Johnson, Eric Warfield, Ely, Moines, Iowa; Johnson, Kathleen Marie, Shelby; Johnson, William, William, Gleneta; Johnson, William Bjarne, Great Falls; Johnson, Wilma Le, Rapid City, S.D.; Johnston, Merle James, Missoula; Jones, Cindy L., Missoula; Kaitera, Sandra Lu, Miles City; Katan, Robert Eugene, Harvey, N.D.; Kane, Larry Evan, Tacoma, Wash.;

Kann, William Lloyd, Thompson Falls; Kappel, Jo Ann, Sidney; Kaufman, Ann Marger, Malta; Kau, Luana Jean, Hamilton; Kay, Charles Edward, Villa Park, Ill.; Kazmierczak, Ronald M., Laona, Wis.; Kellogg, Joseph L., Jr., Missoula; Kelllogg, Sharon Alice, Glasgow; Kennedy, Joann Irene, Whitefish; Kendrick, Sully William, Deer Lodge; Kennedy, Barbara Jane, Belt; Kercher, Daniel Ralph, Billings; Ker-vice, Joe R., Billings; King, Harvey T., Hannah, N.D.; Kinzel, Charles Henry, II, Wayne, N.J.

Klindt, Robert Henry, Big Timber; Knaff, Cheryl Lee, Sidney; Knoche, Kenneth Gene, Chappell, New Neb.; Koch, Vivian Laraine, Florence; Koeh-ler, Audrey Leone, Missoula; Krutar, Jon Arthur, Susanville, Calif.; Kruse, Neil, Missoula; Lane, Phyllis Darlene, Deer Lodge; Lanier, Roy Allen, Missoula; Larner, Vernel Hazel, Phillipsburg; Larsen, H. Norman, Jr., Butte; Larsen, Mona Kay, Choteau; Larson, Carl, Missoula; Larvise, Francis, Carl, Missoula; Lavold, Margaret Arlene, Big Timber;

Law, Terry Michele, Missoula; Law-son, Robert Franklin, Whitefish; Layser, Earle Franklin, Jr., Slate Run, Penn.; Leeser, S. W. William, Deer Lodge, Ore.; Lehmkuhl, Dennis Merle, Onida, S.D.; Lemke, Carl Fay, Columbia Falls; Lemon, Allan Lee, Kalispell; Leonard, Dwight James, Portland; Leslie, Edward Eugene, Joseph, Kawakawin, Mich.; Libecap, Gary Don, Susanville, Calif.; Liffing, Joann Elizabeth, Missoula; Lingel, Anna Marie, Bigfork; Linn, Patricia Lucille, Whitefish; Livingston, Shaelyn, Missoula; Long, Lore Anne, Great Falls; Lopach, James Joseph, Great Falls; Loveall, Lynn Eugene, Columbia Falls; Low, Margaret Lucille, St. Ignace; Lucke, James Michael, Havre;

Lyonais, Delvina K., Missoula; Lyons, Elmo, Meridy, Waitsburg, Iowa; Clellan, Joan Margaret, Bonner; McDonald, Douglas M., Missoula; McDon-ald, Jean Katherine, Great Falls; Mc-Donald, Patrick Glen, Missoula; Mc-Donald, Jacquelyn Ann, St. Paul, Minn.; McFetridge, James Boyd, Calgary, Alberta, Canada; McGahan, Jerome, Liv-ington; McIntosh, Margaret Felt, Bil-lings; McKay, Larry Lee, Kalispell; McKinley, Sara Ann, Anaconda; McKin-sey, Karen Stuart, Missoula; Mc-Laughlin, Patrick Logan, Great Falls; McMarrell, Curtis Eugene, Eureka; McNeill, Robert Francis, Butte; Mc-vey, Gerald Edward, Juneau, Alaska; Maass, Mary Louise, Anaconda; Mac-Donald, Sheila Jane, Glendive;

Mackey, Donald Lee, Palm Beach, Fla.; Madison, Marla Mary, Beach, N.D.; Magnussen, Daniel O., Oakhurst, N.J.; Magnotta, John Anthony, Scrant-on, Penn.; Malnowski, Roy, Lancia, Butte; Malletta, Joseph Deyle, Shelby; Malouf, Richard Taylor, Missoula; Malouf, Robert Edward, Missoula; Man-ning, Douglas George, Kalispell; Mar-ten, Barbara Margaret, Missoula; Mark, Donald, Brea, Calif.; Markert, Thomas Joseph, Leonia, N.J.; Markle, Thomas Orval, Glasgow; Markley, Chester R., Jr., Alturas, Calif.; Mar-quant, Susan Dorothy, Big Lake, Minn.; Rainer, Hutchinson, Kan.; Martin, Douglas Francis, Great Falls; Mayhow, William Arthur, II, Custer, S.D.; Meath, Donald George, Missoula;

Meech, Russell Edgar, Missoula; Mel-land, John Francis, Clagary, Alberta, Canada; Melrose, Myra E., Minnetonka, Minn.; Patricia Lantis, Miles City; Mickelson, Peter Glenn, Tidioute, Penn.; Midgett, Douglas Kent, Missoula; Mielke, Elsie Marie, Harlowton; Mickelson, Ronald Allen, Valley City, N.D.; Mildren, Nancy Irene, Plains; Miles, Edith Ann, Auburn, Wash.; Mil-ke, Gary Clayton, Great Falls; Miller, Charles Edward, Portland, Ore.; Miller, Leslie James, Missoula; Milner, Robert Leslie, White Sulphur, Springs; Miller, Richard David, Kalispell; Mitchell, Michael Charles, Yuba City, Calif.; Mitch-ell, Delvin Glenn, Hamilton; Moody,

Robert John, Columbia Falls; Monney, Florence Marie, Walkerville; Morgan, Mary Deanne, Great Falls; Moser, Jann Elizabeth, Guttenberg, Iowa; Muller, David John, Corvallis; Murphy, Stephanie Ann F., Missoula; Nash, Michael Courtney, Missoula; Nayematsu, Carolyn Shizue, Hardin; Neely, Gene Paul, Emonton, Penn.; Neidhardt, Henry Gerald, Cut Bank; Nelson, Louise Calder, Kalispell; Nel-son, Richard Clary, Redlands, Calif.; Nickle, Carole Lee, Butte; Nienhouse, Gene Roy, Evergreen Park, Ill.; Nis-bet, Barbara Ann, Missoula; O'Donnell, Sandra Kay, Butte; O'Gara, Bartholo-mew W., Missoula; Ojala, Priscilla Rae, Great Falls;

Olinger, James Michael, Fayetteville, N.C.; Orr, John Richard, Great Falls; Ostenson, Ruth Sheryl, Missoula; Over-ly, Richard Jay, Pleasantwood; Overby, Jo Ann Schultz, Stanley, N.D.; Owen, Victoria Ann, Big Sandy; Palmer, Prince Dowu, Murrythin, Sierra Leone; Pangburn, Donald Duane, Lewistown; Paskvan, Jack Francis, Black Eagle; Payne, George William, Red Deer, Al-berta, Canada; Payne, David Eldah, Whitehall; Peck, Robert Barton, III, Shokan, N.J.; Pengelly, Mary Louise, Missoula; Pentz, Donna Marie, Poplar; Peretz, Richard, St. Paul; Perkins, Stanley, Bynum;

Peschel, Bonnie Faye, Missoula; Pe-terson, Clifford J., Riverside, Ill.; Pe-terson, Erik John, Oxon Hill, N.Y.; Peterson, Fannie Denise, Missoula; Petkewich, Richard M., Lynn, Mass.; Peter, Michael Irving, Great Falls; Pi-ber, Frances Emily, Missoula; Philips, Ron-ald Clayton, Cut Bank; Phillips, Mi-chael Quinn, Santa Anna, Calif.; Phi-lips, Dwight Edward, Hilger; Phipps, Larry Eugene, Billings; Piersen, Clif-ford P., Cleveland, Ohio; Rafferty, Rob-ert Oakley, Missoula; Randall, Ronald R., Jr., Shelby; Rasmussen, Mary Pa-tricia, Missoula; Rauch, Carol Ann, Voorheesville, N.Y.; Rechar, Kather-ine Louise, Pullman, Wash.; Redding, George Austin, Butte;

Rettig, Edward Pryor, Highwood; Revell, David Leo, Butte; Revell, Dixie, Glasgow; Reynolds, Harry V, III, Yellow-stone Park, Wyo.; Ricci, Francis Michael, Livingston; Rice, Gerald Du-ane, Helena; Ries, Ronald Edward, Powell, Wyo.; Roberts, Catherine Bayne, Spokane, Wash.; Robertson, James David, hree Forks; Robertson, Jack Alex, Billings; Robertson, Rob-ert Paul, Jr., Kalispell; Robertson, Richard M., Missoula; Robinson, Kath-ryn Zetta, Missoula; Robison, Kenneth Gerald, Great Falls; Rogers, Carole Gates, Superior; Rohrer, Judy Ann, Great Falls;

Rolandson, Gayle Ann, Missoula; Rorvik, Peter John, Missoula; Rosen-berger, Marilyn June, Missoula; Ruf-fatto, Jean Marie, Missoula; Rush, Margi Ann, Thermopolis, Wyo.; Rus-sell, Michael Edward, San Rafael, Calif.; Rutagumirwa, L. L., Buroba, Tanganyika; Sage, Frances Kellogg, Billings; Sabin, Michael Ann, Anacon-da; Sams, Benjamin Clark, Missoula; Sandberg, Norman, Painton, Missoula; Sanden, William David, Bigfork; San-din, Carole E., Phillipsburg; Sansaver, Kathleen Elaine, Butte; Sappenfeld, Elizabeth A., Missoula; Sayer, Jean-ette Gertrude, Missoula; Sayer, Jean-ette Jeanette, Gertrude, Missoula; Schmitt, Vernon Edwin, Custer, S.D.; Schnell, Harold James, Dickinson,

N.D.; Schultz, Warren Stanley, Dutton; Schwank, Kermit Dale, Missoula; Scott, Mary Elizabeth, Hardin; Searies, James Douglas, Missoula; Seines, Mary Janet, Polson; Sell, Dwain Erwin, Sco-bey; Selway, Margaret E., Missoula; Sendon, George Robies, Great Falls; Sepich, Paul James, Great Falls; Sheble, Audrey Lee, Choteau; Shire, Mary Ellen, Butte; Shoemaker, James Lawrence, Missoula; Short, Margaret Anne, Livingston; Simard, Gordon Ross, Sidney; Simmons, Lee Hugh, Red Lodge;

Skemp, Sheila Lynn, Missoula; Sla-ger, Barbara Ann, Missoula; Smith, Kenneth Arthur, Anaconda; Snow, Robert Howard, Alexandria, Va.; Snyder, James Harry, Missoula; Soons, Livingston, Moodbidri, South India; Solem, William Martin, Havre; Spall, Hugh Matthew, Great Falls; Speck, Carolyn Jane, Whitehall; Stander, Paula Anery Starima, Helen Frances, Hardin; Stayer, Judith Ann, Butte; Stenslie, Vangie Elin, Winfred; Ste-phenson, James Edward, Miles City; Sterling, Susan Lee, Missoula; Stevens, Carole Ann, Butte; Stewart, Fred Jo-seph, Kansas City, Mo.; Stewart, Gayle Ann, Missoula; Stewart, Karalee Ann, Hungry Horse; Stell, Lila Jean, Mis-soula; Stoterua, Susan Jane, Missoula;

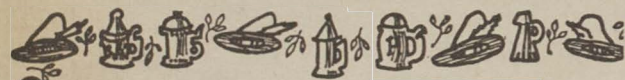
Stoverud, Linda Ann, Missoula; Strat-mann, George John, Havre; Svennung-sen, Lowell Rolf, Big Sandy; Swanson, Donald Raymond, Glencoe, Minn.; Sy-vertson, Judy Ann, Missoula; Talbot, Martha Leone, Missoula; Talkington, Larry Wilson, Boulder; Tannenholz, Joel Jacob, Missoula; Taylor, Betty, Dee, Missoula; Ten Ham, Woutersen Rutger, Hilversum, Netherlands; Tew, Allan Melvin, Goldford; Thornton, Mel-vin LeRoy, Ely; Tilley, Billings; Toker, Jerome Libby; Todd, James Gilbert, Great Falls;

Torgimson, Karen Lea, Miles City; Tree, Wayne Edwin, LaGrange, Park, Ill.; Treise, Robert Edwin, Helena; Trudell, Edward Richard, Orland, Penn.; Tutt, George Thomas, Elkhart, Ind.; Ulmer, Gregory Leland, Miles City; Ulberg, Thomas Andrew, Helena; Ulick, Andrew John, Helena; Valen-tine, Sharon Arlene, Helena; Van Win-ckle, Jan Martha, Bozeman; Vejtasa, Daniel Dare, Bonita, Calif.; Viall, Dal-las Arne, Miles City; Voight, David Kim, Bridger; Wachsmuth, Ronald William, Kalispell; Wagner, Joseph Anton, Vienna, Vir.; Wagner, Michael Austin, Billings;

Wakley, Neil Francis, Missoula; Wal-lace, Charles Wayne, Lewistown; Wal-work, Susan Ruth, Kailua, Hawaii; Walsh, Leon James, Columbia Falls; Walter, Rita Ann, Billings; Ward, Lin-da Faye, Westby; Watson, Vici Jean, Great Falls; Waters, Charlene Mae, Helena; Weaver, Sharon Ellette, Ana-conda; Webber, Daniel Lawrence, Rye-gate; Wedum, Neal Carl, Choteau; Weida, John Watson, Idaho Falls, Idaho;

Wellman, Janet Marie, Cameron; Wenckert, Eva Kristina, Scania, Swe-den; Wendland, Ernst Richard, Lusaka, Zambia; Werth, Lee Forrest, Helena; West, Deborah Jean, Livingston; West-pfall, Vior D., III, Albuquerque, N.M.; Westwood, Laura Hilda, Lodge Grass; Weyer, Judy Ann, Billings; Wheeler, Raymond C., Missoula; Wick, Ronald Casper, Fairview; Wicks, Gary James, Grand Coulee, Canada; Wilcox, John Elliott, Troy, N.Y.

Willey, Laurie Anne, Deer Lodge; Williams, Hale Paul, Butte; Williams, Terry Boyd, Dayton; Wilson, Dean Hol-brook, Great Falls; Wohlberg, Matthew Coryn, Los Alamos, N.M.; Wooding, Edmund Charles, Missoula; Woody, Alvin Robert, Lewistown; Wright, Gary Lee, Lacey, Wash.; Wrighton, Jack Hosking, Missoula; Wolf, Donald Dean, Deer Lodge; Yanzek, Joe Alan, Ro-nan; Yates, Rodger Douglas, Great Falls.



Der Professor sagt:

Welcome back students. Stop and see us tonight.

Life music, pizzas, und sandwiches served in Bavarian atmosphere.



Schwinn Bicycles Sales and Service

at
LUCEY'S
BICYCLE SHOP
2021 S. Higgins
Phone 3-3331

STARTS TODAY! Harvest Days Sale

Terrific savings on young-minded fashions! Come early . . . stay late . . . we're open until 9 tonight and tomorrow for your late shopping convenience! Open a Preferred Student Charge Account . . . save now, pay later! Ask in our Credit Sales on the second floor.

SKIRTS, SWEATERS

799-10⁹⁹

Famous Tami skirts and matching sweaters in a delightful assortment of styles and colors. Flat knits and bulkies . . . shakers and angoras . . . all in 14 delicious new colors! Charge your choice!

TOWN AND COUNTRY SHOP—second floor

The Mercantile

SEE TODAY'S MISSOULIAN FOR A COMPLETE LISTING!

Five University Graduates Serve With Peace Corps

Five UM graduates left this month for Peace Corps duties abroad following 12 weeks of training in the United States.

With the Peace Corps are Fred W. Reed, June L. Dullenty, Michael E. Green, Douglas Griffith and Nancy Engelbach.

Reed and Miss Dullenty, who graduated in sociology last spring, left for India where they will work in poultry production, agricultural extension and applied nutrition. Part of the Indian group of volunteers will be assigned to areas that have not previously had Peace Corps workers. The rest will replace volunteers who have completed their two years' service.

Miss Dullenty completed her training at St. John's College, Annapolis, Md. Reed trained at the University of California at Davis. During training, the volunteers studied Hindi, Telugu and Malayalam, three major languages of India. They also studied Indian culture and history.

Green and Griffith left Sept. 6 for the Philippines. They will expand Peace Corps teaching programs.

As "co-teachers," the volunteers will work with Filipino teachers, refining teaching methods. They will offer math, science and English curriculums.

Green and Ellis got their training at San Jose State College, Calif. They studied Filipino and were trained in new math, inductive science and English teaching.

Miss Engelbach, graduate in Journalism, left for Ethiopia Sept. 19. Volunteers in her group will

teach in junior secondary schools (7th and 8th grades) and at the Haile Selassie University School of Business in Addis Ababa.

During training at the University of Utah, Miss Engelbach's group learned Amharic, the language of Ethiopia. They studied teaching methods and theory and practiced teaching in schools near the training site.

The departing volunteers join the 10,000 other Peace Corps members now working in 45 nations of Asia, Africa and Latin America.

Forester's Day To Be Nov. 13

Gov. Babcock has informed UM foresters that he will proclaim Nov. 13 "Forester's Day" in Montana.

Forester's Day will be the second day of the 49th Annual Forester's Ball, Nov. 12-13. Boondockers Day will be Nov. 10.

Students are invited to enter the beard contest held in connection with the ball and to participate in Boondockers Day by dressing in ragged, western clothes.

Entertainment plans for the ball include the Ray Thrailkill Band from Hamilton and the Delta Gamma Can-Can Girls.

Oct. 31 Deadline For Fellowships

Nominations for Woodrow Wilson National Fellowship are open to seniors or graduate students. Every candidate must be nominated by a faculty member by Oct. 31.

The fellowships will be awarded to 1,000 prospective graduate students through funds granted by the Ford Foundation. The purpose of the program is to attract students to college teaching. A fellow is fully supported for one year at a graduate school in the United States or Canada.

Any member of the academic profession in a college or university may nominate a candidate for a fellowship. The Foundation primarily seeks candidates in the humanities or social sciences. Students seeking professional training are ineligible.

For further information, consult Warren Carrier, chairman of the English department, Woodrow Wilson campus representative.

The Suez Canal joins the Mediterranean and the Red Seas. Its maximum draft for vessels is 35 feet. Its construction was begun on April 25, 1859.

Bear Paws Tap New Members At First SOS

Thirty-two sophomore men were tapped for Bear Paws at an SOS Sept. 21. During Orientation Week they began their year of service with the Spurs tapped last May.

New Bear Paws are Terry Anderson, Bridger; Joseph Barnard, Cascade; Richard Bechtel, Glasgow Air Force Base; Mike Cahill, Helena; Cliff Christian, Helena; Ronald Coleman, Livingston; Jack Crawford, Glasgow; Gary Curtis, Missoula.

Bruce Flynn, Great Falls; Ted Flynn, Townsend; Clarence Frisbee, Cut Bank; Loren Haarr, Two Dot; Gary Hanson, Kalispell; Ron Hauge, Missoula; Paul Hickman, Boulder, Colorado; Lee Howard Hysham.

Ray Jarrett and Bob Klindt, Big Timber; Gary Libecap, Susanville, California; Terry Maltby, Livingston; Mike Meade, Anchorage, Alaska; Gary Moen, Kalispell.

Mike Noreen, Missoula; Bryan Peacock, Helena; George Peck, Deer Lodge; Ronald Pierre, Choteau; Eugene Presser, Wolf Point; Walt Presser, Wolf Point; Robert Trerise, Helena; Phillip Van Ness, Anaconda; Dallas Viall, Miles City; and Leslie Waite, Butte.

Officers will be elected at an organizational meeting Tuesday, Oct. 5.

Seven Queen Finalists Named

Seven finalists have been named for the 1965 Homecoming Queen contest.

Chosen for the final selection by students were Jill McIntosh, a physical education major from Great Falls; Gray Mannakee, from Cascade, who is majoring in liberal arts and journalism; Carolyn Dusek, Stanford, majoring in home economics; Charlene Howe, of the Glasgow Air Force Base, majoring in elementary education; Sue Jensen, Redstone, speech pathology major; Patty O'Loughlin, physical therapy major, Great Falls, and Bea Johnson, Billings, a music major.

The one who is chosen queen will be announced at coronation ceremonies on the steps of Main Hall October 29.

Montana Schools Receive Aid From Montana Bankers

During the first year of its existence the Youth Encouragement Program of the Montana Bankers Association loaned \$718,560 to 1,358 students attending eight Montana universities and colleges.

The University of Montana received the greatest amount of any campus, \$237,500, extended to 399 university students. Montana State University at Bozeman had the highest number of participating students, 412.

With endorsement, the hometown bank issues a check to the student. Repayment begins the first day of the fifth month after graduation or after completion of graduate education.

The program has two goals: to make low cost loans available to college students and to attract students to Montana colleges.

Eighty-seven Montana banks in the association have made the second \$10,000 installment on a

\$20,000 gift that provides a base for the plan.

Any needy student of at least sophomore standing may apply for a loan through his college or university. Application is made to the student's hometown bank for approval and forwarded for endorsement.

Forum Meets At Noon Today

An organizational meeting of Montana Forum will be conducted tomorrow at 12:15 p.m. in Territorial Room 4, according to Shelly Thompson, chairman.

Montana Forum, a discussion group, meets every Friday from 12-1 p.m. Members bring their lunches.

Various speakers address the group and an open discussion period follows. Membership is open to everyone, Thompson stressed.

If time permits, a tape pertaining to Selma, Ala., racial strife will be played at Friday's meeting.

Frosh Attend Annual Camp

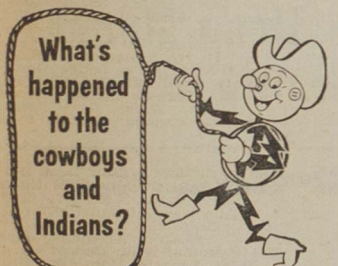
Ninety-five freshmen attended Freshman Camp, Sept. 16-18 at Camp Paxon on Seeley Lake. The camp is sponsored annually by ASUM to acquaint freshmen with student government, academic programs and campus social life.

Pres. Robert Johns and Andrew C. Cogswell, dean of students, discussed various aspects of campus life. Also speaking were Gardner Cromwell, professor of law; Tosh Tatsuyama, associate professor of religion; and the Rev. William Hassler.

The Rev. Richard Jones, Prof. Cromwell, and Mrs. Cynthia Schuster, philosophy, participated in a panel discussion on "Morals and Attitudes on a Coed Campus."

UM students serving on the camp committee were Steve Thompson, chairman; Barbara Nisbet, Secretary; Steve Gibbs, Jim Redmond, Jo Ann Hacker, Jim Stegmiller, Terry Soules and Shelly Thompson.

Faculty advisers were the dean of students; George Cross, assistant professor of physical education, Prof. Cromwell and Prof. Tatsuyama.



They're still here in Montana, thank goodness. But so is a whole new modern world of opportunity. All of us at Montana Power join with you in working to attract new industry. Helping Montana grow is everybody's job.



Student Union Movies

"Jules and Jim"

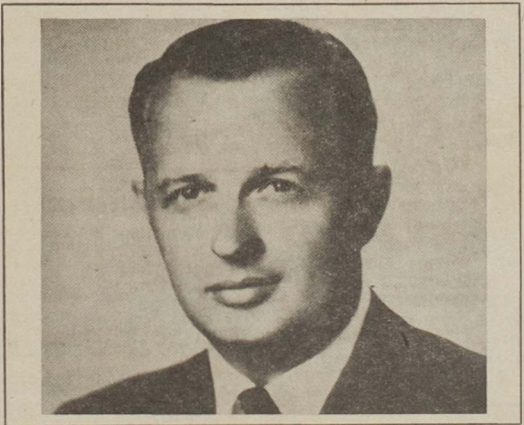
French Film With
Jeanne Moreau

Friday, October 1 7:30 \$.50

"Room at the Top"

Sunday, October 3 7:30 \$.25

University Theater



"A GOOD MAN TO KNOW"

OSCAR HAUGE

A brighter future can be yours through a modest investment in life insurance now!



NEW YORK LIFE INSURANCE COMPANY
WESTERN BANK BLDG.
549-5500

Life Insurance • Group Insurance
Annuities • Health Insurance • Pension Plans

BIG SKY DRIVE-INN

Welcomes All
University Students

For the best in Big Sky
Eating—Stop at the



1016
W. BROADWAY

Playing TONIGHT!

EEE-YO!
HERE COME



starring
TOM TRYON | HARVE PRESNELL | SENTA BERGER
and **MICHAEL ANDERSON, JR.**
Released thru UNITED ARTISTS

And Wild Comedy Co-Hit!

WHO IS DOING WHAT TO WHO?



in
'MASQUERADE'

RELEASED THRU
EASTMANCOLOR UNITED ARTISTS

OPEN AT 5:45
"Masquerade" at 8:10 Only
"Guys" at 6:00-9:55
First Show Out At 9:50

WILMA
Phone 543-7341

Student Union Reports Changes of Lodge Use

A Monday noon Quarterback Club, expanded feeding facilities and office relocations are some of the changes made by the Student Union this year, according to Ray Chapman, director.

Beginning next Monday films of the previous Saturday's Grizzly football game will be shown in the Territorial Rooms of the Lodge. The Grizzly coaching staff will narrate the films and discuss scouting reports of the next game. A Quarterback Club meeting will be held every Monday.

Another change announced was that the Yellowstone Room will be

used to accommodate the lunch and dinner overflow from the Cascade Room. Mr. Chapman noted, however, that this will not conflict with evening meetings and weekend social events held in the Yellowstone Room.

"We have about 2200 board students this quarter, and only 1300 seats in the Cascade and Treasure State dining rooms," Mr. Chapman said.

Two student offices have been relocated in the Lodge. The yearbook staff is now quartered in the former AWS office. Nancy Sasse, AWS president will temporarily have a desk in the ASUM offices. Meanwhile, space is being sought for a permanent AWS office.

Mr. Chapman announced two other Lodge policy changes. All groups wishing meeting space will have to register each week with Ed Niethold, catering manager, who will handle room scheduling.

During forthcoming elections and special activities no banners or posters will be allowed on the windows or walls on the inside or outside of the Lodge.

Johns Reports Formation of New Group

Pres. Robert Johns has announced the formation of his committee on the state of the university. The committee, composed of 24 students, was organized to inform students on matters of direct concern to them and to give them representation in these matters.

The following student leaders and the campus organizations they represent are: John Ross, ASUM; Brett Asselstine, ASUM; Dave Wende, ASUM; Lynne Morrow, ASUM; Dave Rorvik, Kaimin; Mignon Waterman, Sentinel; Cliff Peterson, Garret; Nancy Sasse, AWS; Cee Cee Cole, AWS; Gene Enrico, Student Union; Kathy Adolph, Mortar Board; Dave Howlett, Phi Kappa Phi; Don Meehan, IFC; Linda Clark, Pannellic; Billie Kay Rainville, women's dormitories; Ron Patterson, men's dormitories, and Pat Pierce, Student Union.

Other students on the committee were appointed by the dean of students. They are as follows: Frank Bain, Roger Barber, Bob Lovegrove, Betty Maciejewski, Lee Simmons, Fred Stewart and Shelly Thompson.

CALLING U TODAY

Rodeo Club organizational meeting, 7 p.m., Forestry 306.

Wesley Foundation Skeptics Corner, 7 p.m., Wesley House.

Christian Science Organization, 6:30 p.m., Music 103.

TOMORROW

Montana Forum, noon, Territorial Room 4.

Intramural touch football referees, 4 p.m., Men's Gym 304.

After Extensive Activities

Seven Sororities Pledge 153 Women During Rush Week

Seven UM sororities pledged 153 new members during fall rush week, announced Maurine Clow, associate dean of students.

Rush week began Sept. 21 and concluded with formal pledge dinners Tuesday night. Included in the week-long rush were open houses, firesides, costume parties and preference parties.

The pledge list:

Alpha Omicron Pi—Georgia E. Bowman, Saco; Marilyn Davis, Donna Hill, Kathy Kennedy and Bonnie Rohrer, Billings; Patricia Freedman, Glasgow; Donna Hawley, Laurel; Diane Higby, Helena; Nancy Johnson, Conrad; Cheryl Kogele, Terry; Carley Nelson, Butte; Ruth Stokes, Belt; Sharyl Waldron, Rockford, Mich., and Marcia Westfall, Bellevue, Wash.

Alpha Phi—Elizabeth Mary Anning, Salem, Ore.; Barbara Ann Bell, Dana Harrington, both of Great Falls; Shari Suzanne Billmeyer, Milwaukee, Ore.; Judith Anne Deschamps, Cheryl Lowe, Julie Lynn Parker, Jeannine Thibodeau, Jonette Watkins, Missoula; Kathryn C. Fisher, Catherine R. Gardner, Kalispell; Jane E. Gephart, Susan Hickey, Madison, Wis.; Jackie Hawker, Corvallis; Lynne Hileman, Whitefish; Patty Holmes, Conrad; Shirlee Johns, Butte; Sharon Rae Mogstad, Geraldine; Corey O'Connell, Barbara Riddock, Helena; Shirley Ann Pears, Wallace, Idaho; Annette Propson, Cheryl Smith, Billings; Marcia Sanborn, Dillon; Marilyn Summer-side, Libby, and Lynn Van Winkle, Bozeman.

Delta Delta Delta—Susan Rae Anson, Great Falls; Mary Margaret Blom, Havre; Helen Eileen Clapp, Susan Dee Millis, Sandra Jo Presta, Joan Sanderson, Missoula; Donna Marie Cloyd, Mary Lee Douglas, Jane Elizabeth Hamilton, Livingston; Merilee Coleman, White Sulphur Springs; Wanda Jean Criger, Sidney; Bobbi Lynn Emrick, Conrad; Sharon Louise Jones, Helena; Robin Lou Lawrence, Butte; Loma Alene Madsen, Plentywood; Sara Lyn Nelson, Lewistown; Marjorie Lynn Phillips, Dutton; Carol Inez Schmitt, Billings; Sally Elaine Smith, Anaconda; Ann Lorraine Sprague, Salem, Ore.; Bonnie Ann Wedekind, Schenectady, N. Y., and Darlene Mary Young, Roberts.

Delta Gamma—Sandra J. Bruschwein, Candice Garrett, Miles City; Carol Busch, Polson; Susan Cranmer, Susan Lucking; Helena; Leslie Denise Crowe, Anaconda; Kitty Fulton, Jennifer Han-

sen, Susan Nelson, Patricia Nolan, Patsy Marie Overcast, Judy Risk, Paula Wold, Missoula; Donna L. Harris, Fairfield; Lynn Hetrick, Whitefish; Paula Hoetzel, Spokane, Wash.; Patricia R. Hughes, Glasgow AFB; Nancy Irle, Janie Jo White, Glasgow; Jane Lawson, Havre; Jane Little, Sidney; TruDel Nottingham, Fort Benton; Deborah Trenery, W. St. Paul, Minn., Janice Witherspoon, Billings.

Kappa Alpha Theta—Marsha Austin, Calgary, Canada; Kandi Bisson, Diane Hangas, Susan Marcy, Janet Gayle Nelson, Linda Osburnsen, Barbara D. Strong, Sara Wilcox, MaryAnna Wolstad, Missoula; Michele T. Bogut, Havre; Janice Cragholm, Orinda, Calif.; Connie D'Andrea, Kellogg, Idaho; Georgane Edington, Linda Hall, Sidney; Mary Ann Fly, Miles City; Barbara Gabaw, Jan Lefler, Sandee Scanlan, Great Falls; Mitzi Jean Hamblock, Whitefish; Cathy Peck, Libby; Jesse Poore, Butte; Cathy Snyder, Williston, N.D.; Mary Vaughan, Barbara West, Bil-

ings; Ellen L. Williams, Westwood N.J.; Sandra Wicker, Kalispell.

Kappa Kappa Gamma—Diane Brunner, Barbara Krause, Spokane, Wash.; Pamela Clemons, Livingston; Carmen Desilva, Plentywood; Sandra Guest, Diane Lohn, Kalispell; Linda Hurni, Marilyn Zangar, Helena; Leslie Jensen, Katherine Mann, Linda Nichol, Jane Nordlund, Meg Wierzbinski, Bette Jean Wise, Billings; Karen Larson, Havre; Sue Loudon, Long Grove, Ill.; Tony Moss, Cashmere, Wash.; Julene Newland, Julene Newlund, Bette Jean Wise, Butte; Sandra Pramenko, Jean Ruffatto, Patricia Schulz, Ann Worden, Missoula.

Sigma Kappa—Ruth Louise Boydston, Ann Carter, Gay Gardard, Judy Jenkins, Cherie Whitman, Missoula; Mary Cheryl Fay, Lana Jo Richards, Billings; Leslie Anne Fournie, Santa Cruz, Calif.; Michele Gregg, Sioux Falls, S.D.; Jane Gustafson, Minneapolis, Minn.; Betty Hightower, Fort Benton; Deborah Kneesern, Sharon Smith, Thompson Falls; Marilyn Long, Mary Kay O'Blizalo, Deer Lodge; Sharon McGehee, Big Timber; Lynn Nelson, Belt; Barbara Richey, Sepulveda, Calif.; Dyan Roper, Cut Bank.

The New York Transit City System is run by the 3-man New York City Transit Authority, set up by the state legislature on April 21, 1955.

La Grande To Supervise KUFM Radio

KUFM radio, University of Montana FM radio station, begins its second season of broadcasting Monday night at 7 p.m. with a new production assistant, Daniel La Grande, a graduate student from San Francisco State.

La Grande's duties will be to supervise the FM radio station and to help produce some of the programs. He will be the producer of "University Reporter," a half hour weekly program. He will help produce "Grizzly Sports Roundup" and "University Concert Hall."

Basic staff members are students from the station operations course, Radio-TV 343. They are William McGinley, Mike Harsell, Rad Whitt and Marg Nichols.

Assisting them will be members of the news and advanced continuity course, Radio-TV 342. They are Ernie Hopseker, Ron Bradshaw, Tom McIntally and Bob Hoene.

Volunteers who will aid in running the station are: Linda Seeper, David Fulkerson, Mark Kramer, Warren Dale, George Peck, Theresa MacMillan, John Wilford, Rick Foote, Alice Peterson, Vern Argo, Rex Hueschkel and George Reczek.

THURSDAY SPECIAL

Deluxe Burger & Fries
40¢

Second Order For 10¢



Highway 10 West, across from
the Mountain View Drive-In
Theater on the "Miracle Mile."

WELCOME BACK STUDENTS

Let us handle your cleaning
and laundry

"FRESH AS A FLOWER IN JUST 1 HOUR"

ONE-HOUR MARTINIZED CLEANERS

Holiday Village

CLASSIFIED ADS

Each line (5 words average)
first insertion 20c

Each consecutive insertion 10c
(No change of copy in consecutive insertions)

If errors are made in advertisement,
immediate notice must be given the
publishers since we are responsible for
only one incorrect insertion.

Phone 543-7241, Ext. 215

6. TYPING

EXPERT TYPING. ELECTRIC typewriter. Phone 543-6515. 1-tf

9. WORK WANTED

UNION DRUMMER NEEDS dance jobs to finish graduate school. Can double on sax. Call Russ Doty, 549-8879. 1-6c

18. MISCELLANEOUS

COMPETENT CARE in comfortable home equipped to occupy your children while you work. Near University. 543-8902. 1-6c

22. FOR RENT

ROOM FOR ONE MAN. One block from University. Call evenings, 543-5347. 1-tf

25. BUSINESS OPPORTUNITIES

UNUSUAL OPPORTUNITY: West Coast Corporation recently reorganized that can withstand rigid financial examination is offering on a no-franchise fee basis exclusive distributorships. This is a product in demand by every home owner and every business and is currently being used by such national organizations as Sears Roebuck and Co., Holiday Inn Motels and various branches of the armed forces. Product 100% guaranteed; investment from \$600 to \$14,000. Investment guaranteed with 100% markup. Manufacturer has proven method of distribution advertising and merchandising. Factory representatives will assist you in setting up your business. For complete details and descriptive literature write National Chem-Plastics Corp., 1550 Page Industrial Blvd., St. Louis, Missouri 63132 or call collect Robert T. Adams at HA6-7242. Area Code 314. 1-12c



Be Extra Lovely
For That Special Evening
This Weekend

—Visit—

the Menn Hause
Beauty Salon

736 S. Higgins

Ph. 543-8051

Great Western Presents—

THE SNAPPER



All-wool melton cloth with pile lining and hood
Colors—Olive and Coffee

\$39.95

K-G men's store

Open Weekdays 'Til 9—Saturdays 'Til 6

HOLIDAY VILLAGE