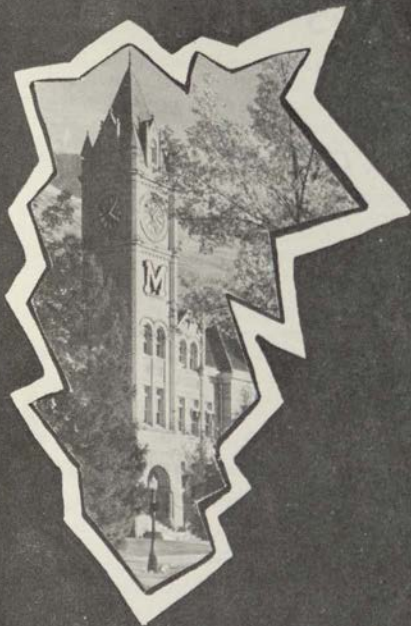




A
W
S

TIME-
TABLE



Hi!

AWS TIME-TABLE

A College Handbook for College Women

EDITORS

JOAN HOFF

NORMA BEATTY

STAFF

Kathleen Harris

Kay Lund

Roberta Dixon

Sharon O'Neill

Judy Weaver

Published by

THE ASSOCIATED WOMEN STUDENTS OF
Montana State University in Missoula, Montana
1955-56

AWS Is You . . .

AWS—those three letters stand for a great part of Montana State University life. **Associated Women Students** is an organization that every woman automatically belongs to when she registers. Its purposes are many, and each one is a benefit to the members.

'Way back in 1914, the "Women's League" was formed by the women students on campus and since then the group has grown up, changed, and developed into a governing body "of the women, by the women, and for the women." To-day, the Executive Board (composed of representatives from every women's living group on campus) meets every week to regulate all matters which do not fall under the jurisdiction of the faculty.



Throughout the year AWS carries out a program designed to unify women attending MSU, give more leadership opportunities for women, to work for better living conditions for women, and to foster a living school spirit. AWS is a member of the Intercollegiate Association of Women Students, and by attending national meetings it is possible for MSU women to keep track of what other college women are doing and to exchange ideas for to better AWS and campus improvements.

But remember . . . **you are AWS.** You are its sole justification for existence and its only means of functioning beneficially. Take part in making **your** club even better.



Welcome to Montana State University and to membership in AWS. We are looking forward with much pleasure to sharing with you our university opportunities and especially our women's activities. AWS has prepared this booklet as a guide for you in your life on the campus. We wish for you a stimulating and inspirational year and shall be happy to assist you at any time.

Maurine Clow

Associate Dean of
Students

University life is a new experience and one to which I am sure you are looking forward. I am pleased to have the opportunity of joining with Dr. Maurine Clow and the Associated Women Students in greeting you and wishing you success and happiness at MSU.

Harriet Miller

Acting Associate
Dean of Students



Left to right: Joan Hoff, vice president; Betty Millhouse, treasurer; Darlene Forzley, president; and Luanna Page, secretary.

Hi —

On behalf of the Associated Women Students of Montana State University, it is my privilege to extend to you a most hearty and warm welcome.

We're glad that you have chosen our University and hope you will enjoy your stay here. Part of your enjoyment will stem from participation in some of the many organizations and activities offered at MSU.

But before beginning to take an active part in campus life you probably have many questions concerning the University, classes, dorm-life, and things in general that need to be answered. We hope that this handbook contains most of the answers to your questions and a few little additional tips besides.

See you this fall!

DAR FORZLEY, President,
ASSOCIATED WOMEN STUDENTS

Additional Finances

Need some money?

The **AWS Loan Fund**, instituted in 1923 at MSU, was established to provide financial aid to women students. Any girl may borrow from the fund. The loan is approved by the AWS president and the associate dean of students. There is over \$2000 in this fund and any amount up to \$200 may be borrowed at 2% interest. The rate at which this money is paid back, i.e., monthly, quarterly, etc., depends upon the individual case.

Every woman student who feels that she lacks the money to continue her college education should consider applying for this fund. It can provide the necessary stepping stone toward that ultimate goal of a sheepskin.

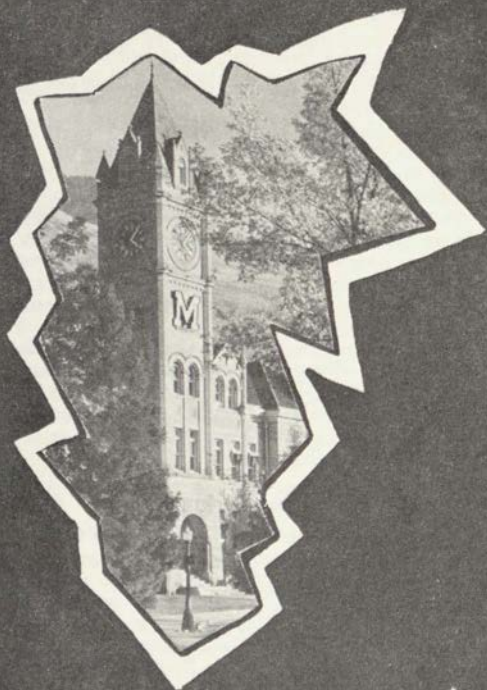
What about a scholarship?

A new scholarship just established in 1955 is the **AWS Cheadle-McKinley Memorial Scholarship**. This \$50 was awarded for the first time spring quarter '55.

Any sophomore woman student at MSU can apply; the winner is chosen by the associate dean of students, a faculty member, president of AWS and a member of the AWS Executive Board.

This new scholarship is presented by AWS in memory of Jane Cheadle and Marlene McKinley, outstanding MSU students, each of whom has died in the last five years. AWS plans to make this an annually awarded scholarship.





Time to Get
Acquainted

Why did you come to a university?

(1) To have the opportunity to make something of yourself?

(2) To obtain a career that will support you in the years to come?

(3) Because you realize that education is of high value for you now and in future years?

(4) Because you believe an education helps a woman to be a better homemaker and mother?

(5) Because you know that at a university such as MSU you will be associated with people possessing ideas, personalities, and cultures that may prove worthwhile to you?

(6) Or perhaps you came just to find a man and settle down . . .

Whatever your reason or reasons, no matter how they may change in the course of your stay here, only you will ever know if your reasons for coming were, in the end, fulfilled. It is left entirely up to you to gain and profit from what is offered at Montana State University.

Let's meet a few buildings . . .

Main Hall is the heart of MSU. From behind its sturdy walls, built in 1897, radiate channels to all parts of the campus, the city, and the state.

Inside this building you will find various offices and departmental divisions such as the Dean of Students Office, the Business Office, the Registrar, the Public Service Division, and the Counseling Center.

Of special importance to both the old and new students are: (1) The Dean of Students office where the **Associate Dean of Students** (more commonly called the Dean of Women) can be found. Her office is always open to university students and she is ready to aid and offer guidance concerning campus life, both social and academic.

(2) The **Counseling Center** helps you to de-

cide about your major field and for what courses of study you are best adapted.

In addition to this counseling service, an **adviser**, usually a professor in your field of study, will be assigned to you before registration. For as long as you attend the "U" this adviser will be on hand to aid you in the selection and planning of your courses.

The rosy cheek department . . .

The **University Health Service** is maintained on campus in order to safeguard the health of the students and to furnish medical service and nursing care to those who become ill or injured during the school term. Required fees, paid at the time of registration each quarter, entitle you to the privileges of the Health Service.

Work on a new Health Center has begun, with the new construction scheduled to have four wards and three isolation rooms.

Remember, good health results not only in better grades, but also more fun.

The place to hit those books . . .

The **library** is probably your best friend on campus, whether you realize it or not. It is the ideal place for most of your studying and research work; and construction for the enlargement of the present building is underway to provide even more room to cram for those exams. It's a little confusing at first to learn just how the library "works," but able librarians and student assistants are always on hand to direct you to the book ("I just have to have or I flunk").

For fun and food . . .

The new **Lodge** has just been completed, and serves the dual role as a **Student Union** and **Food Center**. In its function as a Student Union, it

serves as a recreational and meeting center for all campus students and activities. The Grill, located in the basement, takes care of those between class snacks. The offices and council rooms for meetings are situated on the second floor. Dances can be held in the larger rooms, and a game room is located off the Grill. The rooms in the Lodge are named after some of the counties in Montana.

Meals for all residents of the dorms are served in the **Food Center**, with the exception that women students eat breakfast in the North Hall dining room. Definite schedules of meal hours are posted in all dorms. Meals, as well as "those in-betweens," may be bought in the Grill.

The churches welcome you . . .

During Orientation Week all **churches** will present an open house at the University for new students. There you can meet the church pastor, find out about your church services and the University clubs your church contacts; and besides, they will enable you to make new and interesting friends inside your church.



So, as an up-and-coming Grizzly, try to start the first Sunday here with a church service. Addresses are listed in the classified section of the telephone directory, and a map of Missoula is on the back cover. Away from home doesn't necessarily mean away from church.

On campus, students representing all religious groups and living centers participate in the **Student Christian Association**, which is open to all students. Later in the fall SCA will sponsor **Religious Emphasis Week**, at which time speakers from various denominations visit the campus and

talk to the different living groups and classes. The various church organizations include **Canterbury Club**, **Christian Science Organization**, **Lutheran Students Association**, **Newman Club**, **University Congregational Fellowship**, **Wesley Foundation**, and **Westminster Foundation**.

Courses for credit in religion are also offered in the M.S.U. curricula under the direction of the Dean of Religion.

Now here's where you stay . . .

Housing facilities for on-campus women include three residence halls: **North** and **Corbin** for freshmen, and **New Hall** for upperclass women.

These dorms are under the supervision or head residents. In the freshmen dorms, besides the house mothers, there are junior sponsors (junior women students) ready to help at any time. The sponsors give pointers on such things as the government of the dorm, study habits, social life, and other general information about living at MSU.



If you prefer to live in a co-op, the **Synadelphic House** is open to all women students whether freshmen or upperclassmen. Here expenses and housework are shared, as well as all the fun.

Sororities are open to upperclass women who choose to live in one of the six houses located off campus. Freshmen "pledges" are required to live in the dorms during their first year at MSU.

Wherever you decide to live while attending the University you will find yourself a part of an organized social unit. This process of group living which comes as a new experience in your life will not only prove profitable in later years, but be a lot of fun right now too.

The city itself . . .

Missoula, "The Garden City," is the hub of a busy and thriving community. It is the center of five great valleys and the crossroad of Western Montana. Its name is taken from the Flathead Indian term meaning "near the cold, chilling waters."

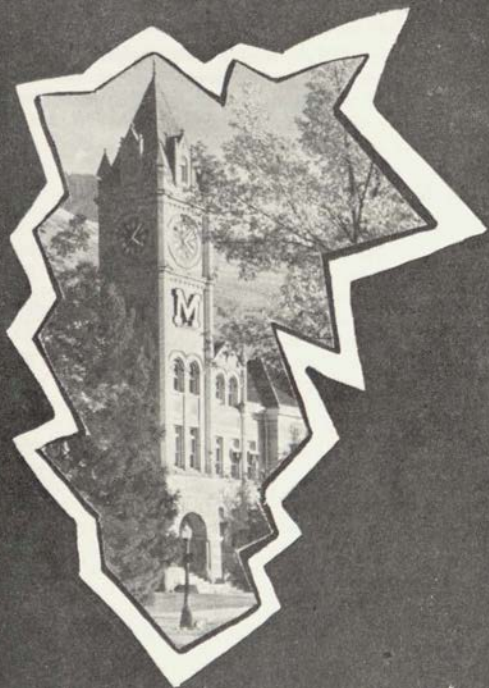


You'll find also an abundance of things to do in and around Missoula. There are many recreation and vacation facilities. City parks, tennis courts, picnic areas, horseback riding, six theaters, two bowling alleys, and a roller skating rink offer off-campus activity. Nearby ski hills offer winter fun, while the year-round Glacier ice rink on campus can be enjoyed minus freezing temperature.

Missoula's major industries include lumber mills, construction companies, meat-packing plants, and a sugar beet factory. The regional headquarters of the U.S. and State Forest Services are also located here.

Hey Frosh!

Freshmen will be introduced officially to MSU, her buildings, facilities, fraternities and sororities, clubs, church affiliations and rules during **Orientation Week**. This starts on Sunday, a week before classes begin. It's a hectic week, with tests thrown in on top of everything else. But it is here that as a freshman you meet students from all over the state, many of whom will become your friends for more than the years spent at the University. There's an old saying, "If you can make it through Orientation Week, you can take anything." It's an important week in your life—make the most of it.



Time-Bound

Thru the years . . .

MSU has many customs and annual happenings—she calls them **traditions**—that endear her to her students. These events, proudly observed by all true Grizzlies, give college life the spice that make you remember the fun!

Just for the Cub . . .

The first tradition an incoming Grizzly cub meets is **Orientation Week**—a time of making friends, having fun, getting acquainted with the campus, and incidentally, taking tests. AWS, to which every woman on campus belongs, helps cubs tremendously in this baffling week of transition. On one of the first nights at the "U", AWS puts on a get-acquainted party for big and little sisters, who have been writing to one another all summer. Campus organization prexies and representatives tell all about life on campus and the frosh get informed about honoraries and places to use their talent at school.

On **Sob Sunday**, the second Sunday away from home, AWS, in conjunction with Spur and Mortar Board, plans a tea to give homesick cubs a chance to get away from all those thoughts of home. AWS big sisters take their little sisters and help them meet the other frosh and upperclasswomen.

AWS sponsors many activities throughout the year—one at Easter time—an egg hunt for the faculty children, and another called Women's Day, with a luncheon and festivities honoring the women on campus. Any more mature grizzly will tell a cub that AWS and its committees help make life at MSU fun and worthwhile, and that it is the organization to depend on for help in solving the mysteries of life on campus!

All frosh scramble up Mt. Sentinel some afternoon of the week and partake in **Painting the "M"**. Many, many buckets of white wash cover the "M", and somehow manage to cover the co-eds and fellas too. Spurs and Bear Paws are on hand to guide the activity and give out refreshments to the hard-working frosh when it is all done. All during the week freshmen will be identified by their **Frosh Beanies** which they wear at **all** times.



Every fall the freshmen paint the **Victory Bell** so that it will be in proper condition for every Grizzly victory. It is the responsibility of the Freshmen to see that the glad tidings ring out after every MSU triumph.

Everybody pitches in . . .

Homecoming, the weekend honoring alums, boasts a football game, a homecoming queen, and a big parade with floats sponsored by all the houses and dorms. A **Bonfire** (freshman sponsored) on Friday night climaxes a big Grizzly pep rally.

On Fridays before big MSU events, **Convocations** are usually held. Student Outside Entertainment is featured, and the whole university gathers for a worthwhile fun hour.

The Grizzly-Bobcat game, (usually won by MSU) is played in Bozeman and Missoula on alternate years, and is the high spot for rivalry between MSU and MSC. A traveling trophy is presented to the captain of the winning school's team.

All dads are honored at a football game on

Dad's Day. The dad coming the furthest for the occasion and the oldest dad are given awards.



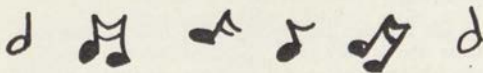
Hello Walk is the sidewalk dedicated to friendship, where traditionally everybody greets everybody else with a friendly hello or "hi." It is the section of sidewalk from the Student Arts and Craft building to the west

entrance of the Liberal Arts building.

Annual affairs . . .

Some of the important social traditions on campus are the **Foresters Ball**, given by the woodsmen in Paul Bunyan's honor; the **Barristers Ball** where the lawyers fete J. Learned Brow; the **Nite Club Dance**, presented by the music school in a nite clubish atmosphere with a good floor show; the **Military Ball**, sponsored by the ROTC unit; and **Sadie Hawkins**, the dance the Spurs give so that every Daisy Mae on campus can catch her Lil' Abner.

We gather at Main Hall . . .



At SOS, a beloved tradition of Singing On the Steps of Main Hall, the songs of MSU led by Spurs and Bear Paws are perfected and honoraries tap their successors. SOS starts promptly at 7:30 p.m. and when the clock begins to strike eight, everyone is silent until the eighth gong is heard. Then the assembled students sing "Old College Chums," and walk away humming it, feeling happy and friendly, as the Main Hall

tower, the night, and the singing mingle to create the spirit of MSU.

And in the spring . . .

Professor William (Daddy) Aber used to have a day dedicated to him. It was a day when all MSU gathered to make the campus beautiful, partake of a barbeque, and follow the proceedings of High Court, but modern **Aber Day** got to be too much for us, and **Spring Vacation** has been substituted.

Interscholastic is the weekend when Montana high school students gather at MSU to compete in athletic events, speech, dramatics and journalism. Everyone tries to show them a good time and give them a taste of university life. Mortar Board, Spurs, and Silent Sentinel tap their new members, and an all-school song festival is held.

Mighty Seniors only . . .

And when a Grizzly gets to be a senior (and only then), he is entitled to sit on **Senior Bench**, a bench donated by the class of 1910, and located just inside the right of the entrance to the oval.



On the Saturday before **Commencement**, upper-classwomen honor the

graduating seniors by the **Lantern Parade**, another AWS sponsored project. The co-eds march around the oval carrying lighted lanterns while the seniors in caps and gowns, form an M in the center. "Montana My Montana" is sung from the tower of Main Hall, and MSU women respond with "Old College Chums."

Teeney, but important . . .

These then, are the traditions of MSU—these and lesser one like walking around the oval, not across it, the lawyers stealing Bertha, who is the

Foresters' prized stuffed moosehead, the band marching on the clover bowl day after day, and twirp season (The Woman is Requested to Pay). They all enrich the days spent at MSU creating memories that will live on as do the traditions themselves in the hearts of past and present students.

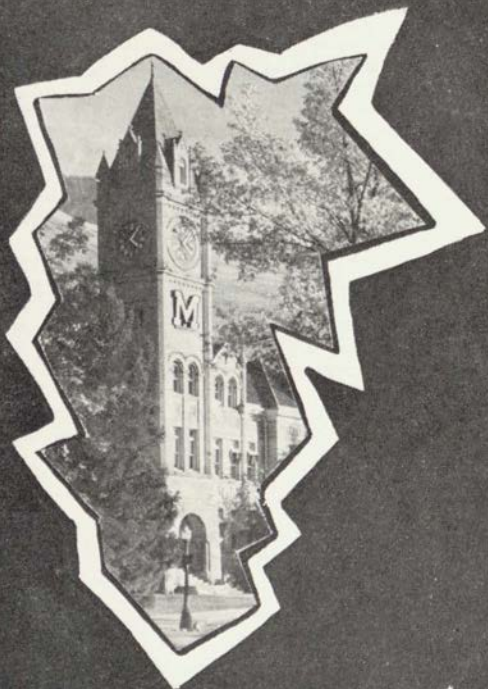
ACTIVITIES BALANCE

In the next few pages, this AWS handbook will be promoting the many activities, honoraries, and offices open to women students of MSU. But AWS would also like very much to see the women who enter as freshmen, as graduating seniors in about four years. And so, at some point extracurricular participation must be regulated, not only to keep those grade averages up, but also to ward off a severe case of ulcers or "activity fatigue."

In view of this, the Executive Board of AWS has approved the following schedule. This is a list of what are termed, "PERMANENT A" activities, and **no more than one of these positions can be held at the same time** by any woman student attending MSU. A university woman can, however, hold a "PERMANENT A" and at the same time hold any number of other student offices, committee assignments, club memberships, and various campus positions not listed here.

PERMANENT A

President of AWS
President of ASMSU
Editor of Kaimin
Business Manager of Kaimin
Editor of Sentinel
Business Manager of Sentinel
Secretary of ASMSU
Business Manager of ASMSU
Vice President of ASMSU
President of Spur
All Living Group Presidents



Time Out for
Dates

Eek!—Nothing to wear . . .

What to wear? The following chart should assist you in choosing your apparel for almost every occasion that will arise.

Just a few hints first though. If you're planning to buy many new clothes before you come to MSU, remember—plan your wardrobe so that it revolves around two or three basic colors. This makes for a more stylish you and cuts down upon your expenses for matching accessories. Don't buy too much—wait until you're in the know.

If you aren't quite sure—stick to the conservative side. A plain coat can go anywhere, even for evening; so can a smart simple suit. A basic dress can be changed by scarves and beads. Plain pumps are always smart and never out of style. A raincoat and galoshes are needed. Jeans are worn only for picnics or intramural sports—NEVER downtown, which is considered across the bridge. They are correct too, at barn dances and the Foresters' Ball.

U-mm, those men . . .

Dating will be an important part of your life at MSU, and with a little common sense and a few sensible rules to follow, you can't go very wrong. Just in case you might be a little hazy on some points, here are a few hints that might come in handy.

It's not good public relations to:

1. Break a date with one man to go out with another one. The first one will certainly not appreciate it, and the second one will probably end up mistrusting you, too.

2. How about blind dates? Well, you're not taking any more of a chance than he is. Just be sure of who arranges the date, and chances are you'll be O.K.

3. When you are asked on a coke date, don't

order a banana split. What if he's only got a dime? Besides, consider your figure.

4. Be a little bit lazy. Hand him your coat, and hesitate before doors. He'll catch on, and he'll probably like it.

5. Try not to rattle on and on about the other men in your life. Your date, being reasonably normal, would probably prefer other subjects, and especially appreciate it if he could get a few words in now and then.

6. And while we're on the subject, young love will probably blossom, as young love has a habit of doing, but nothing is gained by demonstrating the fact all over campus especially on the steps of the dorms at about 1:01 a.m. Remember, you'll see him tomorrow, and anyway, the housemother would like to get a little "shut eye."

People, people, everywhere . . .

You've been meeting people all your life, and during your stay in college, you'll meet just that many more.

It's up to you to be the kind of person they want to know better, and your first impression will play a big part in this. Here are a few pointers that go a long way toward making a favorable impression on people.



What about your appearance? Extreme clothes or overdone make-up can be fatal. It's better to be on the retiring side than to attract too much of the wrong kind of attention to an out-of-place dress. Stringy, unkept hair has never been known to do anyone much good, especially socially. A girdle can do wonders for poor posture.

How do you sound? A pleasing voice and good grammar can do a lot toward making a good impression, and the language you use will help considerable, too. Profanity and slang have never been known to make many friends. It has been said that gossiping has its place, but as of yet nobody has found the right one.

Your general, well-mannered self is the most important factor in your personality. No matter how nicely you look or well you talk, you won't keep the friends you make very long unless you show them the consideration they have the right to expect.

Say it with the right words . . .

But even though you may possess all these qualities and the looks of Venus besides, you're lost if you just don't know what to say when you first meet someone. At college you'll be forever in the process of introducing "so and so" to "so and so." The most gracious form to use is, "May I present . . ." but more simply you can say, "Do you know . . ." or "I'd like you to meet . . ." or simpler still, you may just mention the two names. **Try to give some information about the people you are introducing so that the conversation will start rolling.** Nobody likes to stand like a bump on a log in utter silence.

Which name comes first?—the woman's if you are introducing members of the opposite sex, the older person's if they are of the same sex; the married woman's first if introducing her to an unmarried woman; the most important person first if he is really distinguished.

Examples:

"Miss Fair-sex, may I present Mr. Tall and Handsome."

"Mrs. Gray-hair, Miss Feather-cut."

"Dr. Forbes—do you know Miss Feather-brain?"

If you are being introduced be sure to smile and say, "How do you do?" Shaking hands seems to present a problem so here's the formula. Two women may or may not shake hands. You



usually don't offer to shake hands with a man unless you are the hostess; and your handshake should be a happy medium between a dead fish and an Amazonian strangle hold. Never refuse an extended hand.

When parting Mr. Gentleman may say, "I'm glad to have met you." If he does you may reply, "Thank you," or on special occasions, "It's been a pleasure," (if it has). However, play it cool and never express your elation first.