

University of Montana

ScholarWorks at University of Montana

University of Montana Conference on Undergraduate Research (UMCUR)

Building Montana's First Firewise Demonstration Garden

Melody Hollar

University of Montana, Melody.hollar@umontana.edu

Zachary Garibay

University of Montana, Missoula, zachary.garibay@umontana.edu

Nathaniel Miller

University of Montana, Missoula, nathaniel3.miller@umontana.edu

Ethan Smith

University of Montana, Missoula, ethan4.smith@umconnect.umt.edu

William Stevens

University of Montana, Missoula, william3.stevens@umontana.edu

See next page for additional authors

Follow this and additional works at: <https://scholarworks.umt.edu/umcur>

Let us know how access to this document benefits you.

Hollar, Melody; Garibay, Zachary; Miller, Nathaniel; Smith, Ethan; Stevens, William; and Rebholz, Maxwell, "Building Montana's First Firewise Demonstration Garden" (2020). *University of Montana Conference on Undergraduate Research (UMCUR)*. 6.

https://scholarworks.umt.edu/umcur/2020/lifesciences_oral/6

This Presentation is brought to you for free and open access by ScholarWorks at University of Montana. It has been accepted for inclusion in University of Montana Conference on Undergraduate Research (UMCUR) by an authorized administrator of ScholarWorks at University of Montana. For more information, please contact scholarworks@mso.umt.edu.

Presenter Information

Melody Hollar, Zachary Garibay, Nathaniel Miller, Ethan Smith, William Stevens, and Maxwell Rebholz

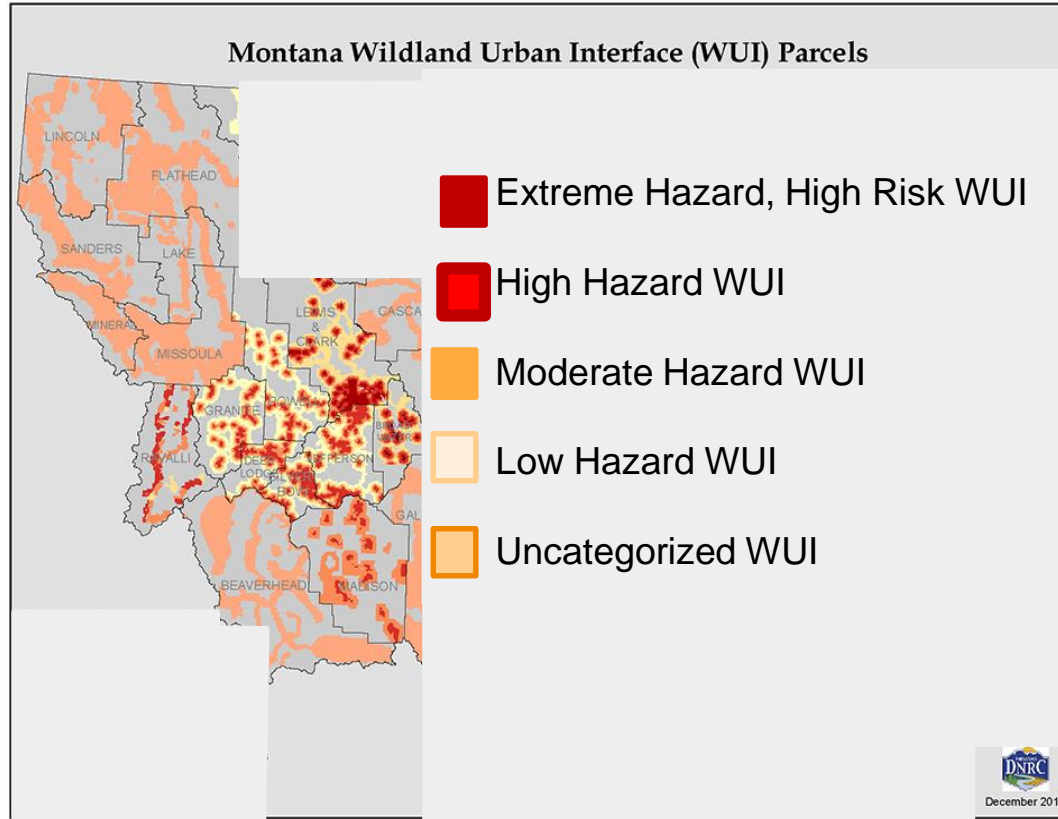
The background of the slide is a photograph of a wildfire. In the foreground, a two-story wooden cabin with a gabled roof and multiple windows is visible. The cabin appears to be surrounded by flames and thick smoke. The fire is intense, with bright orange and yellow flames rising from the ground and trees. The smoke is thick and grey, partially obscuring the sky. The overall scene is one of a severe wildfire event.

Montana's First Firewise Demonstration Garden

Melody Hollar, Nate Miller, Liam Stevens, Ethan
Smith, Zachary Garibay

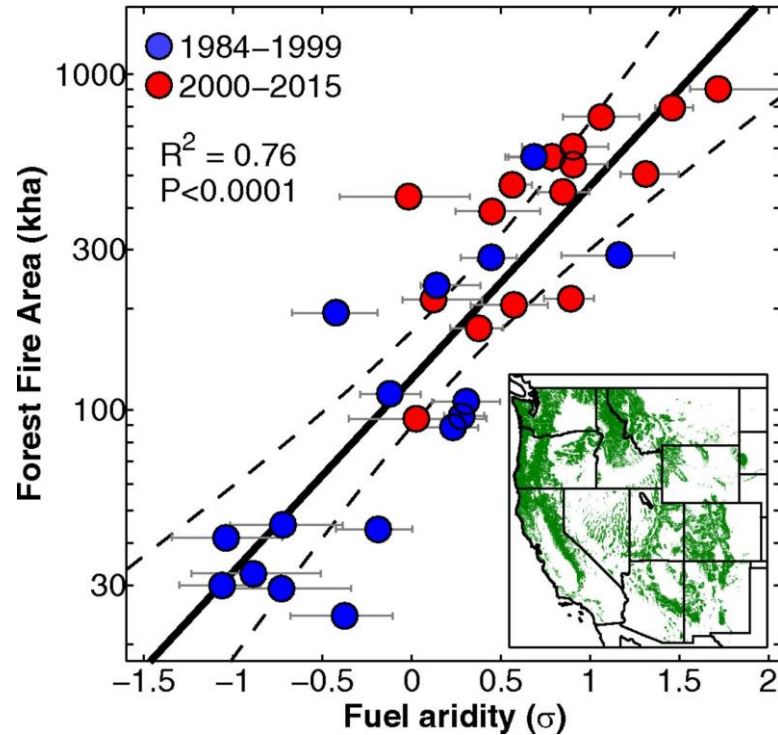
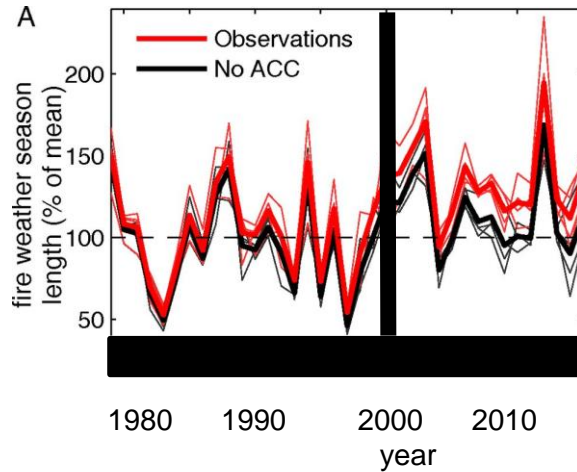
Contact: nathaniel3.miller@umontana.edu

Montana Wildland-Urban-Interface (WUI) Map



Adapted from Image at:
Gallatin County Emergency
Management,
link: <https://www.readygallatin.com/community-resources/preparedness-information/wildfire-in-gallatin-county/>

Fires in the west – increasing acreage, more of the year



Modified from Figures from: Abatzoglou, J. T., & Williams, A. P. (2016). Impact of anthropogenic climate change on wildfire across western US forests. *Proceedings of the National Academy of Sciences*, 113(42), 11770–11775. doi: 10.1073/pnas.1607171113

Main Source of Ignition

Ember transport is responsible for 2/3 of structure fires in the WUI









Home Defense Space

- Zone 1- 30ft
- Zone 2- 70ft
- Zone 3- Until property line

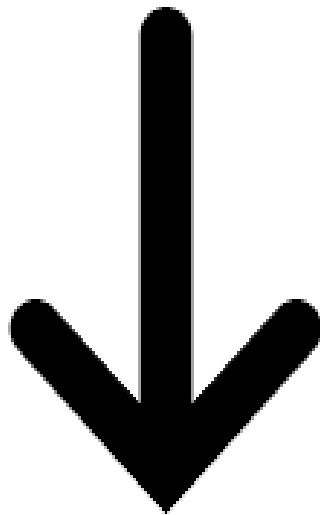


Firewise Vegetation

- Loss of firewise vegetation
- Importance of firewise vegetation
- Why should you use firewise vegetation?



Public awareness



Demonstration Gardens in Use

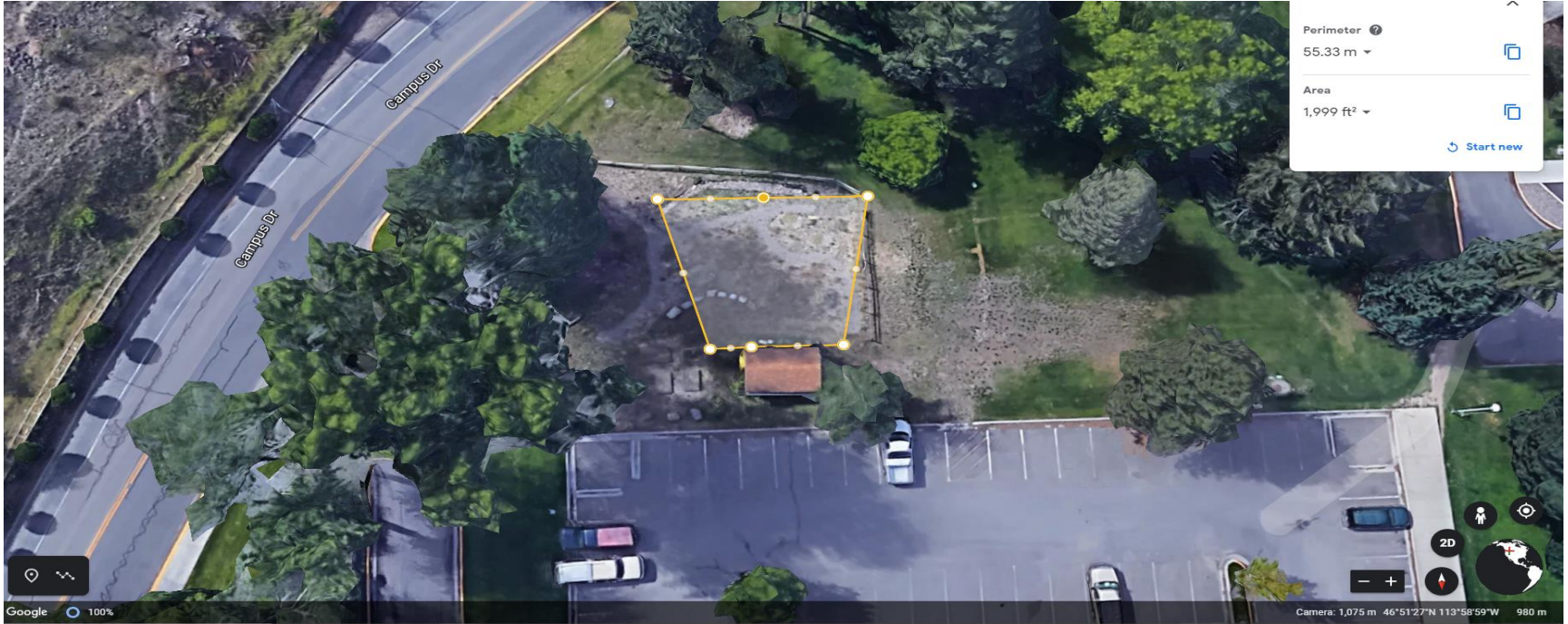


- Model for Montana
- 11 firewise demonstration gardens in Idaho alone
- Community resources

Project Objectives

- ❑ Design and install Montana's first Firewise Demonstration Garden by the summer of 2021
- ❑ Provide an educational resource for firewise landscaping principles, native vegetation, and pollinator benefits
- ❑ Secure funding and infrastructure to ensure long-term garden maintenance and improvement

Designing and Installing the Garden



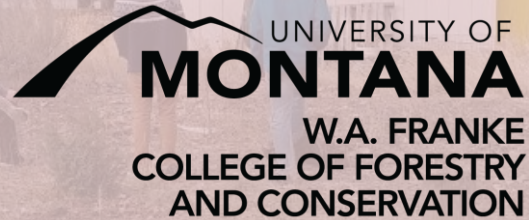
Provide an Educational Resource



Long-term funding and maintenance



Thank you collaborators!



Contact: nathaniel3.miller@umontana.edu