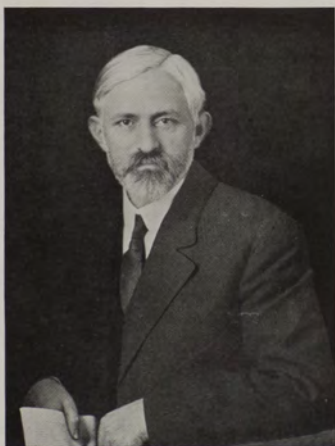




Faculty



CLYDE AUGUSTUS DUNIWAY, Ph. D. . . . Maurice Avenue
President.

A. B., Cornell University, 1892; A. M., Harvard University, 1894; Ph. D., Harvard University, 1897; Instructor in History, Harvard University and Radcliffe College, 1896-97; Assistant Professor of History, Leland Stanford, Jr., University, 1897-99; Associate Professor of History, Stanford University, 1899-1908; Associate Professor of History, University of California, Summer School, 1900; Student in Leipzig, Berlin, and Paris, 1901-02; Professor of History, Stanford University, 1908; President, University of Montana, from September 1, 1908 to September 1, 1912.



The Faculty

(CONTINUED)

W. M. ABER, A. B. 402 Eddy St.

Professor of Latin and Greek.

Graduate from Normal School at Oswego, N. Y., 1872, and from Yale in 1878; Graduate Student at Johns Hopkins, Cornell and University of Chicago; Instructor in Oswego Normal School; Professor of Latin and Greek, University of Utah, 1890-94; Professor of Latin and Greek, University of Montana, since 1895.

FREDERICK C. SCHEUCH, M. E., A. C. . . . 309 S. Fifth St. West

Professor of Modern Languages.

Attended Public Schools, Barcelona, Spain; Graduate, Gymnasium, Frankfurt on the Main, Germany; M. E., Purdue University, 1893; A. C., same, 1894; Secretary of the Faculty, University of Montana, 1895-1909; Professor of Modern Languages, since 1895.

MORTON JOHN ELROD, Ph. D. 205 S. Fifth St. East

Professor of Biology.

B. A., Simpson, 1887; M. A., Simpson, 1890; M. S., Simpson, 1898; Ph. D., Illinois Wesleyan University, 1905; Adjunct Professor of Science, Illinois Wesleyan University, 1888-89; Professor of Biology and Physics, Illinois Wesleyan University, 1889-97; Director, University of Montana Biological Station, since 1899; Professor of Biology, University of Montana, since 1897.

FRANCES CORBIN, B. L. 110 S. Fourth St. West

Professor of Literature.

Chicago Woman's College, 1885-87; New York State Normal School, Graduated, 1888; Student in Vassar College, 1890-92; B. L., Ohio College, 1902; Student in Harvard Summer School, 1904; Teacher of Literature and Principal, Butte High School, 1893-1900; Professor of Literature, University of Montana, since 1900.

WILLIAM D. HARKINS, Ph. D. 521 E. Pine St.

Professor of Chemistry.

A. B. Stanford University, 1900; Ph. D., 1907; Graduate Student, University of Chicago, 1901 and 1904; Graduate Student Stanford University, 1905-06; Assistant in Chemistry, Stanford University, 1898-1900; Instructor in Analytical Chemistry, Stanford University, 1900; Instructor in Chemistry and Physics, University of Montana, 1900-01; Institut für Physikalische Chemie u. Elektrochemie, Karlsruhe, I. B., 1909; Research Associate, Research Laboratory of Physical Chemistry, Massachusetts Institute of Technology, 1910; Expert Chemist, U. S. Department of Justice, 1910-11; Professor of Chemistry, University of Montana, since 1901.



The Faculty

(CONTINUED)

JESSE PERRY ROWE, Ph. D. 319 University Avenue

Professor of Geology.

B. S., University of Nebraska, 1897; M. A., 1903; Ph. D., 1906; Student, University of Oregon, 1893; Graduate Student, University of California, Summer, 1901; Graduate Student, Chicago University, Summer, 1905; Assistant in Geology, University of Nebraska, 1894-97; Fellow and Instructor, 1897-98; Assistant Principal, High School, Butte, 1898-99; Principal, Lincoln School, Butte, 1899-1900; Instructor in Physics and Geology, University of Montana, 1900-01; Director, University of Montana Geological Survey, since 1902; Assistant, United States Geological Survey, 1906; Professor of Physics and Geology, University of Montana, 1901-10; Professor of Geology, University of Montana, since 1910.

WILLIAM FREDERICK BOOK, Ph. D. 402 Eddy Street

Professor of Psychology and Education.

A. B., Indiana University, 1900; Ph. D., Clark University, 1906; Graduate Student, Chicago University, 1901; Fellow in Psychology, Clark University, 1903-06; Principal High School, Princeton, Indiana, 1900-03; Lecturer in Psychology, Summer Quarter, Indiana University, 1907; Special Lecturer, Educational Psychology, Indiana University, Summer Quarter, 1910; Professor of Psychology and Education, University of Montana, since 1906.

JOSEPH HARDING UNDERWOOD, Ph. D., LL. D. Dakota and Arthur

Professor of History and Economics.

B. A., Western College, 1902; M. A., State University of Iowa, 1904; Ph. D., Columbia University, 1907; LL.D., Otterbein University, 1910; Graduate Scholar in Economics, State University of Iowa, 1902-03; Fellow in Economics, State University of Iowa, 1903-04; University Fellow in Sociology, Columbia University, 1904-05; Student, University of Chicago, 1906; Instructor in English and History, Nora Springs (Iowa) Seminary, 1905-06; Professor of History and Political Science, Leander Clark College, 1906-07; Professor of History and Economics, University of Montana, since 1907.

LOUIS CLARK PLANT, M. S. 404 Eddy Street

Professor of Mathematics.

Ph. B., University of Michigan, 1897; Principal, Olive, Michigan, 1889-91; Overisel, Michigan, 1891-93; Graduate Student, University of Chicago, 1897-98, and Summers, 1899, 1900, 1902, 1905, 1906, 1907; M. S., University of Chicago, 1904; Assistant in Mathematics, Bradley Polytechnic Institute, 1898-1900; Associate, *ibid.*, 1900-04; Instructor, *ibid.*, 1904-07; Associate Professor of Mathematics, University of Montana, 1907-08, and Professor of Mathematics, since 1908.



The Faculty

(CONTINUED)

ARTHUR WILLIAM RICHTER, M. M. E. . . . 305 University Avenue
Professor of Engineering, in charge of School of Engineering.

Graduate, University of Wisconsin and Cornell University; M. M. E., Cornell University and University of Wisconsin; Instructor in Engineering, Assistant Professor of Steam Engineering, Assistant Professor of Experimental Engineering, and Professor of Experimental Engineering, University of Wisconsin, 1902-09; Consulting Engineer, Wisconsin State Board of Control, 1908-09; Professor of Engineering, University of Montana, since September 1, 1909.

JOSEPH EDWARD KIRKWOOD, Ph. D. . . . 520 Ford Street
Professor of Botany and Forestry.

A. B., Pacific University, 1898; A. M., Princeton University, 1902; Ph. D., Columbia University, 1903; Fellow in Biology, Princeton University, 1898-99; New York Botanical Garden, 1899-1901; Assistant in Botany, Columbia University Summer School, 1900; Assistant in Biology, Teachers' College, 1900-01; Instructor in Botany, Syracuse University, 1901-03; Associate Professor of Botany, 1903-07, and Professor of Botany, 1907; Assistant Botanist, Department of Investigation, Continental-Mexican Rubber Co., 1907-08; Carnegie Institution, Desert Laboratory, Tucson, 1908-09; Assistant Professor of Botany and Forestry, University of Montana, 1909-10; Professor of Botany and Forestry, since September 1, 1910.

GEORGE FULLMER REYNOLDS, Ph. D. . . . 315 University Avenue
Professor of English and Rhetoric.

Ph. B., Lawrence University, 1898; Ph. D., University of Chicago, 1905; Teacher of English, Weyauwega, Wis., High School, 1898-99; Teacher of English, Chicago Manual Training School, 1900-01; Fellow in English, University of Chicago, 1901-02; Head of English Department, Shattuk School, Fairbault, Minn., 1902-09; Assistant Professor of English and Rhetoric, University of Montana, 1909-10; Professor of English and Rhetoric, since September 1, 1910.

JOHN B. CLAYBERG, LL. B. (Michigan).
Honorary Dean, Professor of Montana Code Practice and Mining and Irrigation Laws.

HENRY WINTHROP BALLANTINE, A. B., LL. B.
Professor of Law, Acting Dean of the Law School.

A. B. Harvard College, 1900; LL. B., Harvard Law School, 1904; Lecturer in Law, University of California, 1905-1909; Assistant Professor of Law, Hastings College of the Law, 1905-1909; Practicing Attorney in San Francisco, 1904-1911; Professor of Law, University of Montana, since September, 1911.



The Faculty

(CONTINUED)

A. N. WHITLOCK, A. M., LL. B.

Assistant Professor of Law.

A. B. University of Kentucky, 1906; A. M. *ibid.*, 1908; Principal, Caldwell High School, Richmond, Ky., 1906; Assistant Professor in English and Assistant in Academy, University of Kentucky, 1906-1908; LL. B., Harvard Law School, 1911; Member of Kentucky Bar, since 1909; Assistant Professor in Law at University of Montana, since September, 1911.

GUSTAV L. FISCHER 419 South Third Street West

Professor of Music.

Musical Student in Hamburg, Weimar, Bückeburg, and Frankfurt; Member of Theodore Thomas Orchestra, St. Louis Choral Symphony Society and World's Fair Symphony Orchestra; Professor of Music, University of Montana, since September 1, 1910.

ROBERT NEAL THOMPSON, B. S. 319 University Avenue

Assistant Professor of Physics.

L. S., University of Nashville, 1905; Grammar Principal, Montgomery Bell Academy, Nashville, 1903-06; Assistant in Biology, University of Nashville, Summer, 1906; Student, University of Chicago, 1906-09; Acting Associate Professor of Physics, Oberlin College, 1908; Instructor in Physics, Chicago University High School, 1909; Instructor in Physics, University of Montana, 1909-10; Assistant Professor of Physics, since September 1, 1910.

ELOISE KNOWLES, Ph. M. South Second Street West

Instructor in Fine Arts.

Boston Art School, 1892-93; Ph. B., University of Montana, 1898; Chase Art School, Shinnecock Hills, 1899; School of Education, University of Chicago, 1904; Art Institute, Chicago, 1904; Columbia University, 1909; Ph. M., University of Chicago, 1910; abroad, summers of 1903, 1906 and 1910; Instructor in Drawing, University of Montana, 1898-1910; Instructor in Fine Arts, since September 1, 1910.

MARY STEWART, A. B. Woman's Hall, University Grounds

Dean of Women and Instructor in Latin and English.

A. B., University of Colorado, 1900; Instructor in State Preparatory School, 1900-01; Principal of Longmont High School, Colorado, 1901-05; Instructor in East Denver High School, 1905-07; Student, Columbia University, Summer of 1908; Dean of Women, University of Montana, since 1907.

GERTRUDE BUCKHOUS, B. S. 206 South Fourth Street West

Librarian.

B. S., University of Montana, 1900; Illinois State Library School, 1900-01; Special Course in Government Documents, Wisconsin State Library Commission, 1902; Librarian, University of Montana since 1902.



The Faculty

(CONTINUED)

JAMES BERYL SPEER, B. A. 629 University Avenue
Registrar and President's Secretary.

B. A., University of Montana, 1908; President's Secretary, 1908-09; Acting Registrar and President's Secretary, 1909-10; Secretary of the Faculty, since September 1, 1909; Registrar and President's Secretary, since September 1, 1910.

EUGENE F. A. CAREY, B. S. 522 Rollins Street
Instructor in Mathematics.

B. S. University of California, 1905; Reader in Mathematics, University of California, 1905; Graduate Student, 1905-09; Assistant in Physics, 1905-07; Instructor in Matriculation Physics, Summer Session, 1907, and Assistant in Mathematics, 1907-09; Instructor in Mathematics, University of Montana, since September 1, 1909.

MABEL ROCKWELL SMITH, M. A. 300 University Avenue
Instructor in Elocution and Physical Culture.

B. A., Western College, 1901, and M. A., 1907; Student Columbia School of Oratory, 1901-03; and Northwestern University, 1907-08; Instructor in Public Speaking and Literature, Campbell College, Kansas, 1903-05; Teacher of Public Speaking and Literature, High School, Toledo, Iowa, 1905-07; Instructor in Elocution and Physical Culture, Dakota Wesleyan University, 1908-09; Instructor in Elocution and Physical Culture, University of Montana, since September 1, 1909.

ROBERT H. CARY, Ph. B. 317 University Avenue
Physical Director.

Student, University of Montana, 1904-06; Ph. B., Yale, 1909; Physical Director, University of Montana, since September 1, 1910.

WILLIAM R. LEW, M. S. Grand Street
Instructor in Engineering.

B. S. Rose Polytechnic Institute, 1907; M. S., 1910; Instructor in Civil Engineering, Rose Polytechnic, 1907-10; Assistant to City Engineer, City of Terre Haute, Ind., 1907-09; Engineer Paris Bridge Co., Paris, Ill., 1909; Instructor in Civil Engineering, University of Montana, since September 1, 1910.

JOHN HOWARD STOUTMYER, Ph. D. 402 Eddy Avenue
Instructor in History and Education.

A. B., Kalamazoo College, 1905; Ph. D., Clark University, 1910; Graduate Student, University of Chicago, 1905-07; Fellow in Psychology, Clark University, 1908-10; Instructor in History and Education, University of Montana, since September 1, 1910.



The Faculty

(CONTINUED)

JOHN WARREN HILL, M. A. 1009 Poplar Street
Instructor in Chemistry.

B. A., University of New Brunswick, 1905; M. A., Yale, 1909; Graduate Student, University of New Brunswick, 1906-07; Graduate Student, Yale, 1908-10; Demonstrator in Chemistry, University of New Brunswick, 1904-05; Principal McAdam Superior School, 1905-06; Principal Gibson School, 1906-08; Instructor in Chemistry, Rutherford Institute, New Haven, 1908-09; Assistant in Chemistry, Yale, University, 1909-10; Instructor in Chemistry, University of Montana, since September 1, 1910.

MARGERY WINNIFRED FEIGHNER, B. A. . . . 315 East Front Street
Assistant Librarian.

B. A., University of Montana, 1908; Student, Library School, Simmons College, 1908-09; Assistant Librarian, University of Montana, since September 1, 1909.

B. R. COLE, A. B.
Instructor in German.

A. B. Oberlin College, 1906; Instructor in German at University of Montana, since September, 1911.

CARRIE CADE PATTON, A. B., B. L. S.
Assistant in Library.

A. B., Northwestern University, 1909; Illinois State Library School, 1911; Assistant in Library, University of Montana, since September, 1911.

GEORGE MERIT PALMER, A. M.
Instructor in English.

Graduate Illinois State Normal University, 1899; A. B., University of Illinois, 1907; A. M., University of Illinois, 1908; Graduate Work, University of Illinois in History, English and Education, 1908-11; Superintendent Schools, Averyville, Illinois, 1897-98, 1899-1901; Teacher of English, Philippine Islands, 1901-04; Superintendent Schools, Milaca, Minn., 1904-07; Instructor in English, Academy, University of Illinois, 1907-09; Instructor in English in Academy and Supervisor of Practice Teaching in English in School of Education, University of Illinois, 1909-11; Instructor in English, University of Montana, since September, 1911.



The Faculty

(CONTINUED)

GEORGE H. CUNNINGHAM, B. S., M. E.

Instructor in Mechanical Engineering.

B. S., Virginia Polytechnic Institute, 1906; M. E., Cornell University, 1908; Instructor in Graphics, Virginia Polytechnic Institute, 1906-07; Engineering Department of Tennessee Coal, Iron & Railroad Co., Ensley, Ala., on Steel Mill and Blast Furnace Construction, 1908-09; Engineering Department, Virginia Bridge and Iron Co., Roanoke, Va., 1909-10; Assistant Superintendent, Power and Mechanical Department, Consolidation Coal Co., Jenkins, Ky., 1911; Instructor in Mechanical Engineering, University of Montana, since September, 1911.

G. A. GROSS.

Instructor in Shop Practice.

Lake Mills High School, 1900; Assistant Foreman, Fargo Creamery Supply Co., 1904-1908; Mechanician, College of Engineering, University of Wisconsin, 1908-1911; Instructor in Shop Practice, University of Montana, since September, 1911.

Special Lecturers in Forestry

C. H. ADAMS, E. M.

Assistant District Forester in Charge of Grazing, District No. 1.

F. E. BONNER

Draftsman, District No. 1.

J. T. JARDINE

Inspector of Grazing, United States Department of Agriculture.

CHARLES W. JUNGBERG

State Forester of Montana.

D. T. MASON, M. F., M. S.

Supervisor Deer Lodge National Forest.

P. J. O'BRIEN

Claims Examiner, District No. 1.

DORR SKEELS

Supervisor Kootenai National Forest.