

## To Keep You in the Know . . . . .

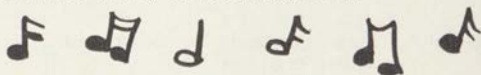
Event	Dress	Hat	Shoes	Purse and Gloves	Coat
Classes	Skirts, sweaters, blouses, simple wool or cotton dresses	Scarf, if needed	Loafers Sandals	Purse, if desired mittens or gloves	Seasonal coat or jacket, raincoat
Athletic Event	School clothes or sporty dress ups	Scarf, if needed	Flats, school shoes	Purse, if desired, mittens or gloves	Yes
Concerts and Plays	Suit, tailored or dressy dresses	No	Heels or dressy flats	Purse, gloves	Not a sport one
Shows	Suit, school clothes, tailored wool	No	Low or heels	Purse if desired mittens or gloves	School coat
Teas-Receptions	Dressy date dress, suit	Yes	Dressy heels	Yes	Dressy
Banquets	Long dinner dress Short dressy one	Find out beforehand from the Chairman. They vary a great deal.			
Firesides Exchange Dinners	Tailored dress Dressy dress	No	Heels or dressy flats	Probably not	If needed
Mixers	School clothes Suit, tailored dress	No	School shoes flats	No purse	School or sport
Formal Dances	Long and sleeveless	No	Dressy heels or flats	Yes	Dressy
Semi-Formal	Long but not so bare	No	Dressy	Yes	Dressy
Informal	Dressy street length	Occasionally	Heels or dressy flats	Yes	Plain coat

# Traditional Songs . . .



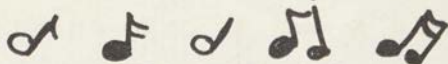
## UP WITH MONTANA

Up with Montana, boys, down with the foe,  
Old Montana's out for a victory;  
She'll shoot her backs around the foeman's line;  
A hot time is coming now, oh brother mine.  
Up with Montana, boys, down with the foe,  
Good old Grizzly'll triumph today;  
And the squeal of the pig will float on the air,  
From the tummy of the Grizzly Bear.



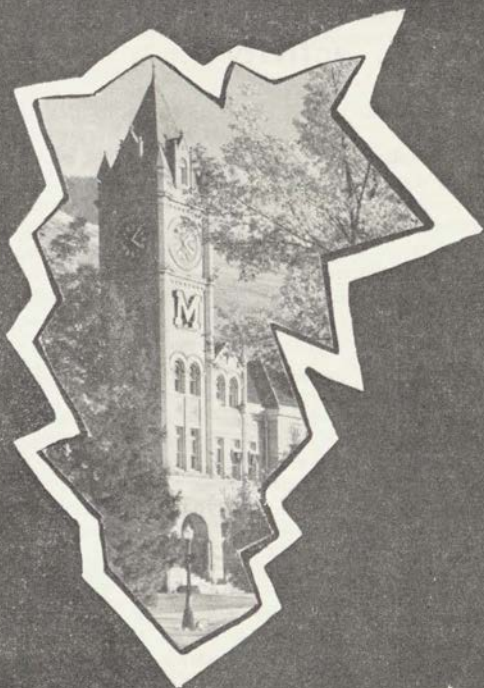
## HAIL COPPER, SILVER, GOLD

Hail copper, silver, gold borne by our warriors  
bold  
It's the flag of the Grizzly Bear.  
See those Bruins tearing their way down the field,  
We know they never will yield, Montana,  
On they go and trample down the foe.  
Let's go Montana, we love the fray,  
The Grizzly fight, fight, fight will bring victory  
Let's go Montana, we'll win today.



## OLD COLLEGE CHUMS

Old college chums, dear college chums,  
The days may come, the days may go;  
But still my heart to mem'ries cling,  
To those college days of long ago.  
Thru youth, thru prime, and when the days  
Of harvest time to us shall come,  
Thru all we'll bear the mem'ries dear,  
Of those college days of long ago.



Time On Your  
Hands

# Nothin' to do?—try an activity . . .

So you like music! Do you realize that M.S.U. has the best school of music in the Northwest? The **symphony orchestra** gives quarterly concerts and plays on special occasions, such as Commencement. The **concert band** has two formal concerts plus several small concerts and an occasional trip. Football season finds the **marching band** and **twirlers** performing on the field. The **A Cappella Choir**, the **University Chorus**, **Jubileers**, and other choral groups unite each spring and Christmas time to present special programs.

If you are interested in publications you will have an opportunity to work on the **Venture**, the **Sentinel** or the **Kaimin**. Venture is an all-school magazine edited by students, which presents short stories, sketches, editorials, essays, and poetry by campus writers. The Kaimin is published by students of the journalism school every Tuesday, Wednesday, Thursday, and Friday. It is distributed to the dormitories and buildings on campus before eight o'clock classes, and is free to all students. After you're well acquainted with college life and are anxious to have in permanent form a concentrated capsule of your school year, you can pick up your Sentinel. This year-book contains your complete year, your friends, profs, classes, traditions, and dances. The Sentinel staff members are chosen spring quarter from the interested students who apply for work in the many divisions—typing, advertising, makeup, etc.



If you like drama, you can drop in on the tryouts held each quarter for **Masquer productions**. Individual effort will give you the part you desire. Besides acting, people are needed to paint flats, put grease paint on play characters, make costumes, and participate in the business end of the play which includes house management, publicity, and ticket sales. If you have a golden voice, **Radio Guild** offers many opportunities.

Like sports? The **Women's Recreational Association**, through its intramural board, sponsors many activities that will give you the opportunity to meet lots of wonderful gals and exercise your muscles. The intramural board is composed of outstanding gals who have been selected to manage sports in which they excel. WRA sponsors social affairs and play day for high schools of the district, and participates in the annual college play day. Every university woman is automatically an associate member of WRA. After earning your first P.C. (participation credit earned for each hour of intramural sports) you are entitled to active membership which entitles you to voting privileges and the right to participate in the social affairs of the organization. Each active member who earns six P. C.'s is awarded an "M" pin, and ten P. C.'s earn her a gold block "M" and membership in the women's M club.



If soothing little arguments settle your nerves, you'll like the **Debate Team**. Any student is eligible to try out for a place on this team, which meets other collegiate groups in hot debate. Individual members successfully enter state oratorical and extemporaneous contests.

There are numerous clubs associated with the different schools on campus. For instance, the

**Homearts Club** for home-ec. majors, that sponsors a style show each year, where members model their own creations.

**Press Club**, the official club for the journalists, sponsors a big fall feed at the Press Club Party and a spring picnic.

Interest in mathematics is a requirement for membership in the **Math Club**—whose activities include discussions of the mathematical field by faculty members, an annual party at Dr. Merrill's home, and a picnic with the **Chemistry Club**.

The American Pharmaceutical Association has a branch on the campus known as the **Pharmacy Club**. They sponsor the annual Pharmacy Ball and promote interest and professional ethics in pharmacy.

The **Ski Club** comes to life after the first snow fall. An annual week-end ski trip to Big Mountain or some other ski run is the highlight of the year's activities.

More in the social line of activities are the **Royaleers**—a square dancing group, the **Bridge Club**, and **South American** dancing classes.

Each year twenty-five freshmen girls are chosen to march with the ROTC boys. These girls along with the older members form what is known as **ROTC Sponsor Corps**.

These are the organized activities on campus open to women, aside from religious groups, student government affairs, and living group participation. Nothing else can be said, except—  
whew!



# Now for the honoraries . . .

## **Alpha Lambda Delta**

Freshman women who have maintained a grade point index of 3.2 ("B" plus) average fall and winter quarters are elected to Alpha Lambda Delta, national honorary which was founded here by the local chapter of the senior scholastic honorary, Mortar Board. The active members encourage high scholarship among freshman women, and at a ceremony in the dorms, fall and winter quarters, present roses to women having a 3.2 average.

## **Spur**

Tanan-of-Spur is an honorary for sophomore women. Each spring twenty-five Spurs are chosen on a basis of dependability, a 2.3 grade average for two quarters, school spirit, neatness, willingness to work, pep, personality, and activities. Activities include dramatics, athletics, music, debate, publications, clubs, and religious groups. An important requirement for eligibility in Spur is that a girl drink only soft drinks during her freshman year. This is also true of her sophomore year, when she is an active Spur.

## **Mortar Board**

This is one of the highest honors a woman can earn on the campus. Members are chosen during their junior year by a unanimous vote of the active chapter and are tapped at an SOS during track week. They are active during their senior year.

Mortar Board members are definitely above average in scholarship, leadership, and service. Sponsoring a training workshop for all campus officers, giving the "Smarty Party," and sponsoring the local Alpha Lambda Delta organization are included in their activities.

## Phi Kappa Phi

Phi Kappa Phi, national scholastic honorary which recognizes students and faculty with superior scholarship in all fields of study, was newly installed on campus last fall. It has replaced Kappa Tau, local scholarship fraternity. Membership in the organization includes the top 5 per cent of the junior class, the top 10 per cent of the graduating senior class and outstanding faculty members. The group publishes a student-faculty directory, the "Grizzly Guide" and offers a scholarship to an outstanding junior.

## Eta Epsilon

Eta Epsilon, women's home economics honorary, promotes home economics on the campus. A member must be of junior standing, have taken at least 24 credits and have maintained a 2.7 grade index in this department. She must have the university average for her entire school career, have no F's on her record, and be active in the Homearts club.

## Phi Chi Theta

Phi Chi Theta, women's business honorary, works with Alpha Kappa Psi, men's business honorary, on Bank Nite and the annual job clinic. They also give a \$20 scholarship to the junior girl having the highest scholarship in business administration, and award a key to the outstanding senior girl majoring in business administration. A

2.5 grade index in bus. ad. is required for membership.





## **Mu Phi**

Mu Phi, women's music honorary, promotes musical interest on the campus, presents a musical convocation to the student body each year, handles the publicity for recitals given by women music students and assists with music meets. Members must have a 3.5 average in music and an over-all university average of 3.0. They are chosen on the basis of scholarship, music participation, campus activities, and character.

## **Theta Sigma Phi**

Theta Sigma Phi, women's journalism honorary, takes an active part in the activities of campus life. Members must maintain a "B" average in the School of Journalism and an all-over average of "C". Each year they sponsor the annual Matrix Table dinner which honors an outstanding co-ed from each class and brings to Missoula noted women journalists.

## **Masquers**

Masquers, drama honorary for men and women, pledges hard-working students with 200 hours (20 points) in two fields of endeavor. With 100 points you reap the highest title—Masquer Royale. The year's program includes variety reviews, an all-school musical and a spring operetta with the music school, and the Little Theatre Festival during Interscholastic.

## **Aquamaids**

Aquamaids is a women's swimming honorary whose members are chosen on the basis of a standard swimming test and interest in the organization. They present an annual water pageant in winter quarter, sponsor intramural and inter-collegiate women's meets and help with high school play day.

## Women's "M" Club

The basic requirements for membership in the Women's "M" club include a junior class standing, a "C" scholastic average and ten participation credits, earned in three team sports, three individual sports, and four elective sports of which not more than two may be interseasonal activities. Girls thus eligible must also meet certain character and leadership requirements set by the "M" club. The club works in co-operation with WRA, sponsoring several social affairs, play days, to which all women students are invited. At their annual "Sno-Party" new members are tapped.

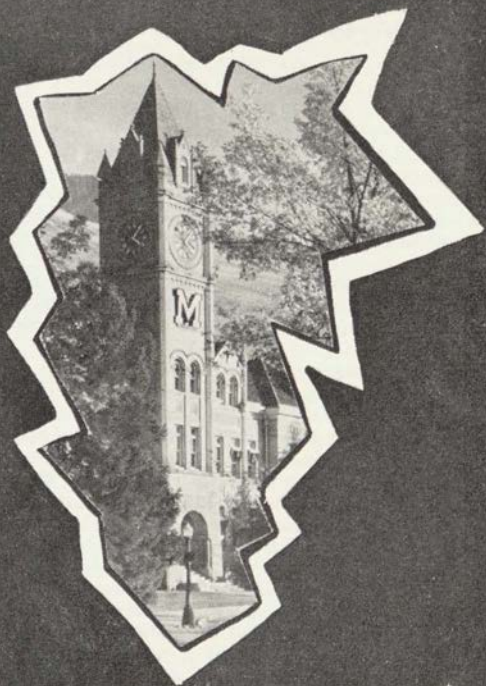
## Opps! What about the studying?

If you plan a study schedule and stick to it, besides studying and belonging to some of these



organizations, you as a grizzly will be able to get good grades and still have extra time for pleasure. Remember both **activities** and **grades** are important for membership in the various honoraries. The two are complimentary, and time must be allotted to each according to individual capacity.

The important thing isn't to "keep up" with anyone else, but just to do your best in both courses and in whatever extracurricular activities you participate.



Time to Govern

## **Your rules—made by you, changed by you, obeyed by you . . .**

As a woman student of Montana State University, you are subjected to certain rules and regulations concerning hours, trips, and housing.

### **Hours . . .**

Freshmen women students shall be in their homes by 10:30 p.m. Sunday, Monday, Tuesday, Wednesday, and Thursday. Upperclassmen shall have the same hours, with the exception of 11:00 p.m. Sunday. On each Friday, Saturday, and on Thursday night of final week, and nights preceeding all University holidays, (Thanksgiving, Memorial Day, and Trackmeet), hours are extended to 1:00 a.m.

**Concert Hours** are given to students who attend concerts, ball games, plays, etc., on school nights. This means that they may stay out after the regular hour if the affair lasts longer, but must return immediately to their houses after it is over.

**Late Per** is another special type of hour regulation. It is granted, under special circumstances involving departmental work, by the Associate Dean of Students. This gives women the privilege of staying out past the regular hours.

**Senior Privileges**, which are 11:30 p.m. hours on week nights, are extended to senior women who have a "C" average with 135 credits. Use of the privilege to the extent of two week nights, excluding Monday night, will not be considered an abuse in ordinary circumstances. As a point of honor, women will inform their housemother before 6:00 p.m. of the night they expect to use their privilege.

### **Ouch! A campus . . .**

A Campus is the usual penalty for an infringement of the above laws. This means that

the girl is restricted to her housing center from 6:00 p.m. to 6:00 a.m., during which time she may have no guests. Campuses can be taken on Friday and Saturday nights only.

Violations for which campuses are given are one late totaling 15 minutes or over, two lates totaling 15 minutes in any one quarter, or three lates whether they total 15 minutes or not in one quarter. The penalty for a broken campus is two consecutive weekends of campus.

A **Deferred Campus** may be obtained by calling the president of AWS, or if she is absent, the vice president. For each night deferred, an extra night of campus will be added. For reasons such as a house or dorm function, University authorized trips, etc., a campus may be deferred with no added penalty.

The penalty for three or more appearances before the board during the school year will be left to the discretion of the board.

**Men are not allowed in women's residences before 4:00 p.m., Monday, Tuesday, Wednesday, and Thursday; 12 noon on Friday and Saturday; and 9:30 a.m. Sunday. On Monday, Tuesday, Wednesday, and Thursday, they are not allowed in women's living groups between 7:30 and 9:30 p.m. College women may not visit the residences of men without approved chaperonage.**

## Shh-h—it's quiet hours . . .

In order to live in closer harmony with your neighbor in your living group, certain house regulations have been made. Quiet hours are the rule from 8:00 a.m. to 12 noon; 1:00 p.m. to 4:00 p.m.; 7:30 p.m. to 9:30 p.m.; and 11:00 p.m. to 7:00 a.m. Radios and typewriters should not be heard in adjoining rooms.



## Goin' home?

As a freshman you are allowed only three weekends a quarter for going home or on other trips. If you earn a 2.4 fall quarter grade average you are exempt from this rule the following quarter. A 2:00 grade average winter quarter exempts you from this rule spring quarter.

When going home, you are required to report back to your respective living group according to University hour regulations. If you are unable to return by the specified time, you are required to notify your housemother.

## Register before visiting . . .

Any time you wish to visit friends or relatives living out of Missoula, **upon receipt of a written invitation**, you must complete an out-of-residence form with your housemother. This permission will be given on weekends only. Any time you leave the campus for more than two hours, you are required to sign out.

If you wish to leave on days other than Friday and Saturday to go on authorized University trips such as debates, musical tours, plays, etc.; ski trips, fraternity weekend parties, visit friends and relatives living in Missoula, or to remain in town during vacation, you must receive permission from the Associate Dean of Students.

The case of any girl failing to sign out or signing out under false pretenses will be brought before the AWS Judicial Board. Failing to sign out for a weekend will result in a campus.

When making trips, you may receive special travel permission from your housemother not more than three times per quarter to return on or before midnight in case of a late bus or train. This permission will be granted only for travel by public conveyance and if a request is made before departure.



## Policies . . .

Unless requested for consideration, lates will not be discussed singly until they total a campus.

If a girl calls in or notifies her housemother when she is unable to return to her residence by the specified time, this will be taken into consideration when a campus results.



A rate of 35 miles per hour should be allowed for traveling time and for any emergencies which might arise when a woman student is returning to her

residence. In giving campuses, this rate will be considered when a girl returns late to her residence.

The above rules are applicable to regularly enrolled undergraduate women students during the regular academic year and Missoula women who come under University jurisdiction. All exceptions to the above rules will be left to the discretion of the AWS Executive Board and the Standards Committee with the approval of the Associate Dean of Students.



# The set up . . .

Associated Women Students — your student government—is composed of an Executive Board, Judicial Board and six committees.

**Executive Board** is composed of the officers of AWS and a representative from each women's living group on campus. This board meets every Tuesday afternoon at 4 p.m. to plan activities for you and to serve as your representative student government.

**Judicial Board** considers all infractions of hour regulations and is composed of the AWS officers and two roving representatives from women's living groups. It meets on Mondays at 4 p.m.

**Publicity Committee** makes all the posters and signs for AWS sponsored events.

**Hospitality Committee** acts as the official hostess for campus visitors. Members greet callers, show them the campus and strive to make their stay here a pleasant one.

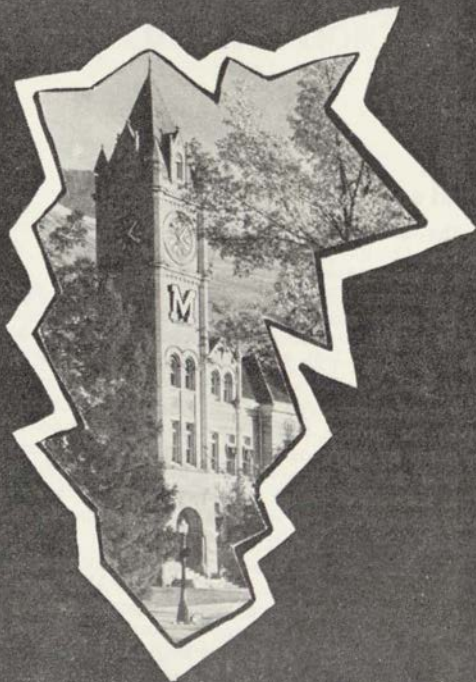
**Counsellor-Counsellor Committee** sponsors the big-little sister program which includes the party in the fall. Its job is a big one as it helps all new students feel a part of campus life.

**Faculty Committee** sponsors the Easter egg hunt on the oval for the faculty children. It also plans informal teas which enable faculty and students to become better acquainted.

**Charm and Beauty Committee** keeps girls in the know with the current styles.

**Lantern Parade Committee** sponsors the annual Lantern Parade in the spring which honors all graduating senior women.

Applications for these committees are distributed every fall. The AWS officers have extended a cordial invitation to you to attend the AWS Executive Board meetings .



Time to Begin

## And so . . .

**The time to begin is now**—whether you find yourself in the position of the unsure freshman or the wise-cracking upperclass woman.

It is never too late to take in a meeting of that club you've always had it in the back of your mind to join. Choose your activities as you do your clothes—with taste and forethought—as to how well you both suit one another.

It's not necessary to be an expert in the activity, sport, or project that your club is organized to perform or carry out. It is much more important to you and of more value to the organization, if you, instead of being an expert, have a sincere interest in what you are doing and the time to do it well.

The clubs, the various activities and honoraries, and the elective offices are all here at MSU waiting for you, in addition to the opportunities for learning and for obtaining a career. If you haven't all ready, the time to begin is now.

# ASSOCIATED WOMEN STUDENTS CONSTITUTION



## Preamble

We, the women students of Montana State University, acting under authority granted by the administration, in order to assume individual and community responsibility in the life and conduct of women students and believing that there is honor and dignity in student government, do ordain and establish this Constitution of the Associated Women Students of Montana State University.

## Article I

### Name

The name of this organization shall be the "Associated Women Students of Montana State University."

## Article II

### National Affiliation

This organization is affiliated with the Intercollegiate Association of Women Students.

## Article III

### Membership

#### Section 1:

All women students of Montana State University shall be ipso facto members of this organization and shall be governed by the constitution.

#### Section 2:

The Associate Dean of Students shall act as adviser to this organization.

## Article IV

### Organization

#### Section 1: Executive Board

- a. The Executive Board shall be composed of the four elected officers; one representative from each sorority and Synadelphic; two representatives from each women's dormitory; one repre-

sentative each from WRA, Mortar Board, Tanan-  
of Spur, Panhellenic, and the off-campus women.

b. The Executive Board shall have executive, leg-  
islative and judicial powers.

1. The Executive Board shall have the author-  
ity to make rules and regulations, and  
other pertinent legislation pertaining to  
women students. It shall have the power  
to interpret and enforce such legislation.
2. The Executive Board shall have the author-  
ity to take action regarding infringement of  
legislation. This action shall be taken by  
the Executive Board itself or by the Judicial  
Board.
3. The Executive Board shall foster specific  
activities which contribute to high academic  
standards, and shall promote activities  
which create opportunities for experience  
in self-government.

c. Qualifications and duties of representatives:

1. All representatives shall have at least  
sophomore standing at the time of the regu-  
lar election of officers, with the exception  
of representatives from the freshmen dormi-  
tories.
2. All representatives are obliged to submit  
reports of any AWS rule violations to the  
Judicial or Executive Board. Deliberate  
failure to do this shall constitute grounds  
for removal from office by the Executive  
Board.
3. A representative shall send a substitute if  
she is unable to attend a meeting. The  
substitute will have the power to vote. A  
representative absent without a substitute  
obligates the organization she represents  
to a 25¢ fine, payable to the secretary.
4. All Board members shall attend the first  
two meetings in spring quarter in an ad-  
visory capacity.

Section 2: Executive Council

- a. The Executive Council shall consist of the  
four officers of the Associated Women Stu-  
dents and the Associate Dean of Students.
- b. The Executive Council shall meet regularly  
to discuss policies affecting all women stu-  
dents and to hear all cases of discipline  
not delegated to other authorities.

Section 3: Judicial Board

- a. The Judicial Board shall be composed of the  
four officers and two representatives from the  
Executive Board appointed each week by the



vice-president. The Judicial Board shall conduct preliminary hearings of AWS violations and make recommendations to the Executive Board. The vice-president shall preside over the Judicial Board.

- b. Each member of the Judicial Board shall have one vote.

## Article V

### Officers

#### Section 1:

The officers of this organization shall be a president, vice-president, secretary, and a treasurer. All executive authority shall be vested in the president. In case of absence of this officer, such authority shall devolve upon the vice president, the secretary, or the treasurer in that order named.

#### Section 2:

The officers shall assume their duties at the first meeting in the spring quarter, but shall attend meetings from the time of election until they take over their duties. The president shall remain on the Board spring quarter in an advisory capacity.

#### Section 3: Qualifications and duties of officers

##### a. President

1. The president of Associated Women Students shall be of junior standing at the time of the regular election and shall served as a voting member of the Board one year previously. She shall have a scholastic average of at least a C.
2. The president shall preside over all meetings of the Associated Women Students, the Executive Board, and the Executive Council.
3. The president shall appoint chairmen of committees, appointments subject to approval by the Executive Board. The Counselor-Counselee chairman and the Handbook chairman are elected by the Executive Board from the candidates submitted by the women's living groups.

##### b. Vice-President

1. The vice-president shall be of at least sophomore standing at the time of the regular election and shall have a scholastic average of at least a C.
2. The vice-president shall officiate in the absence of the president, and shall succeed to the office of president in the event that office is vacated.
3. The vice-president shall be chairman of the Judicial Board.

c. Secretary

1. The secretary shall be of at least sophomore standing at the time of the regular election and shall have a scholastic average of at least a C.
2. The secretary shall keep a record of the proceedings of AWS, of the Executive Board, and of the Executive Council.
3. The secretary shall take care of all correspondence of AWS.

d. Treasurer

1. The Treasurer shall be of at least sophomore standing at the time of the regular election and shall have a scholastic average of at least a C.
2. The treasurer shall make monthly reports to the Executive Board of all funds received and expended and all debts and balances as submitted to her by the auditor of the student organizations and in accordance with her own books.
3. The treasurer must sign all requisitions, contracts, and payments after they have been approved by the Board. Loans from the students' loan fund will be made by the president upon recommendation of the Associate Dean of Students and the Business Manager of the University.
4. The treasurer shall be in charge of primary and general elections.

## Article VI

### Meetings

#### Section 1:

Meetings of the association shall be held at the discretion of the president or at the request of twenty-five members of the association.

#### Section 2:

Regular weekly meetings of the Executive Board shall be held at a time convenient to the majority of the Board, and additional meetings may be held upon the request of the President.

#### Section 3:

Meetings shall be conducted in accordance with Roberts' Rules of Order.

#### Section 4:

Meetings shall be considered properly advertised if notices of such meetings appear in the Kaimin and are posted on the bulletin board one day before the meeting.

## Article VII

### Elections

#### Section 1: Primary Election

- a. Primary election shall be held one week before the general election.
- b. All candidates for office must present a petition bearing ten signatures to the secretary of AWS not later than one week preceding the scheduled primary election.
- c. The two candidates for each office receiving the highest number of votes in the primary election shall become candidates for office in the general election.
- d. The primary election shall be eliminated if there are only two petitions filed for each office.

#### Section 2: General Election

- a. The officers shall be elected for a period of one year at a regular general election the first week of March.
- b. A majority vote shall be required for election.

#### Section 3:

In the event of a vacancy in the offices of vice president, secretary, or treasurer, the office shall be filled by a member of the Executive Board elected by a majority vote of the Board.

## Article VIII

### Finances

The finances of the association shall be supplied from an amount appropriated by Central Board according to its budget.

## Article IX

### Amendments

#### Section 1:

The Constitution may be amended by a majority vote of all members. This vote may be taken at a mass meeting of the Association or by polling the living groups.

#### Section 2:

Proposed amendments to the Constitution shall be posted at least five days before a mass meeting or shall be read to each living group one week prior to the voting.

## God's Minute

I have only just a minute  
Only 60 seconds in it  
Forced upon me, can't refuse it  
Didn't seek it, didn't choose it  
But it's up to me to use it  
I must suffer if I lose it  
Give account if I abuse it  
Just a tiny little minute  
But eternity is in it.

