

## Now and Thens

Don't get discouraged and close the book after that stiff, formal chart of clothes, there's more. There are some outfits that you won't be wearing every day, or even once a week, but will be just the thing now and then. If you're not afraid of an occasional wondering look, bring your Bermuda shorts—socks and all. They're favorites almost all year 'round.

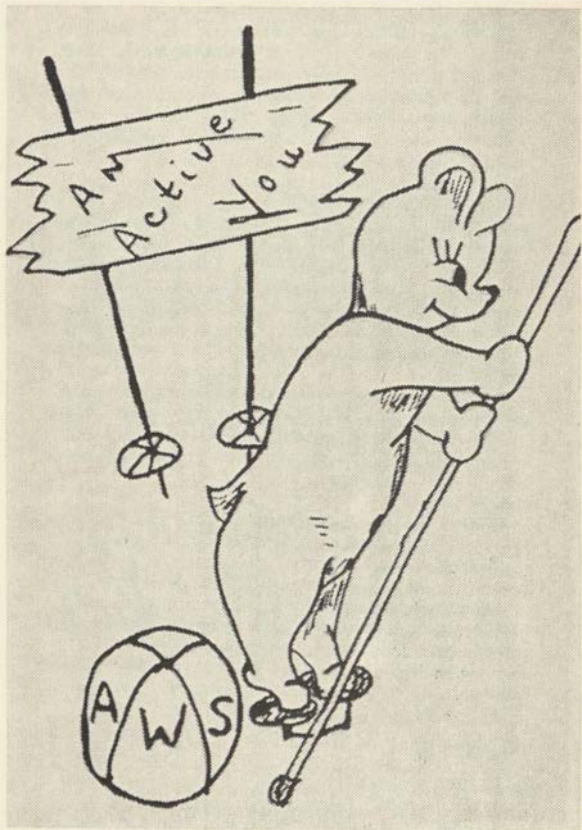
For more conservative girls, pedal pushers and tapered pants are "en vogue" for picnics, biking, or just casual wear. If you're searching for that first tan, don't forget your swimming suit. You won't use it much during winter quarter (except for Thursday night swimming), but come spring and sun, you'll be glad you brought it.

Speaking of winter quarter, skiers—don't forget your ski togs. There are many fine ski areas close for those weekends and Friday afternoon ski classes. Besides, what is a better way to spend a Saturday afternoon than on a toboggan or skating party?

Tennis anyone? Shorts and blouses are court garb and don't forget your racket and balls. Spring quarter also sees lots of golf, hiking, and horse back riding, so come prepared for many good times.

One last hint: Many of the functions you will no doubt be attending will be costume parties. There are circus parties, Hawaiian parties, the big Sadie Hawkins dance, and many more. Come well prepared with costumes and lots of ideas. You'll never regret having them.

If you're still a little confused about what to bring or buy, wait 'til you see what you'll need. Spend wisely. The money you save may be your parents, and the good times you have will be your own.



# Lots To Do For An Active "U"

Activities of all kinds are yours for the asking. Where your interest lies, you'll find enjoyment. Here's your opportunity to meet people, make friends, have fun, gain experience, and contribute to a worthwhile organization, all at the same time.

One of the first groups with which you will come in contact is the youth group of your church. Here is a chance to find people with ideas and beliefs similar to yours; they will be eager to make you a part of the organization. These clubs include **Roger Williams Fellowship**, Baptist; **Newman Club**, Catholic; **Christian Science Organization**; **Canterbury Club**, Episcopalian; **Lutheran Student Association**; **Wesleyan**, Methodist; **Deseret Club**, Mormon; **Westminster Foundation**, Presbyterian. Get in on the ground floor of these organizations and you'll find lots of wonderful friends.

**Grizzly Growlers**, the freshman pep club, is an excellent place to show your enthusiasm and school spirit. A little work and lots of play (especially during football season) will give you welcome relaxation from your everyday chores.

The **Ski Club** is open to any and all who like to ski; also those who like to try. Main events in the club include the Ski Carnival, an annual trip to Big Mountain, and wonderful ski weekends.



The **Debate Organization** sponsors the debates at Interscholastic and enters teams in various tourneys. Interested beginners, as well as old hands at the game, are invited to take part.

A group which adds variety and information to your campus life is **Montana Forum**. This is a faculty-

student discussion group which meets at a weekly luncheon and discusses subjects of interest to the participants. It's an informal way to learn important and eye-opening facts.

Musical students will be glad to hear of the **symphony orchestra**, **concert band**, **marching band**, **twirlers**, **A Capella choir**, **wind ensemble**, **brass choir**, **clarinet**, **choir**, **freshman sextette**, and the **University Chorus**. If your talent runs along these lines, take your pick.

For those who enjoy journalism or publication work, or just have a nose for news, there are unlimited opportunities available on the **Sentinel**, the University yearbook; the **Kaimin**, the University paper with issues Tuesday through Friday every week; and the **Venture**, a quarterly publication made up of outstanding student literary compositions. Jobs here range from writing stories and reading copy, to selling ads and bringing in the news.

Are you the outdoor type? Is it possible that you're a fairly good horseback rider? If so, the **University Saddle Club** would like to see you at all of its meetings. Exercise and enjoyment enter into this picture.

Those who are true lovers of the art of square dancing will no doubt want to join **Royaleers**. Anyone may try-out for admittance and members find that their schedule of tours and exhibitions makes for much fun for all.

Everyone interested in dramatics, staging, costuming, and producing, as well as acting, is invited to help with the **Masquers** productions. When you have one hundred participating hours in this field, you are eligible for membership in **Masquers**.

Girls who love to fly will be glad to hear of the **Flying Club**. It is open to anyone over 15 years of age and even owns its own plane.

There are quite a number of clubs for "majors," as nearly every school on campus has at least one organization. You'll find the **Liberal Arts Club**, the

**Future Teachers of America, the Forestry Club, the Math Club, the History Club, the Chemistry Club, the Home Arts Club, the Pharmacy Club, the Bacteriology Club, the Press Club, and the Wildlife Club.**

If you happen to be interested in politics and are proud of your party (as you should be), try the **Republican** or the **Democrat Club**.

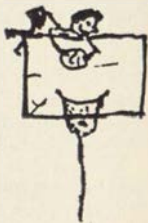
Foreign-minded students will find a source of information through personal contact in the **International Relations Club**.

If your main field is that of radio, you will probably be interested in joining the **Radio Guild**.

The **Independents**, an organization for non-frat students, sponsors exchange dinners and firesides, as well as meetings for sociability.

A non-denominational Christian fellowship, the **Student Christian Association**, is an interesting group which has faculty firesides and sponsors Interchurch Council and Freshman Camp.

Sportsminded girls will want to belong to the **Women's Recreational Association**. Through its intramural board, it sponsors many activities which present opportunities for meeting many marvellous girls and getting lots of exercise. The intramural board is composed of outstanding girls who have been selected to manage sports in which they excell. WRA sponsors social affairs and play day for high schools of the district, and participates in the annual college play day. Every University woman is automatically an associate member of WRA. After earning your first P.C. (participation credit earned for each hour of intramural sports), you are entitled to active membership which entitles you to voting privileges and the right to participate in the social affairs of the organization.



In addition to these organized activities on campus

which are open to women, you will find yourself involved in student government affairs and living group participation. May we repeat, "Lots To Do For An Active You."

## An Honor For You

Fun is all very well in its place, but when it comes time to settle down to serious school work, it is wise not to debate over the question "to study or not to study." If you plan a study schedule and stick to it, you will be able to get good grades and still have extra time for pleasure. Both grades and activities are important for membership in the various honoraries, and time must be allotted to each according to individual abilities. Do your best both in your

courses and extra-curricular activities, and there will be honors for you.



## Alpha Lambda Delta

Freshmen women who have maintained a grade point index of 3.5 (B plus) average fall and winter quarters are elected to Alpha Lambda Delta, national honorary which was founded here by the local chapter of the senior scholastic honorary, Mortar Board. The active members encourage high scholarship among freshmen women, and at a ceremony in the dorms, winter and spring quarters, present roses to those women having earned a 3.5 average for the previous quarter.



## Mortar Board

The active members of this honorary are seniors who are chosen during their junior year by an unanimous vote of the active chapter on the basis of above-average scholarship, leadership, and service. They are tapped at an SOS in the spring. Some of their activities include sponsoring a training workshop for all campus officers, giving the "Smarty Party" for those girls in each class receiving the top grades during fall quarter, and sponsoring the local Alpha Lambda Delta organization. Being chosen as a member of Mortar Board is definitely one of the highest honors which can be earned by a University woman!



## Spur

Dependability, spirit, neatness, willingness to work, pep, personality, co-operation, and participation in activities, plus a 2.3 grade point average for 2 quarters are the main qualifications by which girls are chosen to be members of Tanan-of-Spur, sophomore women's honorary. Activities include dramatics, athletics, music, debate, publications, clubs, and religious groups. The MSU chapter of Spur has a "no drinking" rule for active Spurs, and as one of the qualifications on which girls are chosen to become active Spurs. New members are tapped at the SOS during Interscholastic.

## Phi Kappa Phi

Phi Kappa Phi is a national scholastic honorary which recognizes students and faculty with superior scholarship in all fields of study. Membership in the organization includes the top 5 per cent of the junior class, the top 10 per cent of the senior class

and outstanding faculty members. The group publishes a student-faculty directory, the "Grizzly Guide" and offers a scholarship to an outstanding junior each year.

## **Phi Chi Theta**

Phi Chi Theta, women's business honorary, works with Alpha Kappa Phi, men's business honorary, on Bank Nite and the annual job clinic. A 2.5 grade index in business administration is required for membership in this honorary, which gives a \$25 scholarship to the junior girl with the highest scholarship in business administration and awards a key to the outstanding senior girl majoring in business administration.

## **Beta Gamma Sigma**

This is an honorary based completely on scholarship. Those chosen must be in the upper 10 per cent of all senior business students and the upper 3 per cent of all junior business students. Members are initiated before the annual Business Administration banquet.

## **Eta Epsilon**

Women of junior standing with 24 credits, a 2.7 grade index in the department of Home Economics, the university average for her entire school career, no F's on her record and an active interest in the Home-Arts Club are eligible to belong to Eta Epsilon, which promotes home economics on the campus.

## **Theta Sigma Phi**

This is a women's journalism honorary which takes an active part in J-School activities. Every year this group sponsors the Matrix Table dinner which honors an outstanding co-ed from each class and brings noted women journalists to Missoula. A "B" average



in journalism and a "C" over-all average must be maintained for membership in this honorary.

## **Mu Phi**

Women with a 3.5 average in music and an over-all university average of 3.0 are eligible to be members of Mu Phi, music honorary. Their activities include presenting a musical convocation to the student body, handling the publicity for recitals given by women music students and assisting with music meets. Members are chosen on the basis of scholarship, music participation, campus activities, and character.

## **Masquers**

Masquers is a drama honorary for men and women which pledges students who have put in 200 hours (20 points) in 2 fields of endeavor. Masquers Royale is the highest title, given to students who have 100 points. Various activities participated in by Masquers besides major productions are variety reviews, the Little Theatre Festival during Inter-scholastic, and an all-school musical and spring operetta with the music school.

## **Aquamaids**

Aquamaids is a swimming honorary for women who are outstanding swimmers. New members are chosen by vote of the old members after tryouts during fall quarter. They present an annual water pageant in the spring and sponsor intramural and inter-collegiate women's meets.

## **Women's "M" Club**

Junior women having a "C" scholastic average and ten participation credits, earned in three team sports, three individual sports, and four elective

sports of which not more than two may be inter-seasonal sports, are eligible to become members of the "M" Club, providing they meet the character and leadership standards set by the club. The "M" Club works with WRA, sponsoring several social affairs and play days. New members are tapped at the annual days. New members are tapped at the annual "Santa Party."

## **Jubileers**

Jubileers is a singing group composed of twenty of the best singers in the A Capella Choir. These vocalists not only have singing talent, but a tremendous amount of poise, personality, and stage character. This group furnishes entertainment for various campus events, besides making an annual tour throughout the state.

## **Angel Flight**

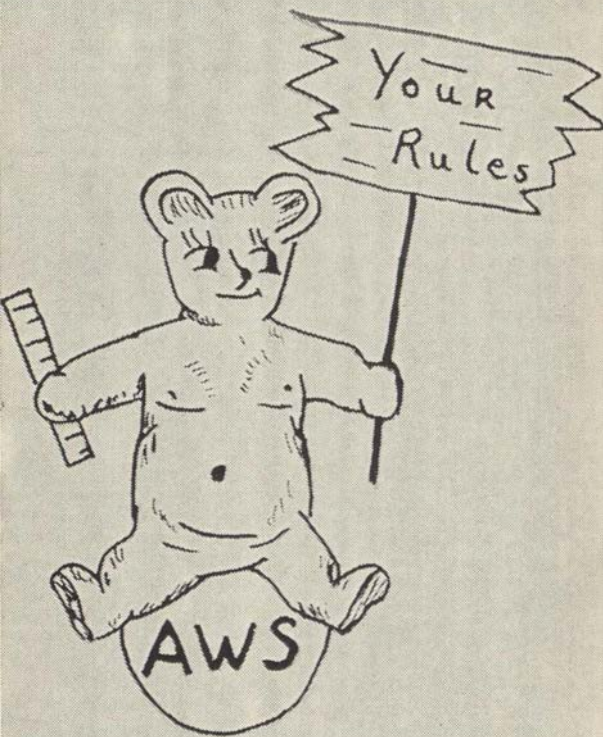
Each fall, twenty-five Freshmen girls are chosen on the basis of personality and attractiveness by the ROTC members for this honorary. These girls, along with the old members, march in reviews, etc., sponsored by the ROTC.

## **Junior Sponsor**

Each year about 15 sophomore girls are chosen to be Junior Sponsors and counsel the Freshmen girls in the dorms for the following year. Choices are made on the basis of personality, activities, interest in the University, scholarship, and counseling ability.

## **Kams and Dregs**

This organization is composed of the "wits" of the campus. At sporting events, they promote school spirit by their clever yells and gimmicks. New members are chosen in the fall of the year by vote of the present members. Only juniors and seniors are eligible.



# Your Rules, Made and Obeyed by You

## Hours

Sunday, Monday, Tuesday, Wednesday and Thursday of each week, all freshman women shall be in their respective homes by 10:30 p.m. Upperclassmen will observe the same hours with the exception of 11 p.m. on Sunday. The hours on weekends, Friday and Saturday, on the Thursday of final week, and nights preceding all-University holidays, Thanksgiving, Memorial Day, and trackmeet, will be 1 a.m.

**Concert hours** are given to those attending concerts, ball games, plays, etc., on school nights, and mean you may stay out after the regular hour providing that the affair lasts longer than the 10:30 deadline. You must return **immediately** to your house when the affair is over.

**Late Per** is another type of special hour regulation. It is granted under special circumstances involving departmental work, by the Associate Dean of Students, and gives women the privilege of staying out past the regular hour.

**Senior Privileges** allow senior women who have a "C" average with 135 credits plus 6 P.E. credits to stay out an extra hour, 10:30 until 11:30, two nights a week excluding Monday night. Out of consideration to their housemother, women will inform her before 6 p.m. on the night they expect to use this privilege.

## A Campus

A **Campus** is inflicted upon a person who does not abide by the rules and regulations listed above. A campus is taken on Friday and Saturday nights, only, and means that the girl is restricted to her house from 7 p.m. until 6 a.m. during which she may not receive guests. Campuses are given for one late of

15 minutes or more, two lates totalling 15 minutes in any one quarter, or three lates whether they total 15 minutes or not in any one quarter.

A **broken campus** results in two consecutive week-ends of campuses.

A **deferred campus** will be given for house or dorm functions, or University authorized trips and no added penalty will be inflicted. But for each night deferred for other reasons an extra night of campus will be added. A deferred campus may be obtained from the president of AWS or, if she is absent, the vice-president.

The penalty for three campuses during a quarter will be left to the discretion of the executive board.

## **Quiet Hours**

Quiet hours are the rule from 8 a.m. to 12 noon; 1 p.m. to 4 p.m.; 7:30 to 9:30 p.m. and 11 p.m. to 7 a.m. on weekdays except the evening hours on Friday. Saturday quiet hours are from 8 a.m. to 11 a.m. Sunday quiet hours are from 8 a.m. to 11 a.m., and 7:30 p.m. to 9:30 p.m. Radios and typewriters should not be heard in adjoining rooms.



Men are not allowed in women's residences before 4 p.m. Monday, Tuesday, Wednesday and Thursday; 12 noon Friday and Saturday; and 9:30 Sunday. On Monday, Tuesday, Wednesday and Thursday, they are not allowed in the dormitories between 7:30 and 9:30 p.m., except to wait in the foyer for their dates. College women may not visit the residences of men without approved chaperonage.

## **About the Drinking of Alcoholic Beverages**

"The possession or consumption of intoxicating liquor in the following circumstances or places is contrary to University standards: by University stu-

dents, visitors, or guests (1) when they are under 21 years of age, or (2) with or in the company of such persons of such age, or (3) with drunkenness, disorderly conduct, or the appearance thereof; and by anyone (1) on the campus or University property, except that University family dwellings are governed by separate rules, or (2) at University affairs including athletic events, or (3) at the quarters or gathering of students.

Permitting or inviting a violation of the foregoing is itself a violation of these standards; and, at the places at which the possession or consumption of liquor is forbidden, all persons under its influence, possessing it, or evidencing disorderly conduct must be excluded."

## Going Home?

As a freshman you are allowed only three weekends a quarter for going home or on other trips. If you earn a 2.5 grade average fall quarter, you are exempt from this rule the following quarter. A 2.0 grade average exempts you from this rule spring quarter.

When going home you must fill out a slip in the office that gives you permission to leave. You are required to report back to your respective living group according to the University hour regulations. If you are unable to return by the specified time, you



are required to notify your housemother.

Any time you wish to visit friends or relatives living out of Missoula, **upon receipt of a written invitation** you must fill out an out-of-residence form with the head resident. This permission will be given on week-ends only.

If you wish to leave on days other than Friday and Saturday to go on authorized University trips



such as debates, musical tours, plays, ski trips, fraternity weekend parties, visit friends and relatives living in Missoula, or to remain in town during vacation, you must receive permission from the Associate Dean of Students.

The case of any girl failing to sign out, or signing out under false pretenses, will be brought before the AWS Judicial Board. Failing to sign out for a weekend will result in a campus.

When making trips, you may receive special travel permission from the head resident not more than three times a quarter to return on or before midnight in case of a late bus or train. This permission will be granted only for travel by public conveyance and if the request is made before departure.

Any time in the afternoon you leave campus for more than two hours, you are required to sign the sign-out register. At night you must always sign out when you leave the dorm.

## Policies

Unless requested for consideration, lates will not be discussed singly until they total a campus.

If a girl calls in or notifies the head resident when she is unable to return to her residence by the specified time, this will be taken into consideration when a campus results.

At least one extra hour of travel time should be allowed for any emergencies which might arise when a woman student is returning to her residence. In giving campuses, each case will be considered individually when a girl returns late to her residence.

The above rules are applicable to regularly enrolled undergraduate women students during the regular academic year and Missoula women who come under University jurisdiction. All exceptions to the above rules will be left to the discretion of the AWS Executive Board and with the approval of the Associate Dean of Students.

## **The Relationship of Judicial Council To AWS**

In cases involving violations of AWS rules exclusively, such as extreme hour violations, AWS has complete jurisdiction. In cases involving violations of University standards related to drinking exclusively, judicial council has complete jurisdiction. However, in cases where there are violations of both AWS rules and University drinking standards, a combined board selected from the officers of AWS and the women's board of judicial council will function.

In some cases either the AWS officers or women's board may ask a representative from the other organization to help in handling a particular case. This person would probably be the president of AWS or the chairman of women's board.

Since both of the organizations handle each case individually, the kind of board selected to handle the case will depend on the nature and extent of the matter involved.

So you can know how AWS functions, here is the constitution.

# CONSTITUTION

## ASSOCIATED WOMEN STUDENTS



### Preamble

We, the women students of Montana State University, acting under authority granted by the administration, in order to assume individual and community responsibility in the life and conduct of women students and believing that there is honor and dignity in student government, do ordain and establish this Constitution of the Associated Women Students of Montana State University.

### Article I

#### Name

The name of this organization shall be the "Associated Women Students of Montana State University."

### Article II

#### National Affiliation

This organization is affiliated with the Intercollegiate Association of Women Students.

### Article III

#### Membership

##### Section 1:

All women students of Montana State University shall be ipso facto members of this organization and shall be governed by the constitution.

## Section 2:

The Associate Dean of Students shall act as adviser to this organization.

## Article IV Organization

### Section 1: Executive Board.

- a. The Executive Board shall be composed of the four elected officers; one representative from each sorority and Synadelphic; two representatives from each women's dormitory; one representative from Panhellenic.
- b. The Executive Board shall have executive, legislative and judicial powers.
  1. The Executive Board shall have the authority to make rules and regulations, and other pertinent legislation pertaining to women students. It shall have the power to interpret and enforce such legislation.
  2. The Executive Board shall have the authority to take action regarding infringement of legislation. This action shall be taken by the Executive Board itself or by the Judicial Board.
  3. The Executive Board shall foster specific activities which contribute to high academic standards, and shall promote activities which create opportunities for experience in self-government.
- c. Qualifications and duties of representatives:
  1. All representatives shall have at least sophomore standing at the time of the regular election of officers, with the exception of representatives from the freshmen dormitories.
  2. All representatives are obliged to submit reports of any AWS rule violation to the Judicial or Executive Board. Deliberate failure to do this shall constitute grounds for removal from office by the Executive Board.

3. A representative shall send a substitute if she is unable to attend a meeting. The substitute will have the power to vote. A representative absent without a substitute obligates the organization she represents to a 25c fine, payable to the treasurer.
4. All Board members shall attend the first two meetings in spring quarter in an advisory capacity.

## Section 2: Executive Council.

- a. The Executive Council shall consist of the four officers of the Associated Women Students and the Associate Dean of Women.
- b. The Executive Council shall meet regularly to discuss policies affecting all women students and to hear all cases of discipline not delegated to other authorities.

## Section 3: Judicial Board.

- a. The Judicial Board shall be composed of the four officers and two representatives from the Executive Board appointed each week by the vice-president. The Judicial Board shall conduct preliminary hearings of AWS violations and make recommendations to the Executive Board. The vice-president shall preside over the Judicial Board.
- b. Each member of the Judicial Board shall have one vote.

## Article V Officers

### Section 1:

The officers of this organization shall be a president, vice-president, secretary, and a treasurer. All executive authority shall be vested in the president. In case of absence of this officer, such authority shall devolve upon the vice-president, the secretary, or the treasurer in that order named.

## Section 2:

The officers shall assume their duties at the first meeting of the spring quarter, but shall attend meetings from the time of election until they take over their duties. The president shall remain on the Board spring quarter in an advisory capacity.

## Section 3: Qualifications and duties of officers.

### a. President

1. The president of Associated Women Students shall be of junior standing at the time of the regular election and shall have served as a voting member of the Board one year previously. She shall have a scholastic average of at least a C.
2. The president shall preside over all meetings of the Associated Women Students, the Executive Board and the Executive Council.
3. The president shall appoint chairmen of committees, appointments subject to approval by the Executive Board. The Counselor-Counselee chairman and the Handbook chairman are elected by the Executive Board from the candidates submitted by the women's living groups.
4. The president shall represent AWS at Judicial Council when called upon.

### b. Vice-President

1. The vice-president shall be of at least sophomore standing at the time of the regular election and shall have a scholastic average of at least a C.
2. The vice-president shall officiate in the absence of the president, and shall succeed to the office of president in the event that office is vacated.
3. The vice-president shall be chairman of the Judicial Board.



c. Secretary

1. The secretary shall be of at least sophomore standing at the time of the regular election and shall have a scholastic average of at least a C.
2. The secretary shall keep a record of the proceedings of AWS, of the Executive Board, and of the Executive Council.
3. The Secretary shall take care of all correspondence of AWS, including IAWS correspondence.

d. Treasurer

1. The Treasurer shall be of at least sophomore standing at the time of the regular election and shall have a scholastic average of at least a C.
2. The treasurer shall make monthly reports to the Executive Board of all funds received and expended and all debts and balances as submitted to her by the auditor of the student organizations and in accordance with her own books.
3. The treasurer must sign all requisitions, contracts, and payments after they have been approved by the Board. Loans from the students' loan fund will be made by the president upon recommendations of the Associate Dean of Students and the Business Manager of the University.
4. The treasurer shall be in charge of primary and general elections.

## Article VI

### Meetings

#### Section 1:

Meetings of the association shall be held at the discretion of the president or at the request of twenty-five members of the association.

## Section 2:

Regular weekly meetings of the Executive Board shall be held at a time convenient to the majority of the Board, and additional meetings may be held upon the request of the President.

## Section 3:

Meetings shall be conducted in accordance with Roberts' Rules of Order.

## Section 4:

Meetings shall be considered properly advertised if notices of such meetings appear in the Kaimin and are posted on the bulletin board one day before the meeting.

# Article VII

## Elections

### Section 1: Primary Election.

- a. Primary election shall be held one week before the general election.
- b. All candidates for office must present a petition bearing ten signatures to the secretary of AWS not later than one week preceding the scheduled primary election.
- c. The two candidates for each office receiving the highest number of votes in the primary election shall become candidates for office in the general election.
- d. The primary election shall be eliminated if there are only two petitions filed for each office.

### Section 2: General Election.

- a. The officers shall be elected for a period of one year at a regular general election the first week of March.
- b. A majority vote shall be required for election.

### Section 3:

In the event of a vacancy in the offices of vice-president, secretary, or treasurer, the office shall be filled by a member of the Executive Board elected by a majority vote of the Board.

## Article VIII

### Finances

The finances of the association shall be supplied from an amount appropriated by Central Board according to its budget.

## Article IX

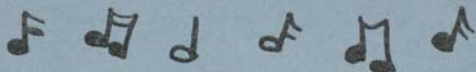
### Amendments

#### Section 1:

The Constitution may be amended by a majority vote of all members. This vote may be taken at a mass meeting of the Association or by polling the living groups.

#### Section 2:

Proposed amendments to the Constitution shall be posted at least five days before a mass meeting or shall be read to each living group one week prior to the voting.



## Traditional MSU Songs

### UP WITH MONTANA

Up with Montana, boys, down with the foe,  
Old Montana's out for a victory;  
She'll shoot her backs around the foeman's line;  
A hot time is coming now, oh brother mine.  
Up with Montana, boys, down with the foe,  
Good old Grizzly'll triumph today;  
And the squeal of the pig will float on the air,  
From the tummy of the Grizzly Bear.



### HAIL, COPPER, SILVER, GOLD

Hail copper, silver, gold borne by our warriors bold  
It's the flag of the Grizzly Bear.  
See those Bruins tearing their way down the field,  
We know they never will yield, Montana,  
On they go and trample down the foe.  
Let's go, Montana, we love the fray,  
The Grizzly fight, fight, fight will bring victory  
Let's go Montana, we'll win today.



### OLD COLLEGE CHUMS

Old College chums, dear college chums,  
The days may come, the days may go;  
But still my heart to mem'ries cling,  
To those college days of long ago;  
Thru youth, thru prime, and when the days  
Of harvest time to us shall come,  
Thru all we'll bear the mem'ries dear,  
Of those college days of long ago.