

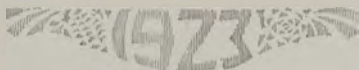




“College Chums”

Old college chums, dear college chums,
The years may come, the years may go;
But still my heart to memories cling,
To those college days of long ago.

Through youth, through prime and when the days
Of harvest time to us shall come;
Through all we'll bear those mem'ries dear,
Those college days of long ago.

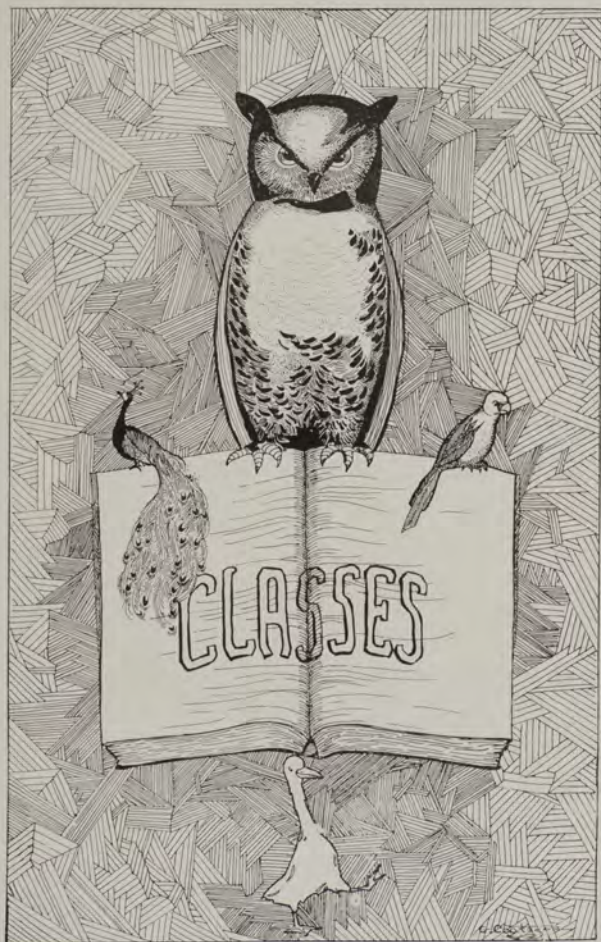


SENTINEL

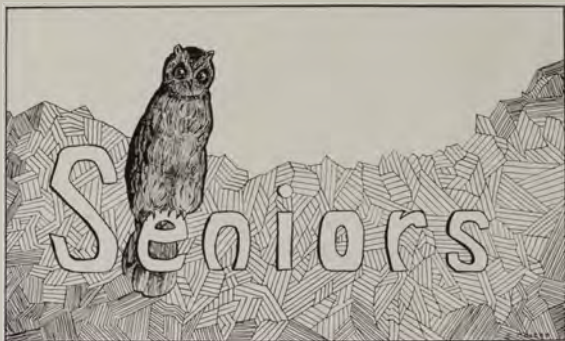


Campus from Mt. Sentinel

1923



SENTINEL



There is an old song that has been sung to every graduating class from every school since Grecian times.

It is a song of gladness and sorrow. Gladness for you because you have successfully completed the preparation and stand ready to utilize your advantage; sorrow, that we must bid you farewell till we meet again.

SENTINEL



Harold Baird

Irma Stark

Margaret Rutherford

Delbert Cawley

HAROLD BAIRD: B. A. in Business Administration; Sigma Chi; Football (2); Frosh Football; Frosh Basketball; Basketball (2-3-4); Captain (4); M Club; Silent Sentinel; Class President (3-4); Intercollegiate Knights.

IRMA STARK: Delta Gamma; Penetralla; Treas. W. S. G. A. 3; Vice-President Class, 4; Treasurer Mortar Board, 4; May Fete, 1-2-3; Orchestra, 1-2-3.

MARGARET RUTHERFORD: B. A. in Journalism; Kappa Kappa Gamma; Penetralla; Theta Sigma Phi; Sec. Senior Class; Pres. Mortar Board; Pres. Art League (1); Press Club; Y. W. C. A. cabinet; Basketball (2-3); Baseball; Kalmin Staff (2); Sentinel Staff (3).

DELBERT CAWLEY: B. A. in Economics; Alpha Delta Alpha; Treas. Senior Class.

CLIFFORD ALBRIGHT: B. A. in Business Administration; Alpha Delta Alpha.

MILDRED WAGY: B. S. in Mathematics.

PERCY SPENCER: B. A. in Business Administration; Sigma Phi Epsilon; President A. S. U. M. (4).



Clifford Albright

Mildred Wagy

Percy Spencer

SENTINEL



James C. Murphy

Ruth Smith

Ruth Thranum

JAMES C. MURPHY: B. A. in Business Administration; Phi Sigma Kappa; Silent Sentinel; "M" Club; Alpha Kappa Psi; Baseball, 2, 3, 4; Class President, 2; Manager of Hi Jinx, 3; Intercollegiate Knight, Chief Grizzly, 2.

RUTH SMITH: Alpha Phi; Delta Phi Delta; Kappa Tau; Areme Club; Treasurer (4); May Fete (1, 2, 3); Y. W. C. A. (1, 2, 3, 4); Town Girls' League (1, 2); Vice-President Town Girls' League (2); Glee Club (1); Choral Club (2); Circle Francais (2); Varsity Vodvil (2); "He Who Gets Slapped" (3); Sentinel Staff (3); Art League (2, 3, 4); Mortar Board (4).

RUTH THRANUM: Ph. G. in Pharmacy; Kappa Epsilon.

MARY X. MCCARTHY: B. A. Business Administration; Kappa Alpha Theta; Penetralla; Gamma Epsilon Pi; Vice-Pres. Class, 1-2-4; Vice-Pres. C. S. A., 2; Pres. C. S. A., 3; May Fete, 1-2; Mgr. Hi Jinx, 1-2; Press Club, 4; Pan-Hellenic Coun., 2-3-4; Sec. A. S. U. M., 3; Sec. Athletic Board, 3; Pres. W. S. G. A., 4; Delegate W. S. G. A. Conference, 4.

HELEN STREIT: B. A. in English; Kappa Alpha Theta; Basketball (1-2-3-4); Cercle Francais; May Fete (1-2); Theta Alpha Phi.

LUCILE HAMMOND: B. A. in Business Administration; Delta Sigma Chi.



Mary X. McCarthy

Helen Streit

Lucile Hammond

SENTINEL



Elvira Starz

Herbert H. Badgley

Clark T. Brown

ELVIRA STARZ: B. A. in Home Economics; Delta Gamma.

HERBERT BADGLEY: B. A. in Education; Student Employment Secretary (4).

CLARK T. BROWN: B. A. Law; Alpha Tau Omega; Phi Delta Phi; Soc. Sci. Club, 2-3; Football, 3; Law Assoc.; Y. M. C. A., 1-2-3-4.

AGNES C. BOYD: B. A. in Journalism; Theta Sigma Phi; Press Club; Social Science, 2-3; Kappa Alpha Theta; May Fete; Frosh Executive Board; Kaimin Staff, 3.

VIVIAN L. BRUNEAU: B. A. in Journalism; Penetralla; Kappa Alpha Theta; Theta Sigma Phi; Kaimin Staff; Basketball, 1-2-3-4; Second Star Team, 1; Baseball, 1-2-3; Press Club; Hi Jinx, 4.

DOROTHY PHELPS: B. S. in Biology; Kappa Alpha Theta; Phi Sigma.



Agnes C. Boyd

Vivian L. Bruneau

Dorothy Phelps

SENTINEL



Emily Maclay

Margaret Johnston

Frank Finch

EMILY MACLAY: B. A. in Business Administration; Kappa Alpha Theta; Gamma Epsilon Pi.

MARGARET JOHNSTON: U. of Southern Cal. (1); B. A. in Sociology; Kappa Alpha Theta; Y. W. C. A. cabinet; Delegate Y. W. C. A. convention (3).

FRANK FINCH: B. A. in Business Administration; Sigma Phi Epsilon.

E. MADSEN: Forestry Club, '19 to '23; Vice-Pres., '22 and '23; Vice-Pres. of I. A. F. C., '23; Intercollegiate Knights.

COLETTE DOHERTY: B. A. History; Kappa Kappa Gamma; C. S. A.; Glee Club, 1-2; Chorol Club, 1-2; May Fete, 1-2; Basketball, 1-2; Baseball, 1-2-3-4.

MARGARET M. KEOUGH: Penetralla; Pres. Math. Club; Pres. Pan-Hellenic Council; Vice-Pres. C. S. A.; May Fete, '20, '21, '22; Baseball; Mortar Board; Hi Jinx; Francals Cercle.



E. Madsen

Colette Doherty

Margaret M. Keough

1923

SENTINEL



E. W. Popham

Gertrude Karcher

Dorothy M. Giese

E. W. POPHAM: A. B., L. L. B., in Law; Sigma Alpha; Phi Delta Phi; Interfrat Council; Trowel Club; D. A. V. of W. W.; Law School Association.

GERTRUDE KARCHER: B. A. in English, certificate for qualification to teach; Alpha Phi; Areme Club (3, 4); May Fete (3); All-Star Baseball (3); Basketball (1, 2, 3, 4).

DOROTHY M. GIESE: B. A. Botany; Omega Xi; Wesley Club; Basketball, 3-4; Baseball, 2-3-4.

MORRIS McCOLLUM: Social Science Club, 2-3; Commercial Club, 1; Interfrat Council, 1-4; Phi Delta Theta; Alpha Kappa Psi.

ABIGAIL GRAVES: B. A. in Home Economics, teacher's certificate; entered U. of M. from Wesleyan, Macon, Georgia, Sophomore year; Town Girls' Club (2); Glee Club (2, 3); Y. W. C. A. (2, 3, 4); Y. W. C. A. cabinet (3); May Fete (3); Y. W. C. A. Vice-President (4); Home Economics Club (2, 3, 4); Alpha Phi.

FRANCIS PETERSON: Ph. G. in Pharmacy; Sigma Nu; Intercollegiate Knights; Kappa Psi; Scabbard and Blade; Pharmacy Club.



Morris McCollum

Abigail Graves

Francis Peterson

SENTINEL



Robert N. Fuller

Kenneth J. Murphy

David Robert Smith

ROBERT N. FULLER: B. A. in Business Administration; Alpha Delta Alpha; Alpha Kappa Psi; Dramatics (2-3-4).

KENNETH J. MURPHY: B. A. in Law; Phi Delta Theta; Tau Kappa Alpha; Intercollegiate Knights; Debate, 1-2-3; Debate Manager, 3; A. S. U. M. Judiciary, 4; Law School Association; Interfrat Council, 4.

DAVID ROBERT SMITH: A.B., L.L.B. in Law, Park College, Missouri, '16-'17; Sigma Chi; Phi Delta Phi; Sigma Epsilon; Trowel Club; Glee Club (1-4).

KENNETH SIMMONS: Yale (1-2-3); Law School; Phi Delta Theta; Baseball (5).

ELEANOR FERGUS: B. A. in Physical Education, certificate for qualification to teach; Alpha Phi; Delta Psi Kappa (3, 4); May Fete (1, 2, 3, 4); Basketball (1, 2); W. S. G. A. Board (3); "The Piper" (3) Student Assistant Department of Physical Education (4); President Women's Rifle Club (4).

EUGENIE S. FROHLICHER: B. A. in French; Areme Club; Episcopal Club; Y. W. C. A.; Joyce Memorial (1); May Fete (1); Forestry Rifle Club (4); Cercle Francais; Board of Editors; Frontier (4).



Kenneth Simmons

Eleanor Fergus

Eugenie E. Frohlicher

SENTINEL



Ovidia Gudmunsen

A. B. Guthrie

Lloyd Madsen

IVIDIA GUDMUNSEN: B. A. Journalism; Delta Sigma Chi; Penetralla; Theta Sigma Phi; Press Club; Secretary and President Y. M. C. A.; Glee Club, '20, '23; Basketball, 1-4; Baseball, 1-2-3; Pan-Hellenic Council, 2-3; W. S. G. A. Board, 3.
Baseball, 1-2-3; Pan-Hellenic Council, 2-3; W. S. G. A. Board, 3; Hi Jinx, 4; French Club; A. S. U. M.; Woman's A. C., 4; May Fete, 1-2-3.

A. B. GUTHRIE: B. A. in Journalism; Phi Sigma Kappa; Sigma Delta Chi; Associate Editor of the Kaimin (4); Kappa Tau; Editor of the Frontier for Sigma Delta Chi; Pres. Press Club, 3.

LLOYD MADSEN: B. A. in Education; Phi Sigma Kappa; Intercollegiate Knight; Scabbard and Blade; Football, 1; Varsity Football, 2, 3, 4.

ARTHUR D. JORDAN: B. A. in Business Administration; Alpha Delta Alpha.

RICHARD UNDERWOOD: B. A. in English; Sigma Alpha; Sigma Upsilon.

RAYMOND NAGLE: L.L.B. in Law; Iota Nu; Phi Delta Phi; Silent Sentinel; Aber Day Judge (4); Interfrat Council (4).



Arthur D. Jordan

Richard Underwood

Raymond Nagle

SENTINEL



Earle Duffy



Irma Wagner



Harvey Elliot

EARLE DUFFY: B. A. in Journalism; Phi Sigma Kappa; Sigma Delta Chi; Track, 2, 3, 4; Press Club President, 4; Associate Editor of the Kaimin, 3, 4; Sentinel Staff, 1922.

IRMA WAGNER: B. A. in Physical Education; Kappa Alpha Theta; Delta Psi Kappa; Secretary A. S. U. M. (4).

HARVEY ELLIOT: B. A. in Business Administration; Phi Sigma Kappa; Silent Sentinel; Intercollegiate Knight; Freshman Football; Varsity Football, 2, 3, 4; Captain of Football, 4; Basketball, 2; M Club; Varsity Volley; Police Chief Aber Day, 3.

LELAND HARPER: B. A. in Business Administration; Sigma Chi; Alpha Kappa Psi.

HARRY ROONEY: Class Treasurer, 1; Treasurer Mathematics Club, 1; Bear Paw, 2; Business Manager Sentinel, 3; Treasurer Social Science Club, 3; Football, 3-4; "M" Club, 3-4; Manager A. S. U. M., 4; Board Directors' Students Store; Phi Delta Theta; Interfrat Council, 3-4.

FRANCES POPE: B. A. in History; Delta Gamma.



Leland Harper



Harry Rooney



Frances Pope

SENTINEL



Gilbert Arthur Porter

Frances Carson

J. T. Shull

GILBERT ARTHUR PORTER: B. A. in Business Administration; Sigma Chi; Track (2-3); Football (2-3-4); Basketball (2-3-4); Baseball (4); Glee Club (1-2-3); Hi Jinx (1-3); M Club President (4); Intercollegiate Knights; Art League.

FRANCES CARSON: B. A. in Spanish; Delta Gamma; Penetralla; Kappa Tau; Chairman of May Fete Committee; Executive Staff of Masquers, 2-3-4; Coed Prom Committee, 3.

J. T. SHULL: B. S. in Forestry; Varsity Vovvil (1); Hi Jinx (2); Glee Club (2-3-4); Forestry Club (1-2-3-4); Interfrat Council (4).

CELIA M. ANDERSON: B. A. in Journalism; Theta Sigma Phi; Kappa Tau; Kaimin Staff; Press Club; Masquers; Penetralla; Sentinel Staff, 3; May Fete, 1, 2.

ARTHUR L. DRISCOLL: B. S. in Pharmacy; Phi Sigma Kappa; Kappa Psi; Pharmacy Club; Glee Club, 2; Varsity Quartette, 3; Intercollegiate Knight, 2.

ROLLAND AHERN: Law School; Sigma Chi; Basketball (2-3-4); Captian (4).



Celia M. Anderson

Arthur L. Driscoll

Rolland Ahern

SENTINEL



Olaf Joseph Bue

Lois B. James

Doris Gally

OLAF JOSEPH BUE: B. A. in Journalism; Sigma Phi Epsilon; Sigma Delta Chi; Masquer.

LOIS H. JAMES: LL. B., B. A. in Law; Alpha Phi; attended University of Wisconsin (2); May Fete (1, 2); Secretary-Treasurer Law Association (4, 6); Secretary A. S. U. M. Store Board (5, 6).

DORIS GALLY: B. A. in Physical Education; Delta Sigma Chi; Penetralla; Delta Psi Kappa; Theta Alpha Phi; Women's Cheer Leader, 2; Secretary W. S. G. A., 4; Basketball, 1-2-3-4; Baseball, 1-2-3-4; May Fete, 1-2-3; Y. W. C. A. Cabinet, 4; Music Club; Episcopal Club; La Cercle Francaise; Hi Jinx, 2-4; Women's Athletic Association.

SIDNEY KENT: B. A. in Economics; Sigma Chi.

OAKLEY E. COFFEE: B. A. in Business Administration; Phi G. in Pharmacy; Sigma Chi; Silent Sentinel; Kappa Psi; Scabbard and Blade; Trowel Club; Intercollegiate Knights; Pharmacy Club; Debate, 1, 3; Glee Club, 1, 2, 3; Manager Baseball, 2; Manager A. S. U. M., 3.

THEODORE L. RAMSEY: B. A. in Journalism; Phi Delta Theta; Sigma Delta Chi; Silent Sentinel; Intercollegiate Knights; Press Club Vice-President 4; Masquer, 2-3-4; Kalmis Staff, 2-3; "M" Club, 2-3-4; Football, 2-3-4; Freshman Football; Glee Club, 4; Choral Club, 4.



Sidney Kent

Oakley E. Coffee

Theodore L. Ramsey

SILENT SENTINEL



Francis Gallagher

William Cogswell

Angelino Barnhart

FRANCIS GALLAGHER: Ph. G. in Pharmacy; Sigma Nu; Pharmacy Club; Kappa Psi.

WILLIAM COGSWELL: B. A. in Journalism; Alpha Delta Alpha; Silent Sentinel; Sigma Delta Chi; Hi Jinx (1); Art League (1); University Orchestra (2); University Band (medal- lion; 1, 2, 3, 4); Bear Paw; Press Club (1, 2, 3, 4); Editor Sentinel (3); Editor Kaimin (4); Editor M Book (4); Business Manager, University Plays, summer 1922.

ANGELINO BARNHART: B. A. in English; May Fete (1-2-3); Y. W. C. A. Cabinet (3-4); Episcopal Club.

ELLSWORTH MOSBY: Law School; Phi Sigma Kappa.

RUTH WINANS: B. A. Business Administration; Delta Gamma; Masquers Club; Theta Alpha Phi; May Fete (3); Hi Jinx (2-4); Pan-Hellenic (3).

VIOLA A. LEARY: B. A. Mathematics; Delta Sigma Chi; Mathematics Club; C. S. A.; Basketball; May Fete (2-3).



Ellsworth Mosby

Ruth Winans

Viola A. Leary

SENTINEL



Thomas M. Pearce

Vera Elizabeth Ahlgren

Arthur Serumgaard

THOMAS M. PEARCE: B. A. in English; Sigma Chi.

VERA ELIZABETH AHLGREN: B. A. in History; May Fete (1); Y. W. C. A.; Hi Jinx (4); Masquers; Mortar Board; Wesley Club.

ARTHUR SERUMGAARD: Law School; Beta Theta Pi; Interfrat Council (4).

ALICE HANKINSON: B. A. in Journalism; U. of Idaho (1-2); Press Club (3-4); Secretary Press Club (4); Chairman Press Club Banquet (3); Masquers Club (4); Kaimin Staff (3-4); Y. W. C. A. (3-4); Theta Sigma Phi; Hi Jinx (4); Alpha Chi Omega.

GEORGE WIEDEMAN: B. A. in Business Administration; Alpha Kappa Psi; Baseball (3-4).

JOSEPH SWEENEY: L. L. B. in Law; Sigma Chi.



Alice Hankinson

George Wiedeman

Joseph Sweeney

1923

SENTINEL



Carl E. Dragstedt

Dorothy A. Peterson

Catherine D. Hauck

CARL E. DRAGSTEDT: B. A. in Business Administration; Phi Delta Theta; Alpha Kappa Psi; Trowel Club (3-4); Band '20, '21, '22; Masquers, '20, '21, '22, '23; Commercial Club, '20; Science, '21.

DOROTHY A. PETERSON: Le Cercle Francais (2-3-4); Glee Club (3); U. of So. California (2); Gamma Epsilon Pi; Kappa Kappa Gamma.

CATHERINE D. HAUCK: B. A. in Mathematics; Delta Sigma Chi; Y. W. C. A. Cabinet, '22, '23; Delegate Seabeck Conference, '22; Vice-Pres. Mortar Board; Sec. Arene Club, '23; Treas. Mathematics Club, '21; Vice-Pres. Mathematcis Club, '22; Art League, '21, '22; Episcopal Club; Basketball, '20, '21; Baseball; French Club; May Fete, '20, '21, '22.

SOLVAY ANDRESEN: Alpha Phi; Y. W. C. A. Cabinet (2); Glee Club; Individual Girls' Track Champion (2); All-Star Basketball (2, 3); All-Star Baseball (2, 3, 4); Athletic Representative W. S. G. A. (4); Vice-Pres. W. S. G. A. (4); Vice-Pres. A. S. U. M. (4); Theta Sigma Phi.

THOMAS COLTON: Law School; Alpha Tau Omega.

FELIPE VANDERRAMMA: B. S. in Forestry; Forestry Club.



Solvay Andresen

Thomas Colton

Felipe Vanderramma

SENTINEL



Martha Morrison

Roy Tillman

Catherine Small

MARTHA MORRISON: B. A. in Journalism; Theta Sigma Phi.

ROY TILLMAN: B. A. in Journalism; Sigma Nu; Treasurer Sigma Delta Chi (4); Press Club (1, 2, 3, 4); Social Science Club (3); Art League (1, 2, 3, 4); C. S. A. (1, 2, 3, 4); Business Manager The Frontier (3); Kalmin Staff (2, 4); Sentinel Staff (3).

CATHERINE SMALL: B. A. in Journalism; Phi Beta; Theta Sigma Phi; Penetralla.

L. WYNEMA WOOLVERTON: Delta Gamma; Penetralla; Theta Sigma Phi President, '23; Class Secretary, '22; Pan-Hellenic, '21, '22, '23; Secretary and Treasurer, '22; Associate Editor of Sentinel, '22; Symphony Orchestra, '20, '21; May Fete, '20, '21, '22; Hi Jinx, '23; Press Club, '20, '21, '22, '23; Kappa Tau.

RAYMOND GARVER: B. A. in Mathematics; Alpha Tau Omega.

MURIEL PERKINS: B. A. in Home Economics; Kappa Alpha Theta.



L. Wynema Woolverton

Raymond Garver

Muriel Perkins

SENTINEL



Catherine Bailey

Gertrude Hubber

Nelma F. McClay

CATHERINE BAILEY: B. A. in Business Administration.

GERTRUDE HUBBER: B. A. in Business Administration; Phi Beta.

NELMA F. McCLAY: B. A. in Chemistry; Student Asst. Chemistry Dept., 1-2-3-4; Pres. Alchemist Club.

MARK FAWCETT: B. A. Mathematics; Kappa Tau; Math Club (2, 3, 4); Board of Editors, Frontier (4).

RUTH P. FOWLER: B. A. in Mathematics; Mathematics Club; Alchemist Club; Arene Club; Secretary Alchemist Club (4).

CLARENCE B. MOORE: B. A. in Education; Phi Sigma.



Mark Fawcett

Ruth B. Fowler

Clarence B. Moore

SENTINEL



Jennie Marie Carlisle

Clayton Farrington

Genevieve Petzoldt

JENNIE MARIE CARLISLE: B. A. in Modern Languages.

CLAYTON FARRINGTON: B. A. in Sociology; Band (1-2-3-4); President Band (4).

GENEVIEVE PETZOLDT: B. A. in History; Silver Bow History Prize (3); Penetralla; Kappa Tau; May Fete (1-3); Secretary Mortar Board (4); Treas. W. S. G. A. (4).

THELMA WUEST: B. A. Home Economics; Delta Sigma Chi; Penetralla; Vice-Pres. Home Economics Club (4); Y. W. C. A. Cabinet (2-3).

JOHN MacFARLANE: Law School; Phi Delta Phi.

FRANCES LEORA BRADSHAW: B. A. in Business Administration; Y. W. C. A.; Gamma Epsilon Pi.



Thelma Wuest

John MacFarlane

Frances Leora Bradshaw

SENTINEL



Reba Malin



Jalmar Skei



Llowella Baptist

REBA MALIN: B. S. Chemistry.

JALMAR SKEI: Ph.G. Pharmacy.

LLOWELLA BAPTIST: B. A. Fine Arts.

ESTHER NELSON: B. A. Mathematics.

EDWIN BAILEY: B. A. Business Administration.

MARGUERITE A. THIBAUX: B. A. in Chemistry; Student Asst. Chem. Dept.,
(1, 2, 4); Alchemist Club.



Esther Nelson



Edwin Bailey



Margaret Thibaudeaux

SENTINEL



Ruth Charles

Roberta O'Hara

Eunice T. Moffett

RUTH CHARLES: B. A. History; Omega Xi; Pan-Hellenic (4); May Fete (1-2-3); Varsity Vexill (3); Episcopal Club (3); Arene Club (3); Spanish Club (2); Frontier Staff (4).

ROBERTA O'HARA: B. A. in History; Kappa Kappa Gamma.

EUNICE T. MOFFETT: B. A. in Spanish; Phi Sigma; Wesley Club; Cercle Francals; Baseball (1); Y. W. C. A. (2-3-4).

AGNES BROWN: B. A. in History; Phi Sigma (2, 3, 4); Treasurer (4); Baseball (1, 2); Basketball (2-3).

LILLIAN SPEER: B. A. in History.

HAZEL VAUGHN: Ph.G. in Pharmacy; Kappa Epsilon.



Agnes Brown

Lillian Speer

Hazel Vaughn

SENTINEL



Florence Sanden

Mary Getty

Ralph E. Crowell

FLORENCE SANDEN: B. A. in Journalism; Kappa Kappa Gamma; Theta Sigma Phi; Penetralla; Pan-Hellenic (3-4).

MARY GETTY: B. A. in Home Economics.

RALPH E. CROWELL: B. S. Forestry; Forestry Club (1, 2, 3, 4).

CLYDE F. MURPHY: Manager A. S. U. M. (2); Glee Club (1-2); Varsity Quartette (1-2); Glee Club Manager (3); Bear Faw; Pres. A. S. U. M. (3); Senior Rep. to A. S. U. M. (4); Law School Association (2-3-4); Debate (4); Interfrat Council (2); Sigma Chi; Phi Delta Phi.

RALPH BELL: B. A. in Journalism; Sigma Nu.



Clyde F. Murphy

Ralph Bell

1923

SENTINEL



Neill

Roethke

Badger

Rogers

1923

SENTINEL



Reynolds



Crandall



Matthews



McAlear



Tanner



Moody



Lore



Gleeson



Fields

SENTINEL



Deeney

Oliver

Closs



Dapcza

Keim

Witeomb



Benson

Jones

Baptist

SENTINEL



Moriarity

Quinn

Snyder



Teats

Jacobs

Fryer



Morris

McKown

Ramsey

SENTINEL



McAuliffe

Shaffer

Thornton



Watson

McQuarrie

Lebkicker



O'Neill

Murphy

Carney

SENTINEL



Harvey



Seipp



Anderson



Bishop



Kibble



Badgley



DeKray



Keith



Reed

SENTINEL



Bullock

Rottler

Newman



MacKinnon

Kirkwood

Painter



Wallace

Kiely

Blaisdel

SENTINEL



Wilkinson



Mascotte



Rowe



McRae



Falck



Balley



Pease



Egan



Staggs

SENTINEL



Newman



McGregor



Gillespie



McDonnell



Knuth



Broderick



Deeney



Fraser



O'Neil

SENTINEL



Jahreiss



Moore



Woodward



Christie



McGuire



Aho



Niles



Taylor



Onstad

SENTINEL



Trotter

P. Angland

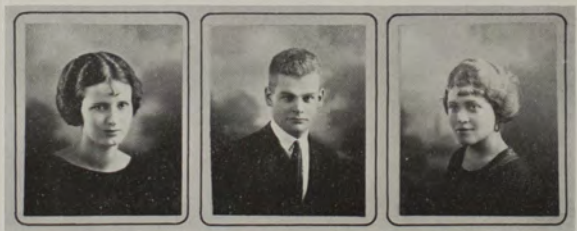
Hershey



Beckwith

Riley

Wilson



Egleston

Tintinger

Dover

SENTINEL



Thomas

Beall

Law



M. Angland

McFarlane

F. Murphy



Silvernale

SENTINEL



"Health is the first of all liberties."—Amiel.

1923

SENTINEL



H. Doggett

M. Fitzpatrick

R. Bryson

F. Chichester

1923

SENTINEL



1973

SENTINEL



E. Buck

G. McCarthy

M. McRae

M. Porter

1923

ABOUT THE CAMPUS



Mysterious forces are at work on old Mt. Sentinel

WE ARE GETTING BETTER
AND BETTER EVERY DAY



Gateway for the
Rabbit
Dist.

Why not the
Mysterious Love
Treatment for
our Frack?



An education takes a lot more
headwork these days.



Daily Intermural meeting
of Fraternity tooks.