

# 1956-57 . . . the year . . .

**fall** . . . began with football blasts of screaming . . . tense-ness . . . rebellion . . . Suez crisis contributed to general anxiety with threat of return to khaki for many . . . energy erupted with Halloween pantie raid and effigy . . . snow, Christmas and final exams, with the new higher academic standards, calmed and objectified.

**winter** . . . a bit of apathy . . . many took to the ski slopes . . . watched basketball team come in third in conference . . . controversies over judicial board and the pep of music at games . . . attendance mushroomed at Friday Club and Great Philosopher lectures with leading campus figures speaking or leading discussion . . . trend of campus split between the intellectual and the rah rah began to appear.

**spring** . . . and out came the sun and the tans . . . the swim suits and bermudas . . . and, of course, the picnics . . . asmsu prexy campaigning never so fierce despite overt lack of issues . . . leadership camp and kaimin pages displayed objective concern with the needs and values of academia.



Shirley Swenson, Homecoming Queen representing Turner Hall, is shown immediately following her crowning by A. B. Guthrie, member of the State Board of Education . . . Sue Williams, Delta Gamma, on the left, and Joan Griffin, Alpha Phi, right, are her attendants . . . in

background are other candidates . . . Courtney Crowder, Kappa Kappa Gamma; Beverly Clardy, Syna Delphic; Donna Whitehead, Sigma Kappa; Diane Davis, Tri Delt; Myrna Kronmiller; Brantly Hall; Lee Ryan, Corbin Hall, and Ardice Sayre, Kappa Alpha Theta.



portrait of Shirley

## msu goes



convertibles carrying queens and candidates this year replaced traditional float thrones.



Montana Silver, Montana Copper and Montana Gold headed the Homecoming parade . . . riding the horses are Bill Williamson, Sharon Orr and Mrs. Lynn Wolfe.



an extraneous "float" of the parade . . . sponsor unknown . . . appears to be a protest?

## modern for homecoming

"shock 'em Grizzlies" was the theme of the winning float done by Kappa Alpha Theta and Phi Delta Theta . . . Ivy League Grizzly manipulated controls from behind Mt. Sentinel . . . robot Montana team downing scarecrow Utah Aggies.





Sharon Orr takes a jump.

## horseshow climaxes homecoming events



Pat McFarland, the President's wife, awards a trophy.

sponsored by MSU Saddle Club under direction of Mrs. Lynn Wolfe . . . more than forty students participated in fifteen classes for riders under twenty-two . . . ability of rider to handle mount judged.





bear paws being traditionally tapped at early fall singing on the steps.

s o s tonight . . . s o s tonight  
m s u tradition . . . m s u tradition  
see you there . . . see you there

Spurs lend more tradition to the half hour of singing which ends at the chiming of eight with a slow departure to the humming of "College Chums".





condition of pavement reveals overt reason for closing as trucks dump the gravel in background . . . .



Joan Hoff gets a red ticket on her yellow jeepster for ignoring the new parking signs . . . .



this sign mysteriously appeared early one morning in protest to homecoming visitors

## maurice closing stirs campus tension, actions

sudden closing of maurice avenue shocked some students into angry and thoughtless retaliation . . . gravel barricades barred use of the "cratered" avenue which neither the city nor msu wished to repair . . . Mrs. Edna Bulen protested action in court sessions which dragged through spring quarter . . . plans to use maurice as a future truck route later were revealed as a spur to the closing . . .



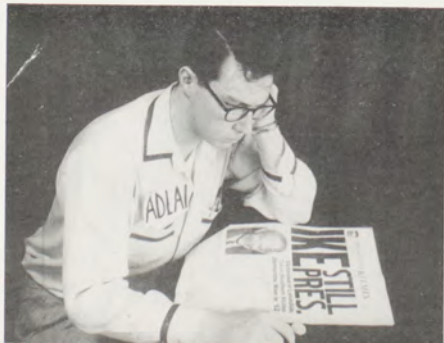
democratic candidate for governor, Arnold Olsen, shakes hands with students following campus appearance and talk on the "oil issue".



## campus follows national trend

msu went republican in the mock election with all but eleven of the thousand ballots filled . . . accurately predicted most of the winners.

Larry Pettit, why so g'lum?



Bob Higham likes that headline.





# football brings crazy backing

floppy hats . . . . father's raccoon coat . . . . hula skirts . . . . cow bells . . . . lots of pep . . . . lots of noise . . . . to little avail.



a touchdown? or "hold that line"?



careful there . . . .



rah rah rah rah rah, rah rah rah rah rah, rah rah rah rah rah.

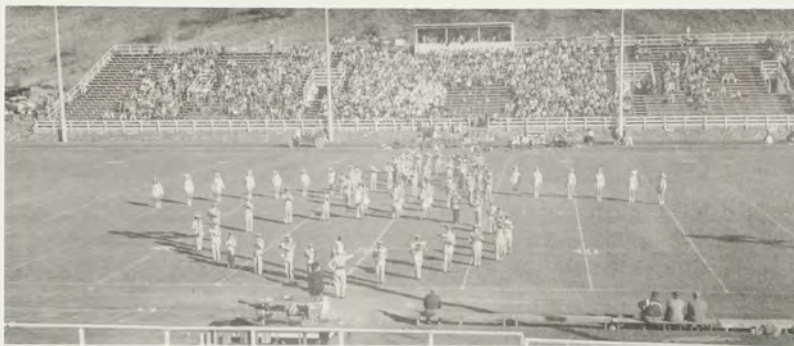


... Bozeman Bobcat gets hung ... so did MSU and the MSC fans carried off those goalposts in their exhilaration.

and so it's up with



"THE GIRLS"



msu marching band entertains with music . . . formations . . . twirlers between halves.

## montana boys . . .



"jerry" . . . our  
grizzly cub mascot.

# Hard Luck Plagues MSU Grid Season

Lady Luck certainly wasn't on Montana's side this season. Injuries plagued the team wherever the Grizzlies went.

Both Severn Hayes and Ervin Rosera, the two leading ground gainers, suffered broken legs during the latter part of the year. Hayes had also broken his leg during the previous season. Bill Kaiserman was forced to hang up his spikes with an injured back. Matt Gorsich's severe leg injury caused him to miss the Idaho game.

Don Williamson bruised his knee at Salt Lake City and Bill Hand missed both the New Mexico and Idaho games. Dick Drivi, Montana Bockman, Bob McGihon and Ivory Jones, plus several others, suffered various injuries. An appendectomy kept Dick Wright, speedy sophomore back, from playing football this year.

## Lettermen

Roy Bray  
Chuck McKelvie  
Paul Enochson  
Jerry Connors  
Ervin Rosera  
Severn Hayes  
Bob Everson  
Matt Gorsich  
Pat Monno  
Don Williamson  
Bill Kaiserman  
Mike O'Brien  
Charley Moore  
Dick Drivi  
Vern Tennant  
John Dixon  
Duane Carver  
Bob Small  
Stan Renning  
Karl Benjamin  
Ivory Jones  
Bill Hand  
Bob McGihon  
Bob Butorovich  
Pete Rheimhart  
Will Hart  
Terry Hurley  
Lou Pangle  
Gary Kennedy  
Manager, Ken Gue

Montana's Grizzlies claim to fame this season was in its ranking sixth in the nation in punt returns—24 for 342 yards and an average of 14.3 yards per carry. The Silvertips won only one while losing nine games.

In the first game of the season, Arizona downed Montana 27-12. Although holding down Art Luppinio, the champion ground gainer in college history, with a stout ground defense, the Silvertips were victims of a sizzling air attack. Two weeks later Utah's two platoons outlasted the Grizzlies for a 26-6 win for the strong Utes.

**Sports Illustrated** said this about the third straight game on the road: "Denver won its first of the season, handing Montana its third straight loss 22-13. All the scoring in this one was in the first half, the officials taking over in the second half. In fact, the striped shirts had a field day as they marched off too much yardage in their enthusiasm, another time getting the downs mixed up, and finally permitting an ineligible receiver to catch a pass."

Before 7500 Homecoming fans, in Montana's first home game, Utah State broke a 13-13 tie at the start of the fourth quarter to go on to hand a 27-13 loss to the hapless Grizzlies. Four first-stringers, Kaiserman, Jones, McGihon, and Williamson, weren't in the Montana line-up due to injuries.

The Grizzlies ground out 19 first downs in a 32-14 victory over the Brigham Young Cougars. Guard Renning, elected outstanding lineman of the game, performed a rare feat; he scored on a 40-yard run after intercepting a BYU pass.

In the 20-34 loss to Colorado A & M, Montana's only bright spot was Hayes' 70-yard sprint into paydirt on a kickoff return. The Montana State Bobcats won their eleventh victory of the 36 frays between the two schools by a score of 14-33. The Bobcats went on to finish their undefeated season by playing in the Aluminum Bowl at Little Rock, Arkansas.

The Wyoming Cowboys, who also had an undefeated season, ran wild in the second half to humble the Silvertips 34-13; the score at halftime was deadlocked at 13-all.

Despite Montana's Rosera, who gained first downs at random, New Mexico's Lobos eked out a 14-13 win from the Grizzlies in a game which saw a near-riot in the closing seconds. Tempers flared over a swinging incident between two players. Both benches emptied onto the field as spectators joined in; policemen spent five minutes clearing the field.

On Thanksgiving Day, the Idaho Vandals retained the little brown jug by taking advantage of a blocked kick and a 41-yard T.D. march to shut out the scrappy Montana eleven 14-0.



Jack Hill, the nation's leading ground gainer, is shown above as he was stopped by the Grizzlies in the Homecoming game on October 13 at Missoula. Vern Tennant is at the bottom of the pile. Utah State won the game with MSU by a score of 27-13.

## Season Record

DATE	OPPONENT	WHERE PLAYED	SCORE
		Mont. Oppon.	
Sept. 15	U. of Arizona	Phoenix, Ariz.	12 27
Sept. 29	U. of Utah*	Salt Lake City	6 26
Oct. 5	Denver U.*	Denver, Colo.	13 22
Oct. 13	Utah State College*	Missoula	13 27
Oct. 20	Brigham Young U.*	Missoula	21 14
Oct. 27	Colorado A&M*	Fort Collins, Colo.	20 34
Nov. 3	Montana State	Missoula	14 33
Nov. 10	U. of Wyoming*	Billings, Mont.	13 34
Nov. 17	U. of New Mexico*	Albuquerque	13 14
Nov. 22	U. of Idaho	Missoula	0 14

\*Conference foes

125 245

## Renning Shines

Stan Renning, 200-pound guard from Great Falls, lived up to all expectations with his bone-crushing offensive and defensive play. Several honors were heaped upon the young blond. Renning was a near-unanimous choice by the Associated Press as the most promising sophomore in the Skyline Conference, and he placed on the Skyline All-Star second team. He is the first sophomore ever to be chosen as the outstanding Grizzly player.



# oxford and montana

## debate nato

Alec Grant, Bruce Cook (a future oxford man), Roy Dickson and Don Mosher in a jocular mood after intense debate . . . "resolved: that north american treaty alliance has outlived its usefulness" . . . outcome was unknown . . . Dickson is Rhodes scholar from Jamaica, B.W.I. . . . Grant intends to become a barrister.





the messenger repeats Autrobus' telegram concerning the discovery of wheel and alphabet.



the actress playing Sabina quarrels with stage manager over lines which she has refused to say . . .

## five curtain calls for "the skin of our teeth"

masquers' fall production . . . Thornton Wilder's comedy . . . spans five thousand years . . . the Antrobus family and their maid survive fire, flood, pestilence, the seven-year locusts, the ice age, the black pox and the double feature, a dozen wars and depressions by the skin of their teeth . . . difficult staging effects . . .

### cast

Announcer . . . Daniel Hoffman  
 Sabina . . . Dolores Vaage  
 Mr. Fitzpatrick . . . Stanley Fritzing  
 Mrs. Antrobus . . . Sheila Sullivan  
 Dinosaur . . . Bill Nelson  
 Mammoth . . . Bruce Ostby  
 Telegraph Boy . . . Robert Russ  
 Gladys . . . Sharon Stanchfield  
 Henry . . . John N. Kobzeff  
 Mr. Antrobus . . . Robbin R. Hough  
 Doctor . . . Corbin P. Elliott  
 Professor . . . Richard Howell  
 Judge . . . Kenneth L. Pedersen  
 Homer . . . Paul Halleck  
 Miss E. Muse . . . Marilyn Dickson  
 Miss T. Muse . . . Helen Guthrie  
 Miss M. Muse . . . Arlene Jennings  
 Drum Majorettes . . . Linda Johnson  
                                  Carol Ann Herman  
                                  Lois De Tonancour  
 Fortune Teller . . . Sally Bohac

Usher . . . Jeff Watson  
 Usher . . . Jack Howell  
 Convention Delegates . . . Don Calfee  
                                  Barbara Thompson, Darrell Ehler,  
                                  Robert D. Sandwick,  
                                  Michael Belangie,  
                                  Edward E. Brodinski, Gary Gatza  
                                  Robert Russ, Millie Enebo,  
                                  Karen Larson, Kathleen Harris,  
                                  Jack Howell, Jeff Watson  
                                  Bill Nelson, Eruec Ostby,  
                                  Lauretta Ledbetter  
 Dancers . . . Paula Heidelman,  
                                  Carol Peterson  
 Broadcast Official . . . Richard Howell  
 Ass't. Broadcast Official . . . Don Calfee  
 Defeated Candidate . . . Darrell Ehler  
 Mr. Tremayne . . . Bill Kearns  
 Hester . . . Temple Brown  
 Ivy . . . Heather McLeod  
 Fred Easley . . . Robert D. Sandwick

Bo Brown, director, in the ticket booth opening night. of course we always carry our head around with us backstage . . .



Clem Peck, designer and technical director, adjusting the lighting . . . and always . . . the greasepaint . . .





a sellout concert crowd came to hear the "King of Swing" and his full band and three soloists perform on November 26 . . . first really "big name" band to appear at MSU since 1954 . . .

## benny goodman swing draws fifteen hundred

closeups of Goodman and his performers before the listeners and dancers which packed the Cascade room of the Lodge and overflowed in the Yellowstone room . . .





the children of the ballet theatre romp onstage in the "hi, ho, anybody at home" production as the jubileers watch . . .

## "christmas moods" presented by choir, jubileers, ballet theater and chamber band

the a cappella choir which was again heard nationally in their annual cbs christmas broadcast . . .







Adrienne Mills and Riley Hunton in a close-up from the Currier and Ives sequence . . .



three wise men . . . backstage . . .



annual christmas caroling by all women's living groups . . . thetas singing "Silent Night" to the sigma nu's above . . . warm surprise of hot chocolate at the theta chi house . . .

## christmas carolers

## serenade men



caught in that last-minute cramming . . . . Charlie Bull maintains three in the morn as the best hour . . . .

## final exams hit hard



Tom Lawin demonstrates how not to get those "A's" . . . .



starting with an "M" formation at the top of the mountain, the experts of the ski clan pattern their way with flares all the way to the lodge . . . . impressive above the wide wide valley . . . .

## skiers tumble at big mountain





queue up for the t bar . . . and they're on their way . . .



happens to the best of us . . .

branchless forest outside the lodge . . .

nobody ever gets hungry skiing . . .





study suffers for a week as the sigma nu's shake hands with prospects . . .

## delayed rush brings pledges and protests

finis . . . and smiles are wide for many . . .





## cold cancels snow sculptures

Tim Grattan, sigma chi, and Greta Peterson, delta gamma, were crowned snow king and queen at aw's winter weekend dance . . . zero and below temperatures caused the living group snow sculptures competition to be canceled . . .



a bird's eye view of the field house in action . . .

## basketball enthusiasm fills field house

cheerleaders on the whirl . . .



a "cute" result of the Kaimin-inspired controversy over the "pep"  
of the chamber band which played at basketball games . . .





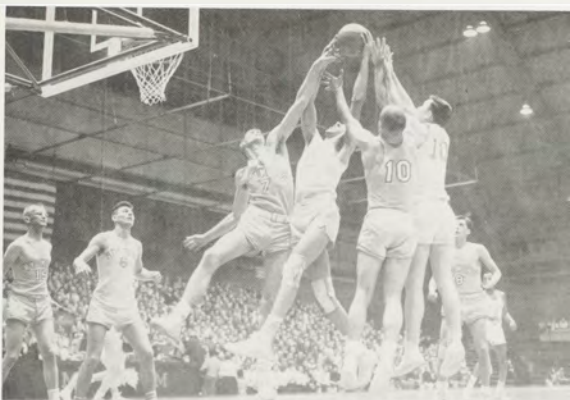


Bob Martin (33) of New Mexico seems to be using Hal Erickson as a stepping stone to greater heights. Russ Sheriff (5) and Myrl Goodwin (45) await the rebound. Martin's antics weren't too effective, as Montana won the game, 68-50.

Russ Sheriff (5) hooks over the outstretched hand of Harold Theus for two points as the Grizzlies down Utah State 78-67.



In the picture below, Ray Howard goes high in the air to grab a rebound from the anxiously awaiting arms of Jim Powell (10), and Dave Bradley (7) and Terry Eckhardt (10) of Wyoming. Al Dunham (6) and Don Carlson (15) stand under the basket. Montana won, 64-60.



In the above picture, Clancy Waters (16) drives in to shoot under the long arm of Ted Smith (14) of Utah State. Montana won, 78-67. Zip Rhoades (7), Al Dunham (6), Russ Sheriff (5), and Harold Theus (16) move in for the rebound.

# Hoopsters Third in Skyline Conference

Montana's hustling hoop squad, a "dark bear" in the 1957 Skyline race, finally finished in third place in the conference standings after reming in the thick of the battle for the "top dog" position until the final game of the season.

The Grizzlies' 9-5 Skyline record was the finest showing by a Montana team since MSU joined the mountain loop in 1951. Against non-conference foes, MSU broke even in eight games to round off the total season's record at 13-9.

The Silvertips proved they were definitely a home court team by winning eleven in a row at home after losing to Idaho in the first fray of the season in the Field House. They won two while losing eight away from home, which was an improvement over last year when the squad didn't win any games on the road.

Their two road wins came at the expense of Wyoming and New Mexico. The 36-33 victory at New Mexico on Feb. 16 was MSU's first league win away from home since Feb. 28, 1952. The 81-78 win over the Cowboys was only the second time Montana has won an athletic event in Skyline play at Wyoming.



CLANCY WATERS exhibits his pet jump shot.

## Individual Statistics

Player	FGM	FG%	FTM	FT%	REB	TP	Ave.
Rhoades	100	.308	116	.748	149	316	144.
Waters	101	.356	65	.793	58	267	12.7
Dunham	59	.353	94	.863	177	212	10.1
Sheriff	67	.393	50	.595	200	184	9.2
Powell	48	.343	44	.746	93	140	6.4
Erickson	48	.304	27	.730	71	123	6.8
Howard	42	.404	30	.588	123	114	5.4
Cox, Jr.	10	.400	3	.500	15	23	1.2

## Season Summary

OPPONENT	SCORE		WHERE PLAYED
	Mont.	Opp.	
U. of Idaho	56	72	Missoula
Washington State	58	81	Pullman, Wash.
U. of Idaho	52	57	Moscow, Idaho
Washington State	65	48	Missoula
Washington State	66	61	Missoula
North Dakota State	71	47	Missoula
Brigham Young U.*	68	85	Provo, Utah
Utah State*	79	80	Logan, Utah
New Mexico*	68	50	Missoula
Denver U.*	52	49	Missoula
Utah U.*	60	48	Missoula
Montana State	60	46	Missoula
U. of Wyoming*	64	60	Missoula
Colorado A&M*	74	63	Missoula
Utah U.*	70	84	Salt Lake City, Utah
Denver U.*	53	55	Denver, Colo.
New Mexico*	36	33	Albuquerque, N. Mex.
Utah State*	78	67	Missoula
Brigham Young U.*	71	63	Missoula
Montana State	71	88	Bozeman, Mont.
U. of Wyoming*	81	78	Laramie, Wyo.
Colorado A&M*	59	66	Ft. Collins, Colo.
Totals	1413	1381	
Averages	64.2	62.8	

## Final Standings

Brigham Young U.	11-3	.786
Utah U.	10-4	.714
Montana U.	9-5	.643
Denver U.	8-6	.571
Utah State	7-7	.500
Colorado A&M	6-8	.429
Wyoming U.	4-10	.286
New Mexico U.	1-13	.071



JUMP BALL. Ray Howard (11) and Gary McEwen (18) of Idaho leap to tip the ball in Montana's opening game. Waiting for the tip are Waylen Coleman (26), Jim Powell (10), Jim Prestel (30), and Rudy Rhoades (7). Idaho won, 72-56.

## Lettermen

Ray Howard	Sr.
Rudy Rhoades	Sr.
Alan Dunham	Sr.
Russ Sheriff	Jr.
Harold Erickson	Jr.
Clancy Waters	Jr.
Forrest Cox, Jr.	Jr.
Jim Powell	Soph.

## Facts . . .

Montana led the Skyline conference in defense by holding their foes to 62.9 points per game in 14 league contests . . . MSU was one of the top 20 teams in the nation in defense.

Al Dunham tied the school record for scoring the most points via free throws in one game by swishing 14 as MSU beat Colorado A&M 74-63 . . . Dunham also set what may be a new Skyline record by scoring 33 consecutive free throws.

The Grizzlies set a new school record by scoring 72.1 per cent of their free throws.

Ray Howard grabbed 21 rebounds against Idaho . . . Clancy Waters scored 22 of the team's 36 points in outlasting New Mexico's stalling tactics, 36-33.

In the February 23 fray with B.Y.U., Zip Rhoades (7) flicks a left-handed jump shot over the outstretched hands of Lynn Rowe of B.Y.U. Also pictured are Jim Powell (10), Tom Steinke (23), Russ Sheriff (6), and Roy Thacker (35).



## Montana 60 - Utah 48

Big Russ Sheriff bucketed 15 points and grabbed 14 rebounds to inspire the hustling Grizzlies to scalp the Utah Redskins, defending Skyline champions, by a 60-48 score. After a fairly close first half, the Grizzlies, playing deliberately and exhibiting a zone defense, pulled away midway in the last half.

In the below picture of the January 19 game, Al Dunham (6) springs high into the stratosphere to swish two points despite the defensive work of Jerry McCleary (35). Shown are Waters (16), Click Shores (10), and Sheriff (5).

### MONTANA (60)

	fg	ft	pf
Rhoades	1	5	3
Dunham	3	4	3
Sheriff	6	3	3
Waters	6	1	0
Erickson	3	2	2
Powell	2	1	0
Howard	0	0	1
Cox	0	0	0

22 16 14

### UTAH (48)

	fg	ft	pf
Kane	5	2	3
McCleary	1	2	2
Poliard	1	3	1
Jensen	2	0	2
Hale	6	0	0
Shores	1	0	1
Pastrell	1	0	2
Benson	0	0	1
Paul	1	0	1
Berner	0	3	1

	fg	ft	pf
Kane	5	2	3
McCleary	1	2	2
Poliard	1	3	1
Jensen	2	0	2
Hale	6	0	0
Shores	1	0	1
Pastrell	1	0	2
Benson	0	0	1
Paul	1	0	1
Berner	0	3	1

18 12 14



## Montana 71 - B.Y.U. 63

In one of the most thrilling comebacks ever witnessed in Missoula, MSU scored 15 points while holding Brigham Young scoreless in the last five minutes and 46 seconds to defeat the Cougars 71-63. At the time, BYU had one of the top-ranked hoop squads in the nation.

Jim Powell, in his first starting game, scored 15 points and cleared 18 rebounds. Dunham pulled in 12 rebounds and bucketed 9 points. Rhoades swished 19 points, while Ray Howard scored 6 vital points in the closing minutes to thrill the capacity crowd of 6,700.

### MONTANA (71)

	fg	ft	pf
Rhoades	7	5	3
Dunham	2	3	0
Sheriff	2	4	2
Powell	3	5	0
Waters	3	2	4
Howard	3	0	0
Cox	1	0	0

### BRIGHAM YOUNG (63)

	fg	ft	pf
Rowe	1	0	2
Benson	7	3	3
Thacker	2	4	4
Steinke	2	2	1
Anderson, H.	6	4	2
Gustin	0	0	3

25 21 14

## More Facts . . .

Zip Rhoades scored 28 points as MSU lost to Utah State 79-80. Dunham played the finest game of his collegiate career in the 64-60 win over Wyoming by racking up 25 points and 14 rebounds.

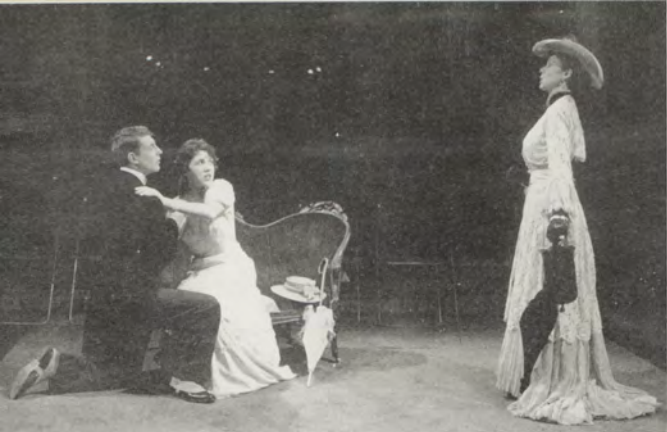
Rhoades scored on 10 out of 15 attempted field goals, made 26 points, and victory against Colorado A&M. gathered in 13 rebounds in the 74-63.

Jim Powell scored 18 points in the second half to lead MSU to an 81-78 win at Wyoming, after the Silvertips had been behind 33-44 at halftime.

Waters' 18 second half tallies weren't enough as Utah downed MSU 84-70.

Zip Rhoades finished 10th, Clancy Waters 11th and Al Dunham 13th in Skyline scoring for 14 games. Their total points were 216, 194 and 180 respectively.





Lady Bracknell surprises her daughter . . .

OSCAR WILDE'S

## the importance of being earnest

Bo Brown, Director

Clemen M. Peck, Technical Director

### CHARACTERS

John Worthing, J. P.	Mr. John Ernest Powell
Algernon Moncrieff	Mr. Bruce Cusker
Rev. Canon Chasuble, D.D.	Mr. Ralph DeLange
Merriman	Mr. John Melton
Lane	Mr. William Kearns
Lady Bracknell	Miss Heather McLeod
Hon. Gwendolyn Fairfax	Miss Beth Briggs
Cecily Cardew	Miss Arlene Jennings
Miss Prism	Miss Sheila Sullivan

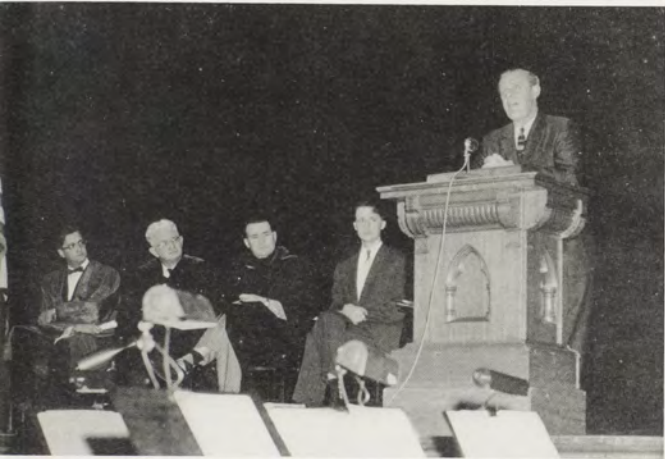
Cecily and Algernon in a tender romantic moment . . .

## theater-in-the-round for farcical comedy

first time in a decade that montana state university has had a major production in-the-round . . . strength of Wilde's play "by a butterfly for butterflies" rested in dialogue . . . expose on the follies of English society . . . teas . . . cucumber sandwiches . . . spats and lineage . . . weak, contrived plot supported by coincidences and identities . . . artificial characters . . .







Richard K. O'Malley speaks to a capacity crowd at montana state university's charter day ceremonies . . . to the left is Dr. N. B. Blumberg, dean of the school of journalism, Dr. Theodore H. Smith, dean of the school of business administration, Robert E. Sullivan, dean of the school of law and Dr. Deane W. Fern, director of the affiliated school of religion. . .

## charter day commemorates msu's sixty-fourth anniversary

montana state university alum and former chief of the associated press bureau in Moscow . . . Richard K. O'Malley reviewed modern Russia and its implications . . . predicted ultimate defeat for communism . . . "despite the strain and tension and the sacrifices we must make . . . we shall in the end win . . . evil never triumphs and that is an evil regime."



queen and king of mardi gras, Dorothy Thomas, kappa kappa gamma, and Lou Griffie, sigma nu.

## dorothy thomas, lou griffe are mardi gras royalty

below are some of the dripping victims of "chance and skill" . . . integrals of the living-group booths which entertained mardi grasers . . . dancing to the combo was also popular . . .





the chorus in the finale . . . Dave Norton, Dolores Pauling, June Patton, Pat Robinson, Jim Beadle, Pat Fox, Pat Shaffer, Willene Ambrose, Byron Christian, Helen Raymond, Ursula Davis, Larry Nitz, Dick Riddle, Carol Aandahl, Sheila McDorney.

## seventeenth annual nite club dance is "destination campus"

musical revue floor show . . . written entirely by university music students . . . mobiles  
and railroad crossing signs decorated tables and ceiling . . . "a trainload of music" . . .



Riley Hunton takes a flying leap in "horsin' round the fountain" . . . counter girls were Myrna Jo Black, Karen DuVall, Laura MacKenzie, Yvonne Kins, Myrna Gee, Larry Johnson and Marvel Lowrance.

montana state university college of fine arts  
presents

# riders to the sea

and

# trial by jury

John Millington Synge's one-act play, "riders to the sea," . . . set to music by Ralph Vaughan Williams . . . story of an old woman who loses her sons at sea . . . "trial by jury" . . . famous satire of a breach of promise case . . . cast all jubileers . . . presented throughout Montana on annual spring tour . . .



## riders to the sea

By John Millington Synge  
Music by R. Vaughan Williams

Bo Brown, Director  
John Lester, Musical Director  
Lloyd Oakland, Choral Director  
Clemen M. Peck, Designer and Technical Director

### CAST

Nora . . . . .	June Patton
Cathleen . . . . .	Dolores Pauling
Maurya . . . . .	Willene Ambrose
Bartley . . . . .	Bob Colness
Women . . . . .	Priscilla Lester, Freda Smith
Chorus (directed by Betty Lou Berland) . . . . .	Ruth Ann Barnicot, Dorothy Brown, Frances Carden, Rose Cavanah, Ann Finley, Donna Kerber, Jean Schlicht, Marlene Shelby, Thelma Stubblefield, Isabelle Wilke.

## trial by jury

Words by Sir William Gilbert  
Music by Sir Arthur Sullivan

as sung by the MSU Jubileers

### CAST

Usher . . . . .	Jim Beadle
Defendant . . . . .	Larry Nitz
Judge . . . . .	Ed Focher
Counsel for Plaintiff . . . . .	Byron Christian
Plaintiff . . . . .	Ursula Davis
Foreman of the Jury . . . . .	Bob Higham
Bridesmaids . . . . .	Carol Aandahl, Willene Ambrose
Myrna Jo Black, June Patton, Dolores Pauling, Helen Raymond, Judy Riddle, Pat Shaffer	
Jury . . . . .	Bob Colness, Merrill Evenson, Pat Fox, Keith Lokensgard, Dave Norton, Dick Riddle
Accompanist . . . . .	Patricia Robinson



# 3400 christmas trees transform field house

forty-four years of forestry history re-created in annual  
foresters' ball . . . 7000 hours of man labor in decorating  
alone . . . unusual sound effects to announce dances . . .



survey of the crowd . .



happy, happy bartenders . . . Denis Croft, Charlie  
Bull, Don Oaks, Jack Foster . . .



delta gamma can-can girls put on a true dance hall number.



The crowning of the military ball queen, Sue Williams, delta gamma, by Cole MacPherson, highlighted the army and air force rote jointly-sponsored affair . . . cup was later exchanged for one of different wording . . .

## **sue williams crowned military ball queen**



Terry Carpenter, freshman, Pat Robinson, sophomore, Donna Kaye Bailey, senior, and Liz Astle, junior, were named the outstanding women of their class by theta sigma phi at the annual award dinner . . . Jayne Walsh, junior in journalism, received a \$100 scholarship . . .

## matrix table honors outstanding women

Mary K. Kimball, rated as one of the ten outstanding graduates of montana state university's home economics department, was matrix table speaker . . . leader in development of packaged cakes, etc. with pillsbury mills, inc. . . . Miss Harriet Miller, state superintendent of public instruction and former associate dean of students, served as toastmistress . . .



Joan Hoff with her special theta sigma phi award given for her four years of outstanding service to the university . . .



## **"aqua annum" features events of the year**

new year's, april fool's day, the county fair and thanksgiving were a few of the year's events portrayed in twelve sequences of the annual aquamaid pageant . . . five performances . . . long, long hours of practice . . .



## world university service drive nets over \$1,000

Bobbie Johnson of corbin hall and Warren Drew of sigma nu won the ugly pair contest . . . winner in juke box singers' contest was Harry Belafonte . . . half of money collected will be used by a Hungarian student who will be on campus next fall . . . Marcia Smith was chairman of the more-than-successful drive . . .

about 65 cars were washed at the co-ed sponsored car wash . . . called off during afternoon because of rain . . . 100 less than last year . . .



the kampus kid . . . arrived on campus to support world university service drive . . . made initial appearance accompanied by a german band . . .



Montana MASQUERS  
1956-1957  
SEASON

"THE SKIN OF  
OUR TEETH"

"THE IMPORTANCE  
OF BEING EARNEST"  
(in the round)

"TWELFTH NIGHT"

SEASON TICKET 2.50  
tickets on sale now  
BY MAIL: BOOTHS - BOX OFFICE  
phone 9-2331

# masquers end season with "twelfth night"

Shakespeare's romantic story of the identical twins Viola and Sebastian, brother and sister . . . separated in a shipwreck . . . both cast upon same island of Illyria and become involved in a hilarious web of mistaken identity . . . toured Montana as annual Shakespeare production . . .

Bo Brown, Director  
Clemen M. Peck, Designer and Technical Director

## CAST

Orsino, Duke of Illyria	Dean Biesemeyer
Curio, gentleman attending on the Duke	Jeff Watson
Valentine, gentleman attending on the Duke	Dan Hoffman
Viola, a young woman, sister to Sebastian	Heather McLeod
A Sea Captain, friend to Viola	John Melton
Sir Toby Belch, uncle to Olivia	Doug Giebel
Maria, Olivia's woman	Marilyn Strickfaden
Sir Andrew Aguecheek	Edward Brodriak
Feste, a Clown and servant to Olivia	Bruce Cusker
Olivia, a countess	Dolores Vaage
Malvolio, steward to Olivia	Gordon Rognlien
Antonio, a sea captain, friend to Sebastian	Merrill Evenson
Sebastian, a young gentleman, brother of Viola	Robert Johnson
Fabian, servant to Olivia	Bill Kearns
An Officer	John Melton
A Priest	Jeff Watson

Bruce Cusker as Feste and Heather McLeod as Viola as they appeared on the program cover . . .



"Skip" Rognlien, who played as Malvolio, involved with actors' ritual . . .





race narrowed to Riddle and Baty when Williamson lost out in primaries . . . no intense overt issues . . . subtle, yet definite split in attitudes towards academia and its activities . . . Riddle's audible campaign headquarters above was manned by walky-talky brothers who also passed out pink lemonade, Kaimins and chatted long distance with the tanning beauties in front of brantly hall . . . the victor, Baty, headquartered in a chuckwagon in front of the lodge . . . passed out cookies and doughnut holes . . . amassed large following from graduating seniors . . .

**asmsu prexy campaign**

**competition soars high**



sigma alpha epsilon . . . first place winner in newman club songfest with their rendition of "the banana boat song" . . . first place in the women's division were the tri delts with "i'm going to wash that man right out of my hair" . . . complete with shaving cream shampoo . . .

## msu hosts 1800 high schoolers



## for 51st interscholastic meet

hula girls entertain as part of the variety show  
in front of the library . . . followed barbecue . . .



Dick Riddle at the keyboard . . .  
one of msu's top entertainers . . .





composite of ballet theater's year . . . upper left . . . Marnie Cooper, director of the ballet theater . . . "soirée in natchez" presented with the civic symphony . . . nite club show . . . "footnotes" . . . lower left . . . "Currier and Ives" . . . nite club show.

## first "evening of ballet" presents four sequences

"harlequinade" . . . inspired by painting by James Dew . . . game of hide and seek of love at the mercy of the Harlequin and his magic hat . . . Riley Hunton as Harlequin, Paula Heidelman as Columbine, Corbin Elliot as Pierrot and Joanna Lester as Pierrette . . . "witch boy" . . . based on the legend of Barbara Allen . . . major roles by Riley Hunton and Joanna Lester . . . "Currier and Ives" . . . repeat performance from the Christmas concert program . . . "footnotes" . . . a gay divertissement in five parts . . .



upper left . . . a sequence from the wallflower waltz . . . two scenes from "harlequinade" . . . lower right . . . "witch boy" . . .



prevalent intensity of discussion . . .



swing swing between sessions . . .

participants chosen by interview from applicants . . . first time . . . other firsts  
 were plenary session for resolutions and scholastic rather than activity-centered  
 discussion . . . located at Belton Chalets, West Glacier . . .

## leadership camp geared to intellectual atmosphere

# baseball data

OPPONENT	SCORE	WHERE PLAYED	OPPONENT	SCORE	WHERE PLAYED
	Mont. Opp.			Mont. Opp.	
Montana State College	2	3 Missoula	Utah U.*	5	10 Missoula
Montana State College	6	5 Missoula	Utah U.*	11	9 Missoula
Idaho State College	10	6 Pocatello, Idaho	Eastern Montana	10	3 Missoula
Idaho State College	12	7 Pocatello, Idaho	Eastern Montana	9	6 Missoula
Utah U.*	1	4 Salt Lake City, Utah	Utah State*	2	8 Logan, Utah
Utah U.*	10	5 Salt Lake City, Utah	Utah State*	5	3 Logan, Utah
Brigham Young U.*	2	4 Missoula	Brigham Young U.*	7	9 Provo, Utah
Brigham Young U.*	6	5 Missoula	Brigham Young U.*	1	3 Provo, Utah
Utah State*	3	9 Missoula	Montana State College	3	1 Bozeman, Mont.
Utah State*	5	10 Missoula	Montana State College	0	7 Bozeman, Mont.

\*Conference Games  
 SEASON RECORD: Won 10 Lost 10  
 CONFERENCE RECORD: Won 4 Lost 8



Montana's baseball team plays its home games at Campbell Field, which is also the home of the Missoula Timberjacks, members of the class C Pioneer League.

## Batting Statistics

Batters	AB	R	H	2B	3B	HR	REI	SB	BA
McGivney	4	4	3		1		1		.750
Robirds	3		2				1		.667
Anderson	6	1	2				1		.333
Stevenson	3	2	1				1		.333
Daley	73	15	24	2	1		8	4	.329
Hunt	52	7	16	3			5	3	.308
Rundle	50	9	15	2		1	8	2	.300
Bennett	47	10	14	3		4	10		.298
Stoleson	18	2	5	1			5		.278
Johnson	64	9	17	2			5		.266
Colvert	73	17	19	3	3		12	1	.260
Schulz	63	9	16		1		7	1	.254
Montgomery	18	1	4				1		.222
Moore	20	1	4	1			3		.200
LeBrun	5		1						.200
Kocsis	28	10	5	1		1	7	4	.179
Haiges	17		3	1					.176
Redmond	35	2	6			7	1		.171
Williamson	56	7	9			1	5		.161
Knapp	2								.000

## PLAY BALL

## Lettermen

Charles Bennett  
 Larry Schulz  
 Don Williamson  
 Don Johnson  
 Eruce Montgomery  
 Charles Moore  
 Gordon Hunt  
 Ron Rundle  
 Jerry Daley  
 Doug LeBrun  
 Lynn Colvert  
 Roland Stoleson  
 Bill Redmond  
 Manfred Haiges  
 Frank Kocsis  
 Duane Anderson  
 Herb White

## Pitching Statistics

Pitchers	G	IP	H	R	SO	BB	W-L	Pct.	ERA
Stoleson	8	42 1/2	44	31	26	15	3-2	.600	6.59
Moore	9	48 2/3	38	19	36	30	3-2	.600	3.51
Schulz	2	14 1/2	14	5	7	6	1-1	.500	.314
LeBrun	2	13	13	5	2	4	1-1	.500	3.46
Montgomery	7	46	40	25	29	32	2-4	.333	4.89



## Western Division Meet

May 18 at Provo, Utah

	Totals
1. Brigham Young U. ....	74
2. Montana State U. ....	33½
3. Utah State .....	30
4. Utah U. ....	27½



Ken Christensen of Utah is shown as he whizzes across the finish line in the 220-yard dash in 20.8 seconds at the conference trackmeet. From left to right are Hal Farmer, Wyoming, second; Paul Collins, Denver, fifth; Ken Nelson, Montana, fourth; Christensen; R. Anderson, BYU; and Ezra Smith, Utah State, fifth.

# track

## Lettermen

Bill Anderson  
Bill Beaulieu  
Jim Black  
Art DeVries  
Mike Granbois  
Jerry Lanz  
Dick Lindsay  
Ron Lundquist  
Ray Merwin  
Hank Mohland  
Ken Nelson  
Ted Nyquest  
Ron Paige  
Pete Rhinehart  
Tom Roe  
Jim Rowland  
Ed Shepherd  
Russ Sheriff  
Paul Sullivan  
Ken Wersland

## Season Summary

DATE	OPPONENT	SCORE		WHERE
		MONT.	OPP.	
April 27	*Brigham Young U. ....	41	90	Missoula
May 1	*Utah State .....	73½	57½	Missoula
	4 Montana State College ..	83	21	Bozeman, Montana
14	*Utah U. ....	80¾	50¼	Salt Lake City, Utah

\*Conference Meets

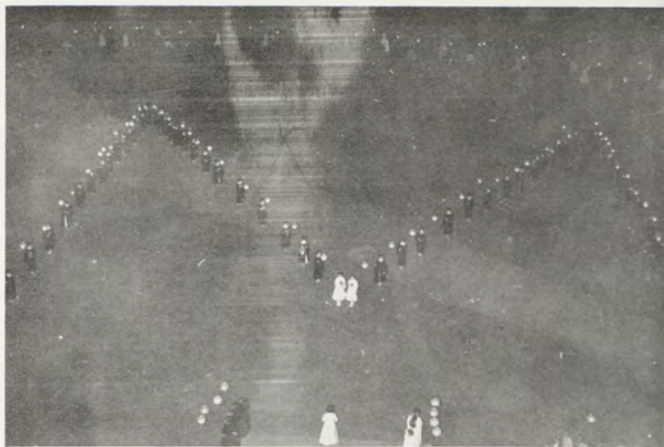
M. Doyel of New Mexico is shown as he attempts to better his leap of 13.7 feet at the conference trackmeet in Missoula. He won first place in the pole vault event.



## Skyline Conference Meet

May 24-25 at Missoula

	Totals
1. Brigham Young U. ....	77
2. Montana State U. ....	36½
3. Utah U. ....	29
4. Utah State .....	25½
5. Denver U. ....	22
6. New Mexico U. ....	19½
7. Colorado State U. ....	8½
8. Wyoming U. ....	7



aws lantern parade . . . . traditional formation of senior women in caps and gowns carrying japanese lanterns . . . . underclass girls light up surrounding circle . . . . new aws officers installed at this time . . . .

# activities of end college



the march to the field house and the diplomas . . . the address by Russell B. Hart . . . and through the breeze the carillons played . . .

# 60th commencement career for 400



**serenades and**



**sunday dinners...**