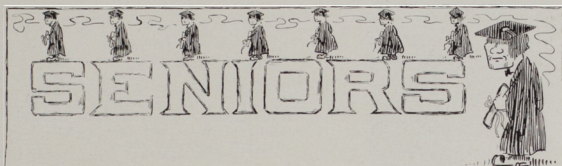


NINETEEN FIFTEEN



President	GORDON WATKINS
Vice-President	GRACE SANER
Secretary	JUNE WHITING
Treasurer	CARL DICKEY

MOTTO

"We Will Find a Path or Make One."

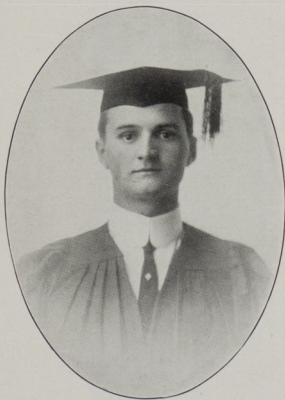
COLORS

Maroon and Gray.

GORDON WATKINS, A. B., *Economics*

Sigma Nu, Tau Kappa Alpha

Fargo College (1) (2); Debate, (3), (4);
 Manager Debate and Oratory (4);
 Hawthorne (3), (4); Y. M. C. A.
 (3), (4); President Y. M. C. A. (4);
 President's prize in History and
 Economics (3); Class President
 (4); Upperclass Council (4).



THE SENTINEL

ESTER MAE BIRELY, A. B.

English Literature

Kappa Alpha Theta, Penetratia

Oberlin College (1); University Play (2), (4); Pan-Hellenic Council (3), (4); Class Vice-President (3); Associate Editor SENTINEL (3); President's prize in Education (3); Dramatic Club (2), (3), (4); Vice-President A. S. U. M., (4); House President (4).

MABEL MARY LYDEN, A. B., *Mathematics*

Delta Gamma, Penetratia

Clarkia (1), (2), (3); Orchestra (1), (2), (3), (4); Science Association (2), (3); Mathematics Club (2), (3); Class Secretary (2); Snap-shot Editor SENTINEL (3); Secretary Self Government Association (3); Exchange Editor Weekly Kaimin (3); Reporter (4); Secretary A. S. U. M. Executive Committee (4).

JUNE WHITING, A. B.

English Literature

Penetratia

University of Minnesota (1); Class Secretary (4).

EARL LEROY SPEER, A. B.

History and Economics

Sigma Nu

Glee Club (1); Hawthorne (1); University Play (1); Manager Tennis Club (2); Manager Dramatic Club (3).

PAUL LOGAN DORNBLASER, LL. B. *Law*

Sigma Chi

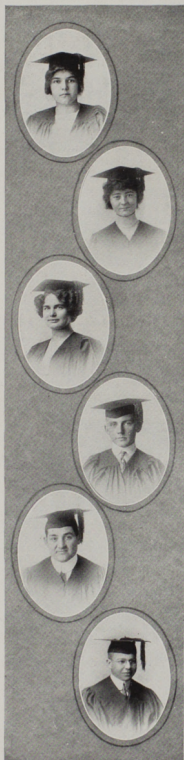
Football (1), (2), (3), (4); Baseball (1), (2); Track (2), (3); Football Captain (3); Tug-of-war 1), (2); Glee Club (1), (2); Y. M. C. A. (2), (3), (4); Hawthorne (3), (4); President A. S. U. M. (4); Upperclass Council (4).

CARL CHANDLER DICKEY, A. B.

History and Economics

Iota Nu, Tau Kappa Alpha

Weekly Kaimin (1), (2); Editor in Chief Weekly Kaimin (3); Debate (2); Writers' Club (3), (4).



NINETEEN FIFTEEN

CATHERINE FINLEY, B. S., *Biology*

ALICE HARDENBURGH, A. B.

English Literature

Kappa Alpha Theta, Penetratia

Clarkia (1); Y. W. C. A. (1), (2), (3), (4); Y. W. C. A. Cabinet (2), (4); Assistant Physical Director for Women (2); Physical Director for Women (3); Y. W. C. A. Treasurer (3); Orchestra (4); A. S. U. M. Executive Committee (3); Organization Editor SENTINEL (3).

BESS MAY WILDE, A. B., *Modern Languages*
Delta Gamma

Y. W. C. A. (1), (2), (3); Y. W. C. A. Cabinet (1), (2); Secretary (3); Clarkia (1); Calendar Editor Women's Pan-Hellenic (3), (4).

GEORGE THOMAS ARMITAGE, A. B.

Journalism and Commerce

Sigma Nu

Writers' Club (1), (2), (3), (4); Chemistry Club (1), (2); President Chemistry Club (2); Circulation Manager Kalmin (1), (2); Class President (2); Joyce Memorial (3); Manager A. S. U. M. (3), (4); Manager Football (4); Manager Basketball (4); Manager Track (4).

HARRY FISHER SEWELL, A. B., *Law*

Sigma Nu, Tau Kappa Alpha

Glee Club (1), (2), (3); Quartette (2), (3); Debate (2); Manager of Debate and Oratory (3); Exchange Editor, Kalmin (1).

LOUIS JAMES FISCHL, Ph. C., *Pharmacy*

(1), (2), Montana State College of Agriculture and Mechanic Arts; (2), Vice-President Pharmaceutical Society; (4) President Pharmaceutical Society.



THE SENTINEL



GRACE YATES SANER, A. B.

English Literature

Kappa Alpha Theta

Literary Editor SENTINEL (3); House Executive Committee (2), (4); Dramatic Club (4); Class Vice-President (4).

HELEN MARY SMITH, A. B., *Modern Languages*

Penetralia

College of Montana (1), (2), (3); Hawthorne (4); Treasurer Hawthorne (4); Y. W. C. A. (4).

ORPHA ANN CULMER, A. B., *Mathematics*

University of Indiana (1); Y. W. C. A. (2), (3), (4).

EDWIN BOONE CRAIGHEAD, JR., A. B., *Law*

Kappa Alpha, Olive Wreath

Tulane (1), (2); Football (1), (2), (3), (4); Track (2), (3); Basketball (1), (2); A. S. U. M. Executive Committee (4).

ELLSWORTH SMITH, LL. B., *Law*

CORNELIUS BOL, B. S., *Physics*

Graduate Holland Technical Schools; Princeton (1), (2) (3); Intercollegiate Socialist Society.