

CRADLE OF THE SOUTH FORK

—Photo by Henry Thol, Courtesy U. S. Forest Service.

The Great South Fork Country

By BILL ALEY, '37

Southeast of Kalispell, and west of the Continental Divide in Montana, lie 625,000 acres of rugged, primitive country. It is the South Fork region of the Flathead River, perhaps one of the wildest and most rugged wilderness areas remaining in the United States.

No roads lead into this great forest wilderness. Reached only on foot or with saddle and pack horses, it remains as it always has been — an untamed land of romance and adventure. Few people have penetrated its fastness, fewer still know it intimately. Some of its secrets are known to its guardians, forest rangers and smokechasers, and to occasional trappers. A few hardy geologists have tapped their way here and there, studying its remarkable structure.

But to others, this is a country of lofty mountains, dramatic in their boldness, with summits rising above green-mantled slopes, where never-failing streams run vigorous and cold, now leaving the virgin forest, now meandering through flowered meadows, a country which remains mysterious and enchanting. It is a land where bear, deer, elk and mountain goat live practically undisturbed by man, a country a hundred miles from the sound of a locomotive, and two days' journey by trail from the noise of an automobile horn.

Its scenic value is without parallel. Along the eastern edge, the peaks and ridges of the Continental Divide rise in a huge escarpment. Against the sky of early morning, they stand silhouetted in violet and blue; the flat lighting of late afternoon brings out details of green timber and silver limestone cliffs.

To the west rise the bulky summits of the Swan Range which look down on beautiful lakes in rocky basins formed by ancient glaciers. From this range lovely valleys, among which is the canyon of Little Salmon Creek, lead down to the main floor of the South Fork.

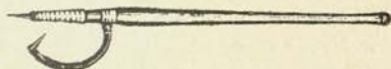
Ages ago a great glacier, born beneath the high peaks now known as the Holland Range, pushed its way downward and eastward and scoured out the valley of Big Salmon Creek, a magnificent expanse of green beauty. The glacier has disappeared long since, but the valley remains as evidence of the tremendous force of this river of ice. Near the mouth of this valley is Big Salmon Lake, a most beautiful sheet of mountain water, cradled between green forested slopes. Rarely does one see a lake more lovely or unspoiled.

Few have followed the unblazed way around the lake and through the valley of Big Salmon Creek — few will. The wilderness that mothers it will remain unspoiled, inviting only occasional and appreciative audiences. It is a spectacular panorama of bold mountain beauty with foaming waterfalls, dark canyons and flowered meadows sharing the stage with the rugged peaks. Elevation changes with breath-taking abruptness, rising and falling several thousand feet in the span of a few miles.

Beyond the valley of the Big Salmon lies the glaciated valley of Smoky Creek, and then on to mountain-top basins where small hidden lakes throw back shafts of sunlight and small meadows are veritable gardens of Alpine

flowers. From there, to the south and north, extend the great peaks of the Swan Range; ahead rises the great Mission Range with its snow fields and glaciers, and twenty-four hundred feet below lies Holland Lake, a timber-girt body of water two miles long.

Nature unchanged for centuries! Mountains that lose their peaks in the clouds, canyons that sink out of sight, virgin forests that unfold as the sea, cold snow-water forming hundreds of unknown lakes in glacial basins, wild life in all its unspoiled beauty — these are some of the secrets of the South Fork wilderness.



A new addition to the equipment of the School of Forestry this year will mean much as an aid to instruction and research within the school. During the winter quarter, a dark room for the purpose of photographic studies was built on the third floor of the forestry building. The room offers possibilities for a wide range of photographic work, such as the making of slides for illustration of lectures, projection of microscopic slides, and keeping a pictorial record of research work. Some of the necessary equipment has been secured, and plans are to perfect the laboratory equipment until all possibilities for photographic work in connection with the forestry school studies can be fulfilled. Professor J. H. Ramskill is in charge of the room, and during this year George Christensen has been his assistant in working up processes which may be applied to forestry photographic work.

During the past school year, the following students dropped out of school to take positions with the Forest Service in the Lake States region: Earl Sparks, Robert Coombs, Jack Oliver, Lester Keilman, John Morrison and Forrest Bauer. From all reports received, our boys are doing a good job while there. Most of them plan on returning to the Montana forestry school next fall.

The School of Forestry has returned to normal this year — that is, the fellows feel that it is more complete — with the return of their Dean. The boys know the importance of the work, as director of the Montana Relief Commission, on which the Dean was engaged for the greater part of two years, but nevertheless they are glad to have him back.

Linc Landall, a member of the Druids and a former student in forestry, demonstrated his ability to choose a wife that is willing to endure the rigorous life of a forester. Linc was appointed on a game survey detail last winter, and took his bride of a short time with him. From all reports, they came through the winter without mishap.



ALUMNI



Wes



Lloyd



Petsch

THE SENIORS



Steve



Dick

Joe



Al



Curley



Alumni Directory

Name	Address
Bunker, Page S.	1904 State Forester, Montgomery, Ala.
Jones, John D.	1906 Care 8th Corps Area Hdqtrs., Fort Sam Houston, Texas
Bonner, James H.	1907 3420 E. First St., Long Beach, Calif.
Farmer, Charles	1909 Sales Engineer, 415 N. Benton Ave., Helena, Mont.
Bishop, Arthur E.	1911 Native Sons Building, Sacramento, Calif.
Hubert, Ernest (M.S. '14)	1912 Professor, School of Forestry, Moscow, Idaho
Thieme, Fred E.	U. S. F. S., Missoula, Mont.
Whitaker, Jocelyn	1914 Bureau of Forestry, 14 Pin Pin, Manila, P. I.
Ade, Harry G.	1915 U. S. F. S., Missoula, Mont.
Whisler, Fred H.	741 Woodford St., Missoula, Mont.
Lansing, Harold (Deceased)	1916
Brooks, James F.	1917 U. S. F. S., Atlanta, Ga.
Kent, Hugh	E. C. W. Camp Supt., 328 S. Clifton Ave., Park Ridge, Ill.
Richardson, William D.	723 Wall St., Los Angeles, Calif.
Simpkins, Edward	Shell Oil Co., 1333 Drake Ave., Burlingame, Calif.
White, Wellington I.	1918 U. S. F. S., 522 Federal Bldg., Milwaukee, Wis.

A GREAT OUTFITTING STORE



OVER Fifty Years' Experience as outfitters has given us practical knowledge of the requirements of the woodsman and outer, and our wonderfully varied and complete stocks fill every need, whether for work or play.

MISSOULA MERCANTILE Co.

MISSOULA, MONTANA

Ask For

Golden Glo Dairy Products

BUTTER :: ICE CREAM
 COTTAGE CHEESE :: PINEAPPLE COTTAGE CHEESE
 MILK :: CREAM :: BUTTERMILK

GOLDEN GLO CREAMERY

Phone 4153

Missoula, Montana

1919

Hayes, Harry F.....Potomac, Mont.

1920

Butler, Everett F.....Draftsman, Ill. Terminal Co., Alton, Ill.

Dacanay, Placido.....Bureau of Forestry, Manila, P. I.

Ireland, Russell A.....108 E. First St., San Dimas, Calif.

Kohner, William G. (M.S.).....111 Hamlet St., Los Angeles, Calif.

Whisler, Harold.....741 Woodford St., Missoula, Mont.

1921

Baker, Clyde P.....Clearwater Timber Co., Lewistown, Idaho

DeJarnette, George.....U. S. F. S., Missoula, Mont.

Dirmeyer, Earl P.....Civil Engineer, Inkster, Mich.

Franco, Felix.....Bureau of Forestry, Manila, P. I.

Hendron, Harold H.....U. S. F. S., 16 S. Hoback St., Helena, Mont.

Radtke, Leonard B.....U. S. I. S., Hoopa, Calif.

Williams, Ross A.....N. Y. State Ranger School, Wanakena, N. Y.

Wolfe, Kenneth.....Great Plains Shelterbelt Project, Lincoln, Neb.

Zeh, William H.....U. S. I. S., 221 Rosenwald Bldg., Albuquerque, N. Mex.

1922

Dexter, Albert K.....Perrin-Curtin Lumber Corp., Kosciusko, Miss.

Hutchinson, Frank E.....D. F. P., 314 Albert St., East Melbourne, Australia

Laraya, Sixto.....Bureau of Forestry, Manila, P. I.

Valderrama, Felipe.....Bureau of Forestry, Manila, P. I.

Warner, Neil G.....Manager, Retail Lumber Yards, Spokane, Wash.

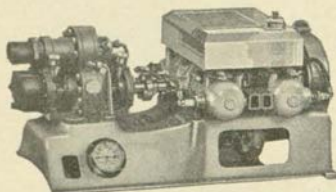
1923

Allen, William S.....319 W. Hill St., Louisville, Ky.

Brady, Paul G.....1409 N. Dearborn St., Chicago, Ill.

Fry, W. E.....U. S. F. S., Missoula, Mont.

Old Reliable PACIFIC PORTABLE PUMPERS



TYPE "N." Over 5,000 in use.
 47 G.P.M. Weight 70 lbs.

Lead all other portable pumpers in sales and popularity because of their weight, efficiency and dependability. Four models—rating from 38 G.P.M. to 100 G.P.M. Send for illustrated literature.

Manufactured in Seattle, U. S. A., by
Pacific Marine Supply Co.

State University

of MONTANA

School of Forestry



Offers---

Graduate and Research work to those who can show satisfactory attainment in their undergraduate work in Forestry or who are desirous of completing research in the forest problems of the Northern Rocky Mountains. Ample equipment and laboratory facilities are provided for research workers.

Undergraduate four-year course leading to the Degree of Bachelor of Science in Forestry, with specialization in Public Service Forestry, Logging Engineering or Range Management.

General Information. The School of Forestry possesses a marked advantage in location. Every forest type of the inland Northwest is found within a few miles of the campus. Two large lumber mills are located within a short distance of the campus. The headquarters of Region One of the United States Forest Service, the Northern Rocky Mountain Forest and Range Experiment Station and the Lolo National Forest are located in Missoula. Within 100 miles of the campus are sixteen National Forests, two other government timber reserves, several state forests and a national park. The Forestry School maintains its own nursery, and a valuable school forest of some 2,000 acres of timber is immediately adjacent to the campus.

For information address

The School of Forestry

STATE UNIVERSITY, MISSOULA, MONTANA

MISSOULA'S FINEST

Park Hotel Cafe and Beer Parlor

WITH PETE AND JOCKO AT YOUR SERVICE

Hoyt, Harrison H. U. S. B. S., 1418 Irving St. NW, Washington, D. C.
 Madsen, Edward G. U. S. F. S., North Fork, Calif.
 McDonald, Charles H. U. S. F. S., Wilson, Wyo.
 Sandvig, Earl D. U. S. F. S., Dillon, Mont.
 Shull, Theodore J. Crown-Willamette Paper Co., Cathlamet, Wash.
 1924

Colville, Leslie L. U. S. F. S., Lakeview, Ore.
 Crowell, Ralph E. U. S. F. S., Munising, Mich.
 Daproza, Juan (M.S. '25) Bureau of Forestry, Manila, P. I.
 Graham, Donald. 1032 Stratmore Ave., Crafton, Pa.
 Kozoil, F. C. U. S. F. S., Weiser, Idaho
 Lambert, Lahman. 33 W. King St., Chambersburg, Pa.
 Myers, Remley. B. P. I., 618 Realty Bldg., Spokane, Wash.
 Nicholas, Charles A. McClure, Va.
 Nickolaus, Howard M. 22 E. North St., Bethlehem, Pa.
 Painter, Wayne. B. P. I., 618 Realty Bldg., Spokane, Wash.
 Riley, Marvin. B. P. I., 618 Realty Bldg., Spokane, Wash.
 Zamansky, Allan. 614 F. St. SW, Washington, D. C.
 1925

Blitney, Raymond H. U. S. I. S., Bemidji, Minn.
 Brown, Walker L. State Highway Commission, Missoula, Mont.
 Caguioa, Vincente. Bureau of Forestry, Manila, P. I.

SIMONDS SAWS

Are the Best

~~~~~  
 A slogan proven by 100 years'  
 experience.

~~~~~  
**Simonds Saw
 and Steel Co.**

Established 1832
FITCHBURG, MASS.
 Portland - Seattle - San Francisco
 Los Angeles - Vancouver, B. C.

Sturdy OUTDOOR CLOTHES

for

**Outdoor
Men**
at

McCRACKEN'S

STUDIO OF
ACE WOODS
Photographer

Wilma Bldg. Dial 5364

MISSOULA

FISHING, HUNTING, PAINT-
ING, HOUSEHOLD Supplies
SAGER AXES

Barthel Hardware

The Store of Fine Housewares

Between Higgins Avenue and the
Postoffice

DAD AND THE BOYS
Appreciate Your Business

Cramer, John Arthur.....	U. S. F. S., Livingston, Mont.
Fields, Ralph E.....	U. S. F. S., St. Maries, Idaho
Hicks, Harold W.....	U. S. B. S., Washington, D. C.
Lee, Bernard.....	U. S. F. S., Pendleton, Ore.
Rowland, Thomas.....	U. S. F. S., Missoula, Mont.

1926

Baggs, John T.....	Potlatch Forests, Inc., Lewiston, Idaho
Beall, Carl F. (M.S. '30).....	U. S. I. S., Fort Defiance, Ariz.
Bowers, Raymond.....	U. S. F. S., Sheridan, Mont.
Burtness, Allen C.....	State Dairy & Food Commission, Harmony, Minn.
Canfield, Roy.....	U. S. F. S., Jornada Range Res., La Cruces, N. Mex.
Lukens, Stanley.....	U. S. F. S., Wisdom, Mont.
Merryfield, Leroy.....	Manager, Hodges Ranch, Ennis, Mont.
Preston, John C.....	U. S. N. P. S., Estes Park, Colo.
Russell, Harold.....	U. S. F. S., Orofino, Idaho
Thompson, John B.....	U. S. F. S., Priest River, Idaho
Van Meter, Thomas.....	U. S. F. S., Boise, Idaho

1927

Bischoff, Paul.....	Asst. Prof. For. Lang., U. of M., Missoula, Mont.
Bloom, Charles W.....	U. S. F. S., Missoula, Mont.
Darlington, Josephine.....	812 Cherry St., Missoula, Mont.
Kumler, Charles G.....	Heinz Lumber Co., Lewisburg, Ohio
Logan, Jose B.....	Bureau of Forestry, Manila, P. I.
Richards, Everett E.....	U. S. F. S., Missoula, Mont.
Roemer, Alban A.....	U. S. F. S., Missoula, Mont.
Rubottom, Carter B.....	U. S. F. S., Livingston, Mont.
Shaw, Donald W.....	U. S. F. S., Glenwood Springs, Colo.
Spencer, Mattison.....	U. S. F. S., 348 Baronne St., New Orleans, La.
Tennant, Earl.....	U. S. F. S., Lolo, Mont.
Van Winkle, Harry.....	U. S. F. S., Mackay, Idaho

Cigars : Cigarettes
Tobacco : Candy
Beer on Draught

—
**CORNER
CIGAR STORE**

"Where the Gang Meets"

*Flowers for All
Occasions*

**GARDEN CITY
FLORAL CO.**

Home Grown Flowers

QUALITY MARKET, Inc.

J. A. BACHMAN & SONS, Props.

FRESH, SALT AND SMOKED MEAT AND GROCERIES
A Complete Line of Foods for Parties and Picnics

614-616 S. Higgins Ave.

Missoula, Montana

Phones: 3197-3198

1928

Adams, Barkes L.	Weyerhaeuser Timber Co., Longview, Wash.
Anderson, Homer E.	Supt. of Schools, Columbus, Mont.
Bonner, Frank E. (Hon.)	Consulting Engineer, Piedmont, Calif.
Campbell, Lloyd S.	Intermountain Transportation Co., Missoula, Mont.
Davis, Kenneth	U. S. F. S., Missoula, Mont.
Emerson, John L.	Cen. Gt. Plains Ex. Sta., Cheyenne, Wyo.
Matthew, Lewis S.	N. D. School of Forestry, Bottineau, N. Dak.
Merrill, Lee P.	916 N. 5th St., Tacoma, Wash.
Schwan, Herbert E.	U. S. F. S., Billings, Mont.
Spaulding, Clarence K.	U. S. F. S. Game Survey, Missoula, Mont.
Tennant, Raymond	U. S. F. S., Orofino, Idaho

1929

Ashbaugh, Leonard J.	U. S. F. S., Escanaba, Mich.
Averill, Clarence	U. S. F. S., Deadwood, S. D.
Cornell, Gordon T.	U. S. F. S., Missoula, Mont.
Dix, Howard	Interstate Lumber Co., Butte, Mont.
Ernst, Emil F.	Ranger Forester, Yosemite Nat. Park, Yosemite, Calif.
Flock, K. D.	U. S. F. S., Dillon, Mont.
Fritz, Nelson H.	519 McCabe Ave., Wilmington, Del.
Frost, Levi M.	U. S. F. S., Glenwood Springs, Colo.
Jackson, Chester (M.S. '33)	U. S. F. S., Ashland, Mont.

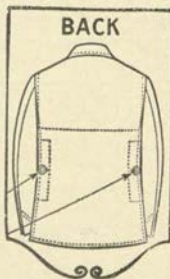
WOOLRICH ALL WOOL OUTDOOR CLOTHING

Cruisers

Stags

Shirts

Blazers



Socks

Pants

Breeches

Mittens

Woolrich Woolen Mills

JOHN RICH & BROS.

WOOLRICH, PA.

Sold in
Missoula by

WESTERNER'S, Inc.

Men's
Outfitters

State University

--- of ---

The University of Montana

"The University Between the Parks"



1935 SUMMER SESSION

Combine summer study with summer recreation at the State University at Missoula. Week-end excursions to nearby places of rare scenic beauty and of absorbing historic interest. Ideal summer climate. Low living costs — board and room at University dormitories \$60 for entire nine-week session. Montana Educational Conference open to summer students.

SIX-WEEKS TERM

June 10 to July 19 or July 1 to August 9

NINE-WEEKS TERM

June 10 to August 9

Courses in Biology, Botany, Business Administration, Creative Writing, Dramatics, Economics, Education, English, Fine Arts, French, Geology, German, Greek, History, Journalism, Latin, Law, Library Economy, Mathematics, Music, Political Science, Psychology, Physical Education, Sociology and Spanish.



For Bulletins Address

DIRECTOR OF THE SUMMER SESSION

State University, Missoula, Montana

DaCo HAM

DaCo LARD

DaCo BACON

JOHN R. DAILY, Inc.

115 West Front—Phone 2181

PACKERS OF **DaCo** MEAT PRODUCTS

Service and Quality

MONTANA PAYROLL PRODUCTS

Johnson, James W. E. C. W. Foreman, Morristown, Tenn.
 Krofchek, Andy W. U. S. F. S., Cache, Okla.
 Luer, Elmer E. U. S. F. S., Missoula, Mont.
 Nelson, Donald W. U. S. F. S. Shelterbelt Proj., Lincoln, Neb.
 Rouse, Charles. U. S. B. S., Nome, Alaska
 Staat, Fred F. Camp F13, Bena, Minn.
 Vierhus, Louis M. E. C. W. Camp Supt., Ashland, Mont.
 Yochelson, Albert. Calif. Exp. Station, Berkeley, Calif.

1930

Aiton, John F. Forester, Glacier National Park, Belton, Mont.
 Dahl, Jerome. U. S. F. S. Shelterbelt Proj., Lincoln, Neb.
 Fallman, John Arthur. U. S. I. S., Cheyenne Agency, S. Dak.
 Grove, Joseph. U. S. F. S., Milwaukee, Wis.
 Jost, Edwin J. U. S. F. S., Orofino, Idaho
 Joy, Charles. U. S. F. S., Butte, Mont.
 Leavitt, Roswell. U. S. F. S., Naples, Idaho
 Lommasson, Tom. U. S. F. S., Washington, D. C.
 Mass, Fred H. U. S. F. S., Missoula, Mont.
 Mathews, J. Thomas. U. S. F. S., Salt Lake City, Utah
 Park, Barry C. U. S. F. S., Washington, D. C.
 Phillips, Floyd. U. S. I. S., Browning, Mont.
 Rudolph, Rosser. U. S. I. S., Washington, D. C.

1931

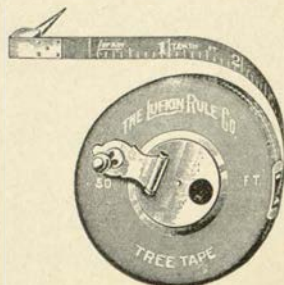
Brown, William J. U. S. F. S., Grand Marias, Minn.
 Calkins, Raymond. U. S. F. S., Ogden, Utah
 Centerwall, Willard. U. S. I. S., Lame Deer, Mont.
 Clark, Ellis. U. S. F. S., Rhinelander, Wis.
 Murchie, Archie. U. S. F. S., Wasatch Nat. Forest, Salt Lake City, Utah

LUFKIN TAPESFor Engineering, Surveying, Timber
Cruising and all General RequirementsWood and Metal Rules
Board and Log Rules

Send for Catalog

THE LUFKIN RULE CO.

Saginaw, Mich.



Burr, Patterson & Auld Company

America's Oldest Manufacturing Fraternity Jewelers

Sole Official Jewelers to DRUIDS
and to over one hundred National
Fraternities and Sororities.

DETROIT - - - MICHIGAN

MISSOULA LAUNDRY CO.

"Dry Cleaners"

Phones 3118 and 3119

Oren, Eugene	CCC Camp 131, Driftwood, Pa.
Rector, Charles M.	U. S. F. S., Prineville, Ore.
Redding, Hugh	U. S. F. S., Alexandria, La.
Sadasuk, Jacob Jack	CCC Camp 60, Chatsworth, N. J.
Smith, Howard S.	1801 Market St., Harrisburg, Pa.
Tucker, David M.	U. S. N. P. S., Yosemite Nat. Park, Calif.
Walker, Carl S.	E. C. W. Camp Supt., Crook, S. Dak.
Carlson, Sture	U. S. N. P. S., Yosemite Nat. Park, Calif.

1932

Beechel, Kenneth	516 S. 5th St., E., Missoula, Mont.
Centerwall, Bruce	Camp F15, Bena, Minn.
Chapin, Wilbur	School of Forestry Nursery, Missoula, Mont.
Cooney, Robert F.	U. S. F. S. Game Survey, Augusta, Mont.
Flint, Alfred	U. S. F. S., Missoula, Mont.
Fobes, Eugene W.	CCC Camp Supt., Palace, Mo.
Guntermann, William F.	U. S. F. S., Missoula, Mont.
Hawes, Evans C.	U. S. F. S., New Castle, Va.
Hoye, Oliver	Camp 58-PE, Havana, Ill.
Ibenthal, William A.	U. S. F. S., Missoula, Mont.
Larson, Stanford H.	U. S. F. S., Missoula, Mont.
Love, Iver B.	E. C. W. Camp, Custer, S. Dak.
O'Neil, Charles	U. S. F. S., 509 First Ave. W., Kalispell, Mont.
Renshaw, James	Coweeta Experimental Forest, Dillard, Ga.
Shields, John	U. S. F. S., Missoula, Mont.
Spaulding, Alfred E.	U. S. F. S., Orofino, Idaho
Stillings, Warren	U. S. F. S., Coeur d'Alene, Idaho
Woolfolk, E. Joe	U. S. R. L. Ex. Sta., Miles City, Mont.
Young, A. E.	U. S. Soil Erosion Service, Pullman, Wash.

INDIAN FOREST FIRE PUMP



A great FIRE FIGHTER for camp, cottage, home, estate, farm, lumber and fire companies. Uses clear water, no chemicals. Heavy galvanized 5-gallon tank straps on back; large brass filler opening; adjustable carrying straps; strong hose; solid brass pump throws 50-foot fire stream with ease. Always works. Thousands in use. Highly recommended by forest officials and fire departments. Satisfaction or money refunded. Catalog free. D. B. SMITH & CO. • DEPT. S • UTICA, NEW YORK

Used by State and Federal Foresters, CCC camps, lumber camps, etc., for fighting forest, brush and grass fires. The best extinguisher made for this work. Also finest outfit for Blister Rust control work. The most widely used outfit for this work made in this country.

MISSOULA HARDWARE & PLUMBING CO.

228 North Higgins Ave., Phone 5390

Double waterproofed pack sacks, Kelley cruiser axes, knives, guns and ammunition.

1933

Benson, Fred	U. S. F. S., Missoula, Mont.
Curtiss, Frank	U. S. F. S., Ennis, Mont.
Davis, William	U. S. F. S., Niceville, Fla.
Evenson, Millard	E. C. W. Camp, Alberton, Mont.
Frykman, Joel	U. S. F. S., Missoula, Mont.
Matsen, Robert	U. S. I. S., Fort Defiance, Ariz.
Neff, Lawrence	U. S. F. S., Houston, Mo.
Whitaker, Dick	U. S. F. S., Box 444, Sandpoint, Ida.
White, Jack	U. S. F. S., Camp F13, Munising, Mich.
Pool, Walter E.	U. S. F. S., Eagle River, Wis.

1934

Day, Ralph K. (M.S.)	Central States For. Ex. Sta., Columbus, Ohio
Hall, Rufus H.	U. S. F. S., St. Anthony, Idaho
Hancock, Morris O.	U. S. F. S., Rhinelander, Wis.
Harris, Lester L.	U. S. F. S., Missoula, Mont.
Hinman, John F.	U. S. F. S., Missoula, Mont.
Quinlin, Frank Carter	U. S. F. S., Harrisburg, Ill.
Stephens, Virgil	E. C. W., 812 W. Broadway, West Plains, Mo.
Welton, Earl	E. C. W. Camp F10, Rapid City, S. Dak.

Patronize FORESTRY KAIMIN Advertisers



When you ask for wool underwear be sure you get it—pure wool, the kind you would get if you went out on a ranch and yanked it off a sheep's back.

Wright's all-wool brand of underwear is made from nature's best. Scientific manufacture with the finest material obtainable is insurance for comfort and long wear.

WRIGHT'S

Health Underwear

At Westerners, Inc.

SPECIALS

Pence-Ketchum—
Surveying Manual

Tracy—
Plane Surveying

Rydberg—
Key to Rocky Mt. Botany

Coulter-Nelson—
Manual Rocky Mt. Botany

Many other Books on Botany
and Forestry

We also carry Field Notebooks, Slide Rules, Tracing Cloth, Castell Drawing Pencils, Drafting Sets.

**Associated Students'
Store**

Missoula, Montana

LUMBER

Ponderosa Pine

*Montana Larch
and Fir*

Red Cedar Shingles
Millwork—Boxes

INTERSTATE
LUMBER CO.

"Quality Building Materials"

Good Forests

Need

Good Foresters

Good Foresters

Need

Good Wholesome Food

That's why they eat plenty of

Herrick's
FAMOUS
ICE CREAM

Makers of Pecan Krunch
Western Montana's Pride

Phone 3184

Forestry Cloth Cruiser

Made by Filson—a name that signifies quality in all outing garments. Forestry Cloth is an all-wool forest green material (cravanned). The Filson Crusier insures comfort, convenience, service, fine appearance and weather protection. Plenty of pockets—the whole back a pocket with flaps and fasteners.

Also made in olive drab mackinaw, popular with foresters and CCC workers; and in wind-proof water-resistant shedpel khaki.

Cruising Coat and Laced Breeches of same material make an ideal uniform.

Write for Free Catalog

C. C. FILSON CO.

1001-3 Second Ave., Seattle, Wash.



Student Register, 1934-1935

Name and Address	Year	Quarters Attended
Ailport, John, Milltown, Montana.....	Fr.	1,2,3
Akin, Melvin, Missoula, Montana.....	Fr.	1,2,3
Aley, William, Big Fork, Montana.....	So.	1,2
Andersen, Leif, Missoula, Montana.....	Jr.	1,2,3
Atwood, Dwight, Glendive, Montana.....	Fr.	2,3
Augenstein, J. W., Delaware, Ohio.....	So.	2
Axlund, Don, Casper, Wyoming.....	Fr.	1,2,3
Bailey, John, Havre, Montana.....	Jr.	3
Bauer, Forrest, Polson, Montana.....	Jr.	1,2
Berg, Jacob, Missoula, Montana.....	Jr.	1,2
Biehl, Clarence, Lewistown, Montana.....	Fr.	1,2,3
Bolle, Arnold W., Watertown, Wisconsin.....	Gr.	1,2,3
Bonawitz, Norval, Lewistown, Montana.....	So.	1,2,3
Bosseler, John, Dutton, Montana.....	So.	1,2,3
Brierley, Tom, Missoula, Montana.....	Jr.	1,2,3
Brooks, George, Mt. Shasta City, California.....	So.	2,3
Buckhous, Jack, St. Ignatius, Montana.....	Jr.	1,2,3
Bushelle, James, Lewistown, Montana.....	Fr.	1
Campbell, Alastair, Camas, Montana.....	Sr.	1,2,3
Campbell, Tom, Missoula, Montana.....	So.	1,2,3
Carpenter, Charles, Hamilton, Montana.....	Fr.	1
Castles, John, Superior, Montana.....	Fr.	1,2,3
Christensen, George, Missoula, Montana.....	Jr.	2,3
Clemow, Joe, Billings, Montana.....	So.	1,2,3
Cox, Gene, Helena, Montana.....	Fr.	1,2,3
Cram, Stanley, Missoula, Montana.....	Fr.	2
Crisafulli, Joseph, Glendive, Montana.....	Fr.	1,2,3

YOUR TRADE JOURNAL

—should be consistently read, for it will help you in forming a clearer understanding of how things are done in the work-a-day world. Its little journeys into the realm of operating activity will be interesting as well as helpful in after life.

The TIMBERMAN

An International Lumber Journal

GEO. M. CORNWALL, Editor, Portland, Oregon



Forester
HAND MADE SHOES
TRADE MARK REG

MAKES GOOD LOGGERS
BETTER

YANDT'S



425 North Higgins

Missoula, Mont.

Cunningham, William Penn, Missoula, Montana.....	Fr.	1,2,3
Currie, Fred A., Missoula, Montana.....	Fr.	1,2,3
Cyr, Frederic D., Hot Springs, Montana.....	Fr.	1
Demorest, Louis, Chicago, Illinois.....	Gr.	1,2,3
D'Ewart, William, Wilsall, Montana.....	So.	1
Dickman, George, Missoula, Montana.....	Fr.	1
Diercks, John, Glendive, Montana.....	So.	3
Doak, Dean A., Twin Bridges, Montana.....	Fr.	1,2,3
Dobbs, Ralph W., Brookline, Massachusetts.....	So.	1,2,3
Doering, John M., Missoula, Montana.....	So.	1,2,3
Dominek, Julian, Westby, Montana.....	Jr.	1,2,3
Donovan, Edwin, Elliston, Montana.....	Jr.	2
Doyle, James D., Monida, Montana.....	So.	1,2,3
Dresskell, Wilfred, Missoula, Montana.....	Jr.	1,2,3
Edmond, Millard, Missoula, Montana.....	So.	1,2,3
Ellingson, Leslie A., Valier, Montana.....	Fr.	1,2,3
English, Lloyd, Dillon, Montana.....	So.	2,3
English, Thurman, Dillon, Montana.....	So.	1
Erickson, Vernard, Missoula, Montana.....	Fr.	1,2,3
Erwin, Orval, Charlo, Montana.....	Jr.	1,2,3
Eschwig, Henry, Whitefish, Montana.....	Fr.	1,2,3
Falacy, Theodore, Missoula, Montana.....	So.	1,2,3
Farmer, Robert, St. Regis, Montana.....	Fr.	1,2,3
Fletcher, Marvin, Miles City, Montana.....	Fr.	2
Forgey, Louis, Miles City, Montana.....	So.	1,2,3
Gable, George H., Rocky Boy, Montana.....	Sr.	1,2,3
Gage, Gwynn, Missoula, Montana.....	Jr.	2,3
Gallup, Richard G., Sunburst, Montana.....	Sr.	1,2,3

SAGER CHEMICAL PROCESS AXES AND BULL DOG LOGGING TOOLS

Recognized All Over the United States as
the BEST Money and Skill can produce.

WARREN AXE & TOOL CO.

Warren, Pennsylvania, U. S. A.

Write for Catalog

Gamwell, Richard L., Butte, Montana.....	Fr.	1
Garrison, J. Milton, Fort Benton, Montana.....	Fr.	1,2,3
George, H. Welby, Missoula, Montana.....	So.	1,2,3
Gervaglia, James, Butte, Montana.....	Fr.	1,2,3
Godfrey, Horace, Whitefish, Montana.....	Fr.	1,2,3
Goss, Harlie, Williams, Arizona.....	Fr.	1,2
Grantier, Jesse L., Salt Lake City, Utah.....	Fr.	1,2,3
Graves, Frederick, Laurel, Montana.....	Fr.	1,2,3
Griffin, Fred, Livingston, Montana.....	Fr.	1,2,3
Hague, Lloyd, Missoula, Montana.....	Sr.	1,2,3
Haller, Frederick, Chicago, Illinois.....	Fr.	1,2,3
Hamilton, Bob, Missoula, Montana.....	Fr.	1,2,3
Hamilton, Bill, Missoula, Montana.....	Fr.	2
Hamilton, Reid, Missoula, Montana.....	Fr.	2,3
Hansen, Ralph H., Billings, Montana.....	Fr.	1,2,3
Harden, E. Wesley, Whitehall, Montana.....	Sr.	1,2,3
Hardy, Charles E., Fullerton, California.....	Fr.	1,2,3
Healy, Robert, Missoula, Montana.....	Fr.	1,2
Heaphy, Matthew, Deer Lodge, Montana.....	Fr.	2,3
Heckert, Raymond, Missoula, Montana.....	So.	1,2
Helding, Arnold, Missoula, Montana.....	Fr.	1,2,3
Hennings, James, Evanston, Illinois.....	Jr.	1,2,3
Hileman, Robert, Whitefish, Montana.....	Fr.	1,2,3
Hinman, George B., Rapelje, Montana.....	So.	1,2,3
Hobe, Alfred, Missoula, Montana.....	Fr.	2
Horn, J. J., Kalispell, Montana.....	Fr.	1
Hudson, Duard, Cardston, Alberta, Canada.....	So.	1,2,3
Hurwitz, Burt, Olean, New York.....	Fr.	1,2,3
Huser, Stanley, Whitefish, Montana.....	So.	1,2,3
Isaacson, John, Missoula, Montana.....	So.	2
Jansson, J. Robert, Chicago, Illinois.....	Fr.	1,2,3

J. Neils Lumber Company

MILLS AT
LIBBY, MONT. KLUCKITAT, WASH.

Ponderosa Pine
Idaho White Pine and
Montana Larch and Fir
Washington Fir

We can combine all of the above woods in single car lots. Try some of our Kiln Dried Fir Dimension in your next car of Ponderosa or Idaho White Pine, also any other items of Fir that you may need to fill in.

REPRESENTATIVES

J. C. Roche, 649 Security Bldg., Minneapolis, Minn.
Paul W. Curtis, Glasgow, Mont.
M. W. Christie, Box 1387, Great Falls, Mont.
LeRoy Johnson, 308 W. Wash. St., Chicago, Ill.
O. J. Brendgord, 303 Fifth Ave., New York, N. Y.
Cowan & Cowan, Waterloo, Iowa
Noll-Welty Lumber Co., Kansas City, Mo.
Prestegaard Lumber Co., 1014 Terminal Bldg., Lincoln, Neb.
Jewett Lumber Co., Terminal Annex, P. O. Box 5036, Denver, Colo.

Jenkins, Walter L., Missoula, Montana.....	So.	1
Johnson, J. W., Jr., Hamilton, Montana.....	Fr.	1,2,3
Johnson, Leon, Ellsworth, Kansas.....	Fr.	1,2,3
Jones, Emerson, Missoula, Montana.....	Fr.	1,2,3
Jones, Horace, Missoula, Montana.....	So.	1,2,3
Keilman, L. A., Hobson, Montana.....	Jr.	1
Keithley, Walter, Miles City, Montana.....	Fr.	1,2,3
Kendall, C. Richard, Lima, Montana.....	Fr.	2,3
Kerin, Tom, Libby, Montana.....	Fr.	1,2,3
Kirkpatrick, Franklin, Middleport, New York.....	Fr.	1
Knutson, Alton L., Devon, Montana.....	Fr.	1
Konopatzke, Leo, Havre, Montana.....	Jr.	3
Korkalo, Roy, Missoula, Montana.....	Fr.	1,2
Lawrence, Mark, Missoula, Montana.....	Gr.	2,3
Lee, Harry A., Wolf Point, Montana.....	Fr.	1,2,3
Lewis, Harold, Lavina, Montana.....	So.	1,2,3
Lewis, Kenneth E., Lavina, Montana.....	Fr.	1,2
Lohn, Dwight, Wolf Point, Montana.....	Fr.	1,2,3
Lumby, Robert, Missoula, Montana.....	So.	2,3
Lynch, Donald, Highwood, Montana.....	Fr.	1,2,3
MacLaren, James P., Moccasin, Montana.....	Fr.	1,2,3
McCall, Henry, Whitehall, Montana.....	Fr.	1,2,3
McClain, Hall H., Garden Grove, California.....	Jr.	1,2,3
McKee, Max H. D., Christchurch, New Zealand.....	So.	2,3
McKee, Tom, Butte, Montana.....	Fr.	1,2,3
McLaughlin, Robert, Missoula, Montana.....	Fr.	1,2
McLure, Bill, Missoula, Montana.....	Fr.	1,2,3
Mahrt, George, Bonner, Montana.....	Fr.	1,2,3
Malone, Francis, Missoula, Montana.....	Jr.	2
Miller, Jack, Missoula, Montana.....	Fr.	1,2,3
Miller, Russell, Missoula, Montana.....	So.	3

Jewelry Silverware and Watches



*Latest Styles and
Fashions*

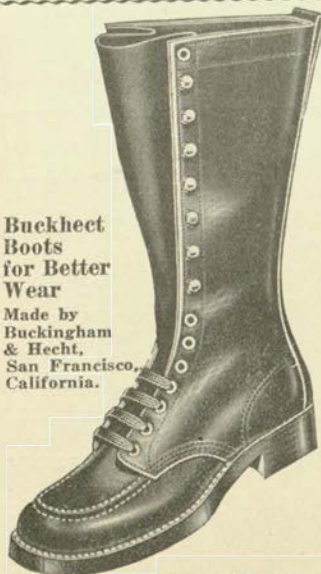


**B. & H.
Jewelry Co.**

Corner Higgins and Main
MISSOULA, MONT.

**Buckhect
Boots
for Better
Wear**

Made by
Buckingham
& Hecht,
San Francisco,
California.



Yandt's Missoula
Montana

Miller, Stanley, Missoula, Montana.....	Jr.	1,2,3
Mitchell, Thomas M., Dayton, Ohio.....	Sr.	1,2,3
Moody, Robert, St. Ignatius, Montana.....	So.	1,2,3
Morrison, John, Livingston, Montana.....	Jr.	1,2
Muchmore, Phil, Missoula, Montana.....	Fr.	1, 3
Myers, R. M., Missoula, Montana.....	Jr.	1,2,3
Nafus, Vernon, St. Ignatius, Montana.....	Fr.	1,2,3
Nash, James, Omaha, Nebraska.....	Jr.	1,2,3
Neff, George, Missoula, Montana.....	Fr.	1,2,3
Nelson, Dan S., Missoula, Montana.....	Jr.	1,2,3
Nelson, Frank A., Crow Agency, Montana.....	Fr.	1,2,3
Nelson, Myers, St. Ignatius, Montana.....	Fr.	1
Nelson, Reuben A., Usk, Washington.....	Fr.	1,2,3
Nelson, Richard, Whitefish, Montana.....	Fr.	2,3
Newton, Bruce W., Joliet, Montana.....	Fr.	1,2,3
Nouslanen, Arne O., Florence, Montana.....	So.	1,2,3
Noyes, Leonard, Missoula, Montana.....	Fr.	1,2,3
Ogg, Bill, Missoula, Montana.....	Fr.	1,2
Oliver, Jack, Anaconda, Montana.....	Jr.	1
Payne, Gene F., Columbus, Montana.....	So.	1,2,3
Pendleton, Vincent J., Wisdom, Montana.....	Fr.	1,2,3
Peterson, Bob, Libby, Montana.....	Fr.	1
Peterson, Harold, Dell, Montana.....	Fr.	2
Peterson, Leonard, East Helena, Montana.....	So.	1,2,3
Petersen, William, Long Beach, California.....	Fr.	1,2,3
Petsch, Walton, Spokane, Washington.....	Sr.	1,2,3
Pickens, Wesley, Huntley, Montana.....	So.	1,2,3
Pickett, Solista, Missoula, Montana.....	So.	1,2,3
Polley, Foster, Ronan, Montana.....	Fr.	1,2,3
Pomajevich, Joseph, Missoula, Montana.....	Fr.	1,2,3
Pool, Clifford, Torrington, Wyoming.....	So.	1,2,3

BARKER BAKERY, Inc.

Caters to all party orders in delicatessen or pastries. Barker's complete line of fresh bread and rolls will please you.



Try Barker's Quality Products



Phone 4487

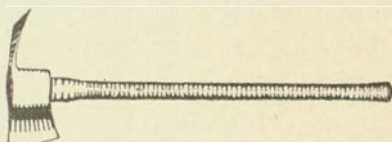
Preston, Phil, Great Falls, Montana.....	Fr.	1,2,3
Preuss, William P., Los Angeles, California.....	Fr.	1,2,3
Price, John R., Missoula, Montana.....	So.	1,2,3
Quam, Norris, Great Falls, Montana.....	Fr.	1,2,3
Ranney, John, San Diego, California.....	Fr.	1,2,3
Rickard, Hugh A., Powell, Wyoming.....	Fr.	1,2,3
Robbins, Lester, Circle, Montana.....	Sr.	1,2,3
Robins, Charles R., Butte, Montana.....	Fr.	1,2,3
Roskie, George, Billings, Montana.....	Sr.	1,2,3
Ross, James, Fromberg, Montana.....	So.	1,2
Samuel, Ernest, Lewistown, Montana.....	Fr.	1,2,3
Sanders, Dick, Lewistown, Montana.....	Fr.	1,2,3
Schaertl, Richard L., Stevensville, Montana.....	Fr.	1,2,3
Scheytt, Julian, Maudlow, Montana.....	So.	1,2
Schramm, Charles, Cedaredge, Colorado.....	So.	1,2,3
Shaw, Walter, Missoula, Montana.....	Fr.	1,2
Shelton, Jimmy, Denton, Montana.....	Fr.	1,2,3
Simons, Ed, Dillon, Montana.....	Fr.	2,3
Skelton, John W., Noxon, Montana.....	Fr.	1
Smalley, Winston, Roundup, Montana.....	So.	2,3
Smart, Donald, Harlowton, Montana.....	Fr.	1,2
Smith, Thomas E., Missoula, Montana.....	Fr.	1
Stanton, Frank W., Yellowstone Park, Wyoming.....	Fr.	1,2,3
Steck, Dale, Clinton, Montana.....	Fr.	1,2
Stephenson, Albert D., Missoula, Montana.....	Sr.	1,2,3
Stevens, Terrill, Los Angeles, California.....	Jr.	1,2,3
Strubeck, Earl, Plentywood, Montana.....	Fr.	1,2,3
Swan, Herrick, Billings, Montana.....	Fr.	1,2,3
Swan, Joe, Missoula, Montana.....	So.	1
Swartz, Jack, Pryor, Montana.....	Fr.	1,2,3
Trosper, William, Ronan, Montana.....	So.	1,2,3
Trussell, Homer E., Hardin, Montana.....	Fr.	1,2,3
Tyro, Frank, Jr., Dillon, Montana.....	Fr.	1,2,3
Valiton, Richard, Missoula, Montana.....	Fr.	1,2,3
Varney, Richard, Idaho Falls, Idaho.....	Jr.	1,2,3
Venrick, John N., Absarokee, Montana.....	So.	1,2,3
Vladimiroff, Boris, Chicago, Illinois.....	Fr.	3
Wagner, Bill, Missoula, Montana.....	So.	1,2,3
Wagner, Joseph, Missoula, Montana.....	Sr.	1,2,3
Walker, Bob, Great Falls, Montana.....	Fr.	1,2,3
Walworth, Maurice, St. Ignatius, Montana.....	So.	1,2
Watters, Billy, Missoula, Montana.....	Fr.	1,2,3
Watters, Ronald, Missoula, Montana.....	So.	1,2,3
Welton, Howard, Townsend, Montana.....	Sr.	1,2,3
Wheat, Herbert, Dillon, Montana.....	Fr.	2,3
Wheatley, Howard, Missoula, Montana.....	Fr.	1,2,3

Highlander
BEER

MISSOULA
BREWING CO.

Patronize
Forestry Kaimin
Advertisers

Whilt, James W., Eureka, Montana.....	Fr.	1,2
White, Leonard, Missoula, Montana.....	So.	1,2,3
Whitesitt, Donald, Stevensville, Montana.....	So.	1,2,3
Wilcox, A. Warren, Missoula, Montana.....	Jr.	1,2,3
Wilkie, Stephen C., Rosebud, Montana.....	Jr.	1,2,3
Williams, Dick, Missoula, Montana.....	So.	1,2,3
Winters, Bruce, Bonner, Montana.....	So.	1
Young, Merlin, Somers, Montana.....	Fr.	1,2
Youngquist, Oswald, Missoula, Montana.....	Fr.	1,2,3
Zadra, Jim, Missoula, Montana.....	So.	1, 3
Zemke, Hubert, Missoula, Montana.....	So.	1,2,3



Grand Canyon

By J. MAYNOR BREEN

I stood and gazed into its magic depths,
And was bereft of all sensations, old or new
By the vastness and the beauty of the sight;
No word I'd choose could picture it to you.

Like a microbe staring at a mural painting
I stood and looked, forgetting I'd been born,
'Till darkness blotted out the panorama;
Sealed it deep and dark and silent, until dawn.



MARSHFIELD and ROSE CITY HAND-MADE LOGGERS

Sold Exclusively by

C. R. DRAGSTEDT CO.

MISSOULA, MONTANA

Marshfield — The Best Made Logger at Any Price

Rose City — The Best Made Logger at The Price

Ask Any "Jack" From the Coast

DRAGSTEDT'S OUTDOOR CLOTHES and
FURNISHINGS HAVE STOOD THE TEST OF TIME

WHITE LOGGERS

8" Otto White	\$12.75
10" Otto White	13.75
8" White	10.75

MARSHFIELD LOGGERS

8" Marshfield	\$12.75
10" Marshfield	13.75

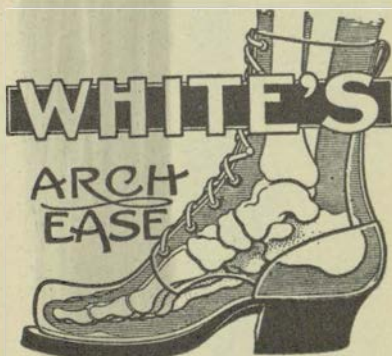
ROSE CITY LOGGERS

8" Rose City	\$10.75
10" Rose City	11.75

JEFFERSON DRIVERS

8" Jefferson Drivers	\$ 8.75
----------------------------	---------

Calking, \$1.00 Extra; Hobbing, 50c Extra



FILSON WATER REPELLANT CLOTHES

CRUISER, Double Back, Front and Sleeves.....	\$5.75
CRUISER, Double Back, Single Front and Sleeves.....	4.75
FIELD VEST, with Sleeves.....	3.50
FIELD VEST, without Sleeves.....	3.00
PANTS, Heavy Double Thickness.....	4.75
PANTS, Heavy Single Thickness.....	3.95

SLEEPING BAGS



Showing Bag
Rolled and
Tied



COMPLETE LINE
BUTTON and ZIPPER
STYLES

\$8.50 - \$13.50
\$15.00

MAIL US
YOUR
ORDERS

C.R. DRAGSTEDT
MEN'S WEAR
Quality Merchandise at Lower Prices

MISSOULA, MONTANA

WE PAY
THE
POSTAGE

OUTDOOR CLOTHES

For the OUTDOOR MAN

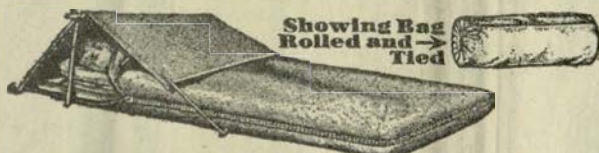


Filson Duck Coat, double back, front and sleeves	\$5.75
Filson Duck Coat, single sleeves, front, but has double back.....	4.75
Filson Field Vest, duck, with sleeves...	3.50
Same Vest, no sleeves.....	3.00
Filson Duck Pant, double.....	4.75
Heavy Duck Pant, Hirsch Weiss or Boss of Road.....	4.50
Filson Duck Pant, single.....	4.00

SHOES

8-in. Bergmann, light weight.....	\$13.95
8-in. Bergmann, medium weight....	13.95
10-in. Bergmann, either weight.....	15.50
8-in. Currin, either weight.....	13.95
10-in. Currin, either weight.....	15.50
8-in. Jefferson, sewed	10.00
8-in. Jefferson, pegged	10.00
8-in. Olympic	11.75
6-in. Olympic	8.95

CALKING, \$1.00 EXTRA
HOBBLING, 75c EXTRA



**Showing Bag
Rolled and
Tied**

Sleeping Bags, wool filled, size 36x84, zipper half way down one side, khaki duck covered.....	\$11.85
Same bag as above, zipper all way around.....	13.85
Same bag, size 40x84, zipper half way.....	13.50

Send for our
new catalog,
just out.



Send for measure-
ment blank for
shoes made
to order.

Missoula, Montana