



Cushing  
Terrell

**Stockman Bank Downtown Missoula****LEED BD+C: Core and Shell (v4)****PLATINUM, AWARDED SEP 2019****SUSTAINABLE SITES**

AWARDED: 6 / 11

Prereq	Construction activity pollution prevention	0 / 0
Credit	Site assessment	1 / 1
Credit	Site development - protect or restore habitat	1 / 2
Credit	Open space	0 / 1
Credit	Rainwater Mgmt	3 / 3
Credit	Heat island reduction	0 / 2
Credit	Light pollution reduction	0 / 1
Credit	Tenant design and construction guidelines	1 / 1

**WATER EFFICIENCY**

AWARDED: 11 / 11

Prereq	Outdoor water use reduction	0 / 0
Prereq	Indoor water use reduction	0 / 0
Prereq	Building-level water metering	0 / 0
Credit	Cooling tower water use	2 / 2
Credit	Water metering	1 / 1
Credit	Outdoor water use reduction	2 / 2
Credit	Indoor water use reduction	6 / 6

**ENERGY & ATMOSPHERE**

AWARDED: 32 / 33

Prereq	Fundamental commissioning and verification	0 / 0
Prereq	Minimum energy performance	0 / 0
Prereq	Building-level energy metering	0 / 0
Prereq	Fundamental refrigerant Mgmt	0 / 0
Credit	Enhanced commissioning	6 / 6
Credit	Advanced energy metering	1 / 1
Credit	Demand response	1 / 2
Credit	Renewable energy production	3 / 3
Credit	Enhanced refrigerant Mgmt	1 / 1
Credit	Green power and carbon offsets	2 / 2
Credit	Optimize energy performance	18 / 18

**MATERIAL & RESOURCES**

AWARDED: 7 / 14

Prereq	Storage and collection of recyclables	0 / 0
Prereq	Construction and demolition waste Mgmt planning	0 / 0
Credit	Building life-cycle impact reduction	3 / 6

**MATERIAL & RESOURCES**

CONTINUED

Credit	Building product disclosure and optimization - environmental product d...	1 / 2
Credit	Building product disclosure and optimization - sourcing of raw materia...	0 / 2
Credit	Building product disclosure and optimization - material ingredients	1 / 2
Credit	Construction and demolition waste Mgmt	2 / 2

**INDOOR ENVIRONMENTAL QUALITY**

AWARDED: 3 / 10

Prereq	Minimum IAQ performance	0 / 0
Prereq	Environmental tobacco smoke control	0 / 0
Credit	Enhanced IAQ strategies	1 / 2
Credit	Low-emitting materials	0 / 3
Credit	Construction IAQ Mgmt plan	1 / 1
Credit	Daylight	0 / 3
Credit	Quality views	1 / 1

**REGIONAL PRIORITY CREDITS**

AWARDED: 4 / 4

Credit	Renewable energy production	1 / 1
Credit	Optimize energy performance	1 / 1
Credit	High priority site	1 / 1
Credit	Surrounding density and diverse uses	1 / 1
Credit	Site development - protect or restore habitat	0 / 1
Credit	Indoor water use reduction	0 / 1

**LOCATION & TRANSPORTATION**

AWARDED: 16 / 18

Credit	LEED for Neighborhood Development location	0 / 20
Credit	Sensitive land protection	2 / 2
Credit	High priority site	2 / 3
Credit	Surrounding density and diverse uses	6 / 6
Credit	Access to quality transit	4 / 6
Credit	Bicycle facilities	1 / 1
Credit	Reduced parking footprint	0 / 1
Credit	Green vehicles	1 / 1

**INTEGRATIVE PROCESS CREDITS**

AWARDED: 1 / 1

Credit	Integrative process	1 / 1
--------	---------------------	-------

**TOTAL** 85 / 110

40-49 Points CERTIFIED	50-59 Points SILVER	60-79 Points GOLD	80+ Points PLATINUM
---------------------------	------------------------	----------------------	------------------------

Recently awarded LEED v4 Building Design and Construction: Core + Shell Platinum Certification.

85 credits obtained

80+ credits required



**Cushing  
Terrell**





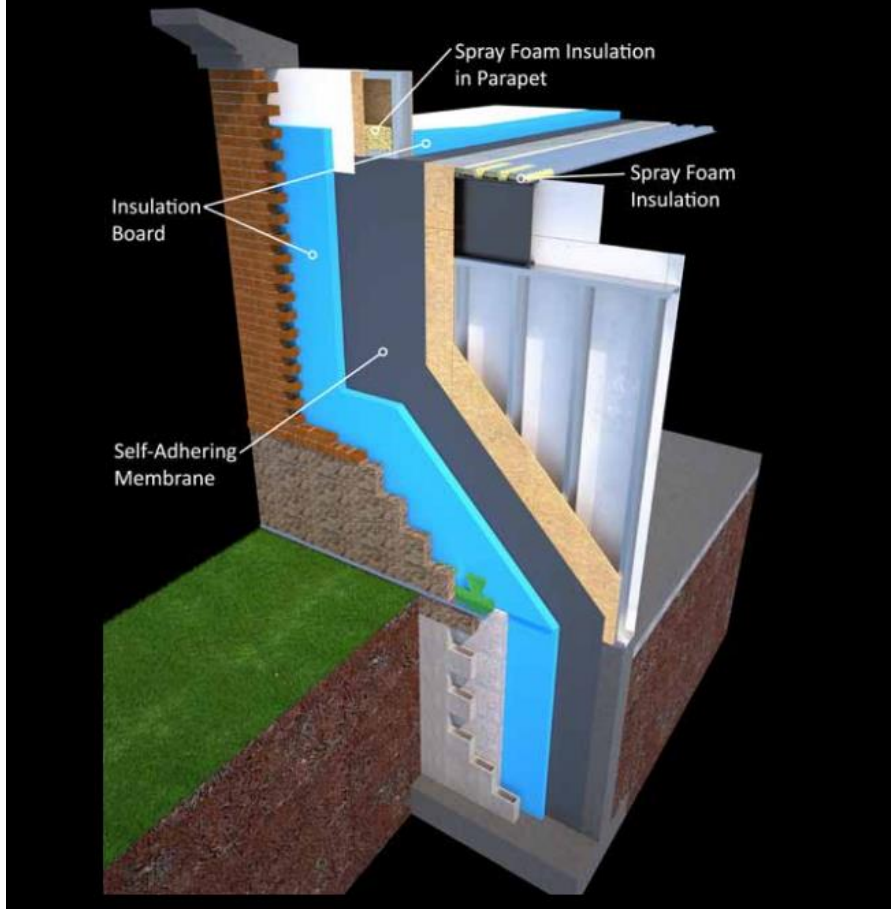
**Exterior Envelope Construction**



**Cushing  
Terrell**



# CONTINUOUS AIR BARRIERS



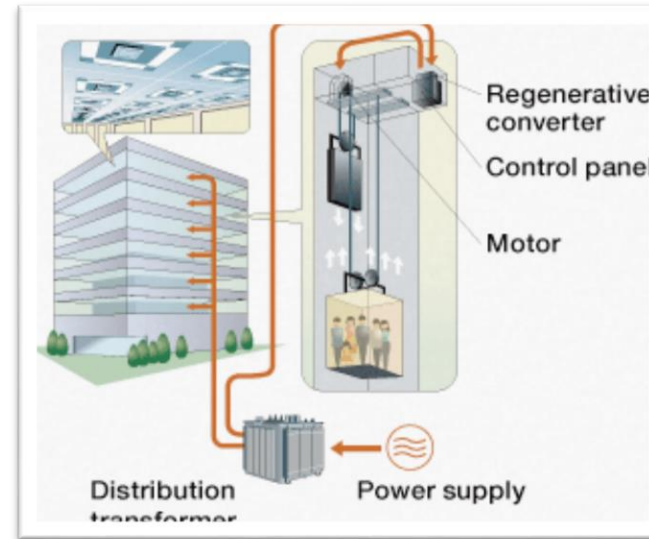
Exterior Envelope Construction



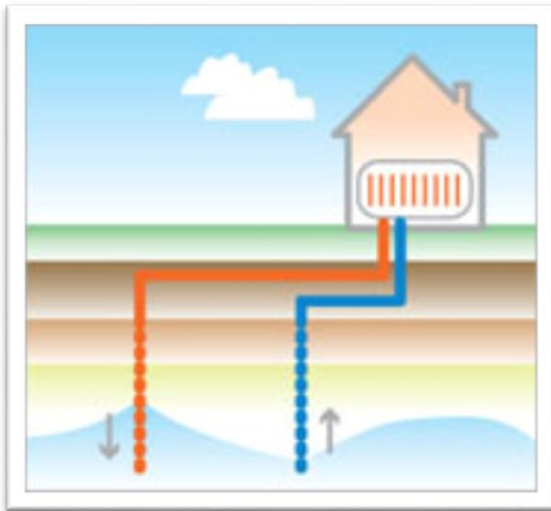
Cushing  
Terrell



Chilled Beams



Elevator Brake System



Heating & Cooling System



LED lighting

**Energy Efficient Design**



**Cushing  
Terrell**





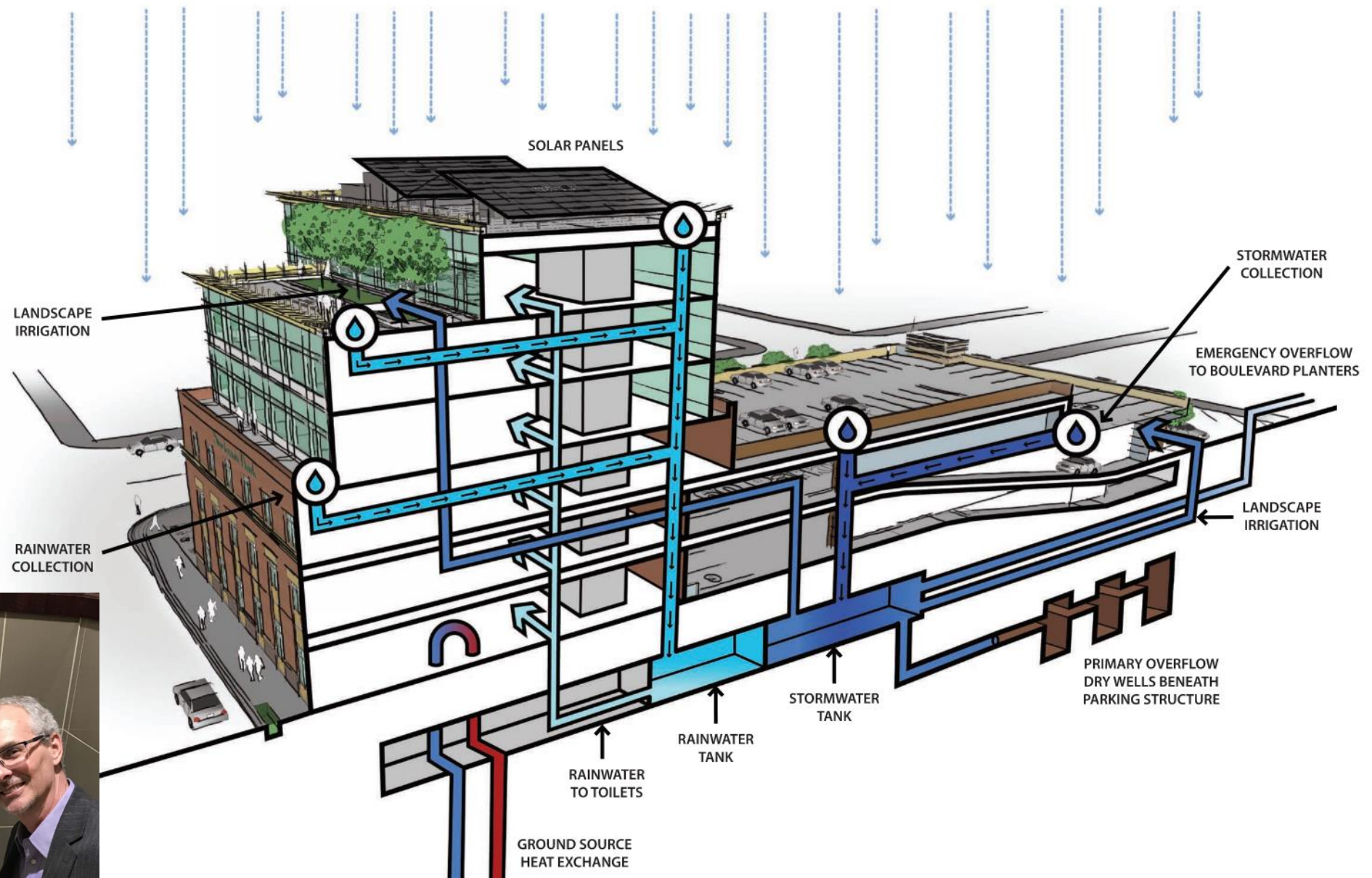
Roof Garden

**Energy Efficient Design**



**Cushing  
Terrell**





Rainwater Harvesting

Energy Efficient Design



Cushing  
Terrell





Daylight & Views



Life Cycle Cost



Energy Efficient Design



Cushing  
Terrell





Thank You



Cushing  
Terrell