



HARRY ADAMS
Head Track Coach



EDWARD CHINSKE
Head Golf Coach



FORREST COX
Head Basketball Coach



ROBERT ZIMNY
Head Tennis Coach
Assistant Football Coach



GEORGE DAHLBERG
Director of Athletics

athletic staff trains teams

NASEBY RHINEHART
Athletic Trainer

HAROLD SHERBECK
Head Baseball Coach
Freshman Football
and Basketball Coach

JERRY WILLIAMS
Head Football Coach

LAURIE NIEMI
Assistant Football Coach





varsity football team . . .

FRONT ROW: Mike O'Brien, Will Hochhalter, Don Williamson, Bob McGihon (Co-captain), Bob Small, Montana Eockman, Ken Gue (Manager).

SECOND ROW: Chuck McKelvie, Dick Dzivi, Bob Everson, Vern Tenant, Gary Kennedy, Carl Yeckel, Carl O'Loughlin (Equipment Manager).

THIRD ROW: Lou Pangle, Paul Enochson, Duane Carver, Roy Bray, Bill Hand, Karl Benjamin, John Dixon, Naseby Rhinehart (Athletic Trainer).

FOURTH ROW: Jerry Connors, Terry Hurley, Chuck Moore, Matt Gorsich, Mark Dasinger, Stan Renning, Pat Monno, George "Jiggs" Dahlberg (Director of Athletics), Bob Zimny (Assistant Coach).

BACK ROW: Severn Hayes, Pete Rhinehart, Will Hart, Ervin Rosera, Bob Butorovich, Ivory Jones, Laurie Niemi (Assistant Coach), Harold Sherbeck (Freshman Coach), Jerry Williams (Head Coach).

NOT PICTURED: Bill Kaiserman (Co-captain).



Big KARL BENJAMIN junior tackle 232 pounds ex-serviceman transfer from Washington State College.



MONTANA BOCKMAN guard sophomore hometown boy from Missoula good prospect despite his small frame.



ROY BRAY junior quarterback Missoula boy rugged defensive player showed improvement.



BOB BUTOROVICH sophomore tackle biggest man on the team at 245 practiced diligently on place-kicking.



DUANE CARVER junior guard one of the pleasant surprises of the gridiron season from Seattle, Wash.



JERRY CONNORS pint-sized sophomore halfback proved to be an elusive runner despite his small 150-pound frame.



Smiling **JOHN DIXON** sophomore guard one of the youngest men on the squad will be heard from in the future.



DICK DZIVI junior center received honorable mention on a pre-season academic All-American team.



Adept ball-handler **PAUL ENOCHSON** senior quarterback won his third letter as a Grizzly.



BOB EVERSON sophomore back from Washington spelled off backfield men regularly good prospect for the future.



Sophomore **MATT GORSICH** halfback drew raves about his play top prospect for next year.



BILL HAND junior tackle transfer from Yakima Junior College fast for his size.



Personable **WILL HART** . . . added strength to the end post during his senior year.



"Ironman" **SEVERN HAYES** . . . junior fullback . . . fast, hard runner . . . gained 415 yards with an average of 5.4 yards per carry . . . honorable mention on the Skyline All-Star team.



Junior end **TERRY HURLEY** . . . received honorable mention on the Skyline All-Star team for his pass catching and fine play . . . married Miss Montana of 1956.



IVORY JONES . . . sociology major . . . senior tackle . . . fastest lineman on the team . . . was almost lost to army during the season.



Co-captain **BILL KAISERMAN** . . . senior halfback . . . forced to hang up his spikes during the season due to a severe back injury.



GARY KENNEDY . . . sophomore tackle . . . gained some needed experience . . . will be heard from next year.



BOB MCGIHON . . . co-captain . . . senior tackle . . . often rattled the teeth of opponents by bone-crushing tackles . . . oldest man on the squad at 29.



CHUCK McKELVIE . . . junior . . . quarterback . . . startled opponents at times with his sharp passes.



PAT MONNO . . . sophomore halfback . . . fast . . . fourth-leading ground gainer on the squad . . . a top scorer.



CHARLEY MOORE . . . sophomore center . . . ex-serviceman . . . formerly an all-around athlete from Deer Lodge.



Sophomore **MIKE O'BRIEN** . . . center . . . rugged linebacker from Spokane . . . shined at times.



LOU PANGLE . . . junior end . . . steady offensive and defensive standout . . . sticky-fingered pass-catcher.



STAN RENNING . . . sophomore guard . . . one of the top grid prospects in MSU history . . . the top sophomore in the Skyline this year . . . an All-American candidate next season.



PETE RHINEHART . . . junior end . . . steady offensive and defensive stand-out . . . an excellent pass receiver.



ERVIN ROSERA . . . "The Tank" . . . junior fullback . . . bone-crushing runner . . . reeled off 356 yards by rushing . . . a top scorer.



BOB SMALL . . . senior guard . . . looked good on defense at various times, often smashing ball carriers with hard tackles.



VERN TENNANT . . . sophomore guard . . . willingly made the change from the backfield to the guard position.

freshmen squad



DON "Punk" Williamson . . . junior halfback . . . fast . . . was sorely missed when out of action with a knee injury for part of the season.

FRONT ROW: Joe Pepe, Bill Edinger, Tom Welch, Ken Wersland, Edmund Buzzetti, Bert Deglow, Paul Gyles.

SECOND ROW: Bruce Olson, Charles Martin, Bill Mathews, Jim Baker, Dick Hale, Phil Griffin, Dick Gaffney.

THIRD ROW: Ed Bilan, John Templeton, Tony Antonucci, Gary Douglas, Gerald Beller, Howard Blachly.

TOP ROW: Harold Sherbeck—Coach, Tim Grattan, Larry Sampson, Russ Grant.





the treasure state band . . .

Vitalizer of football games and parades . . . majorettes wear buckskin, feather and bead costumes . . . football halftime performances and formations entertain many . . .

MAJORETTES: Lois Detonancour, Christine Fairbanks, Jo Haines, Paula Heidelman, Linda Johnson, Laura MacKenzie, Mary Jo McBride, Mary Jean Schilling, Mary Ann Whaley, Gail Hagen, Beverly Stordock, Elaine Barrett.

BAND MEMBERS: L. Arthun, R. Bacon, G. Barrick, B. Bednorz, C. Eoyden, W. Bucci, J. Bullchild, N. Burke, G. Connolly, L. Copley, R. DeVries, C. Dix, M. Enebo, A. Erickson, M. Fornall, J. Fuggett, R. Cray, E. Hackett, L. Halvorson, C. Hopperstad, R. Jackson, A. Jacobson, L. Johnson, P. Jos-

lin, L. Juhnke, F. Kenney, G. Kinsley, M. Knoyle, J. Knuckey, W. Korizek, K. Kuno, P. Kuno, D. Lawrence, R. Matsuoka, L. McDonald, D. McLaughlin, J. Mellinger, M. Mertzig, S. Morrow, N. Nelson, S. Newton, M. Niblack, L. Olness, M. Osher, B. Parker, C. Peters, L. Peterson, C. Peterson, K. Quist, V. Romano, J. Sanderson, F. Tetrault, R. Thornton, M. Towell, M. Vance, J. Varnum, J. Watson, D. Weinberg, I. Welch, M. Whaley, G. Hagen, D. Jennings, L. Rundle, B. Stordock, G. Hurd, D. Kemmerer, J. Forvilley, R. Duff, C. Hamor, R. Bork.

JAMES EVERSOLE, director

BRUCE PATRICK, assistant

JERRY SCHREUDER, drum major

MARLENE KOLSTAD, head majorette



cheerleaders and pom-pom girls . . .

Leaders of school spirit at football and basketball games . . .

POM-POM GIRLS: Frannie Ferlan, Shirley Trana, Marilyn Dickson, Ruth Wenholz, Ardith Hamilton, Greta Peterson (leader), Lee Ryan, Sue Marx, Freda Stegmuller, Mary Ann Arras.

CHEERLEADERS: Ardice Sayre, Polly Hodges, Jan Tustison, Dick Riddle (cheer-king), Jeri Whitten, Cara Boggess, Jeri Miller, Sharon Nelson.

kams and dregs . . .

Entertained at games in costumes . . . supposed to boost school spirit . . . responsible for mickey mouse hands on Main Hall clock . . . members tapped during their junior and senior years.

FRONT ROW: Tom Lawin, Helen Harlan, Liz Astle, Roxie Perrior, Sheila McDorney, Marcia Smith, Fred Weldon.

MIDDLE ROW: Pat Fox, Janece Welton, Bill Williamson, Mary Lightfoot, Dick Riddle, Bob Palin, Stan Nicholson.

BACK ROW: Lanny Kenney, Tom Fleming, Thea Williams, Shirley Underwood, Roberta Dixon, Cara Boggess, Pat Harstad, Liz Fahrner, Sharon Tri, Chris Fairbanks, Joan Griffin, George Lambros.

CO-PRESIDENTS: Ike Kaufman, Shirley Underwood.



men's "m" club . . .

Lettermen in any sport recognized by the Skyline Conference as a varsity sport . . . sponsored M Club fights . . . sold lilies for crippled children . . . ushered . . . publicity for ballet.

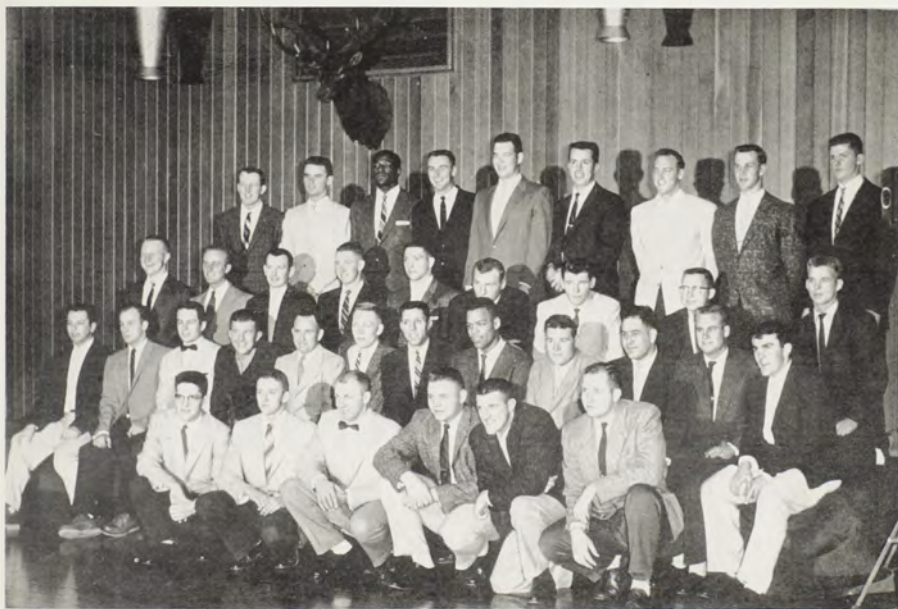
FRONT ROW: Al Day, Paul Nordstrom, Hank Mohland, Jim Black, Walt Jones, Harold Wallace.

SECOND ROW: Joe Aboaf, Tom Ritter, Ken Cardwell, Lou Pangle, John Boyle, Hal Erickson, Ray Howard, John Dixon, Bill Hand, Karl Benjamin, Charles McKelvie, Michael O'Brien.

THIRD ROW: Roland Stoleson, Lynn Colvert, Bill Redmond, Jerry Daley, Pat Monno, Stan Renning, Bob Everson, Ken Gue, Forrest Liebe.

FOURTH ROW: Jim Lee, Paul Sullivan, Ivory Jones, Tom Jensen, Gary Kennedy, Bob Small, Tom Roe, Matt Gorsich, Larry Schulz.

President
Ray Howard
Vice-President
John Boyle
Secretary
Hal Erickson
Treasurer
Lou Pangle





varsity basketball . . .

FRONT ROW: Gordon Hunt, Jim Powell, Rudy (Zip) Rhoades, Hal Erickson, Tom McEacheron.

SECOND ROW: Clancy Waters, Forrest Cox, Jr., Ray Howard, Duane Divich, Al Dunham.

THIRD ROW: Jack Dunlap, Mike Granbois, Dick Trinstich, Darroll Dunham, Russ Sheriff.

BACK ROW: Larry Holmes (Manager), Forrest Cox (coach), Hal Sherbeck (Freshman Coach).

winningest team shoots for third



FROSTY COX, JR. . . . junior . . . guard . . . improved by leaps and bounds . . . impressed fans with his hustling . . . gained valuable experience this season . . . became a fine defensive performer.



AL DUNHAM . . . forward . . . senior . . . 6-5 and 190 pounds . . . All-Skyline honorable mention . . . rebounder . . . hook-shot expert . . . dead-eye from the free throw line . . . holds several free throw records.



Steady HAL ERICKSON . . . performed admirably at the guard position . . . junior . . . excelled on defense . . . his stellar playing was greatly missed in the last four games of the season after he received a broken nose.



RAY HOWARD . . . 6-6 senior . . . his 40.4 field goal percentage was tops for the squad . . . always sparked the team whenever he was needed despite the handicap of two extremely painful knees.

lettermen hoopsters



JIM POWELL . . . 6-3 . . . one of the most outstanding sophomores in the conference . . . in his first assignment he scored 15 points and grabbed 18 rebounds as MSU upset BYU 71-63 . . . fine all-around player.



Flashy RUDY (Zip) RHOADES often entertained spectators with his antics . . . guard on All-Skyline first team . . . senior . . . led the Silvertips in scoring with a 14.4 average per game . . . excellent passer . . . fine ability to maneuver on the dribble.



Big RUSS SHERIFF . . . 6-7 junior . . . center on All-Skyline second team . . . one of league's top rebounders . . . scored on 39.6 per cent of his field goal attempts . . . performed like an All-American in MSU's 60-48 victory over Utah, last year's champs.



CLANCY WATERS . . . junior guard . . . All-Skyline honorable mention . . . dazzled crowds with his jump shot from far out . . . one of the most feared shooters in the league . . . former junior college All-American nominee.

msu skiers become varsity athletes

First year in the athletic department for the ski team . . . financed largely by students' money . . . built ski jump on Diamond Mountain and cross-country course in Pattee Canyon.

. . . participated in 4 intercollegiate ski meets and 6 other meets of the Northern Rocky Mountain Ski Association . . . took part in jumping, cross-country, downhill, slalom, and giant slalom events.

At the National Nordic Combined Ski Meet at Walla Walla, Wash., Don Eberle took first place honors and Marion Betts placed second in the class B cross-country race.

John Wordal and Don Eberle competed in the NCAA National Ski meet at Ogden, Utah.

Outstanding freshman: Rudy Ruana.

lettermen

Marion Betts
Don Eberle
Roger Lund
Allan Morris
John Wordal

SITTING: Lee Robinson, Al Morris, John Wordal.

STANDING: Lou Buckmaster, Gerald Calbaum, Art Nordling, Marion Betts, Don Eberle, Roger Lund, Rudy Ruana.





swimming team . . .

FRONT ROW: Bob Williamson, Allan Day, Barron Putnam, Leland Felix, Ken Cardwell, John Rider.

SECOND ROW: Harold "Bud" Wallace (Coach), Walter Jones (Captain), Ed Filler, Paul Nordstrom, Jerry Parker, Cole MacPherson, John Stipe.

BACK ROW: Tom Ritter, Joe Aboaf, John Plunkett, Ken Travis, Mike Chapman, Mason Niblack, Jim Crow.

skyline aquatic competitors

lettermen

Ken Cardwell
Allan Day
Walter Jones
Cole MacPherson
Paul Nordstrom
John Rider
Tom Ritter
John Stipe
Ken Travis
Joe Aboaf
Harold Wallace

season summary . . .

DATE	OPPONENT	SCORE Mont. Opp.	WHERE
Jan. 18	Idaho State	59 27	Pocatello, Idaho
25	University of Idaho	27 65	Moscow, Idaho
26	Washington State College	45 38	Pullman, Wash.
Feb. 9	Wyoming University	15 71	Missoula
Feb. 16-17	SKYLINE WESTERN DIVISION MEET at Logan, Utah		

Total Points

1. Utah U.	96
2. Montana	60
3. Utah State	24

March 7, 8, 9 SKYLINE CONFERENCE MEET at Brigham City, Utah

Total Points

1. Denver U.	142
2. Wyoming U.	100
3. Utah U.	56
4. Colorado A&M	44
5. Montana	23
6. Utah State	9



varsity rifle team . . .

FRONT ROW: Allan Hedman, Richard J. Anderson, John Donahue, Don Nelson.
 SECOND ROW: Bill Cahill, Wilson L. Managhan, Frank Tetrault, John Foster.
 BACK ROW: Q. L. Carpenter (Coach), Larry David, Gustave F. Peterson, Jerry
 Everard, Phil Shelton.

rifle teamsters score high

MSU won first place in team events at the Intermountain Invitational Meet in Logan, Utah on April 26-27. Larry David and Frank Tetrault accumulated the highest and second highest individual scores of the meet.

At the Sectional National Rifle Association Small Bore Matches at Corvallis, Oregon, on April 13, Tetrault had the highest individual total, and David ranked second.

John Foster was placed on the Second All-American Intercollegiate Rifle Team. He also received the Mercantile trophy, which is awarded annually to the highest firer.

Larry David had the third highest total of all college firers during the intercollegiate matches. Frank Tetrault was fifth among all ROTC students in the matches.

Allan Hedman received a medal for being the most improved rifleman.

Minor Lettermen

Dick Anderson
 Bill Cahill
 Larry David
 John Foster
 Allan Hedman
 Riley Hunton
 Dick Lukes
 Mike Hodge
 Gustave Peterson
 Phil Shelton
 Frank Tetrault

tennis team of one . . .

AET HOFFER . . . pictured at right . . . junior . . . the only letterman in tennis . . . represented Montana State University in the Skyline Conference tennis meet at Fort Collins, Colorado . . . lost a close match in singles play to Jack Kennedy of New Mexico, who won the singles tournament . . . gave Kennedy a closer battle than anyone else who faced him.



BOB ARRAS



JOHN BOYLE



LeROY PETERSON

**golf
team
whips
msc**

season data . . .

DATE	OPPONENT	SCORE		WHERE PLAYED
		Mont.	Opp.	
April 13	Montana State College	13	5	Missoula
19	Utah State	8½	9½	Logan, Utah
20	Utah U.	9½	13½	Salt Lake City, Utah
22	Brigham Young U.	4½	13½	Provo, Utah
27	Brigham Young U.	2	16	Missoula
May 3	Utah State	9	9	Missoula
10	Utah U.	3½	14½	Missoula
24	Montana State College	10	8	Eozeman, Mont.

SEASON'S TOTAL: Won 2, lost 5, tied 1.

Lettermen

Joe Boboth
John Boyle
Don Casagrande
LeRoy Peterson
Dick Bundhund
Bob Arras



varsity baseball team . . .

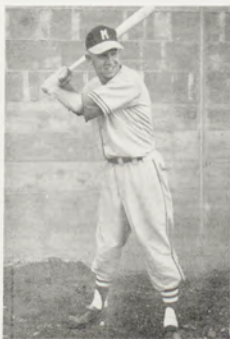
FRONT ROW: Charles Moore, Lynn Colvert (Captain), Jerry Daley, Gordon Hunt, Don Williamson, Don Johnson.

SECOND ROW: Bruce Montgomery, Glen McGivney, Bill Redmond, Doug LeBrun, Ron Rundle, Manfred Haiges.

BACK ROW: Harold Sherbeck (Coach), Roland Stole-son, Charles Bennett, George Knapp, John Stevenson, Donald Robirds, Larry Schulz.

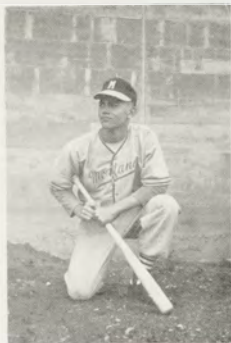
JERRY DALEY
shortstop . . . junior . . .
one of the best all-around
performers . . . his .329
batting average was tops
for the regulars . . . led
in total hits.

**Junior ROLAND STOLE-
SON** good hitting
pitcher . . . beat Utah U.
twice . . . 3-2 won-lost
record . . . majoring in
forestry.

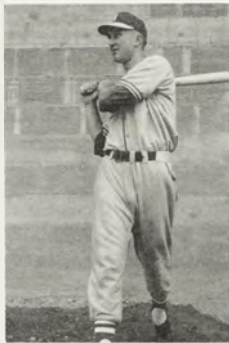




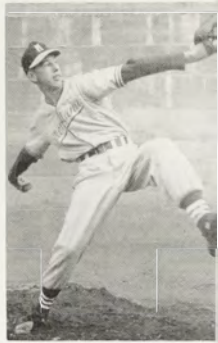
BRUCE MONTGOMERY sophomore pitcher hampered by sore arm during much of season from California.



GORDON HUNT outfielder junior strong arm fast runner hit .308 a hometown Missoula boy excellent prospect.



RON RUNDLE senior forester outfielder long-ball hitter hit .300 hails from Chicago.

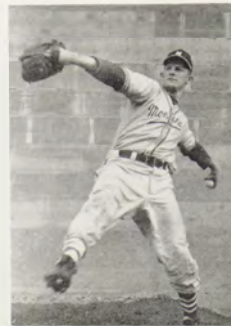


DOUG LeBRUN pitcher junior good control showed improvement 3.46 ERA.

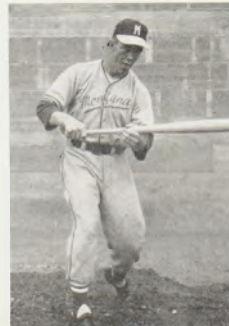
diamond players . . .



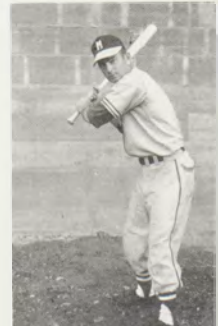
CHARLES MOORE sophomore fast-balling pitcher good base coach the work-horse of the staff led in innings pitched.



LARRY SCHULZ junior pitcher and first baseman missed some action due to thumb injury top ERA on the squad.



DON "PUNKIE" WILLIAMSON junior Butte boy speedy outfielder led team in stolen bases and fielding percentage.



BILL REDMOND junior good utility man one of the best clutch hitters on the team played wherever needed.



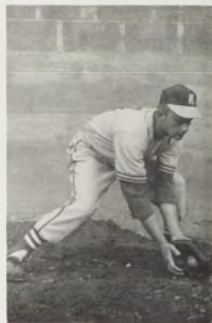
Youthful CHARLES BENNETT sophomore catcher long-ball hitter led team in home runs hit .298.



GLEN McGIVNEY sophomore reserve catcher played infrequently hit .750 hustler.



MANIFRED HAIGES sophomore catcher played when needed.

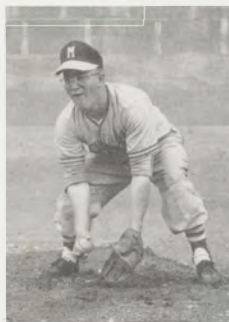


LYNN COLVERT junior second baseman captain hampered by leg injury led in runs scored, triples, and runs batted in.

DUANE ANDERSON sophomore reserve infielder steady fielder good arm hit .333 in 5 games.

FRONK KOCSIS senior outfielder long-ball hitter speedy runner led team in bases on balls.

HERB WHITE senior first baseman good man injured early in the season.



DON JOHNSON junior third baseman the team "jokester" covered lots of territory around third base.

DON ROBIRDS sophomore reserve infielder good future prospect hustled all year.

Hard-working GEORGE KNAPP sophomore outfielder native of New York played in only one game.

JOHN STEVENSON junior reserve outfielder hit .333.



varsity track team . . .

SITTING: Ken Nelson, Ray Merwin, Bill Anderson, Ted Nyquest, John Bryant.

KNEELING: Ron Lundquist, Ron Paige, Bill Beaulieu, Jim Rowland (Co-Captain), Art DeVries, Dick Lindsay, Paul Sullivan.

STANDING: Mike Granbois, Jim Black (Co-Captain), Ken Wersland, Tom Roe, Hank Mohland, Naseby (Pete) Rhinehart, Harry Adams (Coach).

NOT PICTURED: Jerry Lanz, Ed Shepherd, Russ Sheriff.

CO-CAPTAINS Jim Black and Jim Rowland.

track and turf fellows





Above is the relay team which ran the fastest all-time relay race for Montana . . . the time of 3:16.4 in the Skyline Conference trackmeet broke the former mark of 3:16.8, which was set in 1939 . . . the members (from l. to r.) are:

MIKE GRANBOIS . . . freshman . . . also ran the 440 . . . from Poplar.

PAUL SULLIVAN . . . junior . . . native of Anaconda . . . ran the 440, too.

JIM ROWLAND . . . senior . . . ran the 440 . . . honor student in physics.

RAY MERWIN . . . freshman . . . ran the 880 and the 440 . . . ran the 440 in :48.3.

lettermen not pictured . . .

JERRY LANZ . . . sophomore . . . pole vault . . . his 13 ft. 1 in. was good for third place in the pole vault event of the conference meet.

ED SHEPHERD . . . sophomore . . . high jump . . . his top leap was 6 ft. 3 in.

Respectacled **RUSS SHERIFF** . . . junior . . . discus . . . has thrown farther than 156 ft.



RON LUNDQUIST (top)
senior best javelin tosser in
school's history has thrown up to
214 ft. 7 in.

BILL BEAULIEU junior low
hurdles and broad jump tallied
the most points in the AAU meet
fourth in broad jump in conference
meet.



Big JIM BLACK senior shotput
. . . . hindered by an ankle injury has
thrown the shot 50 ft. 3 1/4 in.



KEN WERSLAND (lower right)
freshman shotput and discus
threw the shot 46 ft. 8 in. and the discus
148 ft.



TOM ROE . . . senior . . . high jump . . . has soared up as far as 7ft. 5 in. . . . earned 4 track letters in his college career.

NASEBY (Pete) RHINEHART . . . junior . . . low hurdles won low hurdles event in the AAU meet.



DICK LINDSAY . . . senior . . . hurdles . . . won the high hurdles race in the conference trackmeet . . . ran the high hurdles in :13.9 at NCAA national trackmeet last year.



HANK MOHLAND . . . sophomore . . . ran high hurdles in :14.2 . . . the lone Montana representative at the NCAA national trackmeet this year.





RON PAIGE . . . junior . . .
100 and 220 . . . from Philips-
burg.



KEN NELSON . . . sophomore
. . . 100 and 220 and broad
jump . . . a consistent point-
getter . . . former Interschol-
astic star.

Freshman **ART DeVRIES** . . .
mile and two-mile . . . good
future prospect.



BILL ANDERSON . . . fresh-
man . . . half-mile . . . set
a new Montana State U. record
in the half-mile race.



Quiet **TED NYQUEST** . . .
senior . . . miler from Eoulder
. . . ran the mile in :4.25 . . .
fourth in the mile run in the
conference meet.



competitive sports

men's intramural . . .

BASKETBALL

1. Nesters
2. Sigma Nu

SOFTBALL

1. Straps
2. Alpha Tau Omega

GOLF

(individual)

1. D. Bundhund 83
2. D. Bork 84

(team)

1. Sigma Chi 285
2. Choke-ups 295

PING PONG

(singles)

1. Hjellum
2. Nyquest

HORSESHOES

(doubles)

1. Simon and Frazer

SKIING

(team)

1. Sigma Nu
2. Sigma Chi

(individual)

Fastest Time—Bill Lotten: 53.7 sec.

TENNIS

(singles)

1. Paul Weingart
2. Newt Simmons

FOOTBALL

1. Fi Alpha Falfa

VOLLEYBALL

1. Fort Falcons

for the rest of us . . .

women's intramural . . .

BASKETBALL	Turner Hall
BOWLING	Delta Delta Delta
VOLLEYBALL	Corbin Hall
SKIING	Kappa Alpha Theta
SWIMMING	Alpha Phi
SOFTBALL	Unfinished
BADMINTON	
(singles)	Jean Comte
(doubles)	Barbara Wood and Jean Comte