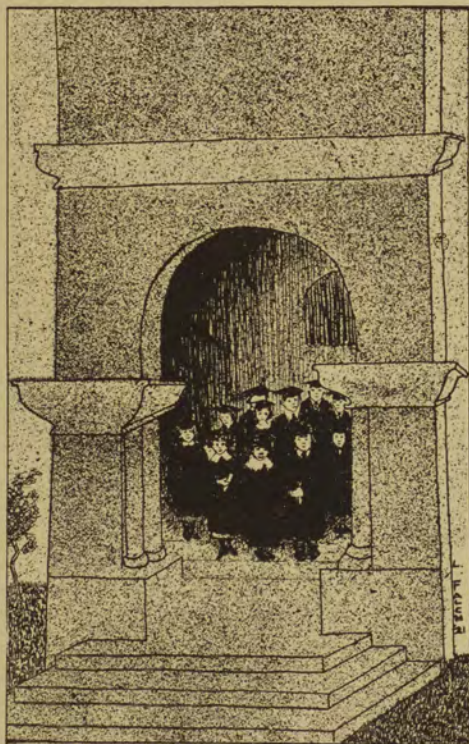




CLASSES





SENIORS



Officers



Harry Adams

Ruth Jarl

James Harris

Hans Hansch





CONSTANCE KEITH — B.A.
Modern Language, Kappa
Kappa Gamma, Penetralla,
Chairman, Cercle Français
(1), Pan-Hellenic (3, 4), Pres.
Pan-Hellenic (4), Choral (4).

ELLSWORTH MOSBY — B.A.
Journalism, Iota Nu, Sigma
Delta Chi, All American Club,
Pres. Native Sons and Daughters
Club (4), American Legion,
Pressa Club, Silent Sen-
tinel, Sports Editor (2), Act-
ing Editor Kalmin (2), Dram-
matic Club (1), Student Asst.
Jour. (3), Military Depart-
ment (4).



HARRY ADAMS — B.A. Busi-
ness Ad. (1, 2, 3, 4), Track
(3, 4), Basketball (4), Iota
Nu, Alpha Kappa Psi, Silent
Sentinel, M. Club, Pres. M.
Club (4), Vice-Chairman Stu-
dent Council (4), Class Pres.
(4), Trowel Club, Vice-Pres.
Trowel (4), Aber Day Man-
ager (4), Student Assistant
Business Administration (4).

MARGARET TAYLOR — B.A.
English, Kappa Tau.



BERTHA REIS — B.A. Home
Economics, Alpha Phi Home
Ec. Club, Pres. Home Ec. (4),
Hi Jinx (4), May Pete (1, 2),
Western College (3).

JEAN PAUL FREEMAN —
Dartmouth (1), Michigan (2,
3), I.E.A. Law, Football (4),
M. Club, Pi Delta Alpha, Phi
Sigma Alpha.



ROSCOE JACKMAN — B.A.
Chemistry, Band (1, 2, 3, 4),
Director (3, 4), S. A. T. C.
Scholarship (2), Orchestra (1,
2, 3, 4), Chemistry Club, May
Pete Orchestra (1, 2, 3, 4),
Student Asst. (2, 3, 4).

LAURA D. MOORE — M.A. Eng-
lish, Kansas State College
B.A. Journalism, Theta Sigma
Phi, Phi Kappa Phi, Board of
Editors, Frontier.





FLORENCE HAYES—B.A.
English-Town Girls League,
Choral Club (3), Dramatics.

HAROLD FITZGERALD—B.A.
Business Ad., Football (3),
Phi Delta Theta, Alpha Kappa
Psi, Pres. A.K.P. (4), So-
cial Science Club Vice-Pres.
(4), Pres. Commercial Club
(4), Debate Squad (3).



MARY LAUX—B.A. Physical
Education, Kappa Alpha Theta,
Delta Psi Kappa, Kappa
Tau Penetralia, C.S.A., Let-
ter in Basketball, Baseball
and Track, Athletic Council.

GWENDOLINE KEENE—B.A.
Wellesley, M.A. Journalism,
Press Club, Frontier Staff,
Zeta Alpha.



HELEN A. LITTLE—B.A. Phy-
sical Education, Kappa Kappa
Gamma, Delta Psi Kappa,
Masquerade.

ANDY BOYD—A.B. in Busi-
ness Administration, Base-
ball (2), Phi Delta Theta,
Alpha Kappa Psi, "M" Club,
Social Science Club, Towel
Club, Pres. Press Club, Inter-
fraternity Council Pres. (4),
Vice-Pres. (2).



WALTER WILSON—B.A. Law,
Law Association.

PAULINE POWELL—B.A.
Home Economics, U. of Wis.
(1, 2), Montana State Col-
lege (3), Kappa Kappa
Gamma, Home Economics
Club, Choral Club.





MARGARET STENSON
WICKES—Bonner Piano
Medal (2), Y. W. C. A. Pres.
(2), Glee Club (1, 2, 3), Pen-
talia, Dramatics, Kappa Tau,
Orchestra (3, 4).

GEORGE SHEPARD—A.B. LL.
B. Law, Baseball (2, 3, 4),
Alpha Delta Alpha, Pi Delta
Alpha, A.S.U.M. Pres. (4),
Debate (3), Employment Sec.
(3, 4).



CORA SPARROW—B.A. Physi-
cal Education, Delta Psi Kap-
pa, Y. W. C. A., May Fete
(4), Mont. State College (2),
Public Exercise Committee
(4).

MARGARET P. FARRELL—
B.A. History, Delta Sigma
Chi, Social Science Club,
G.S.A.



H. H. NORVILLE—B.A. Math-
ematics, Math. Club, Trowel
Club.

LEONARD RAUTKE—B.S. For-
estry, Forestry Club, All-
American Club, Trowel Club,
Pres. All-American Club (4),
Editor Forestry Kalmin (4).










VERA KNOWLES—B.A. Jour-
nalism, Theta Sigma Phi, Kal-
min Staff (3).

DOROTHY MILLER—B.A.
Home Economics, Home Eco-
nomics Club (2, 3, 4), Glee
Club (2, 3, 4), Town Girls'
League (1).





 <p>HELEN STUART—B.A. Home Economics, Alpha Phi, Penetralla, Sec. and Treas. Home Economics Club (3, 4), Hi Jinx (1), May Fete (2, 3).</p>	 <p>BERYLE BURPENING—B.A. Physical Education, Montana State College (1), May Fete (1, 2, 3, 4), Y. W. C. A. Choral, P.E.P. Delta Psi Kappa, Kappa Kappa Gamma, Penetralla.</p>
 <p>MABEL KNUTSON—B.A. English, U. of N. Dak. (1, 2), Choral Society, Director "Abraham Lincoln."</p>	 <p>CLYDE BAKER—B.S. Forestry, Varsity Track (2, 3), Glee Club (3), Alpha Delta Alpha.</p>
 <p>PAUL W. SMITH—B.A. Law, Sigma Chi, Psi Delta Alpha, Trowel Club, Debate (3, 4).</p>	 <p>HELEN LITTLE—B.A. Physical Education, Kappa Alpha Theta, Theta Sigma Phi, Delta Psi Kappa, Penetralla, Press Club, Student Council (4), W.S.G.A. Ex. Board (3), Pres. W.S.G.A. (4), Kappa Staff (1, 2), Sentinel Staff (3), Pan-Hel Council (2, 3).</p>
 <p>OLIVE GNOSÉ—Ph.C. Pharmacy, Iota Phi Epsilon, Sec. Pharmacy Club (1), Pres. Pharmacy Club (3), Treas. Craig Hall (3).</p>	 <p>LEROY DE RYKE—B.A. Modern Languages.</p>





GRACE BARNETT—B.A. History, Kappa Kappa Gamma, Kappa Tau, Penetralla, Student Asst. French (3, 4).

LAURENCE HIGBEE — B.A. Journalism, Football (4), Basketball (4), Baseball (2, 3, 4), Capt. Baseball (4), Phi Delta Theta, Sigma Delta Chi, C. O. L., Press Club, Trowel Club, "M" Club, All-American, Editorial Staff Kaimin (4).



INGA HOEM—B.A. Physical Education, Delta Sigma Chi, Delta Psi Kappa, Penetralla, P. E. P. Club, Vice-Pres. W. S. G. A. (3, 4), Y. W. C. A. Cabinet (3, 4), Vice-Pres. Class (3), Glee Club (2, 3, 4), Choral (3), May Fete (1, 2, 3, 4), Hi Jinx Committee (4).

ELIZABETH MACLAY—B.A. Biology, Phi Sigma Alpha, Y. W. C. A.



EDNA BELKNAP—B.A. Modern Language, Kappa Alpha Theta, Penetralla, Cercle Francis, Student Asst. Mod. Lang. (4).

HANS HANSON—B.A. Business Ad., Alpha Delta Alpha, Alpha Kappa Psi, Commercial Club, Treas. Com. Club (2, 3), Treas. Class (4), Frontier Staff (4).



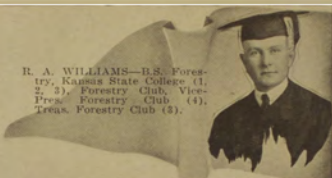
FELIX FRANCO—B.S. Forestry, Trowel Club, Social Science Club.

JEWELL GODFREY — B.A. Modern Languages, Delta Gamma, Penetralla, Pan-Hellenic, Women's Executive Committee (2, 3), Chairman Co-ed Formal (3).





JESSIE BIERMAN—B.A. Biology, Alpha Phi, Phi Sigma Alpha, Vice-Pres. Class (3), Orchestra (1, 2), Pan-Hel. (2, 3), Hi Jinx (3), Student Asst. Biology (3).



R. A. WILLIAMS—B.S. Forestry, Kansas State College (1, 2, 3), Forestry Club, Vice-Pres. Forestry Club (4), Treas. Forestry Club (3).



E. P. DIERMEYER—B.S. Forestry, Ohio State (1), Sigma Phi Epsilon, Sigma Phi Upsilon, Trowel Club, Forestry Club, Vice-Pres. Intercollegiate Forest Clubs of America (4), Student Asst. Forest Surveying.



MAUDE CAMPBELL—Ph.B. Pharmacy, Delta Gamma, Iota Phi Epsilon, Pharmaceutical Association.



LOIS THOMPSON—B.A. History, Alpha Phi, Penetralla, Treas. Y. W. C. A. (4), Vice-Pres. Mortar Board (4), Student Asst. History (4).



JOHN SOUTHWICK—B.A. Law, Varsity Track (1), Phi Delta Alpha, Phi Delta Alpha, Social Science Club, Pres. Social Science (4), Hobo Club, Trowel Club, All-American Club, Silver Star Club.



CHARLES SPILLER—B.A. Business Ad., Baseball (1, 2, 3, 4), Sigma Phi Epsilon, Alpha Kappa Psi, C. S. A. (1, 2, 3, 4), Commercial Club, Student Council (2), Class President (2).



NORINE MURPHY—B.A. English, Dramatics (4).





HARRY DAHLBERG — B.A.
Business Ad., Football (1, 2,
3, 4), Capt. Football (4), Varsity
Wrestling (1), Varsity
Track (2, 4), Phi Delta Theta,
Alpha Kappa Psi, Silent Sen-
tiel, "M" Club, Pres. "M"
Club (4), Trowel Club (4).

DORIS THETGE — B.A. Math-
ematics, Masquers' Club, 1, 2,
3, 4), Vice-Pres. (4), Mathe-
matics (1, 2, 3, 4), Vice-Pres.
(3), Social Science Club (4),
Sec. (4), Press Club (4), May
Pete (1, 2, 3, 4).



VIOLA HAMILTON — B.A. His-
tory, Student Asst. (4).

MONROE DE JARNETTE —
B.S. Forestry, Forestry Club,
Pres. Forestry Club (4),
Trowel Club, Student Asst.
Forestry (4).



J. ARTHUR JOHNSON — B.A.
Business Ad., Iota Nu, Alpha
Kappa Psi, Commercial Club,
Social Science Club, Interfrat-
ernity Council.

MERLE THOMPSON — B.S.
Pharmacy, Iota Nu, Kappa
Psi, Pharmacy Club, Pres.
Phar. Club (3), Student (2,
3, 4).



STELLA CHANDLER — B.A.
Business Administration.

VIRGINIA YEGEN — B.A. Busi-
ness Ad., Kappa Alpha Theta,
Masquera, Social Science, Sec.
Social Science (3).





FLORENCE JENSEN — B.A.
English, Penetralla, Duniway
Prize English (2), Vice-Pres.
Craig Hall (3), Treas. Mortar
Board (4).

IDA SYLVESTER — Ph.C.
Pharmacy, Iota Phi Eta, Iota
Pharmacy Club, Penetralla,
W. S. G. A. Executive Com-
mittee (2), Craig Hall Execu-
tive Committee (2), Vice-
Pres. Craig Hall (2).



F. J. CASSIDY — B.A. Modern
Lang., Cerele Francals.

WADE REICHEL — B.A. Bot-
any.



OLIVE REICHEL — B.A. Latin,
Austen College, Montana
State Normal.

RUTH JARL — B.A. History,
Kappa Kappa Gamma, Vice-
Pres. Class (4).



SADIE ERICKSON — B.A. Jour-
nalism, M.A. History, Alpha
Phi, Theta Sigma Phi, Kappa
Tau, Penetralla, Press Club,
Kalmu Staff (2, 3, 4), Editor
Sentinel (3), W. S. G. A. (2,
3).

CECIL PHIPPS — B.A. Math.,
Sigma Nu, Math. Club Treas.
(2), Sec. (3), Kappa Tau,
Masquers, Simpkins Hall
Manager (1), R. O. T. C. Capt.
(1), Student Asst. Physics
(3).





NEOLA HOLLENSTEINER —
B.A. Modern Language, Y. W.
C. A. (1, 2, 3, 4), Craig Hall
Ex. Council (4).



ELAINE BATES—B.A. Jour-
nalism, Kappa Kappa Gamma,
Theta Sigma Phi, Penetralla,
Press Club, Commercial Club
(2), Editorial Board of Kai-
min (4), Assistant Managing
Editor Kaimin (3), Sentinel
Staff (3), Editor University
News Bulletin (4), Hi Jinx
(1), Glee Club (2, 3, 4), Cho-
ral (3), May Fete (1, 2), Stu-
dent Asst. Jour. (4).



HAROLD HENDRON — B.A.
Forestry, W. S. C. (1, 2), For-
estry (3, 4).



OLIVE DOBSON—B.A. Physi-
cal Education, Kappa Kappa
Gamma, Delta Psi Kappa,
Penetralla, Sec. Class (3),
Glee Club (2, 3, 4), Student
Asst. (4).

GERTRUDE CLARK — B.A.
Math., Kappa Tau, Penetralla,
Math. Club, Pres. Math. Club
(3), W. S. G. A. Treas. (3, 4),
Y. W. C. A. Cabinet (2, 3),
President Y. W. (4), Sentin-
el Staff (3), Pres. Mortar
(4), Chairman Hi Jinx (4),
Craig Hall Sec. (3).



GUY MOONEY—B.A. Journal-
ism, Sigma Nu, Sigma Delta
Chi, Silent Sentinel, Press
Club, A. S. U. M. Manager
(2), Chairman Student Council
(4), Sec. Student Council
(3), Pres. Class (3), Manager
Kaimin (3), Ed. Kaimin (4),
A. S. U. M. Budget Commit-
tee (3, 4), Chairman Home-
coming Committee (4).



WINNIFRED SMITH — B.A.
English, Kappa Tau, Sec. Y.
W. C. A. (4).



MILDRED CARPENTER—B.A.
Biology, Phi Sigma Alpha,
Glee Club (4).





FAY COLLINS—B.A. Modern Language, Delta Sigma Chi, Penetrals, Masquers, French Club, Spanish Club, Glee Club (1, 2, 3).

RUTH CAVIN—B.A. Physical Education, Delta Psi Kappa, Sec. Mortar Board (4), Vice-Pres. P. E. P., P. E. P. (2, 3, 4), Music Club (2), Sec. A. S. U. M. (4), Chairman Athletic Com. W. S. G. A. (3), Pres. Girls' Athletic Council (3, 4), Y. W. C. A. Cabinet (1, 2, 3, 4), Y. W. C. A. Delegate (4), Board Ath. Control (4), Glee Club (1, 2, 3, 4), Choral (1, 2, 3, 4), Student Asst. (4), May Fete (1, 2, 3, 4).



PAT KEELEY—LL.B. Law, Football (3), North Dakota (1, 2), Theta Chi, "M" Club, C. O. D. Club, Vell King (4), Aber Day Judge (3), Student Council (4), Varsity Volley Manager (3), Pres. Law Association (3), Band (3), Orchestra (3), Masquers, Student Asst. Gym, Military Science (4), Major R. O. T. C.

WILLIAM WALTERSKIRCHEN—B.A. Math., Football (3, 4), Basketball (3), Baseball (3), Sigma Nu, Pres. of Math Club (3), "M" Club, Pres. of C. S. A., Capt. R. O. T. C. (2).



LOIS JAMES—Law, Alpha Phi, Wisconsin (3), Sec. Law Association.

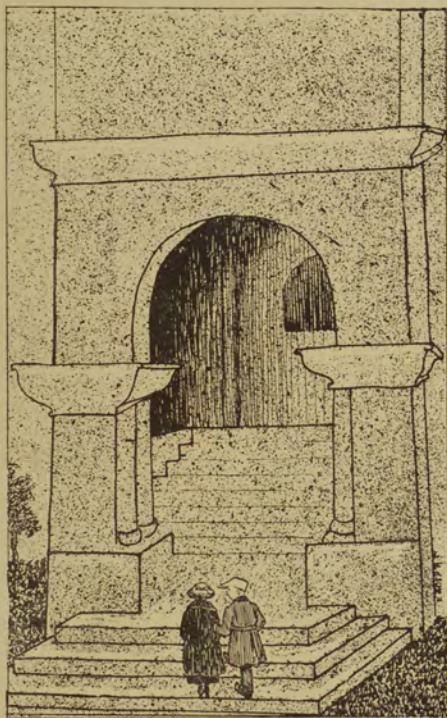
WILLIAM ZEH—B.S. Forestry, Sigma Phi Epsilon, Forestry Club, Rifle Club.



THOMAS SWEARINGEN—Graduate Student Biology, Sigma Nu.

LAMBERT DE MEERS—B.A. Business Ad., Football (3), Sigma Chi, Alpha Kappa Psi, Masquers, "M" Club, Silent Sentinel, A. S. U. M. Delegate-at-large (2), Junior Prom Chairman.





JUNIORS



Officers



Ronald Kain

Virgil Wilson

Gladys Robinson

Mildred Lore





Crews
Mitchel
Toulouse
Degenhart
Boyd

Skylstead
Joy
Klamer
McKoin
Wiederman

Baldwin
W. Wilson
Christenson
Himes
L. Showell

Ballard
Moore
Wilson
Henderscn
E. Thompson

Rose
Benson
Carnal
Gregory
Tiedt

Hall
Griswold
A. Wilson
Jacobson
Vedder



P. White
Higgins
Deckaney
McCann
O. White

Hyde
Harner
Robinson
Smith
Kain

Brockway
Warner
Moore
Gesner
Dorsey

James
Bakeby
Hawk
Rohrer
Carney

Walker
Farrell
M. Showell
L. Jameson
McAllister

W. Wilson
Evans
Hutshenson
Redding
Boyd



Ahern
Farrell
McHatton
Wagner
Stimpert

Dietrich
Daylis
MacDonald
Carver
Goff

Roberts
Christenson
J. Farmer
Ingram
K. Smith

W. Allen
Laraya
L. Stewart
Howard
Rabe

McQuay
Foote
R. Hamilton
A. Farmer
Colton

Rakeman
Phelps
Spencer
E. Dexter
N. Wilson



SOPAS



Officers



James Murphy

Mary X. McCarthy

Dorothy Dixon

Thomas McGowan





McClay
Rice
Striet
Lockridge
Bue

Lynch
Algren
Crumbaker
Frollicher
Windsor

Nevills
Pallin
Egeberg
Hughes

Hobart
Pope
Levin
Beeman

Deeney
McDonald
Carlson
O'Neill
McMahon

Thompson
Burkhart
Finch
Brayton
Uehlinger



Eliot
Higgins
Westby
Johnston
Thompson

Fergus
Bailey
Hauck
Gillespie
Carson

Pedlar
Fuller
Farrington
Bradshaw
Lewis

Albright
Sanden
Morrison
Finch
Welverton

Conrad
Walker
Getty
Thomas
Adams

Cogswell
Hollohan
Kent
Gliese
Falch



Rooney
Sheedy
Nagle
Rutherford
Coffee

Nelson
Ramsey
Leary
Stevens
Jordan

Mattson
Keough
Straw
Boyd
McClay

Stark
Parmalee
McNair
Murphy
Dragstedt

Doerr
Black
Storey
Smith
Lyons

Blomgren
Baptist
Bell
Barnhart
Jordan



Wagy
Harper
Brewer
Kershner
Jones

Pearce
Craighead
Carson
Karcher
Ross

Spelman
Garrett
Simerson
Shepard
Cawley

Oleson
Murphy
Moffett
Lonegway
Carson

Smith
Tillman
Daugherty
Porter
Wilson

Brown
Scott
Baird
Thisted
Dixon



Thibadeau
Gorman
Reynolds
Guthrie
Petzoldt

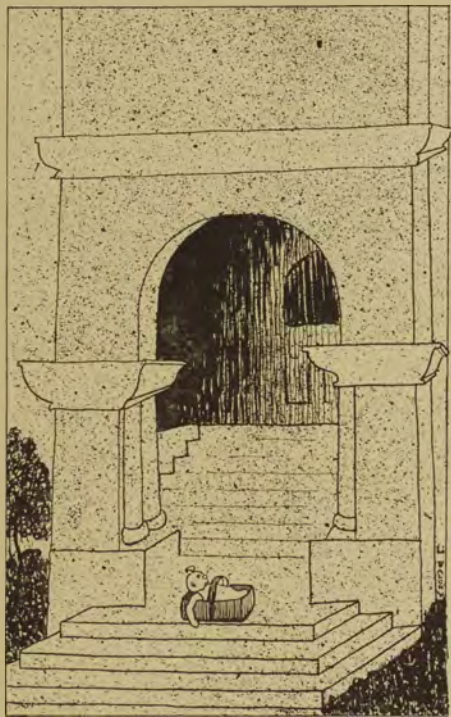
Faucett
McNinch
Turk
M. McCarthy
Shlick

Graves
Gibson
Daugherty
Gudmunson
Murphy

Duffy
Emhoff
Fowler
Brown
Gally

Small
Driscoll
Charles
Ahlgren
Egan

Stone
Armitage
Rowe
Hubbard
Brown



F
R
O
S
S
A



Officers



Eugene McKinnon

Mildren McQuarrie

Ann McAuliffe

Harold Reynolds





Graves
Merritt
McGinley
Harker
Forrest

Bloomenthal
McConnell
Hudson
Rogers
England

Fogle
Cooney
Harris
Sharp
Allard

Jones
Hauck
Wallace
Lindstrom
Lintenger

Anderson
Fryer
Snyder
Duncan
F. Ramsey

Thurston
Christenson
Tanner
O'Mally
Williams



Onstedt
Schweitzer
Reed
Dion
Davis

Bennett
Stark
Carson
Scharf
McDonald

Fullerton
Lundborg
McKowan
Adams
Hokesvig

Bullock
Benson
Martin
Barnum
Webster

McCracken
Brusetten
McDonald
Sloan
Murphy

McKay
Whitcomb
Farrell
Raney
Badger



Jacobsen
Beavers
Wickes
Danaher
O'Neill

Gillespie
Tuggle
Lennon
Philpott
Connell

Fagg
Reynolds
Shultz
Baggs
Nicols

Owens
Watters
Anderson
Aho
Garvin

Kelly
Kenyon
Kliff
Balf
Tresal

Tuggle
Feller
Harker
Mengon
Baily



Rector
Staggs
Huntington
Young
Himes

Frazier
McCarthy
Mascotte
Moody
Tiedt

DeCray
McQuarrie
Graham
Knuth
McKensie

Killoy
Hines
Miller
Caswell
Scully

Wahr
Coates
O'Conner
Lennon
Johnson

Watson
Price
Roysdan
Edwards
Crandal



Wilson
Shawell
Peterson
Moore
Pete

Thorn
Peterson
Johnson
Connell
Swanson

Reeley
Sigworth
Lambert
Blackford
Lewis

Faick
Lore
Gudmunson
McHaffie
Shields

Harvey
McAuliffe
Johnson
Skelton
Deeney

Hershey
Claus
Smith
Lundell
Cuttell



Hedges
Murray
Brennan
Wilson
O'Neil

McGuire
McRae
Matthews
Danish
Burt

Dudley
Farrell
McKinnon
Egleston
Morris

Wilkinson
Powell
Reynolds
Anderson
Felner

Conrad
O'Brien
Riley
Moore
Bierman

Dahlber
Rowe
Kehn
Lebkicher
Reynolds



Thranum
Taylor
Pfener
Lind
Caffrey

Wellman
Bedford
Mallory
Russell
Hargut

Wood
Martin
Quast
Carney
Rottler

Nicholus
Rudd
McMillan
Swartz
Allen

Thompson
Kirkwood
Wilson
Bradford
McPherson

Hudson
Symons
Willis
Vaughn
McFadden



Connell
Inch
Terrance
McQuire
Neil

Kahn
Ceck
Eliffand
Kelly
Davenport

Trotter
Bristol
Plummer
Thompson
Brennan

Smith
Hardenburg
Jacobson
Ashford
Sprake

Crow
Hopkins
Griffith
Sabinen
Reynolds

Velikanje
Niles
Armitage
McKinnon
Christy



O. McKay

Sargent

Bailey

Boucher

Fosterling

Kenyon



