

Administration



Laying the cornerstone of Main Hall--1895





Montana State Board of Regents—From left to right: Mr. M. E. Richard, Mrs. Marjorie W. King, Mr. John E. O'Neill, Mr. John D. French, Miss Harriet Miller, Governor Tim Babcock, Attorney General Forrest H. Anderson, Mr. A. A. Arras, Mr. C. P. Moore, Mr. Gordon D. Mullendore, Mr. Boynton G. Paige.

Board of Regents Chooses Twelfth U of M President

Robert T. Pantzer, acting president of the U of M since August 15th, 1966, after President Robert Johns' resignation, was named to the presidential position on December 16th of the same year. Pantzer, a graduate of the U of M's business school in 1940 and its law school in 1947, joined the institution's faculty as financial vice president in 1957. He is the first University President to also have served as student body president at the U of M, having filled this position for the 1939-40 school year.



Oscar John Craig, pictured at the right in his office, was the first president of the University, serving from 1895 to 1908, and he is also credited as being the University's founder. Born of Scotch-Irish parents, Craig received a Doctor of Philosophy degree from Wooster University in 1887. He was a well known contributor to educational journals.



Robert T. Pantzer
President of the University of Montana

Administration



THOMAS J. COLLINS
Administrative Assistant to the President
Director of Public Services



LAURENCE E. GALE
Academic Vice President
Professor, Pharmacy

FRED S. HONKALA
Dean, Graduate School
Director of Research, U of M Foundation
Professor, Geology

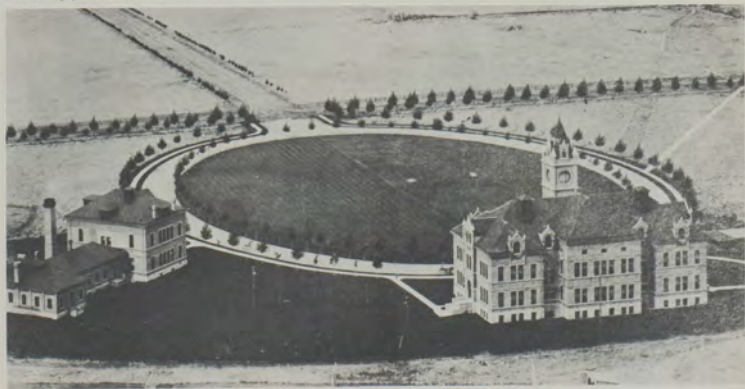


CALVIN L. MURPHY
Controller and Business Manager,
Business Office



NORMAN E. TAYLOR
Administrative Vice President

Main Hall, about 1900, was flanked only by the Old Science building, now the Geology building. The school's heating plant was attached to the rear of the science building.





HOMER E. ANDERSON
Director of Admissions



ROBERT P. BANAUGH
Director, Computer Center;
Professor, Computer Sciences



ROBERT B. BLAKELY
Director, Food Service



BASIL B. BOBOWIEC
Assistant Director, Health Service;
Lecturer, Health and P.E.



JAMES A. BROWN
Director, Residence Halls



RAY F. CHAPMAN
Director, Student Activities
and Student Union

Administration



MAURINE CLOW
Associate Dean of Students
Professor, Psychology



OAKLEY COFFEE
Director, Endowment Foundation

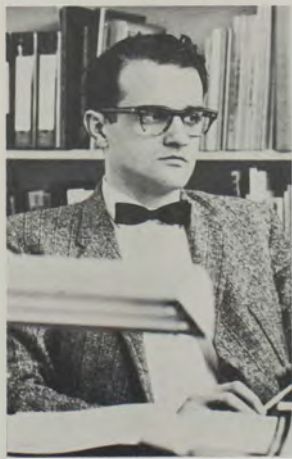


ANDREW C. COGSWELL
Dean of Students
Professor, Journalism

A bicycle shed stood in front of Main Hall about 1900. The Science building, now the Geology building, housed the campus heating plant, also.



EDMUND K. COLBY
Director, Audiovisual Centralized
Service,
Assistant Professor, Education





The lawn in front of Main Hall during Interscholastics, 1946, displayed a large "M" as a special decoration.



JOHN J. CRAIGHEAD
Leader, Montana Cooperative
Wildlife Research Unit;
Professor, Forestry and Zoology

GEORGE W. CROSS
Assistant Dean of Students;
Assistant Professor, Health & P.E.

ROBERT B. CURRY
Director, Health Service
Associate Professor, Health and P.E.

WILLIAM D. DIEHL
Director, Bureau of Business
and Economic Research





JESSE K. DOVE
Director of Nonacademic
Personnel



HUGH F. EDWARDS
Executive Secretary,
Alumni Association



NELSON H. FRITZ
Supply Manager, Associated
Students Store



RAYMOND L. GOLD
Research Director, Institute
for Social Science Research;
Professor, Sociology



ROBERT E. GORMAN
Director, Counseling and
Testing Center; Associate
Professor, Education



CHARLES E. HOOD
Director of Placement;
Assistant Professor, Education

Administration



MAXINE C. JOHNSON
Assistant Director, Bureau
of Business and Economic
Research; Professor, Business
Administration



ROBERT H. JOHNSON
Director, Northern Rocky Mountain
Planning Center;
Professor, Education



CARL L. LARSON
Director, Stella Duncan
Memorial Institute;
Professor, Microbiology



KEITH T. LARSON
Manager, Family Housing



M. GLENN LEWIS
Assistant Director, Food Service



LEONARD L. LEWIS
Manager, Data Processing



EMMA B. LOMMASSON
Assistant Registrar



CLAUD E. LORD
Director, Printing Services



EARL W. MARTELL
Director, Student Activity Facilities;
Business Manager, Athletics

Main Hall and the Science building, before 1900.





MORRIS H. McCOLLUM
Manager, Associated Students Store



JAMES PARKER
Director, Physical Plant



CHARLOTTE L. RISK
Assistant Director, Placement Center

EDWIN RUSS
Chief, Plant Protection-
General Security



JACK RYAN
Associate Director,
Alumni Association



LEO SMITH
Registrar;
Professor, Education



Administration



RICHARD A. SOLBERG
Director, Biological Station;
Associate Professor, Botany



Main Hall at night, about 1950.

LAWRENCE D. STUART
Director of Information Services



EARLE C. THOMPSON
Dean of Library Service;
Professor, Library



CHARLES WADE
Foreign Student Advisor



First meeting of U of M Faculty--1895





Faculty and Seniors



*"Outstanding
Teacher of
the Year"---
Dr. Horst Jarka*



Dr. Jarka receives his award from William Andrews, President of the U of M Alumni Association.

Dr. Horst Jarka, associate professor of foreign languages and a U of M faculty member since 1959, was named "Outstanding Teacher of the Year" at the Awards Convocation this spring. The honor was accompanied by a check for \$500 and an engraved plaque, presented to Jarka by William Andrews, President of the U of M Alumni Association. The award was given for "excellence in the performance of duties and marked dedication to the cause of education."

Selection was made on the basis of nominations submitted by junior and senior students in a poll conducted by members of Phi Kappa Phi, scholastic honorary. Nominations were evaluated by a screening committee and the winner chosen.

An Austrian native, Dr. Jarka taught English and German in Vienna for eight years before coming to the U of M in 1959. He also taught German at the National Bank of Austria Private School, English and German in an Austrian Realgymnasium (junior college) and English at the Police Training School, Vienna. The linguist received a Ph.D. from the University of Vienna in 1955, and he also holds teacher's diplomas from the University of Vienna, as well as from the University of Commerce, Vienna. He attended the University of Minnesota, 1959-52, as a Fulbright scholar.

Dr. Jarka has presented papers at professional meetings and published articles in German and American journals. At present, he is working on a college text edition of a 19th century German author.



*Left to right: Bjarne Johnson,
Dr. Jarka, William Andrews*



In Memoriam

Edward S. Chinske

*Assistant Professor, Health and
Physical Education*

Mrs. Edith Ross

*National Science Foundation
Executive Secretary*

Dr. Laurence Edward Gale

Academic Vice President



Dr. Laurence Edward Gale

Dr. Laurence Edward Gale, 42, U of M academic vice president since April, 1966, died unexpectedly Sunday, July 30, while fishing approximately 30 miles northwest of West Yellowstone. He suffered a massive coronary at approximately 9 p.m. He was in the immediate company of Dr. Robert Curry, director of U of M Health Services, who administered mouth-to-mouth resuscitation for more than one hour, but Dr. Gale did not respond. Dr. Gale was one of 11 University members in the company of 40 of the nation's business and professional leaders who were on an annual U of M Foundation pack trip.

"The loss of Larry Gale is a very telling blow to the University of Montana and all of Montana because of his very keen interest in the institution and his extremely superb administrative abilities. Replacing him will be an almost impossible task. Speaking personally, I feel I have lost an extremely valued colleague and also a sincere friend," said President Pantzer.

Dr. Gale was born April 22, 1925, in Bonners Ferry, Idaho. He was graduated from Idaho State College in 1949 with a B.S. degree in pharmacy. He received a master's degree from Washington State University in 1952 in pharmacology and physiology, and in 1954 he received his doctorate in pharmacology.

He held the Silver Star medal for service in the Army in World War II and was a former acting president and former Dean of Idaho State University at Pocatello. Dr. Gale was active in higher education associations, especially in the Northwest. Last October, he was awarded a Department of the Army Certificate of Appreciation for Patriotic Civilian Service. In January of this year, he was elected to represent the Class A public schools of Montana in the Northwestern Association of Secondary and Higher Schools and to serve on the Executive Committee as a representative of higher schools. The spring issue of the U of M alumni magazine, *Copper, Silver, Gold* carried an article written by Dr. Gale entitled "The University Now—And in the Future?" He also was a member of a certification team of the Northwest Accrediting Association. Recently he had been working on a curriculum study of the University of Montana.

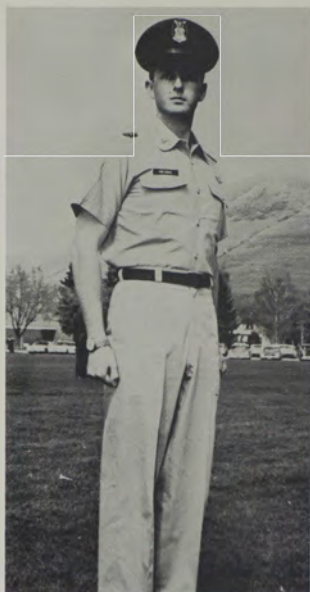
Outstanding Students

Every year the faculties of each U of M department are asked to select an outstanding student on the basis of scholarship and service to the university community. The following students were selected as this year's representatives.



Army ROTC

PETER F. MOHAN, who was commissioned as a second lieutenant upon graduation this spring, is the Military Science department's representative. Mohan, who served as colonel of the brigade this year at the U of M, received a bachelor's degree in the Liberal Arts and was active in the Newman Foundation and Knights of Columbus. Mohan, from Butte, plans to make the Army a career. He received the Missoula Rotary Club's annual commander's trophy at the Army ROTC awards ceremony this spring.



Air Force ROTC

ROBINSON VAN SICKLE, a sociology major from Great Falls, is this year's Air Force ROTC candidate. Van Sickle was cadet corps commander for fall quarter and received the Distinguished Military Student award. He served on publications and special activities boards as a sophomore. Van Sickle plans to enter law school at the U of M next fall.

Anthropology

GERALD CLARK, the honored anthropology student, plans on attending graduate school at the University of Utah, where he has been awarded a teaching assistantship. Clark, from Missoula, is a member of Alpha Kappa Delta, a sociology honorary, and the Montana Archeological Society. He was a member of the Kootenai River Archeological Survey crew in 1966 and will be a member of an archeology field crew in Utah following graduation.



Botany

MRS. CAROL BROMLEY, from Voorheesville, New York, is the outstanding senior in botany. Mrs. Bromley, who graduated with high honors, is a member of Phi Kappa Phi and Alpha Lambda Delta scholastic honoraries. At Cornell University, she received a Gordon Watkins scholarship for biology and a New York Regents Scholarship, and at the U of M she received an award from Phi Sigma, national biological honorary, for outstanding work in biological science. Mrs. Bromley will work toward a master's degree in plant ecology.

Accounting

DONALD HEFFERNAN is the outstanding senior in the department of accounting in the School of Business Administration. Heffernan is a member of Beta Gamma Sigma, national business honorary, and Accounting Club. He has received several scholarships during his college career, as well as the Senior Key Award, presented by the Montana Society of Certified Public Accountants. Heffernan will be employed as staff accountant for a Seattle firm after graduation, moving from his hometown of Missoula.



Business

JAMES SCHWARTZ, from Missoula, represents the School of Business. Schwartz served as president of the Accounting Club this year. He received a Rocky Mountain Lumber Company scholarship. Schwartz will attend the U of M next year as a graduate assistant, where he hopes to receive a master's degree.

Business Education

MISS LYNNE MORROW, Great Falls, is the outstanding student in the department of business education. Miss Morrow is a member of Delta Gamma, social sorority, and Beta Gamma Sigma, Alpha Lambda Delta, Phi Chi Theta, Phi Kappa Phi, and Mortar Board, scholastic honoraries. A former Spur, Miss Morrow also served as ASUM secretary and ASUM vice-president and was selected as one of six outstanding women this year by AWS. Miss Morrow plans to teach school in California next year and eventually earn a master's degree in guidance counseling. Miss Morrow received a certificate from Alpha Lambda Delta at Prizes and Awards convocation for maintaining a 3.5 grade point average for her entire college career.





Business Administration- Finance

LYDIA A. FAUL, chosen as the outstanding senior in Finance, is from Helena. Miss Faul is a member of Beta Gamma Sigma, national scholastic honorary, and has accepted employment with the Union Bank and Trust Company of Helena, Montana.

Biology Wildlife

GARY CLAYTON MILKE, Great Falls, plans to do graduate work at the University of Alaska on a moose study. His hobbies are hunting, fishing, hiking and wildlife photography. He hopes to do field work in research or to become involved in big game management. Milke graduated with one of the highest grade point averages recorded in recent years among the wildlife biology students.



Chemistry

MATTHEW J. PETRIN, Missoula, will be a graduate assistant on a National Science Fellowship at the University of Minnesota in 1967-68. He is a member of Phi Kappa Phi and was president of the student chapter of the American Chemical Society. He was the recipient of the Chemistry Alumni-Faculty Award of \$50.00 in honor of W. B. Bateman, J. W. Howard and R. H. Jesse. The award is given to the senior with the most promising future in chemistry. During the summer of 1967, Petrin will work at the National Reactor Testing Station at Idaho Falls, Idaho. He has worked for the Forest Service, as a chemical technician at the U. S. Forest Service Laboratory and as a teaching assistant in the Quantitative Analysis Lab at the U of M under Dr. W. P. VanMeter.



Education

DIANA MCKIBBEN, Billings, was a Spur, national service sophomore honorary, a Junior Sponsor, president of her sorority, Kappa Kappa Gamma, and treasurer of Mortar Board, national women's senior service honorary. Miss McKibben hopes to teach primary grades.

English-History

GREGORY L. ULMER, Miles City, is the first student to be claimed outstanding by two departments. This June he received a degree from the Department of English and the Department of History, thus graduating with a double major. Ulmer is a member of Phi Kappa Phi, national scholastic honorary; Phi Eta Sigma, national freshman honorary; Phi Alpha Theta, national history honorary and Sigma Alpha Epsilon, national social fraternity. He was sophomore delegate to Central Board, student governing body and a Rhodes Scholar candidate. Ulmer won a National Defense Education grant to Brown University where he will study toward a doctorate in comparative literature.



Foreign Language

STEPHEN P. JUDD, Butte, is a member of Sigma Delta Pi, national Spanish honorary, Air Force ROTC, and Newman Club. This year he won the B. A. Thomas Memorial Award for the outstanding student in Spanish. During the summer of 1965, Judd studied in Saltillo Coahuila, Mexico at the Academia Internacional de Espanol. Upon graduation he was commissioned a second lieutenant in the Air Force. He will be a graduate assistant in Spanish at the University of New Mexico in 1967-68.

Forestry

LAWRENCE J. HOLT, Snohomish, Washington, is a member of Montana Druids, Forestry School service honorary; Xi Sigma Pi, national forestry honorary; Forestry Club, and the Society of American Foresters. Holt has accepted a position with the Department of Natural Resources in the State of Washington at Forks, where he will be doing road location work.



Geology

BRICE LAMBERT, Ekalaka, Montana, has been on a Marathon Oil scholarship at the U of M and has a teaching fellowship at the University of Missouri to work toward an M.S. degree. His particular interest is in Stratigraphy and Paleontology.

Health and Physical Education

JOANNE DIXON, Missoula, has been general sports manager for the Women's Recreational Association for 1965-66 and treasurer for 1966-67. Miss Dixon was president of Delta Psi Kappa, women's national physical education sorority this past year; is a member of Phi Kappa Phi, national scholastic honorary and was secretary of her social sorority, Alpha Phi for 1966-67. Miss Dixon was High School Interscholastic Golf Champion in 1960-61-62-64. In 1966, she was Big Sky Open Champion and took third place in the Women's State Golf Tournament in 1966. At the U of M she has been on the Intercollegiate Women's Volleyball, Basketball and Golf Teams. She has a graduate assistantship to Washington State University at Pullman, Washington, where she will work toward an M.S. degree in physical education.



Home Economics

AUDREY L. KOEHLER, Missoula, was awarded a book by Alpha Lambda Delta at the Prizes and Awards Convocation. The book is awarded to the member of the graduating class who has maintained the highest scholarship average throughout her college career. Miss Koehler was a member of Spurs, Home Economics Club, Kappa Omicron Phi, home economics honorary, Junior Sponsor, Mortar Board, the Missoula Symphony Orchestra and Delta Gamma, social sorority. Miss Koehler holds the National Scholastic Pillsbury Award and this coming year will work in Minneapolis as Associate Manager of Educational Services Department of Pillsbury Consumer Service Kitchens.



Journalism

PAULA LATHAM WILMOT, Great Falls, is a member of Kappa Alpha Theta, social sorority; Alpha Lambda Delta and Phi Kappa Phi, scholastic honoraries; Theta Sigma Phi and Kappa Tau Alpha, journalism honoraries; Spurs and Mortar Board, both national service honoraries. Mrs. Wilmot was awarded one of the Alpha Lambda Delta certificates at the Prizes and Awards Convocation for maintaining a 3.5 grade average for her entire college career. In 1965-66 she was assistant business manager of the Kaimin, the student newspaper, and was promoted to business manager for the 1966-67 school year. She hopes to make a career in advertising.

Law

JOHN R. GORDON, formerly of Kalispell and now of Brookings, Oregon, won the Lawyers Title Award and the Rocky Mountain Mineral Foundation Scholarship, and belongs to the Montana Student Bar Association; Phi Delta Phi, law honorary, and Phi Alpha Theta, history honorary. Gordon earned his B.A. degree in history and political science. He will be a law clerk for Judge Pope in the 9th Circuit Court of Appeals, San Francisco.





Mathematics

JIM POLLOCK, Billings, is a member of Phi Kappa Phi, scholastic honorary. Pollock is a transfer student from Eastern at Billings, Montana, where he was president of the Mathematics Club. He plans to attend graduate school at U of M where he received a NASA Traineeship to work toward an M.A. degree. He hopes to earn a Ph.D. so that he may go into teaching on the college level or into research in industry.

Microbiology

RITA C. HESTEKIN, Billings, is a member of Phi Kappa Phi, scholastic honorary; Mortar Board, senior women's service honorary; Newman Club and The Legion of Mary. She has been an undergraduate research participant in microbiology at the U of M. In her sophomore year she was an exchange student from the University of Portland to Austria. Miss Hestekin hopes to work in a Denver hospital next year.



Music

SHARON WEAVER, Anaconda, was both president and vice-president of Mu Phi Epsilon, music honorary. She is a member of Pi Kappa Phi, music honorary and Phi Kappa Phi, scholastic honorary. A Senior Resident at Eloise Knowles Hall, Miss Weaver is the recipient of the Mu Phi Epsilon Outstanding Senior Award, of a scholastic honor scholarship and the Presser Foundation music scholarship. She is a student of Professor Rudolph Wendt and will do graduate work at the U of M in 1967-68.

Pharmacy

BONNIE F. PESCHEL, Missoula, is a member of Phi Kappa Phi, national scholastic honorary; the American Pharmaceutical Association and Kappa Epsilon, women's pharmacy honorary. At the Honors' Banquet, Miss Peschel received the Lilly Achievement Award, a gold medal. She is a member of Rho Chi, national pharmacy scholastic honorary which has a 3.5 grade index requirement to join. Miss Peschel will intern in Anaconda, Montana.



Political Science

KEMAL SIDDIQUE, Singapore, was a chairman delegate to the Model United Nations at Portland, Oregon. At the Montana Model UN on the U of M campus he was Secretary General. He has attended the U of M the past three years and hopes to go to graduate school at the University of Singapore where he will prepare for teaching or the Foreign Service.

Psychology

JIM F. FARNES, Worden, Montana, is a member of Psi Chi, national psychology honorary. He received three honor scholarships from Eastern Montana College, in 1963-66, has completed his senior year at the U of M and will begin graduate work the fall of 1967 in Clinical Psychology here at the U.





Social Welfare

HEIDI CLARK HARSHA, Billings, was awarded the Eloise Knowles Award by Mortar Board, given annually to the senior woman not in Mortar Board who best exemplifies the ideals of Mortar Board. Mrs. Harsha is a member of Alpha Kappa Delta, sociology honorary; was secretary to Triangle Club; historian for Spurs, national sophomore service honorary; a Junior Sponsor and Chairman of Associated Women Students Rules and Regulations Committee. She has been chairman of AWS Job Opportunities, secretary-treasurer of the Student Association of Social Workers, president and vice president of the State United Campus Christian Fellowship, a member of Student Life Committee, a delegate to Leadership Camp, a member of University Congregational Church and belongs to Volunteers in Community Action.

Speech Communication

WALTER KIRKPATRICK, Billings, won first place in 1964, 1965 and 1966 in the Montana Intercollegiate Debate, first in the Lincoln-Douglas Montana Intercollegiate Debate in 1966, was awarded the Jerry Baldwin Memorial Trophy in 1967 and a special Recognition Award at the annual Awards Banquet. At Prizes and Awards Convocation, Kirkpatrick was awarded the Aber Memorial Cash Prize of \$20. He is a member of Tau Kappa Alpha, national speech honorary; Phi Alpha Theta, national history honorary and president of Debate and Oratory Association. Kirkpatrick has accepted a teaching assistantship at the University of Iowa for the next year where he will work toward an M.A. degree in speech.



Speech Pathology

JEAN K. McDONALD, Great Falls, is a member of Alpha Omicron Pi, social sorority, where she served on Standard Board. She belongs to Phi Kappa Phi, national scholastic honorary and graduated with honors. Miss McDonald has worked as an assistant in the Library during her college career and next year has an assistantship in speech pathology where she will work toward an M.A. degree. For the past two summers, Miss McDonald has worked as a speech therapist in Whitefish, Montana.



Zoology

FRANCINE HINTZMAN, Polson, was a member of Alpha Lambda Delta, freshman scholastic honorary and is a member of Phi Kappa Phi, national scholastic honorary. She will work toward a B.S. degree in Medical Technology at the U of M in 1967-68.

Two outstanding seniors chosen by their departments were not available for pictures.

Health and Physical Education---Men

DENNIS WILLIAMS, presently stationed in Germany with the U. S. Forces, lettered in freshman football in 1962; is a member of Phi Epsilon Kappa, men's physical education honorary and Sigma Nu social fraternity. He was commissioned a second lieutenant after completing advanced ROTC at the end of fall quarter.

Sociology

MRS. NANCY ANN MICKELSON, Chicago, Illinois, entered the U of M in January, 1966. She transferred from Joliet Junior College, Joliet, Illinois. Mrs. Mickelson had previously attended St. Mary's College, Notre Dame, Indiana. When she completed her undergraduate work at the end of winter quarter, Mrs. Mickelson had a cumulative grade point average of 3.77.



ROBERT W. COONROD
Dean, College of Arts and Sciences
Professor, History

School of Arts and Sciences



Diane DuBois



Mary Huffine



Lewis Schneller

An early tradition lasting well into the 1940's was the annual May Fete, a highlight of spring quarter (1913).



Department of Anthropology



FRANK B. BESSAC
Associate Professor



GORDON BROWDER
Chairman and Professor, Sociology, Anthropology
and Social Welfare; Executive Director, Institute
for Social Science Research



CHARLES T. BROCKMANN
Visiting Instructor



Vernon Lane



PHILIP M. HOBLER
Instructor



CARLING I. MALOUF
Professor



DEE C. TAYLOR
Associate Professor



SHERMAN J. PREECE, JR.
Chairman and Associate Professor

Departments of Biology and Botany



MARK J. BEHAN
Assistant Professor



MEYER CHESSIN
Professor



REUBEN A. DIETTERT
Professor



CLARENCE C. GORDON
Associate Professor



JAMES R. HABECK
Associate Professor



Janis Almini



Peter Frazier



James Stephen



LeROY H. HARVEY
Professor; Curator, Herbarium



Laying cornerstone at Biological Station at Yellow Bay, 1912.



CHARLES N. MILLER
Assistant Professor



Aquatic studies.



For many years students and faculty at Yellow Bay lived in tents.



JOHN M. STEWART
Chairman and Professor

Department of Chemistry



Constance Carlisle



James Harkins
Matthew Petrin



RONALD E. ERICKSON
Associate Professor



JAMES W. COX
Assistant Professor



H. RICHARD FEVOLD
Associate Professor



RICHARD E. JUDAY
Professor



EARL C. LORY
Professor



MAGAR E. MAGAR
Assistant Professor



R. K. OSTERHELD
Professor



FRED SHAFIZADEH
Professor; Director, U. of M. Wood
Chemistry Research Laboratory



FORREST D. THOMAS
Associate Professor



WAYNE P. VAN METER
Associate Professor



GEORGE WOODBURY, JR.
Assistant Professor



LELAND M. YATES
Associate Professor



ROBERT F. WALLACE
Chairman and Professor

"A creative economy is the fuel of magnificence."—Ralph Waldo Emerson

Department of Economics



Lorne Sivertson



James Thueson
Joseph Ward



BASIL A. BROWNE
Visiting Lecturer



GEORGE B. HELIKER
Professor



WILLIAM HOEKENDORF
Assistant Professor



ROBERT L. PETERSON
Visiting Lecturer



RICHARD E. SHANNON
Professor



JOHN H. WICKS
Associate Professor



Land was cheap on University Avenue in 1904. The house and barns at the entrance to the oval were built at that time to be occupied by University President Craig.



WARREN P. CARRIER
Chairman and Professor

Department of English



Marcia Melton

Nathaniel Good
Marcia Monroe

Kaylene Black
Paula Flesch
Leslie Griffin
Gayle Ann Rolandson

Ramona Evans
Carol Glenn
Janet Malone
Sheldon Thompson



LAWRENCE E. BARSNESS
Instructor



JESSE BIER
Professor



AGNES V. BONER
Professor



WALTER L. BROWN
Professor

"Literature is an investment of genius
which pays dividends to all subse-
quent times."—John Burroughs



JAMES LEE BURKE
Instructor



MERREL D. CLUBB, JR.
Professor

Department of English



ELMER J. COLE
Instructor



ANTHONY CRONIN
Visiting Lecturer



JAMES A. CRUMLEY
Instructor



EARL S. GANZ
Assistant Professor



VEDDER M. GILBERT
Professor



HERBERT GOTTFRIED
Instructor



DONALD C. HABERMAN
Assistant Professor



BARBARA J. HARR
Instructor



PHYLLIS HARRIS
Instructor



RICHARD HUGO
Assistant Professor



ERIC WARFIELD JOHNSON
Instructor



WALTER N. KING
Professor



BERNARD M. KNAB
Instructor



LOIS H. MONK
Assistant Professor



JOHN E. MOORE
Professor



DEXTER M. ROBERTS
Assistant Professor



DAVID J. SMITH
Assistant Professor



THEODORE H. SHOEMAKER
Acting Chairman and Professor

Department of Foreign Languages

Of all the languages of earth in which
the human kind confer
The Master speaker is the Tear; it is
the Great Interpreter.

—Ridgely Torrence



NANCY J. BENNANI
Instructor



VELDON J. BENNETT
Instructor



Mary Iserman
Marcia Moline
Linda Nelson

Kathleen Matthias
Mary Morgan
Warner Nichols



DOROTHY R. BOHN
Instructor



ROBERT R. BROCK
Assistant Professor



ROBERT M. BURGESS
Professor



MAUREEN C. CURNOW
Instructor



MARGUERITE EPHRON
Professor



JAMES A. FLIGHTNER
Instructor



LIDIA HABERMAN
Lecturer



MARIA A. HARVEY
Lecturer



EUGENE L. HEBERT
Instructor



HORST JARKA
Associate Professor



FRED KERSTEN
Assistant Professor

Department of Foreign Languages

William M. Aber, professor of Latin and Greek from 1895 to his death on September 3, 1919, was noted for beautifying the university campus in his spare time. Aber Grove and Aber Day, campus traditions named after "Daddy" Aber, have since been discontinued.



GERTRUD LACKSCHWITZ
Assistant Professor



PETER P. LAPIKEN
Professor



RUBY R. MARTIN
Lecturer





MARILYN METCALF
Instructor



PATRICIA J. NONNENMACHER
Instructor



DOMENICO ORTISI
Associate Professor



Foreign language students demonstrate their speaking ability in language labs, part of every modern foreign language program.

WARD H. POWELL
Professor

JANICE R. RIDGES
Instructor

Also: JOAN BIRCH
Instructor, Fall Quarter

THORA SORENSON
Professor



Department of Geography



CHRIS FIELD
Acting Chairman and Assistant
Professor



PAUL B. ALEXANDER
Assistant Professor



SIMON M. EVANS
Visiting Lecturer



JAMES J. NASUTI
Visiting Instructor

Department of Geology



ROBERT W. FIELDS
Chairman and Professor



Harold Nordstrom



DAVID D. ALT
Assistant Professor



GARY W. CROSBY
Assistant Professor



DONALD W. HYNDMAN
Assistant Professor



ROBERT M. WEIDMAN
Associate Professor



ARNOLD J. SILVERMAN
Associate Professor



JOHN P. WEHRENBURG
Professor



DONALD WINSTON, II
Assistant Professor

Department of Geology



WALTER C. SCHWANK
Chairman and Professor;
Coordinator of Summer Session

JACK SWARTHOUT
Athletic Director; Head Football Coach,
Winter and Spring Quarters



Department of Health and Physical Education

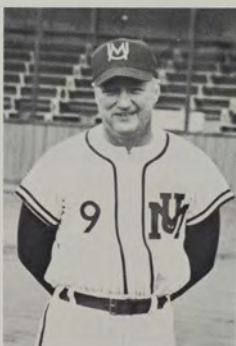
Health is the second blessing that we mortals are
capable of—a blessing that money cannot buy.
—Izaak Walton



WALLACE E. BROWN
Assistant Football Coach,
Winter and Spring Quarters



CATO K. BUTLER
Sports Publicist



ALEXANDER C. CAMPBELL
Assistant Football Coach;
Instructor



EDWARD S. CHINSKE
Assistant Professor,
Head Golf Coach



ROBERT D. COPE
Assistant Basketball Coach,
Instructor



GEORGE P. DAHLBERG
Professor



HUGH C. DAVIDSON
Head Football Coach,
Fall Quarter Instructor

Stephen Attardi
Lorna Bell
Jack Black
James Casey



Joanne Dixon
Charlene Goldhahn
Linda Knoche
Carol Matthew



Jill McIntosh
Mary Powell
Judith Renman
Velma Thompson





Construction on Harry Adams Field House was completed in 1954. The picture above shows construction in the early stages. The public dedication featured a basketball tilt between the Grizzlies and NCAA champs, the Indiana Hoosiers.



"Wild Bill" Kelly was one of the greatest halfbacks ever to play at the University of Montana. "Wild Bill" was named to the All-American and All-Pacific Coast honor teams. In addition, as a senior he threw the only touchdown of the East-West Shrine game to Russell Sweet, another university star, to give the West team a 6-0 victory. Kelly, who played his last college football in the fall of 1926 (excluding the New Year's Day Shrine game), led the Grizzlies to a 27-0 win over Bozeman that year.



JOHN A. ELLWAY
Assistant Football Coach,
Winter and Spring Quarters



ROBERT S. ERICKSON
Assistant Football Coach,
Winter and Spring Quarters



LOWELL J. GRUNWALD
Head Baseball Coach



— 1937 Football Team —

The 1937 Grizzly football team is considered by Grizzly sports fans to be one of the most outstanding athletic teams in the University's sports history, having compiled a seven-win, one-loss record. This team, coached by George "Jiggs" Dahlberg, defeated Whitman College, Texas Tech, Oklahoma City University, San Francisco University, Montana State College, Gonzaga University, and the University of North Dakota, and lost only to the University of Idaho (by a score of 6-0). A victory over Idaho conceivably could have won the Grizzlies an invitation to the Cotton Bowl game. Pictured are: Back row—Kees Narbutis, William Lazetich, Joe Pomajevich, Wes Morris, Harry Shaffer, Glen Van Bramer, Robert Thornally, Philip Peterson, Pat Connally, Archie McDonald, James Spelman, Jack Hoon, unidentified, Fred Jenkin. Middle row—Frank Smith, Arthur Peterson, Tom Gedgoid, Aldo Forte, Perry Stenson, Leonard Loyes, Joe Strizich, Gerald Brower, Frank Shields, John Dolan, Ed Ogle, Joe Mariana. Front row—William Matasovic, Paul Szakash, Frank Nugent, Jack Emigh, Charles Williams, Milton Popovich (Captain), Roland Lundborg, Ed Bofto, Emil Tabercci, Tom Rolston, Robert Beal.



CHARLES F. HERTLER
Professor



TOM KINGSFORD
Assistant Football Coach,
Head Wrestling Coach,
Instructor



DAVID S. KRAGTHORPE
Assistant Football Coach,
Instructor



HARLEY W. LEWIS
Track and Cross-Country Coach
Instructor



MAVIS LORENZ
Assistant Professor



RONALD V. NORD
Head Basketball Coach,
Instructor



NASEBY RHINEHART
Trainer, Instructor



BRIAN J. SHARKEY
Assistant Professor



FREDERICK A. STETSON
Instructor,
Head Swimming Coach,
Manager of University Pools



AGNES L. STOODLEY
Professor



VINCENT WILSON
Professor

Not Pictured:
RICHARD CERINO
Faculty Affiliate
NORA STAAEL
Faculty Affiliate

This picture of Interscholastic was taken in 1918. The event, which is the highlight of the year for Montana high school track stars, was held in Missoula from 1904 until 1967, when the meet was moved to Billings. The bleachers in the picture were built on the back of U of M's first gym.

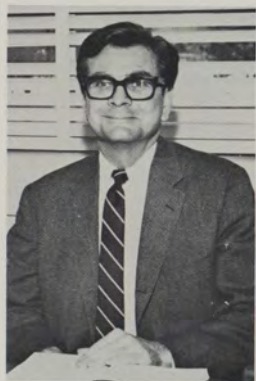


Pictured above are the football coaches of 1929: Ed Chinske, freshman coach, Harry Adams and General Milburn, varsity coaches, and Gordon Rognlien, freshman coach.

Department of Health and P. E.



MELVIN C. WREN
Chairman and Professor



GERALD CERNY
Instructor



WILLIAM B. EVANS
Assistant Professor

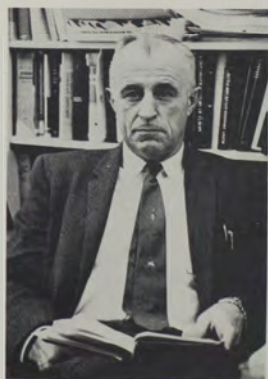
Department of History



Douglas Barnes
Duncan Crump



Claire Evans
James Curry



OSCAR J. HAMMEN
Professor



H. DUANE HAMPTON
Assistant Professor



JULES A. KARLIN
Professor



J. EARLL MILLER
Professor



David Gliko
Dennis Olijnyk



Robert James
Michael Palmer



Rose Ley
Larry Putnam



Sue Marquarat
George Saylor



Kathleen Matthias
Jonathan Smith





Senator Mike Mansfield has been honored by the establishment of a "Mansfield Endowment." The endowment is being supported by contributions and will sponsor a series of lectures on foreign affairs at the U of M, starting in January, 1968.

The endowment was established to honor the Senate Majority Leader's 25 years of service in Congress. Mansfield was a student at the University of Montana from 1930 to 1934, and he received his bachelor's and master's degrees there. After earning a Ph.D. at the University of California, Mansfield was appointed to the faculty of the U of M as a teacher of Far Eastern and Latin American History. In 1956 he received an LL.D. degree from the U of M. He is now a professor of history on leave with permanent tenure.



ROBERT LEWIS PETERSON
Hill Professor



BENJAMIN G. RADER
Assistant Professor



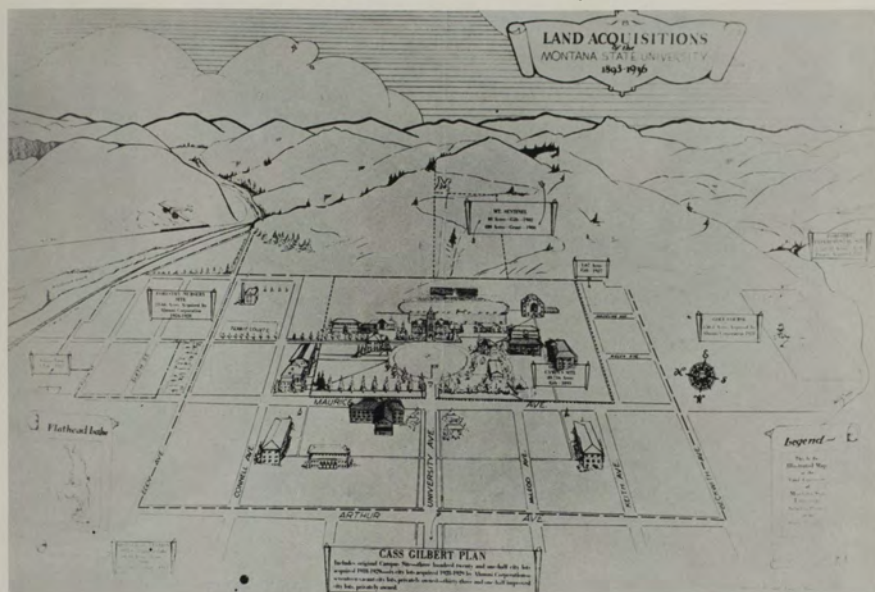
JAMES I. ROBERTSON, JR.
Associate Professor



K. ROSS TOOLE
Professor



ROBERT T. TURNER
Professor



Land Acquisitions map, 1893-1936.



JOHN VAN DE WETERING
Associate Professor



MAXINE VAN DE WETERING
Lecturer



CHERRYL A. WAGNER
Instructor



EMMA BRISCOE
Chairman and Associate Professor

Department of Home Economics



JOAN CHRISTOPHERSON

Mary Bowles
Frances Doran
Linda Fooshee



Jaye Larsen
Linda McDonald
Kathy Sawyer
Barbara Wood



A woman's work, grave sirs,
is never done.—Lawrence Eusden



VANETTA LEWIS
Assistant Professor



Dedication of the women's center on September 23, 1953, saw the following dignitaries present (from left to right): Miss Helen Gleason, head of the Home Economics Department; Miss Inez Ratekin, president of the Montana Federation of Women's Club; Mrs. Hugo Aronson, wife of the governor of Montana; Dr. Agnes Stoodley, Women's Health and P. E. Director; Dr. Maurine Clow, Dean of Women; and Miss Marilyn Foster, president of AWS.



SUDIE D. MASON
Instructor



HELGA H. McHUGH
Instructor



FANNIE E. MILODRAGOVICH
Associate Professor



WILLIAM M. MYERS
Chairman and Professor



DAVID R. ARTERBURN
Assistant Professor

Department of Mathematics

Mathematics takes us into the region of absolute necessity, to which not only the actual world, but every possible world, must conform.

—Bertrand Russell



WILLIAM R. BALLARD
Professor



Loxi Eide



Robert Flaccus



Darrell Hagen



Ruth Rollins



Marilyn Weeks



CHARLES A. BRYAN
Assistant Professor



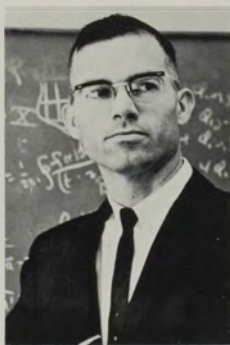
ELMER W. GALL
Instructor



EDMUND P. GEYER
Instructor



DANIEL HANSEN
Instructor



MASON E. HENDERSON
Assistant Professor



GLORIA C. HEWITT
Associate Professor



MERLE MANIS
Assistant Professor



ELIZABETH PAPOUSEK
Assistant Professor



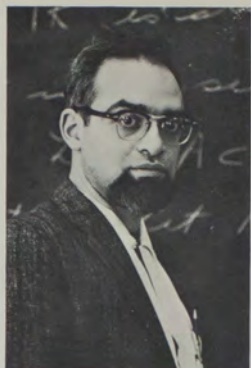
JOHN A. PETERSON
Associate Professor,
Assistant Director of Computer
Center



DENNIS C. PILLING
Instructor



HOWARD E. REINHARDT
Professor



GEORGE W. TRICKEY
Instructor

Department of Mathematics

Department of Microbiology



MITSURU J. NAKAMURA
Chairman and Professor



CARL M. EKLUND
Lecturer



Carol Viche



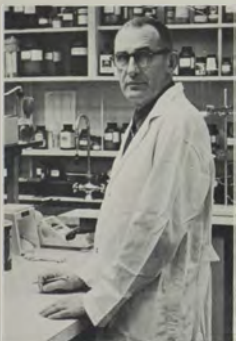
RICHARD A. FAUST
Associate Professor



DAVID B. LACKMAN
Lecturer



KELSEY C. MILNER
Lecturer



RICHARD A. ORMSBEE
Lecturer



JON A. RUDBACH
Lecturer



HERBERT G. STOENNER
Lecturer

Also:
BERNARD J. McLAVERY
Lecturer



JOHN J. TAYLOR
Associate Professor



RICHARD N. USHIJIMA
Assistant Professor

Department of Philosophy

Philosophy is the microscope
of thought.—Victor Hugo



EDWIN L. MARVIN
Chairman and Professor



THOMAS H. BIRCH, JR.
Instructor



HENRY G. BUGBEE
Professor



WILLIAM S. BURFORD
Associate Professor



FRED KERSTEN
Assistant Professor



JOHN F. LAWRY
Associate Professor



JOHN F. LOGAN
Assistant Professor



CYNTHIA SCHUSTER
Associate Professor

Department of Physics



JOHN N. BRADFORD
Assistant Professor



RICHARD J. HAYDEN
Professor



MARK J. JAKOBSON
Professor



RANDOLPH H. JEPPESEN
Instructor



C. RULON JEPPESEN
Chairman and Professor



A Model T "spins out" on the road in front of the old science building and then-campus heating plant, which is now the geology building. (1918)



First biology class—Main Hall. L. to R.: Will Craig, Edith Bickford Murphy, Caddie Kronkite Grubbs and Dr. Pixley.



LEO B. LOTT
Chairman and Professor



RICHARD A. CHAPMAN
Instructor

Department of Political Science



Larry Putnam

Douglas Barnes
Douglas Hetrick
Kathleen Matthias
Jonathan Smith

Carol Christopher
Donald Kampfe
Patrick McLaughlin
Lee Tickell



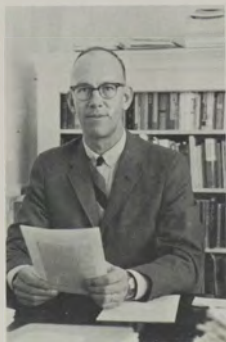
Mrs. Lucille Armsby, executive secretary to many presidents and adviser to Mortar Board, "pours" at one of their functions in old student union—1948.



Old Student Union "Coke Shop"—1950



EMILIE LORING
Instructor



THOMAS PAYNE
Professor



ELLIS L. WALDRON
Professor
Director, Bureau of Government



RICHARD F. WRIGHT
Instructor

Pre-Medicine



Michael Thompson



HAROLD BABB
Chairman and Professor

Department of Psychology

"There are few things more exciting to me
than a psychological reason."

—Henry James



CHARLES K. ALLEN
Assistant Professor



R. B. AMMONS
Professor



PETER HEMMINGWAY
Associate Professor



FRANCES A. HILL
Assistant Professor



Donna Elder



Warner Nichols



Virginia Stonnell



JOSEPH W. JENNINGS
Assistant Professor



JOHN R. MEANS
Assistant Professor



BERT R. SAPPENFIELD
Professor



ODIN C. VICK
Assistant Professor



H. A. WALTERS
Assistant Professor



JOHN G. WATKINS
Director of Clinical Training
Professor



JAMES M. WHITEHOUSE
Associate Professor



ROBERT R. ZIMMERMAN
Visiting Lecturer



Dr. Ammons packs his aquarium on July 19, 1961, to move from "Jumbo" Hall to the old Law School, which is now the Psychology Building.



GORDON BROWDER
Chairman, Sociology, Anthropology, and
Social Welfare
Professor, Sociology
Executive Director, Institute for
Social Science Research



William Fenton
Jill McFarland

Sharon Hurlbert
Stephen Palmer

Faye Bourret
Suzanne Clinker
Sheila Kair
Sarah Vhay

Ronald Burris
Lionel Coon
Maxine Lane
Gail Zervas



C. LEROY ANDERSON
Assistant Professor, Sociology



CHARLES T. BROCKMANN
Visiting Instructor, Sociology



LAWRENCE DODGE
Lecturer, Sociology



ROBERT J. DWYER
Associate Professor, Sociology



MABELLE G. HARDY
Instructor, Social Welfare



HAROLD TASCHER
Professor, Social Welfare



Linda Hardt
Kaylene Kittleson

Sharon Juelfs
Karen Northey



TWILA B. VOORHEES
Lecturer, Sociology



RICHARD F. WRIGHT
Instructor, Political Science

Department of Sociology and Social Welfare



R. WAYNE PACE
Chairman and Associate Professor



HOWARD J. AYRES
Instructor



DAVID M. FISHER
Instructor



RALPH Y. MCGINNIS
Professor



JAMES OWEN
Instructor

Speech is a mirror of the soul: as a man speaks, so is he.—Publius Syrus



Jane Jeffers, the only girl ever to hold the ASUM presidency, talks to Montana Governor Sam C. Ford, during inauguration ceremonies for new university president, James A. McCain. (1946)



John Preston, Jr.



WILLIAM P. WHITE
Instructor



RICHARD M. BOEHLER
Professor



ROBERT B. CHANEY, JR.
Assistant Professor



CHARLES D. PARKER
Chairman and Professor



VALERIE S. COLE
Instructor



JACK R. OLSON
Visiting Assistant Professor

Department of Speech Pathology

Not Pictured:
H. M. CARSON, Lecturer



PETER B. SMITH
Instructor



Angela Etchepare



Jean McDonald



Carol Robinson

Department of Wildlife Technology

The wildlife technology curriculum combines courses from chemistry, forestry, and zoology.



Bruce Fried



Raphael Jingu



Don MacCarter



Randolph Miller



Charles Morgan



PHILIP L. WRIGHT
Chairman and Professor

John Mohr

Department of Zoology

Faculty members not pictured:
GEORGE W. BARTELMIZ, Guest Investigator
J. FREDERICK BELL, Lecturer
HAROLD A. BRAUN, Lecturer
WILLIAM L. JELLISON, Lecturer
CORNELIUS B. PHILIP, Lecturer



Ron Berg



Robert Haburchak



Patrick Harrison



Bonnie Scott



Carol Viche



LUDVIG G. BROWMAN
Professor



ROYAL B. BRUNSON
Professor



JOHN T. HARRIS
Assistant Professor
Wildlife Technology



ROBERT S. HOFFMAN
Professor; Director of
Environmental Biology



E. W. PFEIFFER
Associate Professor



DONALD A. JENNI
Associate Professor



WILLIAM B. ROWAN
Associate Professor



JAMES R. TEMPLETON
Associate Professor



GEORGE F. WEISEL
Professor



GEORGE SINGER
Assistant Professor



LINUS J. CARLETON
Acting Dean and Professor
Director of Student Teaching



Wayne Ellington
Nathaniel Good

Judith Fenton
Glenda Gum

Jane Gibson
Duane Halverson

Kathryn Boger
Virginia Clinker
Olive Glover
Rebecca Hess

Pauline Bourquin
Patrick Conway
Cheryl Good
Dale Huhtanen

"It was in making education not only common to all, but in some sense compulsory on all, that the destiny of the free republics of America was practically settled."

—James Russell Lowell

Pictured at right is Mrs. Blanche Whitaker, first music teacher at the U of M. Mrs. Whitaker was born in 1856 and died in 1941.



John Joseph

Leslie Melichar

Donna Smith

Una Koontz

Judy Purdy

Janet Smith

Thomas Layton

Mary Putnam

Ruth Smith

Mary Rognlien

Reid Stevens

Suzanne Schulz

James Thill



JAMES W. COX
Assistant Professor



LOIS A. DOVE
Instructor



IRENE D. GROOM
Assistant Professor



LAWRENCE W. HODGES
Assistant Professor



JOHN HUNT
Associate Professor



N. NORMAN JACOBSON
Assistant Professor



ROBERT H. JAY
Assistant Professor



KENNETH V. LOTTICH
Professor



GEORGE H. MILLIS
Professor

School of Education



Pictured above is the interior of the U of M's first library, which became the law school and is now the psychology building.



JAMES J. R. MUNRO
Associate Professor



HARLAN C. RIESE
Associate Professor



VERNON O. SLETTEN
Professor



WILLIAM G. STONER
Associate Professor



FRANK J. WATSON
Associate Professor



ELAINE WHITE
Executive Secretary and Instructor



ROY C. WHITE
Instructor

School of Business



JAMES L. ATHEARN
Dean and Professor



DONALD J. EMBLEY
Chairman and Professor, Accounting



THOMAS G. JOHNSON
Chairman and Professor, Management



ALVILD J. MARTINSON
Acting Chairman and Associate Professor,
Business Education and Office Administration



Gerald Armstrong



Ronald Aukamp



Marsha Austin



John Barrows



William Beaman



Grant Becker



Thomas Bertino



William Brown, Jr.



Ronald Brunsvold



Steve Chattin



Charles Clough



Jody Crawford



Noel DeBruyn



Donald Dooley



William Doren



Stanley Eastlick



Glenda Edwards



LaVern Erlenbush



Judi Haas



Richard Harding



Dennis Hardt



Roger Haugen



Patricia Hirning



Robert Hogg



Doreen Ibsen



Ronald Lenn



Kenneth McDonald



John Maclean, Jr.



Barbara Maddux



Darrell Malcolm



Douglas Mason



Jack Merten



James Moody

"How happy the life unembarrassed by the cares of business."—Publius Syrus



GLENN R. BARTH
Associate Professor



CHARLES C. BOWN
Assistant Professor

"Business? It's quite simple.
It's other people's money."
—Alexandre Dumas
The Younger

School of Business



PATRICIA P. BRAGG
Assistant Professor;
Research Associate, Bureau of
Business and Economic Research



Gerald Morgan



Lynne Morrow



Leslie Mullen



Larry Olson



Nicholas Teel



John Thompson



Joseph Upshaw



Charlene Watters



Roberta Weikel

"A business with an income
at its heels
Furnishes always oil for its
own wheels.—"

William Cowper



JACK H. DOTY
Associate Professor

"Do you know,
Considering the market, there
are more
Poems produced than any
other thing?
No wonder poets sometimes
have to seem
So much more business-like
than businessmen.
Their wares are so much
harder to get rid of.—"

Robert Frost

"The best business you can go
into you will find on your fa-
ther's farm or in his workshop.
If you have no family or friends
to aid you there, turn your face
to the great West, and there
build up a home and fortune."—

Horace Greeley



HUBERT R. BREUNINGER
Associate Professor



DWIGHT M. EDMONDS
Assistant Professor



BRUCE L. ENNIS
Assistant Professor



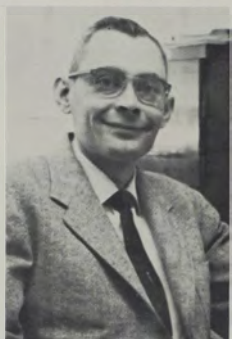
ALBERT T. HELBING
Professor



FRED A. HENNINGSSEN
Associate Professor



LAWRENCE J. HUNT
Assistant Professor



JACK J. KEMPNER
Professor



MARCELLA J. KOCAR
Assistant Professor



LINO A. MARSILLO
Lecturer



PAUL D. MILLER
Assistant Professor



GEORGE L. MITCHELL
Assistant Professor

School of Business



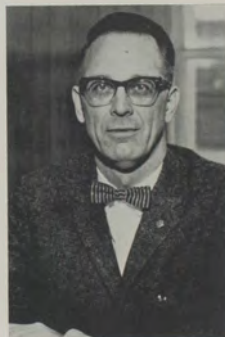
ROBERT LEWIS PETERSON
Hill Professor



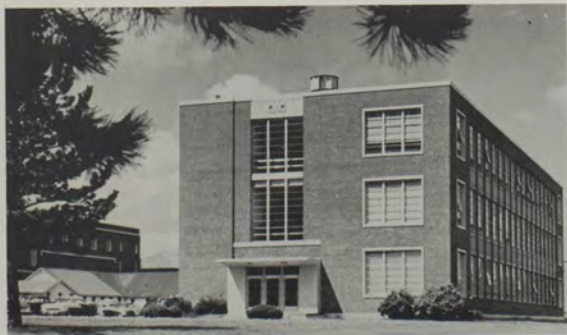
MARGARET A. SWANSON
Associate Professor



Ground breaking, left to right: Alex Stepanzoff, Don Emblen, Ted Jacobs, Dean Maucker, Ray Pew, unknown, Tom Sweearingen. Kneeling, President McCain.



MAX R. SWANSON
Lecturer



Business Administration building



MAURICE C. TAYLOR
Visiting Professor



CHARLES W. BOLEN
Dean; Professor, Music

School of Fine Arts

"The fine arts once divorcing themselves from truth
are quite certain to fall mad, if they do not die."—
Thomas Carlyle



Toni Gies
Edward Groenhout
Jane Haburchak

Mareen Jacobs
Dianne Morrow
Mary Peterson



FIRMAN H. BROWN
Chairman and Associate Professor,
Drama



LAURENCE B. PERRY
Acting Chairman and
Professor, Music



RICHARD B. REINHOLTZ
Chairman and Associate
Professor, Art



Mary Peyton
Daniel Shelhamer
Judy Stocking
Sharon Weaver



EUGENE ANDRIE
Professor, Music



MAXINE M. BLACKMER
Instructor, Art



DONALD DAVIS
Visiting Lecturer, Drama



ADEN F. ARNOLD
Professor, Art



MAURICE A. BRESLOW
Assistant Professor, Drama



JAMES E. DEW
Professor, Art



RUDY A. AUTIO
Associate Professor



DONALD L. BUNSE
Assistant Professor, Art



GERALD H. DOTY
Professor



WALTER HOOK
Professor, Art



J. GEORGE HUMMEL
Professor, Music



RICHARD H. JAMES, JR.
Assistant Professor, Drama

School of Fine Arts

Not Pictured:
RONALD WILDEY
Visiting Lecturer,
Music



DONALD O. JOHNSTON
Associate Professor, Music



MURIEL JANE LEA
Assistant Professor, Music



JOHN L. LESTER
Professor, Music



GEORGE D. LEWIS
Assistant Professor, Music



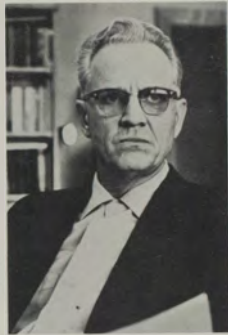
WILLIAM MANNING
Assistant Professor, Music



JOSEPH A. MUSSULMAN
Associate Professor, Music



JOAN L. NISSMAN
Instructor, Art



LLOYD OAKLAND
Professor, Music



DWIGHT V. OVERMYER
Assistant Professor, Music



FLORENCE REYNOLDS
Professor, Music



BEVERLY J. THOMAS
Instructor, Drama



EUGENE WEIGEL
Professor, Music



RUDOLPH WENDT
Professor, Music



DAVID WHITWELL
Assistant Professor, Music



ARNOLD W. BOLLE
Dean and Professor; Director, Forest and
Conservation Experiment Station

School of Forestry

"I think that I shall never see
A poem lovely as a tree"—

Joyce Kilmer



NOT PICTURED:

Research Associates:

Hal E. Anderson
Robert G. Baughman
William R. Beaufait
Arthur P. Brackebusch
Robert F. Cooney
Ronald M. Fuquay
Charles E. Hardy
Stanley N. Hirsh
Philip C. Johnson
Jack L. Lyon
Robert W. Mutch
Arthur L. Roe
Richard C. Rothermel

Also, Lawrence Lackey,
Professor.

Lawrence Anderson
William Bambina
David Deevey
Gerald Jimeno

Eugene Jonart
Robert Hammer
Thomas Hanson
John Hendrickson



Lawrence Holt
George Kantz
Wayne Knipping
Kenneth Knoche
Donald Lander

Allan Lemon
Roderick Morrison
David Muller
Niles Sacia
Francis Sakaya

Vernon Schmitt
Lawrence Scott, Jr.
Robert Semrad
Herbert Spradlin



KENT T. ADAIR
Assistant Professor



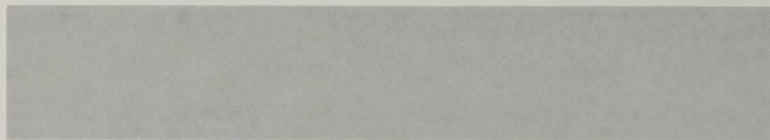
STEPHEN F. ARNO
Instructor



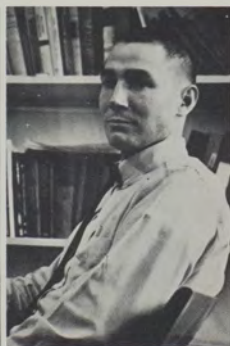
RICHARD W. BEHAN
Assistant Professor



Foresters pose in front of the first Forestry School. The building, located behind Main Hall, originally was part of the barracks built during World War I. It became the first book store, and later, the first clerical service.



GEORGE M. BLAKE
Assistant Professor



LEE E. EDDLEMAN
Instructor



JAMES L. FAUROT
Assistant Professor



FRED L. GERLACH
Assistant Professor



WILLIAM K. GIBSON
Assistant Professor



MANFRED HAIGES
Instructor



RICHARD L. KONIZESKI
Professor



JOHN P. KRIER
Professor



ROBERT W. LANGE
Assistant Professor



MELVIN S. MORRIS
Professor



THOMAS J. NIMLOS
Associate Professor

Not Pictured:
JAMES H. LOWE, JR.
Assistant Professor



W. LESLIE PENGELLY
Associate Professor



WILLIAM R. PIERCE
Professor



ROBERT W. STEELE
Associate Professor



RICHARD D. TABER
Professor; Associate Director,
Forest and Conservation
Experiment Station



EDWARD B. DUGAN
Acting Dean and Professor

School of Journalism



WARREN J. BRIER
Associate Professor

"The newspaper-man is, more than most men, a double personality; and his person feels best satisfied in its double instincts when writing in one sense and thinking in another."—Henry Brook Adams.



Frederick Caruso
Lorretta Lynde



Kay Morton
Jane Stahl



Joseph Ward



PHILIP J. HESS
Assistant Professor;
Director, Radio-TV Studios



DEAN ARTHUR L. STONE
Founder, School of Journalism



From "The Quill," national journalism magazine, October, 1914, *Sentinel* took the above picture, and the following information: "Because Governor Samuel V. Stewart of the State of Montana would not release funds with which to build a temporary home for the School of Journalism at the University of Montana, the journalism students were housed in tents provided by the United States Army. With the aid of army stoves, the tents were made snug and cozy and classes were held without difficulty. When colder weather set in the journalism students were forced into a small wooden building which had formerly been used as a bicycle shed. Later the governor released a sufficient amount of money with which to build a comfortable home for the School of Journalism."



DOROTHY M. JOHNSON
Assistant Professor



ROBERT C. MCGIFFERT
Visiting Lecturer



DONALD C. MILLER
Assistant Professor



SAM REYNOLDS
Visiting Lecturer



ROBERT E. SULLIVAN
Dean and Professor

"It is not uncommon to hear the expression, 'The law is a jealous mistress.' It is true that this profession, like all others, demands of those who would succeed in it an earnest and entire devotion."—George Sharswood



Gerald Archambeault



Charles Beresford



Kenneth Brown, Jr.



Robert Campbell



Rodney Carrier



Gary Christiansen



Douglas Dasinger



Harry Endsley, III



Leif Erickson



John Gordon



Michael Greeley



Larry Juelfs



Dennis Kansala



Donald La Bar



James McLean



Donald Marble



Marshall Dennis



Michael Nash



David Nelson



Louis Nybo



Bradley Parrish



Laurence Peterson



Kenneth Peterson



Richard Thomas



William Romine



Dwaine Roybal



James Sheridan, Jr.



James Screnar



William Snell



Sidney Strong



James Torske



John Warner

"The law is the last result of human wisdom acting upon human experience for the benefit of the public."—Samuel Johnson



Joel Wendt
William Wertz
William Wilborn



BETTY BLANKENSHIP
Administrative Assistant



What is now Psychology was the first Library. From 1913 to 1961 the building also housed the Law School.

EDWIN J. BRIGGS
Professor



GARDNER CROMWELL
Professor



School of Law



Law School Library, 1913



LARRY M. ELISON
Associate Professor



JON A. HUDAK
Instructor



DAVID R. MASON
Professor



LESTER R. RUSOFF
Professor



WILLIAM F. CROWLEY
Associate Professor



SHERMAN V. LOHN
Lecturer



ALBERT W. STONE
Professor

"The law is good, if a man
uses it lawfully."—New Testament



ROBERT L. VAN HORNE
Dean and Professor



RAYMOND J. BENNETT
Associate Professor



GORDON H. BRYAN
Professor

School of Pharmacy



DONALD H. CANHAM
Assistant Professor



BRYANT W. FITZGERALD
Assistant Professor

"I am at a loss to know whether it be my hare's foot
which is my preservative, or my taking of a pill of
turpentine every morning."—Samuel Pepys



Dale Bollinger



John Dempsey



Terry Donahue



Sandra Hurd



Kathy Johnson



Richard Kearney



Karen Moe



An engineering banquet, held sometime before 1914, is a tradition no longer observed at the U of M, for in 1914 the School of Engineering was traded to Bozeman for the Forestry School and Pharmacy School.



FRANK A. PETTINATO
Associate Professor



JOHN L. WAILES
Professor



Robert Morris



John Oie



Bonnie Peschel



David Sanden



James Willits

Affiliated Schools



LT. COL. HARWOOD F. MEANS
Chairman and Professor



MAJOR PAUL C. BREAZEALE
Associate Professor

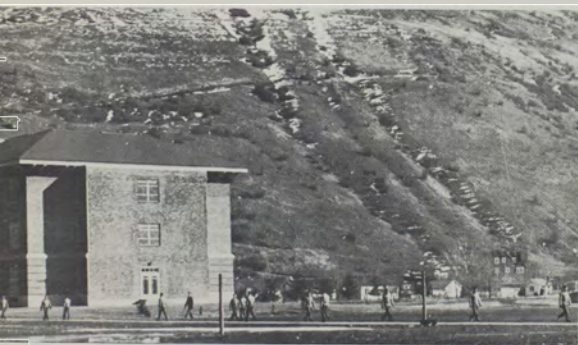


MAJOR CHARLES W. JONES
Assistant Professor

Department of Aerospace Studies



CAPTAIN BRUCE E. MEDLEY
Assistant Professor



Walking the "ramp" was punishment during World War II when the campus was a military post.



MAJOR ALFRED C. AIMI
Associate Professor



MAJOR MAURY S. CRALLE
Associate Professor



LT. COL. KEITH ANGWIN
Chairman and Professor



Old ROTC building.

Department of Military Science



MAJOR CHARLES M. FRIEDLEIN
Associate Professor



CAPTAIN JIM E. HINDS
Assistant Professor



MAJOR RALEIGH R. MEYER
Associate Professor

Affiliated Schools

Library

"He was a one-book man. Some men have only one book in them, others, a library."—Sydney Smith



VIRGINIA L. BAILEY
Instructor



DONALD P. CHVATAL
Assistant Professor



MARY F. DELAND
Assistant Professor



JANE JIH-PING LIU
Instructor



ADELAÏNE S. MIDGETT
Assistant Professor



DOUGLAS E. MILLS
Associate Professor



RITA NELSON
Assistant Professor



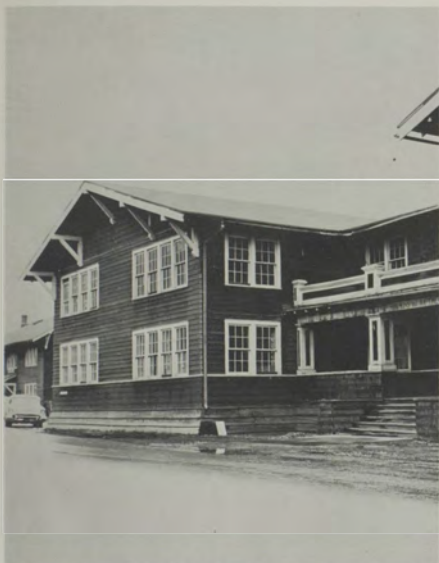
WILLIAM NEWMAN
Assistant Professor



LUCILLE SPEER
Professor



SUZANNE M. WARD
Instructor



Simpkins Hall, pictured above, was built during World War I as army barracks. Later, the hall housed the School of Drama, the first Home Economics Nursery, and Weavery. When torn down in 1962, the hall housed the School of Religion.



TOSHIMI TATSUYAMA
Director and Associate Professor

School of Religion

"In Man, the positive content of religion is the instinctive sense—whether conscious or subconscious—of an inner unity and continuity with the world around. This is the stuff out of which religion is made."—Edward Carpenter



SAMUEL BEAUSOLEIL
Lecturer



GEORGE E. FERGUSON
Lecturer



LINWOOD FREDERICKSEN
Associate Professor



SAMUEL HOROWITZ
Lecturer