

ACTIVITIES



Varsity VODVIL



STAGE



GLEE CLUB

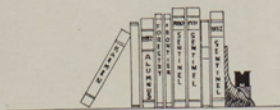


PUBLICATIONS



DRAMATICS

PUBLICATIONS



1932

THE SENTINEL



WALTER P. COONEY
Editor



HERBERT VERHEEK
Business Manager

The 1932 Sentinel Staff



TOM MOONEY
Associate Editor



FREDA McCAIG
Associate Editor



DICK SCHNEIDER
Assistant Editor



EDDIE ASTLE
Humorist



IRENE VADNAÏS
Editor Book 4



JERRY ALQUIST
Editor Book 2





FRED STEINER
Sports Editor



ROBERT BATES
Artist



JIM NUTTER
Editor Book 1



PAT REGAN
Editor Book 6



JOHN DAHLIN
Asst. Business Mgr.



IDELLA KENNEDY
Assistant



STANLEY HILL
Assistant



MARGARET RAITT
Women's Sports



1932

THE SENTINEL



FRED COMPTON
Assistant Editor



MICHAEL KENNEDY
Assistant Editor



KERMIT CARROLL
Circulation Mgr.



KATHLEEN HARRIGAN
Assistant



PHILIP PATTERSON
Art Assistant



MITCHELL SHERIDAN
Assistant



BETTY FOOT
Assistant



ALLEN COWPERTHWAITTE
Assistant





THOMAS MOONEY
Editor



JOEL OVERHOLSER
Business Manager

The Montana Kaimin

Since its beginning as a literary magazine in June of 1898, the Montana Kaimin, official publication of the students of the State University, has done much to shape campus opinion. Published twice a week, on Tuesday and Friday, it reflects current happenings of the student body and faculty.

Organization of the newspaper is divided into two phases—the editorial and business departments. Under the former comes the actual news gathering.



The Kaimin Staff





Putting out the Kaimin

writing and editing. The soliciting of advertisements and their writing is confined to the advertising department of the publication, but the work in both divisions is accomplished entirely by staffs of students, the faculty of the School of Journalism acting only in an advisory capacity when called upon.

Printing of the paper is done by the School of Journalism Press, headed by C. W. Hardy. Mrs. Inez Abbott is instructor in the laboratory course in news writing which prepares copy for the Kaimin, and A. L. Stone, dean of the School of Journalism, instructs the newspaper administration class.

Prior to 1931 the editor of the Kaimin was elected by popular vote of the student body in the general A. S. U. M. elections held in the spring. In 1931 the measure was introduced and passed which delegated the appointment of Kaimin editor and business manager to Central Board, representative student and faculty body, upon the recommendation of Publications board. The latter group is made up of all the editors of all official publications on the campus.

The name "Kaimin" is the Selish word which means "a message," or, literally, "anything in black and white," and was submitted as a name for the paper in a contest held the year of its inauguration by Margaret Ronan, graduate of the State University with the class of 1902.

The Kaimin celebrated the completion of the first year of its printing at the Journalism "Shack" on February 20, 1932. The mechanical equipment of the school was donated by O. S. Warden of the Great Falls Tribune; Anaconda Copper Mining company; J. D. Scanlon of the Miles City Star; W. A. Sigorney of the Western Newspaper union, Billings; W. O. Ensign, Deer Lodge, and the Mergenthaler Linotype company, besides other Montana publishers who contributed materials and services.

Thomas Mooney, Missoula, and Joel Overholser, Fort Benton, have been editor and business manager, respectively, of the Kaimin for the year 1931-32.



Standing: Coon, Whitaker, Frykman.
Seated: Benson, Woolfolk, Beechel, Hawes.

Forestry Kaimin

STAFF

Joseph Woolfolk	-	-	-	-	Managing Editor
Kenneth Beechel	-	-	-	-	News Editor
Howard Coon	-	-	-	-	Business Manager
Richard Whitaker	-	-	-	-	Assistant Editor
Fred Benson	-	-	-	-	Assistant Editor

The Forestry Kaimin is the principal medium through which forestry alumni retain their contacts with the school, and students and faculty reflect their interest in the progress of the field.

Developing from a small pamphlet published first in 1915, the eighteenth edition has attained magazine size.

It reviews the activities of the school, including the traditional Foresters' Ball, the Rifle club, Forestry club and the skating rink which the latter sponsored this year. Druids and intramural sports have their place in the publication. Circulation and the directory of alumni were managed by Joel Frykman and Evans Hawes.

Pictures of wild life and scenic cuts emphasize the western atmosphere which the publication effects. Feature articles are illustrated with outdoor scenes, many of them taken in western Montana.



Joe Woolfolk





JESSIE CAMBRON



H. G. MERRIAM

Alumnus

The Montana Alumnus is published quarterly as the official organ of the Alumni association of the State University of Montana. Jessie Cambron has edited the Alumnus this year and last.

News of alumni sent in by class secretaries has resulted in the publication this year of a more complete class notes section than is included in any other alumni magazine received in the University exchange.

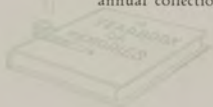
"What Alumni Are Doing" and "The Foreign Letter Bag" are included in the table of contents regularly. The Alumnus was the chief disseminator of plans and announcements for the 1932 reunion.

Frontier

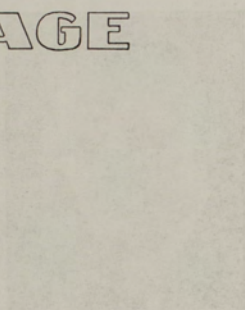
Carefully selected literary contributions having the northwest as their background make up the Frontier, regional magazine, edited and published by Prof. H. G. Merriam, chairman of the Department of English.

High literary worth is required of the stories, poems, sketches and articles appearing in the magazine. Brassil Fitzgerald and Grace Stone Coates are contributing members of the editorial staff. Harvey Thirloway was circulation manager during the past year and Robert Blakeslee acted as business manager.

The Frontier has gained recognition throughout the country because of its merit and contribution to regional literature. During the past few years Edward J. O'Brien has included a number of stories from the Frontier in his annual collection of "Best Short Stories."



STAGE



Little Theatre

The Little Theatre movement in America began in 1915 with the formation of the Provincetown Players in Provincetown, Massachusetts. This group of actors and playwrights, including Eugene O'Neill, Lillian Gish, and others, sought to create a more serious and artistic form of drama than the commercial theatre of the time. They produced plays such as *The Skin of Our Teeth* and *Three Days and Three Nights*, which were praised for their originality and depth. The Little Theatre movement spread to other parts of the country, leading to the formation of similar groups in New York, Chicago, and elsewhere. These groups often focused on producing works by emerging playwrights and exploring themes that were considered too risky for the commercial stage. The movement played a significant role in the development of American drama and the establishment of the Little Theatre as a distinct theatrical form.





WILLIAM ANGUS
Director

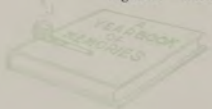
Little Theatre

Montana Masquers are completing their twenty-eighth year of activity and have as their record the production of approximately 150 plays of various lengths. During the last five years, campus dramatic productions have been directed by William Angus, whose resignation as assistant professor of English will be effective next year, when he leaves to begin work on his doctorate at the University of Iowa.

The Montana Masquers produced one major play each quarter of 1931-32. "Devil's Disciple," by George Bernard Shaw, given at the Little Theatre November 20 and 21, was the most ambitious production undertaken during fall quarter. Shaw glorifies the American rebels of the Revolutionary war in the witty and melodramatic vehicle.

Leading members of the cast were: Alice Taylor, Gene Manis, Leslie Pace, Fred Moulton, Ruth Bernier, Jeanette McGrade, Peter Meloy and Taylor Gardner. The play was taken to Butte, Bozeman, Helena and Hamilton, and served as the exchange play between the State University and the State College.

Three student-acted and student-directed one-acts were given October 29. They were: "Rich Man, Poor Man," "The Diamond Necklace" and "Confessional." "The Enchanted Hour," also a one-act, was produced March 10 on the same program with the Spanish three-act, "Sueno de Una Noche de Agosto," which was directed by Cecile Sughrue.





A scene from "Death Takes a Holiday"

"Death Takes a Holiday," major play of the winter quarter, was given at the Fox-Wilma theatre, February 19, for the benefit of the Alumni association. Delos Thorson gave a moving and impressive interpretation of the character "Death" who becomes a self-invited guest at a house-party in an Italian villa, the object of his visit being to find out why people fear and dread him. Jeanette McGrade, Ossia Taylor, William Brown were outstanding in their parts. Others in the cast were: Helen Fleming, Ruth Wallace, Gene Manis, Sylvia Sweetman, Radcliffe Maxey, William Angus, Arthur Roberts, Marian Hanford and Philip Miller.

Eugene O'Neill's play, "The Hairy Ape," staged April 7, offered an opportunity for variety of characterization that was well executed by the cast. Eddie Krause was outstanding in the role of Yank Smith.

"Bumblepuppy" by J. W. Rogers, directed by Ruth Bernier, and "A Wedding" by John Kirkpatrick, directed by Robert Busey and Eleanor Boles, were the two one-acts presented May 5.

"The Far-Off Hills" by Lennox Robinson was the major play for spring quarter. This Irish light comedy was given April 29 and 30. It was directed by William Angus and the cast included: David Duncan, Patrick Clancy; Betty Browne, Marian, his daughter; Kathryn Smith, Ducky, and Virginia Cooney, Pet, two other daughters; Ted Cooney, Dick Delaney; Grant Kelleher, Harold Mahone; Phoebe Patterson, Susie Tynan; Stanley Trachta, Pierce Hagarty. The play was well-received and served as a fitting climax to the productions of the year.





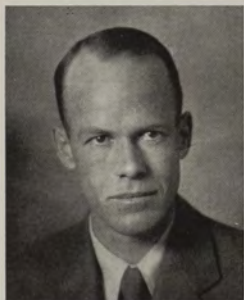
Top Row: Bolleau, Swango, Magnuson, Lanzendorfer, Rhude, Gullickson.
 Standing: Hoffner, Borge, Wickware, Farnsworth, Raquel, Sonstelle, Swanberg.
 Seated: Carnine, Thirloway, Foot, Larson, Kelleher, Alexander.

Debate

With increased student participation in forensic activities fostered by the Montana Debate union, the popularity of debate as an extra-curricular activity has taken great strides forward this year.

State University teams have encountered fifteen outside teams this year on the Pi Kappa Delta question:

Resolved, that Congress should enact legislation providing for centralized control of industry. Four traveling teams were entertained by Montana—a Turkish team from Robert college in Istanbul, Turkey; two representatives from the University of Pittsburgh; two from the College of Puget Sound, and a team from the University of Wyoming. Audience decisions in the first three engagements gave the visitors close victories. The Wyoming encounter was a non-decision debate.



DARRELL PARKER
 Debate Coach

The most extensive undertaking of the season was the 2,000-mile Pacific coast tour taken early in March by Grant Kelleher of Butte and Edward Alexander of Whitehall. This trip resulted in five favorable decisions, two losses and two non-decisions.



Standing: Allen, Hemgren, Pace, Roberts.
Seated: Metlen, Hawks, Kennedy, Harrigan, Bravo.

Hi-Jinx

COMMITTEE

Michael Kennedy	-	-	-	-	-	Manager
Emma Bravo	-	-	-	-	-	Assistant Manager
Kathleen Harrigan	-	-	-	-	-	Assistant Manager
Georgia Mae Metlen	-	-	-	-	-	Dance Chairman
Jerome Frankel	-	-	-	-	-	Stage Manager
Clifton Hemgren	-	-	-	-	-	Property Manager
Nat Allen	-	-	-	-	-	Song Director

A talented cast chosen from the entire student body played in "Son of a Gun," Hi-Jinx musical comedy produced at the Fox-Wilma theatre, December 5. More than seventy students participated in the 1932 production as members of the cast and choruses.

Helen Price took the leading role. Arthur Roberts, Richard Traxler, Marion Smith, Howard Gullickson and Anna Mae Crouse played major parts. Other members of the cast were: Al Rudolph, Crawford Beckett, Leslie Pace, Martha Kimball, Harold Stearns and Ruth Wallace.

There were three acts of comedy developing from the entanglements of an ex-cowboy "stunt" man in his impersonation of the scion of a wealthy New York family.

Hi-Jinx owes its origin to the State University band, its members staging an "All Nations Show" in 1906.





Men's Glee Club

The Men's Glee club made its first appearance of the year early in November with the presentation of a program in Dean DeLoss Smith's studio. Several public recitals were given by the club later. It presented two numbers at the convocation celebrating the bi-centennial of Washington's birth. It also sang with the Women's Glee club when awards were presented to the winners of Interscholastic Track events, and in combination with the Missoula Choral society at Commencement.

The club this year has been affiliated with the glee clubs of America and presented some of the numbers used by the associated clubs at their concert in New York City. Membership of the State University Glee Club increased considerably this year.

Members of the club and their positions follow: First tenor, Nemesio Borge, Alvin Rudolph, Robert Somerville, Earle Drost, John Sasek; second tenor, Robert Fetterly, Charles Johnson, Carl Lantz, Robert Wickware, Jack Jefferson, Arnold Peterson, Howard Rutherford; baritone, Dennis Rovero, Wilbur Wood, Raymond Smalley, Lewis Coriell, George Wilcox, George Dickel; first bass, Edward Carroll; second bass, Edwin McKenzie, Donald Aldrich, Richard Traxler, Joel Frykman, Eugene Hunton.





Women's Glee Club

The State University Women's Glee club has a personnel of more than thirty women representing the best vocal talent of the campus. Under the direction of Dean DeLoss Smith it presented a number of recitals during the year in combination with the Men's Glee club.

Its activities this year, in addition to the presentation of four recitals on the campus, included a program of songs given in Stevensville April 27. It entertained Track Meet contestants May 13 with several numbers when the winners of Interscholastic events received their awards. The two glee clubs united with the Missoula Choral society to provide music at the Baccalaureate service and the Commencement program.

The Women's Glee club this year is superior to any organized in previous years. DeLoss Smith, dean of the School of Music, is the director.

The personnel follows: First soprano, Mary Castles, Lura Jean Hunt, Martha Kimball, Frances Graves, Dorothy Dee Miller, Joy Browning, Ramona Noll, June Mason, Rogetta Perry, Ossia Taylor, Jane Stevenson, Helen Kelleher; second soprano, Annie Evans, Marion Hanford, Louise Kemp, Genevieve Krum, Ellen Shields, Gladys Avery, Harriet Gillespie, Rhoda Cougill, Jean Gordon, Esther Lentz; alto, Ruth Jones, June Hartley, Mary Brickson, Kathleen Dunn, Ruth Harris, Alice Helen Patterson, Martha Davis.





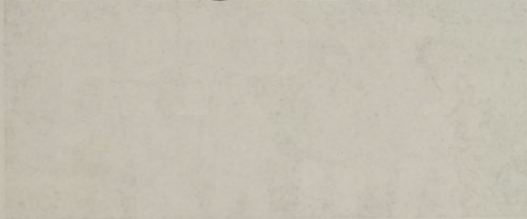
State University Band

The Grizzly band in uniforms of copper, silver and gold add color and harmony to State University athletic contests, rallies and R. O. T. C. parades. Forty-two selected band members led the parade preceding the Grizzly-Bobcat game in Butte and played a joint program with the Bobcat band on Clark field before the game. They joined the parade of Interscholastic contestants on Dornblaser field with the opening of the 1932 Track and Field meet and played during intermissions.

The Grizzly band, under the direction of Roy E. Freeburg, is recognized by State University students as an integral part of the majority of campus activities.

The personnel of the Grizzly band includes: Student leader, George Bovington; manager, Vernon Hoven; drum major, Sergeant Clarence Peterson; trumpets, Andreas Grande, Wilbur Hewitt, Fred O'Dell, Eldon Couey, John Purvis, Jack Robinson, Raymond Smalley; trombones, George Baldwin, Kermit Eckley, Philip Miller, Wesley Scott; clarinets, Lloyd Carmichael, Bill Clarke, George Dickel, Louis Gomavitz, William Hoskins, Curtis Hughes, Robert Johnson, James Parkinson; saxophones, Lloyd Bernhard, Charles Krebs, Robert Paterson; French horns, Dennis Rovero, Dudley Brown; baritone, Archie Kimpel; bass tuba, Edward Jeffrey; snare drum, Jack Bainton, Fred Compton, Phil Pollard; bass drum, Richard Farnsworth; flute, Jack Lewellen.

INTERSCHOLASTIC



Interscholastic

Interscholastic sports are those which are played by students of high schools and colleges. They are usually organized by the state or national associations of the respective sports. The purpose of interscholastic sports is to provide a fair and equitable competition for students of the same level of ability. The rules of the game are usually strict and are enforced by officials. The games are usually played during the school year and are often a part of the school's physical education program.

Interscholastic sports are usually played during the school year and are often a part of the school's physical education program. They are usually organized by the state or national associations of the respective sports. The purpose of interscholastic sports is to provide a fair and equitable competition for students of the same level of ability. The rules of the game are usually strict and are enforced by officials.

Interscholastic sports are usually played during the school year and are often a part of the school's physical education program. They are usually organized by the state or national associations of the respective sports. The purpose of interscholastic sports is to provide a fair and equitable competition for students of the same level of ability. The rules of the game are usually strict and are enforced by officials.





Butte High School Team

Interscholastic

Butte public high school won the 1931 Interscholastic Track and Field Meet with a total of 17 $\frac{1}{3}$ points. Billings high school took a close second place with 16 $\frac{1}{3}$ points. Butte and Billings also placed first and second in the half-mile relay race which does not count in the final rating.

Hamilton of White Sulphur Springs was high point man with an individual score of 12 $\frac{1}{2}$ points; Maple of Belfry was second with 11, and Duncan of Billings, third with 10.

Four state records fell before Montana high school athletes last year. Peden of Custer county broke the state record in the 100-yard dash and clipped the 220-yard dash record to 22.4 seconds. Hamilton leaped 22 feet 3 $\frac{3}{8}$ inches for a new record in the broad jump, and Eldridge of Havre broke the old high jump record at 5 feet 11 $\frac{1}{4}$ inches.

Winners of the meet received a total of 70 prizes in 14 events. In addition to the Missoula cup given the winning school temporarily, Butte received the Rotary cup awarded permanently to the school winning the Interscholastic meet. Winners of first, second, third, fourth and fifth places in all track and field events were awarded gold, silver, and bronze medals, and colored ribbons respectively. Gold, silver and bronze medals were also carried off by the winners of the three high places in the golf tournament. Gold medals were awarded to three tennis victors—singles, and each of the doubles winners.



Hamilton



Butte High School Relay Team

Libby high school jumped into an early lead in the first day with eight points. W. Williams took second in both the shot put and the discus throw for his team. The points were sufficient to place him in individual honors for the first day.

George Varnell, sports editor of the Seattle Times, pulled the trigger for the sixteenth year at the Interscholastic.

R. Saylor, Missoula, topped the 220-yard low hurdles in the phenomenal time of 25.6 seconds to beat the favorite of the day—Maple of Belfry. His time was not allowed as he knocked down two hurdles.

R. O'Malley upset R. Peden, the record-holder, in the century, winning in 10.2 seconds. R. Emerson's fifth place in that race elevated Butte high into the lead the second day which they never relinquished throughout the rest of the meet. The total amassed by the Purple Ponies—17 1/3 points—is the smallest total ever to bring a team into the Interscholastic Track and Field championship.

D. Duncan, Billings, winner of the half mile in the first race, took the lead at the start of the second lap of the mile run and held it to the end, finishing in 4 minutes 46.6 seconds. J. Rose challenged him on the home stretch but Duncan drove ahead to win.

C. Maple, Belfry, won the high hurdles in 16.2 seconds, again tying his own record for the event and repeating his victory of the year before. E. Popovich, Butte, added four points to the Purple's total with a fast stride between the sticks.

A long, apparently effortless stride which carried him past E. Miksch of Simms, on the last corner, won the second half mile race for J. Cornelius of Ronan. Exhausted by the terrific pace he had set in the first lap, Miksch could place no better than fourth.



Jacobs and Grantier

Grantier

Tennis

Bob Grantier, Missoula, by defeating Randolph Jacobs, also of Missoula, holder of the Interscholastic singles tennis title for 1930, won the 1931 championship. Grantier, champion in 1929, defeated Jacobs, 6-4 and 6-3.

Grantier and Jacobs composed the team which defeated R. Ormsbee and G. Plotts of Hamilton in the doubles contest, making Missoula the 1931 winner. The match was 6-3, 4-6, 6-3. Sixteen teams were entered in the doubles and 36 men in the singles.



Magner

Golf

G. Magner of Malta defeated R. Merhar of Butte, 1929-1930 Interscholastic golf champion, in a closely matched race for the championship golf ribbon on the State University course May 15. Magner's score for 36 holes was 161 and Merhar's 162. J. Skedd of Butte took third.

Harry Adams was in charge of golf and tennis tournaments.





Kalispell wins the theatre contest.

Little Theatre Tournament

Flathead county high school won the fifth annual Interscholastic one-act play contest for the second successive time with its presentation of "The Giant's Stair" by Wilbur Daniel Steel. Second place in the 1931 tournament went to Anaconda high school. Anaconda also placed second the previous year. Flathead county high school retained the Montana Masquers' cup which goes to the winner of three successive contests. It also received a cash award of \$25 and expenses of the cast. Silk banners were presented by the Montana Masquers to the four schools competing in the finals, including Butte public high school and Whitefish high school.

Helen Peterson of Kalispell, playing the part of Til, a mentally-deranged farm woman, in "The Giant's Stair," was chosen the best actress of the tournament. Honorable mention for their performances was accorded Marcia Shellenbarger of Anaconda, Mary Rowland of Kalispell, and Ruth Perham, Butte.

Edward Kretzer, Anaconda, in the role of Daniel, received the gold medal award as best actor, and Darrel Dickey, Kalispell, was given honorable mention.

Schools entered in the contest were: Hamilton, Missoula, Sacred Heart Academy (Missoula), Corvallis, Anaconda, Billings, Thompson Falls, Libby, Whitehall, Lewistown, Bozeman, Geraldine, Belgrade, Whitefish, Kalispell, Fort Benton, Big Timber, Butte and Belt.



Helen Peterson



Edward Kretzer



Missoula County High School Paper

Editorial Association

"The Konah" of Missoula high school was awarded a silver cup as the winning newspaper in Class A of the 1931 High School Editorial association contest. "The Kyote" of Billings high placed second, and the "Iniwa," Great Falls, third.

"The Centralite" of Girls' Central, Butte, was judged first in the Class B section for newspapers representing schools of 300-500 enrollment. The Class C award was won by "The Anticline" of Baker, and "The Crazy Mountain Monitor," published at Clyde Park, won the Class D award for mimeographed sheets. The four winners in the newspaper contest received silver cups presented by the Montana Press association and by Sigma Delta Chi and Theta Sigma Phi, journalism fraternities.

More than eighty delegates from the editorial staff of high school newspapers attended the sessions of the Montana Editorial association May 14 and 15. Copies of the Montana High School Editor, official publication of the organization, containing hints on make-up and news of the high school activities throughout the state, were distributed.

Essay Contest

Mary Asbury of Hardin won the Interscholastic essay contest conducted by the Department of English with her essay on Indians, entitled "Crows." She was awarded a scholarship by the State Board of Education upon recommendation of the State University faculty and was presented with a gold medal offered by the State University.



Hoffner

Taylor

Declamation

Ossia Taylor, representing Missoula county high school, won the girls' declamatory contest May 14, giving "The Death Disk" by Mark Twain. Harry Hoffner, Butte, placed first in the boys' division with "Submerged" by Cottman and Shaw.

Ruth Skillingstad of Powell county high school placed second in the girls' section. Eugene Manis, Hamilton, was second in the boys' declamatory contest. Judges for the final contest were Mrs. R. H. Jesse, Mrs. W. G. Bateman, and Prof. W. P. Clark.

Debate



Pace

Speck

Whitehall high school, represented by Jack Pace and Carol Speck, won the Interscholastic debate championship. They defeated the Lewistown team, composed of Bessie Harrison and Peggy Marshall. The teams used the cross examination style of debate in the rebuttal. Jack Pace was awarded the Dixon medal for the best individual debator. The teams debated the "Chain Store" question.



Jack Pace





Standing: Loftsgaarden, M. Kennedy, L. Kennedy, Hendon, Curtis, Crego, Warden, Barnes, Blakeslee, Evenson, Sanders.
Seated: Breen, Connolly, Greene, Shallenberger, Gaughan, Coe, Bravo, Borders.

Students' Interscholastic Committee

Members of the Students' Interscholastic committee are selected by members of the Faculty Interscholastic committee to co-operate with the larger group. T. C. Spaulding, dean of the School of Forestry, who has for the past 11 years been responsible for the group's activities, resigned the position in 1932. His successor was Dr. G. D. Shallenberger, chairman of the Department of Physics. He had as his duties the supervision of the housing of all visiting men contestants. Paul Bischoff, instructor in the Department of Foreign Languages, assisted him.

Charles Gaughan was chairman of the student committee and Hazel Borders acted as vice chairman.

The campus decoration group had the work of decorating the campus and directed the erection of the grove on the oval. Robert Blakeslee headed the committee. Other members were Leland Kennedy, Millard Evenson, Clyde Crego and Curtis Barnes.

House decorations committee was under the chairmanship of Owen Loftsgaarden. He had the assistance of Horace Warden, Virginia Connolly, Mary Breen and Emma Bravo.

John Curtis was in charge of publicity, with Michael Kennedy assisting. Spur and Bear Paw, sophomore honoraries, had the duty of meeting all guests and transporting them to their places of residence during the meet. Lina Greene, Spur president, was assisted by Kathryn Coe.

Bob Hendon, A. S. U. M. president, and Claget Sanders, Chief Grizzly of Bear Paw, directed the work of Bear Paw.