



CLUBS

The 1938 Sentinel presents Montana's clubs and scholastic honoraries where special subjects are given special attention. Some are built around living groups, some around special fields of study, and some around the grade curve. Based on the ideals of good service they promote good fellowship and understanding.

NORTH HALL CLUB



MARGARET McCANN,
President

WINNIE GORDON,
Vice-President

MARY FRANCES LAIRD,
Secretary



The youngsters come to college and are shoved into North Hall for a year. Each year a club is organized which elects officers to order dance programs, plan the quarterly formals, the two birthday parties and the Christmas celebration with its candle-light service. Are haunted each year by upperclass men who think their stories are new to the frosh. Much rivalry is developed among various sorority pledges who are parked in the dorm. Frosh women will long remember the subtle key jangling, the bulletin board, and the fall quarter etiquette talks. Under direction of Mrs. Theodore Brantly for thirteen years, North Hall is a thorough orienting institution for the freshmen. Biggest accomplishment is making the co-ed university wise.

SOUTH HALL CLUB

DALE OLSON,
President

HOWARD CASEY,
East Wing

PAUL WOLCOTT, JR.,
West Wing



Dear Ma: Well, here I am at college. I've been watching Peter Murphy, he's president of the students, and he hasn't a thing I haven't got. I'm living in South Hall which is almost on the campus. I was rushed by all the frats on the campus. During Rush Week it looked like free beer around here the way those fraternity men were trampling each other. They patted me on the back, showed me trophies and scrap books and told me I couldn't go wrong with them. I'm going to hold out. Today we registered and all the fun stopped. Even the people who run the school don't know how registration works, but I finally got fixed up O.K. Some guy by the name of Miller gave a talk about orientation and the guy sitting next me said it would be occidental. But most these guys seem to be a bunch of "Joe Colleges." Met some of the North Hall girls. Some of them look pretty nice. Tell Esmerelda hello for me. Tell her I'll write soon.

Your loving son,
Wilbur.

P. S. Tell Pa to send a little more money, about ten. I need it for books in Blasphemous Bulgarianism.

CORBIN HALL CLUB



PAULSON,
President

EDWARDS,
Vice-President

STROM,
Secretary

HAWKE,
Treasurer



Some Montanawomen like dormitory life so well that after they pass the North Hall stage, they just load up their collegiate junk and juggle and move about 150 feet to Corbin Hall. Hall is exclusively for upperclass women. One formal per quarter, two birthday parties, a Christmas party, a host of spasmodic entertainments make up the Corbin social calendar. Under the guidance of Mrs. F. K. Turner, life at Corbin runs smoothly. There is little sleep in the Hall this year for just across the way another dormitory (load limit 212) is being erected. It will be open next fall and the Corbinites may move. So grows the University and if you gotta grow — you gotta grow.

PHARMACY CLUB

BRALEY,
President

HOLDEN,
Vice-President

GASPERINO,
Treasurer



Membership in the Pharmacy Club includes everyone registered in the School of Pharmacy. A departmental organization, its purpose is the betterment of the school it represents. They hold meetings monthly to plan the social events for the quarter—discuss pharmaceutically interesting subjects—see motion pictures of special interest—listen to talks by prominent pharmacists. Biggest social event of last year was Rx ball. Biggest problem for individual members is how to pass the memory busting State Board examinations. The club holds an associate membership in the Montana Pharmaceutical Association.

FORESTRY CLUB



RALPH HANSEN
ROBERT MILODRAGOVICH
JAMES BALLARD
CHARLES HARDY
DICK WILLIAMS



In 1910, Forestry Club was founded at Montana's most widely acclaimed professional school. This year many improvements have arrived for club and school. The largest was, of course, ACM's endowment of approximately 20,000 acres of timber land to be used as a forestry laboratory. The club belongs to the students enrolled in the school and faculty members. Biggest social event sponsored is Forester's Ball when club members strenuously bring the great outdoors indoors for the special delight of the whole student body. Annual publication is Forestry Kaimin which has also seen many improvements this year. Give a big smoker for advertisers. Most noteworthy is the loan fund the club maintains for its financially distressed members.

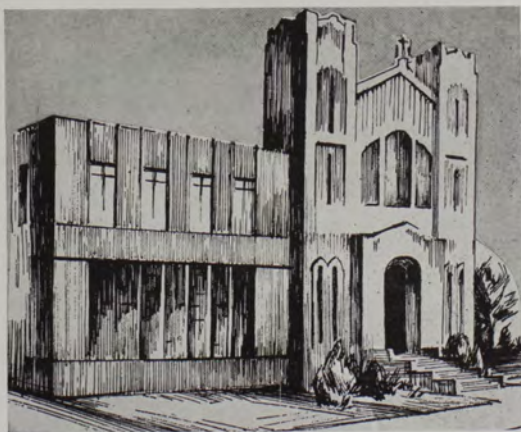
NEWMAN FOUNDATION



McDOWELL
CLAPP
VAN HAUR



HANRAHAN
LANE
CARMODY



Twenty-three years of continuous activity saw plans for the Newman Foundation perfected. Purpose — to give Catholic students a campus chapel for which plans and blue prints have been completed. A statewide campaign for funds is being conducted by the Foundation's 400 student members. On February 24, the Foundation was legally incorporated and elected Joe McDowell as first president of the Board of Trustees. On March 25, the first issue of "The Foundling," official Foundation newspaper, appeared under the editorship of Marybeth Clapp. Officers for this year were Bob VanHaur, President; John Hanrahan, Vice-President; Helen Lane, Secretary; Cliff Carmody, Treasurer.



ALPHA
KAPPA
PSI

National commercial honorary is organized for students in business administration with the purpose of promoting good fellowship—the oil in the wheels of industry. Main events are two banquets where they learn to disport themselves like businessmen and smoke those big black cigars. In the spring they have their annual stock exchange to practice business transactions. Recent news items and business trends seem to point to the wisdom of some practice. The business of the business administration club is administered by Wilmer Curtis, President; Robert Ball, Secretary.



ALPHA
LAMBDA
DELTA

National freshmen women's honorary, purposes to stimulate more scholastic activity among underclass women at Montana. The group is sponsored by Mortar Board, the upperclass women's counterpart. Membership gives distinction to the freshmen women who maintain high grades their first year. Active membership lasts throughout the sophomore year. Professor Lucia B. Mirrielees, adviser and honorary member, gives a big mid-winter tea honoring frosh women who show signs of becoming prospective members. Leaders are Kathleen Tuott, President; Virginia Strickland, Secretary.

D R U I D S



In 1922 Druid was founded at Montana to promote good fellowship between students, alumni and faculty. Especially that kind of good fellowship that leads to jobs. Student membership is limited to upperclass men which, because of the difficulty of forestry courses, makes the group naturally selective. Also limiting are the scholastic and activity requirements for membership. Leadership was in the hands of Gene Cox, President; and Bill Petersen, Secretary (also see Forestry Kaimin).



H O M E E C O N O M I C S C L U B

The home ec majors and minors are eligible for membership. Kitchen cozy girls get together to discuss such things as Knitology 12 or Methods of Needle Technique. In the "good old days" girls learned this stuff at home, but in the modern world it has all become very technical. The officers this year were Lois Hendrickson, President, and Eunice Fleming, Secretary-Treasurer. Montana's club has affiliations with state and national organizations of American Home Economics Association,



K A P P A P S I

Local chapter of the national pharmaceutical fraternity for men was founded in 1920. Membership limited to schools of pharmacy members of the American Association of Colleges of Pharmacy. Montana's group holds professional meetings to discuss pharmacist's problems. Big job this year was contacting alumni in the interests of their new building project . . . feel the need for new labs. Did much to promote Rx Ball. Regent was Bob Hall; Secretary, Don Vaupel; Treasurer, Henry Hilling.



K A P P A T A U

Kappa Tau, local scholarship fraternity, organized in 1915, admits only those juniors whose grade index is 2.1 or better. Must have 108 credits, 75 of which were earned at Montana. Big collection of grade points among members would frighten ordinary students. Traditionally tap pledges at awards convocation and initiate them at the annual spring quarter banquet. Officers for the year were Grace Nelson, President; Nan Shoemaker, Vice-president; Bob Mountain, Secretary.

M A N A G E R ' S C L U B



Newly organized this year, the Manager's Club takes for members all varsity, freshman, minor and intramural sports managers. Gives two or three dances a year to raise money to go as scholarships for its members. Biggest service is to help unite the scattered energies of managers in the various athletic departments — a service long needed. Have been useful enough this year to establish themselves as a definite and lasting organization. Governed by long-time manager Tex Brown, President, and Jimmy Miller, Secretary-Treasurer.



M A T H C L U B

Membership in the Mathematics Club is open to all students majoring in math. Group is made selective by the field from which it draws membership. Occasionally a physicist or chemist, much interested in math, is permitted to join. Basically scholastic, its big social event of the year is the annual spring banquet. Like most scientific groups, main purpose of the club is to keep abreast of its rapidly expanding field by discussion in meeting. This year's officers were Grace Virginia Haight, President, and Beatrice Cox, Secretary-Treasurer.

PHI SIGMA SOCIETY



Lambda chapter of the national biological honorary was chartered on the Montana campus in 1921. Primarily a scholastic organization, the requirements are stiff enough to keep out all but the brainiest and most scientifically ambitious. Biology rears its ugly head, both of them, at bi-weekly meetings for group discussion or talks by prominent biologists. This year's group was governed by Hervey Sannan, President, and Theodore Walker, Secretary.

PRE-MEDICAL CLUB



Organized by students preparing themselves for medical school and eventually the medical world. Have meetings to hear talks by professional men in the field and students who prepare reports on modern medicine. Like most clubs, the principle is to promote higher standards in their field of interest. Officers for the year were Fred Honeychurch, President, and Joseph Yuhas, Treasurer.

PSI CHI



National psych honorary club picks its members from the upper two-thirds (the psychological number, no doubt) of the class majoring or minoring in the subject. Last year gave the Kaimin many feature stories by conducting campus surveys on such important subjects as the size of Montana-men's heads, the average number of teeth university students have, and how are your reflexes? Could probably help the bashful fraternity man eliminate conversational difficulties with hypnosis. This year officers were James Reynolds, President, and Mabelle Gould, Secretary.

W E S L E Y C L U B



Purpose of the organization is to unite the Wesley-Methodist university students in a single group. Sunday evening socials and meetings are the most customary function of the group — most popular are the carnival dances. More elaborate are the quarterly banquets and biggest function is the annual spring trip to the Methodist lodge on Flathead Lake. Leadership of the club for this year rested with Helen Riffo.

YOU GOTTA SHOW ME



They came—they saw—they conquered about 300 Montanamen's hearts for a few days at least. It didn't last, but it was like being in heaven for a few hours with all the angels dressed in chinchilla coats and rustling silks. Fifteen carloads of girls from Stephens College, Columbia, Missouri, landed on the campus. The largest single shipment of concentrated beauty this campus has seen. For the few hours they were here, Montanamen turned themselves into gentlemen and escorted them all over the campus for a quick look at life at Montana. Result—many pins returned—many flunks come finals the next day . . . oh!



Printed and Bound by the
BESSETTE PRINTING COMPANY
of Butte, Montana

Letterpress Engraving by the
COMMERCIAL ART AND ENGRAVING COMPANY
of Los Angeles, California

Covers by the
KINGSKRAFT COVER COMPANY
of Kingsport, Tennessee

Paper by the
DILL & COLLINS PAPER COMPANY
of Philadelphia, Pennsylvania

Photography by the
ACE WOODS STUDIO
of Missoula, Montana

Special Photographic Effects by
RAY BRENNAN of Los Angeles and
FRED METLEN of Missoula

Special Art Work by
KENNY KINNEAR, JACK HOON, and LARRY LaCASSE
of Montana State University

Advisors: R. L. HOUSMAN, Editorial; E. K. BADGLEY, Financial.