





Spring
Quarter



Spring Sports

Spring Means Baseball



Walking the base line—an opposing player leaves the field.



In the dugout, Gordy McManus and Coach Larry Worky confer over statistics as Les Parks (back to camera) listens. Steve Wheeler looks on.

All Stars

Dewey Allen takes his base as Brian Cloutier prepares to step up to the batter's box. Allen, second baseman, and Cloutier, catcher, were named to the second team of the Big Sky Conference all-star baseball team.



*Batter up!
(Left-hander Brian Cloutier)
Catcher ready!
Umpire in position!
And the play begins.*

Grizzly Baseball



U of M		
1	*Washington State Crimson	9
2	*Gonzaga University	10
1	*Seattle Pacific	5
1	*Washington State Grays	0
0	*Eastern Washington	0
8	Eastern Montana College	1
3	Eastern Montana College	0
1	Western Montana College	2
9	Western Montana College	3
3	**Claremont College	4
5	**San Francisco State	12
2	**Nevada Southern	10
12	Carroll College	0
10	Carroll College	4
5	†Montana State	0
2	†Montana State	7
4	†Weber State	5
6	†Weber State	5
2	†Idaho State	14
4	†Idaho State	1
0	†Gonzaga University	10
0	†Gonzaga University	7
7	†University of Idaho	8
3	†University of Idaho	6
2	†Montana State	0
9	†Montana State	6

*Banana Belt Tournament, Lewiston, Idaho

**Las Vegas Tournament, Las Vegas, Nevada

†Conference games

From left: Row 1—Larry Slocum, Dewey Allen, Mike Hoonan, Steve Wheeler, Mike Heroax, Bob Atchison, Gordon McManus, and John Kidd.
Row 2—Bob Galbraith, Jerry Sepich, Tim Sampson, Les Parks, Brian Cloutier, Pat Shannon, Harry Allen, Jim Kenyon, and Coach Larry Works.





Harry Allen makes the catch to put out a runner from Eastern Montana.

What is the umpire up to? Is he just watching the ball or is he going out for a catch?



Track Squad Takes Second In Big Sky



*Is it hope for victory or
is it despair in defeat?*



*Carl Erland
watches his
discus sail
through the
air.*

Coming down the track to the finish are Willie Jones in the lead followed closely by teammate Ron Baines. Two runners from Eastern Washington vie for third and fourth places.



Team Results

DUAL MEETS

U of M		
100	University of Idaho	54
104	Montana State	41
102	Eastern Washington	39

INVITATIONAL

Eastern Washington:	
University of Montana	107½
Simon Fraser University	56
University of Idaho	55
Eastern Washington	47½

BIG SKY CONFERENCE CHAMPIONSHIPS

Idaho State University	96
University of Montana	86
Weber State College	44
University of Idaho	32
Montana State University	29

U of M Records

220-yard dash	Willie Jones	:20.7
880-yard run	Mick Harrington	1:51.9
440-yard inter- mediate hurdles	Tim Stark	:52.1
Long jump	Willie Jones	24-2½
Javelin throw	Mike Lyngstad	239.5
440-yard relay	Ron Baines	
	Roy Robinson	
	Bob Zins	
	Willie Jones	:41.1



Carl Thompson, baton in hand, takes off from the starting line and the relay begins.



From left: Row 1—Mick Harrington, Duane Spethman, Jim Aranow, Dick Koontz, Dave Nebel, Daryl Gadbou, Carl Thompson, Roy Robinson, Tom Gopp, Bruce Moerer, Fred Frieiz, and Coach Harley Lewis. Row 2—Wade Jacobsen, Ray Ballew, Dave Gustafson, Mike Lyngstad, Tim Stark, Ron Baines, Carl Erland, Bob Zins, Randy Hahn, Jim Clawson, Mark Doane, Marty Palagi, Steve Linie, Ray Velez, Willie Jones, and Howie Roth.

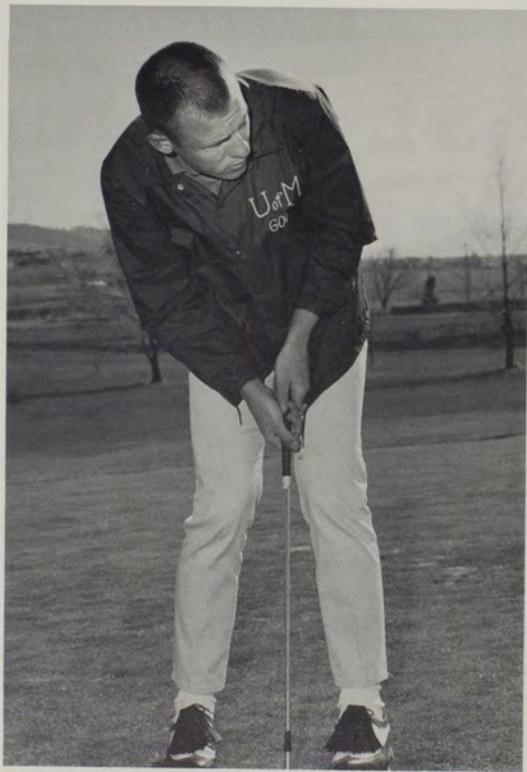
Jack Miller Named U of M Golf Coach

Jack Miller has been the pro at the University Golf Course since 1959. This year he assumed the position as coach of the U of M golf team.



JACK MILLER

RICK CARPENTER



Rick Carpenter, a Missoula sophomore, who finished sixth individually last year for Montana, was the number one golfer this year. In dual meets he won seven, lost one, and tied two. At the Eastern Montana Invitational Tournament Rick was medalist with a low score of 148 for two matches. He also finished first in the Big Sky Championship play.

Golfers Are Big Sky Champions

SEASON RESULTS

Idaho State	5
Eastern Washington	4
Whitman College	4
Gonzaga University	6½
Eastern Washington	8
Whitworth College	5
Montana State	5
Eastern Washington	2½
College of Great Falls	1
Montana State	7½

BIG SKY CONFERENCE CHAMPIONSHIPS

Final team standings:

University of Montana	918
University of Idaho	928
Weber State	944
Gonzaga University	950
Montana State	953
Idaho State	971

Individual order of finish:

1. Rick Carpenter, U of M	223
2. Jim Linke, Weber	227
3. Jim O'Connor, U of M	228
4. Glen Wysel, U of M	230



From left: Row 1—Jim Manning, Jim O'Connor, Bill Rapp, and Bob Pilote. Row 2—Garry Douglas, Larry Stewart, Skip Kopravica, Rick Carpenter, and Kits Smith.

Tennis

Women's



From left: Row 1—Lorian Anderson, Jean Gray, Coach Deanna Sheriff, Jan Comeaux, Janice Hoon, and Jane Nordlund. Row 2—Karen Holcomb, Karen Olson, Kathy Grauman, Davey Schmidt, Sue Lanman Alexander, and Pat Hartell.



SEASON RESULTS

U of M		
2	Washington State	5
5	Whitworth College	0
7	Gonzaga University	0
7	Whitman College	0
3	Eastern Washington	1
	(not a complete match)	

Men's

SEASON RESULTS

U of M		
4	Gonzaga University	5
2	Lewis & Clark College	6
0	University of Oregon	8
4	Portland State College	5
1	University of Idaho	8
1	Whitworth College	8
6	Eastern Washington	3
5	Gonzaga University	2
9	Idaho State	0
1	Utah State	8
0	Brigham Young	9
9	Montana State	0
0	University of Idaho	9
2	Whitworth College	5

In Big Sky Conference Championship play the University of Montana finished in fourth place.

Rick Ferrell, a freshman from Spokane, was U of M's top scorer.



From left: Row 1—Rick Ferrell, Rand Parker, Steve Meloy, Bud Schatz, and Coach Tom Whiddon. Row 2—Berry Ormsbee, Rod Richardson, Brian Kekich, Bob Wood, and Bill Brownell.

Men's Intramurals



Softball

1. Lagnaf
2. Sigma Phi Epsilon
3. Nads No. 1 - Sigma Nu

Tennis

SINGLES

1. Lagnaf
2. Sigma Alpha Epsilon
3. Phi Delta Theta

DOUBLES

1. Sigma Alpha Epsilon
2. Sigma Nu
3. Phi Delta Theta

Horseshoes

SINGLES

1. Delta Sigma Phi
2. Phi Delta Theta
3. Sigma Chi

DOUBLES

1. Sigma Chi
2. Pressed Ham
3. Wesley

Golf

1. Sigma Phi Epsilon
2. Lagnaf
3. Phi Delta Theta

Bill Swanton, Roger Clemens, John Van Heuvelen, and Rich Anderson take time out during the intramural golf tournament.



Track and Field

1. Sigma Nu
2. Sigma Chi
3. Lagnaf

Jay Glover, Phi Delta Theta, expresses strain as he competes in the shot put event.



Final Standings

1. Sigma Nu	3857
2. Lagnaf	3490
3. Phi Delta Theta	3442
4. Sigma Chi	3249

Awards

Pictured at the Intramural Awards Banquet are, from left: Row 1—Jeff Openden, Delbert Stroman, Bob Brown, Monti Magruder, Jim Thompson, Bryant Reber, Gary Notti, and Chuck Rutherford. Row 2—Clinton Clark, Bob Glasgow, Gary Moen, Mike Noreen, Jack Martin, Dave Ross, Dave Austin, and Ron Maheen. Row 3—Steve Nelson, Dave Youngdale, Fred Poole, Dave Kelz, Bill Waters, Mike Wood, Gary Freishour, Jim Nugent, and Dick Wilmont.



Women's Recreation Association



Tennis

1. Delta Gamma
2. Jesse Hall
3. Missoula Trojans

Track and Field

1. Jesse Independents
2. Missoula Trojans
3. Turner Synadelphic (tied)

Awards

ALL-SPORTS TROPHY

Missoula Trojans

PARTICIPATION TROPHY

Alpha Omicron Pi

SERVICE HALL OF FAME PLAQUE

Karen Frick, WRA President
(awarded for outstanding
participation)



Spring Football



The scrimmage at the end of spring football practice pitted Grizzlies against Grizzlies. The White team defeated the Copper team 16-10. These new '68 Grizzlies hope to top the 7 to 3 record of '67.

Soccer—Growing Fast



Soccer is a sport that has taken on new dimensions at the U of M. This game, U of M vs. Carroll College resulted in a Grizzly win.

SEASON RESULTS

U of M		
1	WSU	3
1	U of I	2
2	U of I	0
5	Carroll	1
3	Spokane Spokes	2
2	WSU	1
3	Carroll	0
1	Gonzaga	2

U of M won two games by forfeit.

Won 7 Lost 3

Spring Activities



Although the trees were late in budding, Pete Graf saw no reason to wear a coat as temperatures continued to rise despite the constant threat of rain.



Professors Paul Warwick and Denault Blodin of the English department took advantage of the sunshine as they held classes on the lawn near the Oval.





SPRING!!! The squirrels play hide and seek with the warming sun as Spring Quarter draws everyone and everything outside.

The tennis courts are dwarfed as the new buildings are constructed around the once secluded area of the campus. Aber Hall and the new Student Center are now where only the pine trees and Mount Sentinel used to be.



Mansfield Lecture Series

The Mansfield Endowment established educational projects and a continuing series of lectures on the campus called the "Mike and Maureen Mansfield Lectures in International Relations." This living and permanent tribute to the Mansfields originated and will remain at the U of M where he is a professor on leave. The lectures will continue to bring eminent foreign affairs authorities to the campus for public lectures and student seminars and discussions will provide U of M students with a close association with international leaders.

In January, 1968, the Senate Majority Leader spoke in the University Theater to an overflow crowd of students and faculty. He then spoke at a reservation luncheon in the Lodge and listened to student views during a question and answer session.

President Pantzer introduced Senator Mansfield as he inaugurated the lecture series.



Senator Mike Mansfield

The University Theater was filled to capacity and many students had to listen from loudspeakers outside the building.

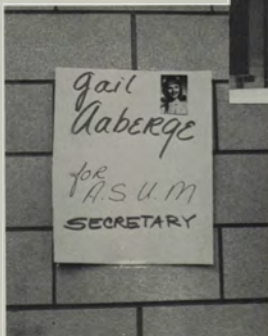
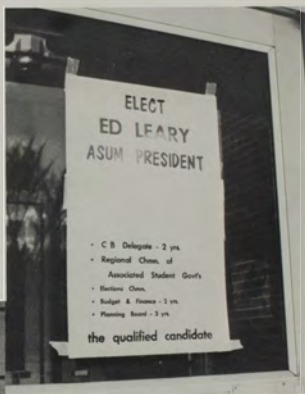


Dr. Ross Toole interpreted the student questions for the Senator during the afternoon session in the Lodge.



ASUM Elections

The ASUM elections, held in April, were emphasized by campaign posters and platform explanations. The elections followed a debate at Central Board concerning the eligibility of Sam Kitzenburg for ASUM president. After the decision to reject his nomination because of a low grade point average, Ed Leary was the sole candidate for the ASUM president position. Steve Brown was elected ASUM vice president, Gail Aaberge, ASUM secretary, and John Barsness, ASUM business manager.



This was election year for both the U of M campus and the United States. "Choice '68" was presented on campus as a poll of the student choice for U.S. President in the coming election.



The polling places were set up in the Lodge and the Liberal Arts Building. Despite the availability of the desks, only thirty per cent of the student body turned out to vote. A concerned student is helped by Jael Marchi in the picture at the bottom. At left Betty Grmoljez works in the LA building as the Spurs assisted in the validation of the student cards.



Spring Concerts



Minneapolis Symphony Orchestra



The diversity of entertainment sponsored by Program Council can be seen here. The Minneapolis Symphony Orchestra, under the excellent direction of Mr. Stanislaw Skrowaczewski, provided a rare type of musical experience as did the Ramsey Lewis Trio (pictured below). Both performed in the University Theatre and gave the building a new atmosphere with each performance.

Ramsey Lewis Trio



U of M Rodeo



Amid the excitement of bulldogging (top of page) and all the other events of the U of M Rodeo, this horse decided to refresh himself before he was called upon to perform. Miss Carol Howell was elected Miss Rodeo 1968. Mary Kitchingman and Penny Hayes were runner-ups.

Below, the clown displays his skills of attracting the attention of a Brahma bull. This bull was responsible for many broken fences during the three nights of the rodeo and his determination to throw any rider and escape from the arena made a definite impression on the expectant audience.





Spurs

After selection by the members of Spurs and Bear Paws, the hopeful candidates gathered for an SOS at Main Hall to hear the decisions of who would be honored by being chosen as a Spur or Bear Paw for 1968-69. Left, Marsha McElwain announces the new Spur members.



Bear Paws

Linda Overcast and John Meyers took part in the ceremonies as they accepted trophies and read the list of those who had been selected.

The Bear Paw aspirants are asked to do some work such as painting Hello Walk. These Bear Paw hopefuls work hard to make the sidewalk look as freshly painted as possible. This helps to continue the tradition of Hello Walk where all who pass each other must greet the other person be that person an acquaintance or a stranger.





Margaret Don Tigny (left) works hard for the KKGs as she stacks cans of all brands in a double stack. Above, the AOHs, led by Jindy Stratton and Anita Schroeder, won the Canathon with a 28-foot stack. This was all accomplished in an hour and 45 minutes.

Theta Chi Canathon

The Sigma Alpha Epsilon fraternity sponsors an annual SAE Olympics at which sororities compete for various trophies. The occasion requires skills in everything from pie-eating to rope-climbing. All the sororities turn out for the competition with signs and coaches to help them score a victory.

The sorority girl (below) learns that the way to the top is by strength and endurance, while the member, left, tries to eat her way to victory. Both are cheered on by their houses who use signs and songs to boost their spirits.



SAE Olympics



Many U of M students and faculty members assembled on the Oval for a Silent Vigil in respect for Dr. Martin Luther King Jr. after his assassination in April.



Dr. Martin Luther King Silent Vigil



Tent City, erected in the Oval and sponsored by interested students and faculty members, was a movement in sympathy for the Poor Peoples' March on Washington, D.C. Participation was encouraged through a teach-in, a discussion on involvement of women in the meetings, and a two-day fast. About 50 people camped on the Oval despite Missoula's unpredictable Spring weather.

Tent City had much cooperation from University officials. The city greeted two buses of people who were going to Resurrection City in Washington, D.C., and treated them to lunch by contributions received at the table pictured at the left. From left, Michael Crowley, Gay Darkenwald, Dave Thomas, Celeste Craig, Bob Gesell, and Dan Struchman were just a few of the interested students.

Tent City



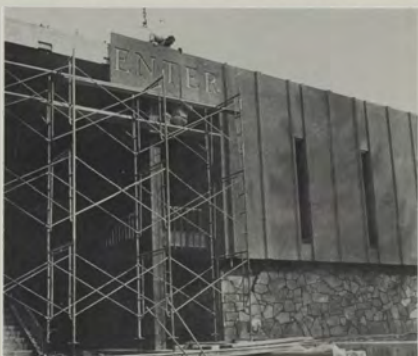


Cementing the "M."

Two Spring activities which indirectly involved the U of M student body were the cementing of the "M" on Mount Sentinel and the River Boat Races. The "M" was changed from a rock structure to a huge cement structure. This involved many students and construction workers as they dug out the soil to anchor the cement and then poured the cement from trucks that were driven to the fireline on Mount Sentinel.

The river boat races were part of the Missoula May Street Spectacular Days. Canoes, row boats and rubber rafts were just a few of the classifications under which any interested contestant could enter. The races were held on Saturday and many who participated found the Clark Fork River very chilly.

Students will be able to "enter" the University Center soon as it is due for completion this fall. It will provide facilities for student activities.



River Boat Races



Matrix Table



The Matrix Table selects one woman from each class who they feel has contributed the most to the University during the past year. The 1967-68 women honored at the annual Matrix Table dinner were (from left)—Trudy Nottingham, Ann Akin, Kathy Mariana, and Ruth Silvius. Each of these women prove that the University system combined with extra interest, talent, and vigor produces a quality of character that is admired by many.

Spring Lecturers

Denault Blouin is only one of the U of M instructors who take advantage of the oval and bold class outside. In the Spring, this is a familiar sight.





Kappa Psi

"Car Bash"

One of the most unique money raising projects at U of M was the Kappa Psi "Car Bash." The pharmaceutical honorary used a car as a target for a sledge hammer swung by any frustrated student who wanted to eliminate his "end-of-the-quarter tensions."

The car was totally demolished in an hour and although it was driven into the Baby Oval, it had to be towed away.

