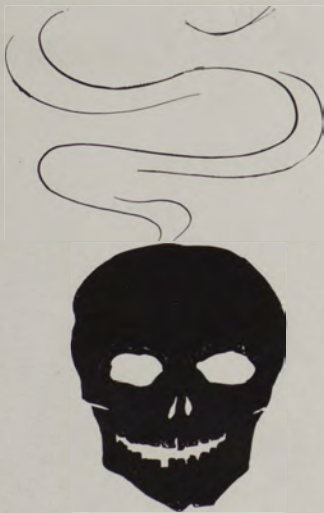




FRATERNITIES

545







S i g m a N u

Gamma Phi Chapter

Established January, 1905

FRATRES IN URBE

FRANK E. BONNER
JAMES H. BONNER
JOHN M. EVANS
THOMAS E. EVANS
MASSEY S. McCULLOUGH
BERNIE F. KITT
EARL F. HUGHES

FLOYD HARDENBURGH
ELMER JOHNSON
JOHN M. LUCY
HYLEN L. SMURR
RALPH W. SMITH
F. HAROLD SLOANE
LIEUT. S. A. HARRIS

FRATRES IN FACULTATE

JAMES B. SPEER

FRATRES IN UNIVERSITATE

1912

DANIEL M. CONNER

ARTHUR W. O'ROURKE
HOLMES MACLAY

1913

CECIL F. DOBSON
ROYAL D. SLOAN

OWEN D. SPEER
CARL E. CAMERON

1914

DONOVAN WORDEN
GEORGE T. ARMITAGE
EARL L. SPEER
CLIFFORD DAY

LARUE SMITH
STEWART NICHOLSON
CHARLES E. DOBSON
EDWARD SIMPKINS

1915

RALEIGH GILCHRIST
KENNETH WOLFE
ROBERT S. BORLAND
JOSEPH C. TOPE

FREDERICK RICHTER
DONALD B. YOUNG
OBERT A. PEPPARD
HARRY G. ADE



S I G M A N U

Founded at Virginia Military Institute, 1869

CHAPTER ROLL

ALPHA—Virginia Military Institute	GAMMA BETA—Northwestern University
BETA—University of Virginia	GAMMA GAMMA—Albion College
EPSILON—Bethany College	GAMMA DELTA—Stevens Institute of Technology
ETA—Mercer University	GAMMA UPSILON—Lafayette College
THETA—University of Alabama	GAMMA ETA—Colorado School of Mines
IOTA—Howard College	GAMMA ZETA—University of Oregon
KAPPA—North Georgia Agricultural College	GAMMA THETA—Cornell University
LAMBDA—Washington and Lee University	GAMMA IOTA—State College of Kentucky
MU—University of Georgia	GAMMA KAPPA—University of Colorado
NU—Kansas State University	GAMMA LAMBDA—University of Wisconsin
XI—Emory College	GAMMA MU—University of Illinois
PI—Lehigh University	GAMMA NU—University of Michigan
RHO—Missouri State University	GAMMA XI—State College of Mines and Metallurgy (Mo.)
SIGMA—Vanderbilt University	GAMMA OMICRON—Washington University
UPSILON—University of Texas	GAMMA PI—University of West Virginia
PHI—Louisiana State University	GAMMA RHO—University of Chicago
PSI—University of North Carolina	GAMMA SIGMA—Iowa State College
BETA BETA—DePauw University	GAMMA TAU—University of Minnesota
BETA ZETA—Purdue University	GAMMA UPSILON—University of Arkansas
BETA ETA—University of Indiana	GAMMA PHI—University of Montana
BETA THETA—Alabama Polytechnic Institute	GAMMA CHI—University of Washington
BETA IOTA—Mount Union College	GAMMA PSI—Syracuse University
BETA MU—State University of Iowa	DELTA ALPHA—Case School of Applied Science
BETA NU—Ohio State University	DELTA BETA—Dartmouth College
BETA XI—William Jewell College	DELTA THETA—Lombard University
BETA RHO—University of Pennsylvania	DELTA GAMMA—Columbia University
BETA SIGMA—University of Vermont	DELTA DELTA—Pennsylvania State College
BETA TAU—North Carolina A. and M. College	DELTA ZETA—Western Reserve University
BETA UPSILON—Rose Polytechnic	DELTA EPSILON—Oklahoma University
BETA PHI—Tulane University	DELTA IOTA—Washington State College
BETA CHI—Leland Stanford Jr. University	
BETA PSI—University of California	
GAMMA ALPHA—Georgia School of Technology	

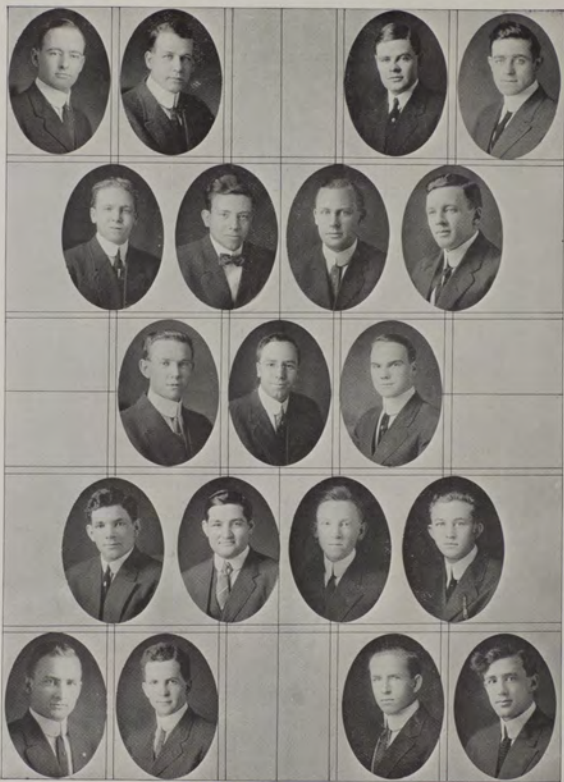
ALUMNI CHAPTERS

Birmingham	Louisville	Davenport
San Francisco	Lexington	Toledo
Pueblo	Shelbyville	Portland
Denver	Montgomery (Ala.)	Pittsburgh
Dallas	Pine Bluff (Ark.)	Nashville
Seattle	Little Rock	Baton Rouge
Wheeling	Washington	Boston
Milwaukee	Columbia (Mo.)	Detroit
Salisbury (N. C.)	St. Louis	Kansas City
Canton (Ohio)	New York City	Minneapolis
Columbus	Charlotte	Raleigh
Cleveland	Atlanta	Wilmington (N. C.)
Des Moines	Chicago	Philadelphia
	Indianapolis	



Sigma Chi







S i g m a C h i

Beta Delta Chapter

Established September, 1906

FRATRES IN FACULTATE

PROF. FREDERICK C. SCHEUCH PROF. W. D. HARKINS
MR. ROBERT H. CARY

FRATRES IN URBE

DR. J. G. RANDALL	WILLIAM O. DICKINSON
GILBERT HEYFRON	WALTER H. M'LEOD
JOSEPH STREIT	FRENCH T. FERGUSON
HUGH M. FERGUSON	JOHN D. JONES
R. KING GARLINGTON	FRED E. BUCK
THOMAS M. FARRELL	EDGAR G. POLLEYS
WILLIAM G. FERGUSON	ROY W. WINTON
GILBERT J. REINHARD	HUGH FORBIS
	WALTER MARSHALL

FRATRES IN UNIVERSITATE

1912

ERNEST E. HUBERT	DUDLEY D. RICHARDS
MILTON MASON	E. P. KELLY
CLARENCE FORBIS	E. A. WINSTANLEY

1913

GEORGE P. STONE	ROSCOE W. WELLS
PAUL GERVAIS	

1914

NAT S. LITTLE	PATRICK T. MCCARTHY
WILLIAM WAYNE JOHNSON	PETER RONAN
MALCOLM WADE PLUMMER	PAUL L. DORNBLASER
FRED H. WHISLER	

1915

COBURN F. MADDOX	LEWIS HUNT
JAMES C. HAINES	MERRITT M. OWSLEY



ACTIVE CHAPTERS

ALPHA—Miami University
 BETA—University of Wooster
 GAMMA—Ohio Wesleyan
 EPSILON—George Washington University
 ZETA—Washington and Lee University
 ETA—University of Mississippi
 THETA—Pennsylvania College
 KAPPA—Bucknell College
 LAMBDA—Indiana University
 MU—Denson University
 XI—DePauw University
 OMICRON—Dickinson College
 RHO—Butler College
 PHI—Lafayette College
 CHI—Hanover College
 PSI—University of Virginia
 OMEGA—Northwestern University
 ALPHA ALPHA—Hobart College
 ALPHA BETA—University of California
 ALPHA GAMMA—Ohio State University
 ALPHA EPSILON—University of Nebraska
 ALPHA ZETA—Beloit College
 DELTA CHI—Vashburn University
 ZETA PSI—University of Cincinnati
 THETA THETA—University of Michigan
 LAMBDA LAMBDA—State University of Kentucky
 MU MU—West Virginia University
 XI XI—University of Missouri
 TAU TAU—Washington University
 ALPHA THETA—Massachusetts Institute of Technology
 PHI PHI—University of Pennsylvania
 ALPHA ETA—University of Iowa

ALPHA IOTA—Illinois Wesleyan
 ALPHA LAMBDA—University of Wisconsin
 ALPHA NU—University of Texas
 ALPHA XI—University of Kansas
 ALPHA OMICRON—Tulane University
 ALPHA PI—Albion College
 ALPHA RHO—Lehigh University
 ALPHA SIGMA—University of Minnesota
 ALPHA UPSILON—University of Southern California
 ALPHA PHI—Cornell University
 ALPHA CHI—Pennsylvania State College
 ALPHA PSI—Vanderbilt University
 ALPHA OMEGA—Leland Stanford Jr., University
 BETA GAMMA—Colorado College
 BETA DELTA—University of Montana
 BETA EPSILON—University of Utah
 BETA IOTA—University of Oregon
 BETA ZETA—University of North Dakota
 BETA ETA—Case School of Applied Science
 BETA THETA—University of Pittsburgh
 DELTA DELTA—Purdue University
 ZETA ZETA—Central University of Kentucky
 ETA ETA—Dartmouth
 KAPPA KAPPA—University of Illinois
 RHO RHO—University of Maine
 NU NU—University of Columbia
 OMICRON OMICRON—University of Chicago
 UPSILON UPSILON—University of Washington
 PSI PSI—Syracuse University
 OMEGA OMEGA—University of Arkansas

ALUMNI CHAPTERS

Atlanta, Georgia
 Baltimore, Maryland
 Boston, Massachusetts
 Bloomington, Illinois
 Charleston, West Virginia
 Chicago, Illinois
 Cincinnati, Ohio
 Cleveland, Ohio
 Columbus, Ohio
 Dayton, Ohio
 Denver, Colorado
 Detroit, Michigan
 Duluth, Minnesota
 Evanston, Illinois
 Hamilton, Ohio

Harrisburg, Pennsylvania
 Indianapolis, Indiana
 Kansas City, Missouri
 Lincoln, Nebraska
 Little Rock, Arkansas
 Los Angeles, California
 Louisville, Kentucky
 Manila, Philippine Islands
 Milwaukee, Wisconsin
 Memphis, Tennessee
 Missoula, Montana
 Madison, Wisconsin
 Nashville, Tennessee
 New Orleans, Louisiana
 New York, New York

Oklahoma City, Oklahoma
 Philadelphia, Pennsylvania
 Pittsburg, Pennsylvania
 Peoria, Illinois
 Phoenix, Arizona
 Portland, Oregon
 San Francisco, California
 Salt Lake City, Utah
 Seattle, Washington
 Springfield, Illinois
 St. Paul-Minneapolis, Minn.
 St. Louis, Missouri
 Toledo, Ohio
 Washington, D. C.



Iota
Nu







I o t a N u

Local Organized January, 1906

FRATRES IN URBE

RAY HAMILTON
MARSHALL HARNOIS

W. BURTON SMEAD
J. CHARLES JOHNSON

WARREN E. THIEME

FRATERS IN UNIVERSITATE

1912

FRED E. THIEME

D. C. WARREN

1913

R. L. JOHNSON

J. B. TAYLOR

1914

HUGH SATTERTHWAITE
CARL DICKEY

JOHN SHEEDY
W. D. VEALEY

1915

GEORGE C. M'GUIRE
OTIS BAXTER

MILLARD F. NESBIT
BERT S. KELLY

EDWIN STANLEY





Mu Sigma Epsilon

Engineering Local
Organized 1909

Colors: Deep Blue and Gold

FRATRES IN URBE

CHARLES F. FARMER
HARRY D. MACLAY

RALPH SMITH
CLARENCE H. BUCK

PETER HANSEN

FRATRES IN UNIVERSITATE

1912

FRED E. THIEME

MILTON MASON

ERNEST W. FREDELL

1913

ROYAL D. SLOAN

R. L. JOHNSON

CECIL DOBSON

1914

EDWARD SIMPKINS
FREDERICK RICHTER

WADE PLUMMER
F. H. WHISLER

H. H. KUPHAL

1915

J. E. MONTGOMERY



Tau Kappa Alpha

National Honorary Fraternity for those participating in Debate and
Oratory. Founded at DePauw

MONTANA STATE CHAPTER

MEMBERS

GEORGE F. REYNOLDS	CLYDE A. DUNIWAY
ARBIE E. LEECH	C. H. BOWMAN
D. CREGIER WARREN	R. J. MILLER
ROBERT C. LINE	CARL DICKEY
MILLARD F. BULLERDICK	HARRY FISHER SEWELL

ARTHUR O'ROURKE

CHAPTER ROLL

ACTIVE STATE CHAPTERS

COLORADO—Chapter center, University of Denver.	TENNESSEE—Chapter center, Vanderbilt University.
INDIANA—Chapter center, DePauw University. Colleges included: Wabash, University of Indiana, Butler.	VIRGINIA—Chapter centers, Randolph-Macon, Richmond Colleges.
IDAHO—Chapter center, University of Idaho.	UTAH—Chapter center, University of Utah.
MASSACHUSETTS—Chapter center, Harvard University.	GEORGIA—Chapter center, University of Georgia.
MONTANA—Chapter Center, University of Montana.	NORTH CAROLINA—Chapter center, University of North Carolina.
NEW YORK—Chapter center, University of New York.	WASHINGTON—Chapter center, University of Washington.
OHIO—Chapter centers, Miami University and University of Cincinnati.	WISCONSIN—Chapter center, Lawrence College.