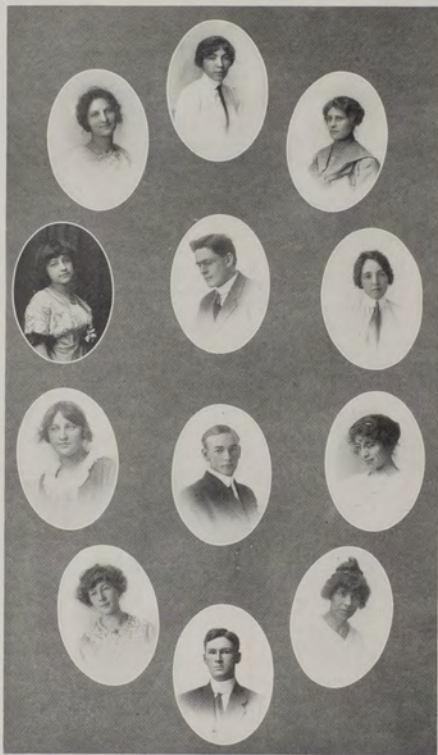


NINETEEN FIFTEEN



ORGANIZATIONS

THE SENTINEL

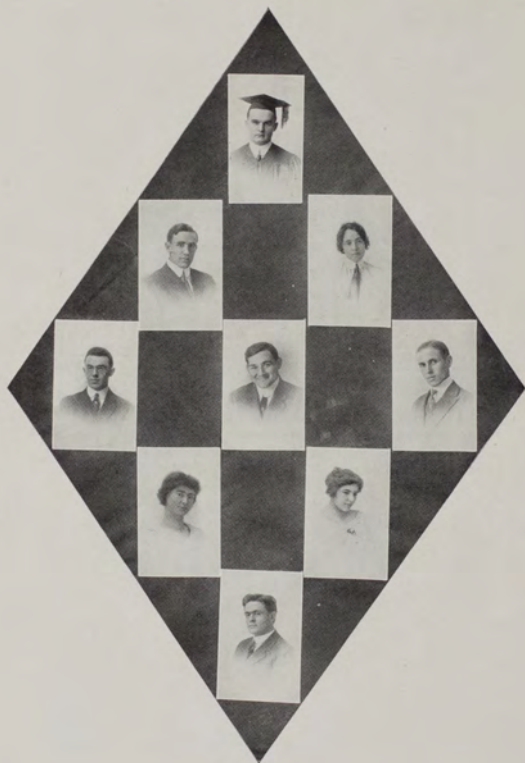


# NINETEEN FIFTEEN

## 1915 Sentinel

LUCIUS ELDER FORBES	Editor-in-Chief
BERNICE SELFRIDGE	Associate Editor
GRACE LEARY	Assistant to the Editor
MERLE KETTLEWELL	Literary Editor
GUSSIE GILLILAND	Organizations
CORA HARMON	Calendar
OTIS BAXTER	Athletic Editor
RUBY JACOBSON	Locals
DIANA ULIN	Assistant to the Editor
HAZEL LYMAN	Assistant to the Editor
JESSIE RAILSBACK	Assistant to the Editor
WALTER LINCOLN CONWAY	Business Manager

THE SENTINEL



## NINETEEN FIFTEEN

# A . S . U . M .

## EXECUTIVE COMMITTEE

---

### PRESIDENT

P. L. DORNBLASER . (Till January)  
RAYMOND WIEDMAN . (Since January)

VICE PRESIDENT  
ESTER BIRELY

SECRETARY  
MABEL LYDEN

MANAGER  
GEORGE ARMITAGE

DELEGATES AT LARGE  
CARL CAMERON  
MERRIT OWSLEY  
BERNICE SELFRIDGE  
E. B. CRAIGHEAD, JR.  
L. E. FORBES

## THE SENTINEL

### Alumni Association

---

#### OFFICERS

President	.	.	.	.	MRS. MASON
Secretary	.	.	.	.	MISS MARY ELROD
Treasurer	.	.	.	.	MRS. HELEN HARRIS
Acting President	.	.	.	.	MISS WINIFRED FEIGNER

---

The association was founded for the general betterment of the University of Montana. It maintains a keen interest in all the University functions and has at times proved of great service. This association helps to promulgate the motto of the University: "The University of Montana; it must prosper."

NINETEEN FIFTEEN

THE UNIVERSITY OF MONTANA  
IT MUST PROSPER

# Weekly Kaimin

VOL. X

UNIVERSITY OF MONTANA, MISSOULA, SEPTEMBER 25, 1915.

NO. 1

## ENROLLMENT GREATEST EVER

WINNING TEAM  
IS PREDICTED

DUAL DEBATE  
WITH GONZAGA

VARSITY SHOW  
AT STATE FAIR

Twenty Professors  
Added to Faculty

NEW COACH FROM UNIVERSITY  
OF PENNSYLVANIA  
OPTIMISTIC.

MONTANA WILL MEET SPOKANE  
COLLEGE IN FEBRUARY—  
OTHER CONTESTS.

EXCELLENT EXHIBIT IS AN-  
RANGED AT HELENA BY  
FACULTY MEMBERS.

Six Hundred Students in Varsity This  
Year--Two Hundred and Fifty-  
Two Now at Their Studies.

DR. HEILMAN PLEASED

A Dual Debate will be held with the  
Spokane University by the University  
of Montana in February. Arrangements

The University of Montana will be  
represented at the state fair at Hel-  
ena by a splendid exhibit. The ex-

### FIRST SEMESTER

KATHRYN SUTHERLIN

GRACE MATHEWSON

MERLE KETTLEWELL

JAMES BROWN

A. A. CLAPPER

ALVA BAIRD

BRUCE HOPPER

### EDITOR

### ASSOCIATE EDITOR

### SOCIETY

### SPORTS

### BUSINESS MANAGER

### ASSOCIATE MANAGER

### CIRCULATION MANAGER

### SECOND SEMESTER

MERLE KETTLEWELL

PERCY N. STONE

GRACE MATHEWSON

HAROLD LANSING

A. A. CLAPPER

J. J. ECTOR

BRUCE HOPPER

### REPORTERS

M. LYDEN

G. SANER

W. FRYE

H. HAWK

W. LONG

G. WATKINS

B. SELFRIDGE

J. TOPE

W. LONG

E. PRESCOTT

E. STEVENSON

R. JACOBSON

H. HAWK

J. FRYE

M. LYDEN

P. TEMPLETON



## THE SENTINEL

### Dramatic Club

E. PAT KELLEY  
THOMAS BUSH

PRESIDENT  
Manager

#### MEMBERS

ESTHER BIRELY  
STELLA DUNCAN  
MERLE KETTLEWELL  
BESS RHODES  
DIANA ULIN  
EVELYN STEVENSON  
ARCHIE HOEL  
EARL SPEER  
DONALD YOUNG  
MERRIT OWSLEY  
E. P. KELLEY  
COLIN CLEMENTS  
THOMAS BUSH  
GREGORY POWELL  
AMY BRUSVEN  
ELEANOR LITTLE



NINETEEN FIFTEEN

Writers Club

MERLE KETTLEWELL

CARL GLICK

G. F. REYNOLDS

GEORGE ARMITAGE

GUSSIE GILLILAND

CARL DICKEY

G. F. REYNOLDS

BERNICE SELFRIDGE

# THE SENTINEL

## Orchestra

DIRECTOR

DE LOSS SMITH

### VIOLINS

JAHR  
LYDEN  
SHUNK  
CLAPPER  
BROWN  
OWENS  
BOL

### CELLO

FULLERTON

### CLARINET

LONG

### CORNET

WILSON  
WENZEL

### TROMBONE

ERE  
HOEL

## NINETEEN FIFTEEN

### Women's Glee Club

#### SOLOISTS

LOUISE WEBBER  
TINY PRITCHARD  
GUSSIE GILLILAND  
BEATRICE TABOR  
GERTRUDE SKINNER

#### SOPRANOS

KATHRYN SUTHERLIN  
ALICE HARDENBURGH  
CARROL O'DONNELL  
KATE MURR  
HELEN RUDD  
GRACE MATHEWSON  
FLORENCE LEMMON  
MARY BBOWN  
IRENE MURRAY  
EUNICE DENNIS  
ESTA HOLMES  
EVELYN THOMAS  
IRENE SHOPE  
LELIA LOGAN

#### ALTOS

DIANA ULINE  
RUBY JACOBSON  
VERA PRIDE  
EVELYN STEVENSON  
LUCILE THOMPSON  
HAZEL HAWK  
FLORENCE SHULL  
HELEN SHULL

## THE SENTINEL

# Hawthorne

President	CHARLES BAUER
Vice President	FLORENCE LEMMON
Secretary	MARION DUNCAN
Treasurer	HELEN SMITH

### MOTTO

*"Ladies and Gentlemen: On behalf of the management I am requested to announce, 'Hawthorne shall not meet tonight.'"*

## NINETEEN FIFTEEN

# Pharmacy Club

### OFFICERS

President	LOUIS JAMES FISCHL
Vice President	CLAUDE SIMPKINS
Secretary	FLORENCE INGHAM
Treasurer	RAYMOND COLLINS

### MEMBERS

ANGEVINE  
SHEEDY  
ERB  
DISBROW  
INGHAM  
COLLINS  
FISCHL  
FISKE  
PARKHURST  
COOK  
JOHNSON  
WELLS  
PROF. MOLLET  
SIMPKINS

## THE SENTINEL

### Y. W. C. A.

President	RUBY JACOBSON
Vice President	GUSSIE GILLILAND
Secretary	VERA PRIDE
Treasurer	GRACE MATHEWSON