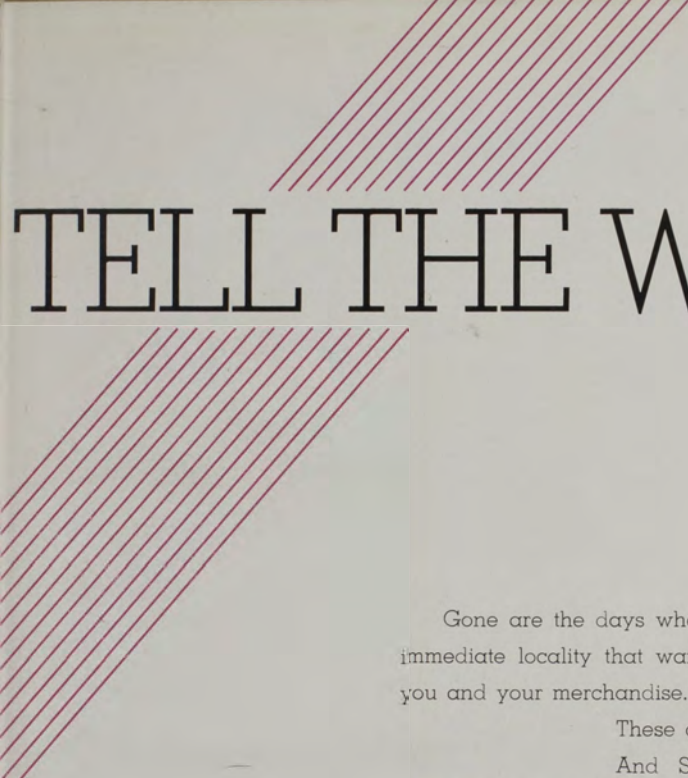




DON'T TELL
ME

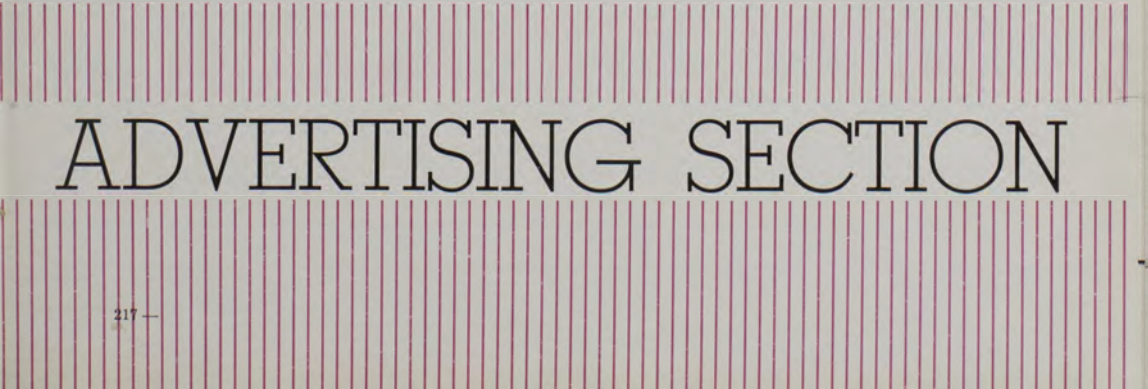


TELL THE WORLD!

Gone are the days when it was only your immediate locality that wanted to know about you and your merchandise.

These are national days —

And SENTINEL SERVICE, now truly national, carries your message to the spots where contracts and opportunities are dangling.



ADVERTISING SECTION

TABLE OF CONTENTS

According to Cities

The staff wishes to express its gratitude for the splendid financial support given them by the Montana businessmen who are among our advertisers. Their support of this annual is but one indication of their interest in developing our state and its institutions—an interest which can be shared by us who are hereby benefited, if we in turn will give our support to them.

Anaconda	248
Butte	239-241
Great Falls	242-244
Hamilton	245
Kalispell	246-247
Missoula	219-238
National	249-255
Stevensville	245

THE MERCANTILE *Marches ON!*

TODAY . . . as back in 1865, a business with ideas as young as this morning's newspaper . . . a business timed to the needs of today, awake and alert to the trends of tomorrow . . . an organization pervaded by an unceasing and increasing determination for improvement, a determination to leave no stone unturned in the effort to make the MERCANTILE the best place for you to trade. Today, as for almost a century, the name MISSOULA MERCANTILE CO. stands for dependable quality, friendly, courteous service and fair prices.

Everybody's store for Everything.

THE MISSOULA MERCANTILE CO.
Missoula Montana

Best Wishes
and
Good Luck



STAN SMART

Texaco Products
Corner Sixth and Higgins

We Specialize in . . .

FISH
OYSTERS
POULTRY

BOURDEAU MEAT MARKET

W. Werner, Prop.
837 S. Higgins

Phone 3766

Where Quality and Service Is the Keynote

for DEPENDABILITY
in AUTOMOBILE TRANSPORTATION

Whether New or Used
SEE—
NYBO & COMPANY, Inc.
Your Friendly STUDEBAKER Dealer

Paints, Varnishes, Glass, Wallpaper, Sash
and Doors.

W. P. FULLER & COMPANY

Fuller Paints — They Last

Mallory
Portis

HATS . . .

F
O
R
E
S
T
E
R
S

Yandt's
MEN'S WEAR

. . . SHOES

E
Q
U
I
P
M
E
N
T

Florsheim
Crosby-Square

Kuppenheimer Clothes

Jayson Shirts

LIVE

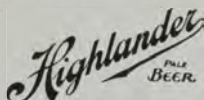
E
L
E
C
T
R
I
C
A
L
L
Y

THE MONTANA POWER COMPANY

ON PICNIC DAYS . . .

They always call for Dutch Lunches and cold BEER.

MAKE YOUR BEER



MISSOULA BREWING COMPANY

HAUGEN STUDIO

Portrait and
Commercial

PHOTOGRAPHY

"Everything Photographic"

CAMPUS CLOTHES
COAST-TO-COAST

FIRST IN STYLE!
FIRST IN VALUE!

where a nation SHOPS and SAVES

Penney's

wear PENNEY'S clothes and look your best—

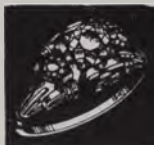
COMMUNITY
THEATRE

An Independent Theatre
Thomas C. Grindley and Sons

Ride the City Buses Free to and
from the Theatre—

Combination Theatre and
Bus Tickets—only 25c

"A SAVING AND A
CONVENIENCE"



Fine Diamonds
Reliable Watches

KITTENDORFF'S
7 Arcade Bldg.

The Safety of Your Investment with
This Association is Now Insured up to
\$5000 by an Agency of the United States
Government . . .

WESTERN MONTANA BUILDING & LOAN
ASSOCIATION

LOANS . . .
6 per cent Amortized Plan

Best Wishes
to a greater SENTINEL and
a greater OLDSMOBILE for
1938

HAGENS MOTOR
COMPANY

125-129 W. Broadway

Mary Moore
SHOP



Garments of Refinement

Missoula :: :: Helena

ANACONDA COPPER MINING COMPANY

Lumber Department

Mills at Bonner and Milltown, Montana



Manufacturers and Wholesale Distributors

— of —

PONDEROSA PINE and MONTANA FIR
and LARCH LUMBER



We make a specialty of sixteen-inch mill wood that can be favorably distributed in a radius
of about one hundred miles from our mills.

SHOP
at
WARDS
and
SAVE



MONTGOMERY WARD
& COMPANY

Missoula

Compliments of
**GOLD
MEDAL**



BUTTER, CHEESE
ICE CREAM

THE FIRST NATIONAL BANK OF MISSOULA

— Officers and Directors —

A. R. JACOBS, President

THEODORE JACOBS, Vice President

E. R. ANDERSON, Cashier

S. J. COFFEE

HOWARD TOOLE

WALTER L. POPE

COMPLIMENTS

of the

F. W. WOOLWORTH COMPANY

DIXON & HOON SHOE COMPANY

Featuring America's most famous lines of footwear —

For Men - - -

BOSTONIANS

NETTLETONS

For Women - - -

RICE-O'NEILL

RHYTHM STEP

THE PETERSON DRUG COMPANY

is

"A good place to trade"

WILMA • RIALTO • LIBERTY

Your FOX THEATRES in Missoula



STOP 'N' SHOP

Fancy

GROCERIES - FRUITS

VEGETABLES - MEATS

Bowl For Health and Fun

at the

IDLE HOUR BOWLING
ALLEYS



119 East Broadway



YOU ARE
INVITED

To make our
store your meet-
ing place.

Sporting and Fishing Goods

BARTHEL HARDWARE

Between Higgins and Post Office

JEWELRY - - - - - there is GENUINENESS
about a Jewelry Store purchase that lasts
and gives perfect satisfaction.

B. & H. JEWELRY COMPANY

Corner Higgins and Main Streets

BOOK LOVERS WILL FIND THEIR
BEST SELECTIONS

— AT —

Montana's finest bookstore

THE OFFICE SUPPLY
COMPANY

Missoula

Montana's oldest bookstore

HELENA OFFICE
SUPPLY CO.

Helena

THE SPORT SHOP

— :: —

home of
SOCIETY
BRAND
CLOTHES

— :: —

THE COLLEGE SHOP

AT ALL TIMES - - -

A HEARTY WELCOME TO
U of M students and alumni
from

"Montana's most Modern Drug Store"

THE MISSOULA DRUG COMPANY

Oakley E. Coffey '23

- - - - - ASK YOUR FRIENDS!

They'll tell you that our modern cleaning
equipment, using duPont "Triclene,"
will assure you of scientific
cleaning.

NEW METHOD CLEANERS & DYERS

PHONE 4737

211 East Broadway

Opposite Post Office

STUDENTS' HEADQUARTERS

For Their

FUN - REST - GOSSIP - EATS

and

SCHOOL SUPPLIES



ASSOCIATED STUDENTS' STORE



TRAVEL
BY
BUS

East to Minneapolis, Chicago and the Atlantic seaboard, or West to Spokane, Seattle, and California — travel the famed NORTHERN SHORT ROUTE, relaxed and comfortable aboard a modern bus. The Washington Motor Coach System offers you low fares, time-saving schedules, liberal stopover privileges, and generous baggage allowances.

WASHINGTON MOTOR
COACH SYSTEM

FREQUENT LOCAL SERVICE
UNION BUS DEPOT

118 West Broadway

Missoula

Phone 3513

TROUBLE

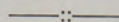
Is Our Business

Whether in Your Home

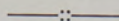
or

in Your Car

RADIO



Car Installations



SYLVANIA TUBES

BERT RYAN RADIO
COMPANY

Liberty Theatre Bldg.

Phone 3240

MISSOULA'S Super Garage and Service Station



Sales and Service

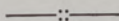
FISHER-KRAABEL COMPANY

301 West Broadway

Schramm-Hebard Meat Company

CHOICE MEATS

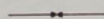
Poultry, Fish and Oysters



Phone 3191

417 North Higgins Avenue

McKAY ART
COMPANY



Kodak Finishing

Pictures and Frames

Cameras and Supplies

Books - Gifts - Portraits

WE FURNISH YOUR
HOME COMPLETE—

Furniture Bedding

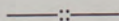
Draperies Crockery

Hardware Radios

Refrigerators Toys

J. M. LUCY & SONS,
Inc.

HEAVLIN
Sheet Metal Works



Johns-Manville Roofing

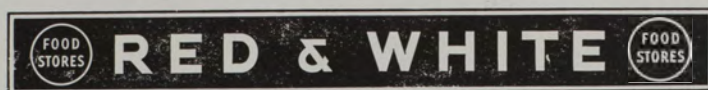
:- Greetings :-

The

Sunbeam Furnaces and Fans

MISSOULA GAS &
COKE COMPANY

Seventeen Years of Better Merchandising as a Group of
Voluntary Independent Merchants gives the...



...Prestige and Public Confidence. These RED & WHITE
merchants have confidence in the future of Montana and lend
their support to its institutions.



Independent
Home-Owned
OWNER-OPERATED



THE COFFEE PARLOR

... Distinctive
... Modern
... Air-Conditioned

"Always The Best"

Compliments of DICKINSON PIANO COMPANY

Higgins Ave.



Radios - Pianos - Refrigerators

BARNETT OPTICAL COMPANY

EYESIGHT SPECIALISTS
Any Optical Repair

129 E. Broadway

Phone 2560

MISSOULA MOTORS, Inc.

Broadway Opposite Courthouse

NASH - LAFAYETTE Distributors
for Western Montana

DeREA SCHOOL OF DANCING

Ballet - Tap - Acrobatics - Ballroom

Normal Course for Teachers

210 So. Third

Phone 3232

With PETE and JOCKO

the

PARK HOTEL CAFE AND BEER PARLORS

is your "Best Bet" in Missoula. It affords an ideal spot for the student to obtain a tasty sandwich and a glass of beer.

GO GET 'EM, GRIZZLIES!

MAIN STORE

Corner Higgins and Broadway
Phone 2013

SOUTH SIDE PHARMACY

South Third and Higgins
Phone 4466

D. C. Smith Drug Stores

THE BUSY CORNERS

N. B. Matthews '33

TUBBS-CAREY COMPANY, Inc.

Fresh

. . . Vegetables

. . . Fruits

. . . Meats

STAPLE AND FANCY GROCERIES

WATCHES

GLASSES FITTED

DIAMONDS

JEWELRY

EYES TESTED

BORG JEWELRY & OPTICAL COMPANY

227 Higgins

H. O. BELL COMPANY



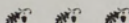
CARS PARTS SERVICE

YOU ARE NEVER DISAPPOINTED

When

You Order Home Grown

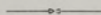
FLOWERS



GARDEN CITY FLORAL
COMPANY

Newest Styles . . .

Greater Values . . .



Foot-Wear for all the family

at

STEELE'S SHOE STORE

220 North Higgins

BARKER BAKERY

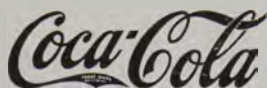
Featuring The BEST in Bakery Products

307 North Higgins

with DELICATESSEN

ALL WE ASK OF YOU IS

Drink



In Bottles

MAJESTIC COCA-COLA
BOTTLING CO.

DINE

DANCE

THE
HAPPY BUNGALOW

Featuring - - -

Fried Spring Chicken

Sizzling Steak Dinners



10 Miles East on No. 10

Typewriters
Supplies



Adding Machines
Repairs

See Our Merchandise Before You Buy

REMINGTON RAND, INC.

118 East Broadway

Norman Lee—representative

Pasteurized
MILK & CREAM

GARDEN CITY DAIRIES

At Your Store
or
Delivered To Your Door

122 W. Front

Phone 4108

MURRAY MOTOR CO.

BUICK

SALES SERVICE

Phone 2007

LaCOMBE FUR SHOP

Furs From Trapper
to Wearer

Buy With
Confidence

2nd Floor Higgins Building

Invites Your Inspection of Furs MADE TO ORDER or READY MADE MODELS

We make a business of REFURING, RELINING, CLEANING,
RESTORING your old fur coats.

MONTANA TEACHERS

FREE Life Membership

Enroll Now . . .
Shortage in All Departments

E. L. HUFF'S TEACHERS'
AGENCY

Now in Our Own Building
"Just off University at Helen"

23 years experienced service

Member N. A. T. A.

1260
Kilocycles



Missoula

K
G
V
O

Your
COLUMBIA
Station

IN THE HEART OF 5 GREAT VALLEYS

GOOD PICTURES MARK...

MEMORY MILESTONES

DOWN "UNIVERSITY AVENUE"

Avoid the tragedy of college days
unmarked by photographs that should
blaze young moderns' trail through
four glorious years.

Ace Wood's
STUDIO

1938 Sentinel Photographers

We SELL, RENT, TRADE, and REPAIR...

All Makes of Office Machines

TYPEWRITER
SUPPLY COMPANY

"Chuck" Gaughan

314 N. Higgins



OFFICIAL AAA SERVICE

Always Open

Storage Our Specialty

Wrecking Car Service Repairs

STAR GARAGE

W. W. Wickes, Prop.

Missoula

Compliments of

JOHN E. HIGHTOWER

General Contractor for

STUDENT UNION BUILDING

JOURNALISM BUILDING

The New . . .

McCracken Stores

A Women's Department Store Exclusively



Higgins Avenue

Missoula, Montana



"Blow" Your Horn For "Live" Music

Musicians Protective Union

Local No. 498



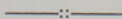
A. F. of M.

There's No Substitute for "LIVING MUSIC"

For INSURANCE . . .

MOON AGENCY INC.

Del. B. Cawley, Mgr.



311 N. Higgins Avenue

Phone 5419

Always insist on . . .

"COMMUNITY"

Pasteurized Milk and Cream

Community Brand Butter

Shefford's Wisconsin Cheese

Community Creamery

420 Nora

Phone 2841

MURPHY MOTORS INC.

DODGE - PLYMOUTH

Sales and Service

USED CARS

208 East Main

Phone 4244

When You Need a . . .
PLUMBER or STEAM FITTER

Call 5390

MISSOULA HARD- WARE & PLUMBING COMPANY

228 N. Higgins



. . . your headquarters for

ELECTRICAL GIFTS

Portable Lamps, Lighting Equipment,
Repair Service, Motor Winding, and
Household Electrical Appliances.

WESTERN MONTANA ELECTRIC COMPANY

118 W. Main St.

Phone 4849

Missoula

MISSOULA LAUNDRY CO.

Phone 3118

Dry Cleaners

Hat Blocking

Rugs

Capps Clothes and Style Mart

JOHN MESSER

325 Higgins Avenue

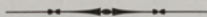
Maker of the
"Scabbard and Blade" Uniforms

Hugenin and DeKay

ARCHITECTS and ENGINEERS

Roscoe C. Hugenin

Norman B. DeKay



BUTTE . . . 1201 West Porphyry Street

MISSOULA 762 Eddy Avenue

HELENA . . . 440 North Benton Avenue



Designers

The Journalism Building

GREETINGS

the

MISSOULA GAS &
COKE COMPANY



Missoula

Montana

IT PAYS TO LOOK WELL

RAINBOW
BARBER SHOP

136 No. Higgins Ave.

the BEAUTIFUL

Montmartre Cafe

Is Always Open For Dinner
And WHAT A DINNER

for Private Parties, Service
Luncheons and Banquets
The BLUE ROOM



Also in Connection
JUNGLE CLUB
COCKTAIL LOUNGE

in the Missoula Hotel

KIRKEMO & VAN TEYLINGEN

Associate Architects
for

The New Women's Residence Hall

H. E. KIRKEMO
Missoula

J. VAN TEYLINGEN
Great Falls

Comliments
of
HENRY HAMILL

Contractor
for
New Dormitory

A. P. BASSETT
PLUMBING - HEATING CO.

Plumbing
Contractor
for
New Dormitory

METALS BANK & TRUST COMPANY

Established 1882

OFFICERS

James T. Finlen
Vice President

James E. Woodard
President

R. W. Place
Cashier

Jno. J. Burke, Assistant Cashier

Guy D. Piatt, Assistant Cashier

Member Federal Deposit Insurance Corporation

BUTTE'S SMARTEST HOTEL...

That is what so many Butte guests say
of the FINLEN because...

Here they find modern comforts, the
conveniences to which they are accus-
tomed.

The light, airy rooms appeal to them,
they appreciate the location... and
they are glad to be in a hotel that pro-
vides the settings for so many of Butte's
leading social gatherings.



FINLEN HOTEL

IN CHOOSING YOUR PIANO...

Choose it as a lifetime investment

... REMEMBER

Regardless of the make you buy it is no
better than the firm you buy it from.

"Serving Montana's Musical Public for 50 Years"

ORTON BROS.

HUNDREDS OF YOUNG PEOPLE FIND OUR BUSINESS TRAINING THE
STARTING POINT TO SUCCESS

A most cordial invitation is extended to all ambitious young men and women to enter at once upon the few months of preparation which will qualify them for the many opportunities offered by the business world. Our school is heartily endorsed by the leading educators of the state of Montana as well as by our 12,000 graduates. All business courses taught including a complete course in Walton Higher Accounting.

BUTTE BUSINESS COLLEGE

Owsley Block, Butte

Write for Catalog

Enroll at Any Time

Compliments

of

SHINER'S

The Big FURNITURE Store

75 E. Park

Phone 3223



COPPER CLUB

Butte's Most Popular
NIGHT CLUB



Compliments

of

THE CLUB

Butte, Montana

GAMERS

17 West Park Street

Serve Delicious . . .

Breakfasts

Lunches

Dinners

Also . . .

Pure Ice Cream - Fine Candies

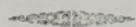


CHEQUAMEGON
CAFE

Al Hultman

27 No. Main

Butte



Compliments
of
M. & M.
Butte



DANCING

THE *American* **CANDY SHOP.**
27. W. PARK 3 FLOORS
DAINTY LUNCHES AN IDEAL SPOT FOR A SNACK BUTTE

The Best Place To Eat
in Butte

MOXOM CAFE

Booths

Fountain - Lunch Counter

Butte's . . .
Finest Clothing Store

— ♦ —
**SHIRLEY
CLOTHING CO.**

Butte

Montana

BUTTE BOOSTERS

Al's Photo

Walter Shay

Al Wilkinson

GREAT FALLS

THE ELECTRIC CITY

GREAT FALLS

MONTANA

JOHNSON HOTEL

FIVE STORIES

of

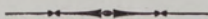
SOLID COMFORT

Club Cafeteria Next Door

Extends

Its

COMPLIMENTS



CLUB CAFETERIA

Great Falls

THE MINT

Extends

It's Compliments

Great Falls

NEW

MODERN

FIREPROOF

FALLS HOTEL

G. E. McKay, Manager



Worthy of Recommendation to Your Friends



When in Great Falls
Stop at ...
the Beautiful
PARK HOTEL

Homelike Hospitality

friendly . . .

efficient . . .

SERVICE

**HODGES TWIN SERVICE
STATION**

Dealers of CALSO Products

Great Falls

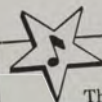
Willem Mengelberg

famous conductor

salutes

the

**HAMMOND
ORGAN**



This great maestro, a former conductor of the New York Philharmonic Symphony, has long been a Hammond enthusiast. "The Hammond Organ has been perfected to an exceptionally high degree," he says. "It is a miracle of tonal colours. For church or concert hall, as well as for private dwellings, this Hammond Organ is the 'ideal.' As a musician and organ-player I express my heartfelt admiration."

★ Drop in today or tomorrow and hear this concert organ—which is as inexpensive, as practical for your home as a piano. We promise you one of the most interesting half-hours you ever spent.

\$1295.00 and up—liberal terms arranged.



The
GREAT FALLS RECORDING STUDIOS

P. O. Box 492

Great Falls, Montana

Phone 3303

A HAMMOND BELONGS IN EVERY MUSICAL HOME



is the Spirit
that moves
Montana Motors

It responds instantly in any
motor to give smooth, economical
motoring. SILVER GAS is Montana crude
oil made into the world's finest gas in an
all-Montana plant.

Home Oil and Refining Company

HOTEL RAINBOW

Strictly FIREPROOF

Reasonable RATES

Great Falls

For Insurance...

See A Man In The MOON

Moon Agency, Inc.

Great Falls

Best Wishes

From
Two Great New Cars

and

BELL & REINBOLD

Hamilton, Montana

—and—

BELL & HOLT

Stevensville, Montana

Genuine FORD Parts

—••—
Excellent Service

—••—
In The Valley For 20 Years

FIRST STATE BANK
OF STEVENSVILLE

Officers and Directors

Ralph B. Robinson, Pres.
D. C. Lockridge, Vice Pres.
George L. Baggs
E. L. Reed

Member of Federal Deposit
Insurance Corporation

... COMPLIMENTS

DR. RENNICK

HAMILTON

HAMILTON HOTEL and BAR

Mrs. Bethel Acuff, Prop.

—••—
MODERN BUS DEPOT

RUCK COMMERCIAL COMPANY

KALISPELL . . .

HOME OF THE FLATHEAD



NOFFSINGER

Northwestern

Montana's

Finest

COCKTAIL
LOUNGE



JACK'S
TAPROOM

MONTANA HOTEL BLDG.

Kalispell

THE PALM



SOFT DRINKS
BEER
LUNCHES

— ♦ —
Candies
Cigarettes
Tobaccos
Fire Arms
Fishing Tackle
— ♦ —

120 Main Street



LISTLE'S
CAFE

Glenn Hanson, Prop.

●
FAMED FOR . . .
Quality Food
Good Cooking

●
. . . A Pleasant
Atmosphere

Compliments of

THE FLATHEAD COMMERCIAL
COMPANY

THE COFFEE SHOP

149 Main Street

- ... Fountain Service
- ... Fountain Lunch
- ... News Stand

SERVICE TO TOURISTS



GREETINGS
1938 SENTINEL

HARDWARE



GROCERIES

CROCKERY

IMPLEMENTS

Auto Supplies

Sporting Goods

Camping Supplies

KALISPELL MERCANTILE
COMPANY

Wholesale

Retail



Kalispell

Kalispell's Prescription Druggists . . . Compliments
Elizabeth Arden TOILETRIES . . CANDY . . MAGAZINES . . CIGARETTES
Lucien Lelong PERFUMES

MacMILLAN DRUG

Noffsinger Block

Phone 86

[illegible]

— 248 —



Silhouette in the Moonlight . . .

SAFEWAY STORES . . .

SAFEWAY STORE No. 169 Anaconda, Montana	SAFEWAY STORE No. 389 Hamilton, Montana
SAFEWAY STORE No. 195 Bozeman, Montana	SAFEWAY STORE No. 649 Helena, Montana
SAFEWAY STORE No. 175 Butte, Montana	SAFEWAY STORE No. 1188 Kalispell, Montana
SAFEWAY STORE No. 193 Butte, Montana	SAFEWAY STORE No. 267 Livingston, Montana
SAFEWAY STORE No. 279 Butte, Montana	SAFEWAY STORE No. 167 Missoula, Montana
SAFEWAY STORE No. 1835 Butte, Montana	SAFEWAY STORE No. 361 Missoula, Montana
SAFEWAY STORE No. 1838 Butte, Montana	SAFEWAY STORE No. 1849 Polson, Montana
SAFEWAY STORE No. 1839 Butte, Montana	SAFEWAY STORE No. 1834 Stevensville, Montana
SAFEWAY STORE No. 1841 Butte, Montana	SAFEWAY STORE No. 1848 Whitefish, Montana
SAFEWAY STORE No. 1842 Butte, Montana	PAY'N TAKIT No. 4 Bozeman, Montana
SAFEWAY STORE No. 1843 Butte, Montana	PAY'N TAKIT No. 6 Livingston, Montana
SAFEWAY STORE No. 171 Deer Lodge, Montana	PAY'N TAKIT No. 5 Helena, Montana
SAFEWAY STORE No. 173 Dillon, Montana	PAY'N TAKIT No. 2 Missoula, Montana
	PAY'N TAKIT No. 3 Anaconda, Montana

GRIZZLY

GASOLINE

*is a winner
in its own
field*

DUBBS-CRACKED
From Montana Crude by
**NORTHWEST REFINING
COMPANY**
CUTBANK, MONTANA



This Book Is Bound
in a
KINGSKRAFT COVER

Manufactured By
THE KINGSPORT PRESS, INC.



Kingsport

Tennessee

RAWLINGS
ATHLETIC
EQUIPMENT



A. M. Holter Hardware Co.

State Distributors



Helena

Montana

Keep Your Crowd Together and Travel By
MOTOR COACH

On Your
Picnic and other Outings
Pullman Car Equipment
Radio Equipped Coaches

Daily
Convenient
Frequent
Service

Special Party Rates

INTERMOUNTAIN TRANSPORTATION CO.

UNITED TRANSIT COMPANY
In Missoula and Suburbs

Phone 3484

Phone 3484

WHITING
Letterman Sweaters
are the best money
can buy.

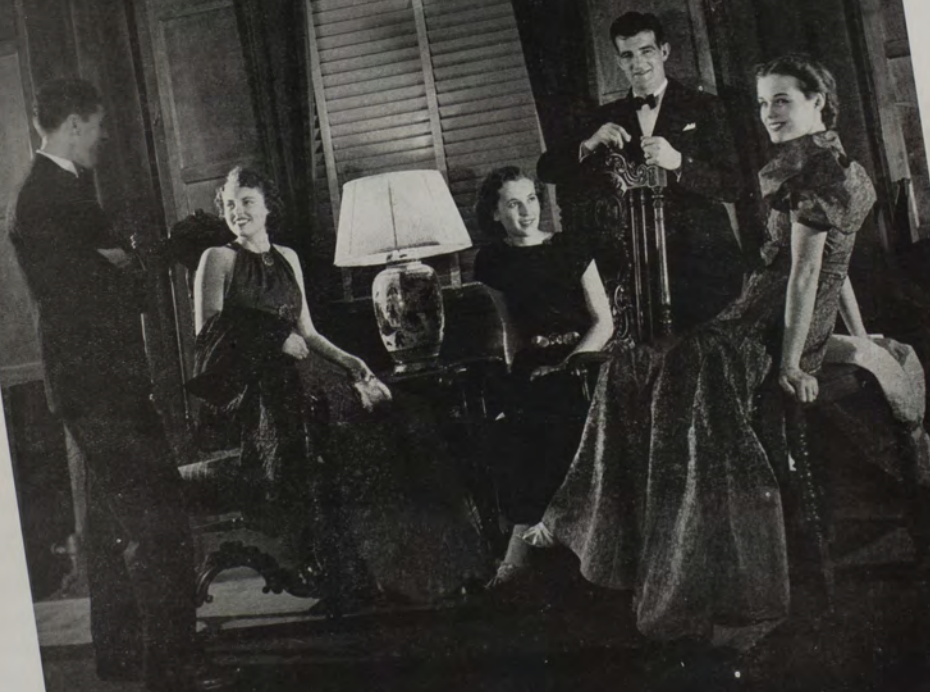


H. L. WHITING
COMPANY
Seattle, Washington

Compliments
of
CLUTE POLLEYS
LUMBER COMPANY

Wall Boards
Paints
Lumber
Celotex

HIGHLIGHTS & SHADOWS



THE ENGRAVING FOR THE 1938 SENTINEL WAS PRODUCED BY THE
COMMERCIAL ART & ENGRAVING COMPANY ☆ LOS ANGELES

PRINTING

Printing should be bought as an investment designed to accomplish some definite purpose, whether it be to stimulate sales, or enhance prestige. Its value to you lies not in what it costs, but what it accomplishes.



Bessette Printing Company
PRINTERS AND BLANK BOOK MANUFACTURERS

Phone 4531

21 E. Quartz St.
Butte, Montana

The 1938 Sentinel was printed
and bound by the Bessette Printing Co.



We will prepare sketches and dummies which will make it possible for you to determine your needs, and will follow your instructions in such a way that your highest expectations will be achieved. Ask us to help you.



Montana State University Football Team 1937

DOWNTOWN
COACHES
HELP
BUILD A BETTER ATHLETIC PROGRAM
AT
M. S. U.

Join Now

Anaconda
Butte
Corvallis
Darby

Great Falls
Florence
Hamilton
Helena
Kalispell

Polson
Stevensville
Victor
Whitefish



To the End of Another Day



NOPFINGER

